

Data Path : Z:\pestpcbsrv\HPCHEM1\ECD_D\Data\PD012924\
 Data File : PD080953.D
 Signal(s) : Signal #1: ECD1A.ch Signal #2: ECD2B.ch
 Acq On : 29 Jan 2024 15:34
 Operator : AR\AJ
 Sample : PB158678BS
 Misc :
 ALS Vial : 10 Sample Multiplier: 1

Instrument :
 ECD_D
ClientSampleId :
 PLCS678

Manual Integrations
APPROVED

Reviewed By :Abdul Mirza 01/30/2024
 Supervised By :Ankita Jodhani 01/30/2024

Integration File signal 1: autoint1.e
 Integration File signal 2: autoint2.e
 Quant Time: Jan 30 09:42:31 2024
 Quant Method : Z:\pestpcbsrv\HPCHEM1\ECD_D\Method\PD011024CLP.M
 Quant Title : GC Extractables
 QLast Update : Wed Jan 10 14:12:04 2024
 Response via : Initial Calibration
 Integrator: ChemStation

Volume Inj. : 1 µl
 Signal #1 Phase : ZB-MR1 Signal #2 Phase: ZB-MR2
 Signal #1 Info : 30M x 0.32mm x0.5 Signal #2 Info : 30M x 0.32mm x 0.25µm

Compound	RT#1	RT#2	Resp#1	Resp#2	ng/ml	ng/ml

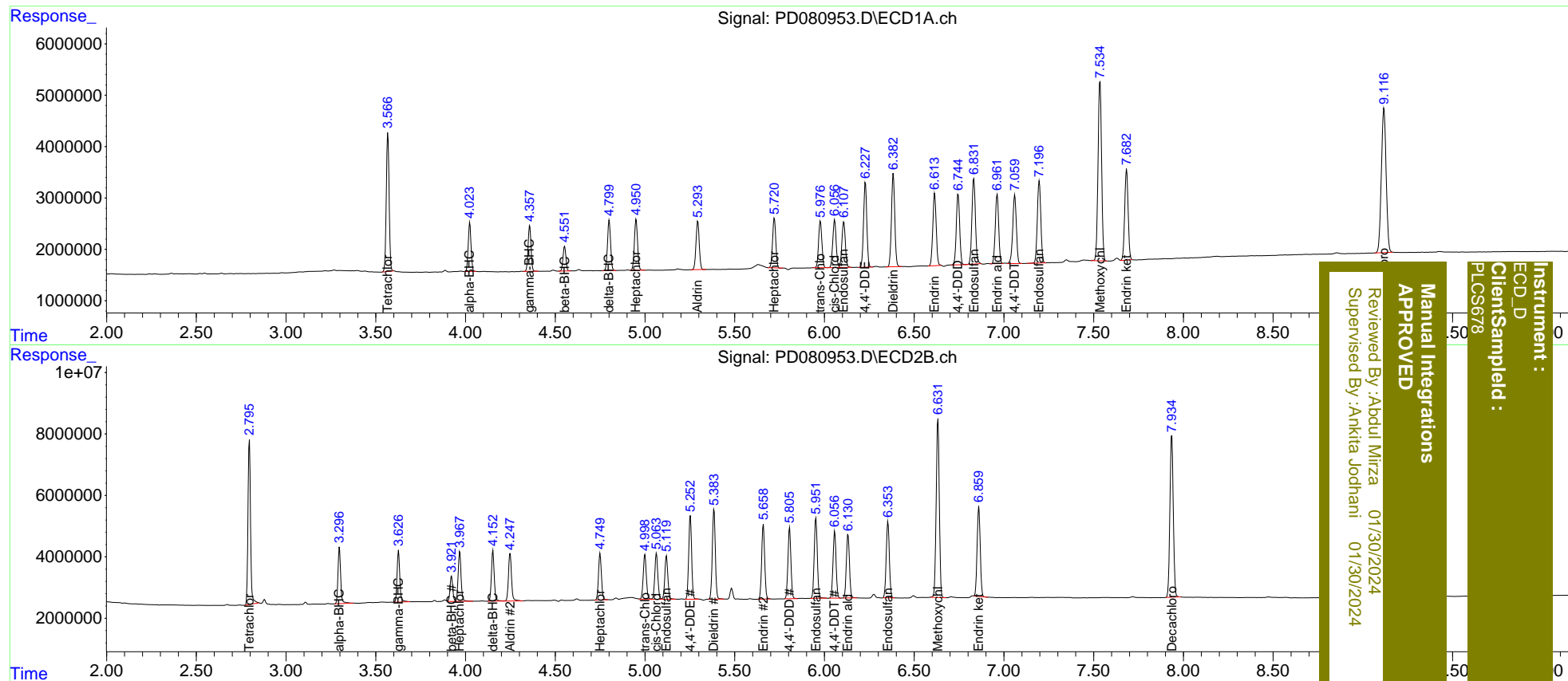
System Monitoring Compounds						
1) SA Tetrachlo...	3.568	2.796	29624479	53032893	20.818	20.769
27) SA Decachlor...	9.118	7.935	52077118	68847301	26.515	25.747
Target Compounds						
2) A alpha-BHC	4.024	3.298	10479111	19102275	4.450	4.669
3) MA gamma-BHC...	4.358	3.627	10137384	17789151	4.428	4.662
4) MA Heptachlor	4.951	3.968	12226434	18175244	5.057	4.921
5) MB Aldrin	5.295	4.249	11873023	18451098	5.245	5.044
6) B beta-BHC	4.553	3.922	5362268	8606442	5.200	4.878
7) B delta-BHC	4.801	4.153	11778098	17878369	4.938	4.543
8) B Heptachlo...	5.721	4.750	11955285	17204739	5.489	5.010
9) A Endosulfan I	6.108	5.120	11714531	16399923	5.519	5.098
10) B trans-Chl...	5.977	5.000	11598474	17392323	5.623	5.222
11) B cis-Chlor...	6.057	5.064	12022829	17496043	5.665	5.094
12) B 4,4'-DDE	6.228	5.253	20854055	30648395	10.608	9.730
13) MA Dieldrin	6.384	5.385	23260598	34207396	10.421	9.666
14) MA Endrin	6.614	5.660	18513473	28206130	10.167	9.503
15) B Endosulfa...	6.832	5.953	22587541	31546616	11.543	10.628
16) A 4,4'-DDD	6.745	5.806	17954104	26726996	10.753	9.867
17) MA 4,4'-DDT	7.061	6.057	18623503	25576513	10.981	9.501
18) B Endrin al...	6.963	6.132	17628923	24885093	12.241	11.112
19) B Endosulfa...	7.197	6.354	21574200	30020635	12.046	10.728
20) A Methoxychlor	7.535	6.633	48234928	70128348	52.224	49.539
21) B Endrin ke...	7.682	6.861	23399175	35146705	11.911m	11.171

(f)=RT Delta > 1/2 Window (#)=Amounts differ by > 25% (m)=manual int.

Data Path : Z:\pestpcbsrv\HPCHEM1\ECD_D\Data\PD012924\
 Data File : PD080953.D
 Signal(s) : Signal #1: ECD1A.ch Signal #2: ECD2B.ch
 Acq On : 29 Jan 2024 15:34
 Operator : AR\AJ
 Sample : PB158678BS
 Misc :
 ALS Vial : 10 Sample Multiplier: 1

Integration File signal 1: autoint1.e
 Integration File signal 2: autoint2.e
 Quant Time: Jan 30 09:42:31 2024
 Quant Method : Z:\pestpcbsrv\HPCHEM1\ECD_D\Method\PD011024CLP.M
 Quant Title : GC Extractables
 QLast Update : Wed Jan 10 14:12:04 2024
 Response via : Initial Calibration
 Integrator: ChemStation

Volume Inj. : 1 µl
 Signal #1 Phase : ZB-MR1 Signal #2 Phase: ZB-MR2
 Signal #1 Info : 30M x 0.32mm x0.5 Signal #2 Info : 30M x 0.32mm x 0.25µm



Instrument : ECD_D
 Client/Sample : PLCS678
 Manual Integrations APPROVED
 Reviewed By : Abdul Mirza 01/30/2024
 Supervised By : Ankita Jodhani 01/30/2024