

Data Path : Z:\pestpcbsrv\HPCHEM1\ECD_D\Data\PD013120\
 Data File : PD057099.D
 Signal(s) : Signal #1: ECD1A.ch Signal #2: ECD2B.ch
 Acq On : 31 Jan 2020 13:11
 Operator : AJ\MA
 Sample : HEXANE
 Misc :
 ALS Vial : 1 Sample Multiplier: 1

Instrument :
 ECD_D
 ClientSampleId :
 HEXANE

Integration File signal 1: autoint1.e
 Integration File signal 2: autoint2.e
 Quant Time: Jan 31 21:52:28 2020
 Quant Method : Z:\pestpcbsrv\HPCHEM1\ECD_D\Method\PD012320CLP.M
 Quant Title : GC Extractables
 QLast Update : Fri Jan 24 08:33:42 2020
 Response via : Initial Calibration
 Integrator: ChemStation

Volume Inj. : 1 µl
 Signal #1 Phase : ZB-MR2 Signal #2 Phase: ZB-MR1
 Signal #1 Info : 30M x 0.32mm x0.2 Signal #2 Info : 30M x 0.32mm x 0.50µm

Compound	RT#1	RT#2	Resp#1	Resp#2	ng/ml	ng/ml
----------	------	------	--------	--------	-------	-------

System Monitoring Compounds

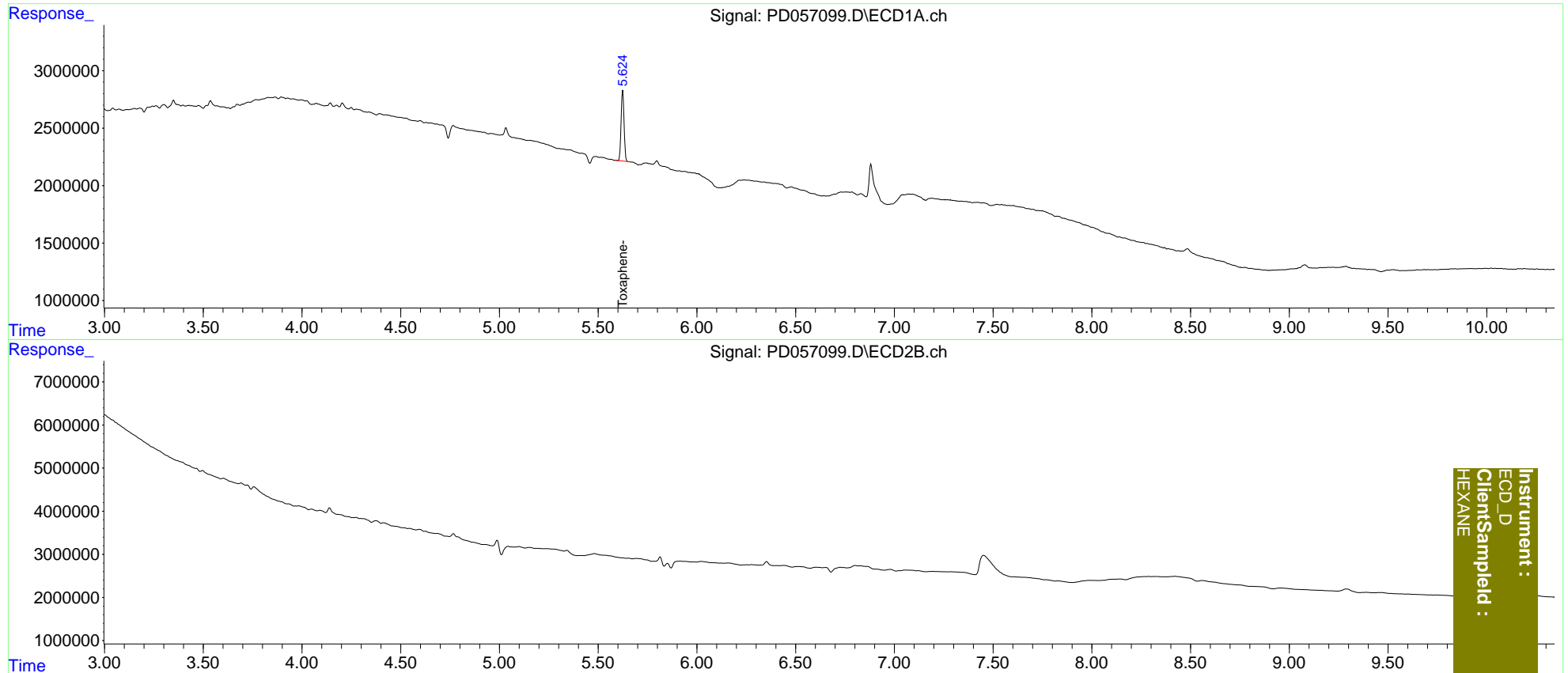
Target Compounds	RT#1	RT#2	Resp#1	Resp#2	ng/ml	ng/ml	
23) Toxaphene-2	5.625	0.000	6361041	0	903.164	N.D.	#

(f)=RT Delta > 1/2 Window (#)=Amounts differ by > 25% (m)=manual int.

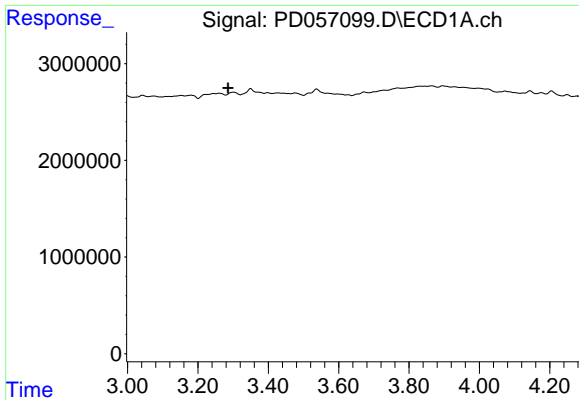
Data Path : Z:\pestpcbsrv\HPCHEM1\ECD_D\Data\PD013120\
 Data File : PD057099.D
 Signal(s) : Signal #1: ECD1A.ch Signal #2: ECD2B.ch
 Acq On : 31 Jan 2020 13:11
 Operator : AJ\MA
 Sample : HEXANE
 Misc :
 ALS Vial : 1 Sample Multiplier: 1

Integration File signal 1: autoint1.e
 Integration File signal 2: autoint2.e
 Quant Time: Jan 31 21:52:28 2020
 Quant Method : Z:\pestpcbsrv\HPCHEM1\ECD_D\Method\PD012320CLP.M
 Quant Title : GC Extractables
 QLast Update : Fri Jan 24 08:33:42 2020
 Response via : Initial Calibration
 Integrator: ChemStation

Volume Inj. : 1 µl
 Signal #1 Phase : ZB-MR2 Signal #2 Phase: ZB-MR1
 Signal #1 Info : 30M x 0.32mm x 0.2 Signal #2 Info : 30M x 0.32mm x 0.50µm

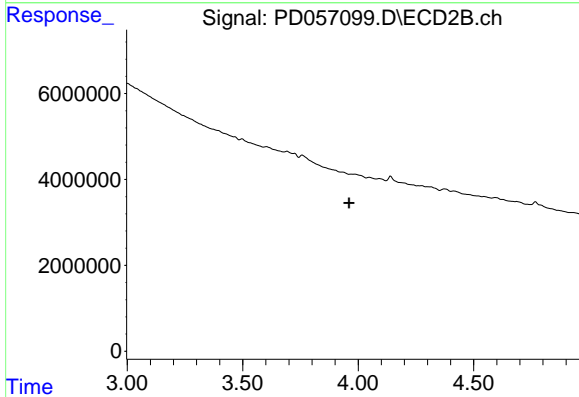


Instrument :
 ECD_D
 ClientSampleId :
 HEXANE

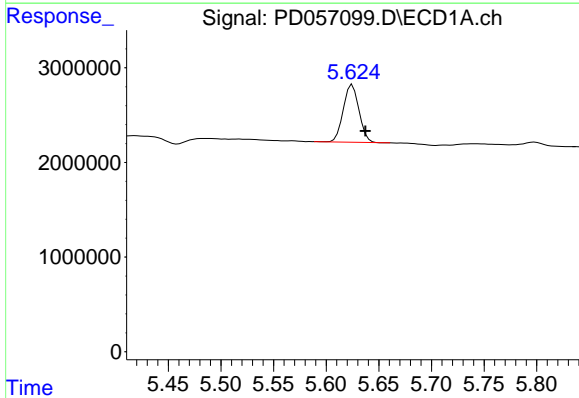


#1 Tetrachloro-m-xylene
 R.T.: 0.000 min
 Exp R.T. : 3.285 min
 Response: 0
 Conc: N.D.

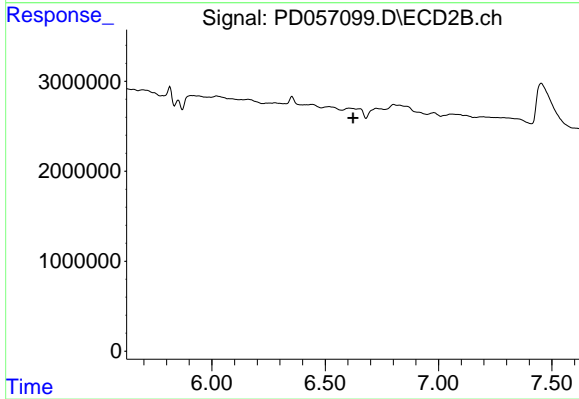
Instrument :
 ECD_D
 ClientSampleId :
 HEXANE



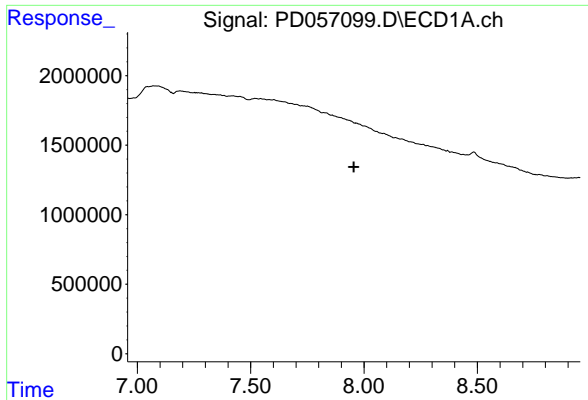
#1 Tetrachloro-m-xylene
 R.T.: 0.000 min
 Exp R.T. : 3.960 min
 Response: 0
 Conc: N.D.



#23 Toxaphene-2
 R.T.: 5.625 min
 Delta R.T.: -0.012 min
 Response: 6361041
 Conc: 903.16 ng/ml



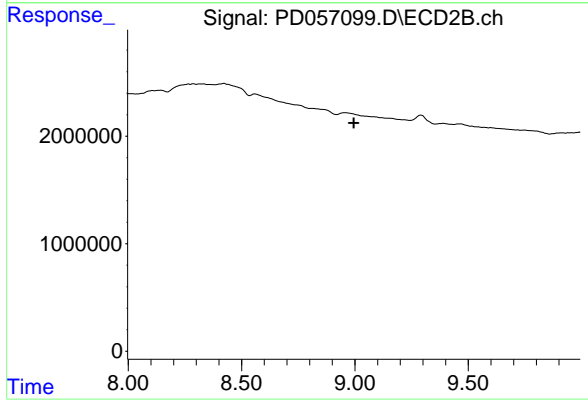
#23 Toxaphene-2
 R.T.: 0.000 min
 Exp R.T. : 6.624 min
 Response: 0
 Conc: N.D.



#27 Decachlorobiphenyl

R.T.: 0.000 min
Exp R.T. : 7.955 min
Response: 0
Conc: N.D.

Instrument :
ECD_D
ClientSampleId :
HEXANE



#27 Decachlorobiphenyl

R.T.: 0.000 min
Exp R.T. : 8.995 min
Response: 0
Conc: N.D.