

Data Path : Z:\pestpcbsrv\HPCHEM1\ECD_D\Data\PD013120\
 Data File : PD057110.D
 Signal(s) : Signal #1: ECD1A.ch Signal #2: ECD2B.ch
 Acq On : 31 Jan 2020 16:04
 Operator : AJ\MA
 Sample : L1300-03
 Misc :
 ALS Vial : 12 Sample Multiplier: 1

Instrument :
 ECD_D
 ClientSampled :

Integration File signal 1: autoint1.e
 Integration File signal 2: autoint2.e
 Quant Time: Jan 31 21:55:23 2020
 Quant Method : Z:\pestpcbsrv\HPCHEM1\ECD_D\Method\PD012320CLP.M
 Quant Title : GC Extractables
 QLast Update : Fri Jan 24 08:33:42 2020
 Response via : Initial Calibration
 Integrator: ChemStation

Volume Inj. : 1 µl
 Signal #1 Phase : ZB-MR2 Signal #2 Phase: ZB-MR1
 Signal #1 Info : 30M x 0.32mm x0.2 Signal #2 Info : 30M x 0.32mm x 0.50µm

Compound	RT#1	RT#2	Resp#1	Resp#2	ng/ml	ng/ml

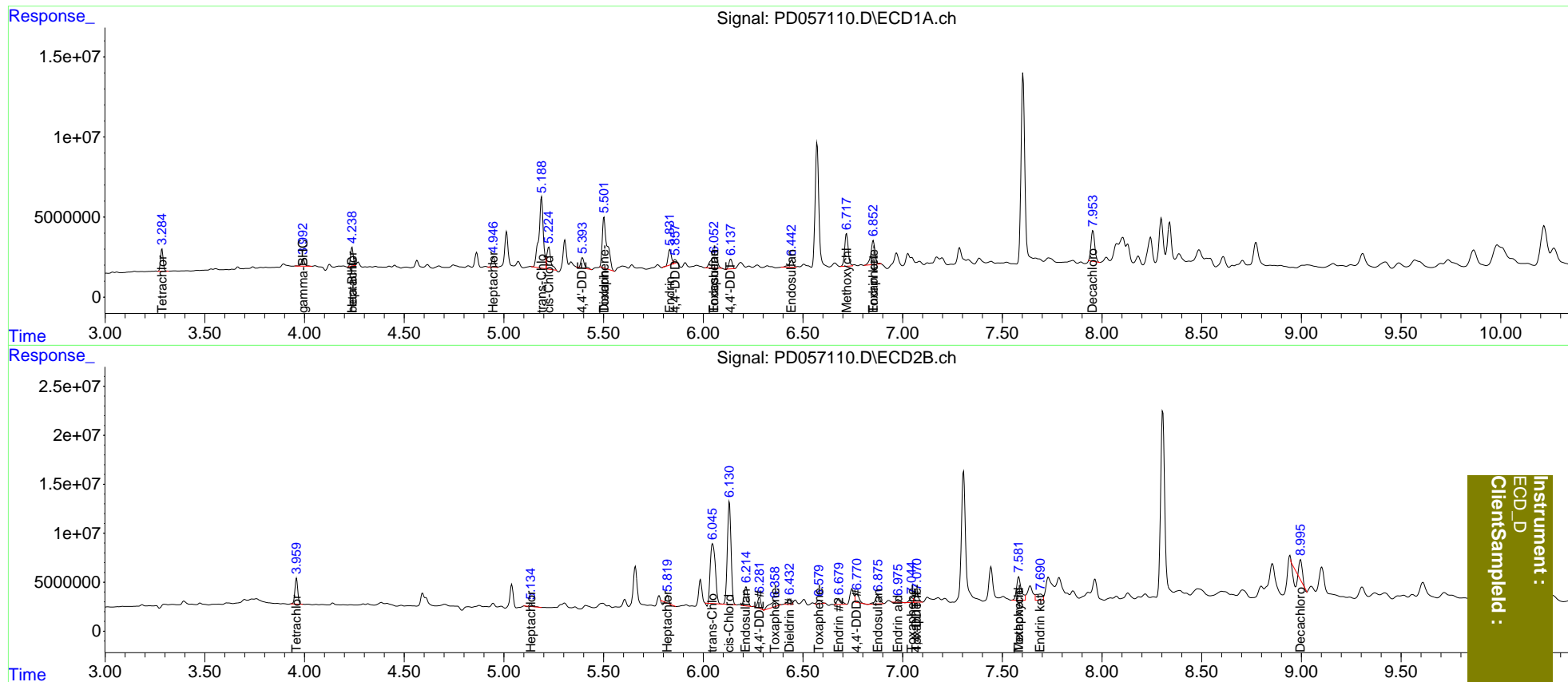
System Monitoring Compounds						
1) SA Tetrachlo...	3.285	3.960	12387841	25956435	13.701	14.026
2) SA Decachlor...	7.955	8.996	25068840	7907968	23.027	4.232 #
Target Compounds						
3) MA gamma-BHC...	3.993	4.592f	5303339	-6183843	3.994	N.D. #
4) MA Heptachlor	4.239f	5.135	10646111	3229643	8.660	1.229 #
6) B beta-BHC	4.239	4.822	10646111	-3690730	18.797	N.D. #
8) B Heptachlo...	4.947	5.820	6381787	4118844	5.753	1.910 #
9) A Endosulfan I	5.306	6.215f	-2518211	24740140	N.D.	11.364
10) B trans-Chl...	5.189	6.047	69441525	106.1E6	61.587	45.177 #
11) B cis-Chlor...	5.225	6.131	18818835	134.3E6	16.566	56.996 #
12) B 4,4'-DDE	5.394	6.282	7921385	12770709	7.027	5.780
13) MA Dieldrin	5.502	6.433	53942371	7458804	45.536	3.128 #
14) MA Endrin	5.832f	6.680	10704594	9875162	10.683	5.081 #
15) B Endosulfa...	6.053	6.876	16979985	14721498	16.273	6.955 #
16) A 4,4'-DDD	5.859f	6.771	2500662	11739232	2.821	6.356 #
17) MA 4,4'-DDT	6.138	7.071	6726520	12135492	7.832	6.243
18) B Endrin al...	0.000	6.977	0	3415230	N.D.	2.000
19) B Endosulfa...	6.443	0.000	6294762	0	6.294	N.D. #
20) A Methoxychlor	6.719	7.582f	25278678	39043891	54.115	38.686 #
21) B Endrin ke...	6.853f	7.691	21442061	14528745	19.773	6.859 #
22) Toxaphene-1	5.502	6.360	53942371	15085623	8328.305	1388.879 #
23) Toxaphene-2	0.000	6.581	0	5872981	N.D.	423.680
24) Toxaphene-3	0.000	7.046	0	5988009	N.D.	277.488
25) Toxaphene-4	6.053	7.071	16979985	12135492	958.880	232.807 #
26) Toxaphene-5	6.853	7.582	21442061	39043891	941.697	1512.199 #

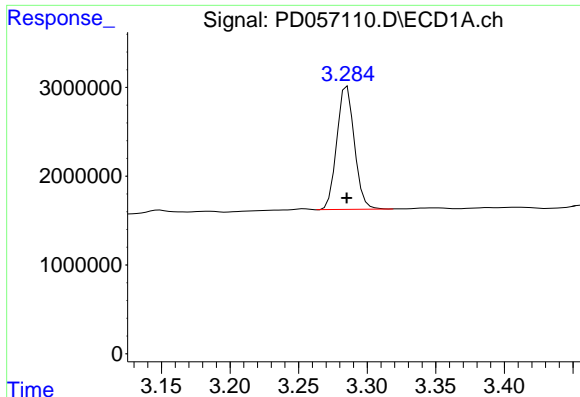
(f)=RT Delta > 1/2 Window (#)=Amounts differ by > 25% (m)=manual int.

Data Path : Z:\pestpcbsrv\HPCHEM1\ECD_D\Data\PD013120\
 Data File : PD057110.D
 Signal(s) : Signal #1: ECD1A.ch Signal #2: ECD2B.ch
 Acq On : 31 Jan 2020 16:04
 Operator : AJ\MA
 Sample : L1300-03
 Misc :
 ALS Vial : 12 Sample Multiplier: 1

Integration File signal 1: autoint1.e
 Integration File signal 2: autoint2.e
 Quant Time: Jan 31 21:55:23 2020
 Quant Method : Z:\pestpcbsrv\HPCHEM1\ECD_D\Method\PD012320CLP.M
 Quant Title : GC Extractables
 QLast Update : Fri Jan 24 08:33:42 2020
 Response via : Initial Calibration
 Integrator: ChemStation

Volume Inj. : 1 µl
 Signal #1 Phase : ZB-MR2 Signal #2 Phase: ZB-MR1
 Signal #1 Info : 30M x 0.32mm x0.2 Signal #2 Info : 30M x 0.32mm x 0.50µm

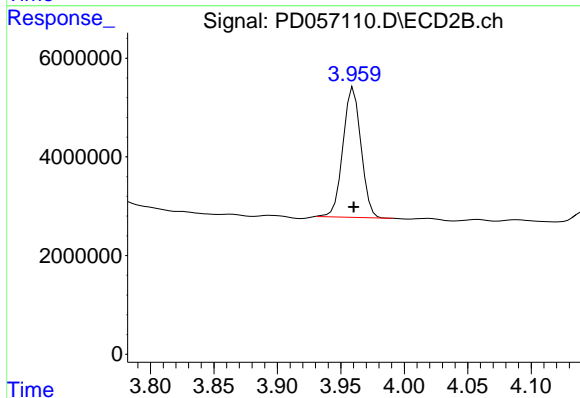




#1 Tetrachloro-m-xylene

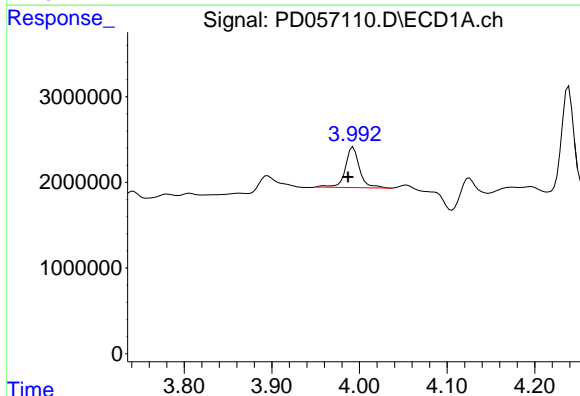
R.T.: 3.285 min
 Delta R.T.: 0.000 min
 Response: 12387841
 Conc: 13.70 ng/ml

Instrument :
 ECD_D
 ClientSampleId :



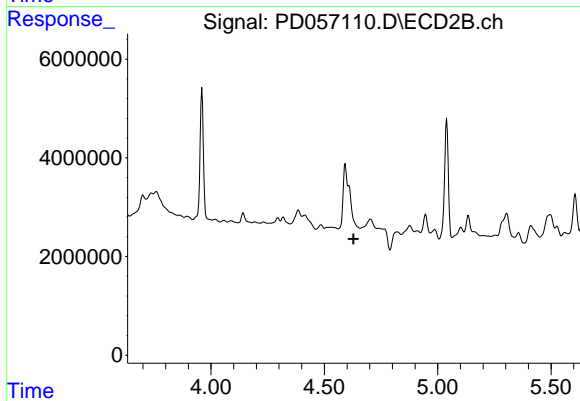
#1 Tetrachloro-m-xylene

R.T.: 3.960 min
 Delta R.T.: 0.000 min
 Response: 25956435
 Conc: 14.03 ng/ml



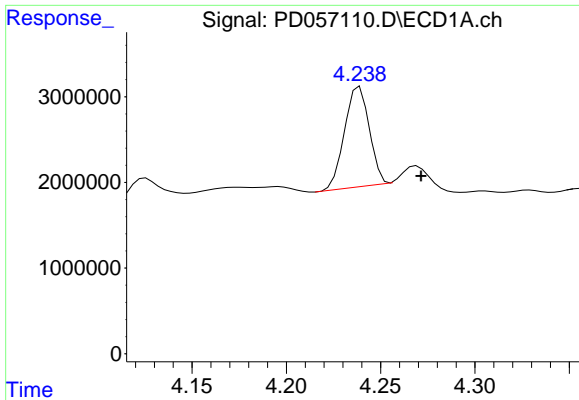
#3 gamma-BHC (Lindane)

R.T.: 3.993 min
 Delta R.T.: 0.006 min
 Response: 5303339
 Conc: 3.99 ng/ml



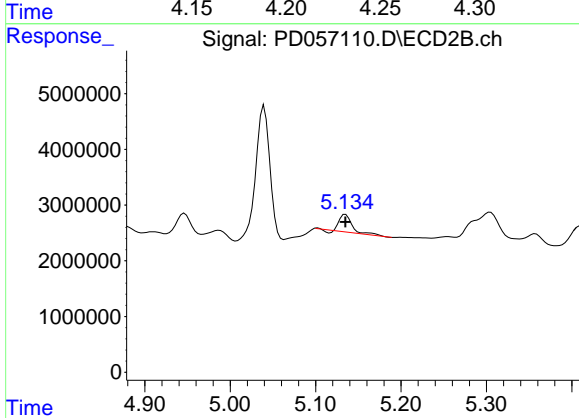
#3 gamma-BHC (Lindane)

R.T.: 4.592 min
 Delta R.T.: -0.037 min
 Response: -6183843
 Conc: N.D.

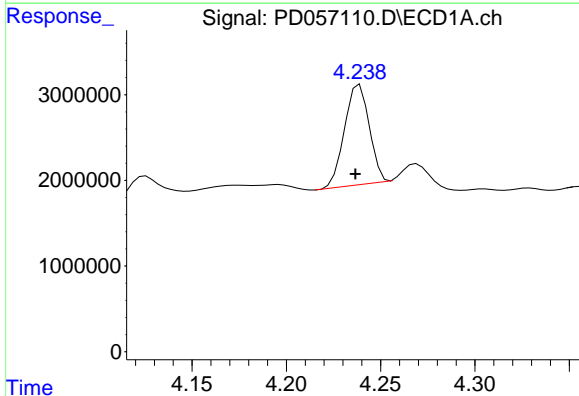


#4 Heptachlor
 R.T.: 4.239 min
 Delta R.T.: -0.033 min
 Response: 10646111
 Conc: 8.66 ng/ml

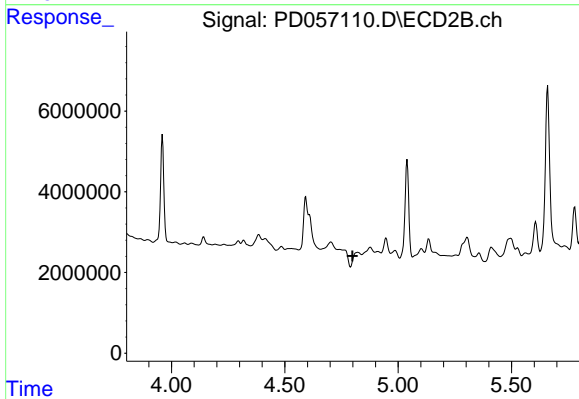
Instrument :
 ECD_D
 ClientSampled :



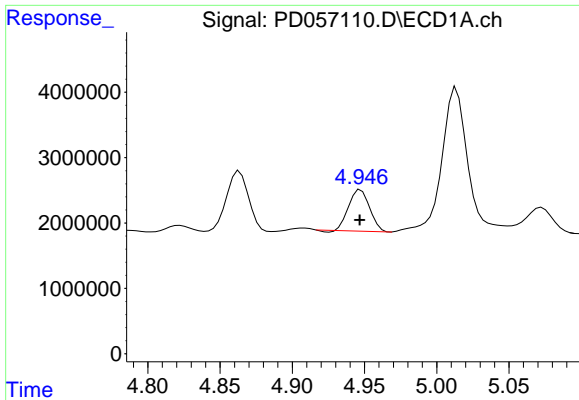
#4 Heptachlor
 R.T.: 5.135 min
 Delta R.T.: 0.000 min
 Response: 3229643
 Conc: 1.23 ng/ml



#6 beta-BHC
 R.T.: 4.239 min
 Delta R.T.: 0.002 min
 Response: 10646111
 Conc: 18.80 ng/ml

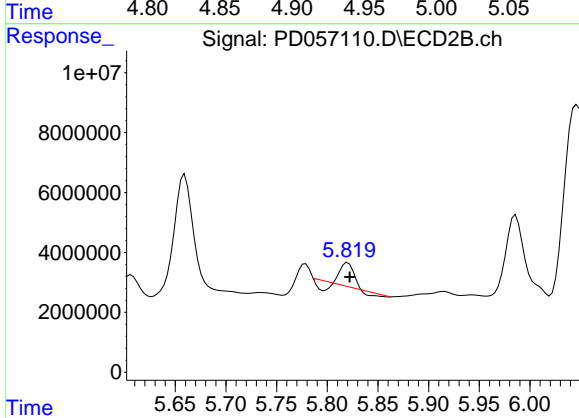


#6 beta-BHC
 R.T.: 4.822 min
 Delta R.T.: 0.023 min
 Response: -3690730
 Conc: N.D.

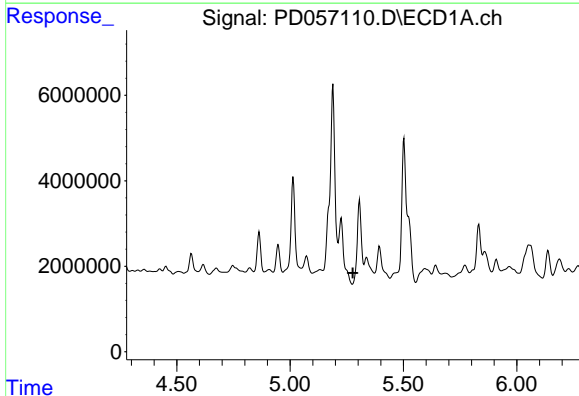


#8 Heptachlor epoxide
 R.T.: 4.947 min
 Delta R.T.: 0.000 min
 Response: 6381787
 Conc: 5.75 ng/ml

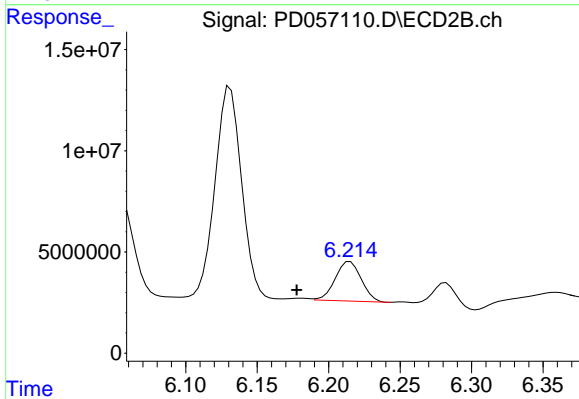
Instrument :
 ECD_D
 ClientSampled :



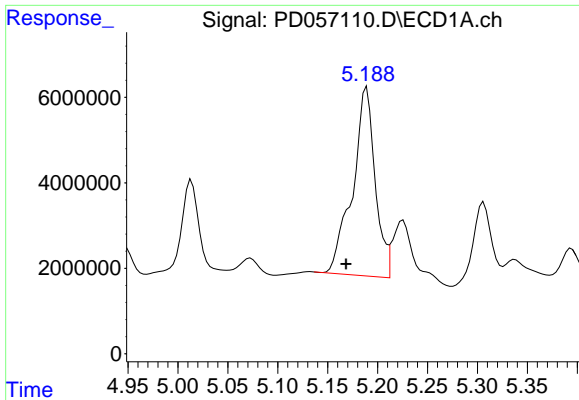
#8 Heptachlor epoxide
 R.T.: 5.820 min
 Delta R.T.: -0.002 min
 Response: 4118844
 Conc: 1.91 ng/ml



#9 Endosulfan I
 R.T.: 5.306 min
 Delta R.T.: 0.029 min
 Response: -2518211
 Conc: N.D.



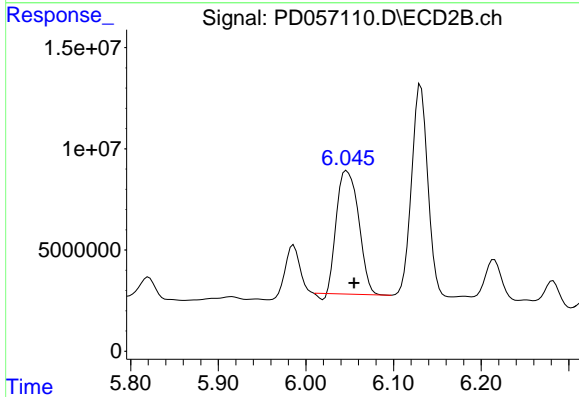
#9 Endosulfan I
 R.T.: 6.215 min
 Delta R.T.: 0.037 min
 Response: 24740140
 Conc: 11.36 ng/ml



#10 trans-Chlordane

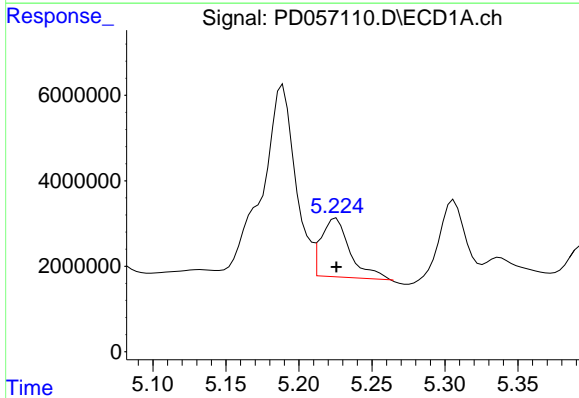
R.T.: 5.189 min
 Delta R.T.: 0.021 min
 Response: 69441525
 Conc: 61.59 ng/ml

Instrument :
 ECD_D
 ClientSampled :



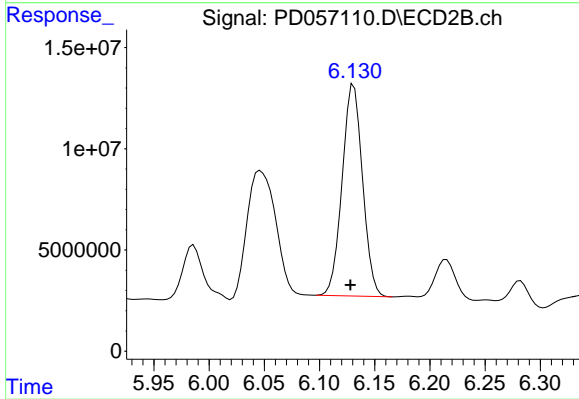
#10 trans-Chlordane

R.T.: 6.047 min
 Delta R.T.: -0.008 min
 Response: 106145395
 Conc: 45.18 ng/ml



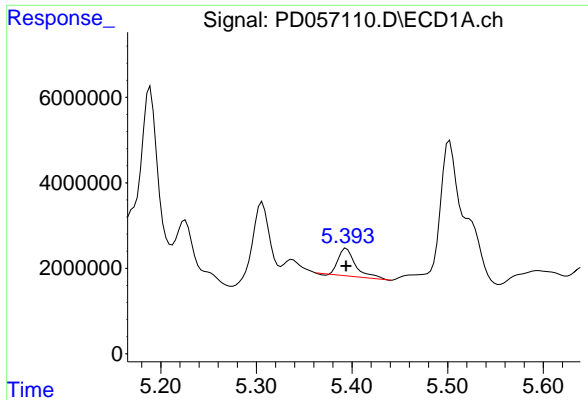
#11 cis-Chlordane

R.T.: 5.225 min
 Delta R.T.: 0.000 min
 Response: 18818835
 Conc: 16.57 ng/ml



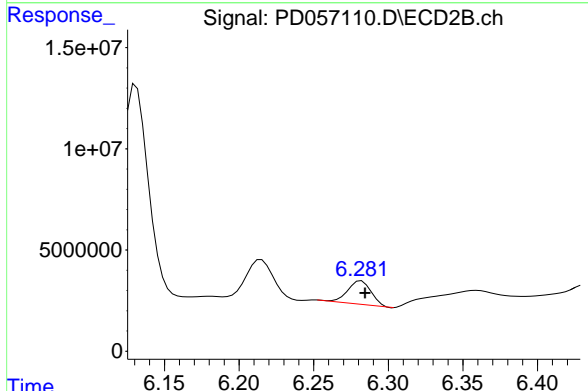
#11 cis-Chlordane

R.T.: 6.131 min
 Delta R.T.: 0.003 min
 Response: 134327529
 Conc: 57.00 ng/ml

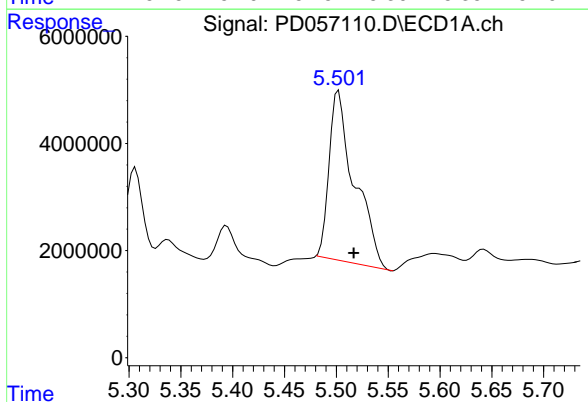


#12 4,4'-DDE
 R.T.: 5.394 min
 Delta R.T.: 0.000 min
 Response: 7921385
 Conc: 7.03 ng/ml

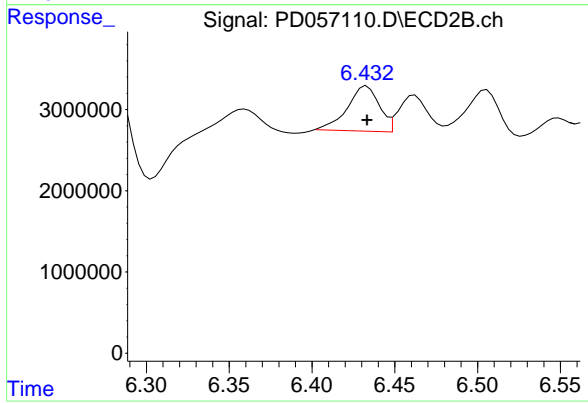
Instrument :
 ECD_D
 ClientSampled :



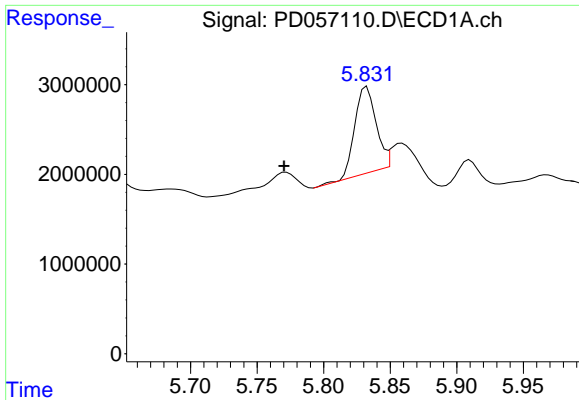
#12 4,4'-DDE
 R.T.: 6.282 min
 Delta R.T.: -0.002 min
 Response: 12770709
 Conc: 5.78 ng/ml



#13 Dieldrin
 R.T.: 5.502 min
 Delta R.T.: -0.015 min
 Response: 53942371
 Conc: 45.54 ng/ml

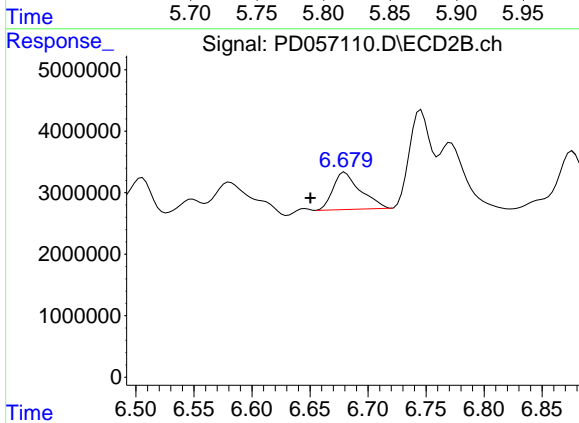


#13 Dieldrin
 R.T.: 6.433 min
 Delta R.T.: 0.000 min
 Response: 7458804
 Conc: 3.13 ng/ml

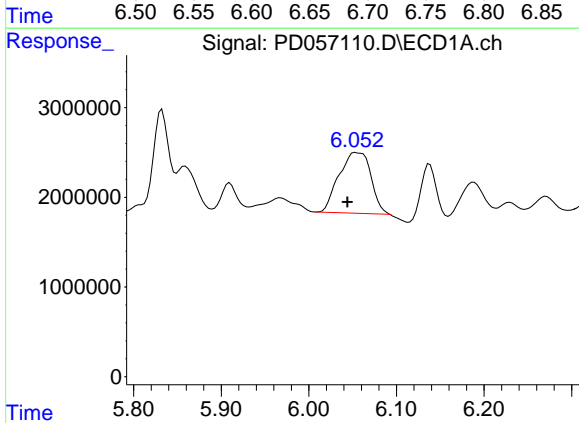


#14 Endrin
 R.T.: 5.832 min
 Delta R.T.: 0.062 min
 Response: 10704594
 Conc: 10.68 ng/ml

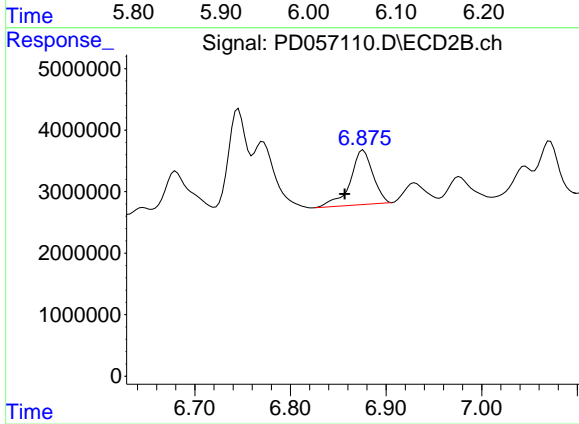
Instrument :
 ECD_D
 ClientSampleId :



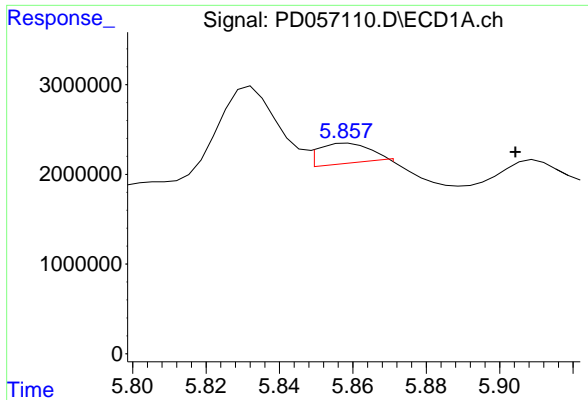
#14 Endrin
 R.T.: 6.680 min
 Delta R.T.: 0.030 min
 Response: 9875162
 Conc: 5.08 ng/ml



#15 Endosulfan II
 R.T.: 6.053 min
 Delta R.T.: 0.009 min
 Response: 16979985
 Conc: 16.27 ng/ml

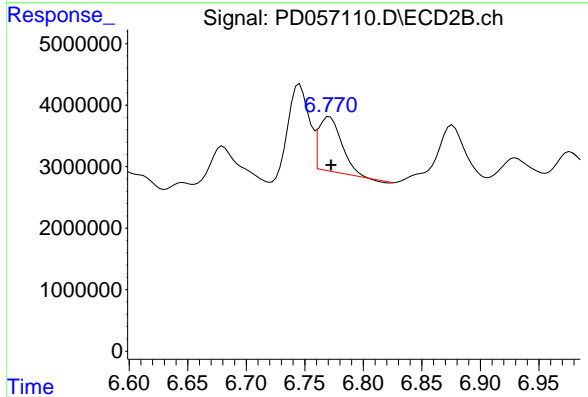


#15 Endosulfan II
 R.T.: 6.876 min
 Delta R.T.: 0.019 min
 Response: 14721498
 Conc: 6.95 ng/ml

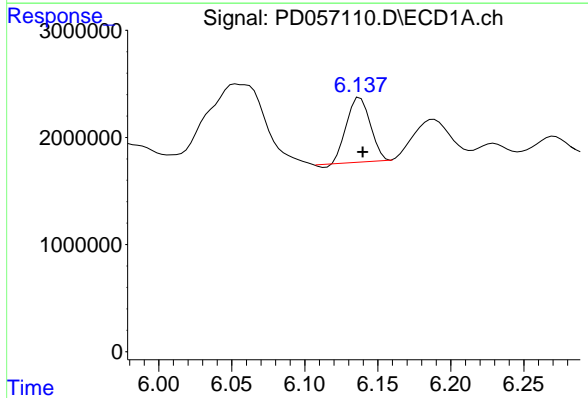


#16 4,4'-DDD
 R.T.: 5.859 min
 Delta R.T.: -0.045 min
 Response: 2500662
 Conc: 2.82 ng/ml

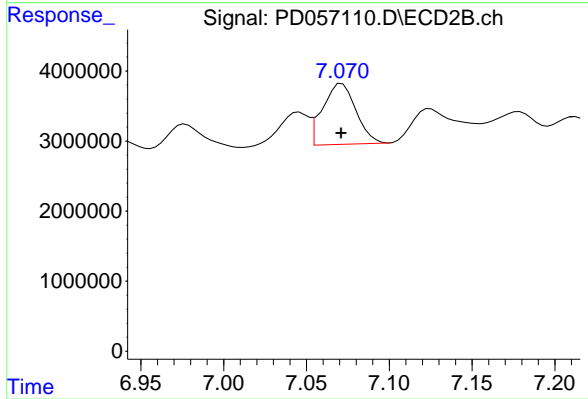
Instrument :
 ECD_D
 ClientSampled :



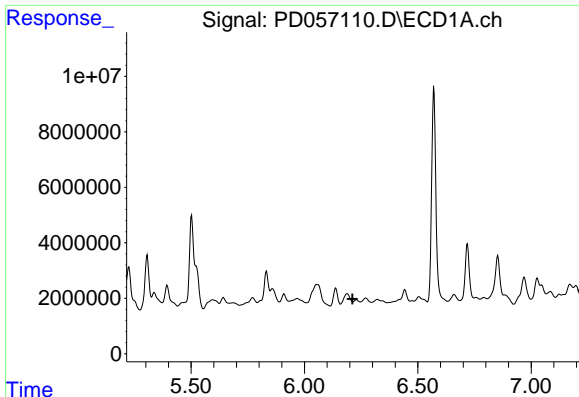
#16 4,4'-DDD
 R.T.: 6.771 min
 Delta R.T.: -0.001 min
 Response: 11739232
 Conc: 6.36 ng/ml



#17 4,4'-DDT
 R.T.: 6.138 min
 Delta R.T.: -0.002 min
 Response: 6726520
 Conc: 7.83 ng/ml



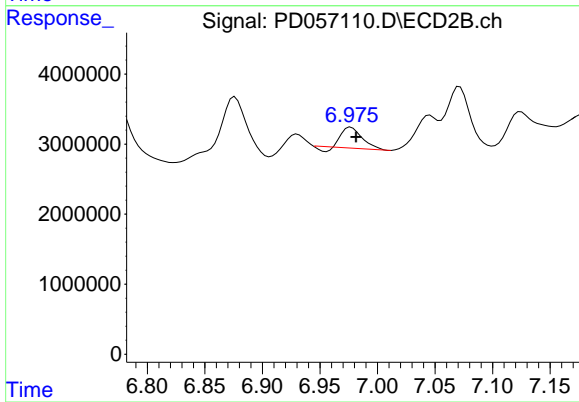
#17 4,4'-DDT
 R.T.: 7.071 min
 Delta R.T.: 0.000 min
 Response: 12135492
 Conc: 6.24 ng/ml



#18 Endrin aldehyde

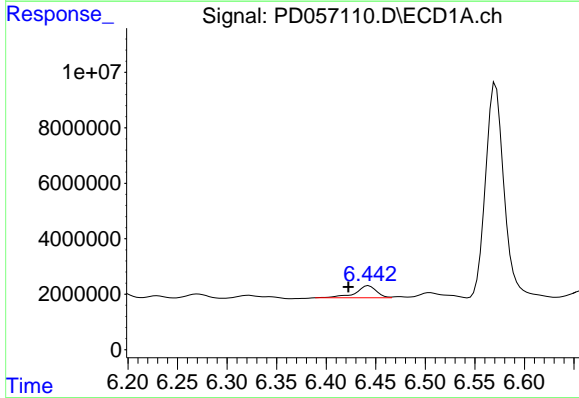
R.T.: 0.000 min
 Exp R.T.: 6.212 min
 Response: 0
 Conc: N.D.

Instrument :
 ECD_D
 ClientSampleId :



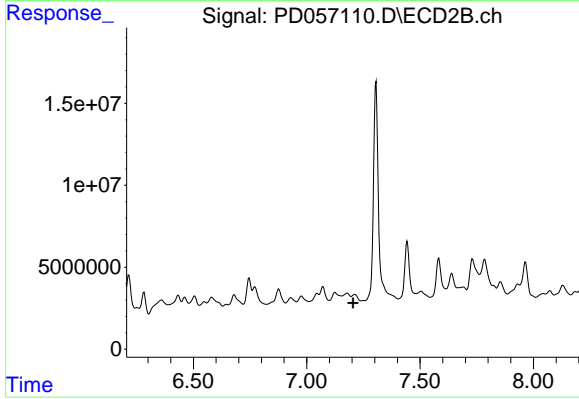
#18 Endrin aldehyde

R.T.: 6.977 min
 Delta R.T.: -0.005 min
 Response: 3415230
 Conc: 2.00 ng/ml



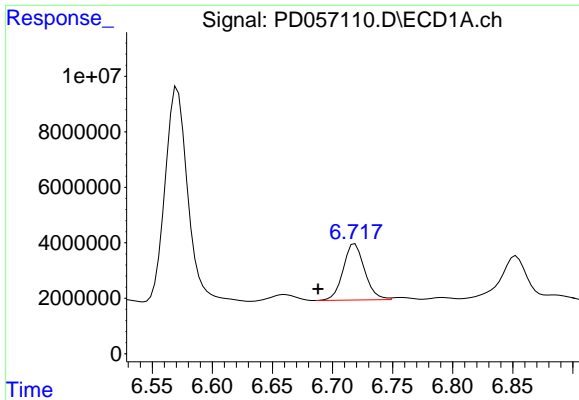
#19 Endosulfan Sulfate

R.T.: 6.443 min
 Delta R.T.: 0.020 min
 Response: 6294762
 Conc: 6.29 ng/ml



#19 Endosulfan Sulfate

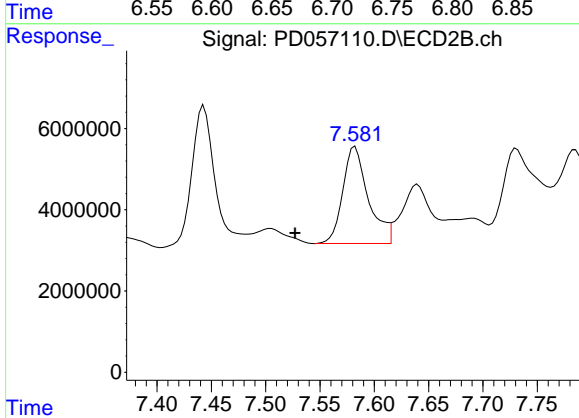
R.T.: 0.000 min
 Exp R.T.: 7.204 min
 Response: 0
 Conc: N.D.



#20 Methoxychlor

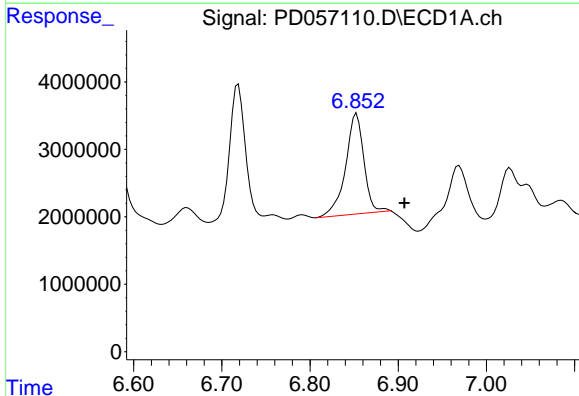
R.T.: 6.719 min
 Delta R.T.: 0.031 min
 Response: 25278678
 Conc: 54.12 ng/ml

Instrument :
 ECD_D
 ClientSampleId :



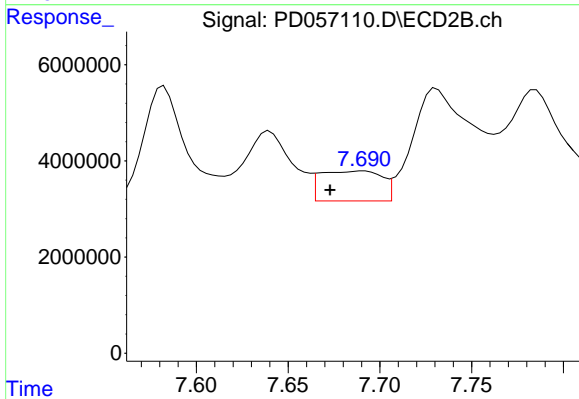
#20 Methoxychlor

R.T.: 7.582 min
 Delta R.T.: 0.055 min
 Response: 39043891
 Conc: 38.69 ng/ml



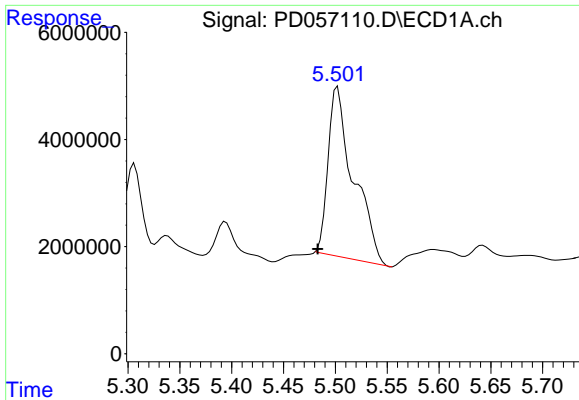
#21 Endrin ketone

R.T.: 6.853 min
 Delta R.T.: -0.054 min
 Response: 21442061
 Conc: 19.77 ng/ml



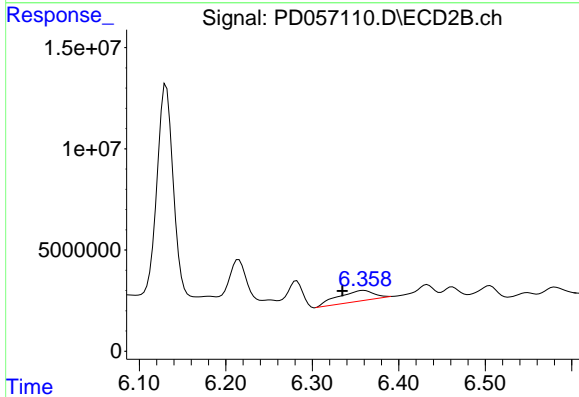
#21 Endrin ketone

R.T.: 7.691 min
 Delta R.T.: 0.018 min
 Response: 14528745
 Conc: 6.86 ng/ml

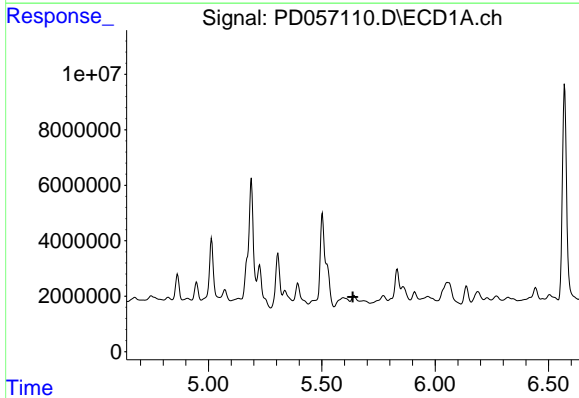


#22 Toxaphene-1
 R.T.: 5.502 min
 Delta R.T.: 0.019 min
 Response: 53942371
 Conc: 8328.30 ng/ml

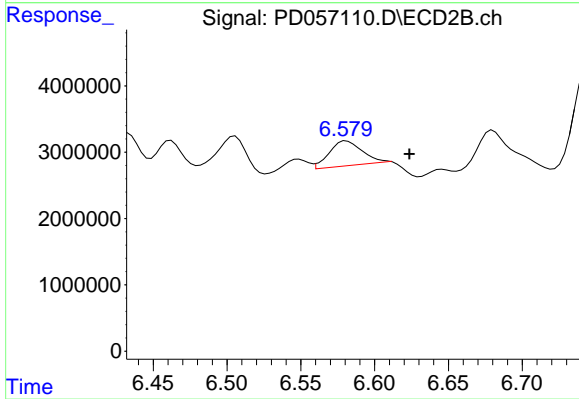
Instrument :
 ECD_D
 ClientSampled :



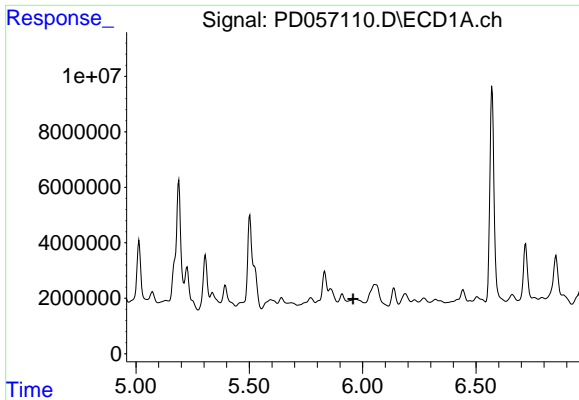
#22 Toxaphene-1
 R.T.: 6.360 min
 Delta R.T.: 0.025 min
 Response: 15085623
 Conc: 1388.88 ng/ml



#23 Toxaphene-2
 R.T.: 0.000 min
 Exp R.T. : 5.637 min
 Response: 0
 Conc: N.D.



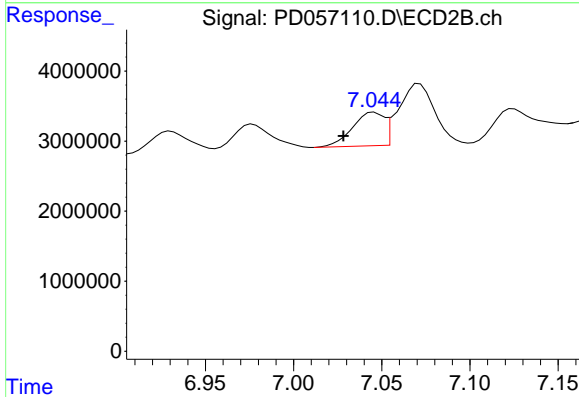
#23 Toxaphene-2
 R.T.: 6.581 min
 Delta R.T.: -0.043 min
 Response: 5872981
 Conc: 423.68 ng/ml



#24 Toxaphene-3

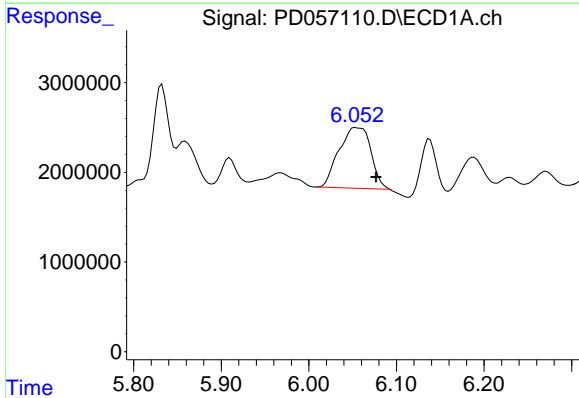
R.T.: 0.000 min
 Exp R.T.: 5.958 min
 Response: 0
 Conc: N.D.

Instrument :
 ECD_D
 ClientSampled :



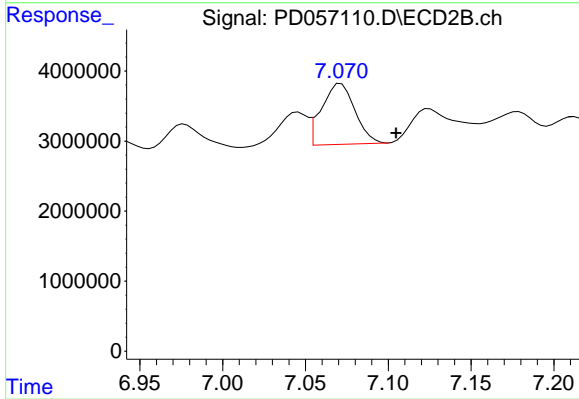
#24 Toxaphene-3

R.T.: 7.046 min
 Delta R.T.: 0.017 min
 Response: 5988009
 Conc: 277.49 ng/ml



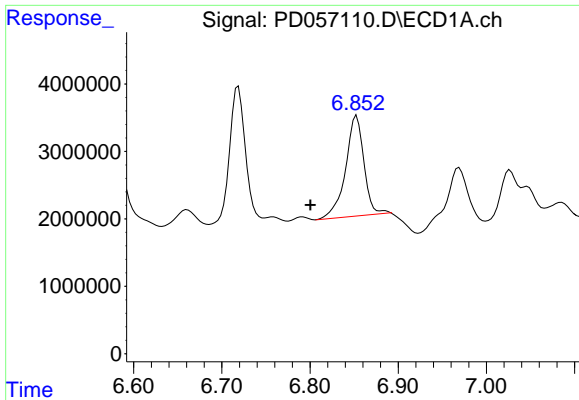
#25 Toxaphene-4

R.T.: 6.053 min
 Delta R.T.: -0.023 min
 Response: 16979985
 Conc: 958.88 ng/ml



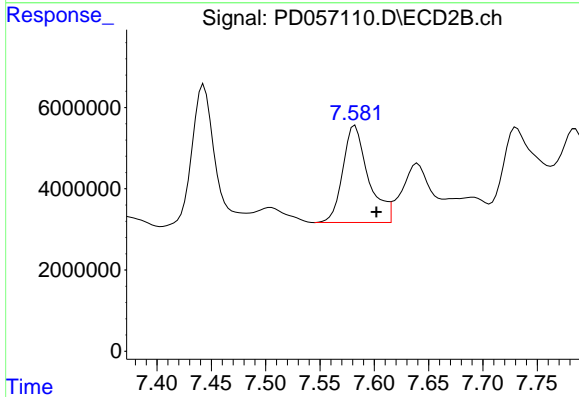
#25 Toxaphene-4

R.T.: 7.071 min
 Delta R.T.: -0.033 min
 Response: 12135492
 Conc: 232.81 ng/ml

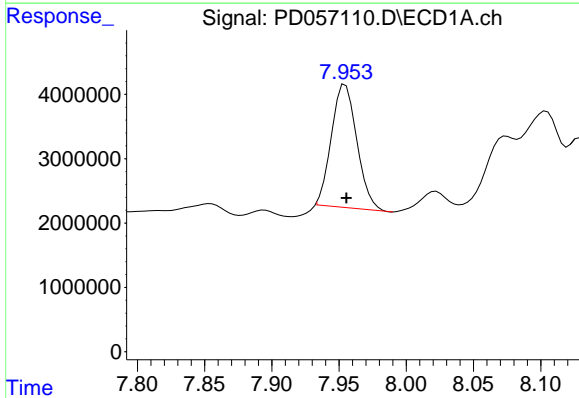


#26 Toxaphene-5
 R.T.: 6.853 min
 Delta R.T.: 0.052 min
 Response: 21442061
 Conc: 941.70 ng/ml

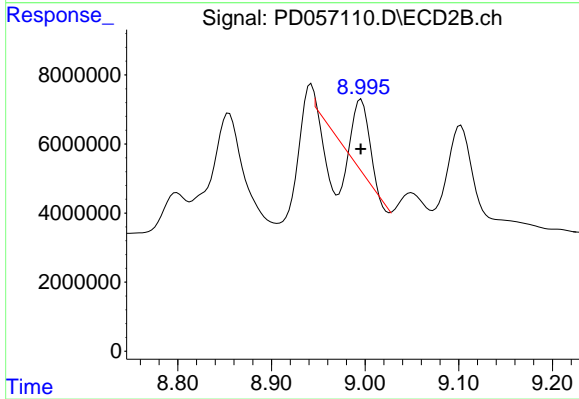
Instrument :
 ECD_D
 ClientSampled :



#26 Toxaphene-5
 R.T.: 7.582 min
 Delta R.T.: -0.020 min
 Response: 39043891
 Conc: 1512.20 ng/ml



#27 Decachlorobiphenyl
 R.T.: 7.955 min
 Delta R.T.: 0.000 min
 Response: 25068840
 Conc: 23.03 ng/ml



#27 Decachlorobiphenyl
 R.T.: 8.996 min
 Delta R.T.: 0.000 min
 Response: 7907968
 Conc: 4.23 ng/ml