

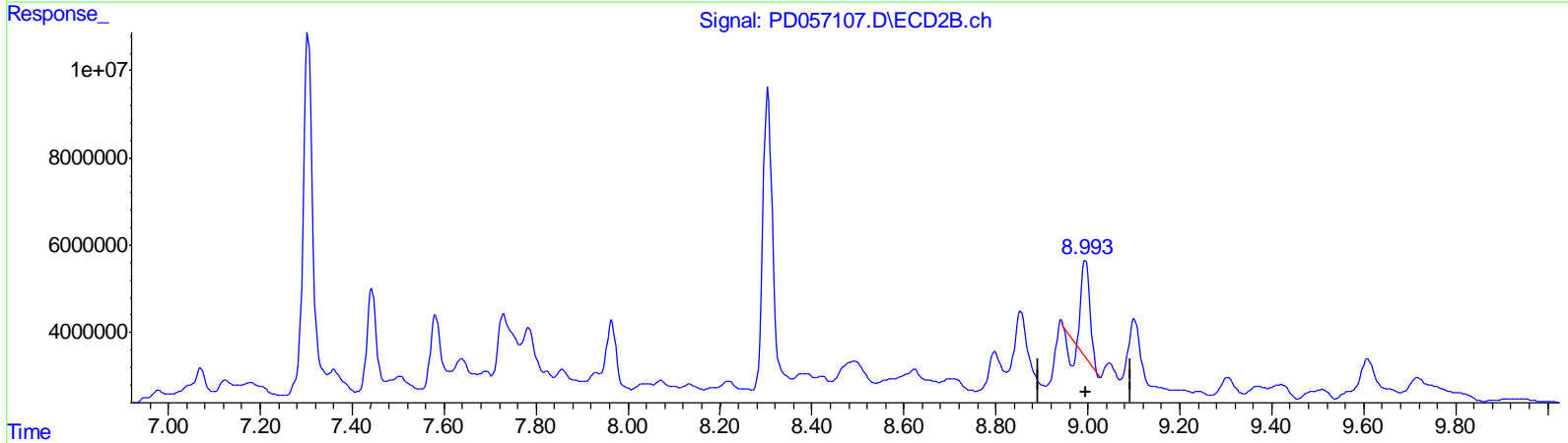
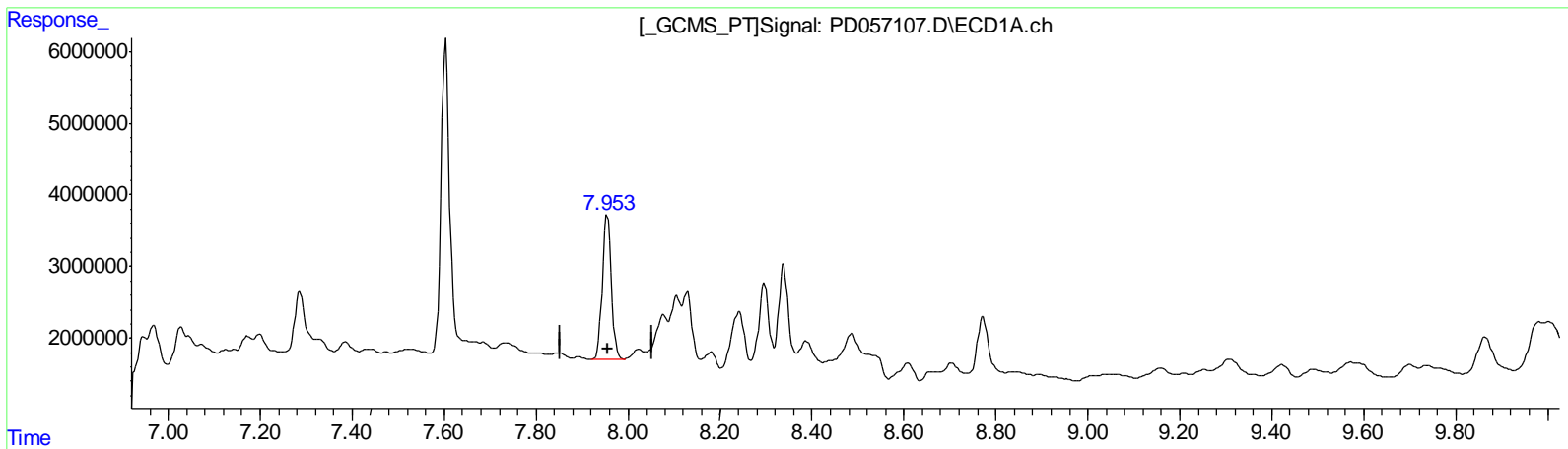
Data Path : Z:\pestpcbsrv\HPCHEM1\ECD\_D\Data\PD013120\  
 Data File : PD057107.D  
 Signal(s) : Signal #1: ECD1A.ch Signal #2: ECD2B.ch  
 Acq On : 31 Jan 2020 15:22  
 Operator : AJ\MA  
 Sample : L1300-19  
 Misc :  
 ALS Vial : 9 Sample Multiplier: 1

**Instrument :**  
 ECD\_D  
**ClientSampled :**  
 C5AS8

**Manual Integrations**  
**APPROVED**  
 mohammad  
 2/3/2020 2:23:17 PM

Integration File signal 1: autoint1.e  
 Integration File signal 2: autoint2.e  
 Quant Time: Feb 01 00:38:56 2020  
 Quant Method : Z:\pestpcbsrv\HPCHEM1\ECD\_D\Method\PD012320CLP.M  
 Quant Title : GC Extractables  
 QLast Update : Fri Jan 24 08:33:42 2020  
 Response via : Initial Calibration  
 Integrator: ChemStation

Volume Inj. : 1 µl  
 Signal #1 Phase : ZB-MR2 Signal #2 Phase: ZB-MR1  
 Signal #1 Info : 30M x 0.32mm x0.2 Signal #2 Info : 30M x 0.32mm x 0.50µm



QEdit

(27) Decachlorobiphenyl (SA)  
 7.955min 24.984 ng/ml  
 response 27199049

(27) Decachlorobiphenyl #2 (SA)  
 8.995min 13.886 ng/ml  
 response 25949433

(+) = Expected Retention Time

Data Path : Z:\pestpcbsrv\HPCHEM1\ECD\_D\Data\PD013120\  
 Data File : PD057107.D  
 Signal(s) : Signal #1: ECD1A.ch Signal #2: ECD2B.ch  
 Acq On : 31 Jan 2020 15:22  
 Operator : AJ\MA  
 Sample : L1300-19  
 Misc :  
 ALS Vial : 9 Sample Multiplier: 1

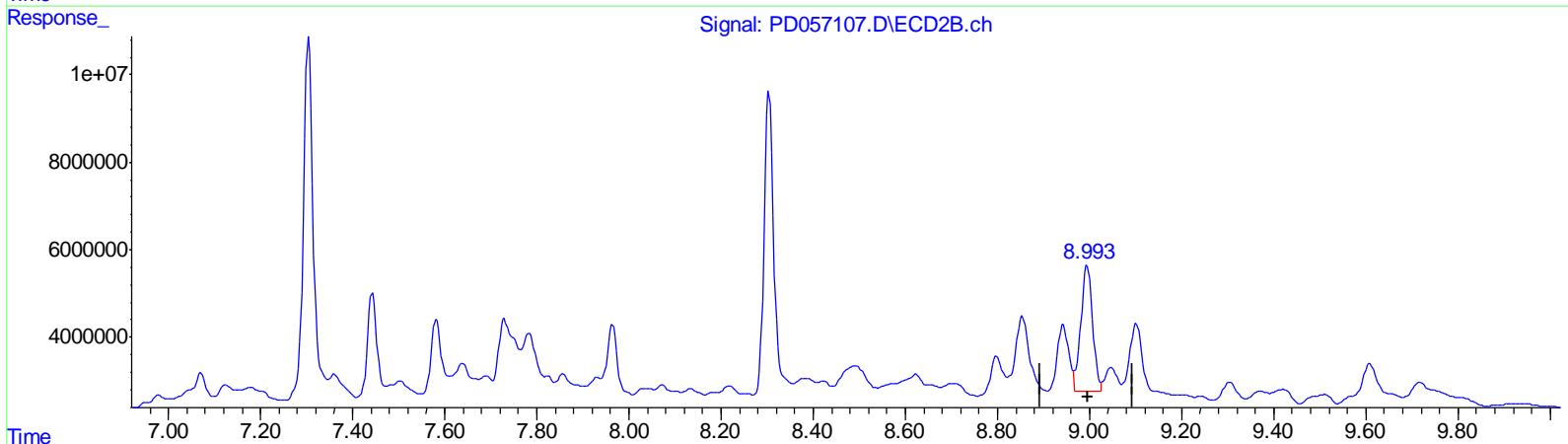
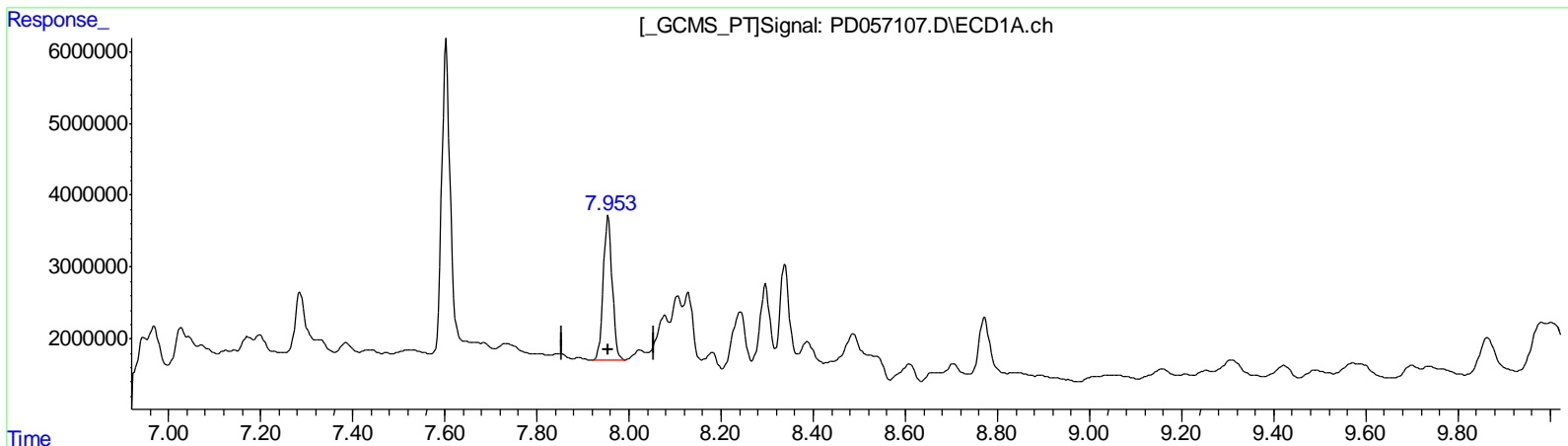
Instrument :  
 ECD\_D  
 ClientSampleID :  
 C5AS8

Manual Integrations  
 APPROVED

mohammad  
 2/3/2020 2:23:17 PM

Integration File signal 1: autoint1.e  
 Integration File signal 2: autoint2.e  
 Quant Time: Feb 01 00:38:56 2020  
 Quant Method : Z:\pestpcbsrv\HPCHEM1\ECD\_D\Method\PD012320CLP.M  
 Quant Title : GC Extractables  
 QLast Update : Fri Jan 24 08:33:42 2020  
 Response via : Initial Calibration  
 Integrator: ChemStation

Volume Inj. : 1 µl  
 Signal #1 Phase : ZB-MR2 Signal #2 Phase: ZB-MR1  
 Signal #1 Info : 30M x 0.32mm x0.2 Signal #2 Info : 30M x 0.32mm x 0.50µm



QEdit

(27) Decachlorobiphenyl (SA)

7.955min 24.984 ng/ml

response 27199049

(27) Decachlorobiphenyl #2 (SA)

8.993min 27.211 ng/ml m

response 50850658

(+) = Expected Retention Time

Data Path : Z:\pestpcbsrv\HPCHEM1\ECD\_D\Data\PD013120\  
 Data File : PD057107.D  
 Signal(s) : Signal #1: ECD1A.ch Signal #2: ECD2B.ch  
 Acq On : 31 Jan 2020 15:22  
 Operator : AJ\MA  
 Sample : L1300-19  
 Misc :  
 ALS Vial : 9 Sample Multiplier: 1

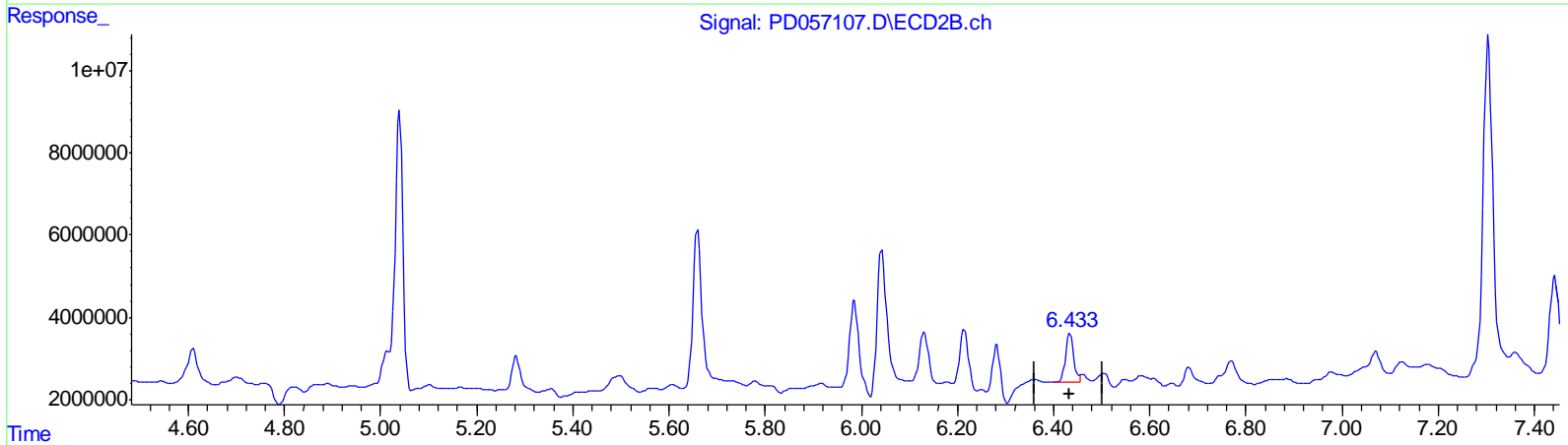
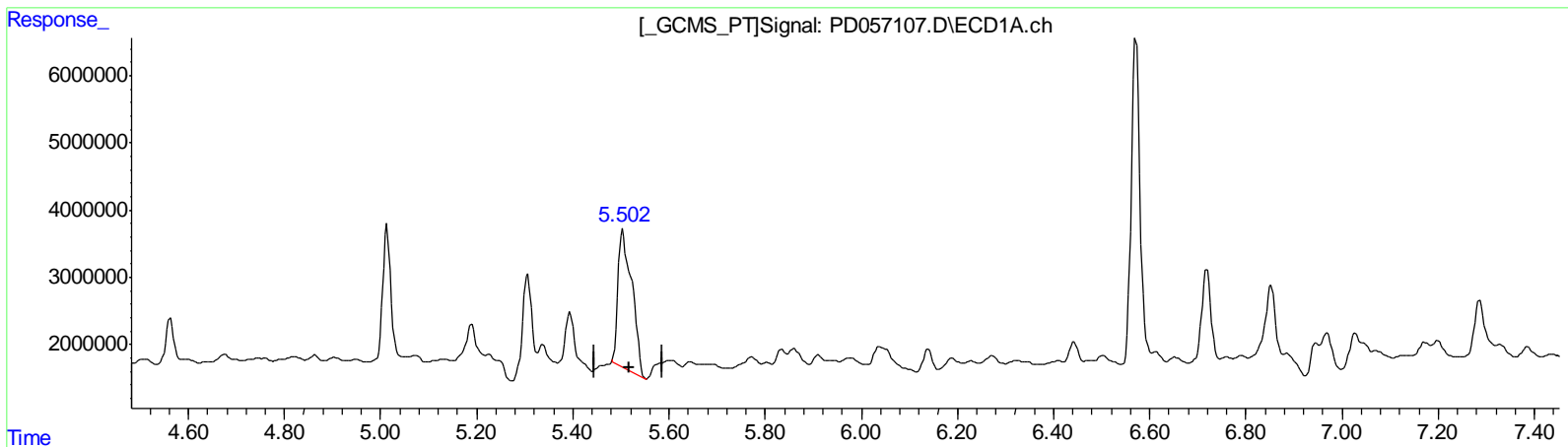
Instrument :  
 ECD\_D  
 ClientSampled :  
 C5AS8

Manual Integrations  
 APPROVED

mohammad  
 2/3/2020 2:23:17 PM

Integration File signal 1: autoint1.e  
 Integration File signal 2: autoint2.e  
 Quant Time: Feb 01 00:38:56 2020  
 Quant Method : Z:\pestpcbsrv\HPCHEM1\ECD\_D\Method\PD012320CLP.M  
 Quant Title : GC Extractables  
 QLast Update : Fri Jan 24 08:33:42 2020  
 Response via : Initial Calibration  
 Integrator: ChemStation

Volume Inj. : 1 µl  
 Signal #1 Phase : ZB-MR2 Signal #2 Phase: ZB-MR1  
 Signal #1 Info : 30M x 0.32mm x0.2 Signal #2 Info : 30M x 0.32mm x 0.50µm



QEdit

(13) Dieldrin (MA)  
 5.504min 34.846 ng/ml  
 response 41279269

(13) Dieldrin #2 (MA)  
 6.434min 5.838 ng/ml  
 response 13919182

(+) = Expected Retention Time

Data Path : Z:\pestpcbsrv\HPCHEM1\ECD\_D\Data\PD013120\  
 Data File : PD057107.D  
 Signal(s) : Signal #1: ECD1A.ch Signal #2: ECD2B.ch  
 Acq On : 31 Jan 2020 15:22  
 Operator : AJ\MA  
 Sample : L1300-19  
 Misc :  
 ALS Vial : 9 Sample Multiplier: 1

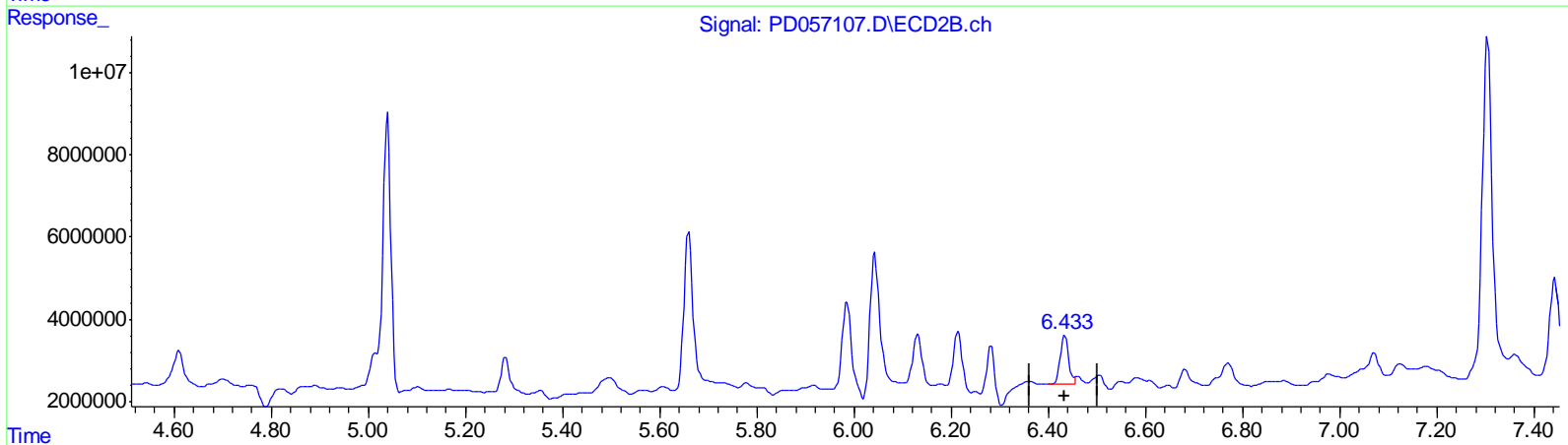
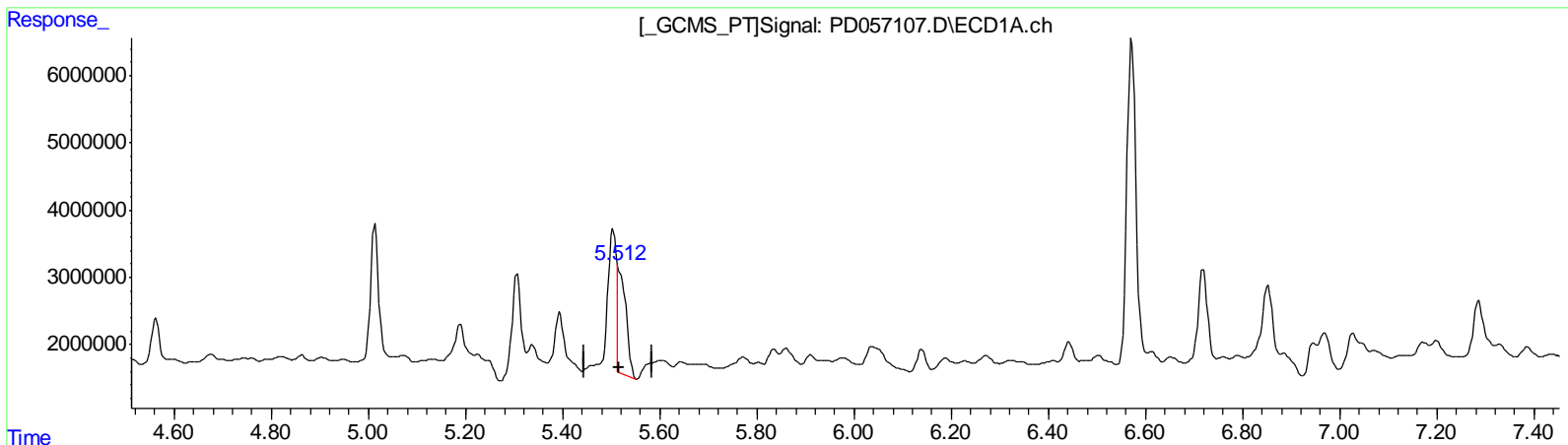
Instrument :  
 ECD\_D  
 ClientSampled :  
 C5AS8

Manual Integrations  
 APPROVED

mohammad  
 2/3/2020 2:23:17 PM

Integration File signal 1: autoint1.e  
 Integration File signal 2: autoint2.e  
 Quant Time: Feb 01 00:38:56 2020  
 Quant Method : Z:\pestpcbsrv\HPCHEM1\ECD\_D\Method\PD012320CLP.M  
 Quant Title : GC Extractables  
 QLast Update : Fri Jan 24 08:33:42 2020  
 Response via : Initial Calibration  
 Integrator: ChemStation

Volume Inj. : 1 µl  
 Signal #1 Phase : ZB-MR2 Signal #2 Phase: ZB-MR1  
 Signal #1 Info : 30M x 0.32mm x0.2 Signal #2 Info : 30M x 0.32mm x 0.50µm



QEdit

(13) Dieldrin (MA)  
 5.512min 15.670 ng/ml m  
 response 18562698

(13) Dieldrin #2 (MA)  
 6.434min 5.838 ng/ml  
 response 13919182

(+) = Expected Retention Time

Data Path : Z:\pestpcbsrv\HPCHEM1\ECD\_D\Data\PD013120\  
 Data File : PD057107.D  
 Signal(s) : Signal #1: ECD1A.ch Signal #2: ECD2B.ch  
 Acq On : 31 Jan 2020 15:22  
 Operator : AJ\MA  
 Sample : L1300-19  
 Misc :  
 ALS Vial : 9 Sample Multiplier: 1

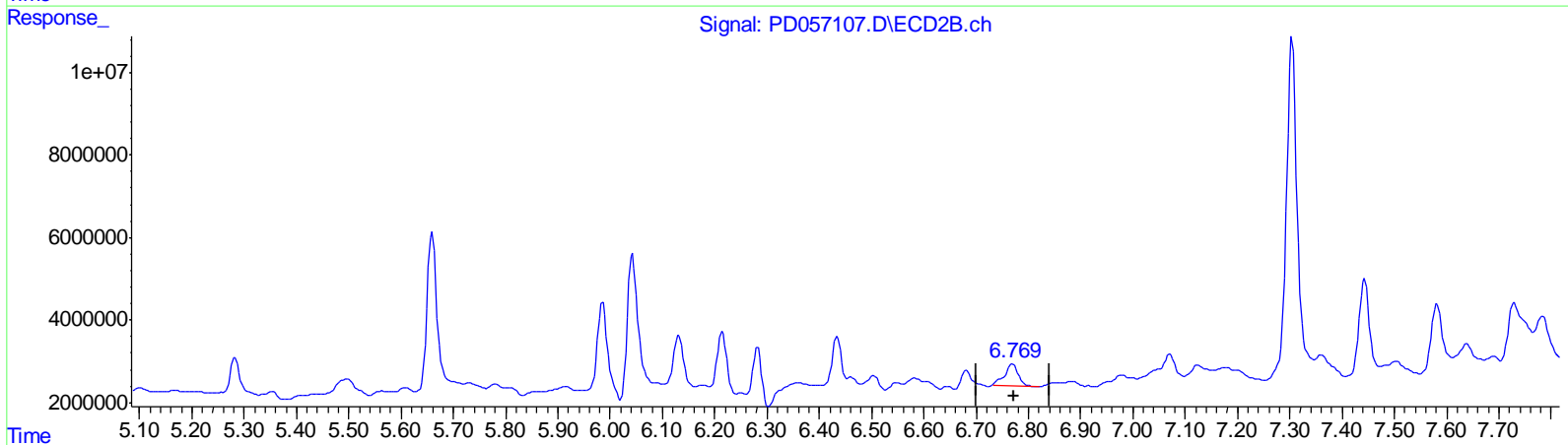
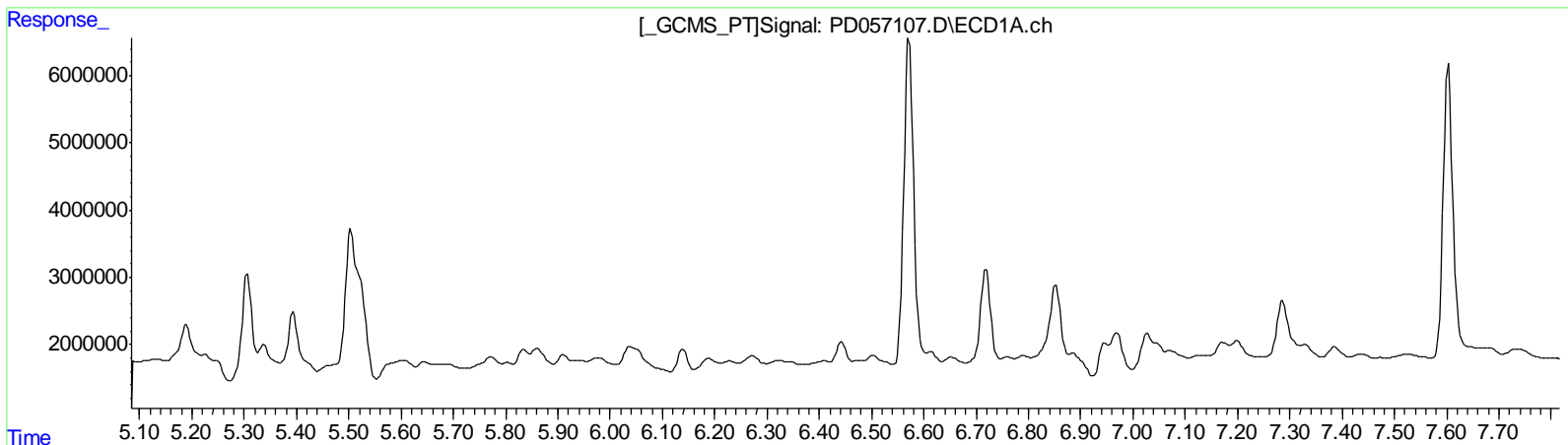
Instrument :  
 ECD\_D  
 ClientSampled :  
 C5AS8

Manual Integrations  
 APPROVED

mohammad  
 2/3/2020 2:23:17 PM

Integration File signal 1: autoint1.e  
 Integration File signal 2: autoint2.e  
 Quant Time: Feb 01 00:38:56 2020  
 Quant Method : Z:\pestpcbsrv\HPCHEM1\ECD\_D\Method\PD012320CLP.M  
 Quant Title : GC Extractables  
 QLast Update : Fri Jan 24 08:33:42 2020  
 Response via : Initial Calibration  
 Integrator: ChemStation

Volume Inj. : 1 µl  
 Signal #1 Phase : ZB-MR2 Signal #2 Phase: ZB-MR1  
 Signal #1 Info : 30M x 0.32mm x0.2 Signal #2 Info : 30M x 0.32mm x 0.50µm



QEdit

(16) 4,4'-DDD (A)  
 0.000min 0.000 ng/ml  
 response 0

(16) 4,4'-DDD #2 (A)  
 6.770min 5.458 ng/ml  
 response 10079982

(+) = Expected Retention Time

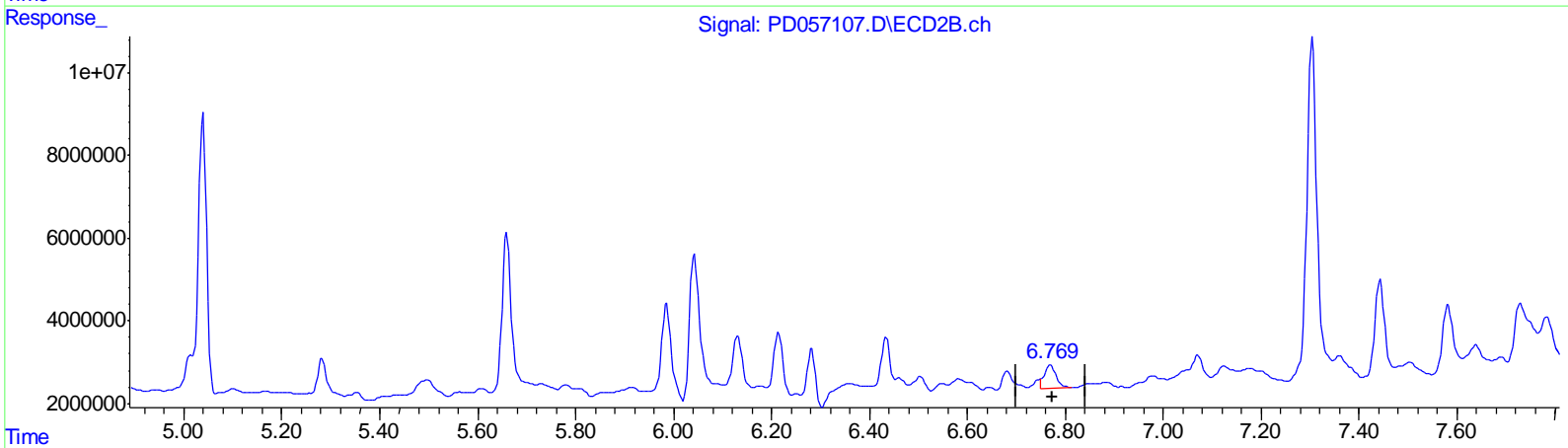
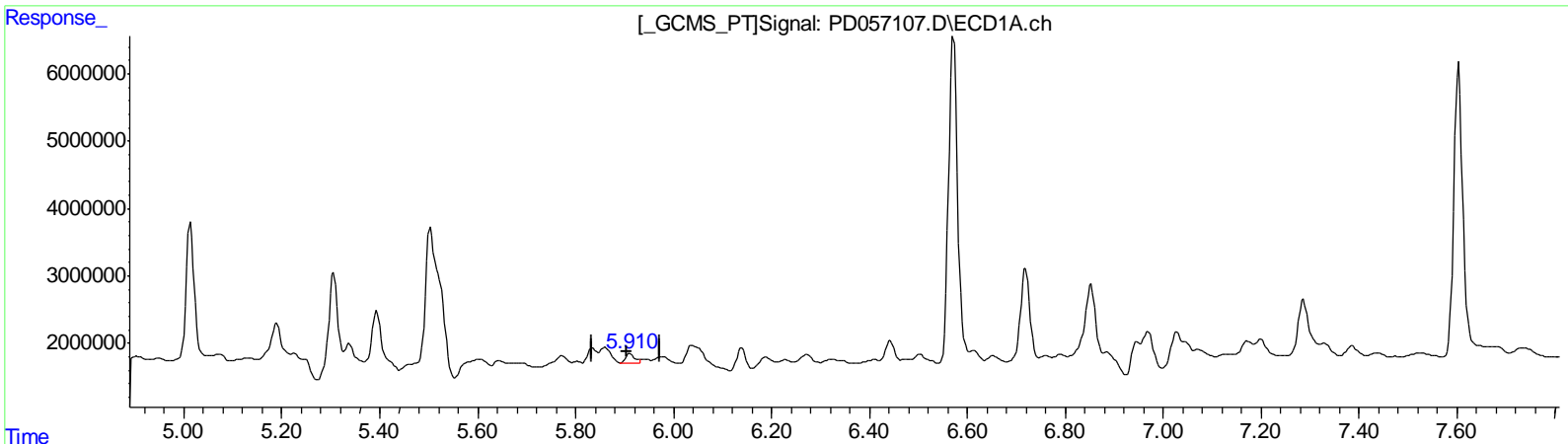
Data Path : Z:\pestpcbsrv\HPCHEM1\ECD\_D\Data\PD013120\  
 Data File : PD057107.D  
 Signal(s) : Signal #1: ECD1A.ch Signal #2: ECD2B.ch  
 Acq On : 31 Jan 2020 15:22  
 Operator : AJ\MA  
 Sample : L1300-19  
 Misc :  
 ALS Vial : 9 Sample Multiplier: 1

**Instrument :**  
 ECD\_D  
**ClientSampled :**  
 C5AS8

**Manual Integrations**  
**APPROVED**  
 mohammad  
 2/3/2020 2:23:17 PM

Integration File signal 1: autoint1.e  
 Integration File signal 2: autoint2.e  
 Quant Time: Feb 01 00:38:56 2020  
 Quant Method : Z:\pestpcbsrv\HPCHEM1\ECD\_D\Method\PD012320CLP.M  
 Quant Title : GC Extractables  
 QLast Update : Fri Jan 24 08:33:42 2020  
 Response via : Initial Calibration  
 Integrator: ChemStation

Volume Inj. : 1 µl  
 Signal #1 Phase : ZB-MR2 Signal #2 Phase: ZB-MR1  
 Signal #1 Info : 30M x 0.32mm x0.2 Signal #2 Info : 30M x 0.32mm x 0.50µm



(16) 4,4'-DDD (A)  
 5.910min 1.984 ng/ml m  
 response 1759043

(16) 4,4'-DDD #2 (A)  
 6.769min 5.389 ng/ml m  
 response 9953596

(+) = Expected Retention Time

Data Path : Z:\pestpcbsrv\HPCHEM1\ECD\_D\Data\PD013120\  
 Data File : PD057107.D  
 Signal(s) : Signal #1: ECD1A.ch Signal #2: ECD2B.ch  
 Acq On : 31 Jan 2020 15:22  
 Operator : AJ\MA  
 Sample : L1300-19  
 Misc :  
 ALS Vial : 9 Sample Multiplier: 1

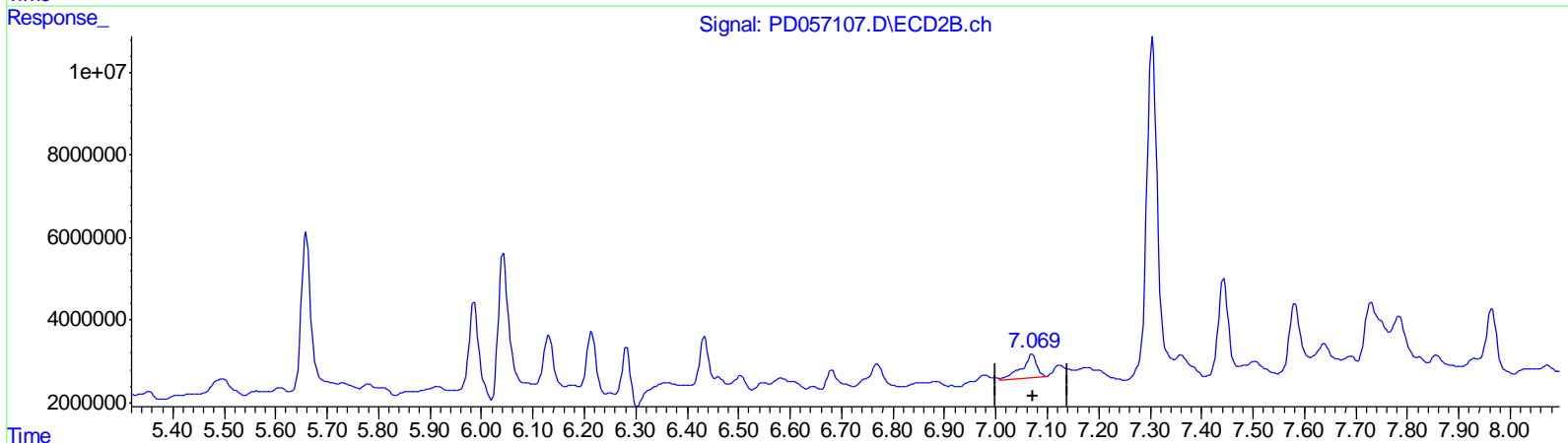
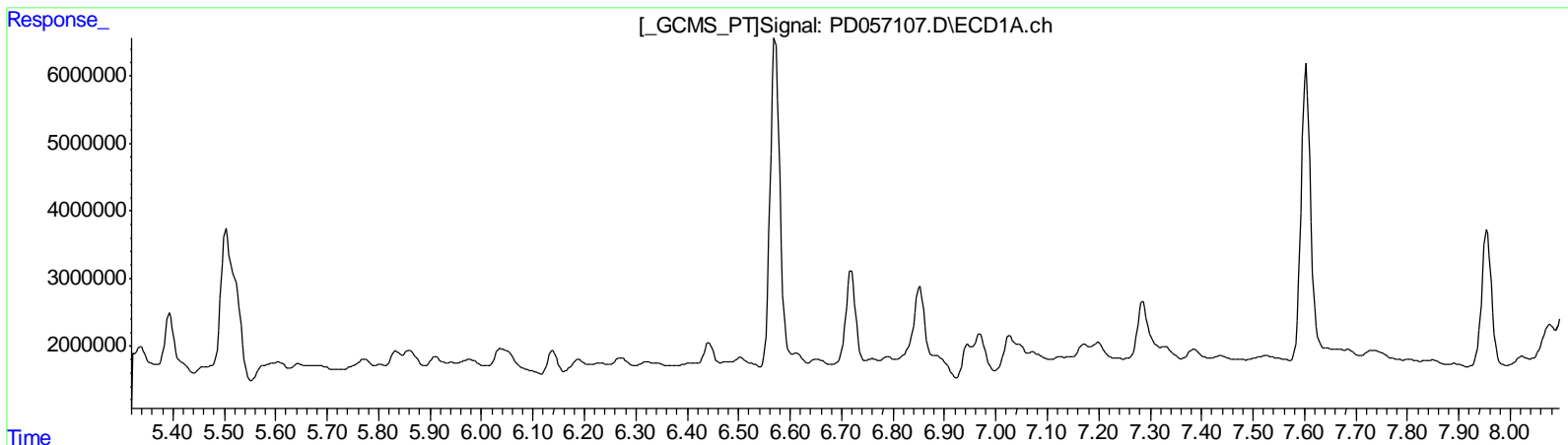
Instrument :  
 ECD\_D  
 ClientSampled :  
 C5AS8

Manual Integrations  
 APPROVED

mohammad  
 2/3/2020 2:23:17 PM

Integration File signal 1: autoint1.e  
 Integration File signal 2: autoint2.e  
 Quant Time: Feb 01 00:38:56 2020  
 Quant Method : Z:\pestpcbsrv\HPCHEM1\ECD\_D\Method\PD012320CLP.M  
 Quant Title : GC Extractables  
 QLast Update : Fri Jan 24 08:33:42 2020  
 Response via : Initial Calibration  
 Integrator: ChemStation

Volume Inj. : 1 µl  
 Signal #1 Phase : ZB-MR2 Signal #2 Phase: ZB-MR1  
 Signal #1 Info : 30M x 0.32mm x0.2 Signal #2 Info : 30M x 0.32mm x 0.50µm



QEdit

(17) 4,4'-DDT (MA)  
 0.000min 0.000 ng/ml  
 response 0

(17) 4,4'-DDT #2 (MA)  
 7.071min 5.766 ng/ml  
 response 11208799

(+) = Expected Retention Time

Data Path : Z:\pestpcbsrv\HPCHEM1\ECD\_D\Data\PD013120\  
 Data File : PD057107.D  
 Signal(s) : Signal #1: ECD1A.ch Signal #2: ECD2B.ch  
 Acq On : 31 Jan 2020 15:22  
 Operator : AJ\MA  
 Sample : L1300-19  
 Misc :  
 ALS Vial : 9 Sample Multiplier: 1

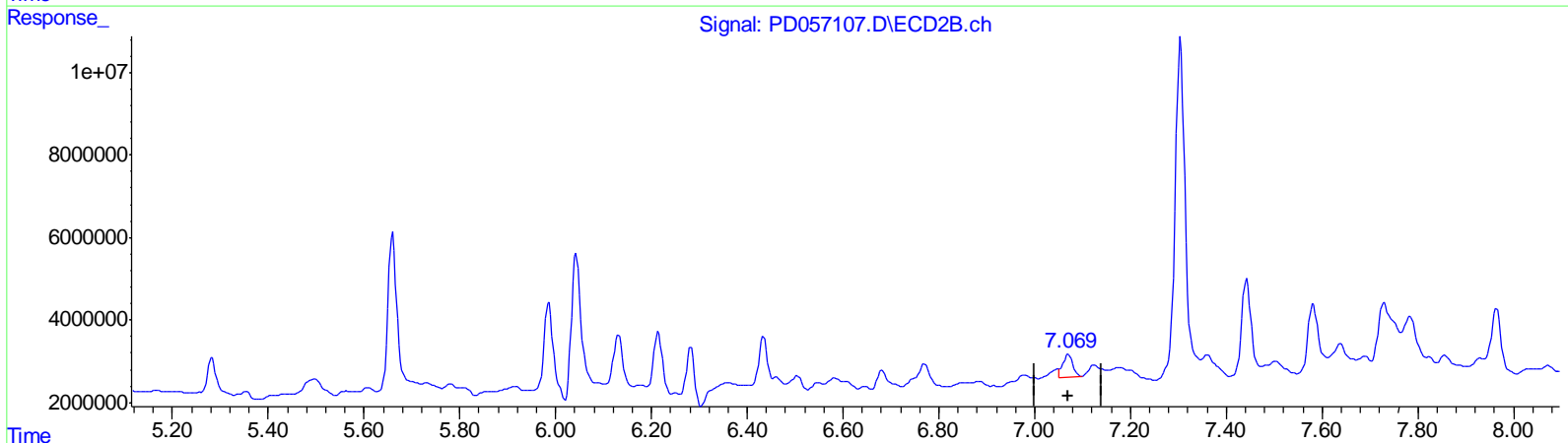
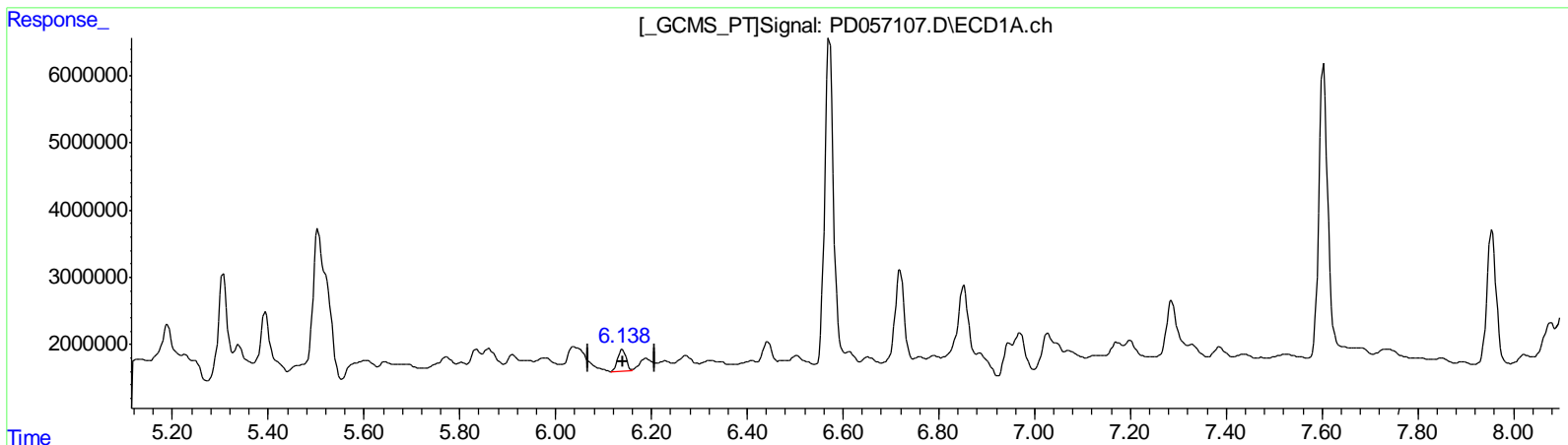
Instrument :  
 ECD\_D  
 ClientSampled :  
 C5AS8

Manual Integrations  
 APPROVED

mohammad  
 2/3/2020 2:23:17 PM

Integration File signal 1: autoint1.e  
 Integration File signal 2: autoint2.e  
 Quant Time: Feb 01 00:38:56 2020  
 Quant Method : Z:\pestpcbsrv\HPCHEM1\ECD\_D\Method\PD012320CLP.M  
 Quant Title : GC Extractables  
 QLast Update : Fri Jan 24 08:33:42 2020  
 Response via : Initial Calibration  
 Integrator: ChemStation

Volume Inj. : 1 µl  
 Signal #1 Phase : ZB-MR2 Signal #2 Phase: ZB-MR1  
 Signal #1 Info : 30M x 0.32mm x0.2 Signal #2 Info : 30M x 0.32mm x 0.50µm



(17) 4,4'-DDT (MA)

6.138min 4.701 ng/ml m  
 response 4037603

(17) 4,4'-DDT #2 (MA)

7.069min 4.024 ng/ml m  
 response 7822368

(+) = Expected Retention Time



Data Path : Z:\pestpcbsrv\HPCHEM1\ECD\_D\Data\PD013120\  
 Data File : PD057107.D  
 Signal(s) : Signal #1: ECD1A.ch Signal #2: ECD2B.ch  
 Acq On : 31 Jan 2020 15:22  
 Operator : AJ\MA  
 Sample : L1300-19  
 Misc :  
 ALS Vial : 9 Sample Multiplier: 1

Instrument :  
 ECD\_D  
 Client Sampled :  
 C5AS8

Manual Integrations  
 APPROVED

mohammad  
 2/3/2020 2:23:17 PM

Integration File signal 1: autoint1.e  
 Integration File signal 2: autoint2.e  
 Quant Time: Feb 01 00:38:56 2020  
 Quant Method : Z:\pestpcbsrv\HPCHEM1\ECD\_D\Method\PD012320CLP.M  
 Quant Title : GC Extractables  
 QLast Update : Fri Jan 24 08:33:42 2020  
 Response via : Initial Calibration  
 Integrator: ChemStation

Volume Inj. : 1 µl  
 Signal #1 Phase : ZB-MR2 Signal #2 Phase: ZB-MR1  
 Signal #1 Info : 30M x 0.32mm x0.2 Signal #2 Info : 30M x 0.32mm x 0.50µm

Compound	RT#1	RT#2	Resp#1	Resp#2	ng/ml	ng/ml
-----						
System Monitoring Compounds						
1) SA Tetrachlo...	3.285	3.960	13232337	27102484	14.635	14.646
27) SA Decachlor...	7.955	8.993	27199049	50850658	24.984	27.211m
Target Compounds						
12) B 4,4'-DDE	5.394	6.282	10620307	13924412	9.421	6.302 #
13) MA Dieldrin	5.512	6.434	18562698	13919182	15.670m	5.838 #
16) A 4,4'-DDD	5.910	6.769	1759043	9953596	1.984m	5.389m#
17) MA 4,4'-DDT	6.138	7.069	4037603	7822368	4.701m	4.024m
-----						

SJ  
 02/05/20

(f)=RT Delta > 1/2 Window (#)=Amounts differ by > 25% (m)=manual int.