

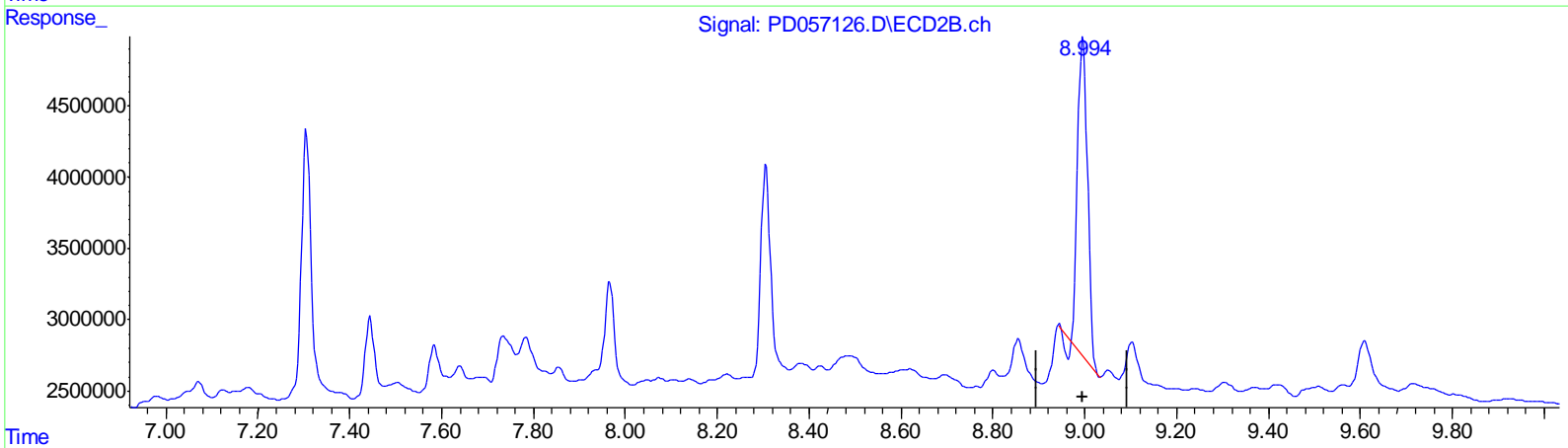
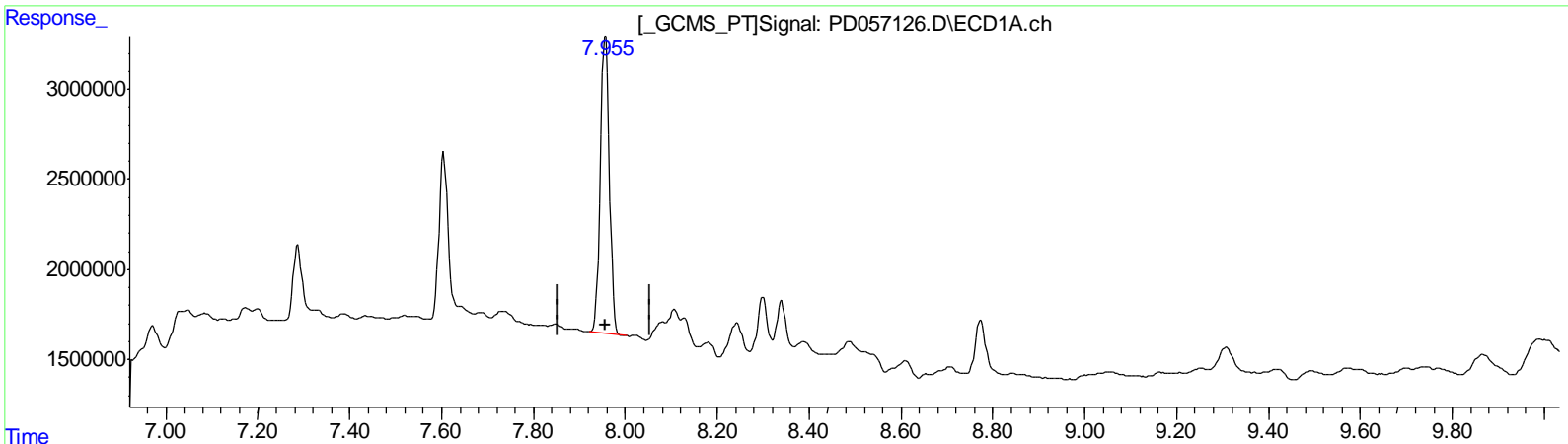
Data Path : Z:\pestpcbsrv\HPCHEM1\ECD_D\Data\PD013120\
 Data File : PD057126.D
 Signal(s) : Signal #1: ECD1A.ch Signal #2: ECD2B.ch
 Acq On : 31 Jan 2020 20:08
 Operator : AJ\MA
 Sample : L1300-06
 Misc :
 ALS Vial : 27 Sample Multiplier: 1

Instrument :
 ECD_D
ClientSampled :
 C5AN8

Manual Integrations
APPROVED
 mohammad
 2/3/2020 2:24:02 PM

Integration File signal 1: autoint1.e
 Integration File signal 2: autoint2.e
 Quant Time: Feb 01 03:26:27 2020
 Quant Method : Z:\pestpcbsrv\HPCHEM1\ECD_D\Method\PD012320CLP.M
 Quant Title : GC Extractables
 QLast Update : Fri Jan 24 08:33:42 2020
 Response via : Initial Calibration
 Integrator: ChemStation

Volume Inj. : 1 µl
 Signal #1 Phase : ZB-MR2 Signal #2 Phase: ZB-MR1
 Signal #1 Info : 30M x 0.32mm x0.2 Signal #2 Info : 30M x 0.32mm x 0.50µm



QEdit

(27) Decachlorobiphenyl (SA)
 7.956min 20.743 ng/ml
 response 22582484

(27) Decachlorobiphenyl #2 (SA)
 8.996min 18.000 ng/ml
 response 33637653

(+) = Expected Retention Time

Data Path : Z:\pestpcbsrv\HPCHEM1\ECD_D\Data\PD013120\
 Data File : PD057126.D
 Signal(s) : Signal #1: ECD1A.ch Signal #2: ECD2B.ch
 Acq On : 31 Jan 2020 20:08
 Operator : AJ\MA
 Sample : L1300-06
 Misc :
 ALS Vial : 27 Sample Multiplier: 1

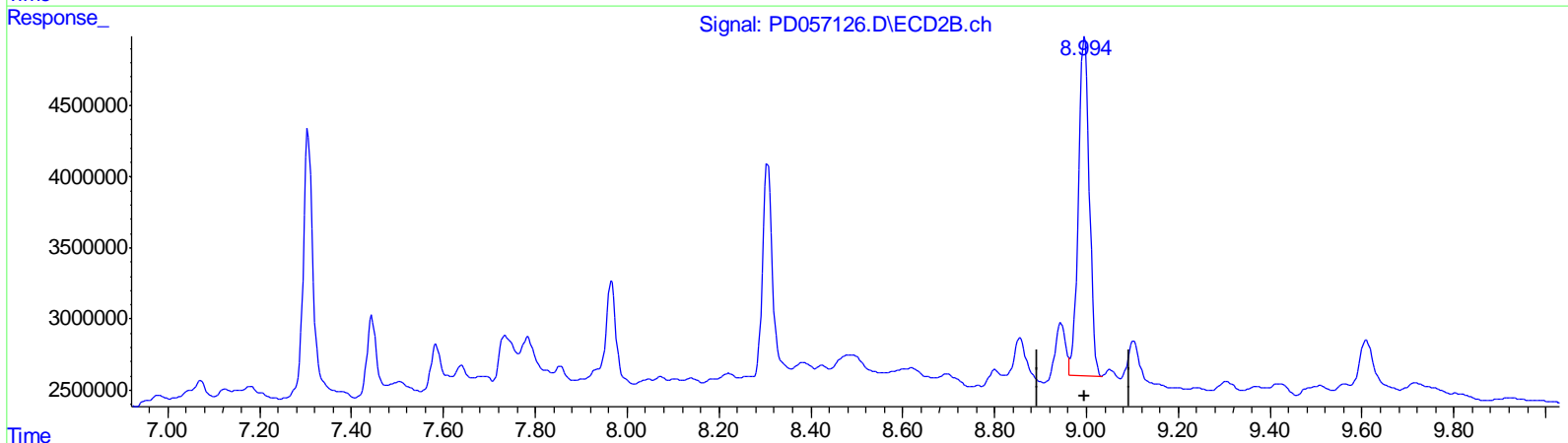
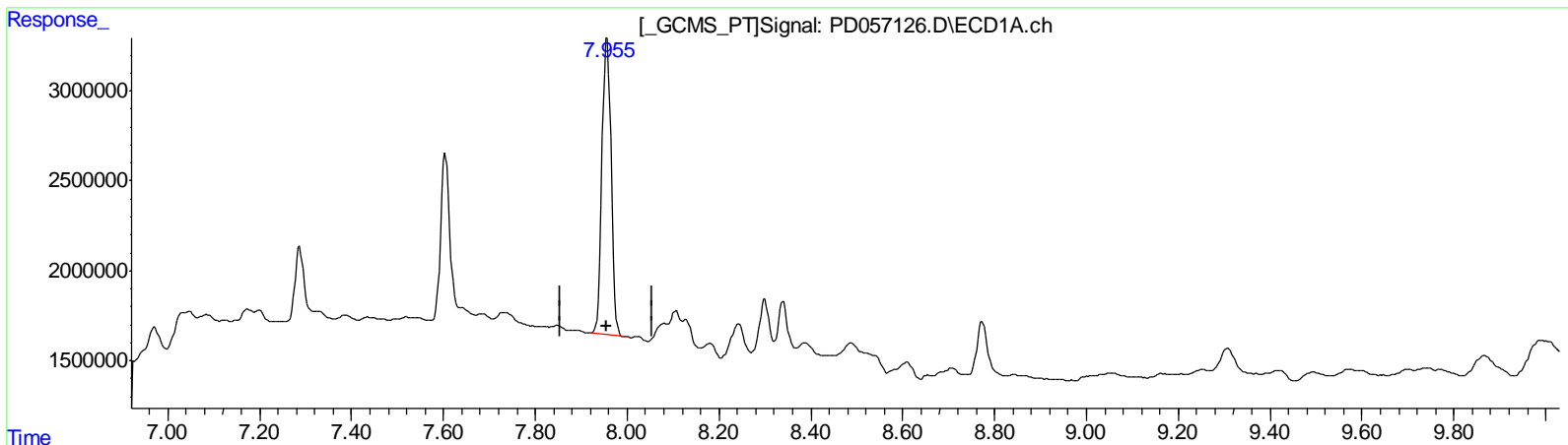
Instrument :
 ECD_D
 ClientSampled :
 C5AN8

Manual Integrations
 APPROVED

mohammad
 2/3/2020 2:24:02 PM

Integration File signal 1: autoint1.e
 Integration File signal 2: autoint2.e
 Quant Time: Feb 01 03:26:27 2020
 Quant Method : Z:\pestpcbsrv\HPCHEM1\ECD_D\Method\PD012320CLP.M
 Quant Title : GC Extractables
 QLast Update : Fri Jan 24 08:33:42 2020
 Response via : Initial Calibration
 Integrator: ChemStation

Volume Inj. : 1 µl
 Signal #1 Phase : ZB-MR2 Signal #2 Phase: ZB-MR1
 Signal #1 Info : 30M x 0.32mm x0.2 Signal #2 Info : 30M x 0.32mm x 0.50µm



QEdit

(27) Decachlorobiphenyl (SA)

7.956min 20.743 ng/ml

response 22582484

(27) Decachlorobiphenyl #2 (SA)

8.994min 21.229 ng/ml m

response 39671297

(+) = Expected Retention Time

Data Path : Z:\pestpcbsrv\HPCHEM1\ECD_D\Data\PD013120\
 Data File : PD057126.D
 Signal(s) : Signal #1: ECD1A.ch Signal #2: ECD2B.ch
 Acq On : 31 Jan 2020 20:08
 Operator : AJ\MA
 Sample : L1300-06
 Misc :
 ALS Vial : 27 Sample Multiplier: 1

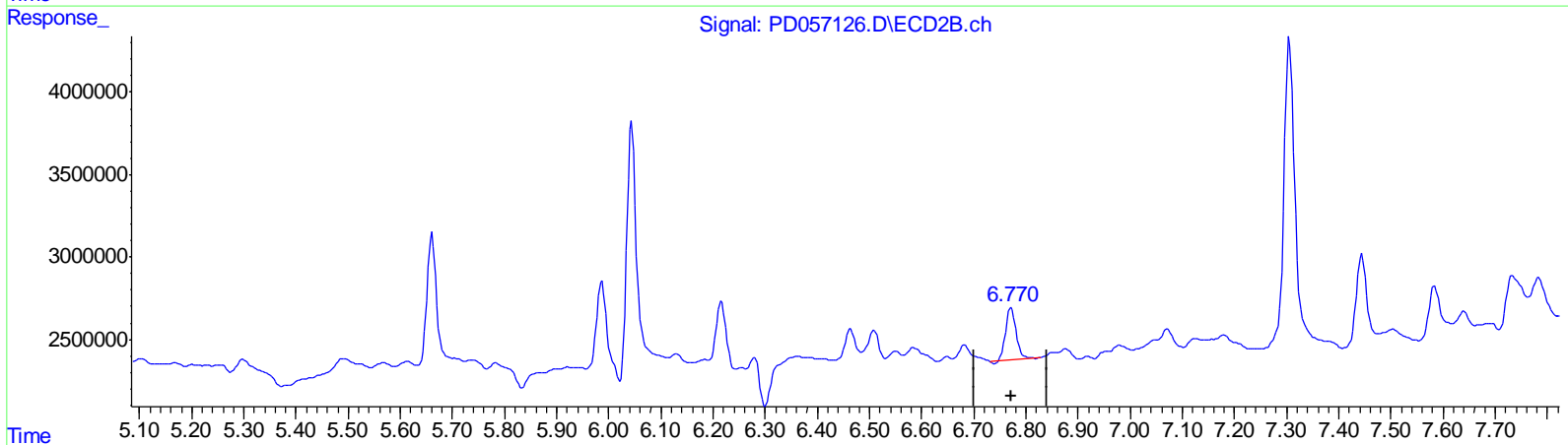
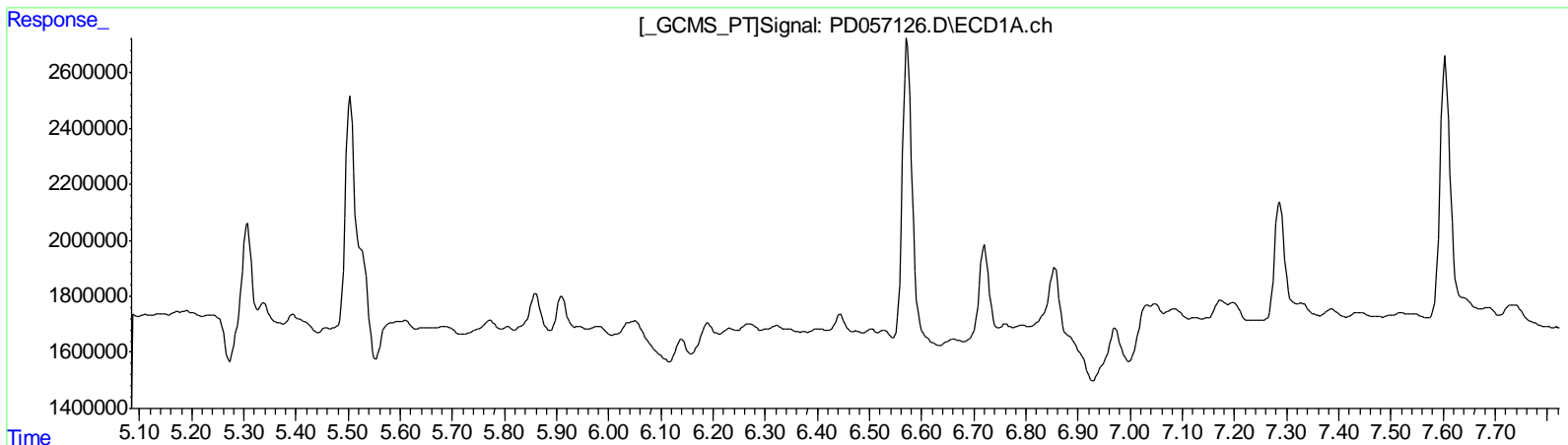
Instrument :
 ECD_D
 ClientSampled :
 C5AN8

Manual Integrations
 APPROVED

mohammad
 2/3/2020 2:24:02 PM

Integration File signal 1: autoint1.e
 Integration File signal 2: autoint2.e
 Quant Time: Feb 01 03:26:27 2020
 Quant Method : Z:\pestpcbsrv\HPCHEM1\ECD_D\Method\PD012320CLP.M
 Quant Title : GC Extractables
 QLast Update : Fri Jan 24 08:33:42 2020
 Response via : Initial Calibration
 Integrator: ChemStation

Volume Inj. : 1 µl
 Signal #1 Phase : ZB-MR2 Signal #2 Phase: ZB-MR1
 Signal #1 Info : 30M x 0.32mm x0.2 Signal #2 Info : 30M x 0.32mm x 0.50µm



QEdit

(16) 4,4'-DDD (A)
 0.000min 0.000 ng/ml
 response 0

(16) 4,4'-DDD #2 (A)
 6.772min 2.413 ng/ml
 response 4455811

(+) = Expected Retention Time

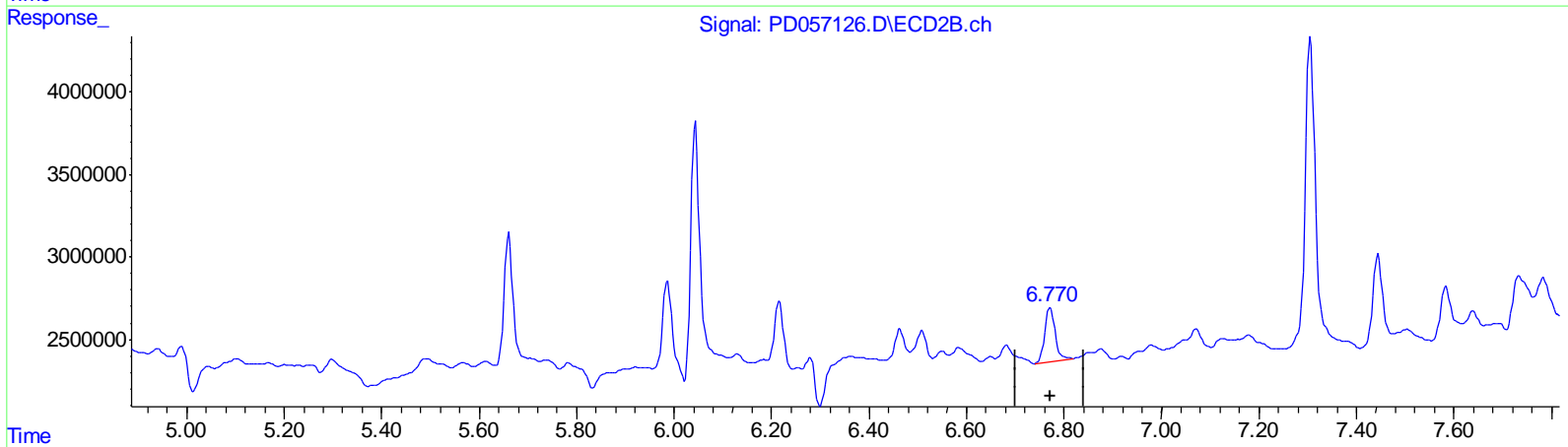
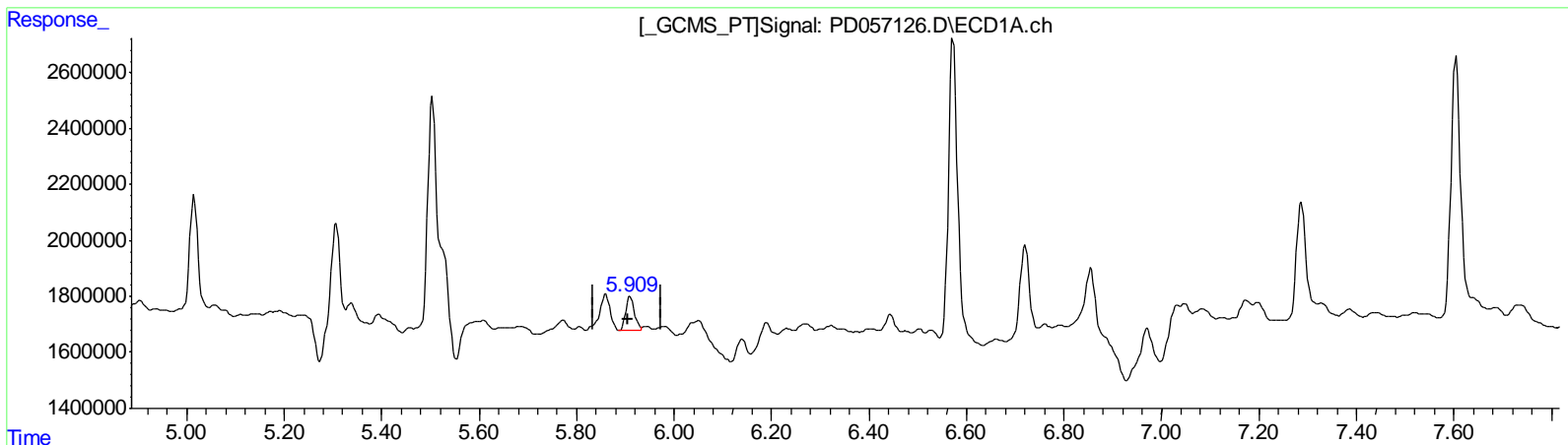
Data Path : Z:\pestpcbsrv\HPCHEM1\ECD_D\Data\PD013120\
 Data File : PD057126.D
 Signal(s) : Signal #1: ECD1A.ch Signal #2: ECD2B.ch
 Acq On : 31 Jan 2020 20:08
 Operator : AJ\MA
 Sample : L1300-06
 Misc :
 ALS Vial : 27 Sample Multiplier: 1

Instrument :
 ECD_D
ClientSampled :
 C5AN8

Manual Integrations
APPROVED
 mohammad
 2/3/2020 2:24:02 PM

Integration File signal 1: autoint1.e
 Integration File signal 2: autoint2.e
 Quant Time: Feb 01 03:26:27 2020
 Quant Method : Z:\pestpcbsrv\HPCHEM1\ECD_D\Method\PD012320CLP.M
 Quant Title : GC Extractables
 QLast Update : Fri Jan 24 08:33:42 2020
 Response via : Initial Calibration
 Integrator: ChemStation

Volume Inj. : 1 µl
 Signal #1 Phase : ZB-MR2 Signal #2 Phase: ZB-MR1
 Signal #1 Info : 30M x 0.32mm x0.2 Signal #2 Info : 30M x 0.32mm x 0.50µm



QEdit

(16) 4,4'-DDD (A)
 5.909min 1.663 ng/ml m
 response 1474609

(16) 4,4'-DDD #2 (A)
 6.770min 2.646 ng/ml m
 response 4886890

(+) = Expected Retention Time

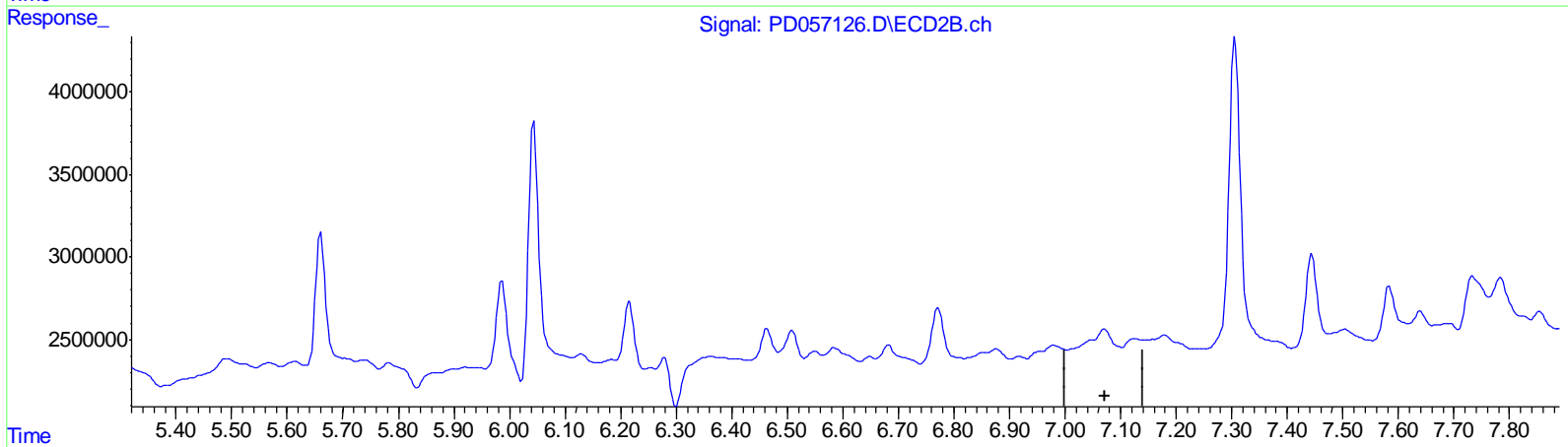
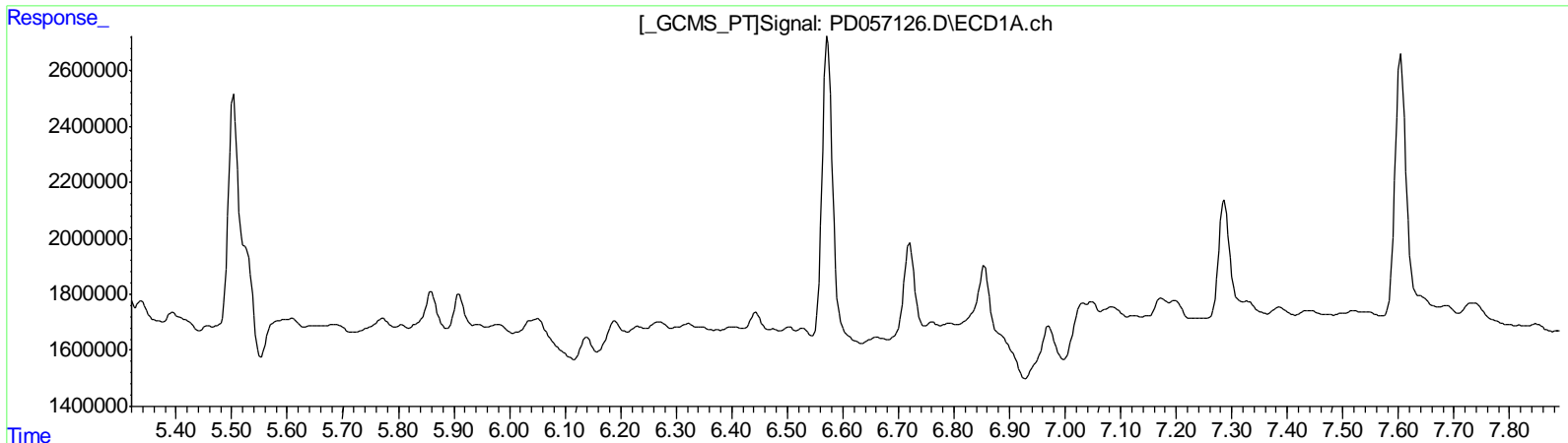
Data Path : Z:\pestpcbsrv\HPCHEM1\ECD_D\Data\PD013120\
 Data File : PD057126.D
 Signal(s) : Signal #1: ECD1A.ch Signal #2: ECD2B.ch
 Acq On : 31 Jan 2020 20:08
 Operator : AJ\MA
 Sample : L1300-06
 Misc :
 ALS Vial : 27 Sample Multiplier: 1

Instrument :
 ECD_D
ClientSampled :
 C5AN8

Manual Integrations
APPROVED
 mohammad
 2/3/2020 2:24:02 PM

Integration File signal 1: autoint1.e
 Integration File signal 2: autoint2.e
 Quant Time: Feb 01 03:26:27 2020
 Quant Method : Z:\pestpcbsrv\HPCHEM1\ECD_D\Method\PD012320CLP.M
 Quant Title : GC Extractables
 QLast Update : Fri Jan 24 08:33:42 2020
 Response via : Initial Calibration
 Integrator: ChemStation

Volume Inj. : 1 µl
 Signal #1 Phase : ZB-MR2 Signal #2 Phase: ZB-MR1
 Signal #1 Info : 30M x 0.32mm x0.2 Signal #2 Info : 30M x 0.32mm x 0.50µm



QEdit

(17) 4,4'-DDT (MA)
 0.000min 0.000 ng/ml
 response 0

(17) 4,4'-DDT #2 (MA)
 0.000min 0.000 ng/ml
 response 0

(+) = Expected Retention Time

Data Path : Z:\pestpcbsrv\HPCHEM1\ECD_D\Data\PD013120\
 Data File : PD057126.D
 Signal(s) : Signal #1: ECD1A.ch Signal #2: ECD2B.ch
 Acq On : 31 Jan 2020 20:08
 Operator : AJ\MA
 Sample : L1300-06
 Misc :
 ALS Vial : 27 Sample Multiplier: 1

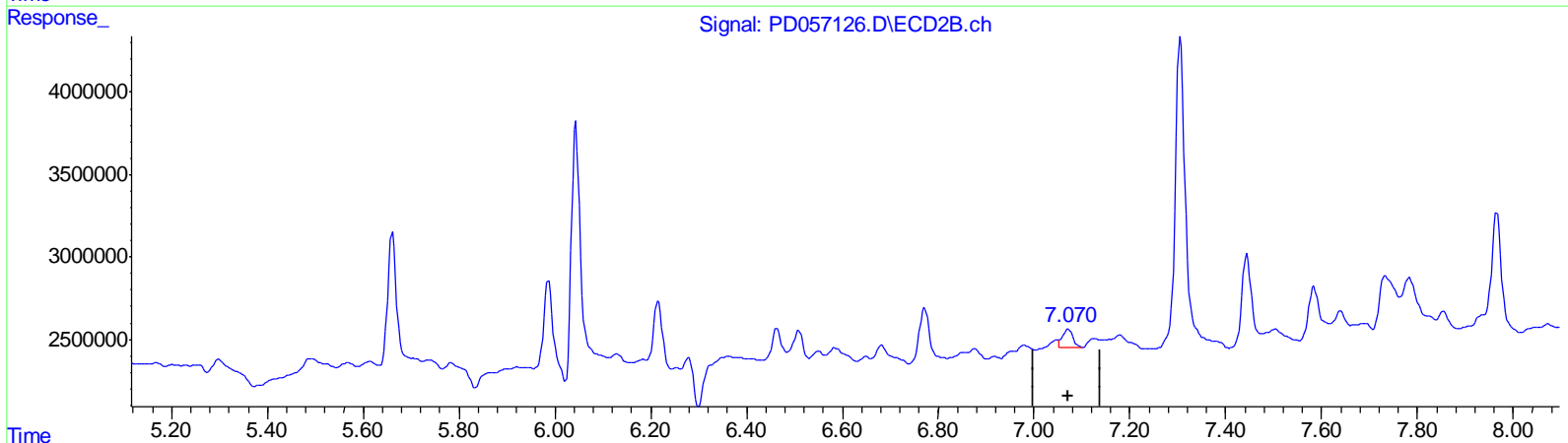
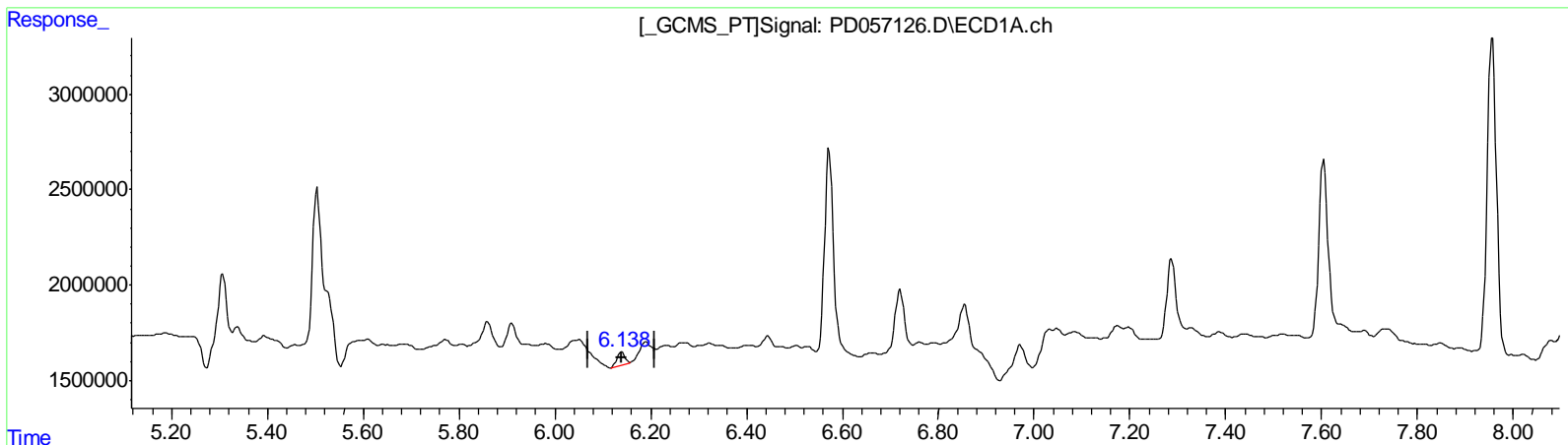
Instrument :
 ECD_D
 ClientSampled :
 C5AN8

Manual Integrations
 APPROVED

mohammad
 2/3/2020 2:24:02 PM

Integration File signal 1: autoint1.e
 Integration File signal 2: autoint2.e
 Quant Time: Feb 01 03:26:27 2020
 Quant Method : Z:\pestpcbsrv\HPCHEM1\ECD_D\Method\PD012320CLP.M
 Quant Title : GC Extractables
 QLast Update : Fri Jan 24 08:33:42 2020
 Response via : Initial Calibration
 Integrator: ChemStation

Volume Inj. : 1 µl
 Signal #1 Phase : ZB-MR2 Signal #2 Phase: ZB-MR1
 Signal #1 Info : 30M x 0.32mm x0.2 Signal #2 Info : 30M x 0.32mm x 0.50µm



QEdit

(17) 4,4'-DDT (MA)
 6.138min 0.925 ng/ml m
 response 794386

(17) 4,4'-DDT #2 (MA)
 7.070min 0.871 ng/ml m
 response 1694188

(+) = Expected Retention Time

Data Path : Z:\pestpcbsrv\HPCHEM1\ECD_D\Data\PD013120\
 Data File : PD057126.D
 Signal(s) : Signal #1: ECD1A.ch Signal #2: ECD2B.ch
 Acq On : 31 Jan 2020 20:08
 Operator : AJ\MA
 Sample : L1300-06
 Misc :
 ALS Vial : 27 Sample Multiplier: 1

Instrument :
 ECD_D
 ClientSampleId :
 C5AN8

Integration File signal 1: autoint1.e
 Integration File signal 2: autoint2.e
 Quant Time: Feb 01 03:26:27 2020
 Quant Method : Z:\pestpcbsrv\HPCHEM1\ECD_D\Method\PD012320CLP.M
 Quant Title : GC Extractables
 QLast Update : Fri Jan 24 08:33:42 2020
 Response via : Initial Calibration
 Integrator: ChemStation

Manual Integrations
 APPROVED

mohammad
 2/3/2020 2:24:02 PM

Volume Inj. : 1 µl
 Signal #1 Phase : ZB-MR2 Signal #2 Phase: ZB-MR1
 Signal #1 Info : 30M x 0.32mm x0.2 Signal #2 Info : 30M x 0.32mm x 0.50µm

Compound	RT#1	RT#2	Resp#1	Resp#2	ng/ml	ng/ml

System Monitoring Compounds						
1) SA Tetrachlo...	3.286	3.961	12179715	26029783	13.470	14.066
27) SA Decachlor...	7.956	8.994	22582484	39671297	20.743	21.229m
Target Compounds						
16) A 4,4'-DDD	5.909	6.770	1474609	4886890	1.663m	2.646m#
17) MA 4,4'-DDT	6.138	7.070	794386	1694188	0.925m	0.871m

SJ
 02/05/20

(f)=RT Delta > 1/2 Window (#)=Amounts differ by > 25% (m)=manual int.