

Data Path : Z:\pestpcbsrv\HPCHEM1\ECD_D\Data\PD013124\
 Data File : PD080985.D
 Signal(s) : Signal #1: ECD1A.ch Signal #2: ECD2B.ch
 Acq On : 31 Jan 2024 15:47
 Operator : AR\AJ
 Sample : P1296-01
 Misc :
 ALS Vial : 8 Sample Multiplier: 1

Instrument :
 ECD_D
 ClientSampleId :
 EO-01-013024

Integration File signal 1: autoint1.e
 Integration File signal 2: autoint2.e
 Quant Time: Jan 31 19:10:31 2024
 Quant Method : Z:\pestpcbsrv\HPCHEM1\ECD_D\Method\PD012424.M
 Quant Title : GC Extractables
 QLast Update : Thu Jan 25 11:14:56 2024
 Response via : Initial Calibration
 Integrator: ChemStation

Volume Inj. : 1 µl
 Signal #1 Phase : ZB-MR2 Signal #2 Phase: ZB-MR2
 Signal #1 Info : 30M x 0.32mm x0.5 Signal #2 Info : 30M x 0.32mm x 0.25µm

Compound	RT#1	RT#2	Resp#1	Resp#2	ng/ml	ng/ml

System Monitoring Compounds						
1) SA Tetrachlo...	3.567	2.796	19276473	33267593	13.579	13.907
28) SA Decachlor...	9.113	7.934	27007501	33632408	13.420	12.627
Target Compounds						
2) A alpha-BHC	3.997f	3.284	94281	198825	0.038	0.052 #
3) MA gamma-BHC...	0.000	3.644f	0	43518	N.D.	0.012 #
4) MA Heptachlor	4.936	3.967	185726	215765	0.075	0.063
7) B delta-BHC	4.794	0.000	826828	0	0.330	N.D. #
8) B Heptachlo...	5.711	0.000	115948	0	0.052	N.D. #
10) B gamma-Chl...	5.977	5.024f	345857	1610542	0.158	0.492 #
11) B alpha-Chl...	6.060	5.064	1054159	1157841	0.484	0.354 #
12) B 4,4'-DDE	6.226	5.252	811881	1474208	0.399	0.481
14) MA Endrin	0.000	5.675f	0	399155	N.D.	0.135 #
15) B Endosulfa...	6.825	5.957	181635	546222	0.094	0.190 #
17) MA 4,4'-DDT	7.060	6.055	192054	253955	0.108	0.096
18) B Endrin al...	0.000	6.147f	0	245913	N.D.	0.109 #
23) Chlordane-1	0.000	3.796	0	44974	N.D.	0.442 #
24) Chlordane-2	0.000	4.373	0	459123	N.D.	3.746 #
25) Chlordane-3	5.977	5.024f	345857	1610542	1.095	4.799 #
26) Chlordane-4	6.060	5.064	1054159	1157841	2.769	3.645 #
27) Chlordane-5	6.911	5.957	249269	546222	3.571	4.505 #

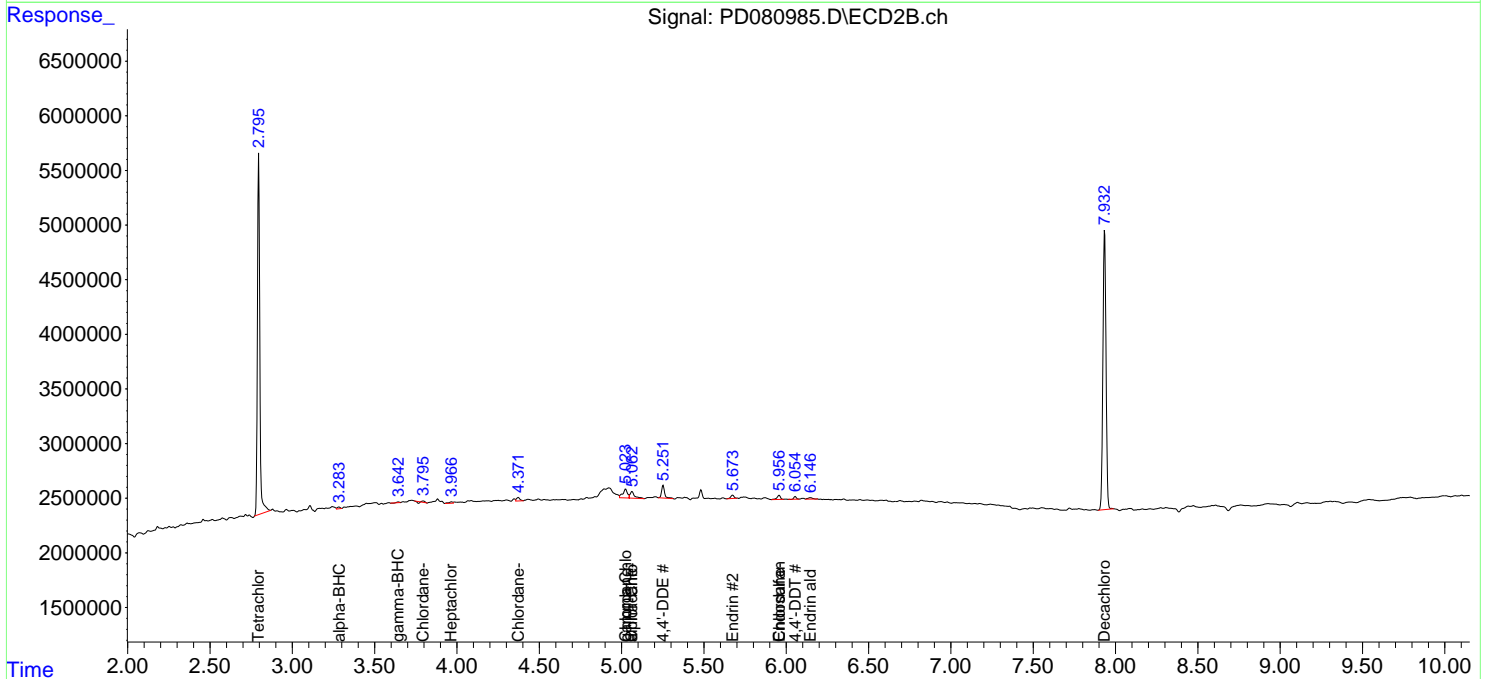
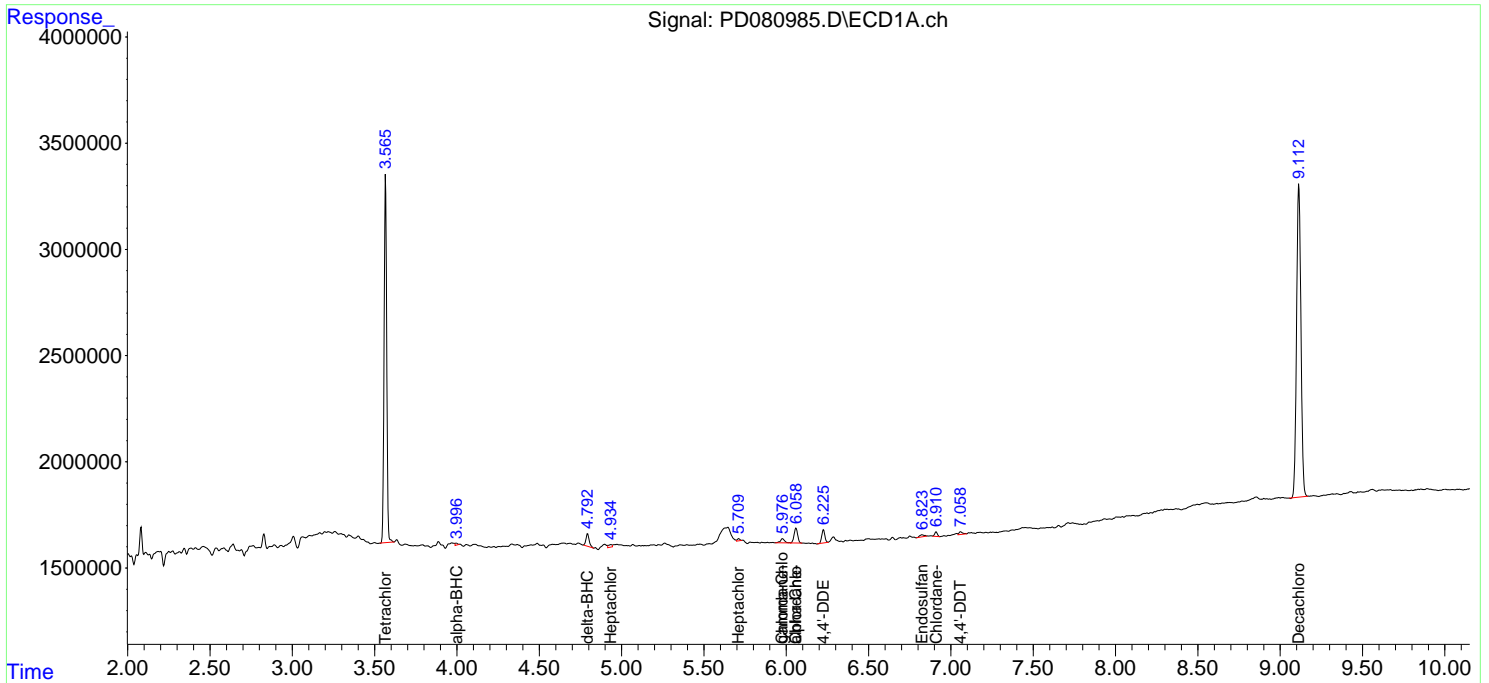
(f)=RT Delta > 1/2 Window (#)=Amounts differ by > 25% (m)=manual int.

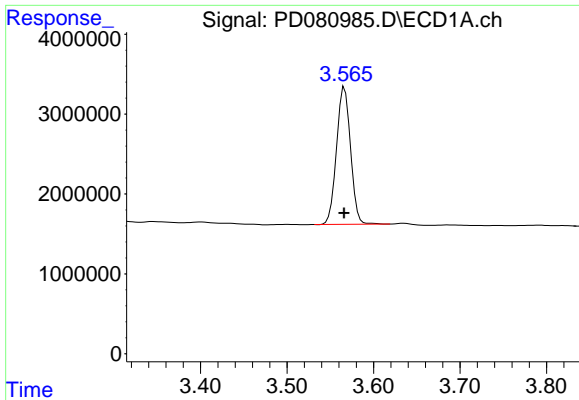
Data Path : Z:\pestpcbsrv\HPCHEM1\ECD_D\Data\PD013124\
 Data File : PD080985.D
 Signal(s) : Signal #1: ECD1A.ch Signal #2: ECD2B.ch
 Acq On : 31 Jan 2024 15:47
 Operator : AR\AJ
 Sample : P1296-01
 Misc :
 ALS Vial : 8 Sample Multiplier: 1

Instrument :
 ECD_D
 ClientSampleId :
 EO-01-013024

Integration File signal 1: autoint1.e
 Integration File signal 2: autoint2.e
 Quant Time: Jan 31 19:10:31 2024
 Quant Method : Z:\pestpcbsrv\HPCHEM1\ECD_D\Method\PD012424.M
 Quant Title : GC Extractables
 QLast Update : Thu Jan 25 11:14:56 2024
 Response via : Initial Calibration
 Integrator: ChemStation

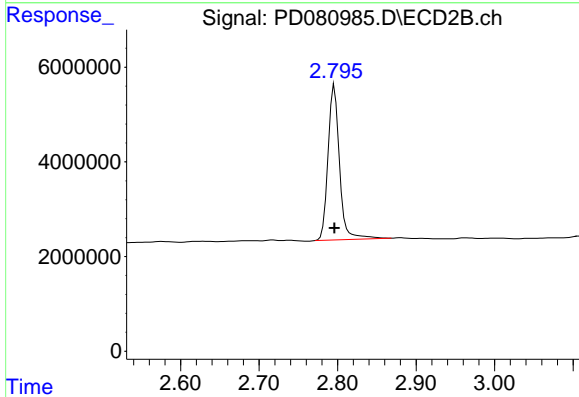
Volume Inj. : 1 µl
 Signal #1 Phase : ZB-MR1 Signal #2 Phase: ZB-MR2
 Signal #1 Info : 30M x 0.32mm x0.5 Signal #2 Info : 30M x 0.32mm x 0.25µm



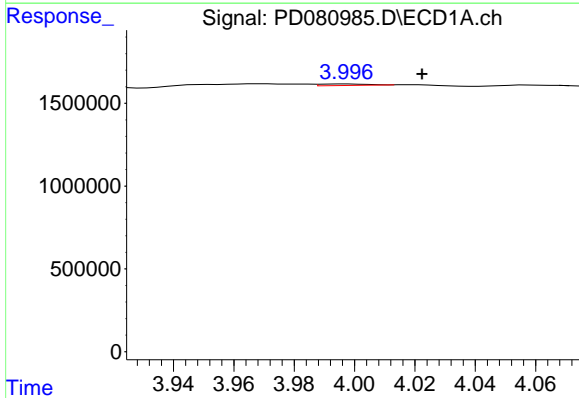


#1 Tetrachloro-m-xylene
 R.T.: 3.567 min
 Delta R.T.: 0.000 min
 Response: 19276473
 Conc: 13.58 ng/ml

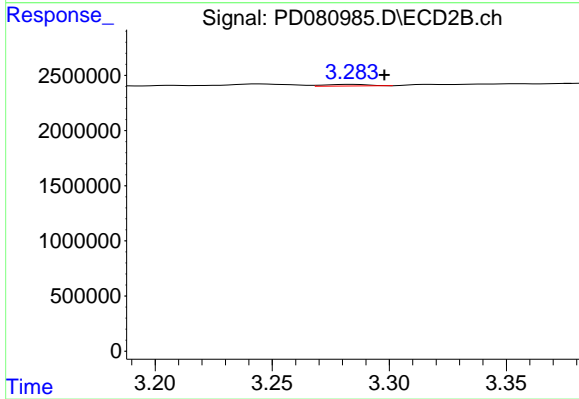
Instrument :
 ECD_D
 ClientSampleId :
 EO-01-013024



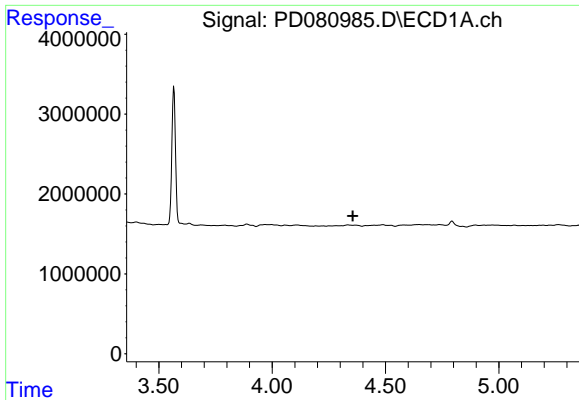
#1 Tetrachloro-m-xylene
 R.T.: 2.796 min
 Delta R.T.: 0.000 min
 Response: 33267593
 Conc: 13.91 ng/ml



#2 alpha-BHC
 R.T.: 3.997 min
 Delta R.T.: -0.025 min
 Response: 94281
 Conc: 0.04 ng/ml



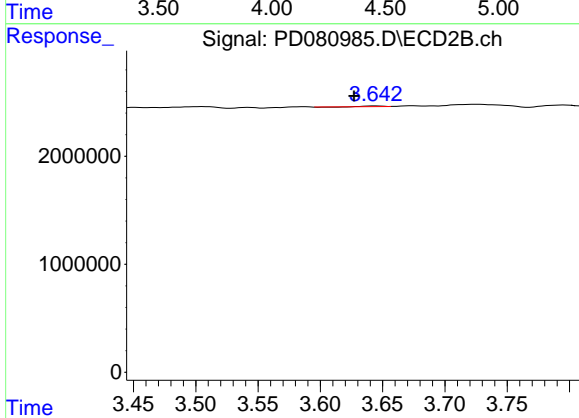
#2 alpha-BHC
 R.T.: 3.284 min
 Delta R.T.: -0.014 min
 Response: 198825
 Conc: 0.05 ng/ml



#3 gamma-BHC (Lindane)

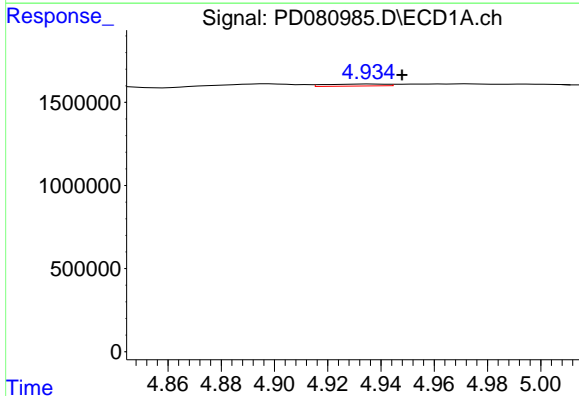
R.T.: 0.000 min
 Exp R.T.: 4.355 min
 Response: 0
 Conc: N.D.

Instrument :
 ECD_D
 ClientSampleId :
 EO-01-013024



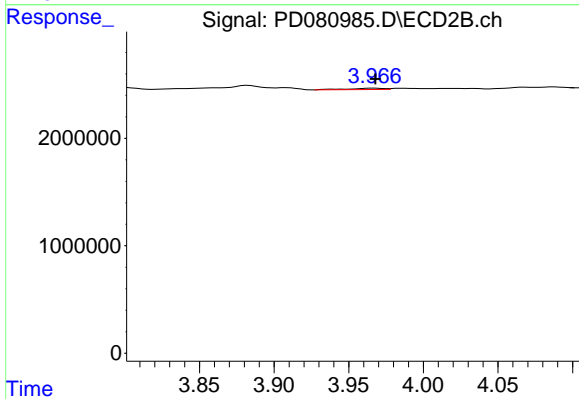
#3 gamma-BHC (Lindane)

R.T.: 3.644 min
 Delta R.T.: 0.017 min
 Response: 43518
 Conc: 0.01 ng/ml



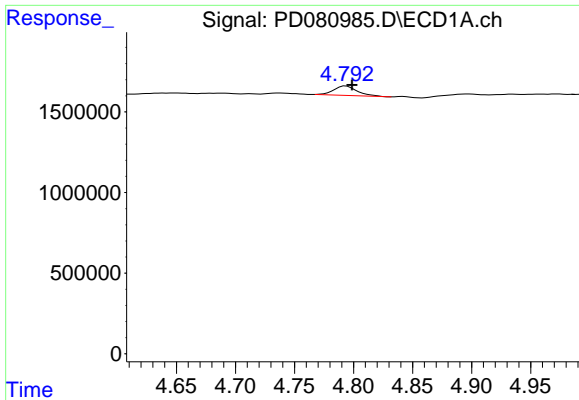
#4 Heptachlor

R.T.: 4.936 min
 Delta R.T.: -0.012 min
 Response: 185726
 Conc: 0.08 ng/ml



#4 Heptachlor

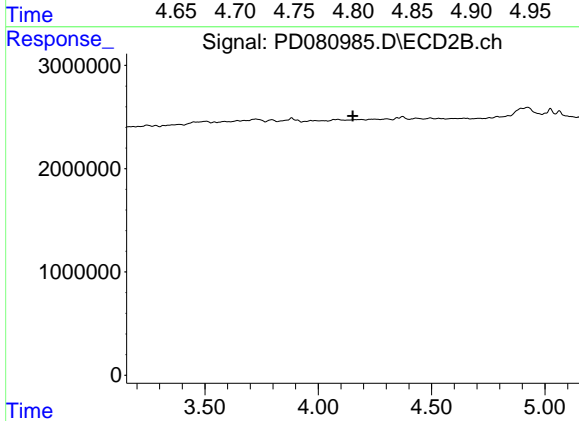
R.T.: 3.967 min
 Delta R.T.: -0.001 min
 Response: 215765
 Conc: 0.06 ng/ml



#7 delta-BHC

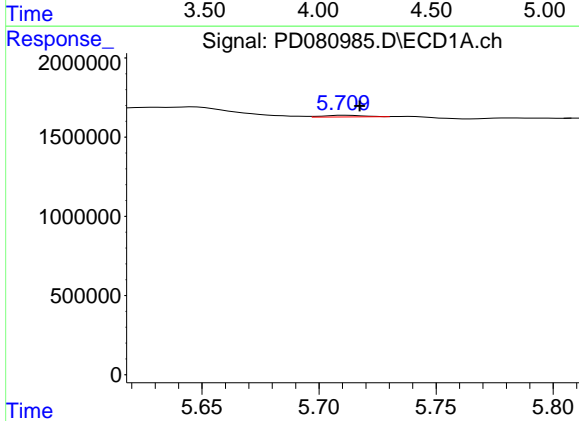
R.T.: 4.794 min
 Delta R.T.: -0.005 min
 Response: 826828
 Conc: 0.33 ng/ml

Instrument :
 ECD_D
 ClientSampleId :
 EO-01-013024



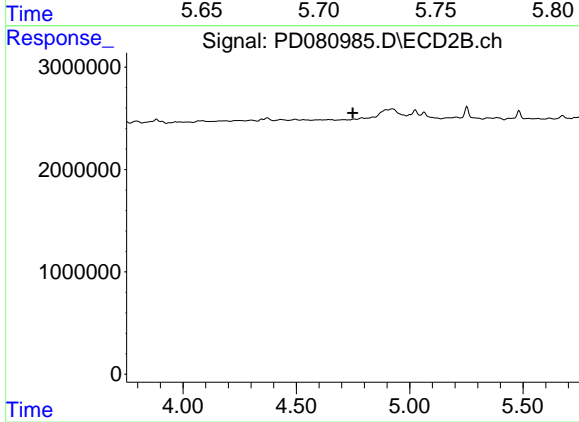
#7 delta-BHC

R.T.: 0.000 min
 Exp R.T. : 4.153 min
 Response: 0
 Conc: N.D.



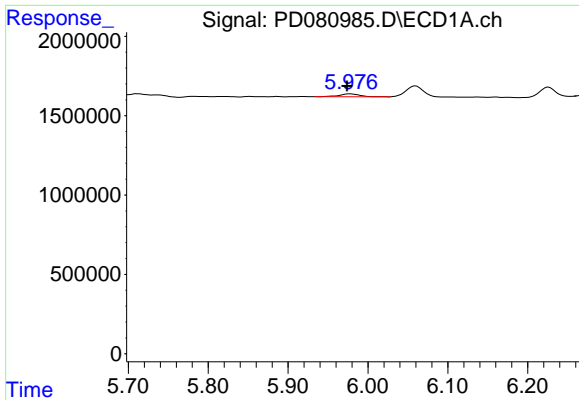
#8 Heptachlor epoxide

R.T.: 5.711 min
 Delta R.T.: -0.006 min
 Response: 115948
 Conc: 0.05 ng/ml



#8 Heptachlor epoxide

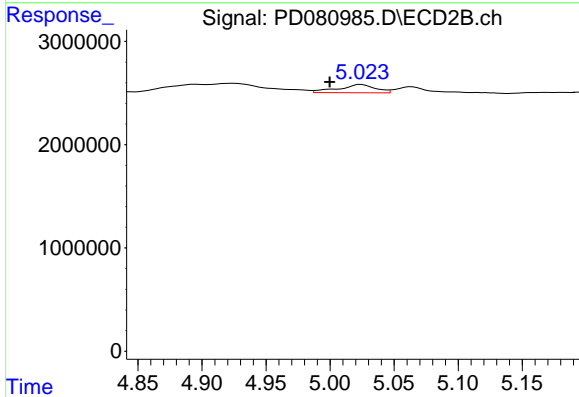
R.T.: 0.000 min
 Exp R.T. : 4.750 min
 Response: 0
 Conc: N.D.



#10 gamma-Chlordane

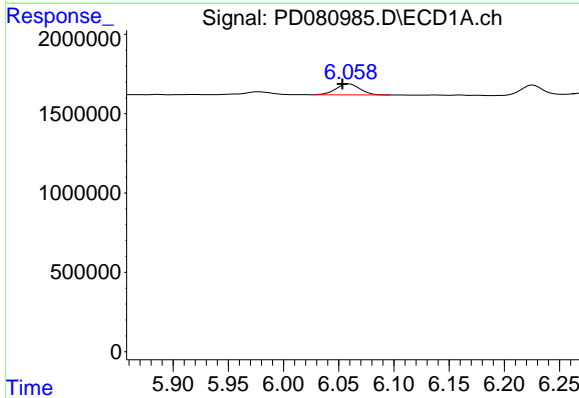
R.T.: 5.977 min
 Delta R.T.: 0.004 min
 Response: 345857
 Conc: 0.16 ng/ml

Instrument :
 ECD_D
 ClientSampleId :
 EO-01-013024



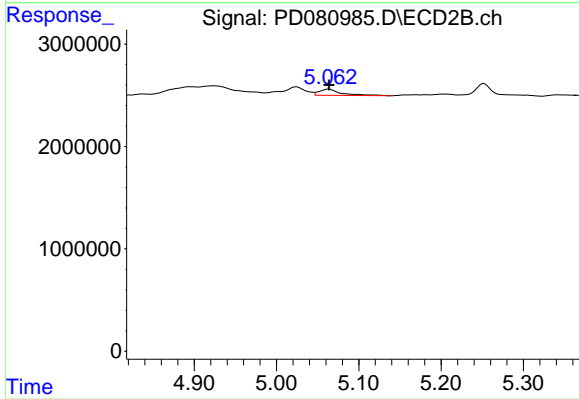
#10 gamma-Chlordane

R.T.: 5.024 min
 Delta R.T.: 0.025 min
 Response: 1610542
 Conc: 0.49 ng/ml



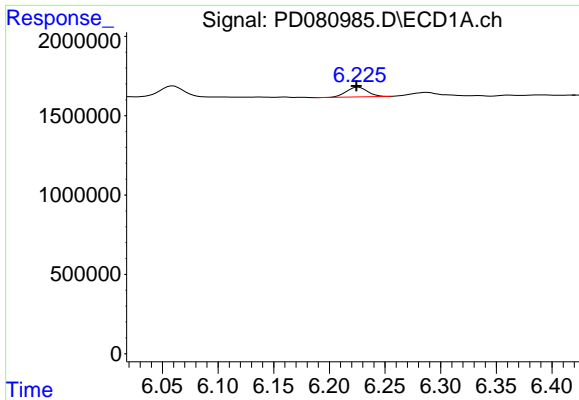
#11 alpha-Chlordane

R.T.: 6.060 min
 Delta R.T.: 0.007 min
 Response: 1054159
 Conc: 0.48 ng/ml



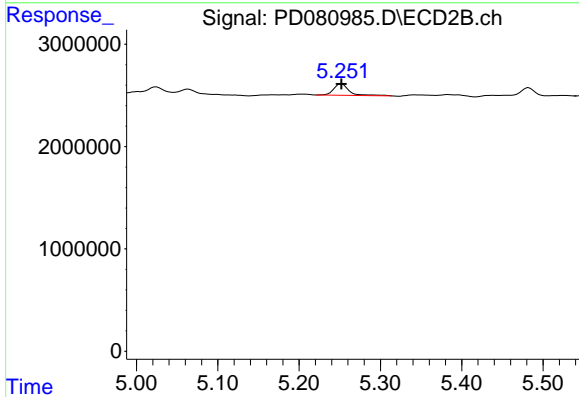
#11 alpha-Chlordane

R.T.: 5.064 min
 Delta R.T.: 0.000 min
 Response: 1157841
 Conc: 0.35 ng/ml

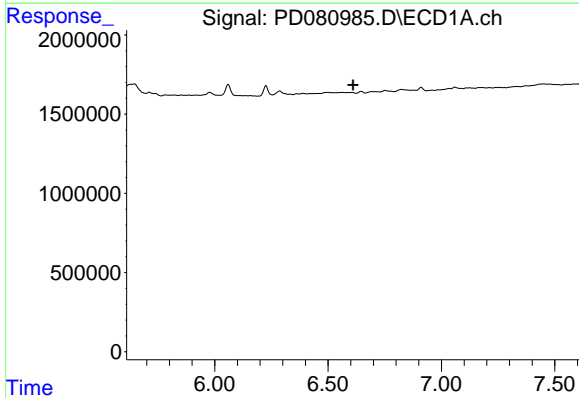


#12 4,4'-DDE
 R.T.: 6.226 min
 Delta R.T.: 0.002 min
 Response: 811881
 Conc: 0.40 ng/ml

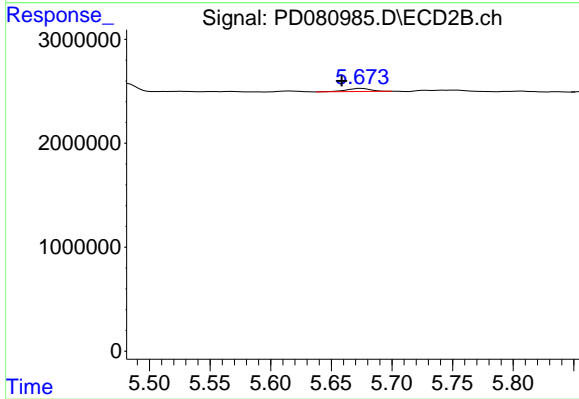
Instrument : ECD_D
 ClientSampleId : EO-01-013024



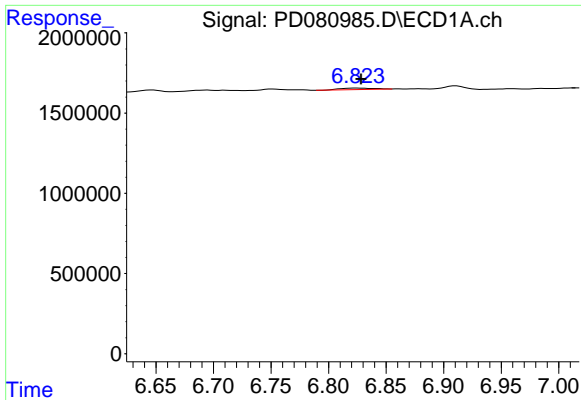
#12 4,4'-DDE
 R.T.: 5.252 min
 Delta R.T.: 0.000 min
 Response: 1474208
 Conc: 0.48 ng/ml



#14 Endrin
 R.T.: 0.000 min
 Exp R.T. : 6.610 min
 Response: 0
 Conc: N.D.



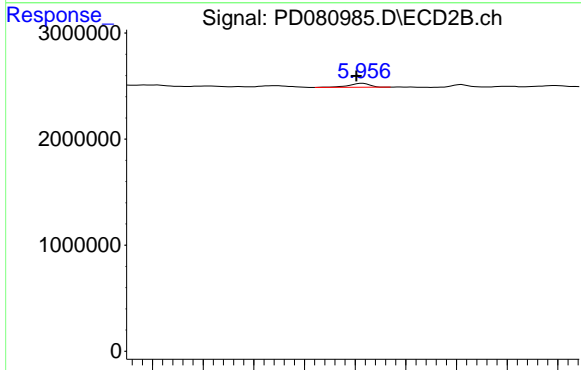
#14 Endrin
 R.T.: 5.675 min
 Delta R.T.: 0.016 min
 Response: 399155
 Conc: 0.13 ng/ml



#15 Endosulfan II

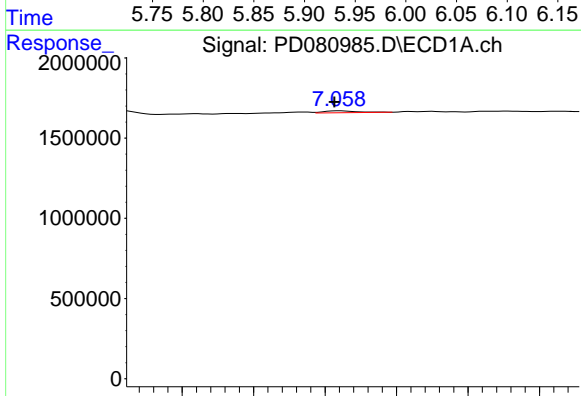
R.T.: 6.825 min
 Delta R.T.: -0.003 min
 Response: 181635
 Conc: 0.09 ng/ml

Instrument :
 ECD_D
 ClientSampleId :
 EO-01-013024



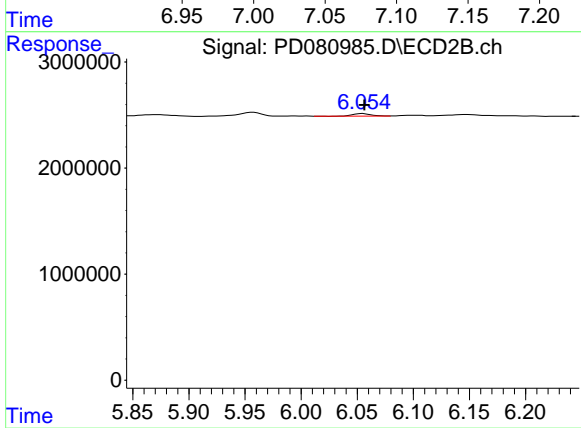
#15 Endosulfan II

R.T.: 5.957 min
 Delta R.T.: 0.006 min
 Response: 546222
 Conc: 0.19 ng/ml



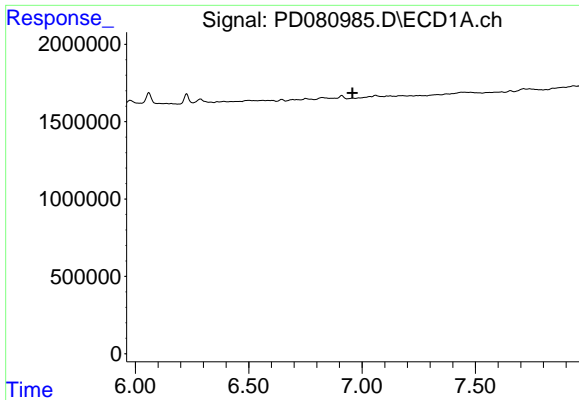
#17 4,4'-DDT

R.T.: 7.060 min
 Delta R.T.: 0.003 min
 Response: 192054
 Conc: 0.11 ng/ml



#17 4,4'-DDT

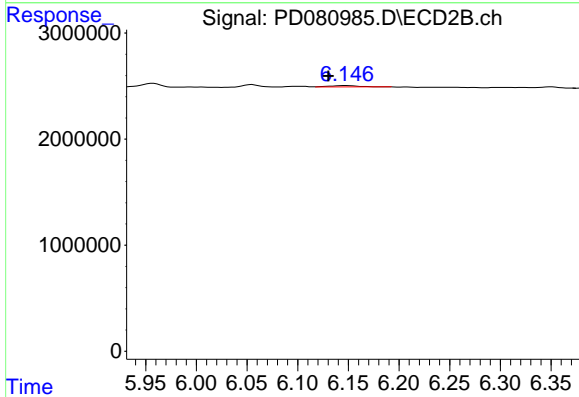
R.T.: 6.055 min
 Delta R.T.: -0.002 min
 Response: 253955
 Conc: 0.10 ng/ml



#18 Endrin aldehyde

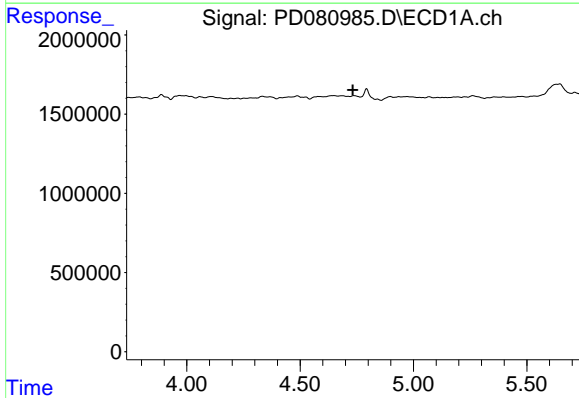
R.T.: 0.000 min
 Exp R.T.: 6.958 min
 Response: 0
 Conc: N.D.

Instrument :
 ECD_D
 ClientSampleId :
 EO-01-013024



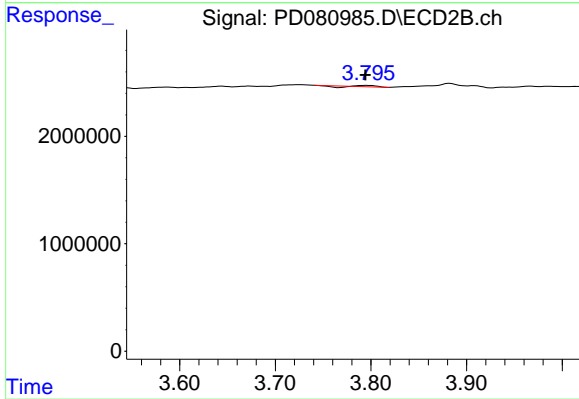
#18 Endrin aldehyde

R.T.: 6.147 min
 Delta R.T.: 0.017 min
 Response: 245913
 Conc: 0.11 ng/ml



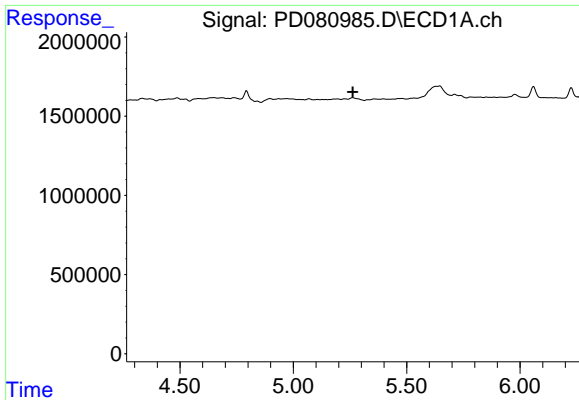
#23 Chlordane-1

R.T.: 0.000 min
 Exp R.T.: 4.733 min
 Response: 0
 Conc: N.D.



#23 Chlordane-1

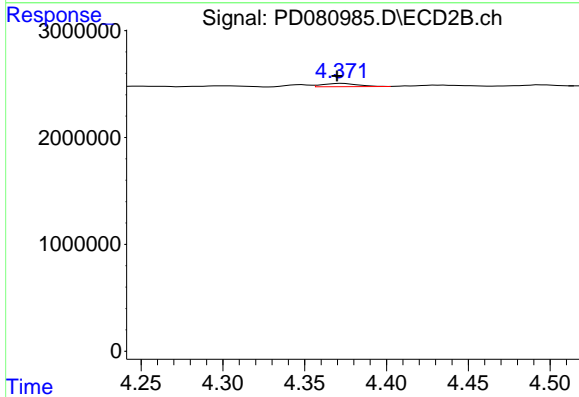
R.T.: 3.796 min
 Delta R.T.: 0.002 min
 Response: 44974
 Conc: 0.44 ng/ml



#24 Chlordane-2

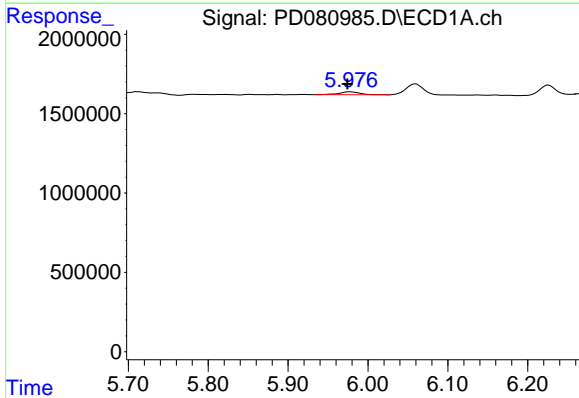
R.T.: 0.000 min
 Exp R.T.: 5.263 min
 Response: 0
 Conc: N.D.

Instrument :
 ECD_D
 ClientSampleId :
 EO-01-013024



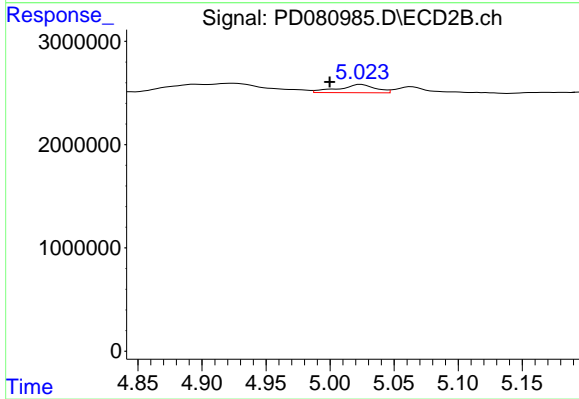
#24 Chlordane-2

R.T.: 4.373 min
 Delta R.T.: 0.003 min
 Response: 459123
 Conc: 3.75 ng/ml



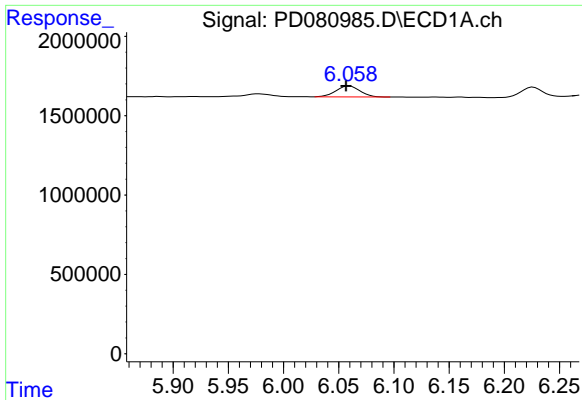
#25 Chlordane-3

R.T.: 5.977 min
 Delta R.T.: 0.003 min
 Response: 345857
 Conc: 1.10 ng/ml



#25 Chlordane-3

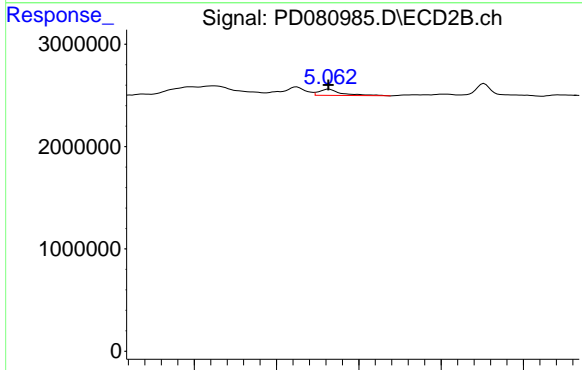
R.T.: 5.024 min
 Delta R.T.: 0.025 min
 Response: 1610542
 Conc: 4.80 ng/ml



#26 Chlordane-4

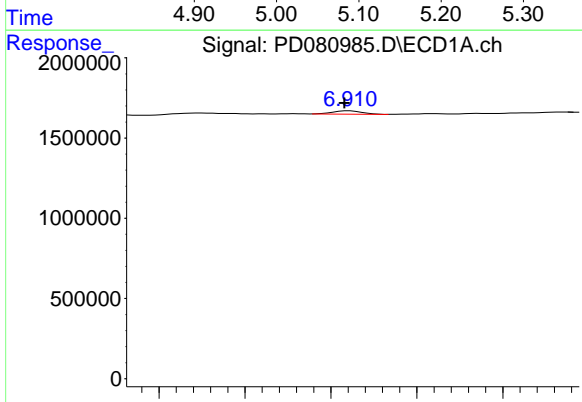
R.T.: 6.060 min
Delta R.T.: 0.003 min
Response: 1054159
Conc: 2.77 ng/ml

Instrument : ECD_D
ClientSampleId : EO-01-013024



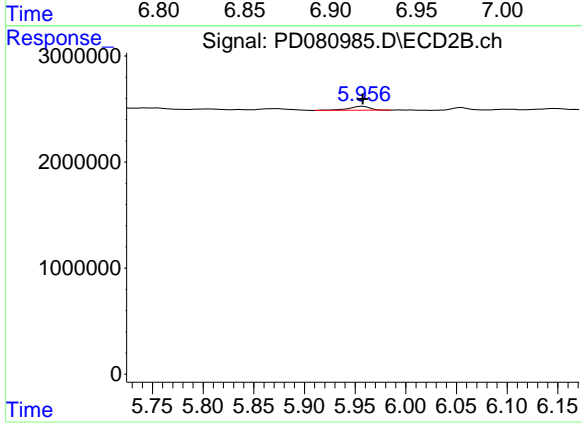
#26 Chlordane-4

R.T.: 5.064 min
Delta R.T.: 0.000 min
Response: 1157841
Conc: 3.64 ng/ml



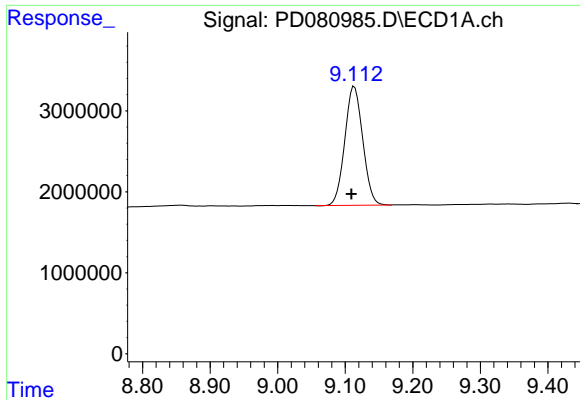
#27 Chlordane-5

R.T.: 6.911 min
Delta R.T.: 0.003 min
Response: 249269
Conc: 3.57 ng/ml



#27 Chlordane-5

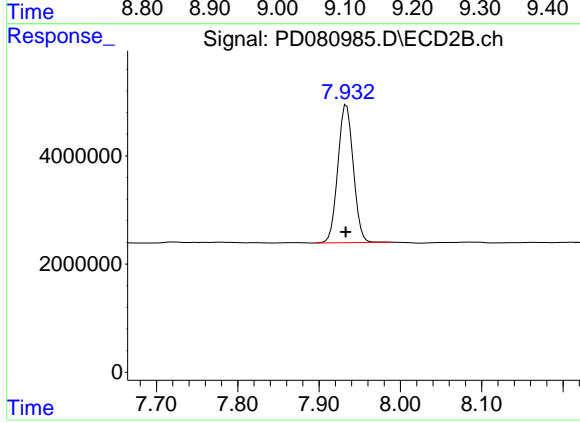
R.T.: 5.957 min
Delta R.T.: 0.000 min
Response: 546222
Conc: 4.51 ng/ml



#28 Decachlorobiphenyl

R.T.: 9.113 min
 Delta R.T.: 0.005 min
 Response: 27007501
 Conc: 13.42 ng/ml

Instrument :
 ECD_D
 ClientSampleId :
 EO-01-013024



#28 Decachlorobiphenyl

R.T.: 7.934 min
 Delta R.T.: 0.000 min
 Response: 33632408
 Conc: 12.63 ng/ml