

Data Path : Z:\pestpcbsrv\HPCHEM1\ECD\_D\Data\PD020323\  
 Data File : PD073820.D  
 Signal(s) : Signal #1: ECD1A.ch Signal #2: ECD2B.ch  
 Acq On : 03 Feb 2023 18:26  
 Operator : AR\AJ  
 Sample : PIBLK018  
 Misc :  
 ALS Vial : 2 Sample Multiplier: 1

Instrument :  
 ECD\_D  
 ClientSampleId :

Integration File signal 1: autoint1.e  
 Integration File signal 2: autoint2.e  
 Quant Time: Feb 04 00:00:59 2023  
 Quant Method : Z:\pestpcbsrv\HPCHEM1\ECD\_D\Method\PD012523CLP.M  
 Quant Title : GC Extractables  
 QLast Update : Wed Jan 25 02:23:06 2023  
 Response via : Initial Calibration  
 Integrator: ChemStation

Volume Inj. : 1 µl  
 Signal #1 Phase : ZB-MR1 Signal #2 Phase: ZB-MR2  
 Signal #1 Info : 30M x 0.32mm x0.5 Signal #2 Info : 30M x 0.32mm x 0.25µm

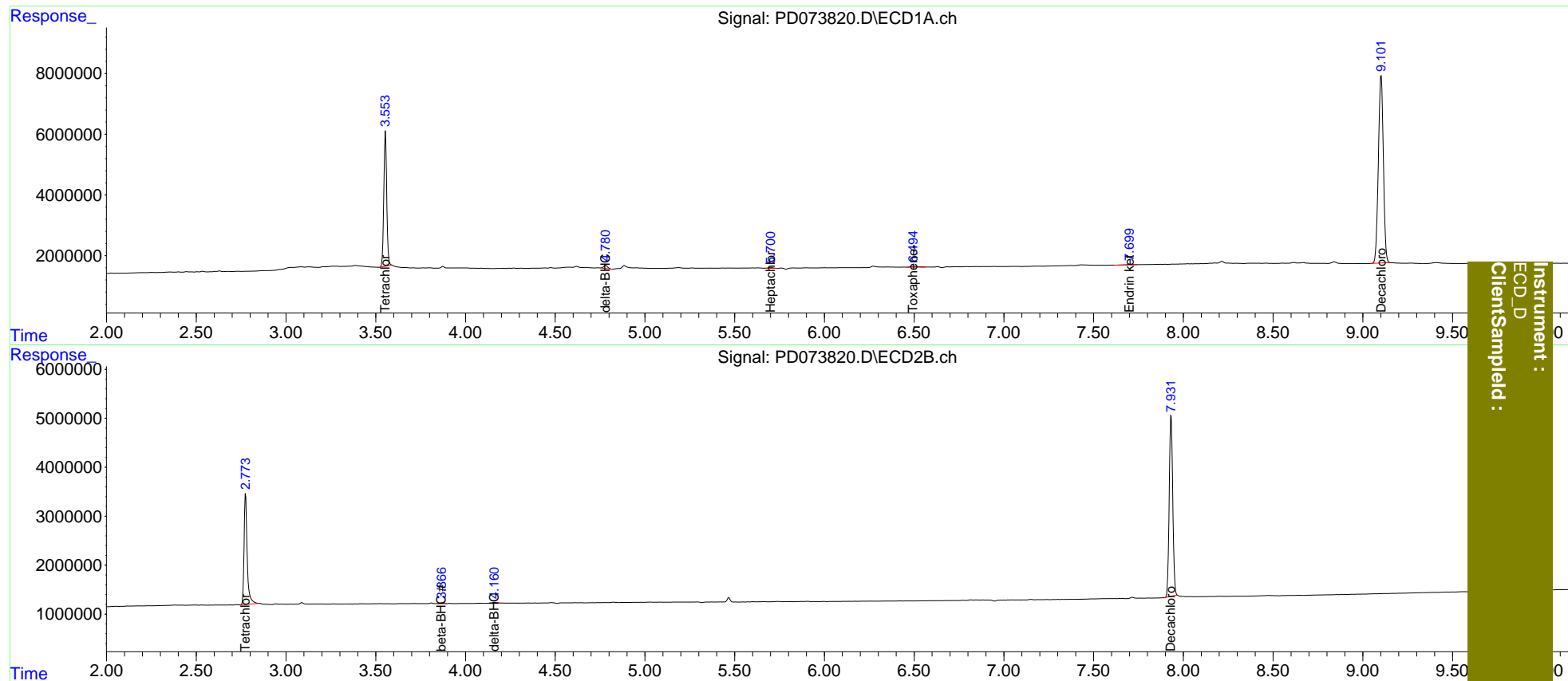
Compound	RT#1	RT#2	Resp#1	Resp#2	ng/ml	ng/ml
-----						
System Monitoring Compounds						
1) SA Tetrachlo...	3.554	2.775	50242626	27221819	21.216	21.445
27) SA Decachlor...	9.102	7.932	119.3E6	50598385	43.224	42.041
Target Compounds						
6) B beta-BHC	4.570f	3.868f	157424	177025	<MDL	0.217 #
7) B delta-BHC	4.781	4.162	1559465	264797	0.477	0.153 #
8) B Heptachlo...	5.702	0.000	531197	0	0.163	N.D. #
21) B Endrin ke...	7.701	0.000	428617	0	0.134	N.D. #
23) Toxaphene-2	6.496	0.000	918875	0	31.220	N.D. #
-----						

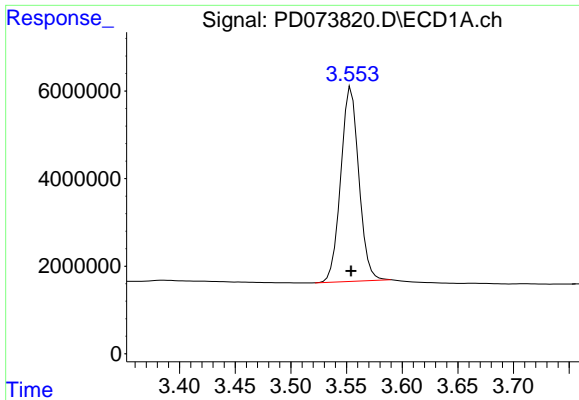
(f)=RT Delta > 1/2 Window (#)=Amounts differ by > 25% (m)=manual int.

Data Path : Z:\pestpcbsrv\HPCHEM1\ECD\_D\Data\PD020323\  
 Data File : PD073820.D  
 Signal(s) : Signal #1: ECD1A.ch Signal #2: ECD2B.ch  
 Acq On : 03 Feb 2023 18:26  
 Operator : AR\AJ  
 Sample : PIBLK018  
 Misc :  
 ALS Vial : 2 Sample Multiplier: 1

Integration File signal 1: autoint1.e  
 Integration File signal 2: autoint2.e  
 Quant Time: Feb 04 00:00:59 2023  
 Quant Method : Z:\pestpcbsrv\HPCHEM1\ECD\_D\Method\PD012523CLP.M  
 Quant Title : GC Extractables  
 QLast Update : Wed Jan 25 02:23:06 2023  
 Response via : Initial Calibration  
 Integrator: ChemStation

Volume Inj. : 1 µl  
 Signal #1 Phase : ZB-MR1 Signal #2 Phase: ZB-MR2  
 Signal #1 Info : 30M x 0.32mm x0.5 Signal #2 Info : 30M x 0.32mm x 0.25µm

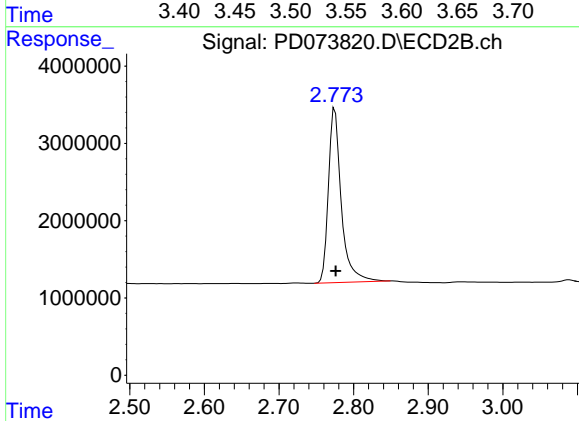




#1 Tetrachloro-m-xylene

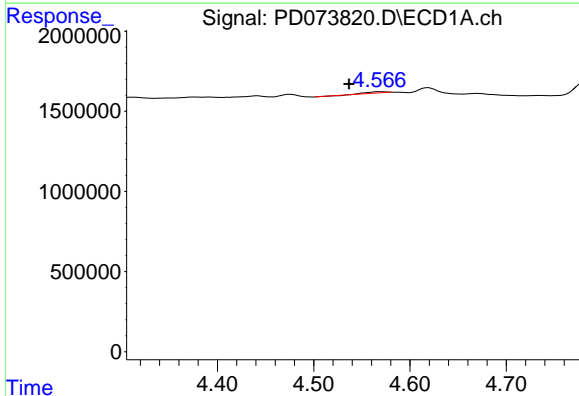
R.T.: 3.554 min  
 Delta R.T.: 0.000 min  
 Response: 50242626  
 Conc: 21.22 ng/ml

Instrument :  
 ECD\_D  
 ClientSampleId :



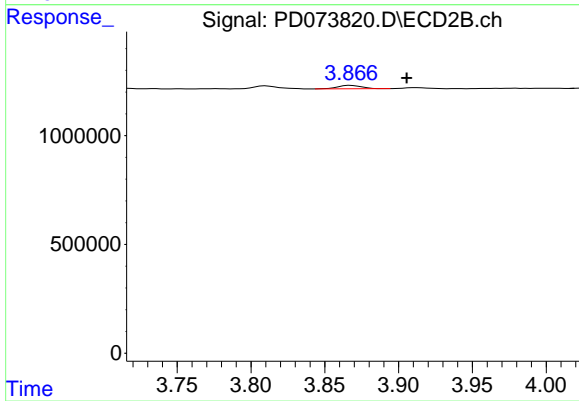
#1 Tetrachloro-m-xylene

R.T.: 2.775 min  
 Delta R.T.: 0.000 min  
 Response: 27221819  
 Conc: 21.45 ng/ml



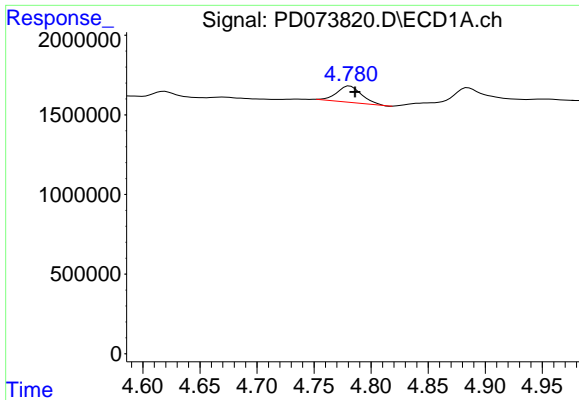
#6 beta-BHC

R.T.: 4.570 min  
 Delta R.T.: 0.033 min  
 Response: 157424  
 Conc: N.D.



#6 beta-BHC

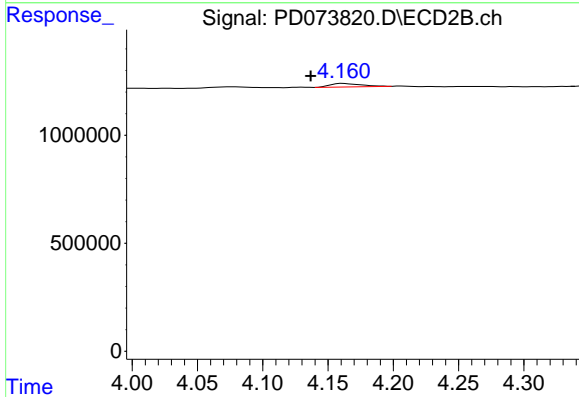
R.T.: 3.868 min  
 Delta R.T.: -0.038 min  
 Response: 177025  
 Conc: 0.22 ng/ml



#7 delta-BHC

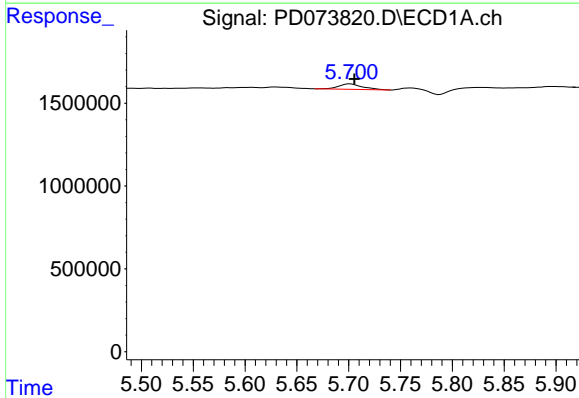
R.T.: 4.781 min  
 Delta R.T.: -0.004 min  
 Response: 1559465  
 Conc: 0.48 ng/ml

Instrument :  
 ECD\_D  
 ClientSampleId :



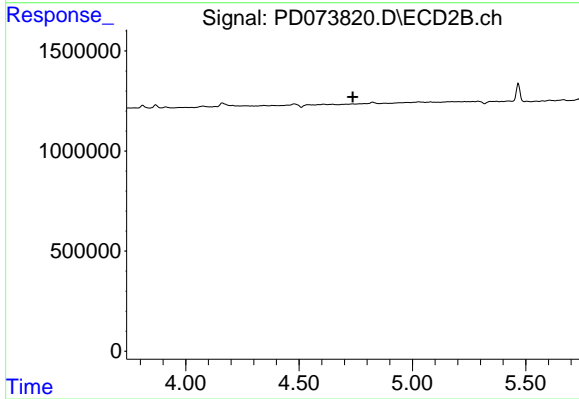
#7 delta-BHC

R.T.: 4.162 min  
 Delta R.T.: 0.025 min  
 Response: 264797  
 Conc: 0.15 ng/ml



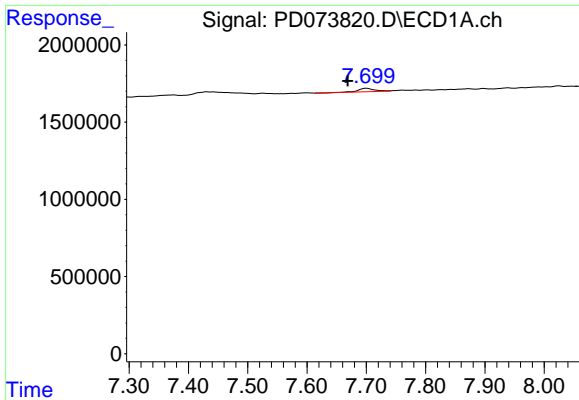
#8 Heptachlor epoxide

R.T.: 5.702 min  
 Delta R.T.: -0.004 min  
 Response: 531197  
 Conc: 0.16 ng/ml



#8 Heptachlor epoxide

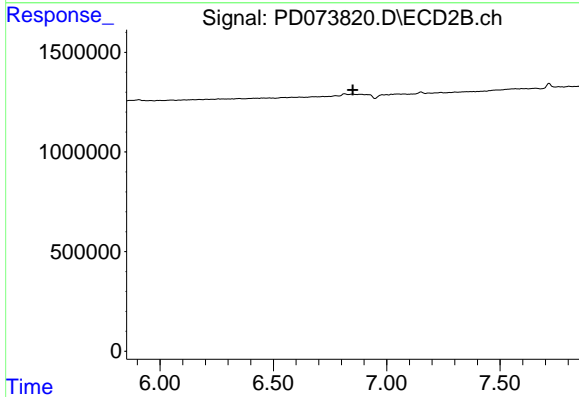
R.T.: 0.000 min  
 Exp R.T. : 4.737 min  
 Response: 0  
 Conc: N.D.



#21 Endrin ketone

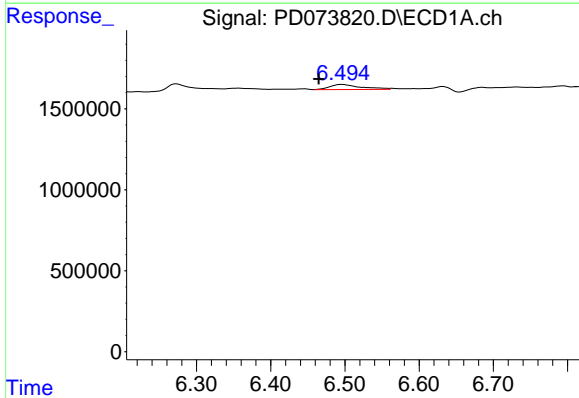
R.T.: 7.701 min  
 Delta R.T.: 0.032 min  
 Response: 428617  
 Conc: 0.13 ng/ml

Instrument :  
 ECD\_D  
 ClientSampleId :



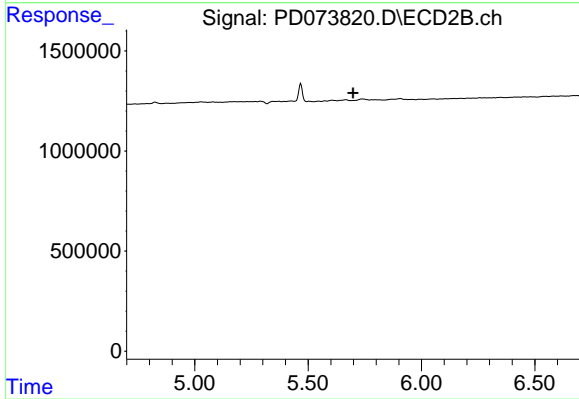
#21 Endrin ketone

R.T.: 0.000 min  
 Exp R.T. : 6.851 min  
 Response: 0  
 Conc: N.D.



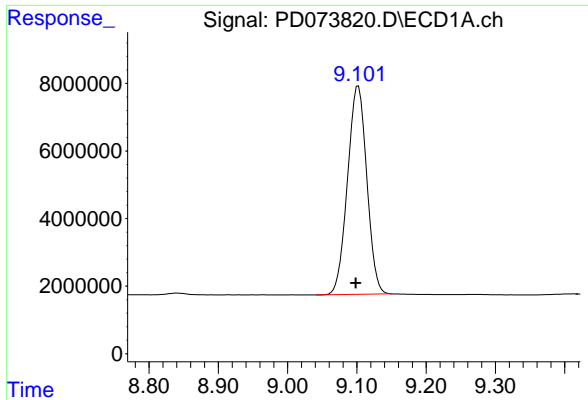
#23 Toxaphene-2

R.T.: 6.496 min  
 Delta R.T.: 0.031 min  
 Response: 918875  
 Conc: 31.22 ng/ml



#23 Toxaphene-2

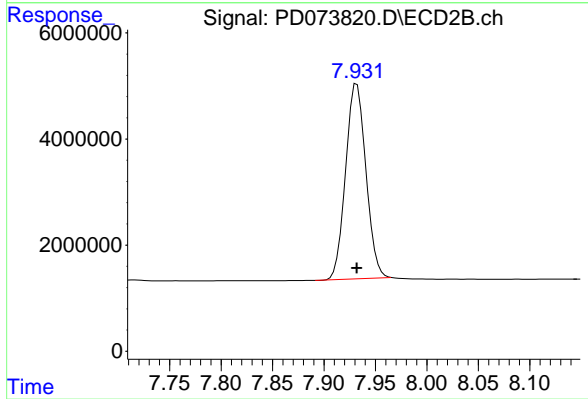
R.T.: 0.000 min  
 Exp R.T. : 5.698 min  
 Response: 0  
 Conc: N.D.



#27 Decachlorobiphenyl

R.T.: 9.102 min  
Delta R.T.: 0.004 min  
Response: 119252201  
Conc: 43.22 ng/ml

Instrument :  
ECD\_D  
ClientSampleId :



#27 Decachlorobiphenyl

R.T.: 7.932 min  
Delta R.T.: 0.000 min  
Response: 50598385  
Conc: 42.04 ng/ml