

Data Path : Z:\pestpcbsrv\HPCHEM1\ECD_D\Data\PD020323\
 Data File : PD073817.D
 Signal(s) : Signal #1: ECD1A.ch Signal #2: ECD2B.ch
 Acq On : 03 Feb 2023 13:45
 Operator : AR\AJ
 Sample : 01378-01
 Misc :
 ALS Vial : 9 Sample Multiplier: 1

Instrument :
 ECD_D
ClientSampleId :
 MDL-WATER-QT1-2023-01

Manual Integrations
APPROVED

Reviewed By :Abdul Mirza 02/07/2023
 Supervised By :Ankita Jodhani 02/07/2023

Integration File signal 1: autoint1.e
 Integration File signal 2: autoint2.e
 Quant Time: Feb 03 23:57:22 2023
 Quant Method : Z:\pestpcbsrv\HPCHEM1\ECD_D\Method\PD012523CLP.M
 Quant Title : GC Extractables
 QLast Update : Wed Jan 25 02:23:06 2023
 Response via : Initial Calibration
 Integrator: ChemStation

Volume Inj. : 1 µl
 Signal #1 Phase : ZB-MR2 Signal #2 Phase: ZB-MR2
 Signal #1 Info : 30M x 0.32mm x0.5 Signal #2 Info : 30M x 0.32mm x 0.25µm

Compound	RT#1	RT#2	Resp#1	Resp#2	ng/ml	ng/ml

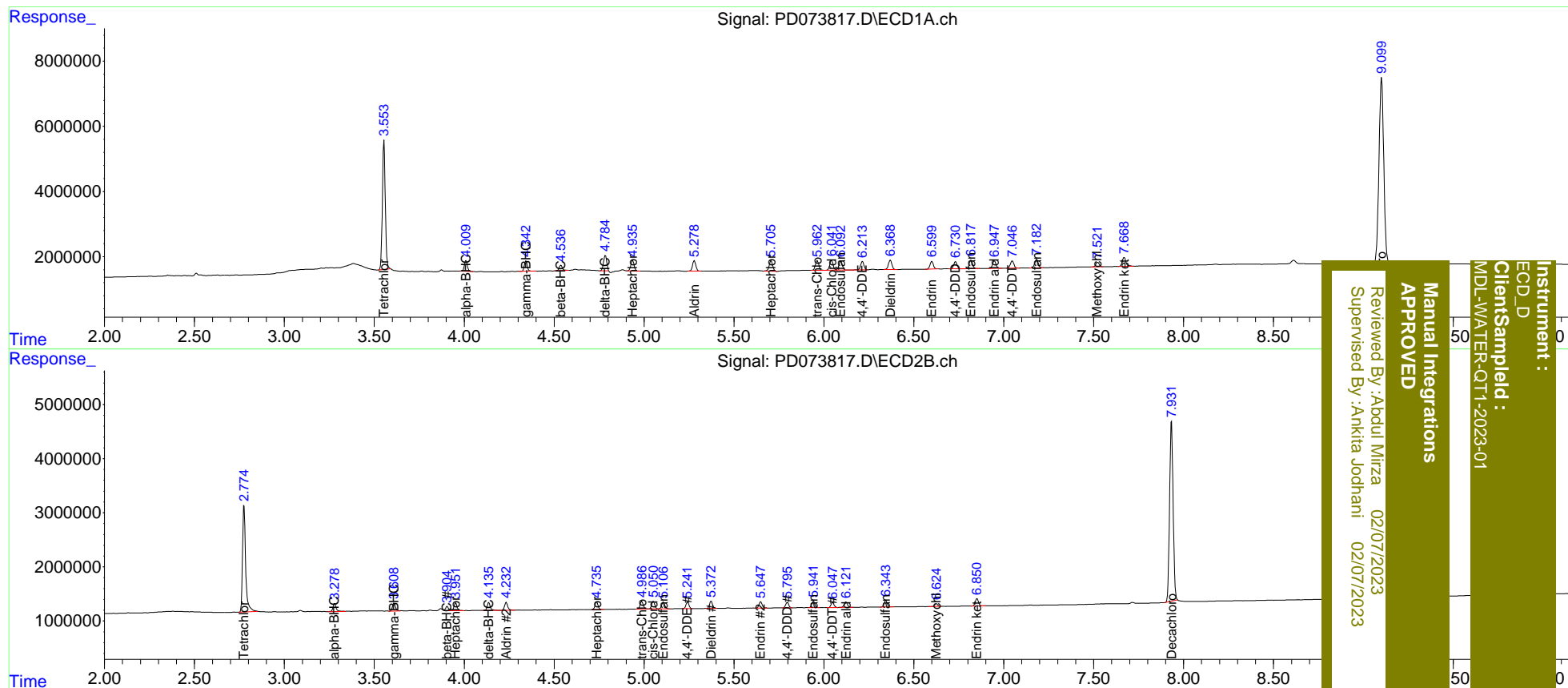
System Monitoring Compounds						
1) SA Tetrachlo...	3.554	2.776	44704997	23948940	18.878	18.867
2) SA Decachlor...	9.101	7.933	105.8E6	45329991	38.343	37.664
Target Compounds						
2) A alpha-BHC	4.010	3.279	3768821	1753463	0.989	0.989
3) MA gamma-BHC...	4.343	3.610	3618664	1613890	0.994	0.960
4) MA Heptachlor	4.937	3.952	4133627	1626006	1.136	1.078
5) MB Aldrin	5.280	4.234	4124829	1762556	1.153	1.038
6) B beta-BHC	4.538	3.905	2010341	849327	1.197	1.039
7) B delta-BHC	4.784	4.136	5905536	1754723	1.807m	1.012 #
8) B Heptachlo...	5.706	4.737	4429029	1653930	1.362	1.062
9) A Endosulfan I	6.093	5.107	3708947	1529768	1.209	1.066
10) B trans-Chl...	5.963	4.988	3926336	1691658	1.220	1.083
11) B cis-Chlor...	6.043	5.052	3978982	1701989	1.194	1.059
12) B 4,4'-DDE	6.215	5.242	3258582	1411587	1.034	0.961
13) MA Dieldrin	6.369	5.373	3887390	1566308	1.157	1.006
14) MA Endrin	6.600	5.649	3060633	1377279	1.094	1.070
15) B Endosulfa...	6.818	5.942	3564621	1474510	1.206	1.072
16) A 4,4'-DDD	6.732	5.797	2827158	1204103	1.111	0.998
17) MA 4,4'-DDT	7.048	6.049	3055057	1087808	1.119	0.921
18) B Endrin al...	6.948	6.123	3145518	1279497	1.315	1.172
19) B Endosulfa...	7.183	6.345	3550394	1438448	1.278	1.144
20) A Methoxychlor	7.523	6.625	1866364	660430	1.254	1.197
21) B Endrin ke...	7.670	6.851	3978898	1700282	1.248	1.130

(f)=RT Delta > 1/2 Window (#)=Amounts differ by > 25% (m)=manual int.

Data Path : Z:\pestpcbsrv\HPCHEM1\ECD_D\Data\PD073817\
 Data File : PD073817.D
 Signal(s) : Signal #1: ECD1A.ch Signal #2: ECD2B.ch
 Acq On : 03 Feb 2023 13:45
 Operator : AR\AJ
 Sample : 01378-01
 Misc :
 ALS Vial : 9 Sample Multiplier: 1

Integration File signal 1: autoint1.e
 Integration File signal 2: autoint2.e
 Quant Time: Feb 03 23:57:22 2023
 Quant Method : Z:\pestpcbsrv\HPCHEM1\ECD_D\Method\PD012523CLP.M
 Quant Title : GC Extractables
 QLast Update : Wed Jan 25 02:23:06 2023
 Response via : Initial Calibration
 Integrator: ChemStation

Volume Inj. : 1 µl
 Signal #1 Phase : ZB-MR1 Signal #2 Phase: ZB-MR2
 Signal #1 Info : 30M x 0.32mm x0.5 Signal #2 Info : 30M x 0.32mm x 0.25µm



Instrument : ECD_D
 Client Sampled : MDL-WATER-QT1-2023-01
 Manual Integrations APPROVED
 Reviewed By: Aboul Mirza 02/07/2023
 Supervised By: Ankita Jodhani 02/07/2023