

Data Path : Z:\pestpcbsrv\HPCHEM1\ECD\_D\Data\PD020425\  
 Data File : PD087717.D  
 Signal(s) : Signal #1: ECD1A.ch Signal #2: ECD2B.ch  
 Acq On : 04 Feb 2025 17:44  
 Operator : AR\AJ  
 Sample : Q1202-14  
 Misc :  
 ALS Vial : 21 Sample Multiplier: 1

Instrument :  
 ECD\_D  
 ClientSampleId :

Integration File signal 1: autoint1.e  
 Integration File signal 2: autoint2.e  
 Quant Time: Feb 05 08:07:13 2025  
 Quant Method : Z:\pestpcbsrv\HPCHEM1\ECD\_D\Method\PD011625CLP.M  
 Quant Title : GC Extractables  
 QLast Update : Thu Jan 16 13:39:07 2025  
 Response via : Initial Calibration  
 Integrator: ChemStation

Volume Inj. : 1 µl  
 Signal #1 Phase : ZB-MR2 Signal #2 Phase: ZB-MR2  
 Signal #1 Info : 30M x 0.32mm x0.5 Signal #2 Info : 30M x 0.32mm x 0.25µm

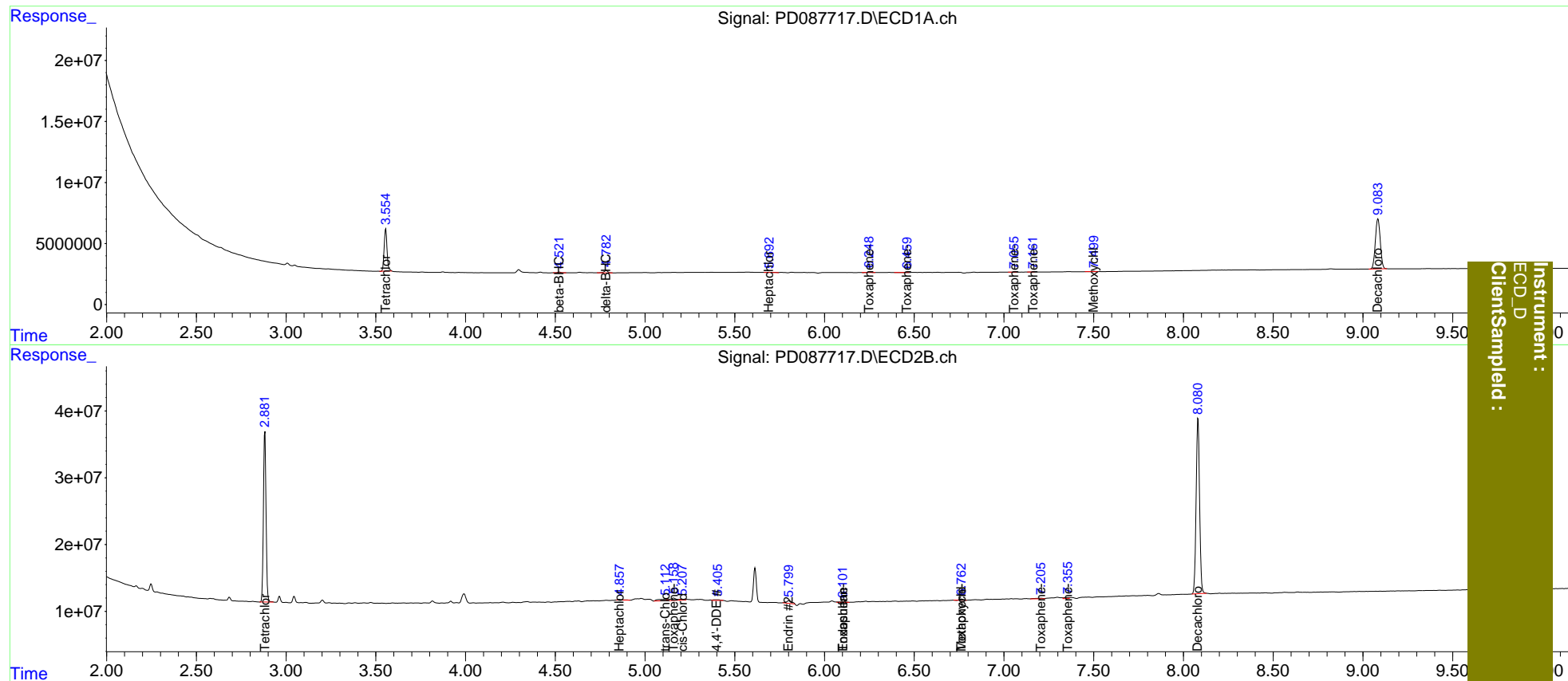
Compound	RT#1	RT#2	Resp#1	Resp#2	ng/ml	ng/ml
-----						
System Monitoring Compounds						
1) SA Tetrachlo...	3.555	2.882	39113204	260.3E6	19.192	21.047
27) SA Decachlor...	9.084	8.082	78034125	352.4E6	23.340	24.329
Target Compounds						
2) A alpha-BHC	0.000	3.385	0	723420	N.D.	<MDL
4) MA Heptachlor	4.921	4.121f	26822	209575	<MDL	<MDL #
5) MB Aldrin	5.259	4.389	83495	394844	<MDL	<MDL #
6) B beta-BHC	4.523	4.044	836569	371008	0.466	<MDL #
7) B delta-BHC	4.784	4.265	2756866	638806	0.667	<MDL #
8) B Heptachlo...	5.691	4.858	409303	1890508	0.110	0.112
9) A Endosulfan I	6.096	5.236	94722	1277630	<MDL	<MDL #
10) B trans-Chl...	5.935	5.114	331079	7626406	<MDL	0.424 #
11) B cis-Chlor...	6.096f	5.207	94722	2300652	<MDL	0.133 #
12) B 4,4'-DDE	6.193	5.400	-22270	2527175	N.D.	0.154
13) MA Dieldrin	6.362	0.000	91271	0	<MDL	N.D. #
14) MA Endrin	6.580	5.801	39254	7523196	<MDL	0.503 #
16) A 4,4'-DDD	6.711	5.927	84219	632494	<MDL	<MDL #
17) MA 4,4'-DDT	7.012	6.192	51390	766834	<MDL	<MDL #
18) B Endrin al...	6.876f	6.267	118495	895339	<MDL	<MDL #
19) B Endosulfa...	7.160	6.490	34800	554735	<MDL	<MDL #
20) A Methoxychlor	7.501	6.763	464996	2353269	0.293	0.382 #
21) B Endrin ke...	7.607	6.994	136564	173861	<MDL	<MDL #
22) Toxaphene-1	6.249	5.160	656291	8936654	28.724	102.959 #
23) Toxaphene-2	6.461	6.103	10450	1839561	0.325	19.654 #
24) Toxaphene-3	7.056	6.763	61882	2353269	0.697	7.906 #
25) Toxaphene-4	7.160	7.206	34800	3125489	0.533	14.754 #
26) Toxaphene-5	0.000	7.357	0	3077438	N.D.	19.845
-----						

(f)=RT Delta > 1/2 Window (#)=Amounts differ by > 25% (m)=manual int.

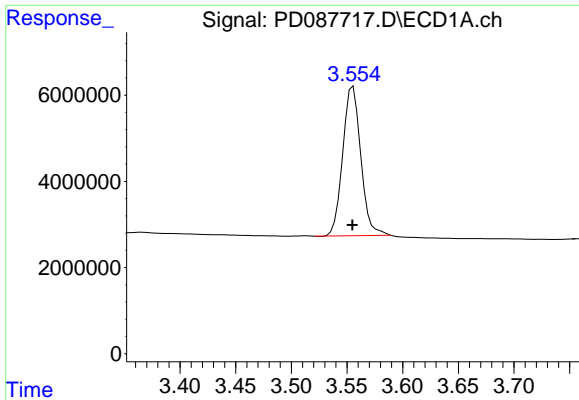
Data Path : Z:\pestpcbsrv\HPCHEM1\ECD\_D\Data\PD020425\  
 Data File : PD087717.D  
 Signal(s) : Signal #1: ECD1A.ch Signal #2: ECD2B.ch  
 Acq On : 04 Feb 2025 17:44  
 Operator : AR\AJ  
 Sample : Q1202-14  
 Misc :  
 ALS Vial : 21 Sample Multiplier: 1

Integration File signal 1: autoint1.e  
 Integration File signal 2: autoint2.e  
 Quant Time: Feb 05 08:07:13 2025  
 Quant Method : Z:\pestpcbsrv\HPCHEM1\ECD\_D\Method\PD011625CLP.M  
 Quant Title : GC Extractables  
 QLast Update : Thu Jan 16 13:39:07 2025  
 Response via : Initial Calibration  
 Integrator: ChemStation

Volume Inj. : 1 µl  
 Signal #1 Phase : ZB-MR1 Signal #2 Phase: ZB-MR2  
 Signal #1 Info : 30M x 0.32mm x0.5 Signal #2 Info : 30M x 0.32mm x 0.25µm



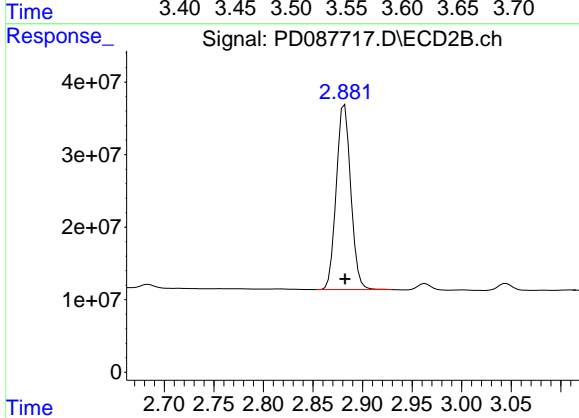
Instrument : ECD\_D  
 ClientSampled :



#1 Tetrachloro-m-xylene

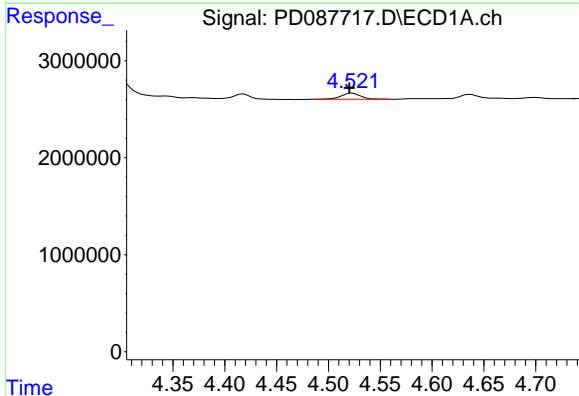
R.T.: 3.555 min  
 Delta R.T.: 0.000 min  
 Response: 39113204  
 Conc: 19.19 ng/ml

Instrument :  
 ECD\_D  
 ClientSampleId :



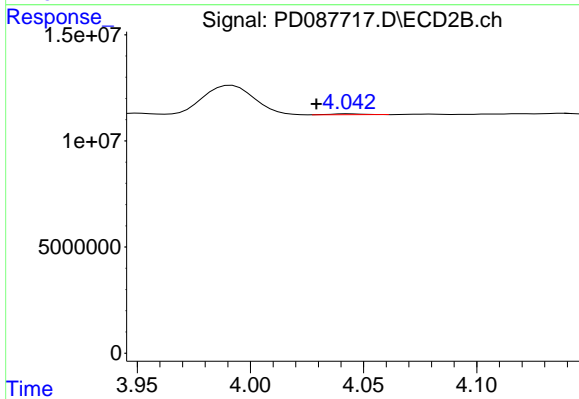
#1 Tetrachloro-m-xylene

R.T.: 2.882 min  
 Delta R.T.: 0.000 min  
 Response: 260303757  
 Conc: 21.05 ng/ml



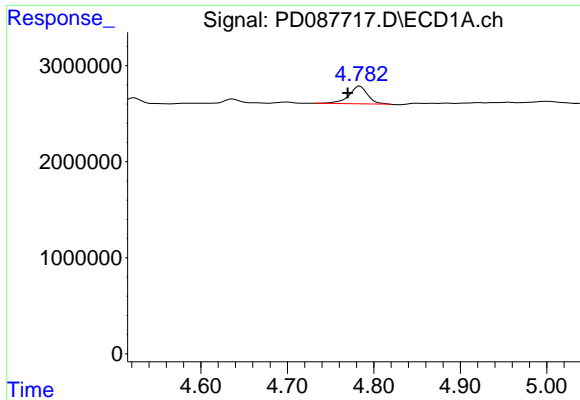
#6 beta-BHC

R.T.: 4.523 min  
 Delta R.T.: 0.002 min  
 Response: 836569  
 Conc: 0.47 ng/ml



#6 beta-BHC

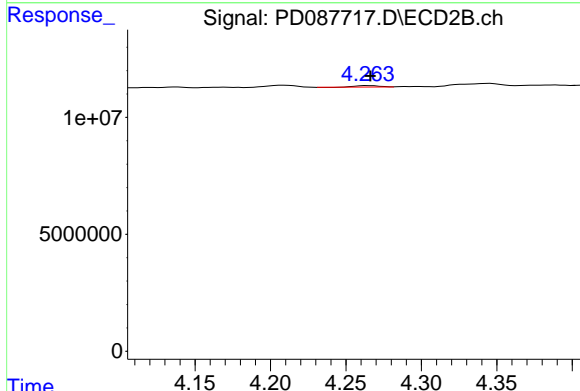
R.T.: 4.044 min  
 Delta R.T.: 0.015 min  
 Response: 371008  
 Conc: N.D.



#7 delta-BHC

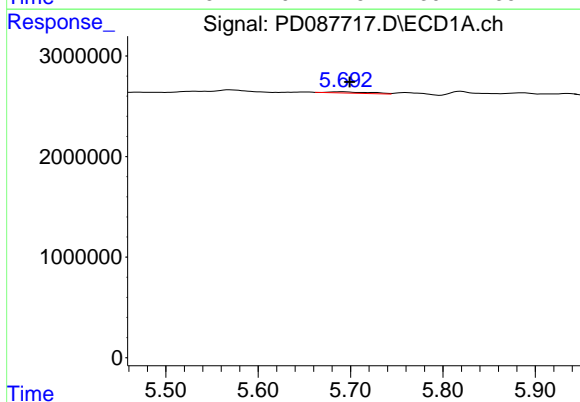
R.T.: 4.784 min  
 Delta R.T.: 0.014 min  
 Response: 2756866  
 Conc: 0.67 ng/ml

Instrument :  
 ECD\_D  
 ClientSampleId :



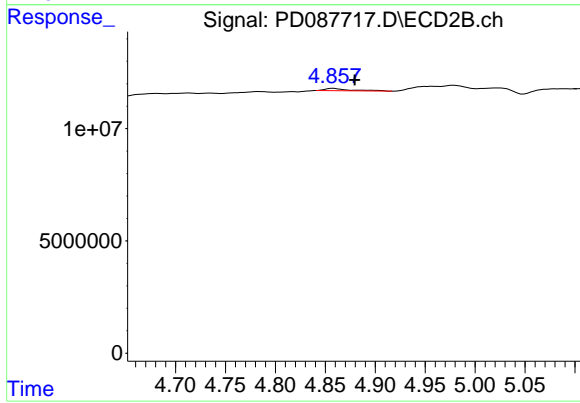
#7 delta-BHC

R.T.: 4.265 min  
 Delta R.T.: -0.002 min  
 Response: 638806  
 Conc: N.D.



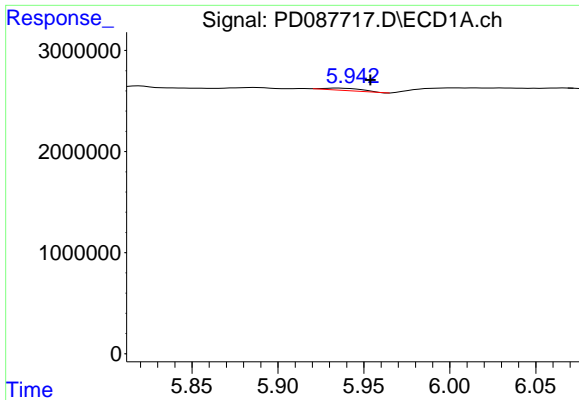
#8 Heptachlor epoxide

R.T.: 5.691 min  
 Delta R.T.: -0.008 min  
 Response: 409303  
 Conc: 0.11 ng/ml



#8 Heptachlor epoxide

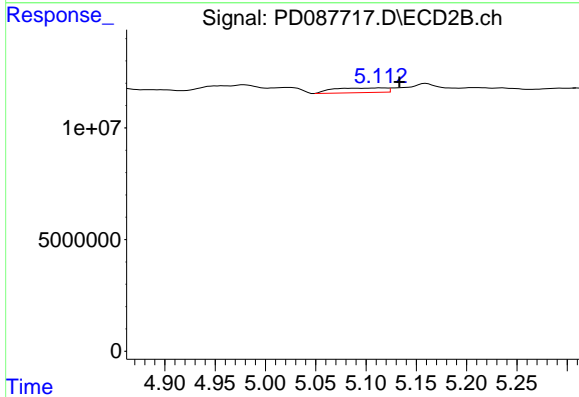
R.T.: 4.858 min  
 Delta R.T.: -0.021 min  
 Response: 1890508  
 Conc: 0.11 ng/ml



#10 trans-Chlordane

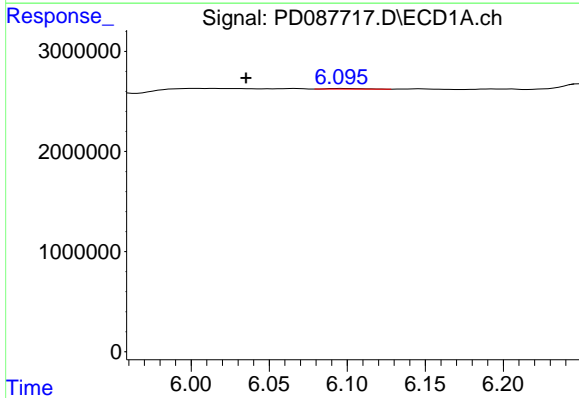
R.T.: 5.935 min  
 Delta R.T.: -0.018 min  
 Response: 331079  
 Conc: N.D.

Instrument :  
 ECD\_D  
 ClientSampleId :



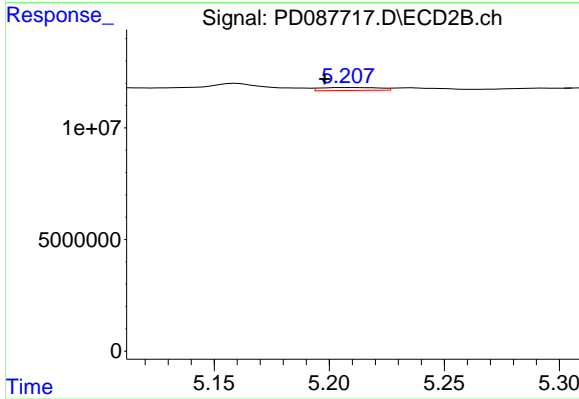
#10 trans-Chlordane

R.T.: 5.114 min  
 Delta R.T.: -0.019 min  
 Response: 7626406  
 Conc: 0.42 ng/ml



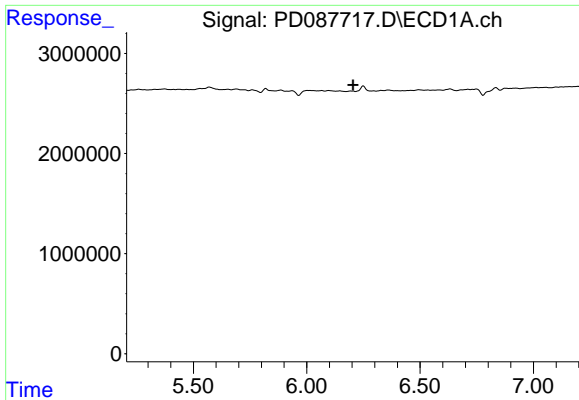
#11 cis-Chlordane

R.T.: 6.096 min  
 Delta R.T.: 0.061 min  
 Response: 94722  
 Conc: N.D.



#11 cis-Chlordane

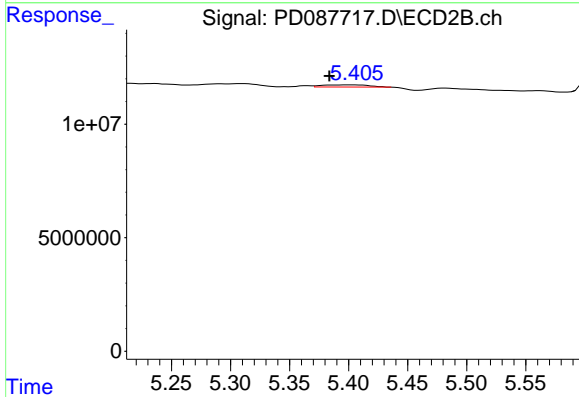
R.T.: 5.207 min  
 Delta R.T.: 0.009 min  
 Response: 2300652  
 Conc: 0.13 ng/ml



#12 4,4'-DDE

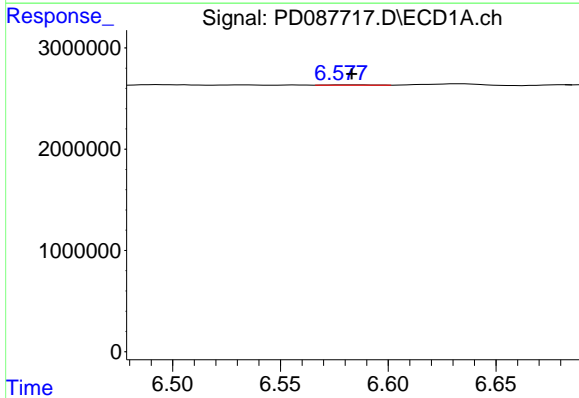
R.T.: 6.193 min  
 Delta R.T.: -0.011 min  
 Response: -22270  
 Conc: N.D.

Instrument :  
 ECD\_D  
 ClientSampleId :



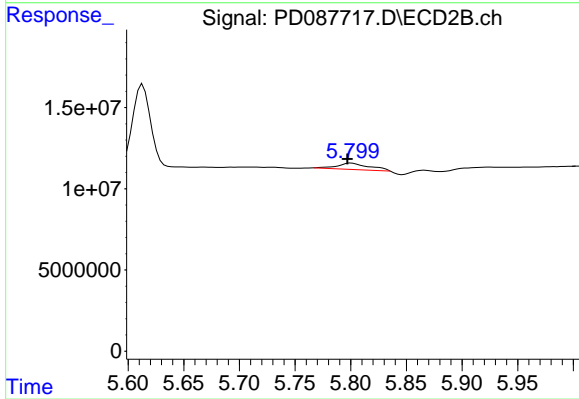
#12 4,4'-DDE

R.T.: 5.400 min  
 Delta R.T.: 0.016 min  
 Response: 2527175  
 Conc: 0.15 ng/ml



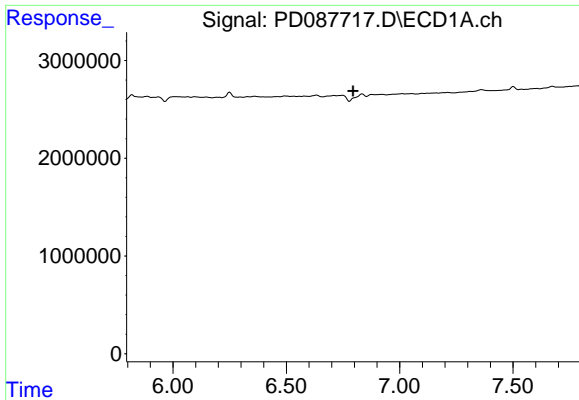
#14 Endrin

R.T.: 6.580 min  
 Delta R.T.: -0.003 min  
 Response: 39254  
 Conc: N.D.



#14 Endrin

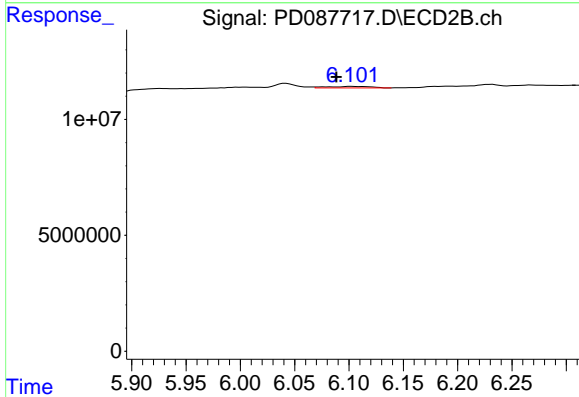
R.T.: 5.801 min  
 Delta R.T.: 0.004 min  
 Response: 7523196  
 Conc: 0.50 ng/ml



#15 Endosulfan II

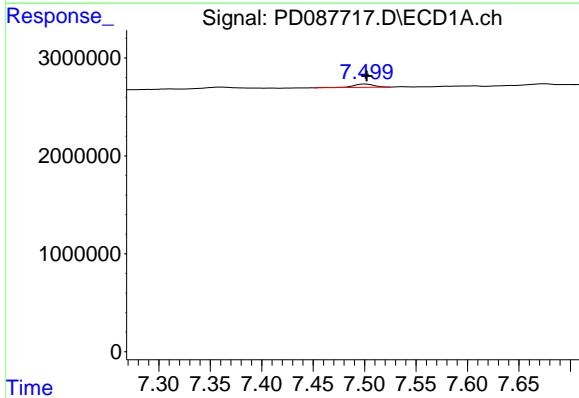
R.T.: 6.834 min  
 Delta R.T.: 0.040 min  
 Response: -517071  
 Conc: N.D.

Instrument :  
 ECD\_D  
 ClientSampleId :



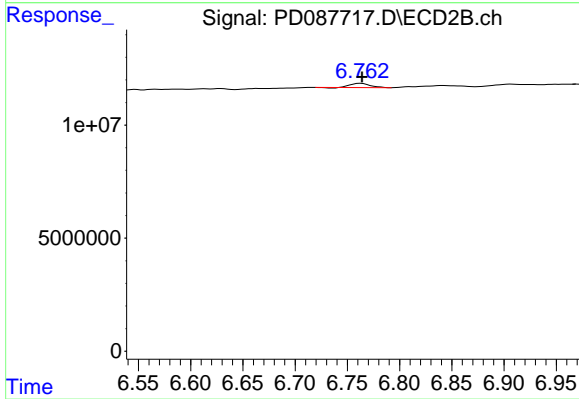
#15 Endosulfan II

R.T.: 6.103 min  
 Delta R.T.: 0.014 min  
 Response: 1839561  
 Conc: 0.12 ng/ml



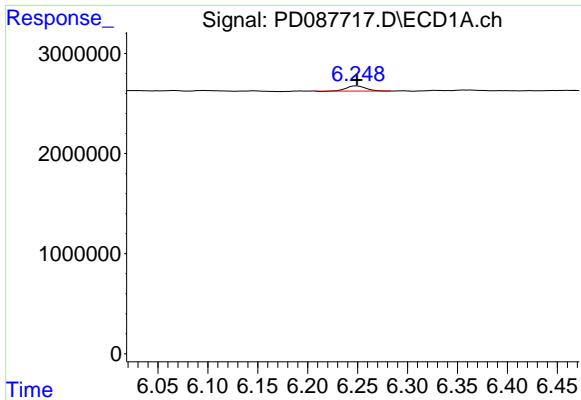
#20 Methoxychlor

R.T.: 7.501 min  
 Delta R.T.: -0.001 min  
 Response: 464996  
 Conc: 0.29 ng/ml



#20 Methoxychlor

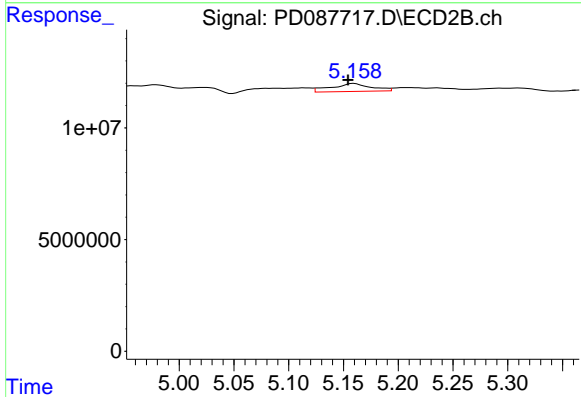
R.T.: 6.763 min  
 Delta R.T.: -0.001 min  
 Response: 2353269  
 Conc: 0.38 ng/ml



#22 Toxaphene-1

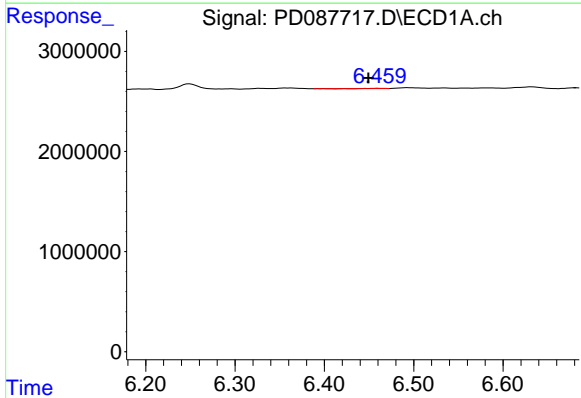
R.T.: 6.249 min  
 Delta R.T.: 0.000 min  
 Response: 656291  
 Conc: 28.72 ng/ml

Instrument :  
 ECD\_D  
 ClientSampleId :



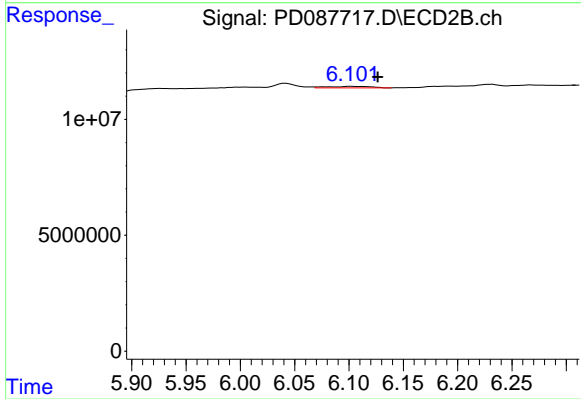
#22 Toxaphene-1

R.T.: 5.160 min  
 Delta R.T.: 0.006 min  
 Response: 8936654  
 Conc: 102.96 ng/ml



#23 Toxaphene-2

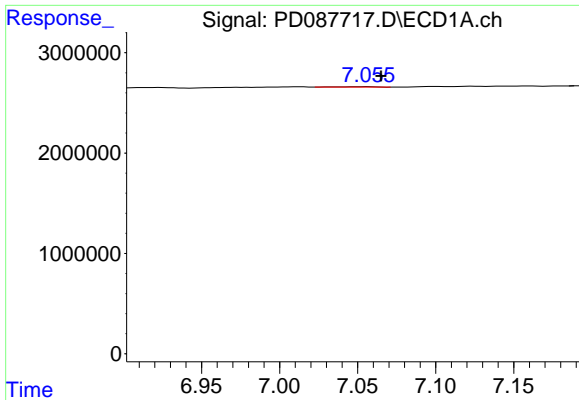
R.T.: 6.461 min  
 Delta R.T.: 0.011 min  
 Response: 10450  
 Conc: 0.32 ng/ml



#23 Toxaphene-2

R.T.: 6.103 min  
 Delta R.T.: -0.024 min  
 Response: 1839561  
 Conc: 19.65 ng/ml

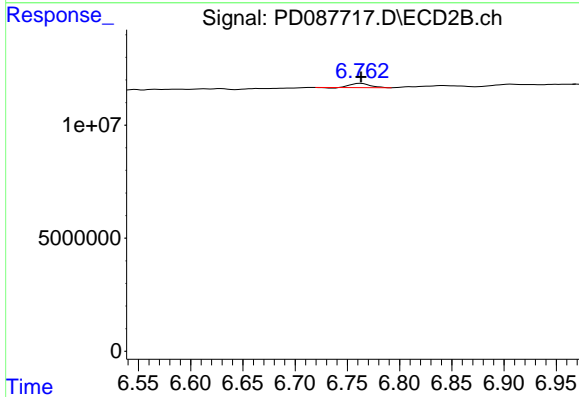




#24 Toxaphene-3

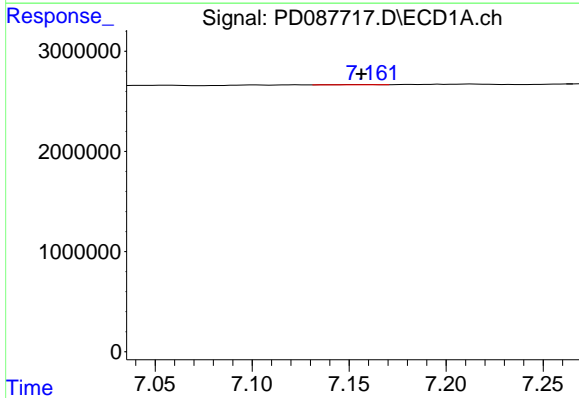
R.T.: 7.056 min  
 Delta R.T.: -0.009 min  
 Response: 61882  
 Conc: 0.70 ng/ml

Instrument :  
 ECD\_D  
 ClientSampleId :



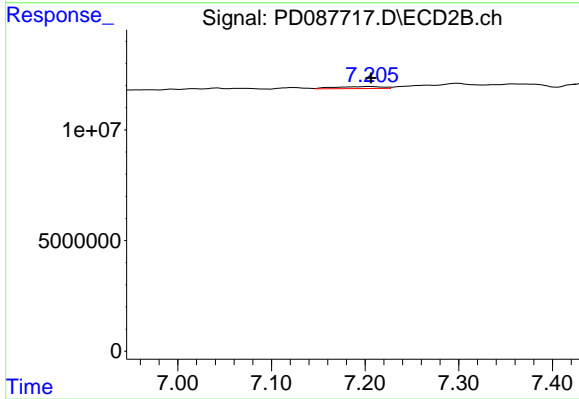
#24 Toxaphene-3

R.T.: 6.763 min  
 Delta R.T.: 0.000 min  
 Response: 2353269  
 Conc: 7.91 ng/ml



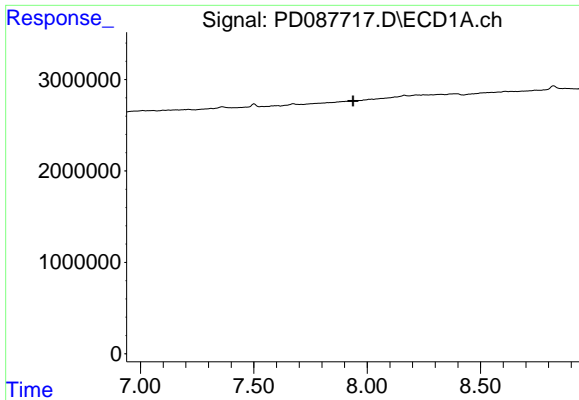
#25 Toxaphene-4

R.T.: 7.160 min  
 Delta R.T.: 0.004 min  
 Response: 34800  
 Conc: 0.53 ng/ml



#25 Toxaphene-4

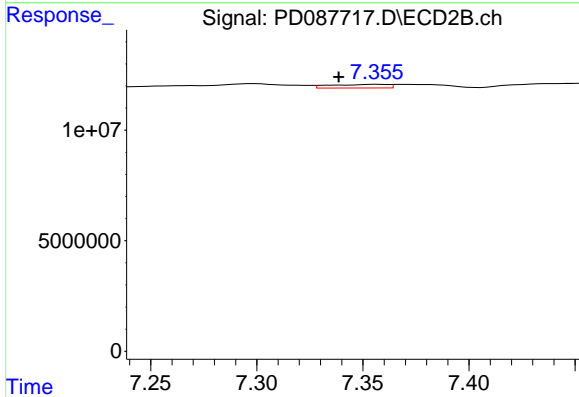
R.T.: 7.206 min  
 Delta R.T.: 0.000 min  
 Response: 3125489  
 Conc: 14.75 ng/ml



#26 Toxaphene-5

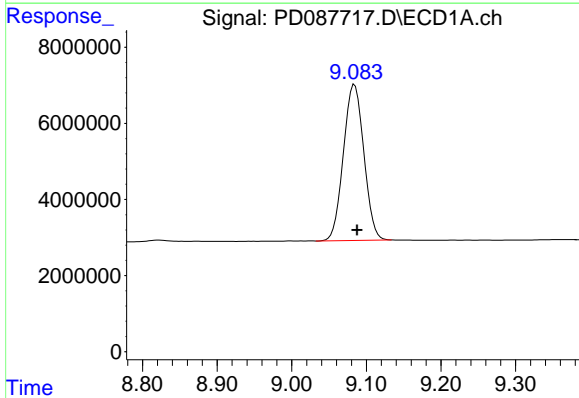
R.T.: 0.000 min  
 Exp R.T.: 7.938 min  
 Response: 0  
 Conc: N.D.

Instrument :  
 ECD\_D  
 ClientSampleId :



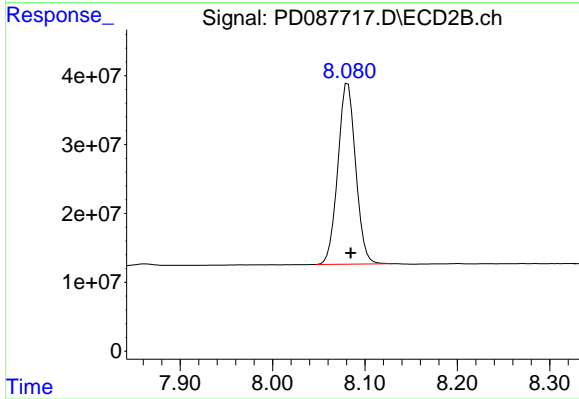
#26 Toxaphene-5

R.T.: 7.357 min  
 Delta R.T.: 0.018 min  
 Response: 3077438  
 Conc: 19.84 ng/ml



#27 Decachlorobiphenyl

R.T.: 9.084 min  
 Delta R.T.: -0.003 min  
 Response: 78034125  
 Conc: 23.34 ng/ml



#27 Decachlorobiphenyl

R.T.: 8.082 min  
 Delta R.T.: -0.003 min  
 Response: 352390030  
 Conc: 24.33 ng/ml