

Data Path : Z:\pestpcbsrv\HPCHEM1\ECD_D\Data\PD020425\
 Data File : PD087699.D
 Signal(s) : Signal #1: ECD1A.ch Signal #2: ECD2B.ch
 Acq On : 04 Feb 2025 12:52
 Operator : AR\AJ
 Sample : Q1226-02DL2 20X
 Misc :
 ALS Vial : 6 Sample Multiplier: 1

Instrument :
 ECD_D
ClientSampleId :
 DCZJ7DL2

Manual Integrations
APPROVED
 Reviewed By :Abdul Mirza 02/05/2025
 Supervised By :Ankita Jodhani 02/05/2025

Integration File signal 1: autoint1.e
 Integration File signal 2: autoint2.e
 Quant Time: Feb 05 08:01:15 2025
 Quant Method : Z:\pestpcbsrv\HPCHEM1\ECD_D\Method\PD011625CLP.M
 Quant Title : GC Extractables
 QLast Update : Thu Jan 16 13:39:07 2025
 Response via : Initial Calibration
 Integrator: ChemStation

Volume Inj. : 1 µl
 Signal #1 Phase : ZB-MR2 Signal #2 Phase: ZB-MR2
 Signal #1 Info : 30M x 0.32mm x0.5 Signal #2 Info : 30M x 0.32mm x 0.25µm

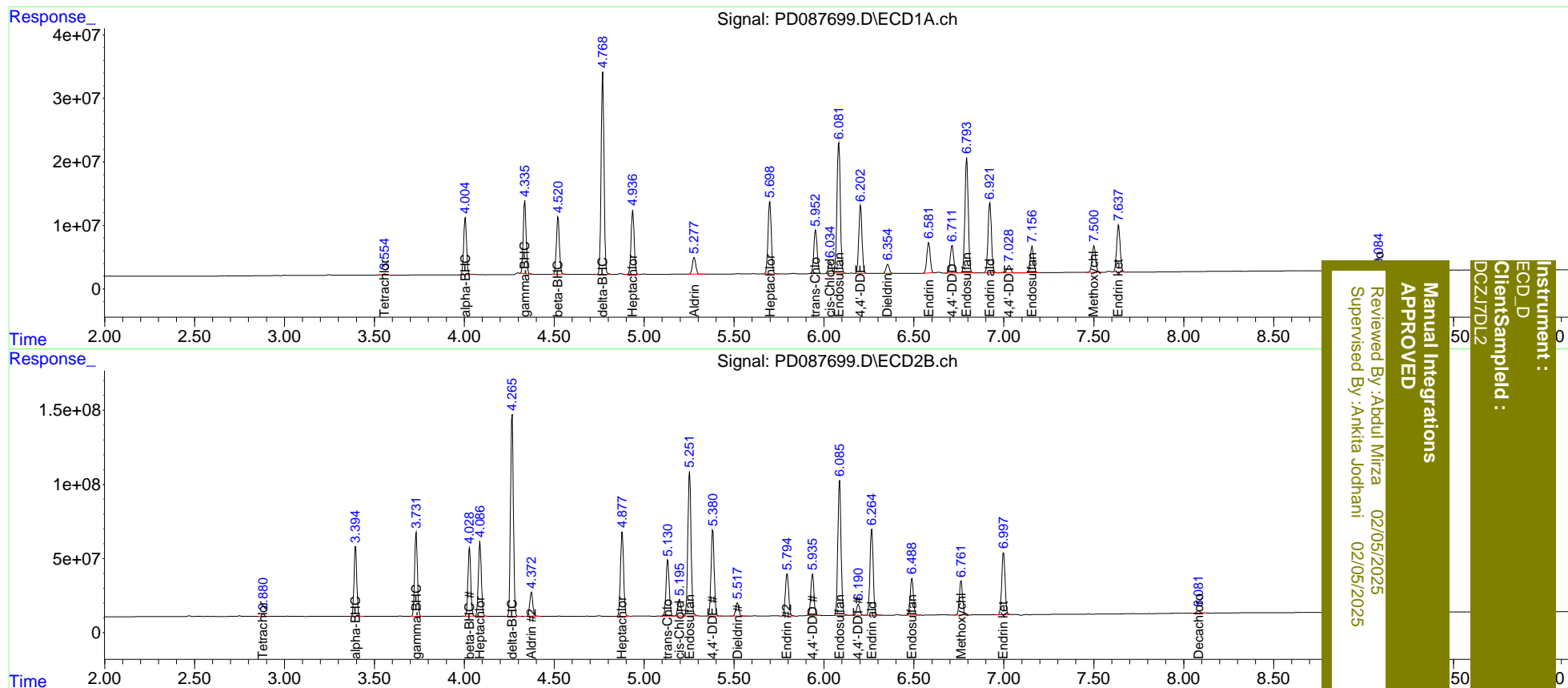
Compound	RT#1	RT#2	Resp#1	Resp#2	ng/ml	ng/ml
System Monitoring Compounds						
1) SA Tetrachlo...	3.556	2.882	2151903	16702985	1.056	1.351 #
2) SA Decachlor...	9.085	8.082	4091420	19730833	1.224	1.362
Target Compounds						
2) A alpha-BHC	4.006	3.395	99836446	499.0E6	24.032	25.198
3) MA gamma-BHC...	4.337	3.733	126.5E6	605.3E6	31.437	33.048
4) MA Heptachlor	4.937	4.087	121.1E6	571.7E6	29.619	30.632
5) MB Aldrin	5.279	4.373	34472507	193.0E6	8.607	10.681
6) B beta-BHC	4.521	4.029	104.7E6	498.9E6	58.322	58.486
7) B delta-BHC	4.770	4.266	357.8E6	1475.4E6	86.583	79.050
8) B Heptachlo...	5.699	4.878	145.2E6	684.1E6	38.852	40.420
9) A Endosulfan I	6.081	5.253	268.1E6	1204.7E6	76.942m	75.897
10) B trans-Chl...	5.954	5.132	87832802	463.5E6	23.841	25.782
11) B cis-Chlor...	6.034	5.197	24952405	135.0E6	6.712m	7.801
12) B 4,4'-DDE	6.202	5.382	133.4E6	705.0E6	37.861m	43.043
13) MA Dieldrin	6.355	5.519	18736662	109.0E6	4.915	6.529 #
14) MA Endrin	6.582	5.795	63200932	362.7E6	19.472	24.276
15) B Endosulfa...	6.794	6.087	232.6E6	1130.8E6	72.250	76.331
16) A 4,4'-DDD	6.713	5.937	56092362	339.4E6	20.401	25.385
17) MA 4,4'-DDT	7.029	6.191	16400081	91966694	5.659	6.674
18) B Endrin al...	6.922	6.265	146.1E6	732.7E6	57.973	63.550
19) B Endosulfa...	7.157	6.489	55828225	313.4E6	18.083	21.556
20) A Methoxychlor	7.502	6.762	56036305	285.8E6	35.369	46.395 #
21) B Endrin ke...	7.638	6.998	99195053	540.8E6	28.813	34.054

(f)=RT Delta > 1/2 Window (#)=Amounts differ by > 25% (m)=manual int.

Data Path : Z:\pestpcbsrv\HPCHEM1\ECD_D\Data\PD020425\
 Data File : PD087699.D
 Signal(s) : Signal #1: ECD1A.ch Signal #2: ECD2B.ch
 Acq On : 04 Feb 2025 12:52
 Operator : AR\AJ
 Sample : Q1226-02DL2 20X
 Misc :
 ALS Vial : 6 Sample Multiplier: 1

Integration File signal 1: autoint1.e
 Integration File signal 2: autoint2.e
 Quant Time: Feb 05 08:01:15 2025
 Quant Method : Z:\pestpcbsrv\HPCHEM1\ECD_D\Method\PD011625CLP.M
 Quant Title : GC Extractables
 QLast Update : Thu Jan 16 13:39:07 2025
 Response via : Initial Calibration
 Integrator: ChemStation

Volume Inj. : 1 µl
 Signal #1 Phase : ZB-MR1 Signal #2 Phase: ZB-MR2
 Signal #1 Info : 30M x 0.32mm x0.5 Signal #2 Info : 30M x 0.32mm x 0.25µm



Instrument : ECD_D
 Client Sampled : DCZJDL2
 Manual Integrations APPROVED
 Reviewed By : Aboul Mirza 02/05/2025
 Supervised By : Ankita Jodhani 02/05/2025