

Data Path : Z:\pestpcbsrv\HPCHEM1\ECD_D\Data\PD020525\
 Data File : PD087739.D
 Signal(s) : Signal #1: ECD1A.ch Signal #2: ECD2B.ch
 Acq On : 05 Feb 2025 09:32
 Operator : AR\AJ
 Sample : PIBLK120
 Misc :
 ALS Vial : 2 Sample Multiplier: 1

Instrument :
 ECD_D
 ClientSampleId :
 PIBLK483

Integration File signal 1: autoint1.e
 Integration File signal 2: autoint2.e
 Quant Time: Feb 06 07:51:56 2025
 Quant Method : Z:\pestpcbsrv\HPCHEM1\ECD_D\Method\PD011625CLP.M
 Quant Title : GC Extractables
 QLast Update : Thu Jan 16 13:39:07 2025
 Response via : Initial Calibration
 Integrator: ChemStation

Volume Inj. : 1 µl
 Signal #1 Phase : ZB-MR1 Signal #2 Phase: ZB-MR2
 Signal #1 Info : 30M x 0.32mm x0.5 Signal #2 Info : 30M x 0.32mm x 0.25µm

Compound	RT#1	RT#2	Resp#1	Resp#2	ng/ml	ng/ml

System Monitoring Compounds						
1) SA Tetrachlo...	3.555	2.881	49770944	318.3E6	24.422	25.736
27) SA Decachlor...	9.081	8.079	108.1E6	497.4E6	32.324	34.343

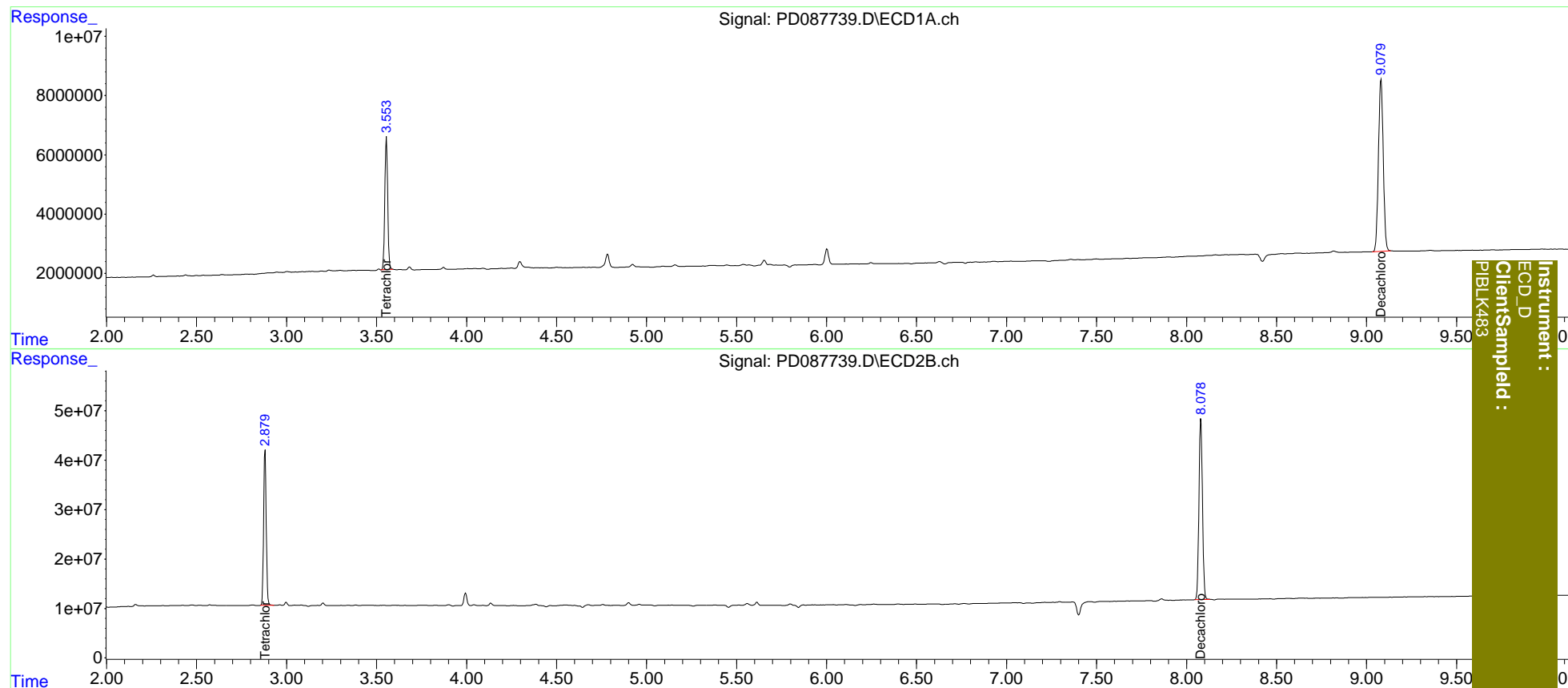
Target Compounds

(f)=RT Delta > 1/2 Window (#)=Amounts differ by > 25% (m)=manual int.

Data Path : Z:\pestpcbsrv\HPCHEM1\ECD_D\Data\PD020525\
 Data File : PD087739.D
 Signal(s) : Signal #1: ECD1A.ch Signal #2: ECD2B.ch
 Acq On : 05 Feb 2025 09:32
 Operator : AR\AJ
 Sample : PIBLK120
 Misc :
 ALS Vial : 2 Sample Multiplier: 1

Integration File signal 1: autoint1.e
 Integration File signal 2: autoint2.e
 Quant Time: Feb 06 07:51:56 2025
 Quant Method : Z:\pestpcbsrv\HPCHEM1\ECD_D\Method\PD011625CLP.M
 Quant Title : GC Extractables
 QLast Update : Thu Jan 16 13:39:07 2025
 Response via : Initial Calibration
 Integrator: ChemStation

Volume Inj. : 1 µl
 Signal #1 Phase : ZB-MR1 Signal #2 Phase: ZB-MR2
 Signal #1 Info : 30M x 0.32mm x 0.5 Signal #2 Info : 30M x 0.32mm x 0.25µm



Instrument :
 ECD_D
 ClientSampled :
 PIBLK483