

Data Path : Z:\pestpcbsrv\HPCHEM1\ECD_D\Data\PD020625\
 Data File : PD087767.D
 Signal(s) : Signal #1: ECD1A.ch Signal #2: ECD2B.ch
 Acq On : 06 Feb 2025 16:27
 Operator : AR\AJ
 Sample : PTOXCCC500
 Misc :
 ALS Vial : 6 Sample Multiplier: 1

Instrument :
 ECD_D
ClientSampleId :
 PTOXCCC500

Manual Integrations
APPROVED
 Reviewed By :Abdul Mirza 02/07/2025
 Supervised By :Ankita Jodhani 02/07/2025

Integration File signal 1: autoint1.e
 Integration File signal 2: autoint2.e
 Quant Time: Feb 07 02:23:09 2025
 Quant Method : Z:\pestpcbsrv\HPCHEM1\ECD_D\Method\DTX012325.M
 Quant Title : GC Extractables
 QLast Update : Wed Jan 22 15:21:43 2025
 Response via : Initial Calibration
 Integrator: ChemStation

Volume Inj. : 1 µl
 Signal #1 Phase : ZB-MR1 Signal #2 Phase: ZB-MR2
 Signal #1 Info : 30M x 0.32mm x 0. Signal #2 Info : 30M x 0.32mm x0.25µm

Compound	RT#1	RT#2	Resp#1	Resp#2	ng/ml	ng/ml

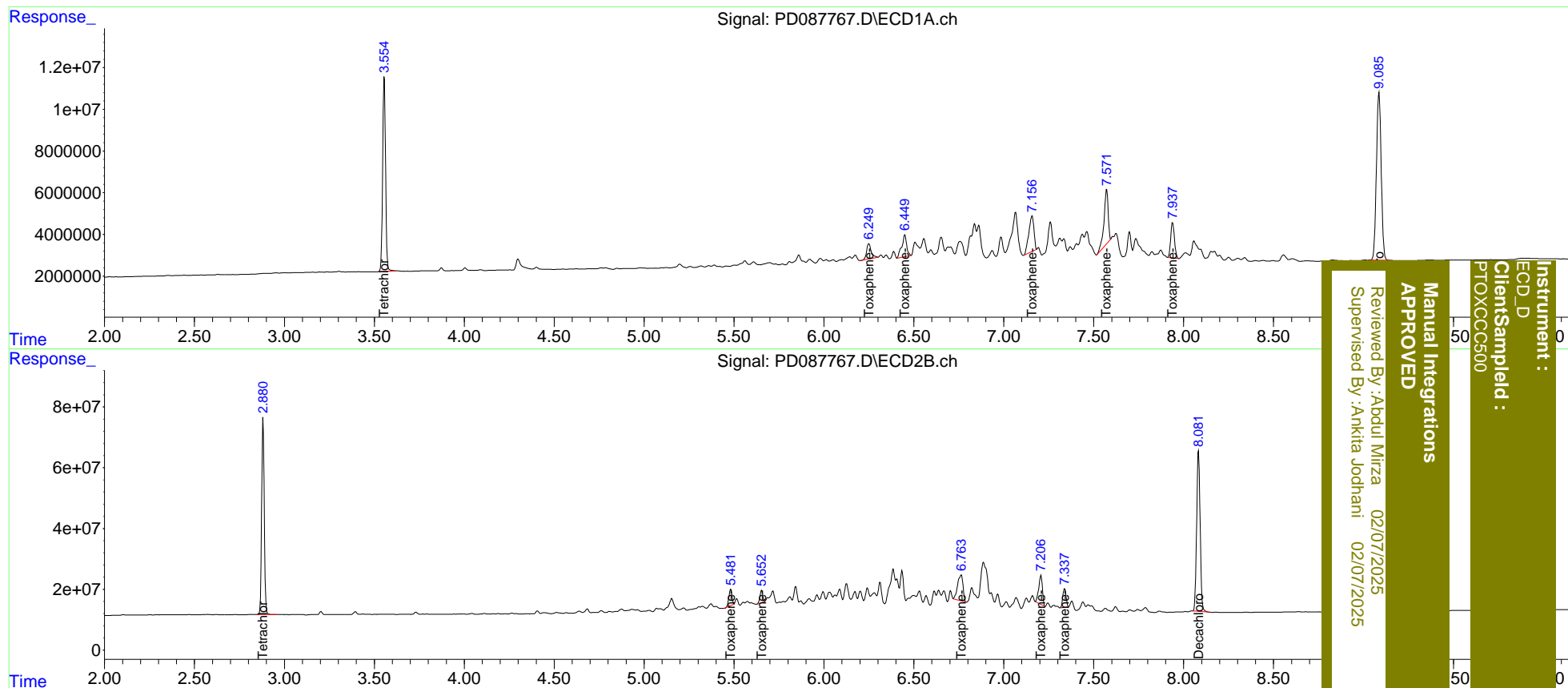
System Monitoring Compounds						
1) SA Tetrachlo...	3.556	2.882	105.3E6	653.7E6	52.344	54.290
7) SA Decachlor...	9.087	8.083	149.6E6	718.0E6	49.950	50.702
Target Compounds						
2) Toxaphene-1	6.250	5.482	13188348	61941615	520.158	513.043
3) Toxaphene-2	6.450	5.653	19985237	43441907	557.649	536.869
4) Toxaphene-3	7.158	6.764	33709603	174.9E6	500.182	479.920
5) Toxaphene-4	7.572	7.207	41602749	135.4E6	484.920	498.204
6) Toxaphene-5	7.937	7.337	24666281	78061957	489.928m	433.228m

(f)=RT Delta > 1/2 Window (#)=Amounts differ by > 25% (m)=manual int.

Data Path : Z:\pestpcbsrv\HPCHEM1\ECD_D\Data\PD020625\
 Data File : PD087767.D
 Signal(s) : Signal #1: ECD1A.ch Signal #2: ECD2B.ch
 Acq On : 06 Feb 2025 16:27
 Operator : AR\AJ
 Sample : PTOXCCC500
 Misc :
 ALS Vial : 6 Sample Multiplier: 1

Integration File signal 1: autoint1.e
 Integration File signal 2: autoint2.e
 Quant Time: Feb 07 02:23:09 2025
 Quant Method : Z:\pestpcbsrv\HPCHEM1\ECD_D\Method\DTX012325.M
 Quant Title : GC Extractables
 QLast Update : Wed Jan 22 15:21:43 2025
 Response via : Initial Calibration
 Integrator: ChemStation

Volume Inj. : 1 µl
 Signal #1 Phase : ZB-MR1 Signal #2 Phase: ZB-MR2
 Signal #1 Info : 30M x 0.32mm x 0. Signal #2 Info : 30M x 0.32mm x0.25µm



Instrument : ECD_D
 Client Sampled : PTOXCCC500
 Manual Integrations APPROVED
 Reviewed By : Abdul Mirza 02/07/2025
 Supervised By : Ankita Jodhani 02/07/2025