

Data Path : Z:\pestpcbsrv\HPCHEM1\ECD_D\Data\PD020725\
 Data File : PD087792.D
 Signal(s) : Signal #1: ECD1A.ch Signal #2: ECD2B.ch
 Acq On : 07 Feb 2025 13:22
 Operator : AR\AJ
 Sample : Q1168-02
 Misc : CHLOR LOQ 50PPB
 ALS Vial : 15 Sample Multiplier: 1

Instrument :
 ECD_D
 ClientSampleId :

Integration File signal 1: autoint1.e
 Integration File signal 2: autoint2.e
 Quant Time: Feb 08 00:05:52 2025
 Quant Method : Z:\pestpcbsrv\HPCHEM1\ECD_D\Method\PD012325.M
 Quant Title : GC Extractables
 QLast Update : Wed Jan 22 14:33:08 2025
 Response via : Initial Calibration
 Integrator: ChemStation

Volume Inj. : 1 µl
 Signal #1 Phase : ZB-MR2 Signal #2 Phase: ZB-MR2
 Signal #1 Info : 30M x 0.32mm x0.5 Signal #2 Info : 30M x 0.32mm x 0.25µm

Compound	RT#1	RT#2	Resp#1	Resp#2	ng/ml	ng/ml

System Monitoring Compounds						
1) SA Tetrachlo...	3.558	2.882	34627450	230.5E6	17.380	19.163
28) SA Decachlor...	9.087	8.082	55223677	272.4E6	18.106	19.278
Target Compounds						
2) A alpha-BHC	4.032f	3.387	560901	818060	0.139	0.044 #
4) MA Heptachlor	4.938	4.088	15808857	46611400	4.241	2.691 #
5) MB Aldrin	5.251f	4.387	7640946	16558381	1.996	0.948 #
6) B beta-BHC	4.504f	4.043f	584005	4616429	0.370	0.605 #
7) B delta-BHC	4.787f	4.269	9821010	4931280	2.435	0.273 #
8) B Heptachlo...	5.681f	0.000	4560883	0	1.335	N.D. #
9) A Endosulfan I	0.000	5.237	0	10257042	N.D.	0.688 #
10) B gamma-Chl...	5.957	5.133	23774610	101.6E6	7.193	6.248
11) B alpha-Chl...	6.042	5.197	30388648	88162551	9.123	5.526 #
12) B 4,4'-DDE	0.000	5.382	0	1834786	N.D.	0.117 #
13) MA Dieldrin	6.364	5.496f	751417	1018754	0.223	0.063 #
14) MA Endrin	0.000	5.799	0	19853152	N.D.	1.333 #
15) B Endosulfa...	6.787	6.097	478062	36136398	0.167	2.531 #
16) A 4,4'-DDD	6.693f	5.929	3650587	-3236757	1.517	N.D. #
17) MA 4,4'-DDT	7.005f	6.192	493990	1668806	0.192	0.124 #
18) B Endrin al...	6.935f	6.267	607241	3273486	0.262	0.281
19) B Endosulfa...	7.161	6.493	37011	1492151	0.013	0.105 #
20) A Methoxychlor	7.501	6.769	161179	915786	0.110	0.120
21) B Endrin ke...	0.000	6.998	0	190190	N.D.	0.012 #
22) Mirex	8.124	7.215f	242377	4783844	0.105	0.378 #
23) Chlordane-1	4.725	3.909	7234615	33046777	56.581	59.415
24) Chlordane-2	5.251	4.493	7640946	37495421	56.320	63.447
25) Chlordane-3	5.957	5.133	23774610	101.6E6	47.292	58.222
26) Chlordane-4	6.042	5.197	30388648	88162551	49.998	59.753
27) Chlordane-5	6.882	6.097	4730262	36136398	44.308	55.194

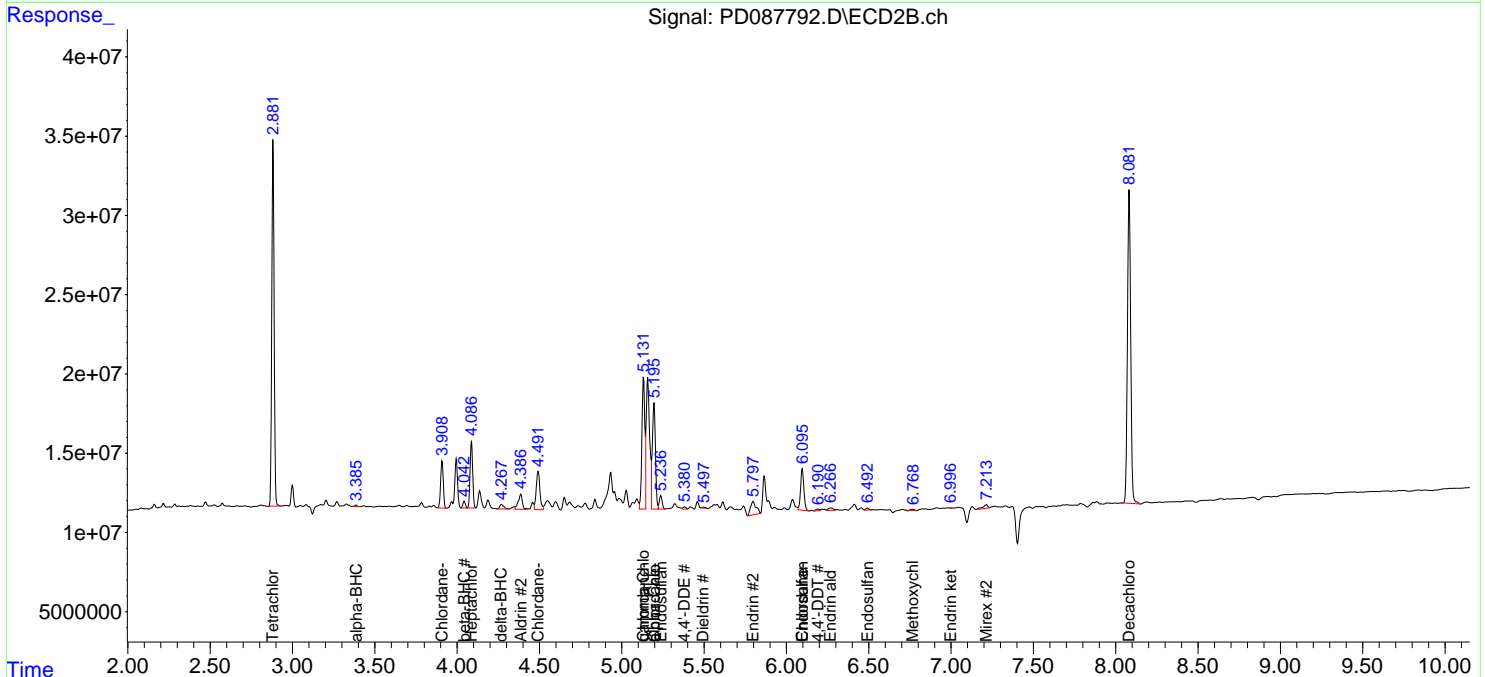
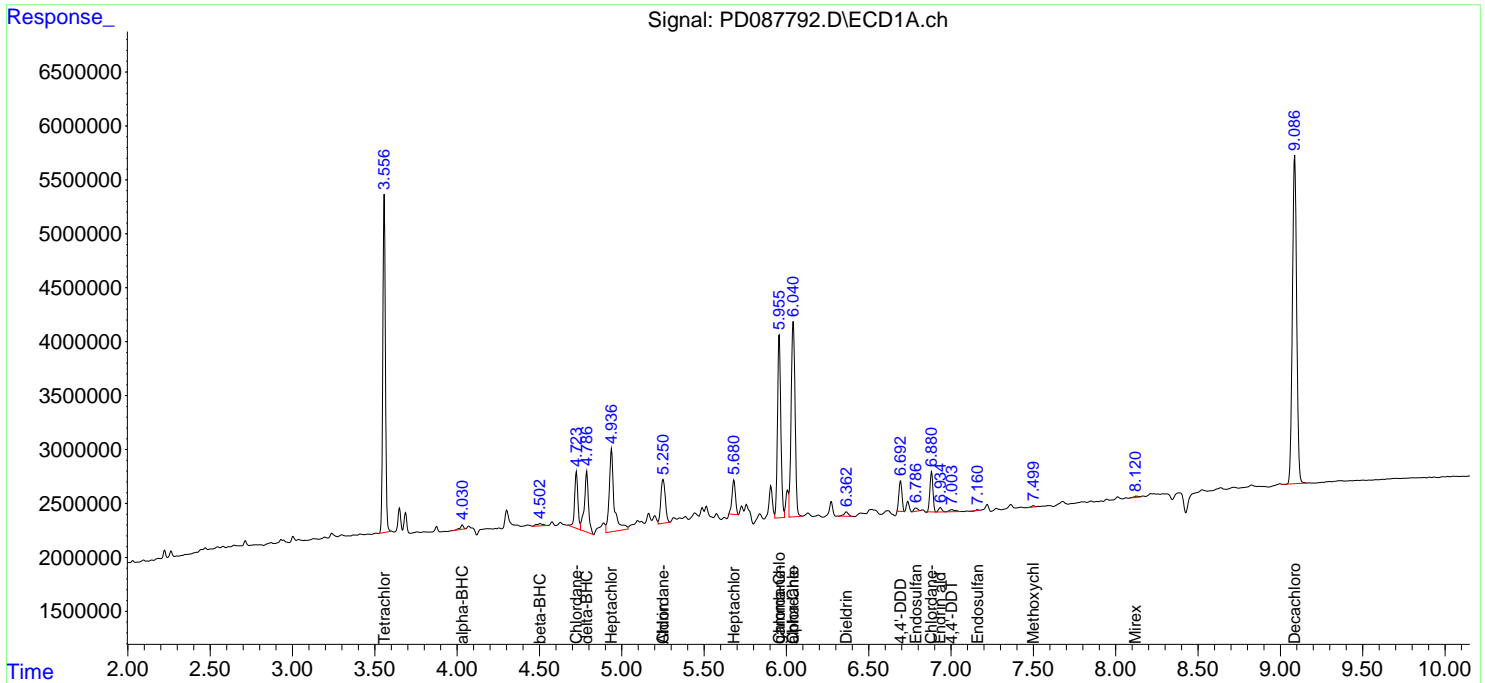
(f)=RT Delta > 1/2 Window (#)=Amounts differ by > 25% (m)=manual int.

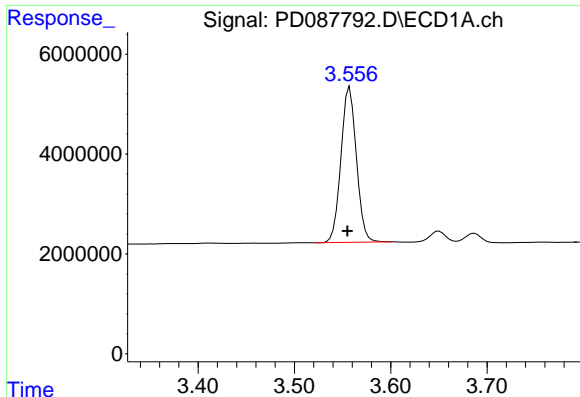
Data Path : Z:\pestpcbsrv\HPCHEM1\ECD_D\Data\PD020725\
 Data File : PD087792.D
 Signal(s) : Signal #1: ECD1A.ch Signal #2: ECD2B.ch
 Acq On : 07 Feb 2025 13:22
 Operator : AR\AJ
 Sample : Q1168-02
 Misc : CHLOR LOQ 50PPB
 ALS Vial : 15 Sample Multiplier: 1

Instrument :
 ECD_D
 ClientSampleId :

Integration File signal 1: autoint1.e
 Integration File signal 2: autoint2.e
 Quant Time: Feb 08 00:05:52 2025
 Quant Method : Z:\pestpcbsrv\HPCHEM1\ECD_D\Method\PD012325.M
 Quant Title : GC Extractables
 QLast Update : Wed Jan 22 14:33:08 2025
 Response via : Initial Calibration
 Integrator: ChemStation

Volume Inj. : 1 µl
 Signal #1 Phase : ZB-MR1 Signal #2 Phase: ZB-MR2
 Signal #1 Info : 30M x 0.32mm x0.5 Signal #2 Info : 30M x 0.32mm x 0.25µm

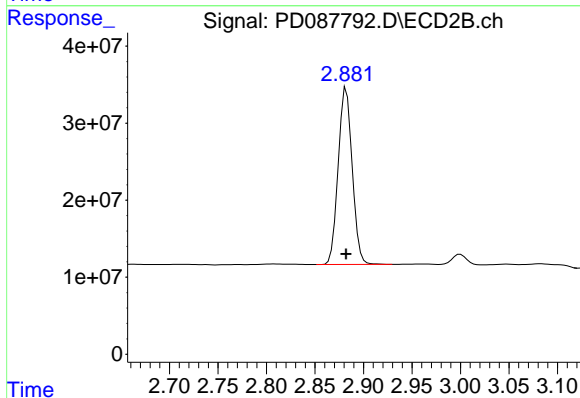




#1 Tetrachloro-m-xylene

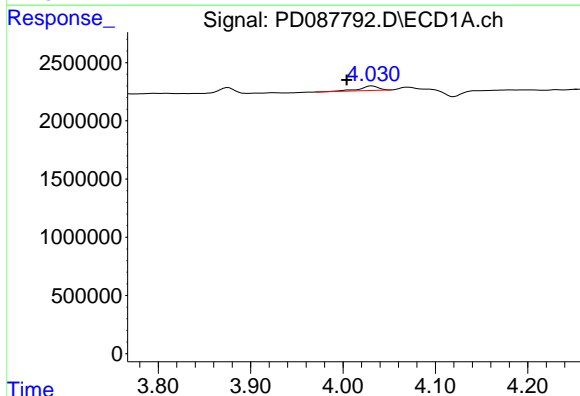
R.T.: 3.558 min
 Delta R.T.: 0.003 min
 Response: 34627450
 Conc: 17.38 ng/ml

Instrument :
 ECD_D
 ClientSampleId :



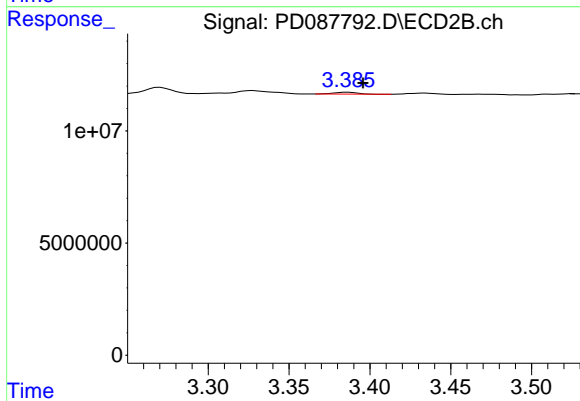
#1 Tetrachloro-m-xylene

R.T.: 2.882 min
 Delta R.T.: 0.000 min
 Response: 230465946
 Conc: 19.16 ng/ml



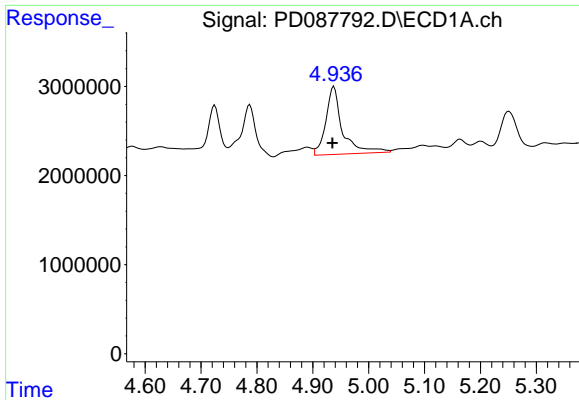
#2 alpha-BHC

R.T.: 4.032 min
 Delta R.T.: 0.028 min
 Response: 560901
 Conc: 0.14 ng/ml



#2 alpha-BHC

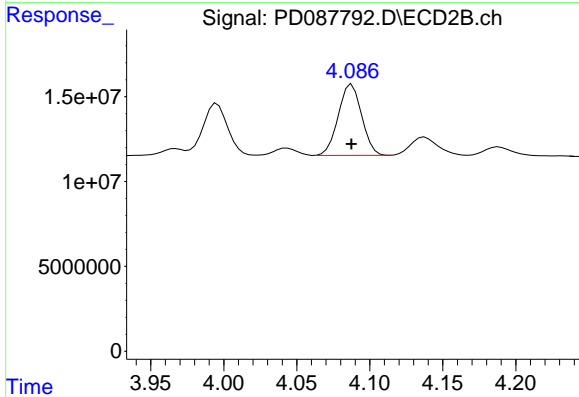
R.T.: 3.387 min
 Delta R.T.: -0.009 min
 Response: 818060
 Conc: 0.04 ng/ml



#4 Heptachlor

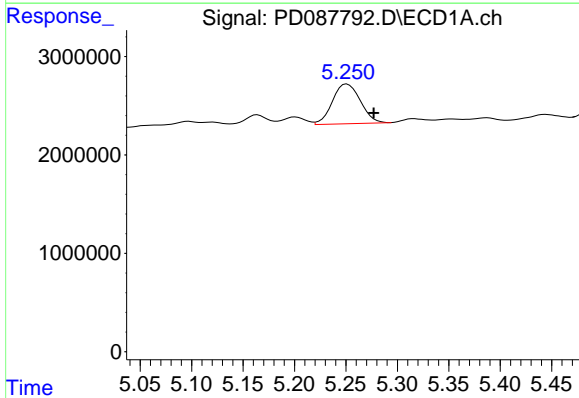
R.T.: 4.938 min
 Delta R.T.: 0.003 min
 Response: 15808857
 Conc: 4.24 ng/ml

Instrument :
 ECD_D
 ClientSampleId :



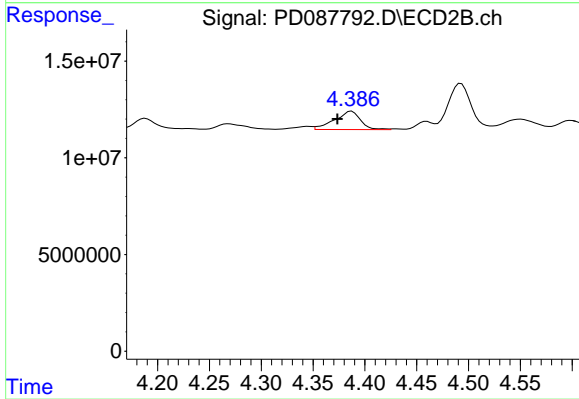
#4 Heptachlor

R.T.: 4.088 min
 Delta R.T.: 0.000 min
 Response: 46611400
 Conc: 2.69 ng/ml



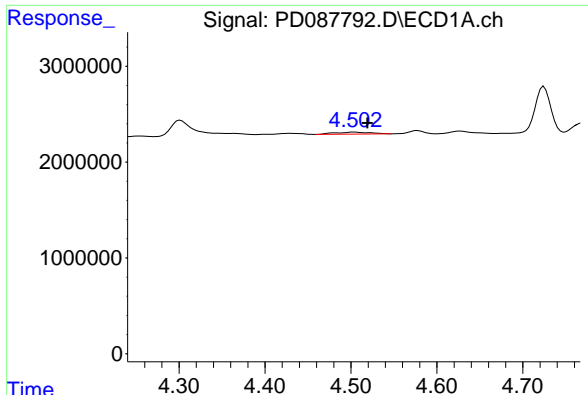
#5 Aldrin

R.T.: 5.251 min
 Delta R.T.: -0.026 min
 Response: 7640946
 Conc: 2.00 ng/ml



#5 Aldrin

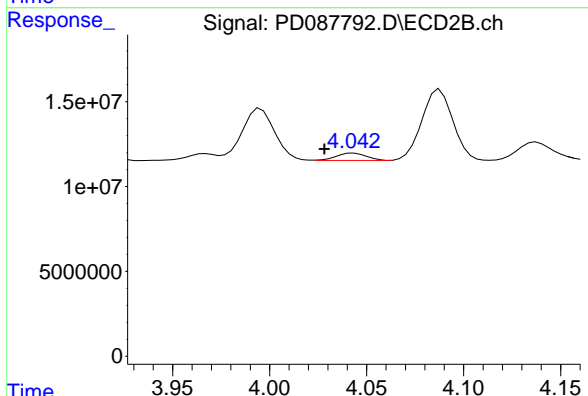
R.T.: 4.387 min
 Delta R.T.: 0.014 min
 Response: 16558381
 Conc: 0.95 ng/ml



#6 beta-BHC

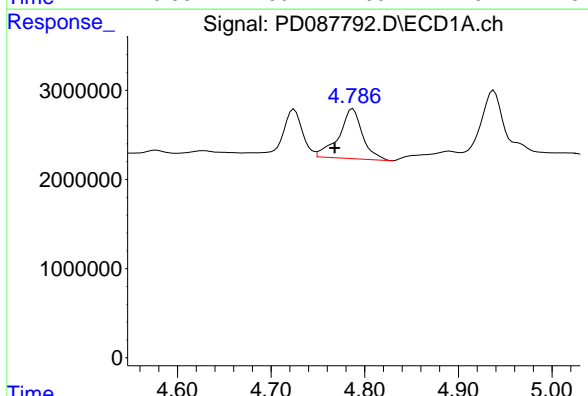
R.T.: 4.504 min
 Delta R.T.: -0.016 min
 Response: 584005
 Conc: 0.37 ng/ml

Instrument :
 ECD_D
 ClientSampleId :



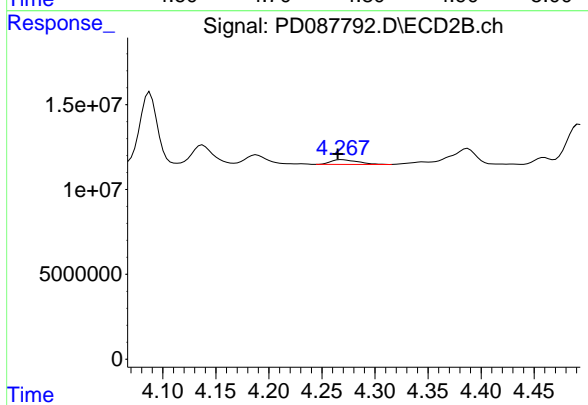
#6 beta-BHC

R.T.: 4.043 min
 Delta R.T.: 0.015 min
 Response: 4616429
 Conc: 0.61 ng/ml



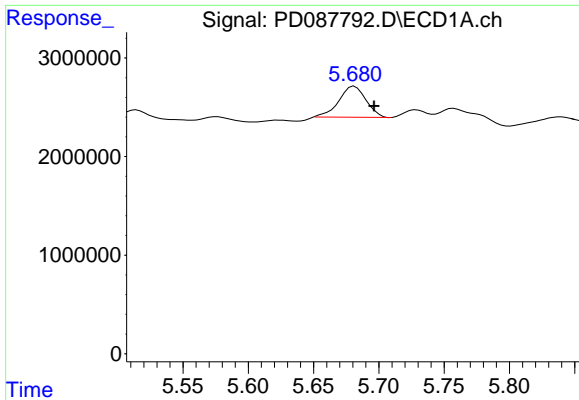
#7 delta-BHC

R.T.: 4.787 min
 Delta R.T.: 0.019 min
 Response: 9821010
 Conc: 2.43 ng/ml



#7 delta-BHC

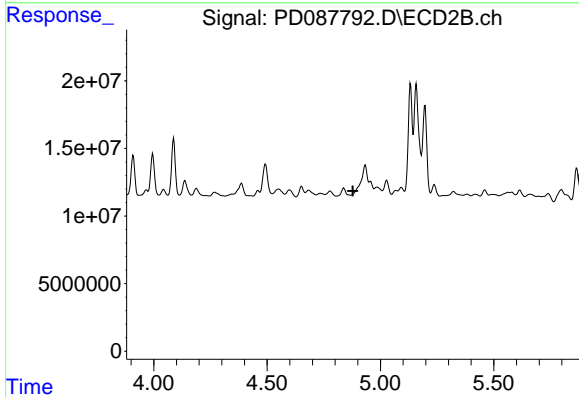
R.T.: 4.269 min
 Delta R.T.: 0.004 min
 Response: 4931280
 Conc: 0.27 ng/ml



#8 Heptachlor epoxide

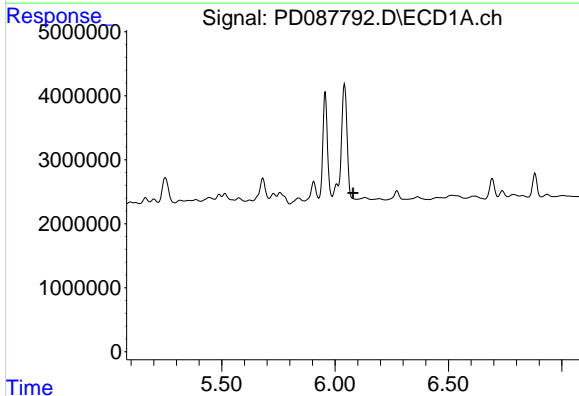
R.T.: 5.681 min
 Delta R.T.: -0.015 min
 Response: 4560883
 Conc: 1.33 ng/ml

Instrument :
 ECD_D
 ClientSampleId :



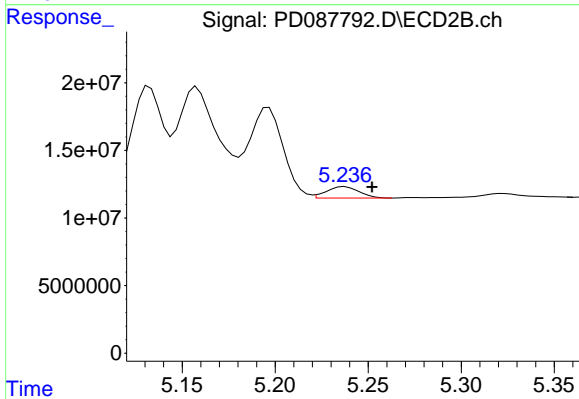
#8 Heptachlor epoxide

R.T.: 0.000 min
 Exp R.T. : 4.878 min
 Response: 0
 Conc: N.D.



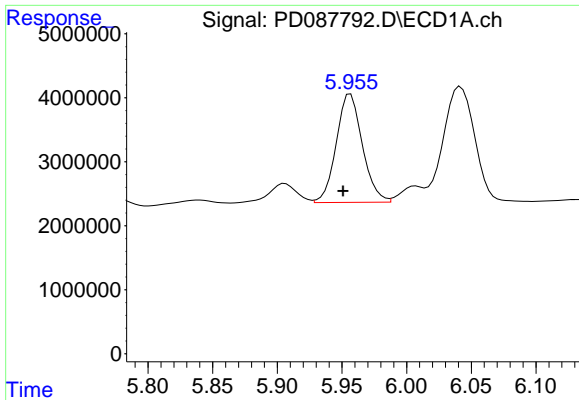
#9 Endosulfan I

R.T.: 0.000 min
 Exp R.T. : 6.080 min
 Response: 0
 Conc: N.D.



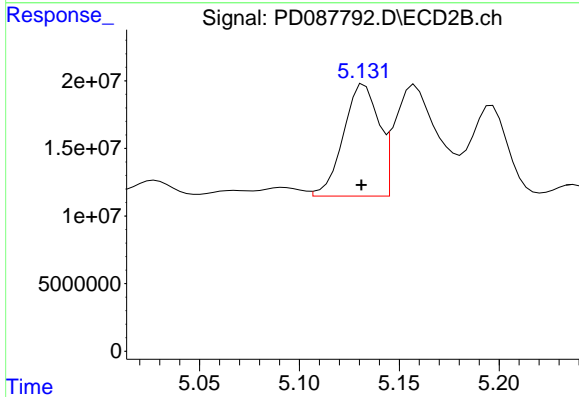
#9 Endosulfan I

R.T.: 5.237 min
 Delta R.T.: -0.015 min
 Response: 10257042
 Conc: 0.69 ng/ml

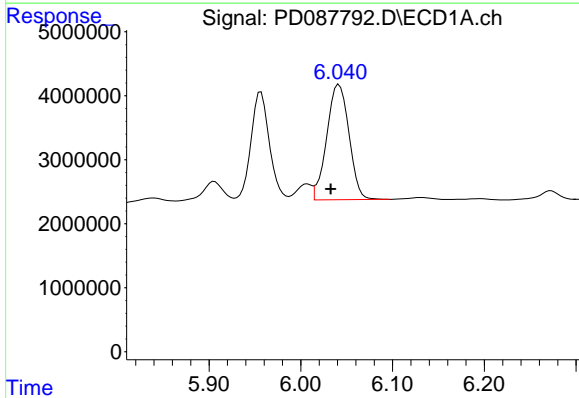


#10 gamma-Chlordane
 R.T.: 5.957 min
 Delta R.T.: 0.006 min
 Response: 23774610
 Conc: 7.19 ng/ml

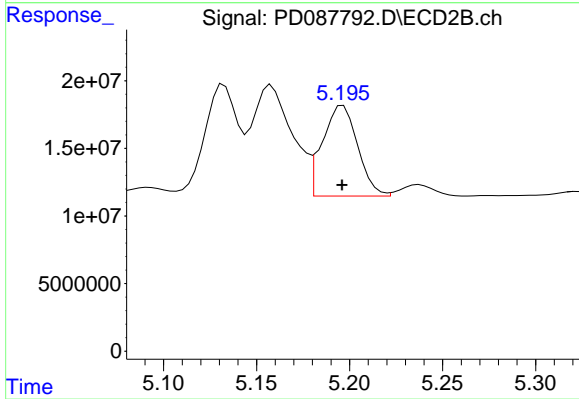
Instrument :
 ECD_D
 ClientSampleId :



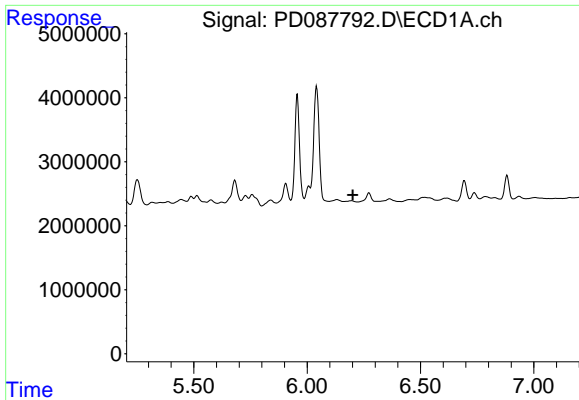
#10 gamma-Chlordane
 R.T.: 5.133 min
 Delta R.T.: 0.001 min
 Response: 101621497
 Conc: 6.25 ng/ml



#11 alpha-Chlordane
 R.T.: 6.042 min
 Delta R.T.: 0.009 min
 Response: 30388648
 Conc: 9.12 ng/ml



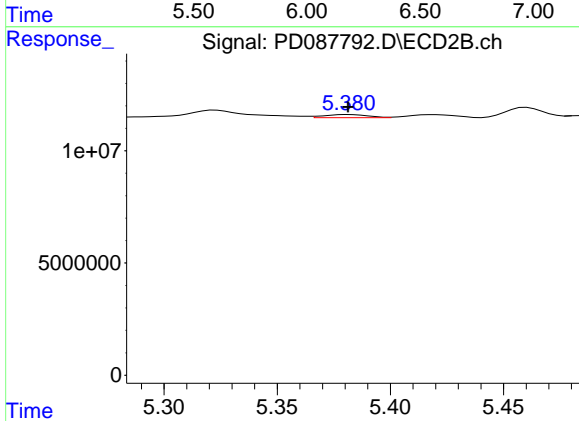
#11 alpha-Chlordane
 R.T.: 5.197 min
 Delta R.T.: 0.000 min
 Response: 88162551
 Conc: 5.53 ng/ml



#12 4,4'-DDE

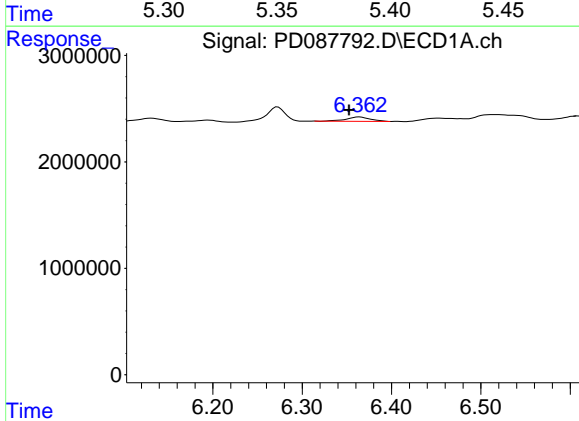
R.T.: 0.000 min
 Exp R.T.: 6.201 min
 Response: 0
 Conc: N.D.

Instrument :
 ECD_D
 ClientSampleId :



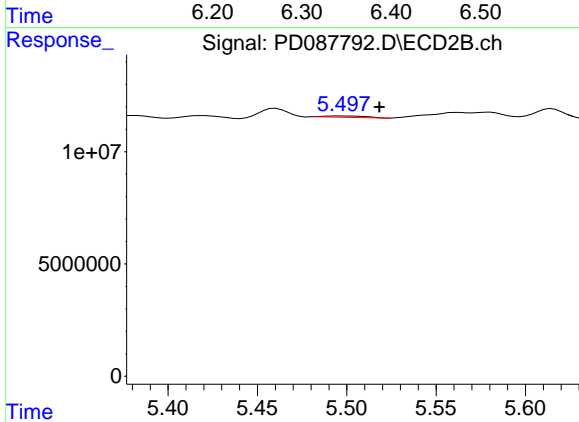
#12 4,4'-DDE

R.T.: 5.382 min
 Delta R.T.: 0.000 min
 Response: 1834786
 Conc: 0.12 ng/ml



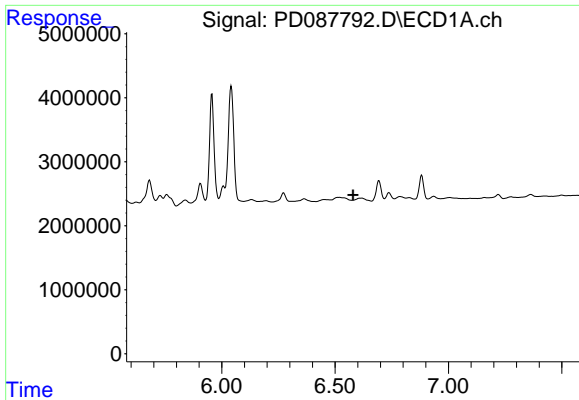
#13 Dieldrin

R.T.: 6.364 min
 Delta R.T.: 0.011 min
 Response: 751417
 Conc: 0.22 ng/ml



#13 Dieldrin

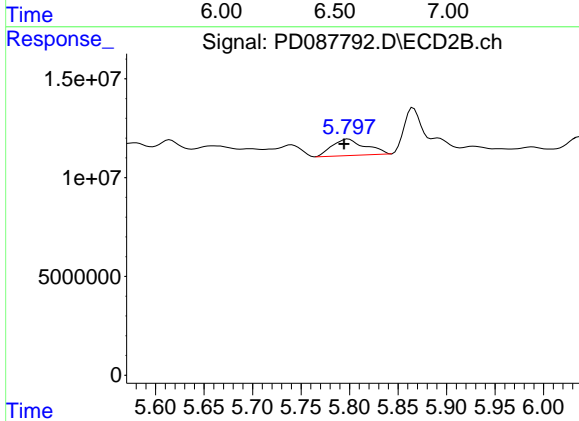
R.T.: 5.496 min
 Delta R.T.: -0.022 min
 Response: 1018754
 Conc: 0.06 ng/ml



#14 Endrin

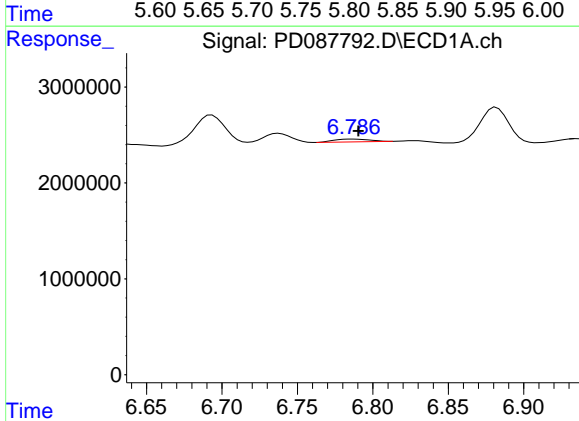
R.T.: 0.000 min
 Exp R.T.: 6.579 min
 Response: 0
 Conc: N.D.

Instrument :
 ECD_D
 ClientSampleId :



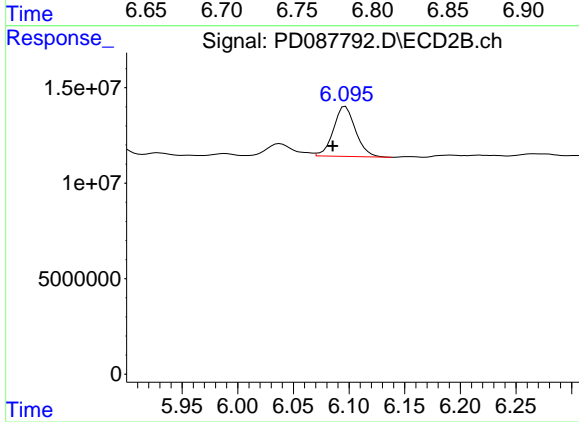
#14 Endrin

R.T.: 5.799 min
 Delta R.T.: 0.004 min
 Response: 19853152
 Conc: 1.33 ng/ml



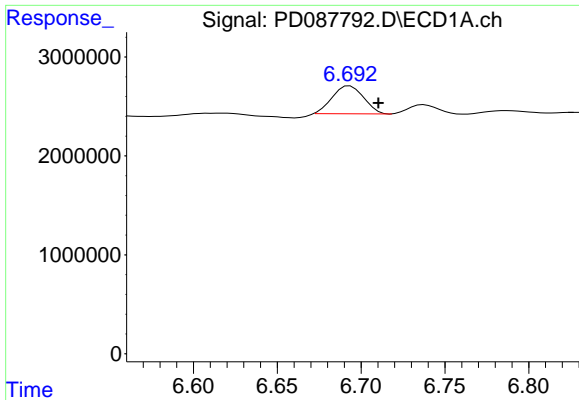
#15 Endosulfan II

R.T.: 6.787 min
 Delta R.T.: -0.004 min
 Response: 478062
 Conc: 0.17 ng/ml



#15 Endosulfan II

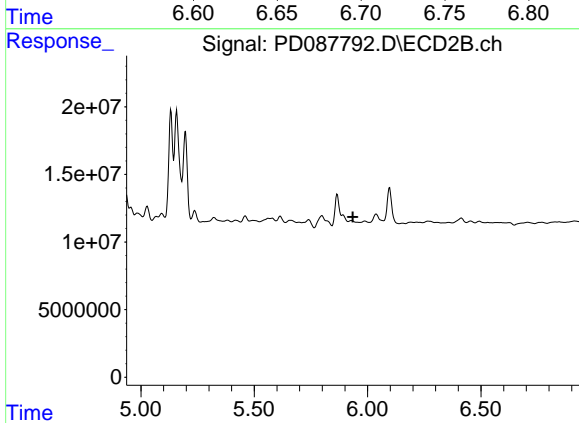
R.T.: 6.097 min
 Delta R.T.: 0.011 min
 Response: 36136398
 Conc: 2.53 ng/ml



#16 4,4'-DDD

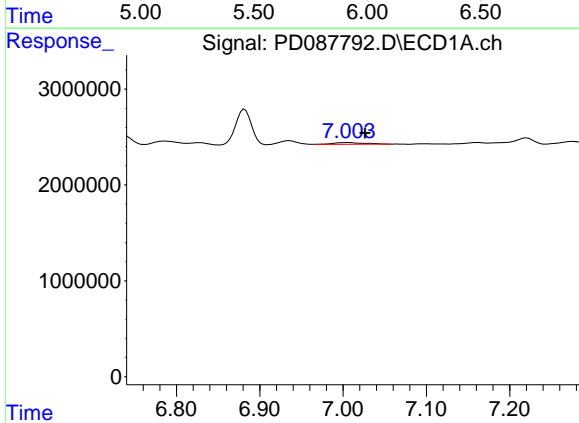
R.T.: 6.693 min
 Delta R.T.: -0.017 min
 Response: 3650587
 Conc: 1.52 ng/ml

Instrument :
 ECD_D
 ClientSampleId :



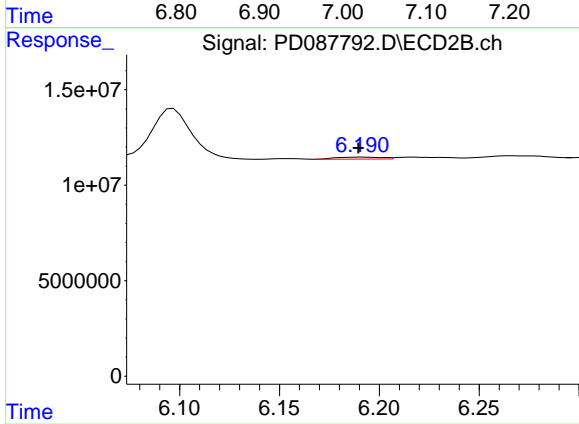
#16 4,4'-DDD

R.T.: 5.929 min
 Delta R.T.: -0.006 min
 Response: -3236757
 Conc: N.D.



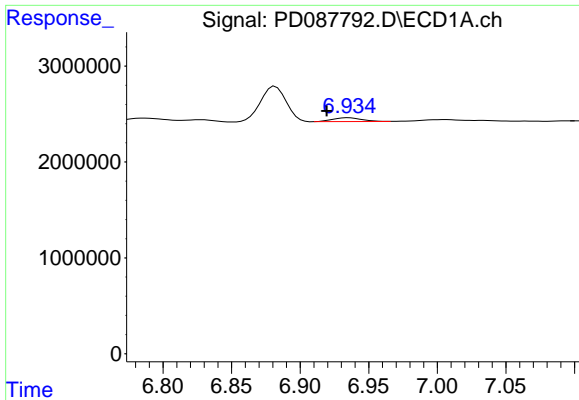
#17 4,4'-DDT

R.T.: 7.005 min
 Delta R.T.: -0.021 min
 Response: 493990
 Conc: 0.19 ng/ml



#17 4,4'-DDT

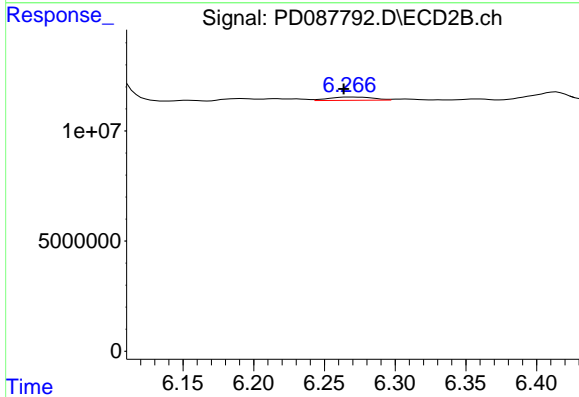
R.T.: 6.192 min
 Delta R.T.: 0.002 min
 Response: 1668806
 Conc: 0.12 ng/ml



#18 Endrin aldehyde

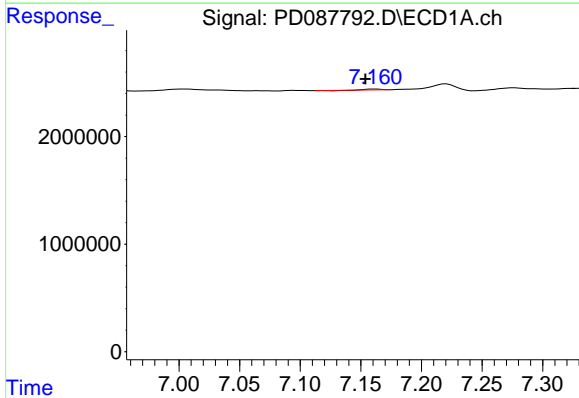
R.T.: 6.935 min
 Delta R.T.: 0.016 min
 Response: 607241
 Conc: 0.26 ng/ml

Instrument :
 ECD_D
 ClientSampleId :



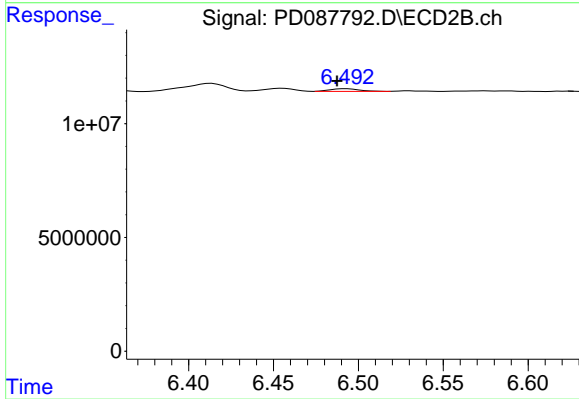
#18 Endrin aldehyde

R.T.: 6.267 min
 Delta R.T.: 0.004 min
 Response: 3273486
 Conc: 0.28 ng/ml



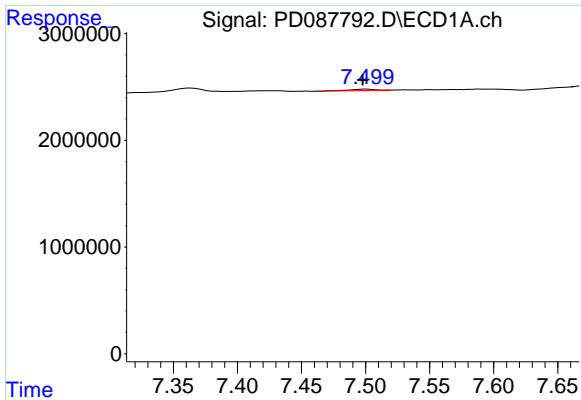
#19 Endosulfan Sulfate

R.T.: 7.161 min
 Delta R.T.: 0.008 min
 Response: 37011
 Conc: 0.01 ng/ml



#19 Endosulfan Sulfate

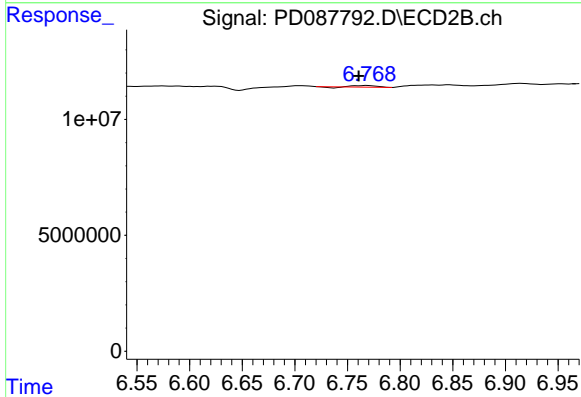
R.T.: 6.493 min
 Delta R.T.: 0.006 min
 Response: 1492151
 Conc: 0.10 ng/ml



#20 Methoxychlor

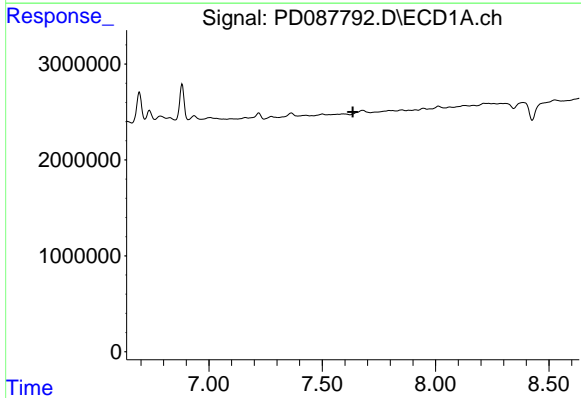
R.T.: 7.501 min
 Delta R.T.: 0.003 min
 Response: 161179
 Conc: 0.11 ng/ml

Instrument :
 ECD_D
 ClientSampleId :



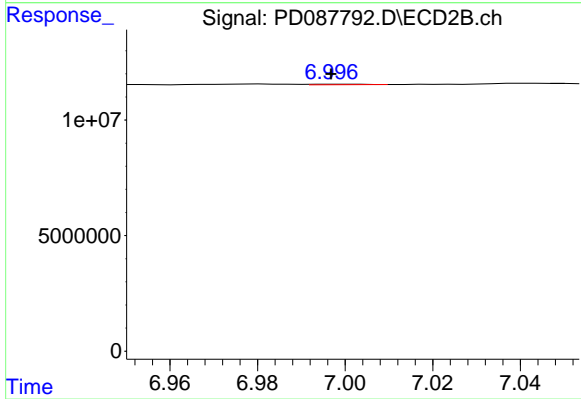
#20 Methoxychlor

R.T.: 6.769 min
 Delta R.T.: 0.009 min
 Response: 915786
 Conc: 0.12 ng/ml



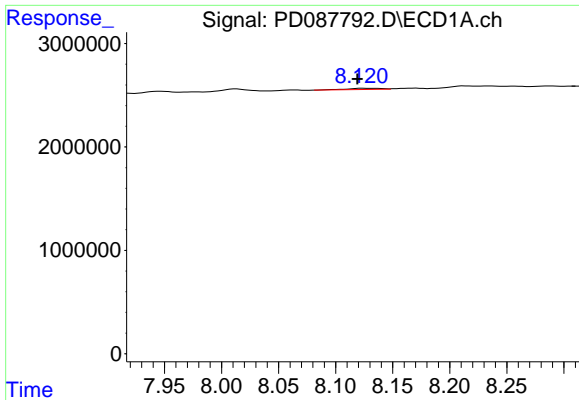
#21 Endrin ketone

R.T.: 0.000 min
 Exp R.T. : 7.634 min
 Response: 0
 Conc: N.D.



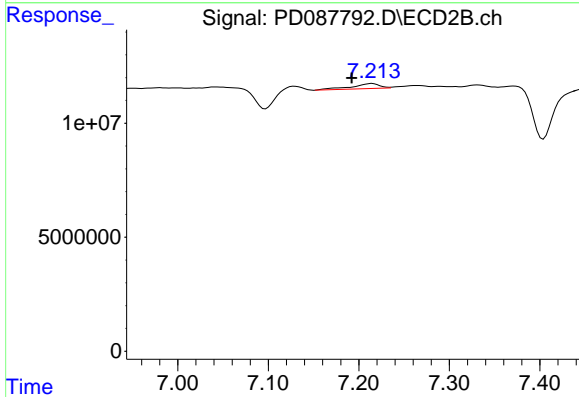
#21 Endrin ketone

R.T.: 6.998 min
 Delta R.T.: 0.000 min
 Response: 190190
 Conc: 0.01 ng/ml

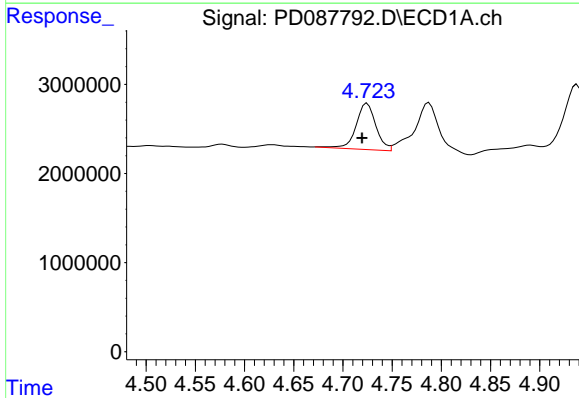


#22 Mirex
 R.T.: 8.124 min
 Delta R.T.: 0.004 min
 Response: 242377
 Conc: 0.10 ng/ml

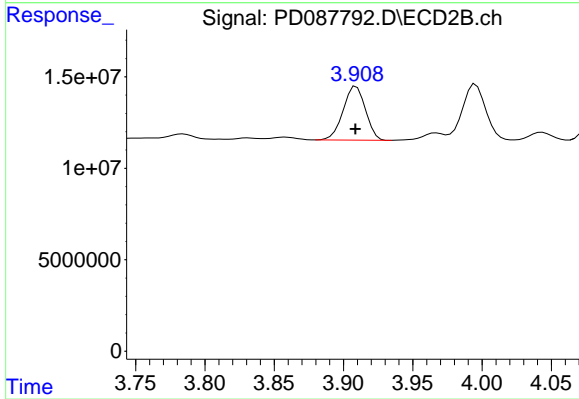
Instrument :
 ECD_D
 ClientSampleId :



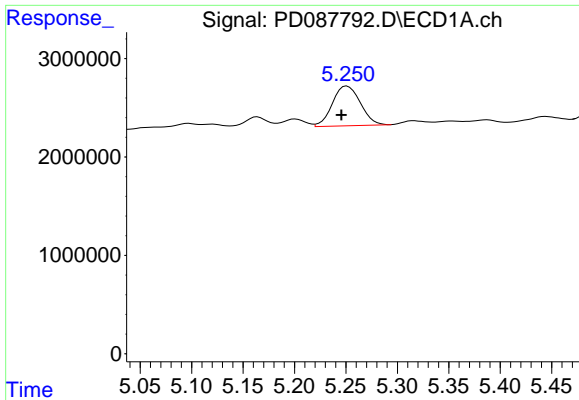
#22 Mirex
 R.T.: 7.215 min
 Delta R.T.: 0.023 min
 Response: 4783844
 Conc: 0.38 ng/ml



#23 Chlordane-1
 R.T.: 4.725 min
 Delta R.T.: 0.005 min
 Response: 7234615
 Conc: 56.58 ng/ml



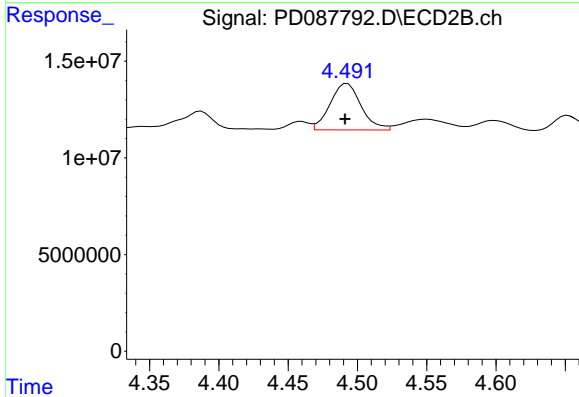
#23 Chlordane-1
 R.T.: 3.909 min
 Delta R.T.: 0.000 min
 Response: 33046777
 Conc: 59.42 ng/ml



#24 Chlordane-2

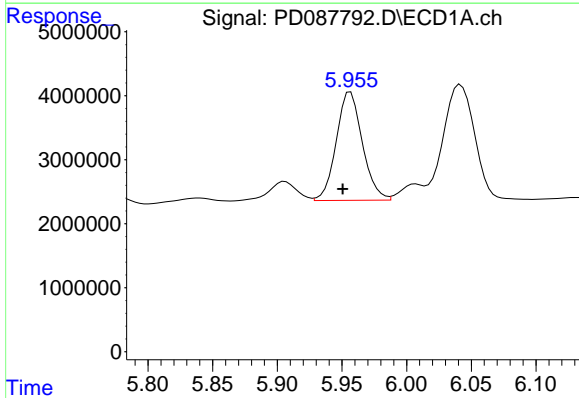
R.T.: 5.251 min
 Delta R.T.: 0.005 min
 Response: 7640946
 Conc: 56.32 ng/ml

Instrument :
 ECD_D
 ClientSampleId :



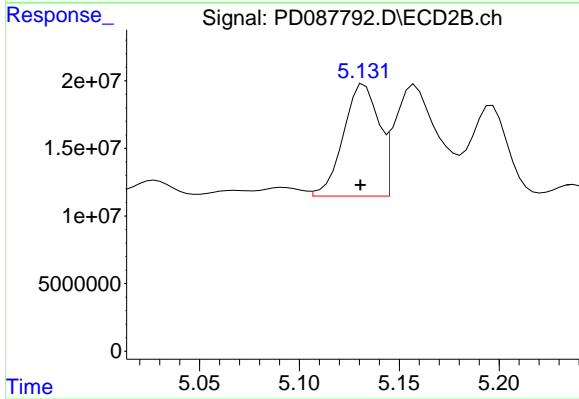
#24 Chlordane-2

R.T.: 4.493 min
 Delta R.T.: 0.002 min
 Response: 37495421
 Conc: 63.45 ng/ml



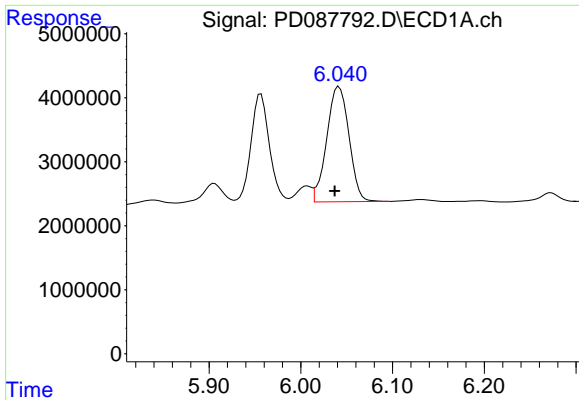
#25 Chlordane-3

R.T.: 5.957 min
 Delta R.T.: 0.006 min
 Response: 23774610
 Conc: 47.29 ng/ml



#25 Chlordane-3

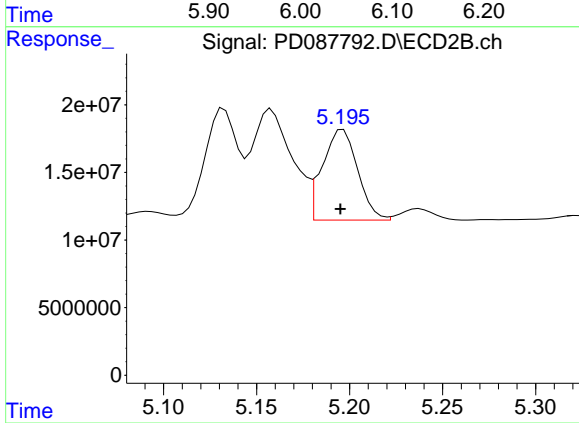
R.T.: 5.133 min
 Delta R.T.: 0.002 min
 Response: 101621497
 Conc: 58.22 ng/ml



#26 Chlordane-4

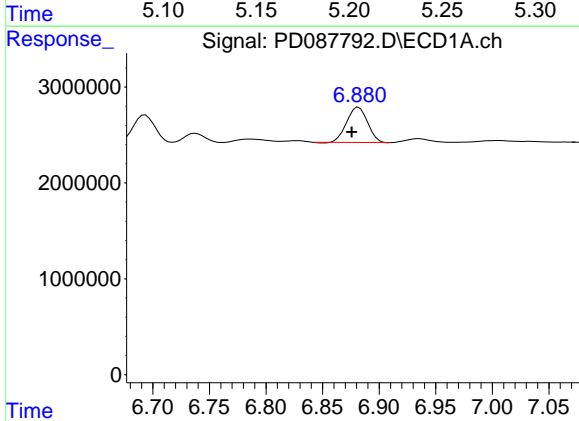
R.T.: 6.042 min
 Delta R.T.: 0.005 min
 Response: 30388648
 Conc: 50.00 ng/ml

Instrument :
 ECD_D
 ClientSampleId :



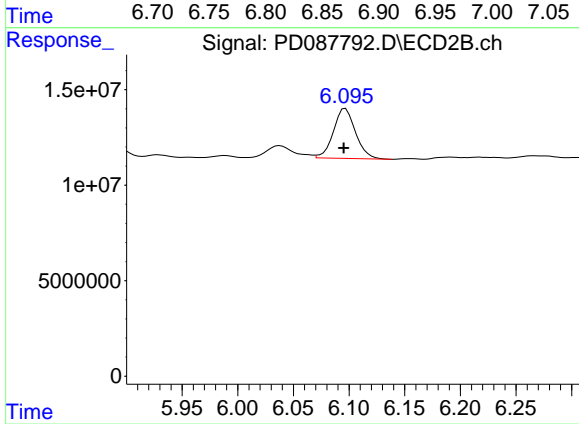
#26 Chlordane-4

R.T.: 5.197 min
 Delta R.T.: 0.001 min
 Response: 88162551
 Conc: 59.75 ng/ml



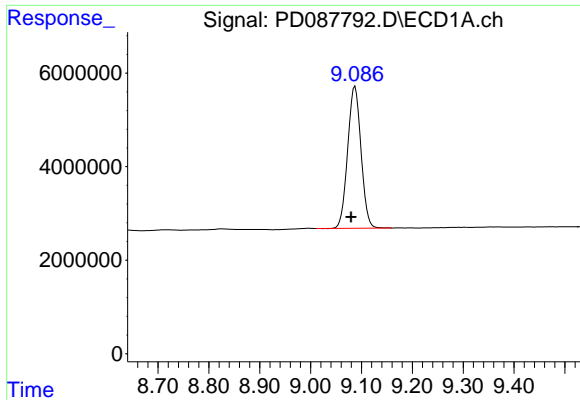
#27 Chlordane-5

R.T.: 6.882 min
 Delta R.T.: 0.006 min
 Response: 4730262
 Conc: 44.31 ng/ml



#27 Chlordane-5

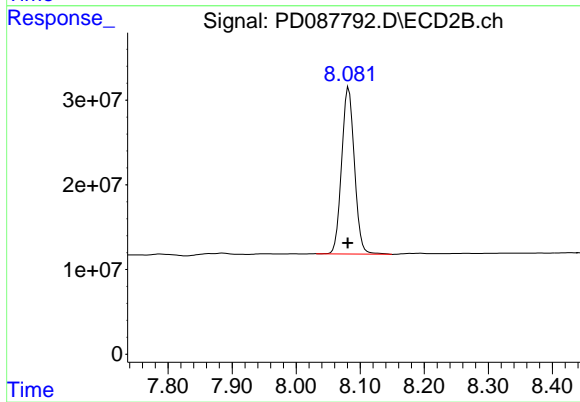
R.T.: 6.097 min
 Delta R.T.: 0.002 min
 Response: 36136398
 Conc: 55.19 ng/ml



#28 Decachlorobiphenyl

R.T.: 9.087 min
Delta R.T.: 0.008 min
Response: 55223677
Conc: 18.11 ng/ml

Instrument :
ECD_D
ClientSampleId :



#28 Decachlorobiphenyl

R.T.: 8.082 min
Delta R.T.: 0.002 min
Response: 272444627
Conc: 19.28 ng/ml