

Data Path : Z:\pestpcbsrv\HPCHEM1\ECD_D\Data\PD020819\
 Data File : PD051266.D
 Signal(s) : Signal #1: ECD1A.CH Signal #2: ECD2B.CH
 Acq On : 08 Feb 2019 16:16
 Operator : AJ\SJ
 Sample : K1422-01
 Misc :
 ALS Vial : 17 Sample Multiplier: 1

Instrument :
 ECD_D
 ClientSampleId :
 TEST-PIT-1

Integration File signal 1: autoint1.e
 Integration File signal 2: autoint2.e
 Quant Time: Feb 09 00:52:07 2019
 Quant Method : Z:\pestpcbsrv\HPCHEM1\ECD_D\Method\PD020819.M
 Quant Title : GC Extractables
 QLast Update : Sat Feb 09 00:01:26 2019
 Response via : Initial Calibration
 Integrator: ChemStation 6890 Scale Mode: Large solvent peaks clipped

Volume Inj. : 2 µl
 Signal #1 Phase : ZB-MR2 Signal #2 Phase: ZB-MR1
 Signal #1 Info : 30M x 0.32mm x0.2 Signal #2 Info : 30M x 0.32mm x 0.50µm

Compound	RT#1	RT#2	Resp#1	Resp#2	ng/ml	ng/ml

System Monitoring Compounds						
1) SA Tetrachlo...	3.225	4.045	20426125	398.8E6	14.771	13.703
28) SA Decachlor...	7.828	9.158	11727722	178.6E6	10.215	10.113

Target Compounds

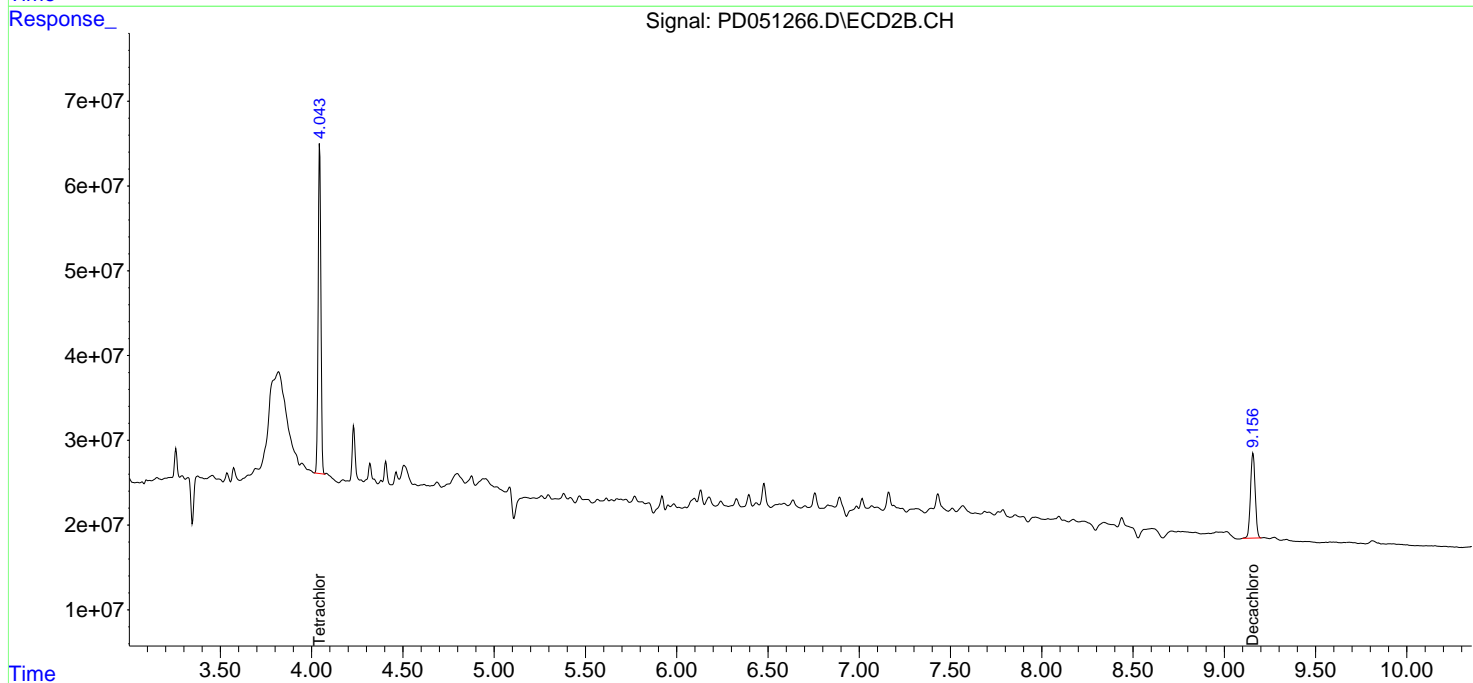
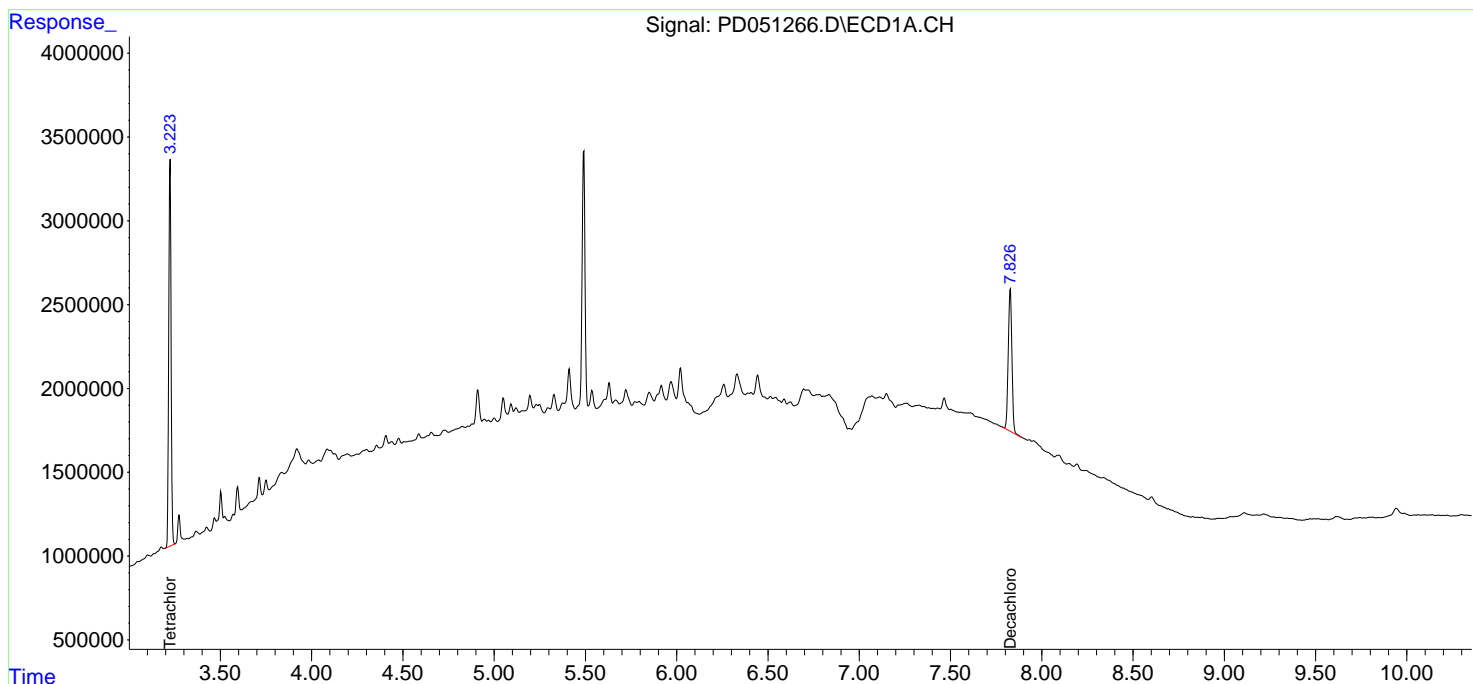
(f)=RT Delta > 1/2 Window (#)=Amounts differ by > 25% (m)=manual int.

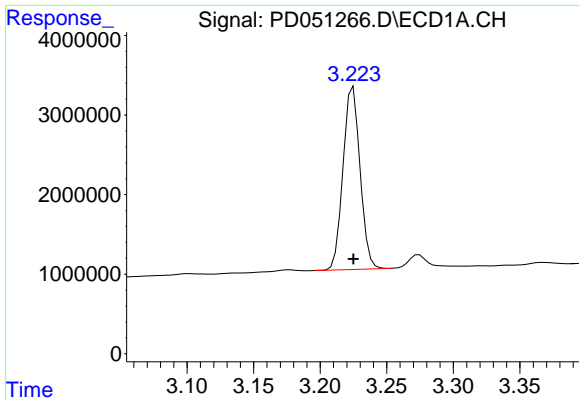
Data Path : Z:\pestpcbsrv\HPCHEM1\ECD_D\Data\PD020819\
 Data File : PD051266.D
 Signal(s) : Signal #1: ECD1A.CH Signal #2: ECD2B.CH
 Acq On : 08 Feb 2019 16:16
 Operator : AJ\SJ
 Sample : K1422-01
 Misc :
 ALS Vial : 17 Sample Multiplier: 1

Instrument :
 ECD_D
 ClientSampled :
 TEST-PIT-1

Integration File signal 1: autoint1.e
 Integration File signal 2: autoint2.e
 Quant Time: Feb 09 00:52:07 2019
 Quant Method : Z:\pestpcbsrv\HPCHEM1\ECD_D\Method\PD020819.M
 Quant Title : GC Extractables
 QLast Update : Sat Feb 09 00:01:26 2019
 Response via : Initial Calibration
 Integrator: ChemStation 6890 Scale Mode: Large solvent peaks clipped

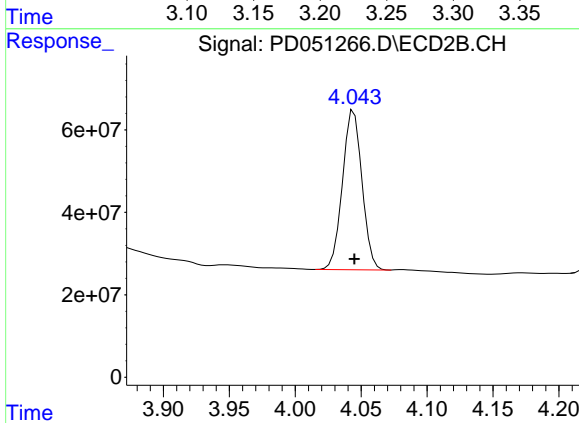
Volume Inj. : 2 µl
 Signal #1 Phase : ZB-MR2 Signal #2 Phase: ZB-MR1
 Signal #1 Info : 30M x 0.32mm x0.2 Signal #2 Info : 30M x 0.32mm x 0.50µm



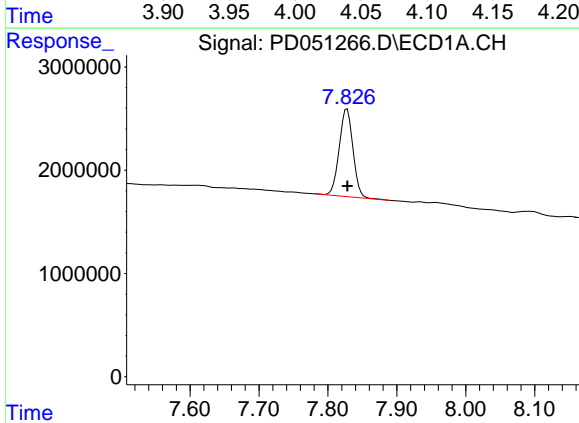


#1 Tetrachloro-m-xylene
 R.T.: 3.225 min
 Delta R.T.: 0.000 min
 Response: 20426125
 Conc: 14.77 ng/ml

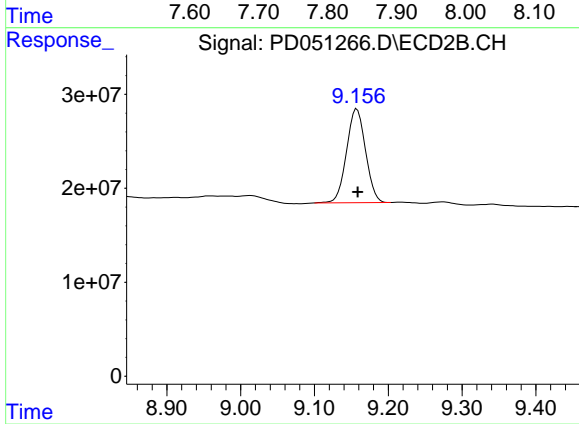
Instrument :
 ECD_D
 ClientSampled :
 TEST-PIT-1



#1 Tetrachloro-m-xylene
 R.T.: 4.045 min
 Delta R.T.: 0.000 min
 Response: 398765549
 Conc: 13.70 ng/ml



#28 Decachlorobiphenyl
 R.T.: 7.828 min
 Delta R.T.: 0.000 min
 Response: 11727722
 Conc: 10.21 ng/ml



#28 Decachlorobiphenyl
 R.T.: 9.158 min
 Delta R.T.: -0.001 min
 Response: 178617693
 Conc: 10.11 ng/ml