

Data Path : Z:\pestpcbsrv\HPCHEM1\ECD_D\Data\PD020921\
 Data File : PD061165.D
 Signal(s) : Signal #1: ECD1A.ch Signal #2: ECD2B.ch
 Acq On : 09 Feb 2021 19:34
 Operator : DD\AJ
 Sample : PCHLORICV500
 Misc :
 ALS Vial : 21 Sample Multiplier: 1

Instrument :
 ECD_D
 ClientSampleId :
 ICVPD020921

Integration File signal 1: autoint1.e
 Integration File signal 2: autoint2.e
 Quant Time: Feb 10 03:02:47 2021
 Quant Method : Z:\pestpcbsrv\HPCHEM1\ECD_D\Method\PD020921.M
 Quant Title : GC Extractables
 QLast Update : Wed Feb 10 03:01:42 2021
 Response via : Initial Calibration
 Integrator: ChemStation

Volume Inj. : 2 µl
 Signal #1 Phase : ZB-MR2 Signal #2 Phase: ZB-MR1
 Signal #1 Info : 30M x 0.32mm x0.2 Signal #2 Info : 30M x 0.32mm x 0.50µm

	Compound	RT#1	RT#2	Resp#1	Resp#2	ng/ml	ng/ml

System Monitoring Compounds							
1)	SA Tetrachlo...	3.494	4.020	65065608	352.1E6	47.208	46.808
28)	SA Decachlor...	8.274	9.104	65119212	330.4E6	48.391	45.977
Target Compounds							
23)	Chlordane-1	4.372	5.018	20954055	147.8E6	464.053	481.517
24)	Chlordane-2	4.876	5.487	22171777	140.6E6	482.988	457.355
25)	Chlordane-3	5.449	6.135	70626371	587.9E6	479.935	467.250
26)	Chlordane-4	5.508	6.210	57297323	680.4E6	480.330	464.195
27)	Chlordane-5	6.348	7.016	24516639	122.1E6	461.915	449.890

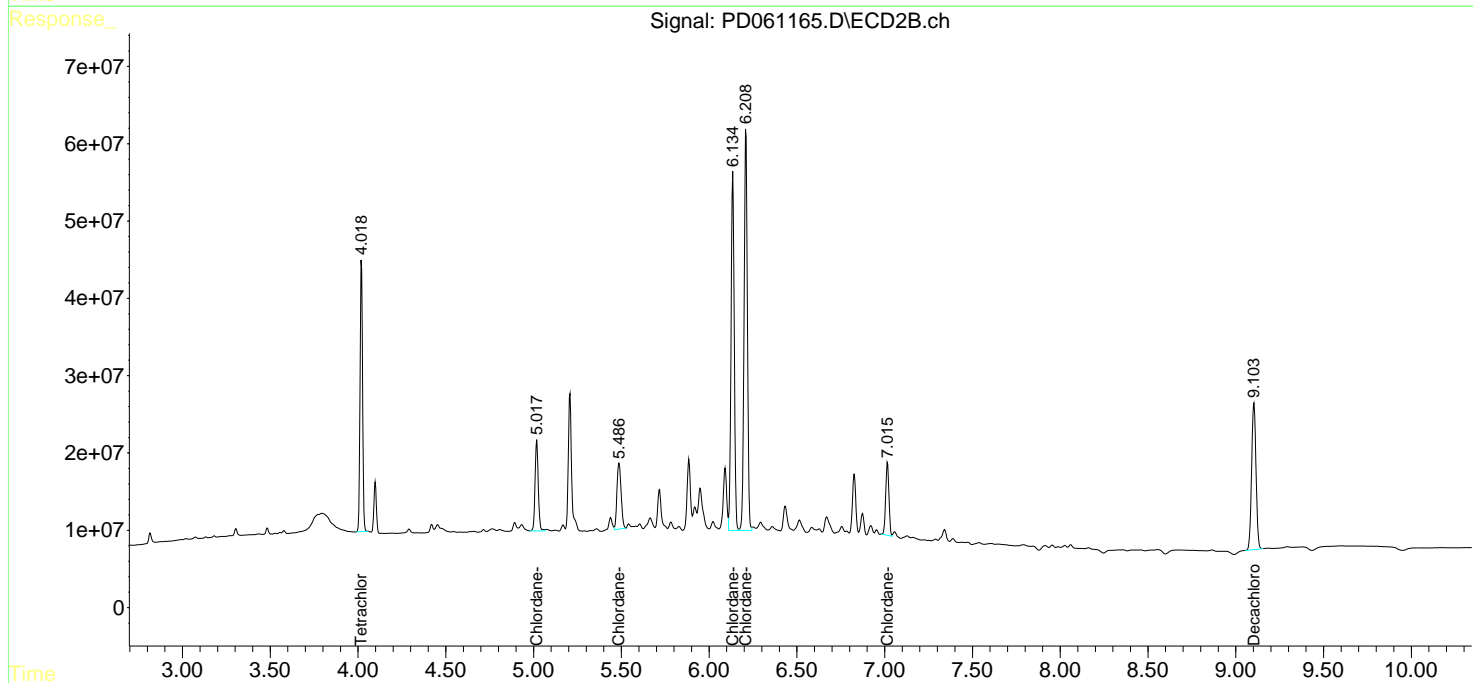
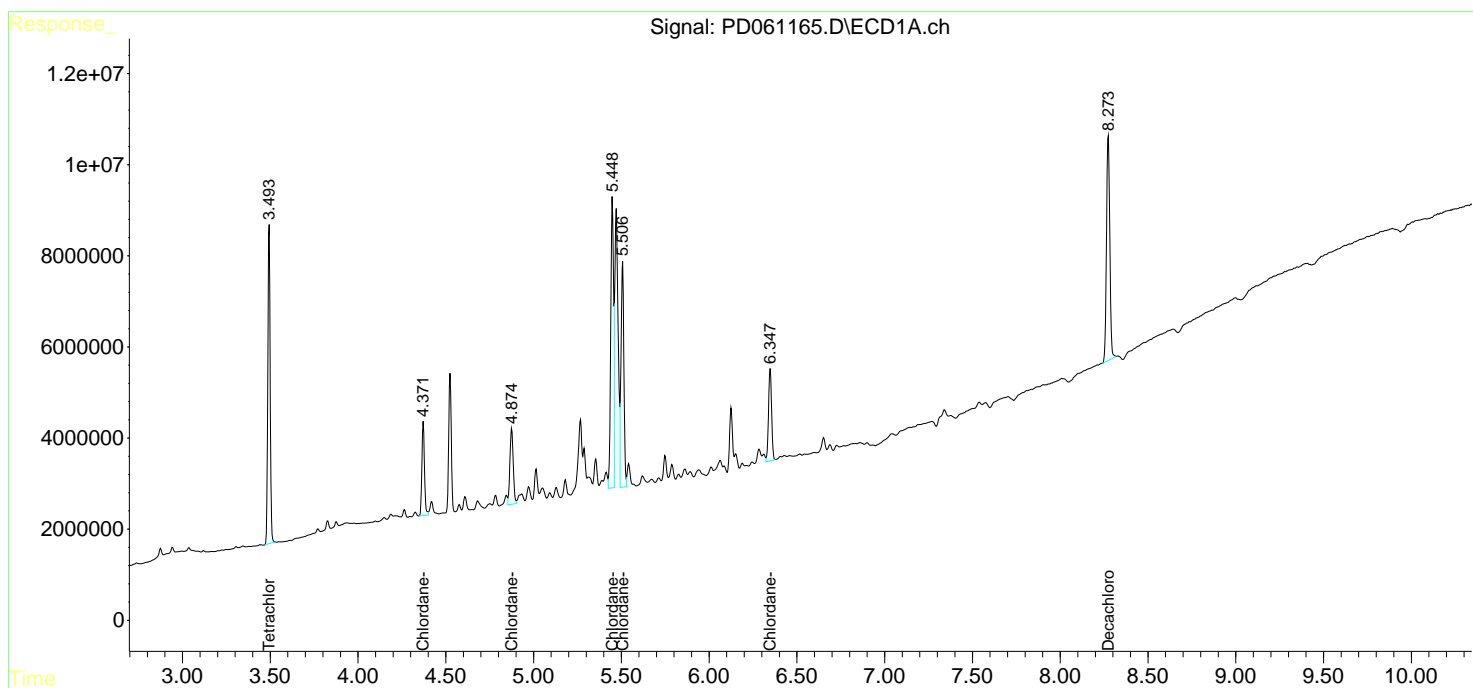
(f)=RT Delta > 1/2 Window (#)=Amounts differ by > 25% (m)=manual int.

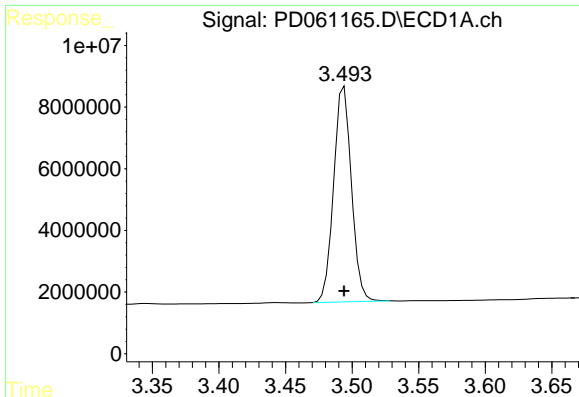
Data Path : Z:\pestpcbsrv\HPCHEM1\ECD_D\Data\PD020921\
 Data File : PD061165.D
 Signal(s) : Signal #1: ECD1A.ch Signal #2: ECD2B.ch
 Acq On : 09 Feb 2021 19:34
 Operator : DD\AJ
 Sample : PCHLORICV500
 Misc :
 ALS Vial : 21 Sample Multiplier: 1

Instrument :
 ECD_D
 ClientSampled :
 ICVPD020921

Integration File signal 1: autoint1.e
 Integration File signal 2: autoint2.e
 Quant Time: Feb 10 03:02:47 2021
 Quant Method : Z:\pestpcbsrv\HPCHEM1\ECD_D\Method\PD020921.M
 Quant Title : GC Extractables
 QLast Update : Wed Feb 10 03:01:42 2021
 Response via : Initial Calibration
 Integrator: ChemStation

Volume Inj. : 2 µl
 Signal #1 Phase : ZB-MR2 Signal #2 Phase: ZB-MR1
 Signal #1 Info : 30M x 0.32mm x0.2 Signal #2 Info : 30M x 0.32mm x 0.50µm

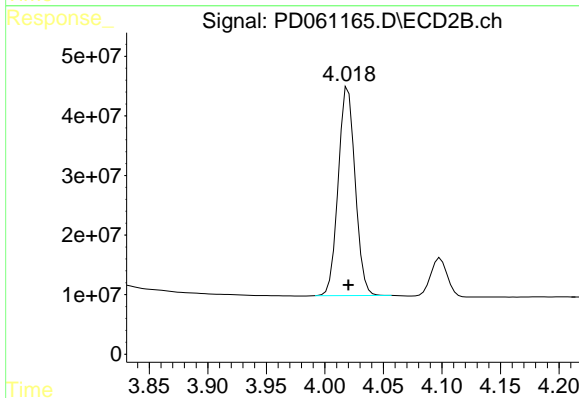




#1 Tetrachloro-m-xylene

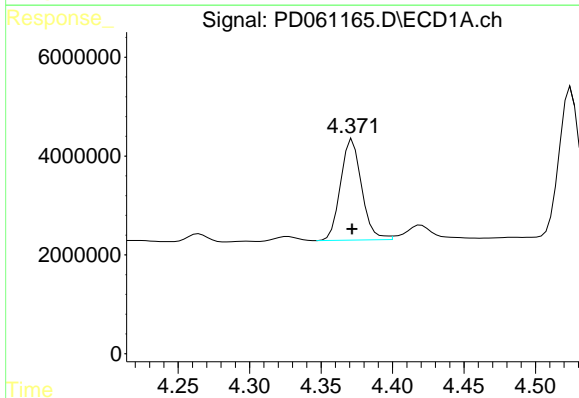
R.T.: 3.494 min
 Delta R.T.: 0.000 min
 Response: 65065608
 Conc: 47.21 ng/ml

Instrument :
 ECD_D
 ClientSampled :
 ICVPD020921



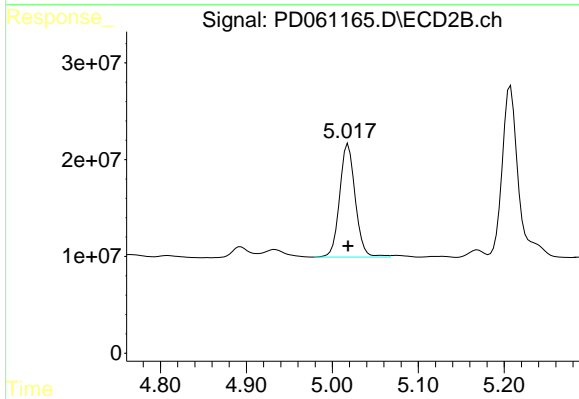
#1 Tetrachloro-m-xylene

R.T.: 4.020 min
 Delta R.T.: 0.000 min
 Response: 352050708
 Conc: 46.81 ng/ml



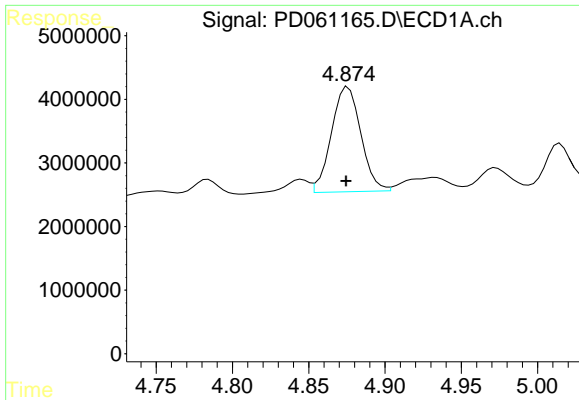
#23 Chlordane-1

R.T.: 4.372 min
 Delta R.T.: 0.000 min
 Response: 20954055
 Conc: 464.05 ng/ml



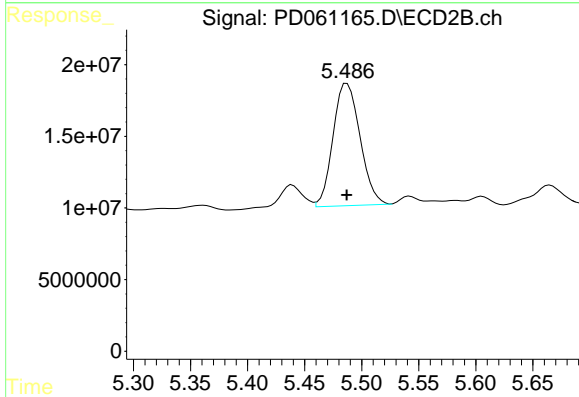
#23 Chlordane-1

R.T.: 5.018 min
 Delta R.T.: 0.000 min
 Response: 147783514
 Conc: 481.52 ng/ml

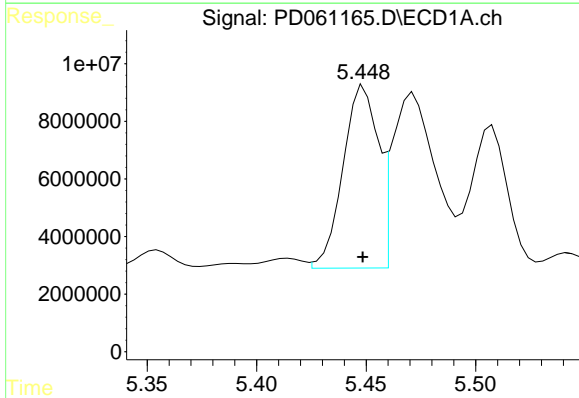


#24 Chlordane-2
 R.T.: 4.876 min
 Delta R.T.: 0.001 min
 Response: 22171777
 Conc: 482.99 ng/ml

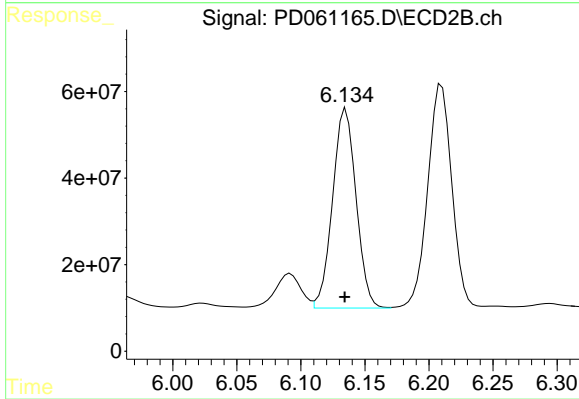
Instrument :
 ECD_D
ClientSampled :
 ICVPD020921



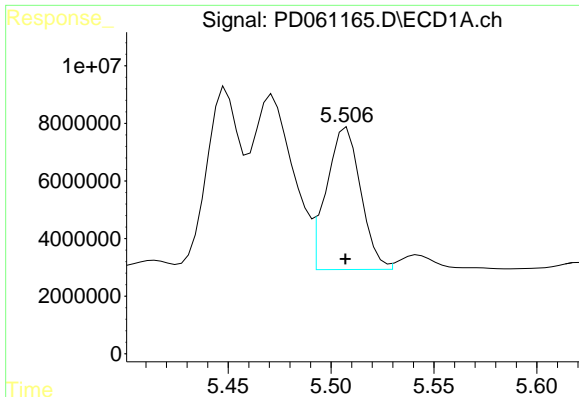
#24 Chlordane-2
 R.T.: 5.487 min
 Delta R.T.: 0.000 min
 Response: 140569043
 Conc: 457.36 ng/ml



#25 Chlordane-3
 R.T.: 5.449 min
 Delta R.T.: 0.000 min
 Response: 70626371
 Conc: 479.93 ng/ml



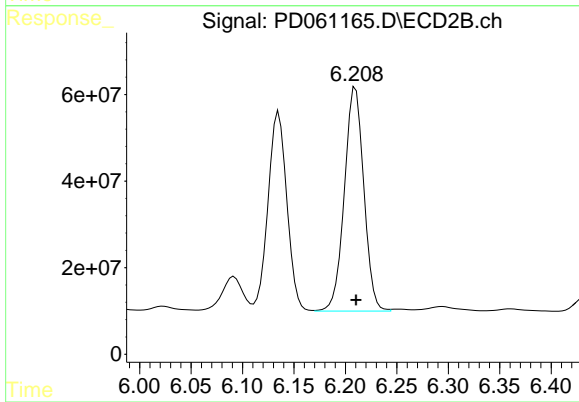
#25 Chlordane-3
 R.T.: 6.135 min
 Delta R.T.: 0.000 min
 Response: 587938128
 Conc: 467.25 ng/ml



#26 Chlordane-4

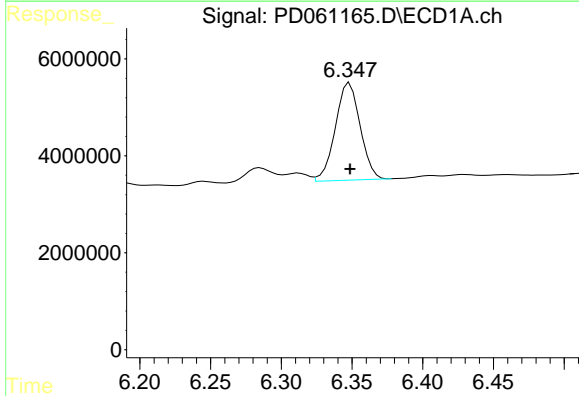
R.T.: 5.508 min
 Delta R.T.: 0.000 min
 Response: 57297323
 Conc: 480.33 ng/ml

Instrument :
 ECD_D
 ClientSampleId :
 ICPD020921



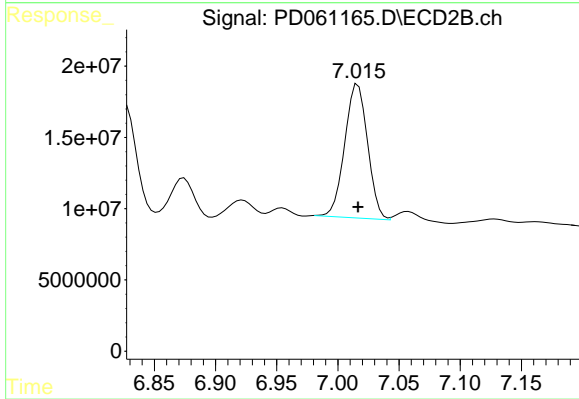
#26 Chlordane-4

R.T.: 6.210 min
 Delta R.T.: 0.000 min
 Response: 680380865
 Conc: 464.20 ng/ml



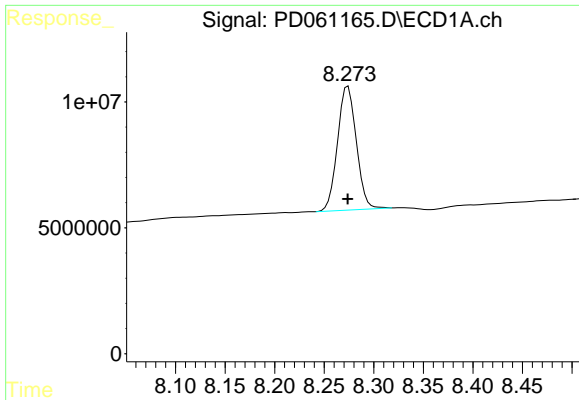
#27 Chlordane-5

R.T.: 6.348 min
 Delta R.T.: 0.000 min
 Response: 24516639
 Conc: 461.92 ng/ml



#27 Chlordane-5

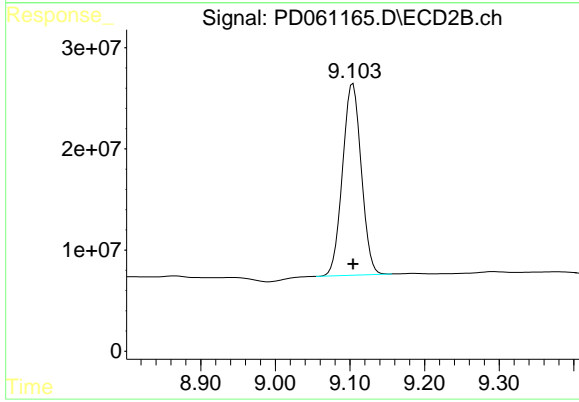
R.T.: 7.016 min
 Delta R.T.: 0.000 min
 Response: 122127755
 Conc: 449.89 ng/ml



#28 Decachlorobiphenyl

R.T.: 8.274 min
Delta R.T.: 0.000 min
Response: 65119212
Conc: 48.39 ng/ml

Instrument :
ECD_D
ClientSampleId :
ICVPD020921



#28 Decachlorobiphenyl

R.T.: 9.104 min
Delta R.T.: 0.000 min
Response: 330439232
Conc: 45.98 ng/ml