

Data Path : Z:\pestpcbsrv\HPCHEM1\ECD_D\Data\PD021020\
 Data File : PD057144.D
 Signal(s) : Signal #1: ECD1A.ch Signal #2: ECD2B.ch
 Acq On : 10 Feb 2020 13:33
 Operator : AJ\MA
 Sample : PEM17
 Misc :
 ALS Vial : 3 Sample Multiplier: 1

Instrument :
 ECD_D
 ClientSampleId :
 PEM17

Integration File signal 1: autoint1.e
 Integration File signal 2: autoint2.e
 Quant Time: Feb 11 05:35:54 2020
 Quant Method : Z:\pestpcbsrv\HPCHEM1\ECD_D\Method\PD021020CLP.M
 Quant Title : GC Extractables
 QLast Update : Tue Feb 11 04:58:40 2020
 Response via : Initial Calibration
 Integrator: ChemStation

Volume Inj. : 1 µl
 Signal #1 Phase : ZB-MR2 Signal #2 Phase: ZB-MR1
 Signal #1 Info : 30M x 0.32mm x0.2 Signal #2 Info : 30M x 0.32mm x 0.50µm

Compound	RT#1	RT#2	Resp#1	Resp#2	ng/ml	ng/ml

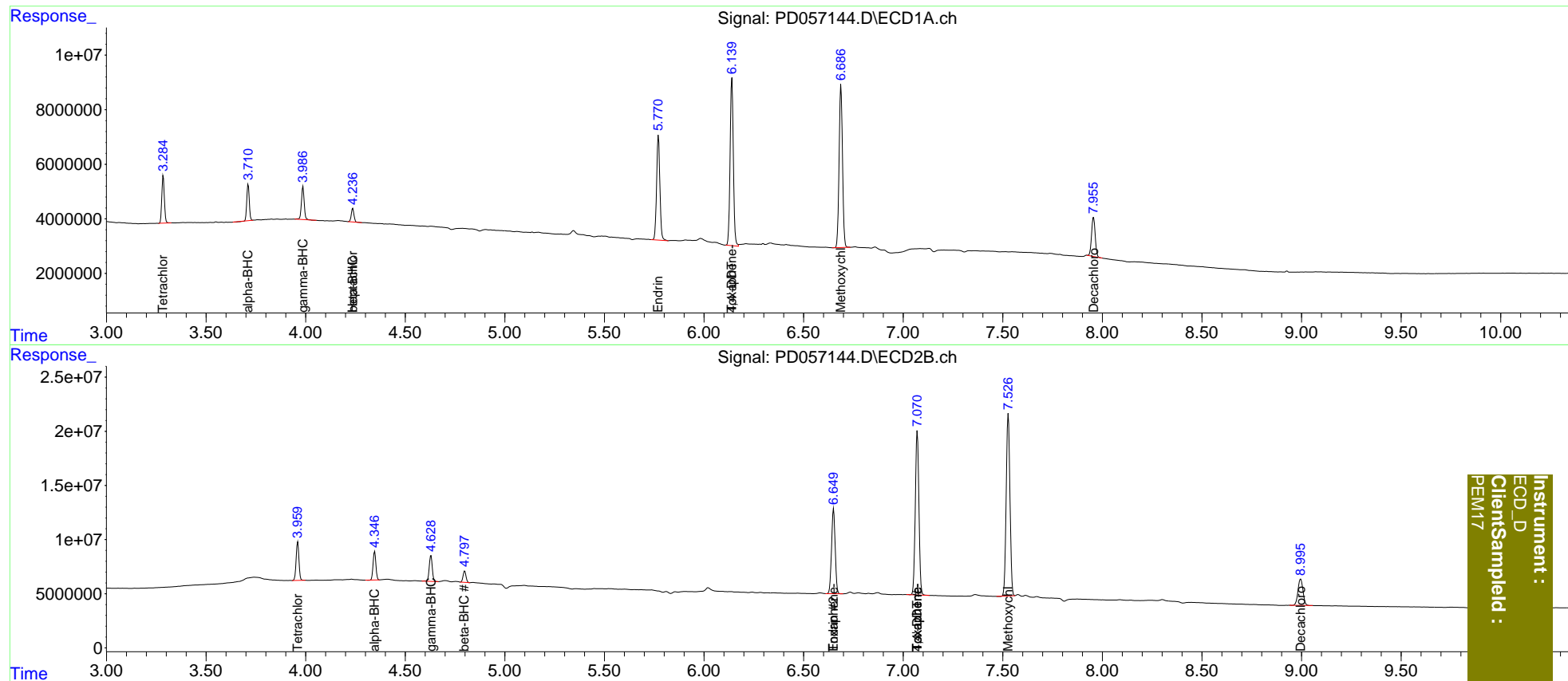
System Monitoring Compounds						
1) SA Tetrachlo...	3.285	3.960	15363980	34619014	18.495	18.577
27) SA Decachlor...	7.956	8.996	18170006	42431522	17.514	18.770
Target Compounds						
2) A alpha-BHC	3.712	4.347	11374481	25571978	8.829	9.007
3) MA gamma-BHC...	3.987	4.629	11675534	25475784	9.207	8.991
4) MA Heptachlor	4.237f	0.000	4712855	0	6.161	N.D. #
6) B beta-BHC	4.237	4.799	4712855	10846297	9.437	9.356
14) MA Endrin	5.771	6.651	44075982	99981223	50.156	47.512
17) MA 4,4'-DDT	6.140	7.071	69159026	191.0E6	106.280	100.597
20) A Methoxychlor	6.688	7.528	70886217	220.4E6	253.191	244.320
23) Toxaphene-2	0.000	6.651	0	99981223	N.D.	6078.996
24) Toxaphene-3	0.000	7.071	0	191.0E6	N.D.	9443.825
25) Toxaphene-4	6.140	7.071	69159026	191.0E6	4234.379	3181.553

(f)=RT Delta > 1/2 Window (#)=Amounts differ by > 25% (m)=manual int.

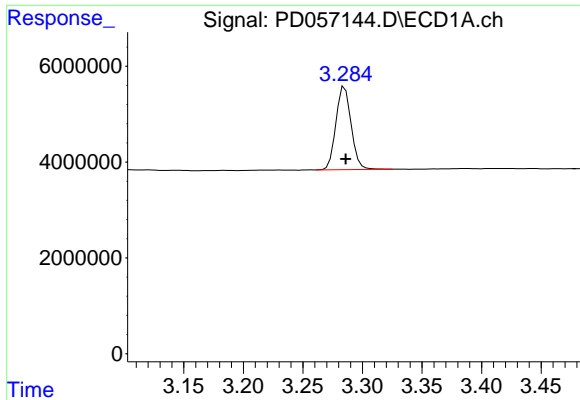
Data Path : Z:\pestpcbsrv\HPCHEM1\ECD_D\Data\PD021020\
 Data File : PD057144.D
 Signal(s) : Signal #1: ECD1A.ch Signal #2: ECD2B.ch
 Acq On : 10 Feb 2020 13:33
 Operator : AJ\MA
 Sample : PEM17
 Misc :
 ALS Vial : 3 Sample Multiplier: 1

Integration File signal 1: autoint1.e
 Integration File signal 2: autoint2.e
 Quant Time: Feb 11 05:35:54 2020
 Quant Method : Z:\pestpcbsrv\HPCHEM1\ECD_D\Method\PD021020CLP.M
 Quant Title : GC Extractables
 QLast Update : Tue Feb 11 04:58:40 2020
 Response via : Initial Calibration
 Integrator: ChemStation

Volume Inj. : 1 µl
 Signal #1 Phase : ZB-MR2 Signal #2 Phase: ZB-MR1
 Signal #1 Info : 30M x 0.32mm x0.2 Signal #2 Info : 30M x 0.32mm x 0.50µm



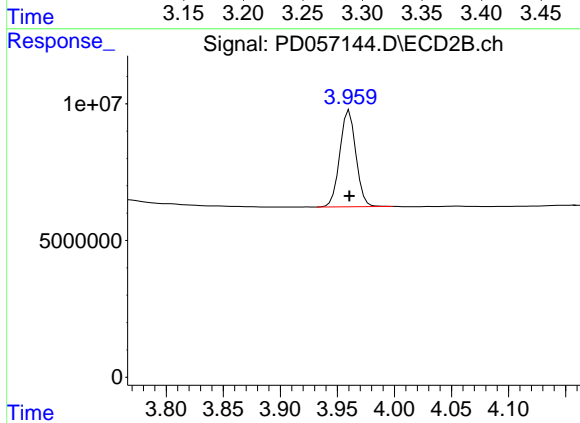
Instrument :
 ECD_D
 ClientSampleId :
 PEM17



#1 Tetrachloro-m-xylene

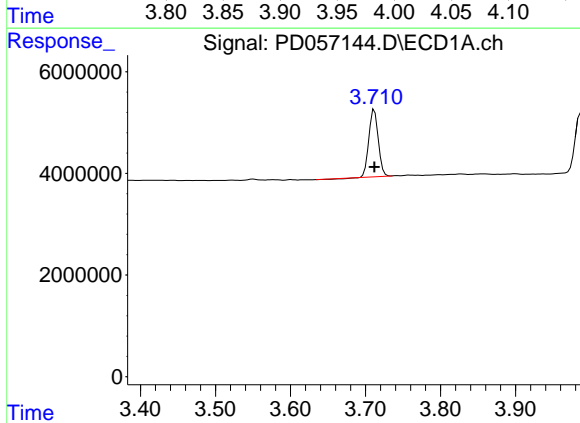
R.T.: 3.285 min
 Delta R.T.: 0.000 min
 Response: 15363980
 Conc: 18.50 ng/ml

Instrument :
 ECD_D
 ClientSampleId :
 PEM17



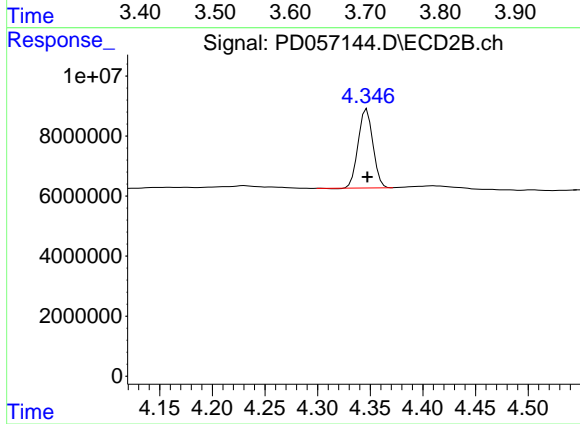
#1 Tetrachloro-m-xylene

R.T.: 3.960 min
 Delta R.T.: 0.000 min
 Response: 34619014
 Conc: 18.58 ng/ml



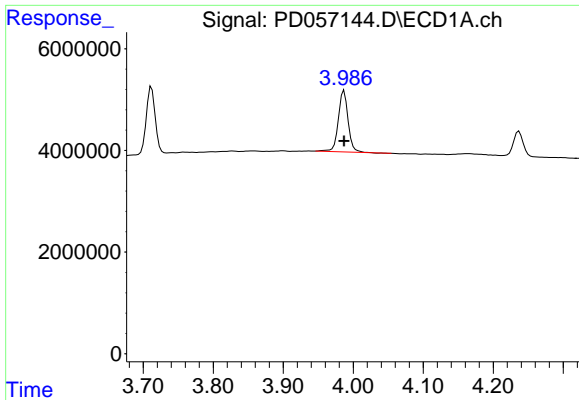
#2 alpha-BHC

R.T.: 3.712 min
 Delta R.T.: 0.000 min
 Response: 11374481
 Conc: 8.83 ng/ml



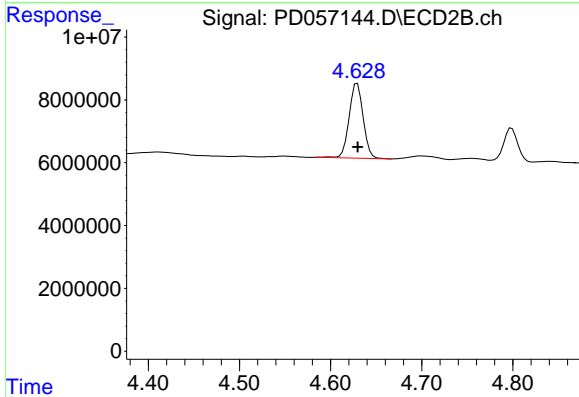
#2 alpha-BHC

R.T.: 4.347 min
 Delta R.T.: 0.000 min
 Response: 25571978
 Conc: 9.01 ng/ml

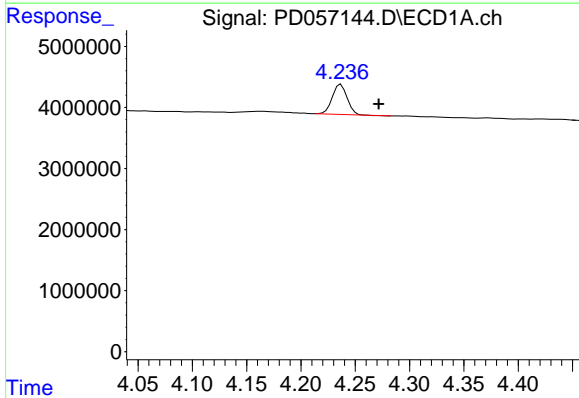


#3 gamma-BHC (Lindane)
 R.T.: 3.987 min
 Delta R.T.: 0.000 min
 Response: 11675534
 Conc: 9.21 ng/ml

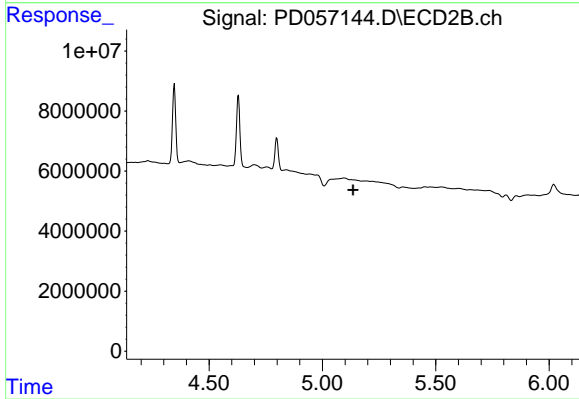
Instrument :
 ECD_D
 ClientSampled :
 PEM17



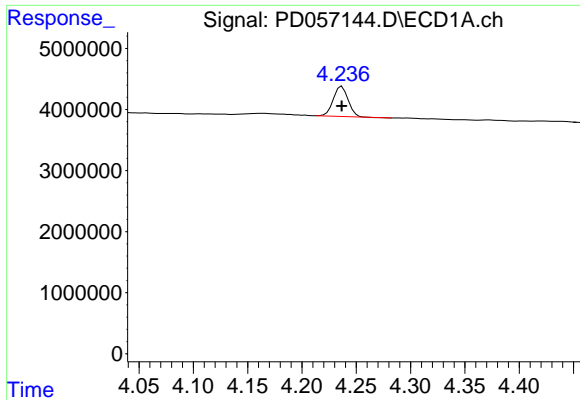
#3 gamma-BHC (Lindane)
 R.T.: 4.629 min
 Delta R.T.: 0.000 min
 Response: 25475784
 Conc: 8.99 ng/ml



#4 Heptachlor
 R.T.: 4.237 min
 Delta R.T.: -0.035 min
 Response: 4712855
 Conc: 6.16 ng/ml

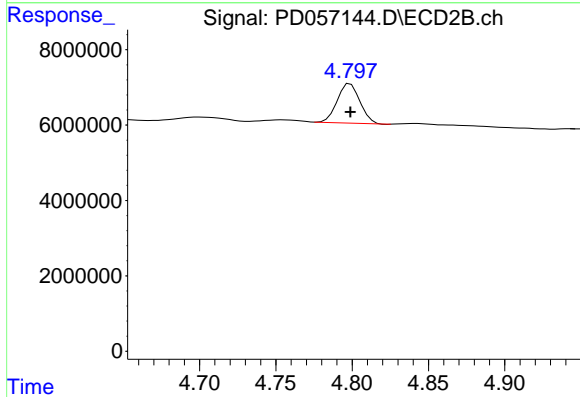


#4 Heptachlor
 R.T.: 0.000 min
 Exp R.T.: 5.135 min
 Response: 0
 Conc: N.D.

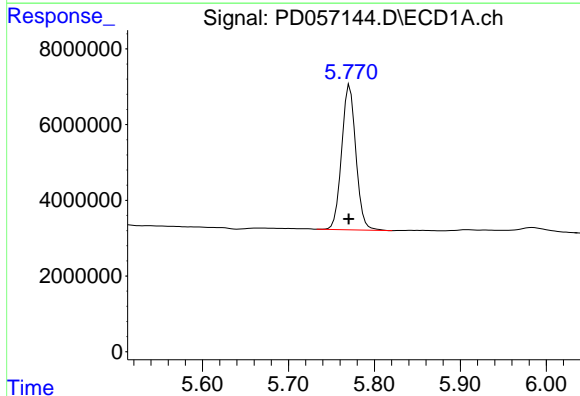


#6 beta-BHC
 R.T.: 4.237 min
 Delta R.T.: 0.000 min
 Response: 4712855
 Conc: 9.44 ng/ml

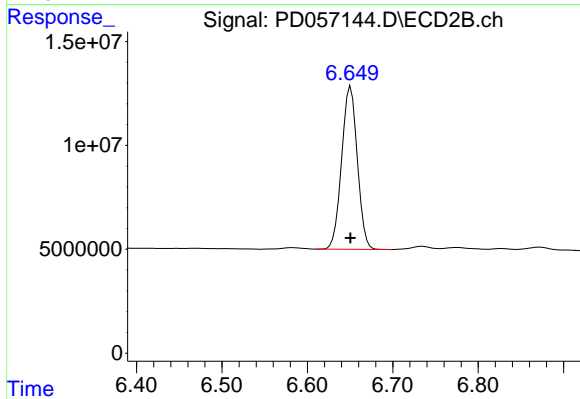
Instrument :
 ECD_D
 ClientSampleId :
 PEM17



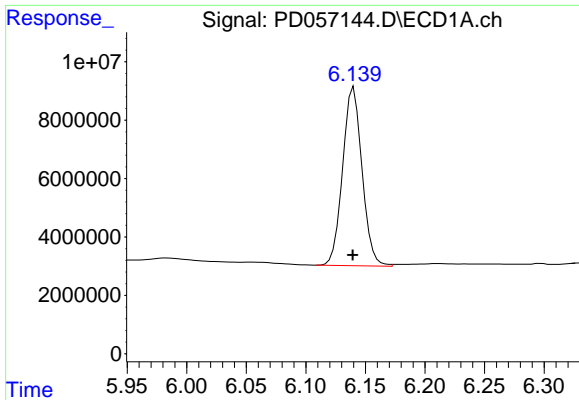
#6 beta-BHC
 R.T.: 4.799 min
 Delta R.T.: 0.000 min
 Response: 10846297
 Conc: 9.36 ng/ml



#14 Endrin
 R.T.: 5.771 min
 Delta R.T.: 0.001 min
 Response: 44075982
 Conc: 50.16 ng/ml



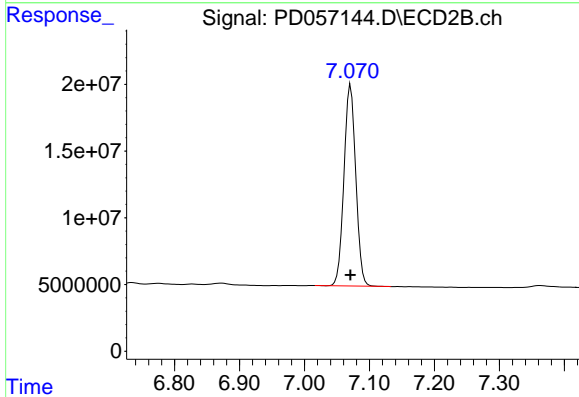
#14 Endrin
 R.T.: 6.651 min
 Delta R.T.: 0.000 min
 Response: 99981223
 Conc: 47.51 ng/ml



#17 4,4'-DDT

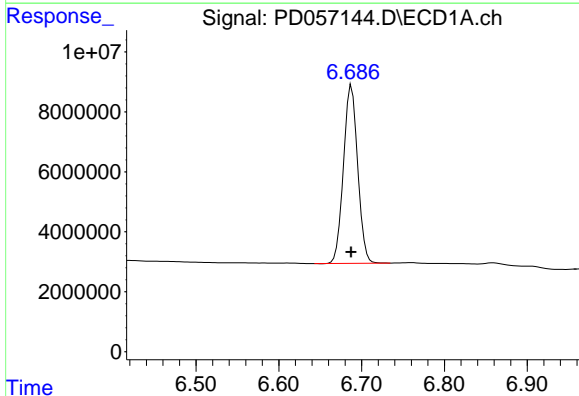
R.T.: 6.140 min
Delta R.T.: 0.000 min
Response: 69159026
Conc: 106.28 ng/ml

Instrument :
ECD_D
ClientSampleId :
PEM17



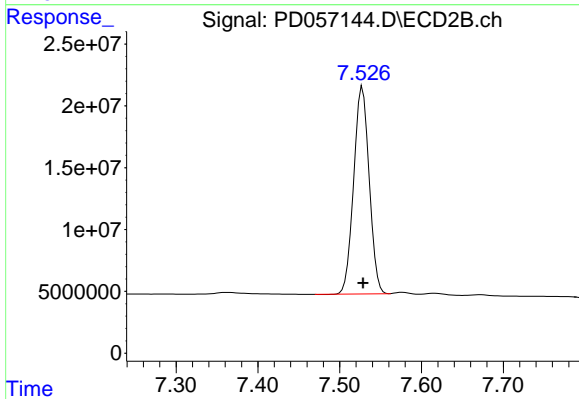
#17 4,4'-DDT

R.T.: 7.071 min
Delta R.T.: 0.000 min
Response: 190995912
Conc: 100.60 ng/ml



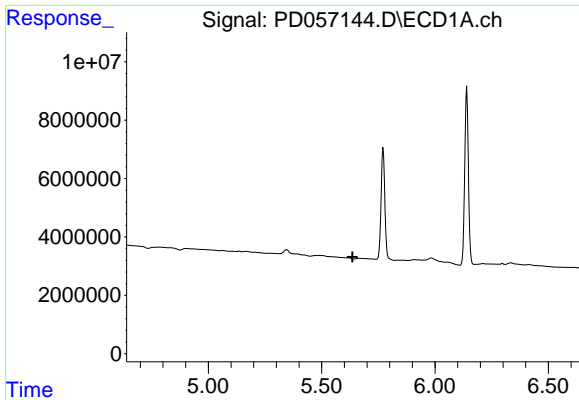
#20 Methoxychlor

R.T.: 6.688 min
Delta R.T.: 0.000 min
Response: 70886217
Conc: 253.19 ng/ml



#20 Methoxychlor

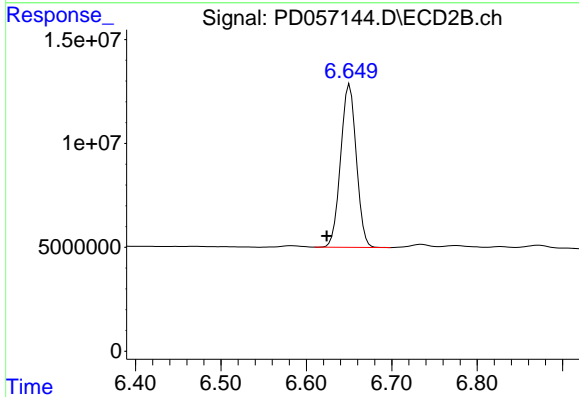
R.T.: 7.528 min
Delta R.T.: 0.000 min
Response: 220419094
Conc: 244.32 ng/ml



#23 Toxaphene-2

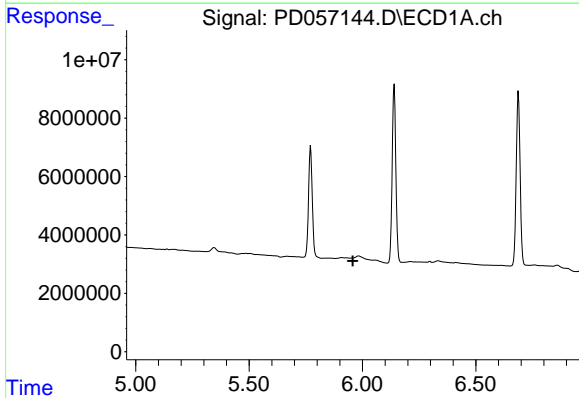
R.T.: 0.000 min
 Exp R.T. : 5.637 min
 Response: 0
 Conc: N.D.

Instrument :
 ECD_D
 ClientSampled :
 PEM17



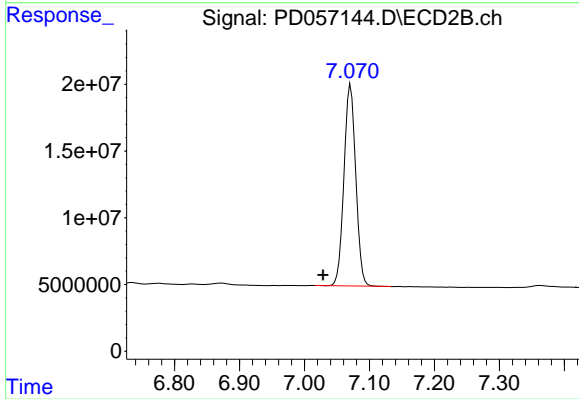
#23 Toxaphene-2

R.T.: 6.651 min
 Delta R.T.: 0.027 min
 Response: 99981223
 Conc: 6079.00 ng/ml



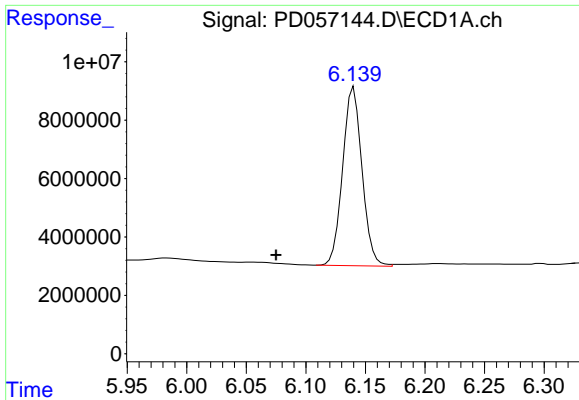
#24 Toxaphene-3

R.T.: 0.000 min
 Exp R.T. : 5.958 min
 Response: 0
 Conc: N.D.



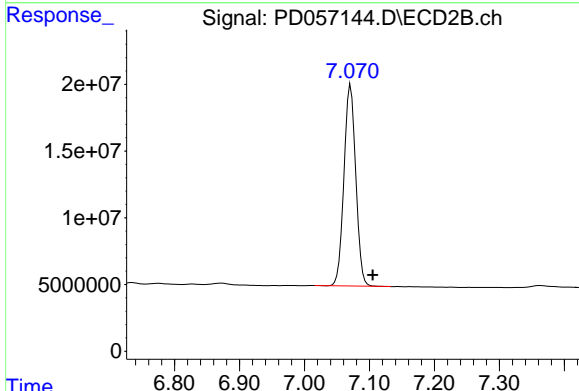
#24 Toxaphene-3

R.T.: 7.071 min
 Delta R.T.: 0.043 min
 Response: 190995912
 Conc: 9443.83 ng/ml

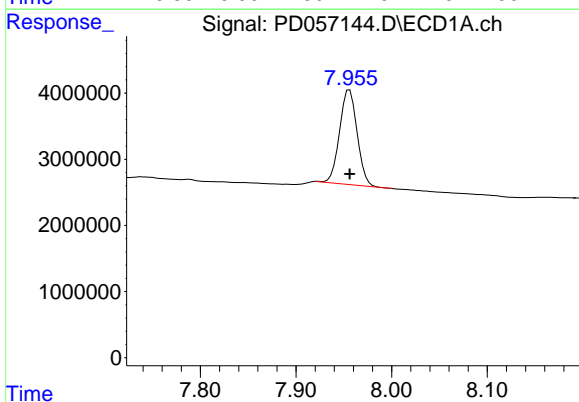


#25 Toxaphene-4
 R.T.: 6.140 min
 Delta R.T.: 0.065 min
 Response: 69159026
 Conc: 4234.38 ng/ml

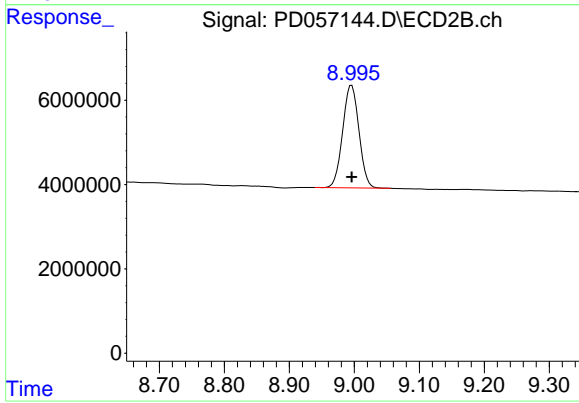
Instrument :
 ECD_D
 ClientSampled :
 PEM17



#25 Toxaphene-4
 R.T.: 7.071 min
 Delta R.T.: -0.034 min
 Response: 190995912
 Conc: 3181.55 ng/ml



#27 Decachlorobiphenyl
 R.T.: 7.956 min
 Delta R.T.: 0.000 min
 Response: 18170006
 Conc: 17.51 ng/ml



#27 Decachlorobiphenyl
 R.T.: 8.996 min
 Delta R.T.: 0.000 min
 Response: 42431522
 Conc: 18.77 ng/ml