

Data Path : Z:\pestpcbsrv\HPCHEM1\ECD\_D\Data\PD021020\  
 Data File : PD057167.D  
 Signal(s) : Signal #1: ECD1A.ch Signal #2: ECD2B.ch  
 Acq On : 10 Feb 2020 18:58  
 Operator : AJ\MA  
 Sample : L1302-06  
 Misc :  
 ALS Vial : 26 Sample Multiplier: 1

Instrument :  
 ECD\_D  
 ClientSampleId :  
 C5AL6

Integration File signal 1: autoint1.e  
 Integration File signal 2: autoint2.e  
 Quant Time: Feb 11 06:32:31 2020  
 Quant Method : Z:\pestpcbsrv\HPCHEM1\ECD\_D\Method\PD021020CLP.M  
 Quant Title : GC Extractables  
 QLast Update : Tue Feb 11 04:58:40 2020  
 Response via : Initial Calibration  
 Integrator: ChemStation

Volume Inj. : 1 µl  
 Signal #1 Phase : ZB-MR2 Signal #2 Phase: ZB-MR1  
 Signal #1 Info : 30M x 0.32mm x 0.2 Signal #2 Info : 30M x 0.32mm x 0.50µm

	Compound	RT#1	RT#2	Resp#1	Resp#2	ng/ml	ng/ml
-----							
System Monitoring Compounds							
1)	SA Tetrachlo...	3.286	3.961	7288404	15619675	8.774	8.382
27)	SA Decachlor...	7.956	8.996	13434388	21693717	12.950	9.596 #
Target Compounds							
9)	A Endosulfan I	5.307	0.000	13074731	0	12.973	N.D. #
10)	B trans-Chl...	0.000	6.045	0	12657849	N.D.	4.630
12)	B 4,4'-DDE	5.341f	6.352f	13666760	42468877	12.360	16.595 #
13)	MA Dieldrin	5.504	0.000	17483931	0	16.611	N.D. #
14)	MA Endrin	5.770	0.000	5887618	0	6.700	N.D. #
16)	A 4,4'-DDD	5.859f	0.000	1271405	0	1.835	N.D. #
20)	A Methoxychlor	6.720	0.000	4735676	0	16.915	N.D. #
21)	B Endrin ke...	6.855f	0.000	16081219	0	17.706	N.D. #
22)	Toxaphene-1	5.504	6.352	17483931	42468877	2901.178	3419.664
23)	Toxaphene-2	5.651	0.000	9712778	0	1696.827	N.D. #
26)	Toxaphene-5	6.855	0.000	16081219	0	921.204	N.D. #
-----							

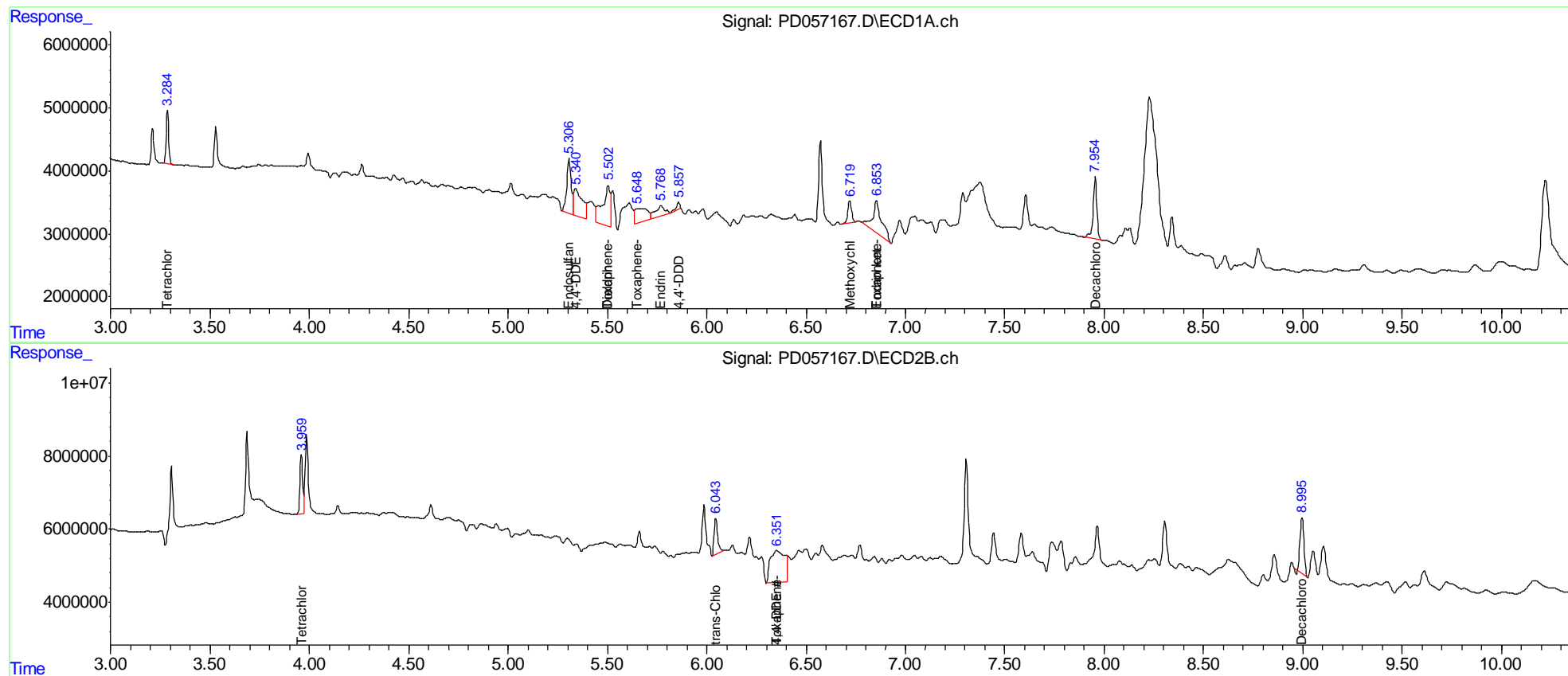
(f)=RT Delta > 1/2 Window (#)=Amounts differ by > 25% (m)=manual int.

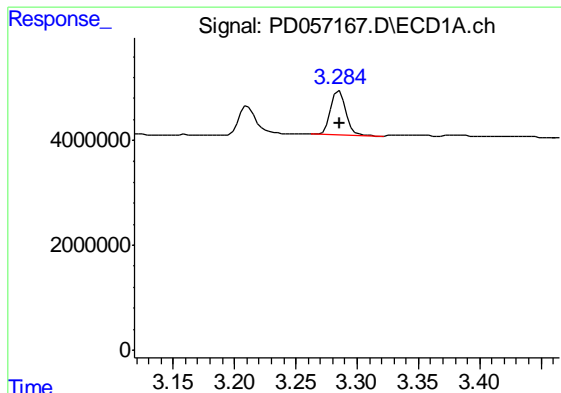
Data Path : Z:\pestpcbsrv\HPCHEM1\ECD\_D\Data\PD021020\  
 Data File : PD057167.D  
 Signal(s) : Signal #1: ECD1A.ch Signal #2: ECD2B.ch  
 Acq On : 10 Feb 2020 18:58  
 Operator : AJ\MA  
 Sample : L1302-06  
 Misc :  
 ALS Vial : 26 Sample Multiplier: 1

Instrument :  
 ECD\_D  
 Client Sampled :  
 C5AL6

Integration File signal 1: autoint1.e  
 Integration File signal 2: autoint2.e  
 Quant Time: Feb 11 06:32:31 2020  
 Quant Method : Z:\pestpcbsrv\HPCHEM1\ECD\_D\Method\PD021020CLP.M  
 Quant Title : GC Extractables  
 QLast Update : Tue Feb 11 04:58:40 2020  
 Response via : Initial Calibration  
 Integrator: ChemStation

Volume Inj. : 1 µl  
 Signal #1 Phase : ZB-MR2 Signal #2 Phase: ZB-MR1  
 Signal #1 Info : 30M x 0.32mm x0.2 Signal #2 Info : 30M x 0.32mm x 0.50µm

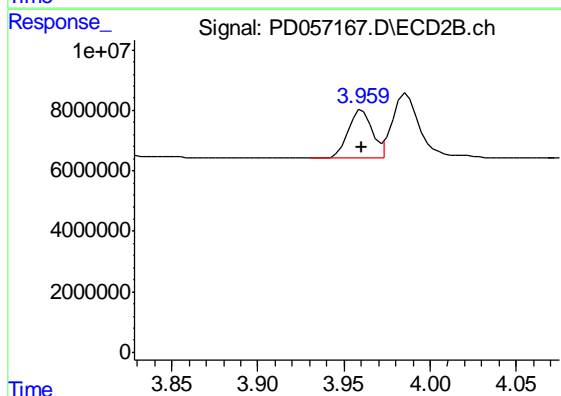




#1 Tetrachloro-m-xylene

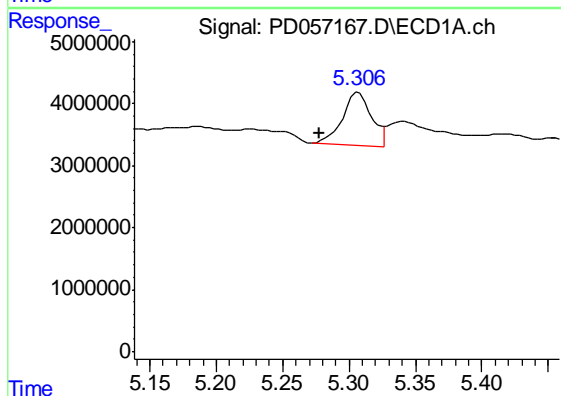
R.T.: 3.286 min  
 Delta R.T.: 0.000 min  
 Response: 7288404  
 Conc: 8.77 ng/ml

Instrument :  
 ECD\_D  
 ClientSampled :  
 C5AL6



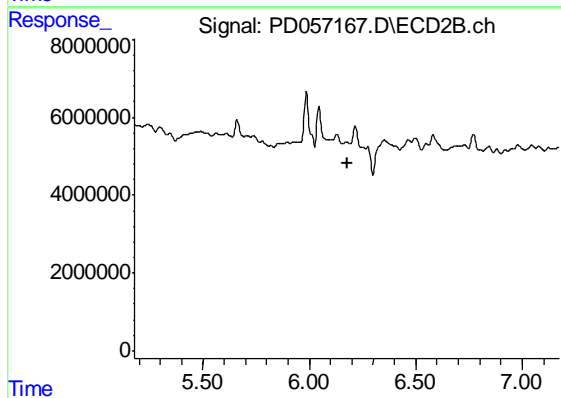
#1 Tetrachloro-m-xylene

R.T.: 3.961 min  
 Delta R.T.: 0.000 min  
 Response: 15619675  
 Conc: 8.38 ng/ml



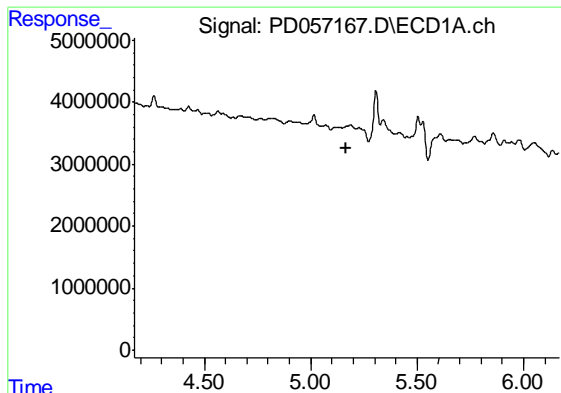
#9 Endosulfan I

R.T.: 5.307 min  
 Delta R.T.: 0.030 min  
 Response: 13074731  
 Conc: 12.97 ng/ml



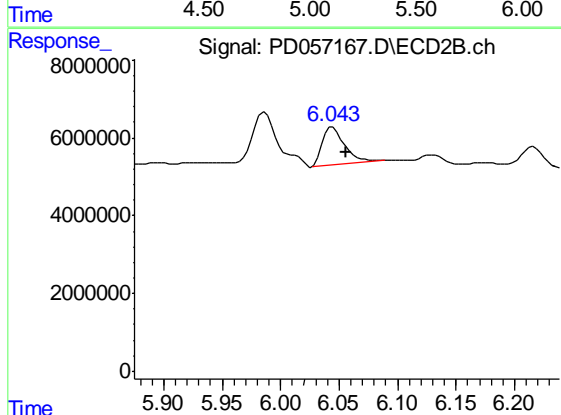
#9 Endosulfan I

R.T.: 0.000 min  
 Exp R.T. : 6.178 min  
 Response: 0  
 Conc: N.D.

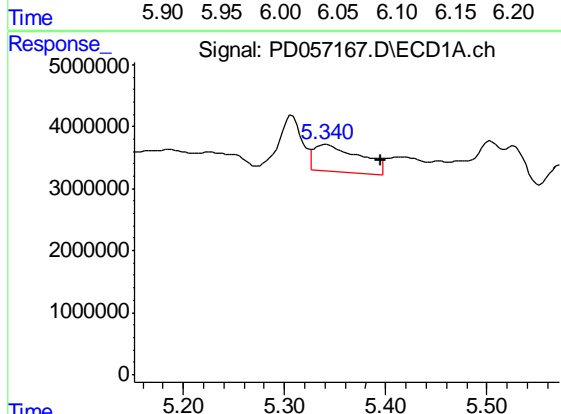


#10 trans-Chlordane  
 R.T.: 0.000 min  
 Exp R.T. : 5.169 min  
 Response: 0  
 Conc: N.D.

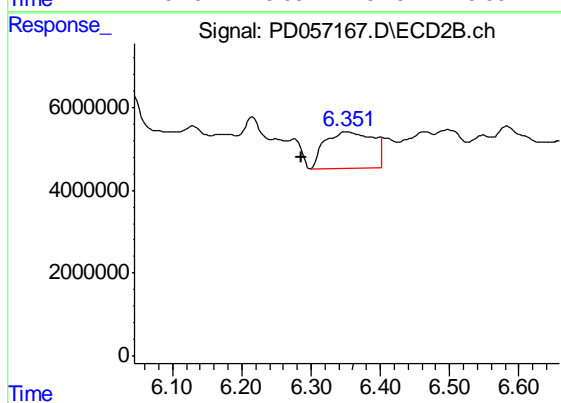
Instrument :  
 ECD\_D  
 ClientSampleId :  
 C5AL6



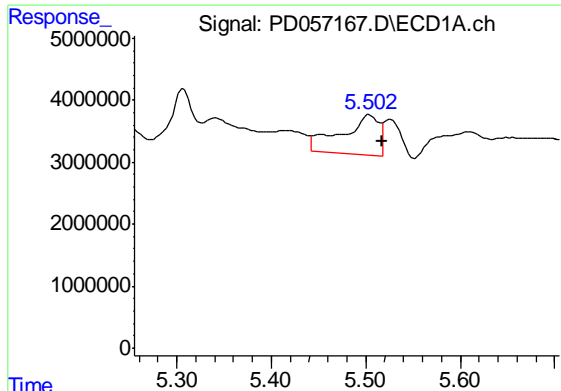
#10 trans-Chlordane  
 R.T.: 6.045 min  
 Delta R.T.: -0.012 min  
 Response: 12657849  
 Conc: 4.63 ng/ml



#12 4,4'-DDE  
 R.T.: 5.341 min  
 Delta R.T.: -0.053 min  
 Response: 13666760  
 Conc: 12.36 ng/ml



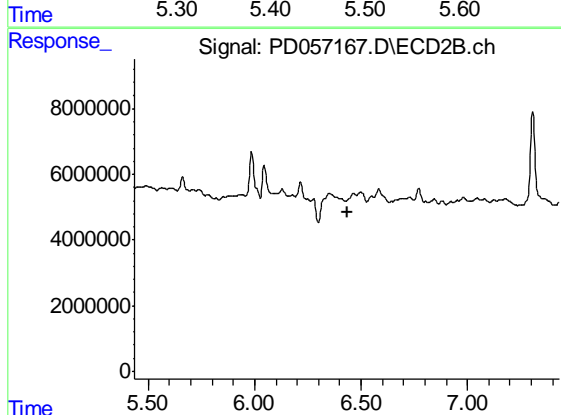
#12 4,4'-DDE  
 R.T.: 6.352 min  
 Delta R.T.: 0.066 min  
 Response: 42468877  
 Conc: 16.59 ng/ml



#13 Dieldrin

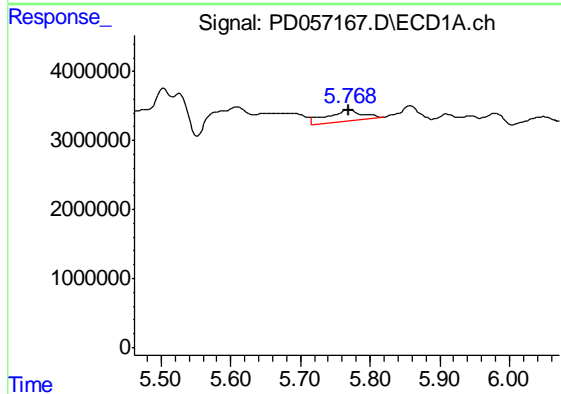
R.T.: 5.504 min  
 Delta R.T.: -0.013 min  
 Response: 17483931  
 Conc: 16.61 ng/ml

Instrument :  
 ECD\_D  
 ClientSampled :  
 C5AL6



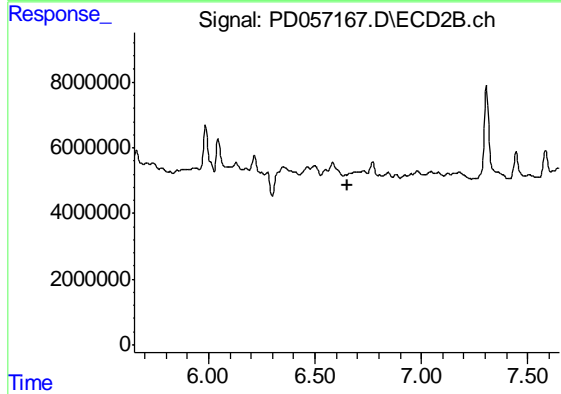
#13 Dieldrin

R.T.: 0.000 min  
 Exp R.T. : 6.434 min  
 Response: 0  
 Conc: N.D.



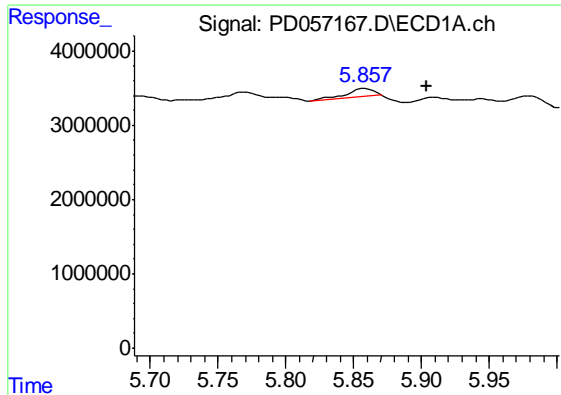
#14 Endrin

R.T.: 5.770 min  
 Delta R.T.: 0.000 min  
 Response: 5887618  
 Conc: 6.70 ng/ml



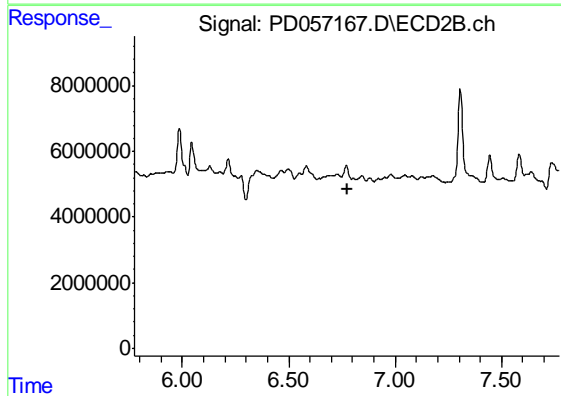
#14 Endrin

R.T.: 0.000 min  
 Exp R.T. : 6.650 min  
 Response: 0  
 Conc: N.D.

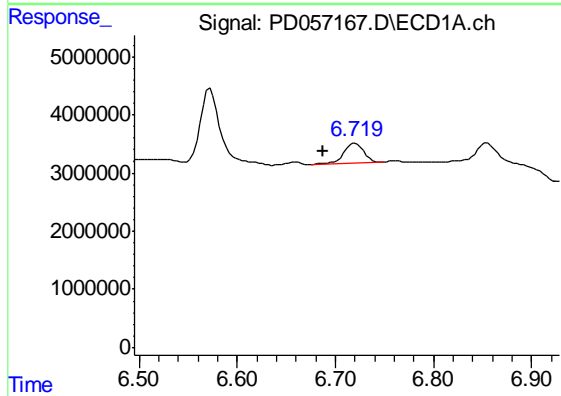


#16 4,4'-DDD  
 R.T.: 5.859 min  
 Delta R.T.: -0.046 min  
 Response: 1271405  
 Conc: 1.84 ng/ml

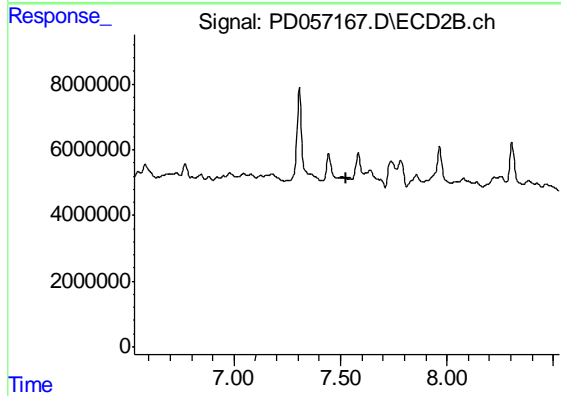
Instrument :  
 ECD\_D  
 ClientSampleId :  
 C5AL6



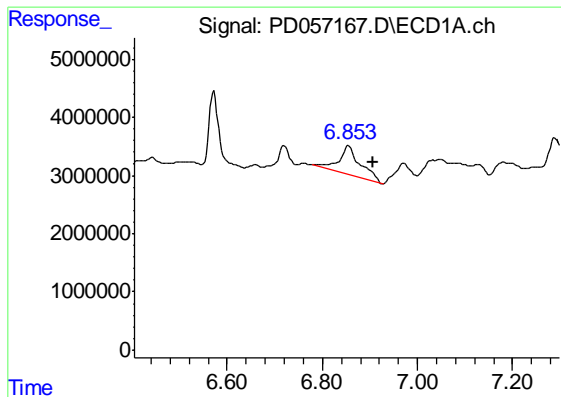
#16 4,4'-DDD  
 R.T.: 0.000 min  
 Exp R.T. : 6.774 min  
 Response: 0  
 Conc: N.D.



#20 Methoxychlor  
 R.T.: 6.720 min  
 Delta R.T.: 0.033 min  
 Response: 4735676  
 Conc: 16.91 ng/ml



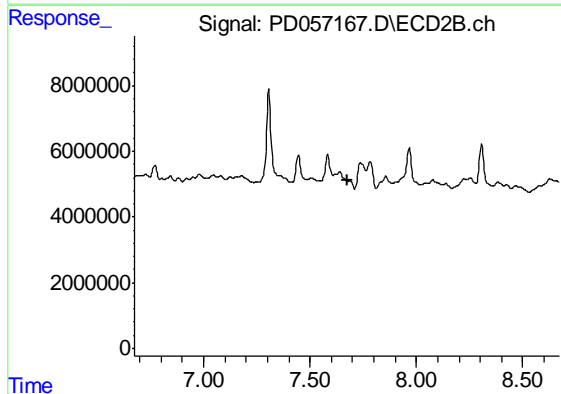
#20 Methoxychlor  
 R.T.: 0.000 min  
 Exp R.T. : 7.528 min  
 Response: 0  
 Conc: N.D.



#21 Endrin ketone

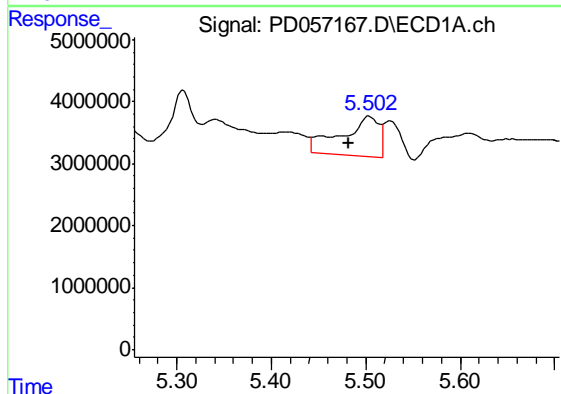
R.T.: 6.855 min  
 Delta R.T.: -0.053 min  
 Response: 16081219  
 Conc: 17.71 ng/ml

Instrument :  
 ECD\_D  
 ClientSampled :  
 C5AL6



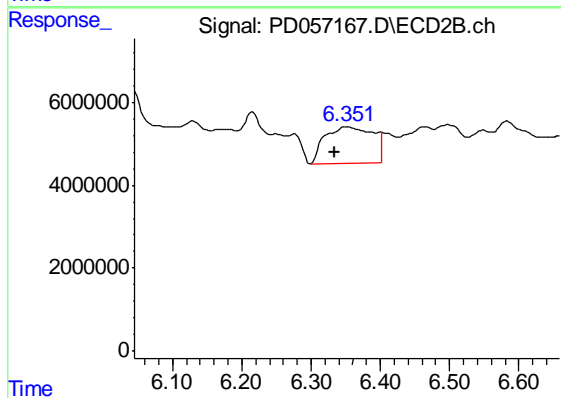
#21 Endrin ketone

R.T.: 0.000 min  
 Exp R.T. : 7.674 min  
 Response: 0  
 Conc: N.D.



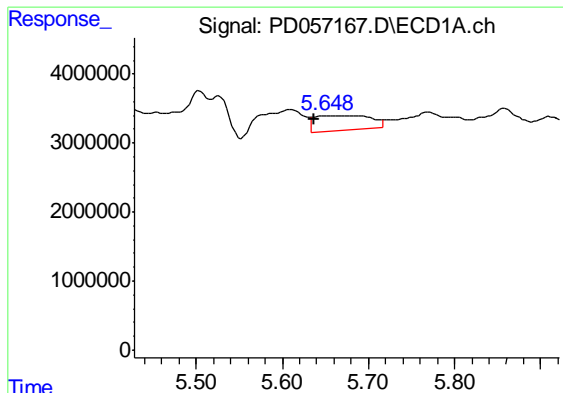
#22 Toxaphene-1

R.T.: 5.504 min  
 Delta R.T.: 0.022 min  
 Response: 17483931  
 Conc: 2901.18 ng/ml



#22 Toxaphene-1

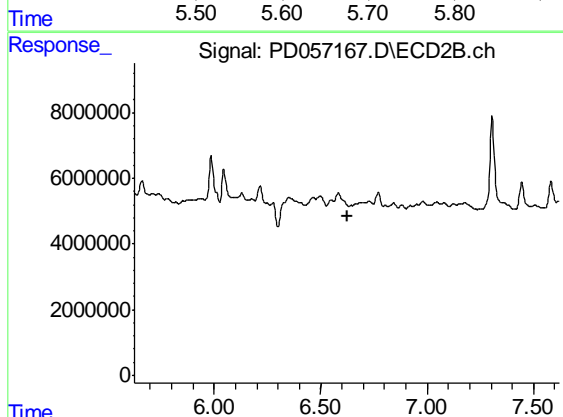
R.T.: 6.352 min  
 Delta R.T.: 0.018 min  
 Response: 42468877  
 Conc: 3419.66 ng/ml



#23 Toxaphene-2

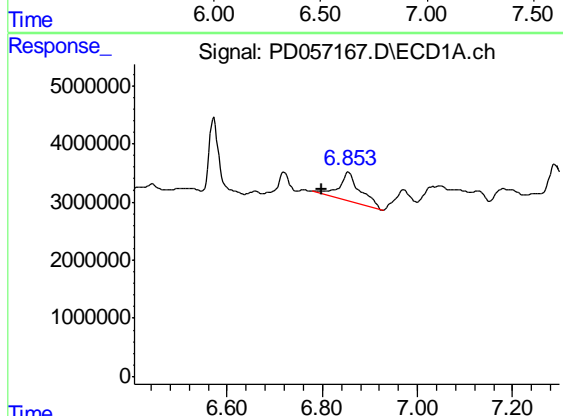
R.T.: 5.651 min  
 Delta R.T.: 0.014 min  
 Response: 9712778  
 Conc: 1696.83 ng/ml

Instrument :  
 ECD\_D  
 ClientSampleId :  
 C5AL6



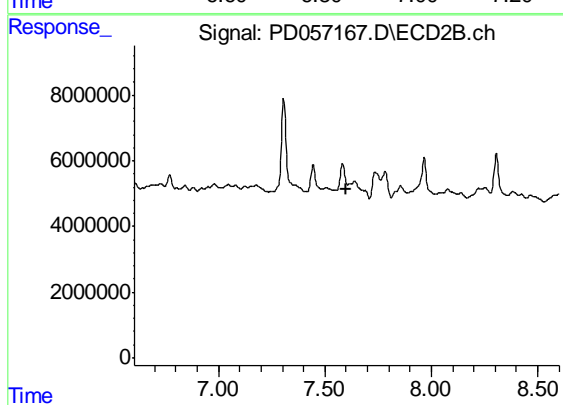
#23 Toxaphene-2

R.T.: 0.000 min  
 Exp R.T. : 6.624 min  
 Response: 0  
 Conc: N.D.



#26 Toxaphene-5

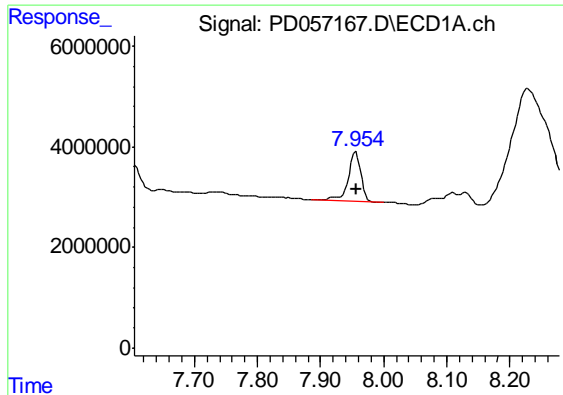
R.T.: 6.855 min  
 Delta R.T.: 0.055 min  
 Response: 16081219  
 Conc: 921.20 ng/ml



#26 Toxaphene-5

R.T.: 0.000 min  
 Exp R.T. : 7.602 min  
 Response: 0  
 Conc: N.D.

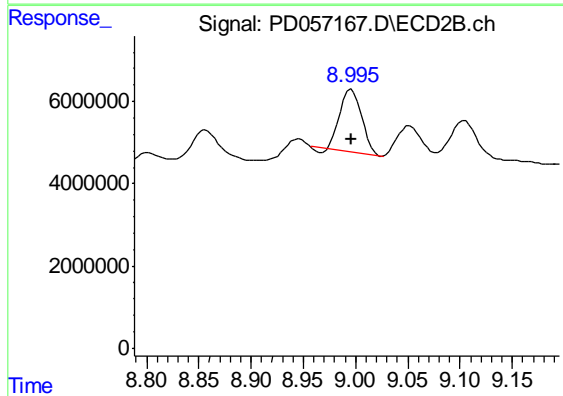




#27 Decachlorobiphenyl

R.T.: 7.956 min  
Delta R.T.: 0.000 min  
Response: 13434388  
Conc: 12.95 ng/ml

Instrument :  
ECD\_D  
ClientSampleId :  
C5AL6



#27 Decachlorobiphenyl

R.T.: 8.996 min  
Delta R.T.: 0.000 min  
Response: 21693717  
Conc: 9.60 ng/ml