

Data Path : Z:\pestpcbsrv\HPCHEM1\ECD_D\Data\PD021020\
 Data File : PD057177.D
 Signal(s) : Signal #1: ECD1A.ch Signal #2: ECD2B.ch
 Acq On : 10 Feb 2020 21:19
 Operator : AJ\MA
 Sample : L1302-17MS
 Misc :
 ALS Vial : 36 Sample Multiplier: 1

Instrument :
 ECD_D
 ClientSampleId :
 C5AQ6MS

Integration File signal 1: autoint1.e
 Integration File signal 2: autoint2.e
 Quant Time: Feb 11 06:36:08 2020
 Quant Method : Z:\pestpcbsrv\HPCHEM1\ECD_D\Method\PD021020CLP.M
 Quant Title : GC Extractables
 QLast Update : Tue Feb 11 04:58:40 2020
 Response via : Initial Calibration
 Integrator: ChemStation

Volume Inj. : 1 µl
 Signal #1 Phase : ZB-MR2 Signal #2 Phase: ZB-MR1
 Signal #1 Info : 30M x 0.32mm x0.2 Signal #2 Info : 30M x 0.32mm x 0.50µm

Compound	RT#1	RT#2	Resp#1	Resp#2	ng/ml	ng/ml

System Monitoring Compounds						
1) SA Tetrachlo...	3.285	3.960	12280053	26979562	14.783	14.478
27) SA Decachlor...	7.955	8.996	24768514	39555291	23.875	17.498 #
Target Compounds						
3) MA gamma-BHC...	3.987	4.629	66865230	154.6E6	52.729	54.575
4) MA Heptachlor	4.272	5.134	50320106	118.3E6	65.787	50.747
5) MB Aldrin	4.511	5.438	61581169	143.8E6	54.221	52.010
6) B beta-BHC	4.272f	0.000	50320106	0	100.762	N.D. #
8) B Heptachlo...	5.014f	0.000	7393465	0	7.130	N.D. #
9) A Endosulfan I	5.307	0.000	13529986	0	13.425	N.D. #
10) B trans-Chl...	0.000	6.044	0	18464404	N.D.	6.754
12) B 4,4'-DDE	5.394	0.000	13320725	0	12.047	N.D. #
13) MA Dieldrin	5.518	6.434	133.9E6	275.3E6	127.259	102.346
14) MA Endrin	5.771	6.651	97599753	225.8E6	111.063	107.298
17) MA 4,4'-DDT	6.139	7.071	74396129	199.2E6	114.328	104.935
20) A Methoxychlor	6.720	7.583f	5952193	9584783	21.260	10.624 #
21) B Endrin ke...	6.854f	0.000	11538761	0	12.704	N.D. #
22) Toxaphene-1	5.518	0.000	133.9E6	0	22226.189	N.D. #
23) Toxaphene-2	5.609	6.651	10107216	225.8E6	1765.736	13728.359 #
24) Toxaphene-3	0.000	7.071	0	199.2E6	N.D.	9851.069
25) Toxaphene-4	6.139	7.071	74396129	199.2E6	4555.030	3318.751 #
26) Toxaphene-5	6.854	7.583	11538761	9584783	660.992	362.204 #

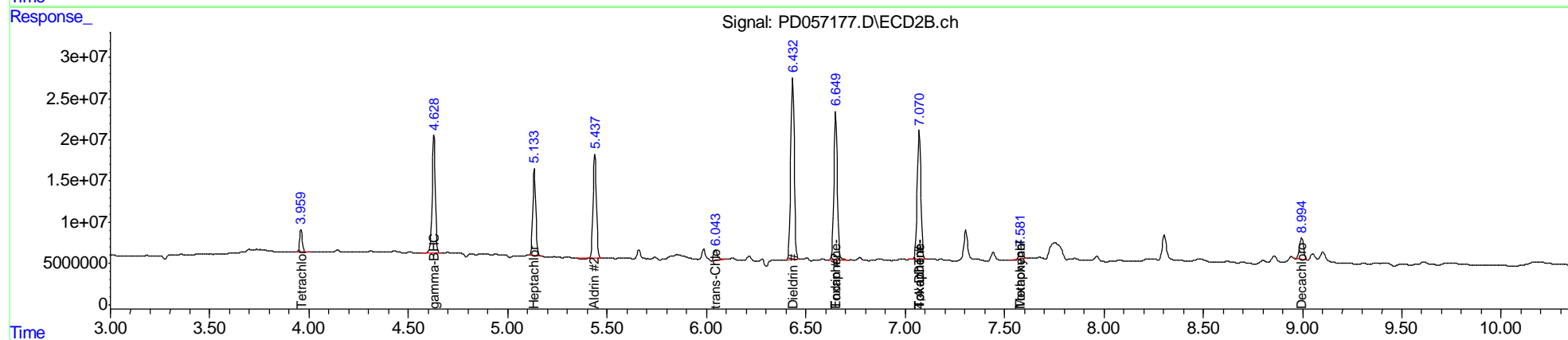
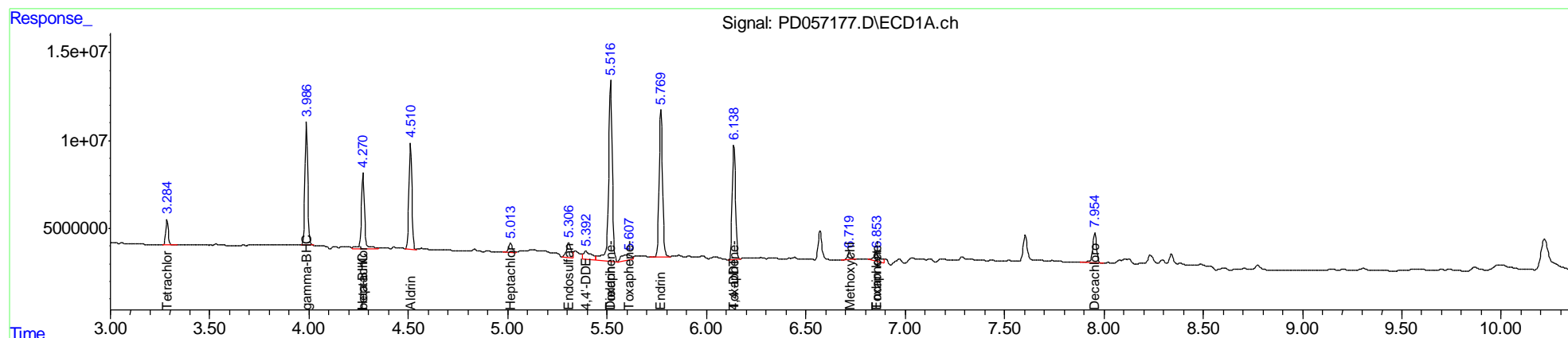
(f)=RT Delta > 1/2 Window (#)=Amounts differ by > 25% (m)=manual int.

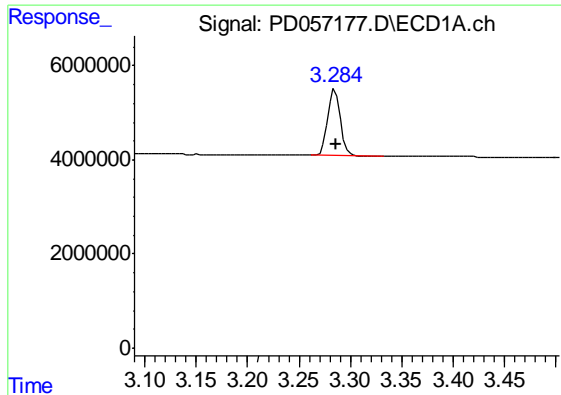
Data Path : Z:\pestpcbsrv\HPCHEM1\ECD_D\Data\PD021020\
 Data File : PD057177.D
 Signal(s) : Signal #1: ECD1A.ch Signal #2: ECD2B.ch
 Acq On : 10 Feb 2020 21:19
 Operator : AJ\MA
 Sample : L1302-17MS
 Misc :
 ALS Vial : 36 Sample Multiplier: 1

Instrument :
 ECD_D
 Client Sampled :
 C5AQ6MS

Integration File signal 1: autoint1.e
 Integration File signal 2: autoint2.e
 Quant Time: Feb 11 06:36:08 2020
 Quant Method : Z:\pestpcbsrv\HPCHEM1\ECD_D\Method\PD021020CLP.M
 Quant Title : GC Extractables
 QLast Update : Tue Feb 11 04:58:40 2020
 Response via : Initial Calibration
 Integrator: ChemStation

Volume Inj. : 1 µl
 Signal #1 Phase : ZB-MR2 Signal #2 Phase: ZB-MR1
 Signal #1 Info : 30M x 0.32mm x0.2 Signal #2 Info : 30M x 0.32mm x 0.50µm

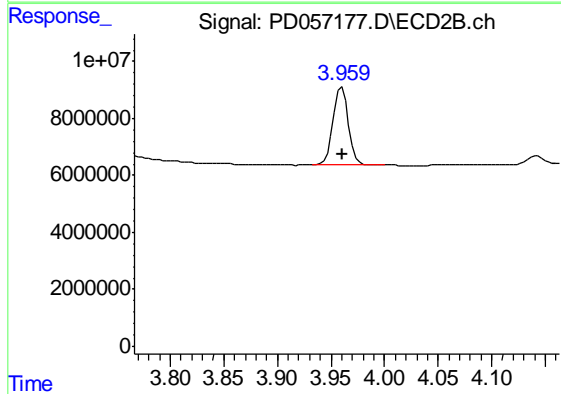




#1 Tetrachloro-m-xylene

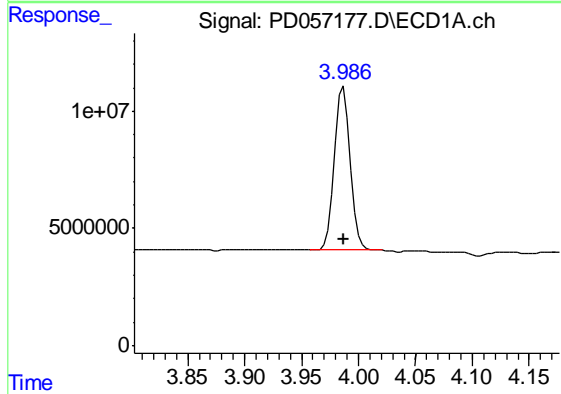
R.T.: 3.285 min
 Delta R.T.: -0.001 min
 Response: 12280053
 Conc: 14.78 ng/ml

Instrument :
 ECD_D
 ClientSampleId :
 C5AQ6MS



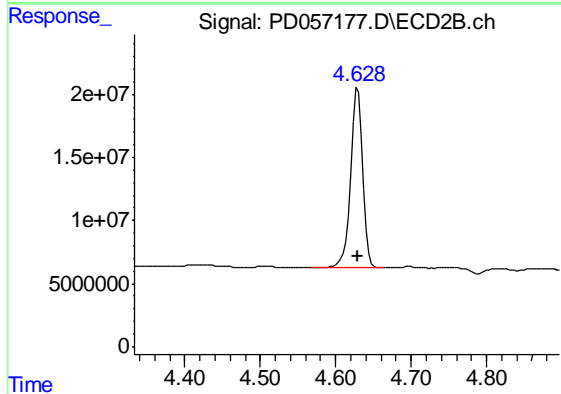
#1 Tetrachloro-m-xylene

R.T.: 3.960 min
 Delta R.T.: 0.000 min
 Response: 26979562
 Conc: 14.48 ng/ml



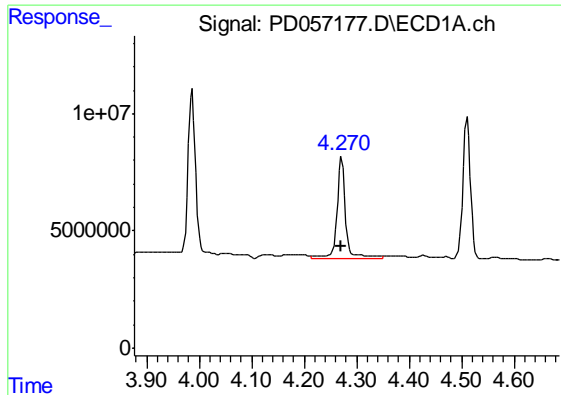
#3 gamma-BHC (Lindane)

R.T.: 3.987 min
 Delta R.T.: 0.000 min
 Response: 66865230
 Conc: 52.73 ng/ml



#3 gamma-BHC (Lindane)

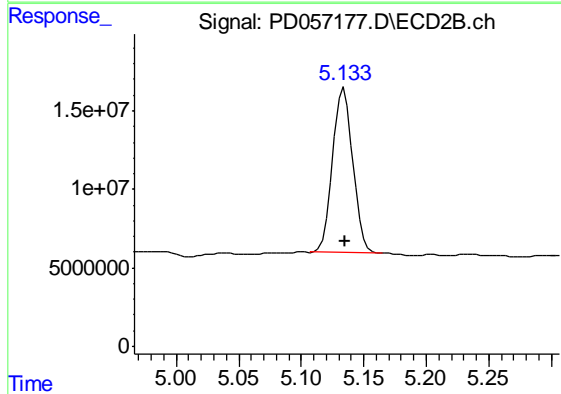
R.T.: 4.629 min
 Delta R.T.: 0.000 min
 Response: 154627760
 Conc: 54.57 ng/ml



#4 Heptachlor

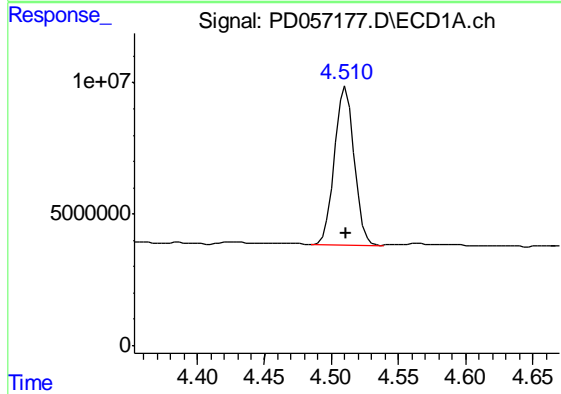
R.T.: 4.272 min
 Delta R.T.: 0.000 min
 Response: 50320106
 Conc: 65.79 ng/ml

Instrument :
 ECD_D
 ClientSampleId :
 C5AQ6MS



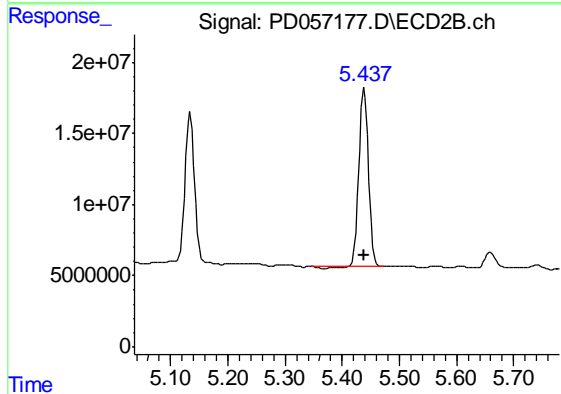
#4 Heptachlor

R.T.: 5.134 min
 Delta R.T.: 0.000 min
 Response: 118263601
 Conc: 50.75 ng/ml



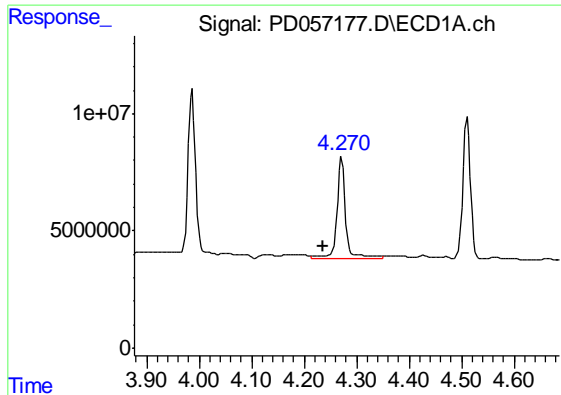
#5 Aldrin

R.T.: 4.511 min
 Delta R.T.: 0.000 min
 Response: 61581169
 Conc: 54.22 ng/ml



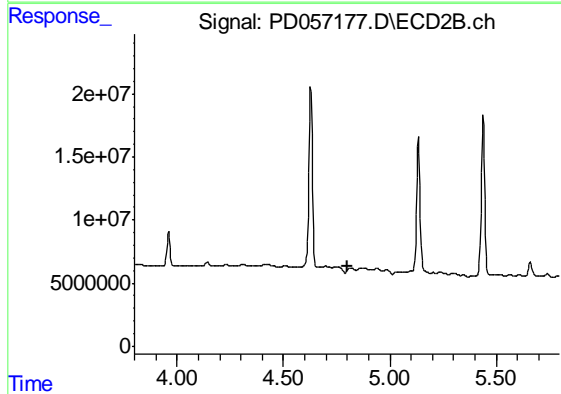
#5 Aldrin

R.T.: 5.438 min
 Delta R.T.: 0.000 min
 Response: 143807165
 Conc: 52.01 ng/ml

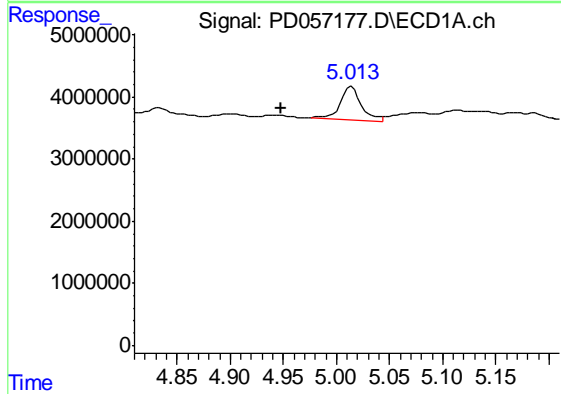


#6 beta-BHC
 R.T.: 4.272 min
 Delta R.T.: 0.035 min
 Response: 50320106
 Conc: 100.76 ng/ml

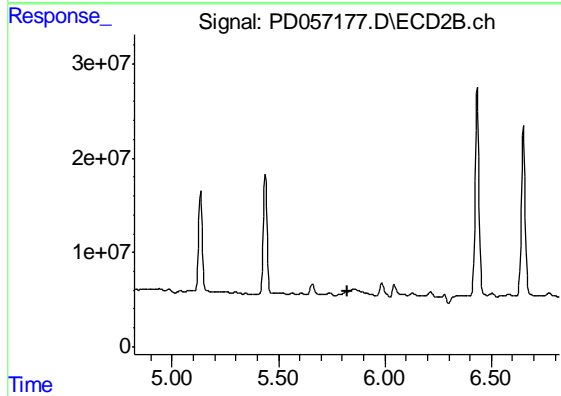
Instrument :
 ECD_D
 ClientSampleId :
 C5AQ6MS



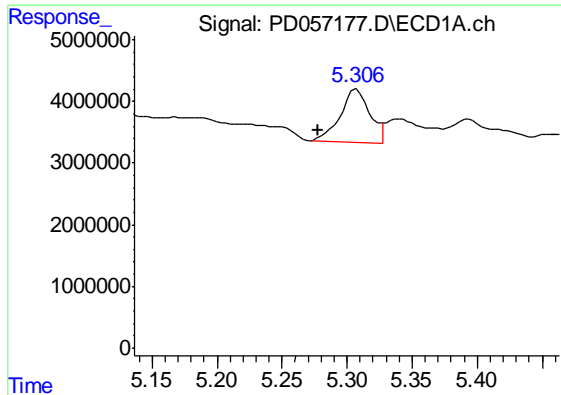
#6 beta-BHC
 R.T.: 0.000 min
 Exp R.T. : 4.799 min
 Response: 0
 Conc: N.D.



#8 Heptachlor epoxide
 R.T.: 5.014 min
 Delta R.T.: 0.067 min
 Response: 7393465
 Conc: 7.13 ng/ml



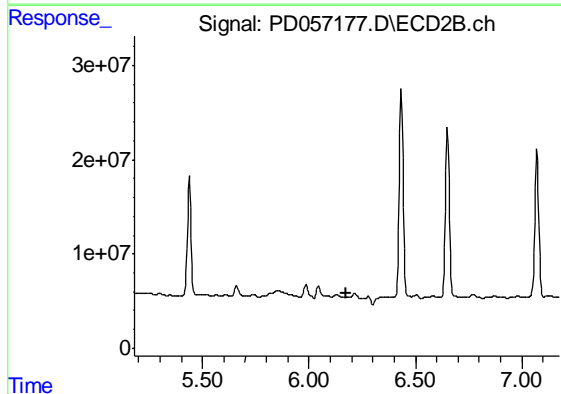
#8 Heptachlor epoxide
 R.T.: 0.000 min
 Exp R.T. : 5.823 min
 Response: 0
 Conc: N.D.



#9 Endosulfan I

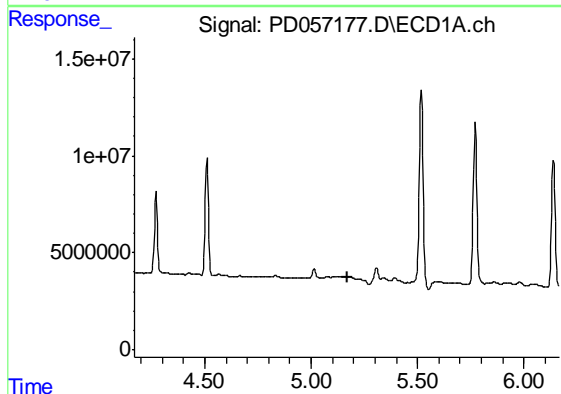
R.T.: 5.307 min
 Delta R.T.: 0.030 min
 Response: 13529986
 Conc: 13.42 ng/ml

Instrument :
 ECD_D
 ClientSampleId :
 C5AQ6MS



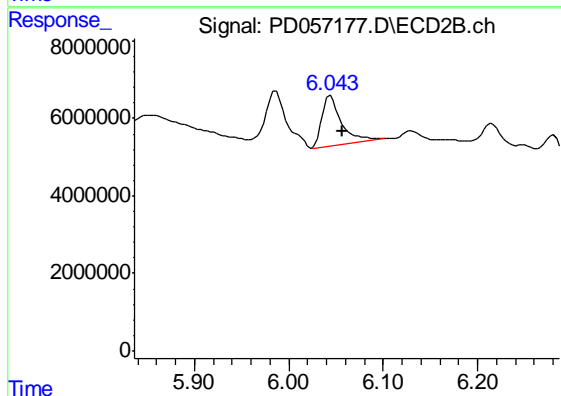
#9 Endosulfan I

R.T.: 0.000 min
 Exp R.T. : 6.178 min
 Response: 0
 Conc: N.D.



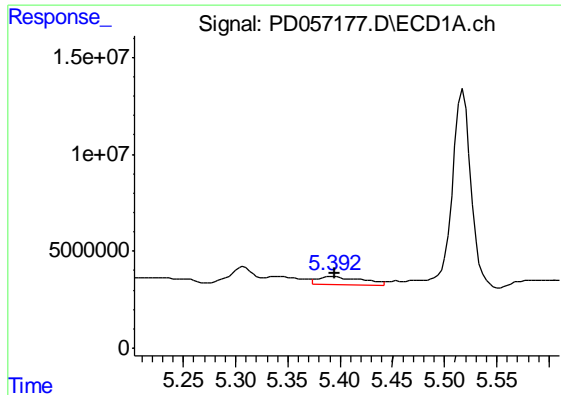
#10 trans-Chlordane

R.T.: 0.000 min
 Exp R.T. : 5.169 min
 Response: 0
 Conc: N.D.



#10 trans-Chlordane

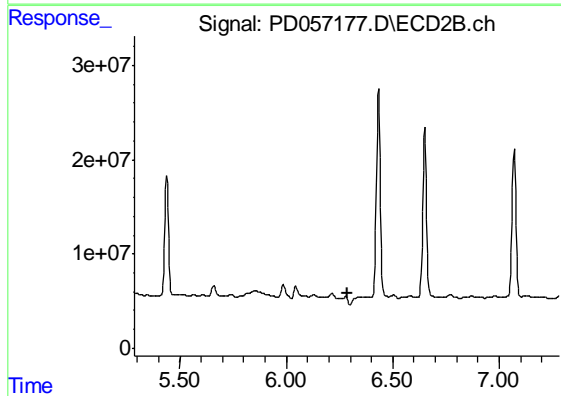
R.T.: 6.044 min
 Delta R.T.: -0.012 min
 Response: 18464404
 Conc: 6.75 ng/ml



#12 4,4'-DDE

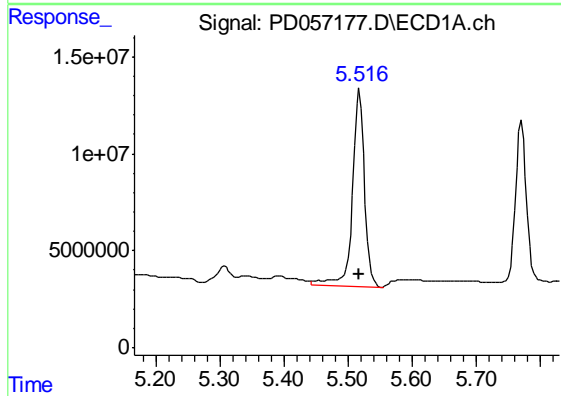
R.T.: 5.394 min
 Delta R.T.: 0.000 min
 Response: 13320725
 Conc: 12.05 ng/ml

Instrument :
 ECD_D
 ClientSampleId :
 C5AQ6MS



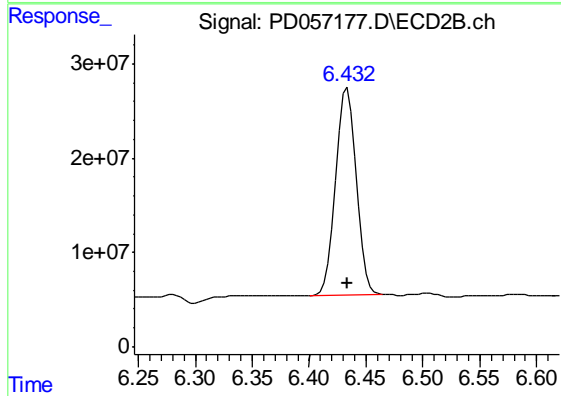
#12 4,4'-DDE

R.T.: 0.000 min
 Exp R.T. : 6.286 min
 Response: 0
 Conc: N.D.



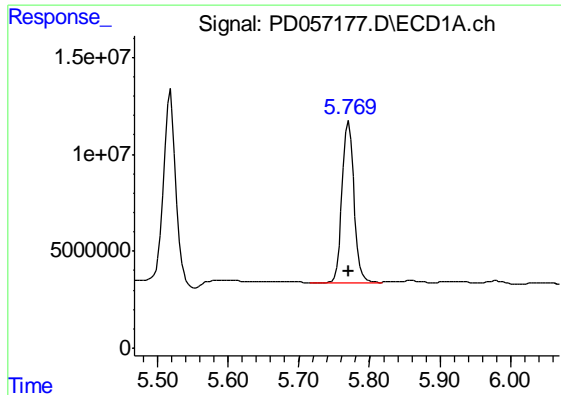
#13 Dieldrin

R.T.: 5.518 min
 Delta R.T.: 0.000 min
 Response: 133945980
 Conc: 127.26 ng/ml



#13 Dieldrin

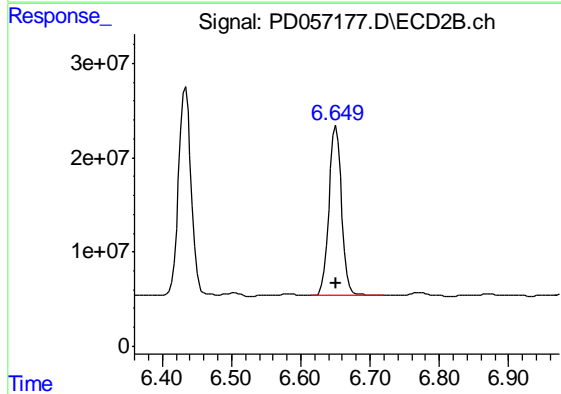
R.T.: 6.434 min
 Delta R.T.: 0.000 min
 Response: 275278571
 Conc: 102.35 ng/ml



#14 Endrin

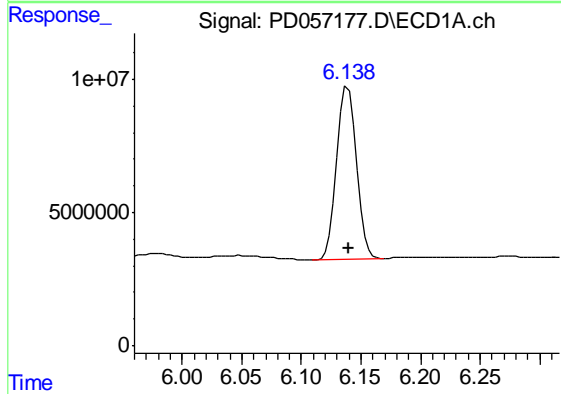
R.T.: 5.771 min
 Delta R.T.: 0.000 min
 Response: 97599753
 Conc: 111.06 ng/ml

Instrument :
 ECD_D
 ClientSampleId :
 C5AQ6MS



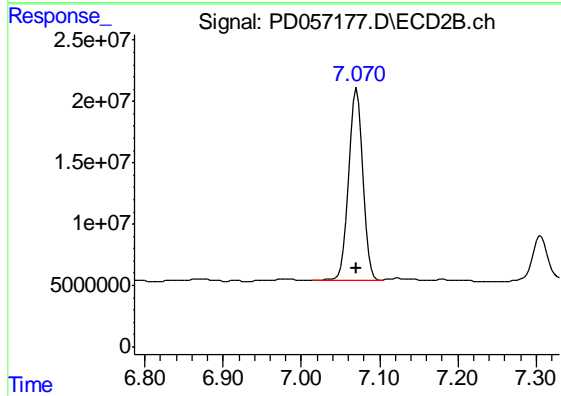
#14 Endrin

R.T.: 6.651 min
 Delta R.T.: 0.000 min
 Response: 225790286
 Conc: 107.30 ng/ml



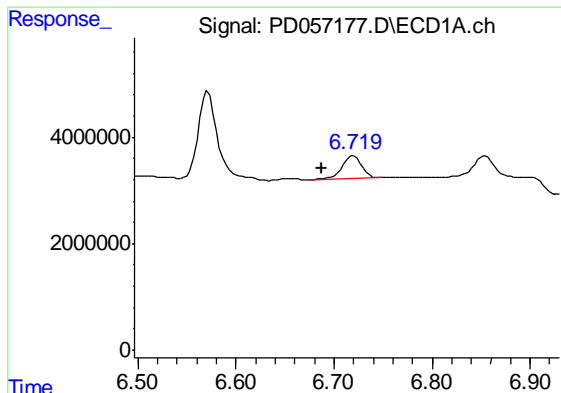
#17 4,4'-DDT

R.T.: 6.139 min
 Delta R.T.: 0.000 min
 Response: 74396129
 Conc: 114.33 ng/ml



#17 4,4'-DDT

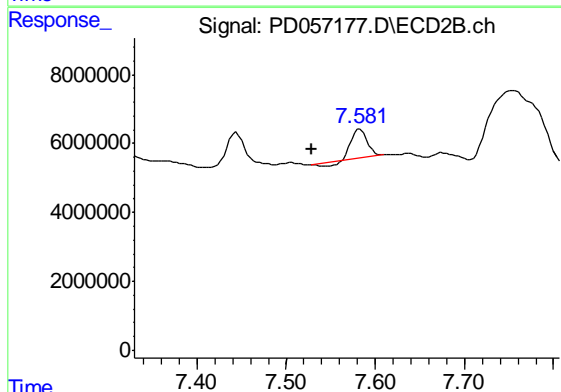
R.T.: 7.071 min
 Delta R.T.: 0.000 min
 Response: 199232171
 Conc: 104.93 ng/ml



#20 Methoxychlor

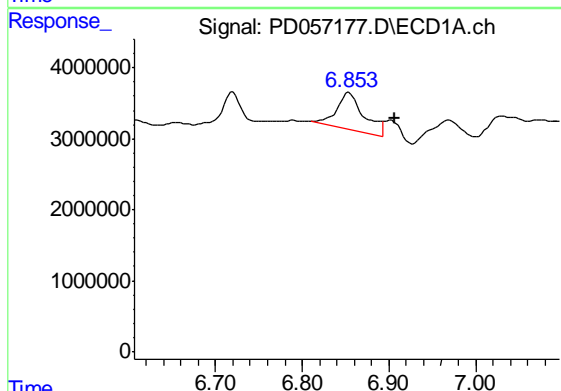
R.T.: 6.720 min
 Delta R.T.: 0.033 min
 Response: 5952193
 Conc: 21.26 ng/ml

Instrument :
 ECD_D
 ClientSampleId :
 C5AQ6MS



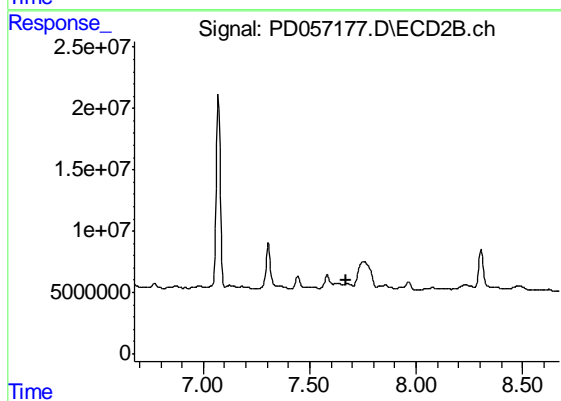
#20 Methoxychlor

R.T.: 7.583 min
 Delta R.T.: 0.054 min
 Response: 9584783
 Conc: 10.62 ng/ml



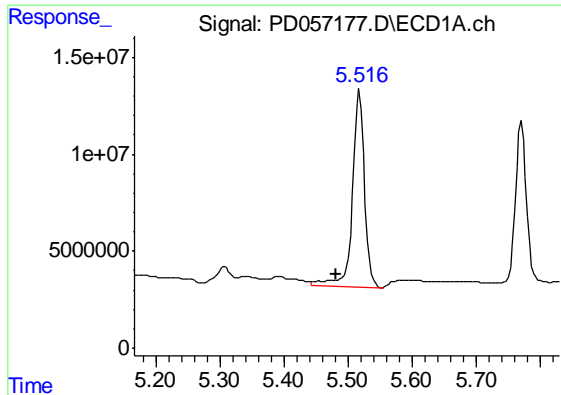
#21 Endrin ketone

R.T.: 6.854 min
 Delta R.T.: -0.053 min
 Response: 11538761
 Conc: 12.70 ng/ml



#21 Endrin ketone

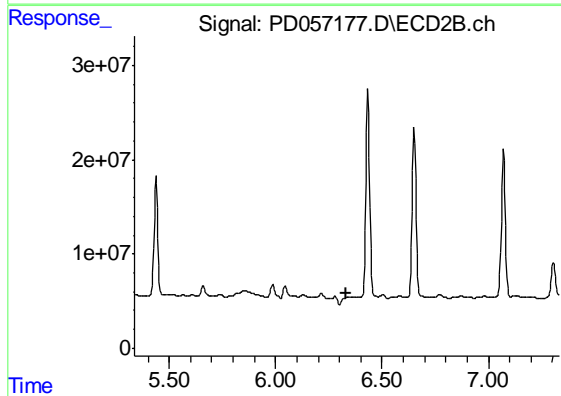
R.T.: 0.000 min
 Exp R.T. : 7.674 min
 Response: 0
 Conc: N.D.



#22 Toxaphene-1

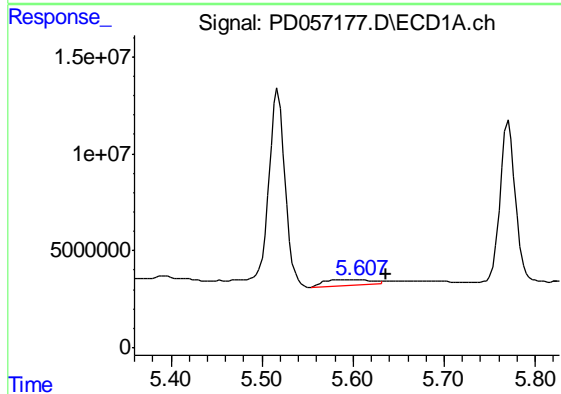
R.T.: 5.518 min
 Delta R.T.: 0.036 min
 Response: 133945980
 Conc: 22226.19 ng/ml

Instrument :
 ECD_D
 ClientSampleId :
 C5AQ6MS



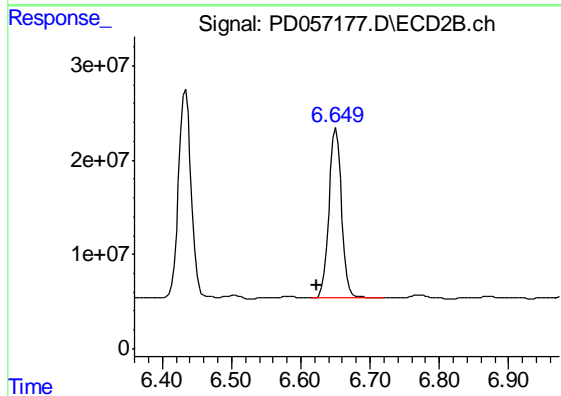
#22 Toxaphene-1

R.T.: 0.000 min
 Exp R.T. : 6.334 min
 Response: 0
 Conc: N.D.



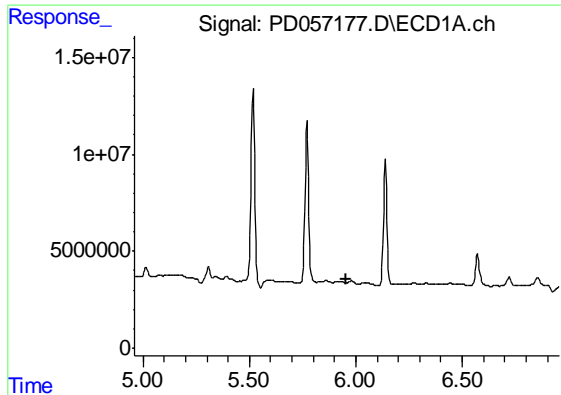
#23 Toxaphene-2

R.T.: 5.609 min
 Delta R.T.: -0.028 min
 Response: 10107216
 Conc: 1765.74 ng/ml



#23 Toxaphene-2

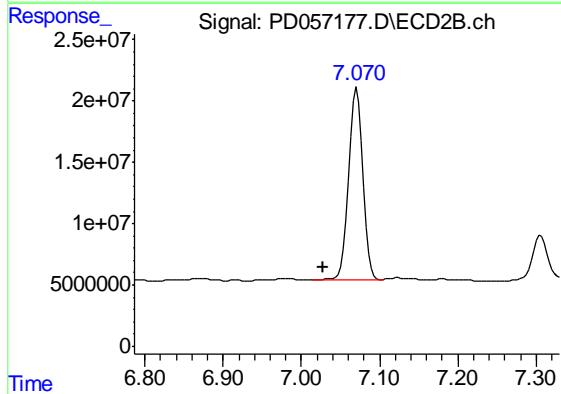
R.T.: 6.651 min
 Delta R.T.: 0.027 min
 Response: 225790286
 Conc: 13728.36 ng/ml



#24 Toxaphene-3

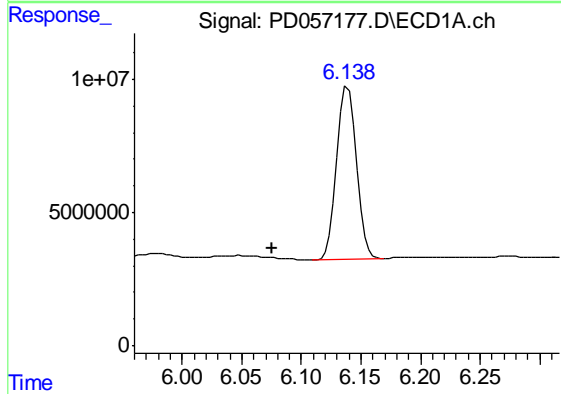
R.T.: 0.000 min
 Exp R.T. : 5.958 min
 Response: 0
 Conc: N.D.

Instrument :
 ECD_D
 ClientSampleId :
 C5AQ6MS



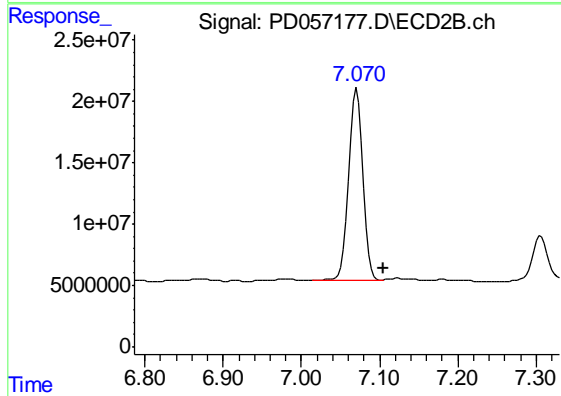
#24 Toxaphene-3

R.T.: 7.071 min
 Delta R.T.: 0.043 min
 Response: 199232171
 Conc: 9851.07 ng/ml



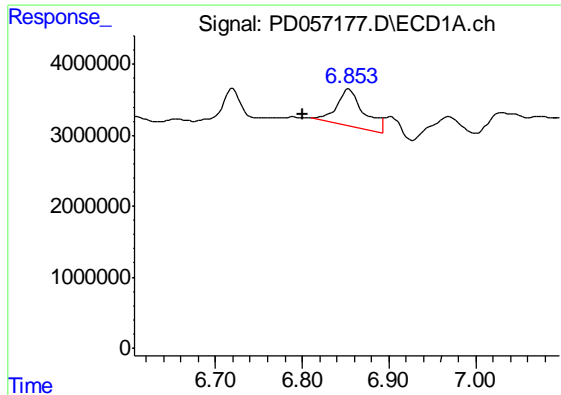
#25 Toxaphene-4

R.T.: 6.139 min
 Delta R.T.: 0.064 min
 Response: 74396129
 Conc: 4555.03 ng/ml



#25 Toxaphene-4

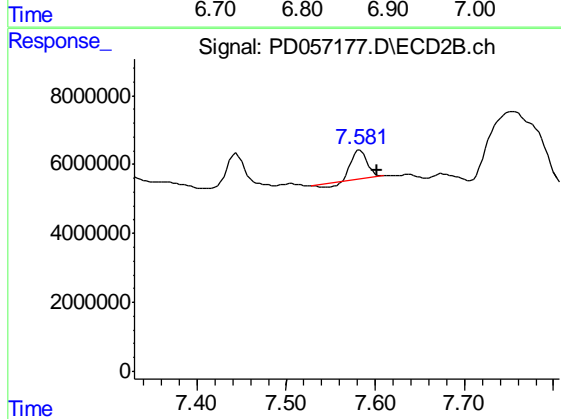
R.T.: 7.071 min
 Delta R.T.: -0.034 min
 Response: 199232171
 Conc: 3318.75 ng/ml



#26 Toxaphene-5

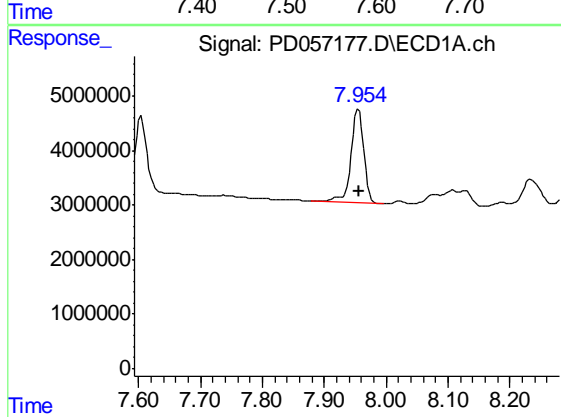
R.T.: 6.854 min
 Delta R.T.: 0.054 min
 Response: 11538761
 Conc: 660.99 ng/ml

Instrument :
 ECD_D
 ClientSampled :
 C5AQ6MS



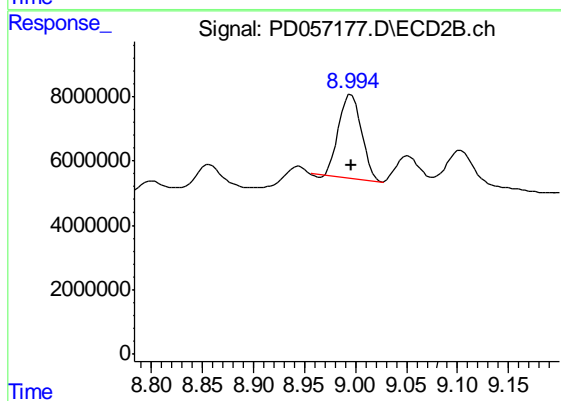
#26 Toxaphene-5

R.T.: 7.583 min
 Delta R.T.: -0.020 min
 Response: 9584783
 Conc: 362.20 ng/ml



#27 Decachlorobiphenyl

R.T.: 7.955 min
 Delta R.T.: 0.000 min
 Response: 24768514
 Conc: 23.87 ng/ml



#27 Decachlorobiphenyl

R.T.: 8.996 min
 Delta R.T.: 0.000 min
 Response: 3955291
 Conc: 17.50 ng/ml