

Data Path : Z:\pestpcbsrv\HPCHEM1\ECD_D\Data\PD021020\
 Data File : PD057181.D
 Signal(s) : Signal #1: ECD1A.ch Signal #2: ECD2B.ch
 Acq On : 10 Feb 2020 22:16
 Operator : AJ\MA
 Sample : L1302-01
 Misc :
 ALS Vial : 40 Sample Multiplier: 1

Instrument :
 ECD_D
 ClientSampleId :
 C5AK6

Integration File signal 1: autoint1.e
 Integration File signal 2: autoint2.e
 Quant Time: Feb 11 06:40:17 2020
 Quant Method : Z:\pestpcbsrv\HPCHEM1\ECD_D\Method\PD021020CLP.M
 Quant Title : GC Extractables
 QLast Update : Tue Feb 11 04:58:40 2020
 Response via : Initial Calibration
 Integrator: ChemStation

Volume Inj. : 1 µl
 Signal #1 Phase : ZB-MR2 Signal #2 Phase: ZB-MR1
 Signal #1 Info : 30M x 0.32mm x0.2 Signal #2 Info : 30M x 0.32mm x 0.50µm

Compound	RT#1	RT#2	Resp#1	Resp#2	ng/ml	ng/ml

System Monitoring Compounds						
1) SA Tetrachlo...	3.286	3.961	10294559	22588554	12.393	12.122
27) SA Decachlor...	7.956	8.996	18553810	33035949	17.884	14.614
Target Compounds						
3) MA gamma-BHC...	3.995	0.000	947468	0	0.747	N.D. #
4) MA Heptachlor	4.266	0.000	1271374	0	1.662	N.D. #
6) B beta-BHC	4.266f	0.000	1271374	0	2.546	N.D. #
8) B Heptachlo...	4.902f	0.000	362232	0	0.349	N.D. #
9) A Endosulfan I	5.308	0.000	2677685	0	2.657	N.D. #
12) B 4,4'-DDE	5.345f	0.000	6786758	0	6.138	N.D. #
13) MA Dieldrin	5.505	0.000	6890778	0	6.547	N.D. #
15) B Endosulfa...	5.982f	0.000	1241159	0	1.303	N.D. #
16) A 4,4'-DDD	5.862f	0.000	284632	0	0.411	N.D. #
20) A Methoxychlor	6.721	0.000	3066310	0	10.952	N.D. #
21) B Endrin ke...	6.857f	0.000	7891380	0	8.688	N.D. #
22) Toxaphene-1	5.505	0.000	6890778	0	1143.414	N.D. #
23) Toxaphene-2	5.687	0.000	4104746	0	717.101	N.D. #
24) Toxaphene-3	5.982	0.000	1241159	0	248.077	N.D. #
26) Toxaphene-5	6.857	0.000	7891380	0	452.054	N.D. #

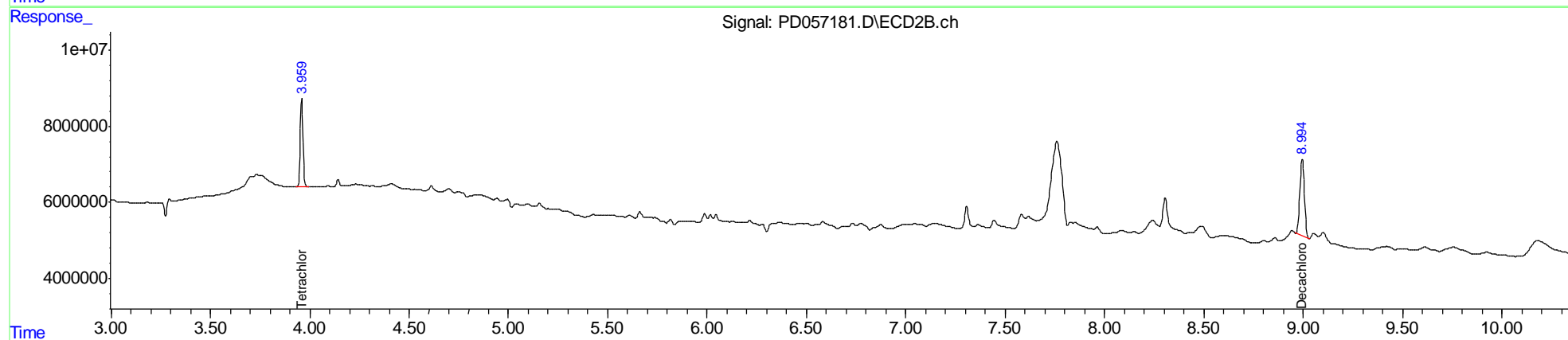
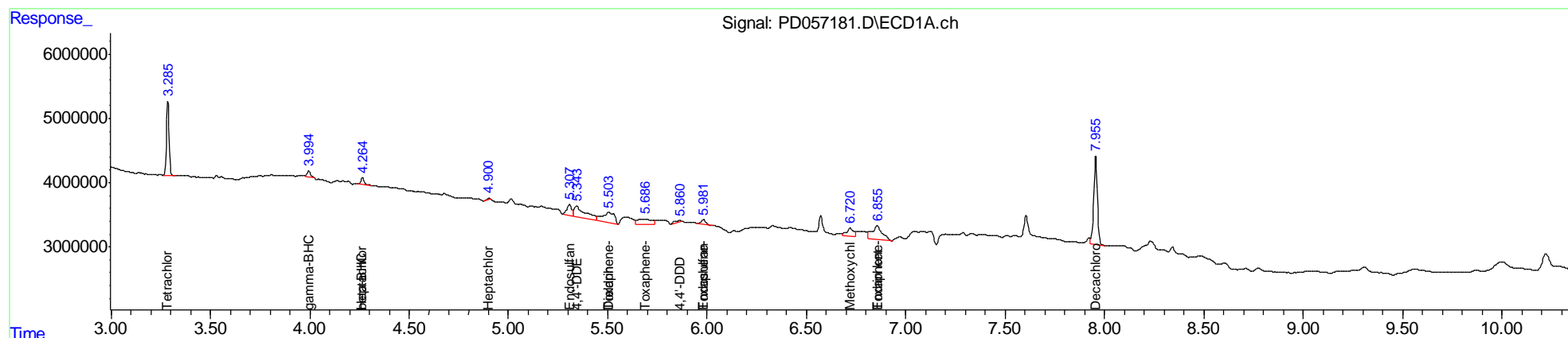
(f)=RT Delta > 1/2 Window (#)=Amounts differ by > 25% (m)=manual int.

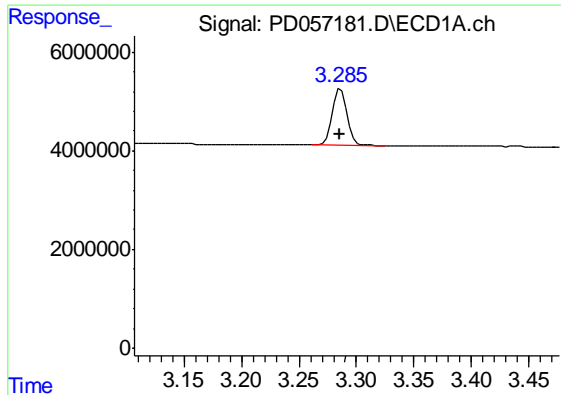
Data Path : Z:\pestpcbsrv\HPCHEM1\ECD_D\Data\PD021020\
 Data File : PD057181.D
 Signal(s) : Signal #1: ECD1A.ch Signal #2: ECD2B.ch
 Acq On : 10 Feb 2020 22:16
 Operator : AJ\MA
 Sample : L1302-01
 Misc :
 ALS Vial : 40 Sample Multiplier: 1

Instrument :
 ECD_D
 ClientSampleId :
 C5AK6

Integration File signal 1: autoint1.e
 Integration File signal 2: autoint2.e
 Quant Time: Feb 11 06:40:17 2020
 Quant Method : Z:\pestpcbsrv\HPCHEM1\ECD_D\Method\PD021020CLP.M
 Quant Title : GC Extractables
 QLast Update : Tue Feb 11 04:58:40 2020
 Response via : Initial Calibration
 Integrator: ChemStation

Volume Inj. : 1 µl
 Signal #1 Phase : ZB-MR2 Signal #2 Phase: ZB-MR1
 Signal #1 Info : 30M x 0.32mm x0.2 Signal #2 Info : 30M x 0.32mm x 0.50µm

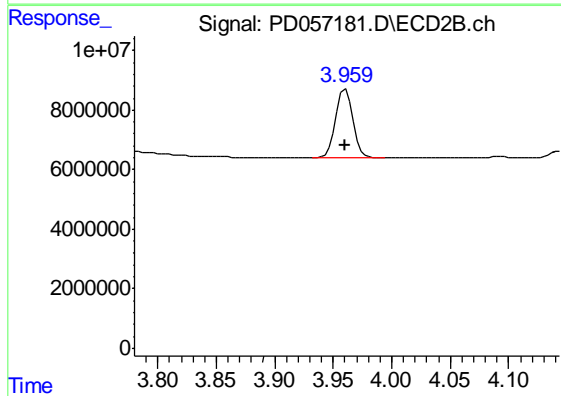




#1 Tetrachloro-m-xylene

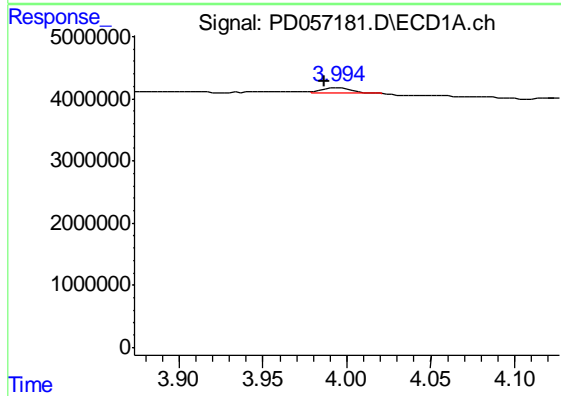
R.T.: 3.286 min
 Delta R.T.: 0.000 min
 Response: 10294559
 Conc: 12.39 ng/ml

Instrument :
 ECD_D
 ClientSampleId :
 C5AK6



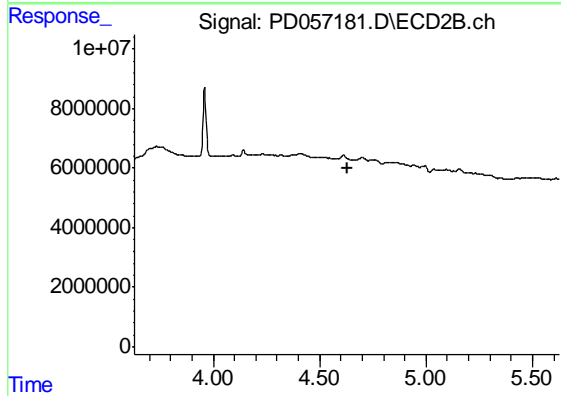
#1 Tetrachloro-m-xylene

R.T.: 3.961 min
 Delta R.T.: 0.000 min
 Response: 22588554
 Conc: 12.12 ng/ml



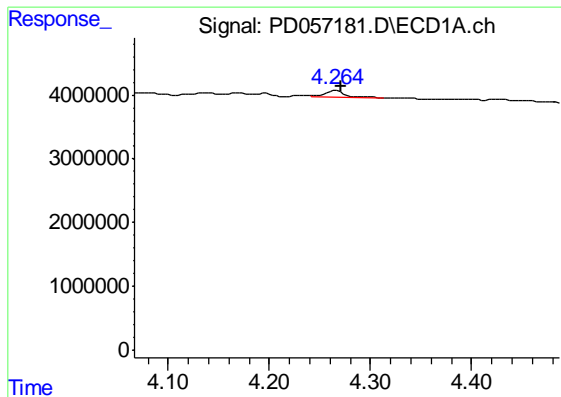
#3 gamma-BHC (Lindane)

R.T.: 3.995 min
 Delta R.T.: 0.008 min
 Response: 947468
 Conc: 0.75 ng/ml



#3 gamma-BHC (Lindane)

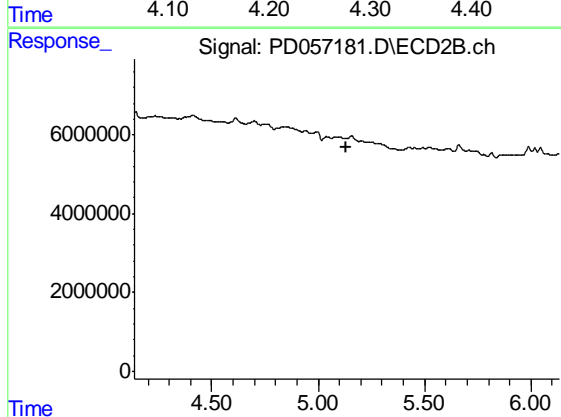
R.T.: 0.000 min
 Exp R.T. : 4.630 min
 Response: 0
 Conc: N.D.



#4 Heptachlor

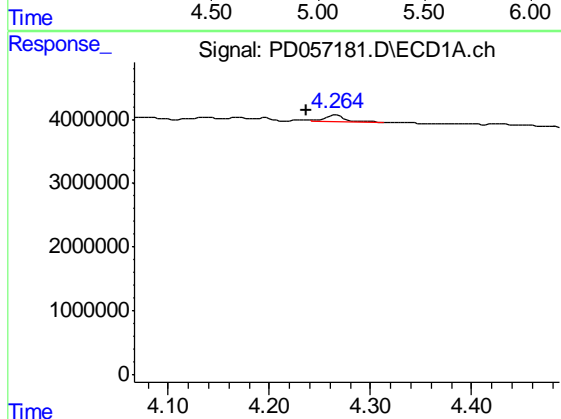
R.T.: 4.266 min
 Delta R.T.: -0.006 min
 Response: 1271374
 Conc: 1.66 ng/ml

Instrument :
 ECD_D
 ClientSampleId :
 C5AK6



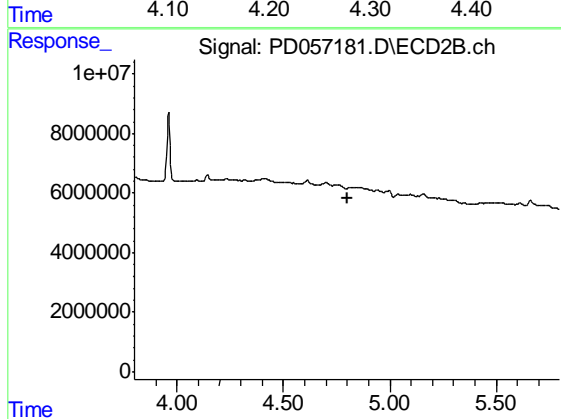
#4 Heptachlor

R.T.: 0.000 min
 Exp R.T. : 5.135 min
 Response: 0
 Conc: N.D.



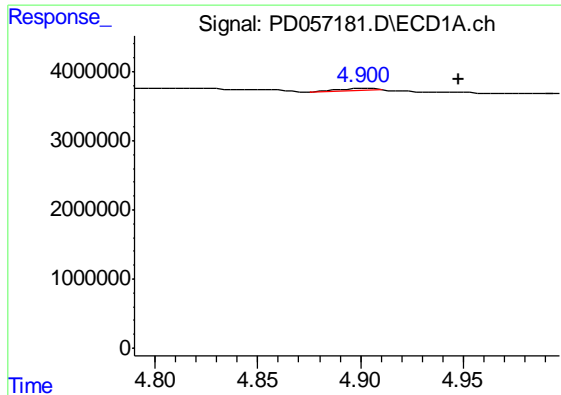
#6 beta-BHC

R.T.: 4.266 min
 Delta R.T.: 0.029 min
 Response: 1271374
 Conc: 2.55 ng/ml



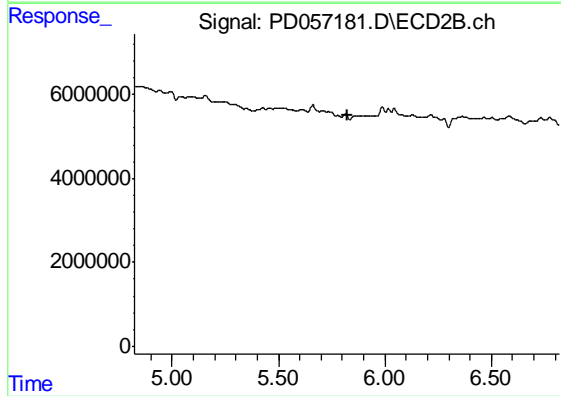
#6 beta-BHC

R.T.: 0.000 min
 Exp R.T. : 4.799 min
 Response: 0
 Conc: N.D.

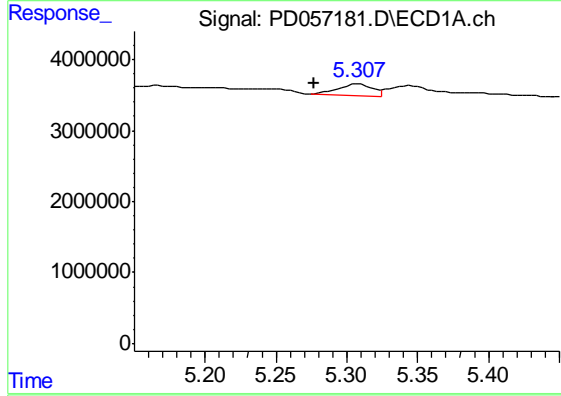


#8 Heptachlor epoxide
 R.T.: 4.902 min
 Delta R.T.: -0.045 min
 Response: 362232
 Conc: 0.35 ng/ml

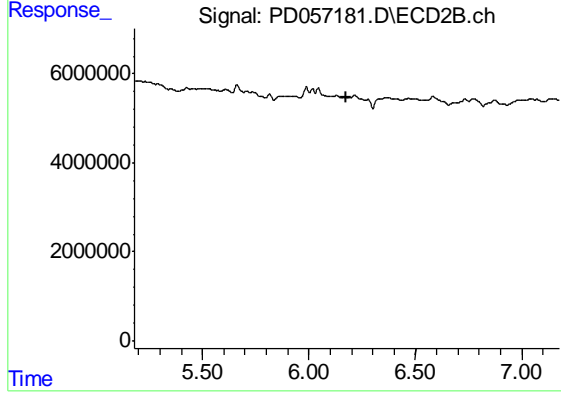
Instrument :
 ECD_D
 ClientSampleId :
 C5AK6



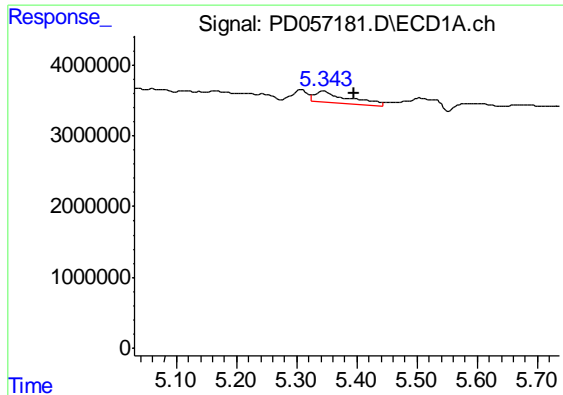
#8 Heptachlor epoxide
 R.T.: 0.000 min
 Exp R.T. : 5.823 min
 Response: 0
 Conc: N.D.



#9 Endosulfan I
 R.T.: 5.308 min
 Delta R.T.: 0.030 min
 Response: 2677685
 Conc: 2.66 ng/ml

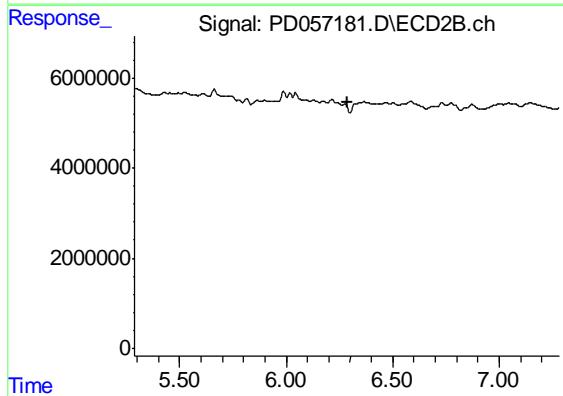


#9 Endosulfan I
 R.T.: 0.000 min
 Exp R.T. : 6.178 min
 Response: 0
 Conc: N.D.

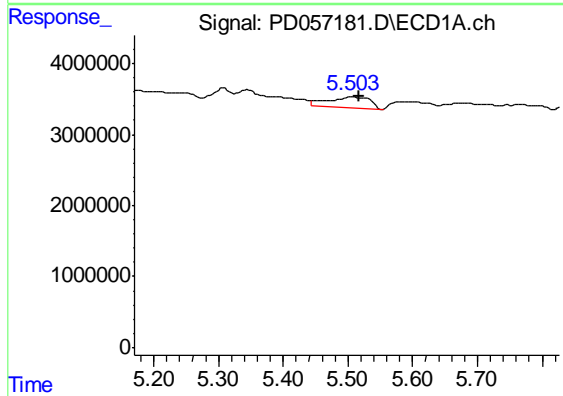


#12 4,4'-DDE
 R.T.: 5.345 min
 Delta R.T.: -0.050 min
 Response: 6786758
 Conc: 6.14 ng/ml

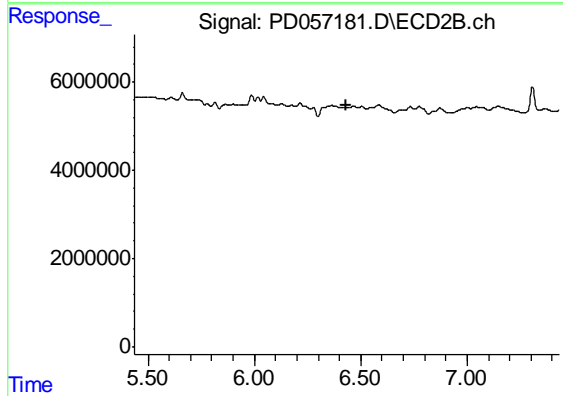
Instrument :
 ECD_D
 ClientSampleId :
 C5AK6



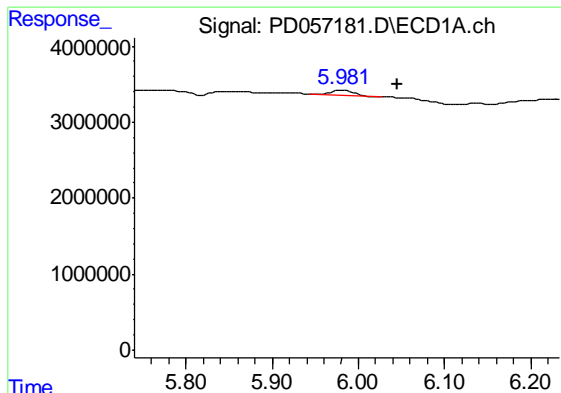
#12 4,4'-DDE
 R.T.: 0.000 min
 Exp R.T. : 6.286 min
 Response: 0
 Conc: N.D.



#13 Dieldrin
 R.T.: 5.505 min
 Delta R.T.: -0.012 min
 Response: 6890778
 Conc: 6.55 ng/ml



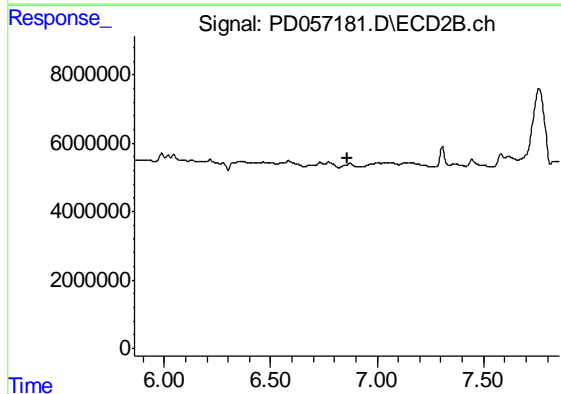
#13 Dieldrin
 R.T.: 0.000 min
 Exp R.T. : 6.434 min
 Response: 0
 Conc: N.D.



#15 Endosulfan II

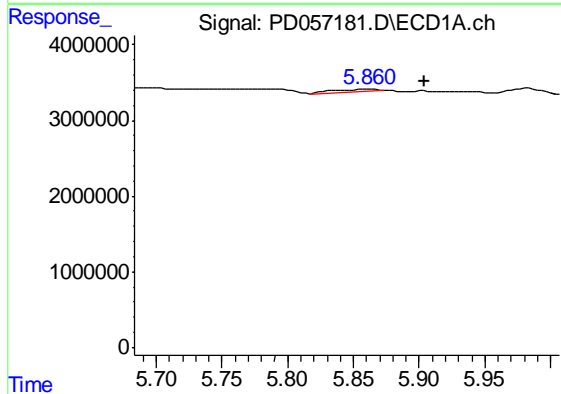
R.T.: 5.982 min
 Delta R.T.: -0.063 min
 Response: 1241159
 Conc: 1.30 ng/ml

Instrument :
 ECD_D
 ClientSampleId :
 C5AK6



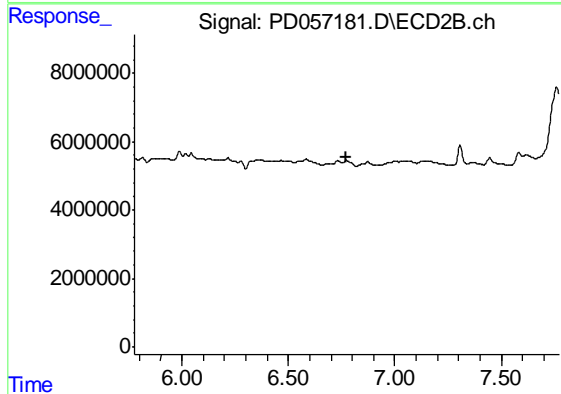
#15 Endosulfan II

R.T.: 0.000 min
 Exp R.T. : 6.860 min
 Response: 0
 Conc: N.D.



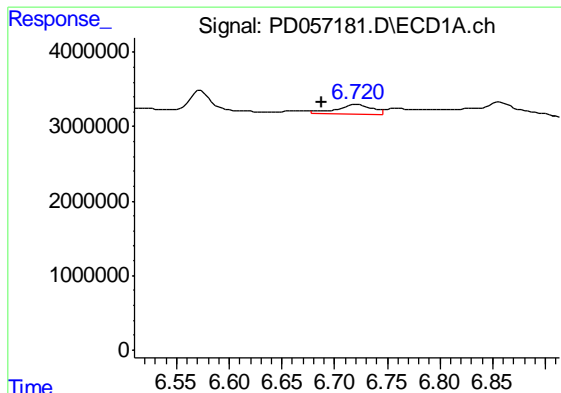
#16 4,4'-DDD

R.T.: 5.862 min
 Delta R.T.: -0.043 min
 Response: 284632
 Conc: 0.41 ng/ml



#16 4,4'-DDD

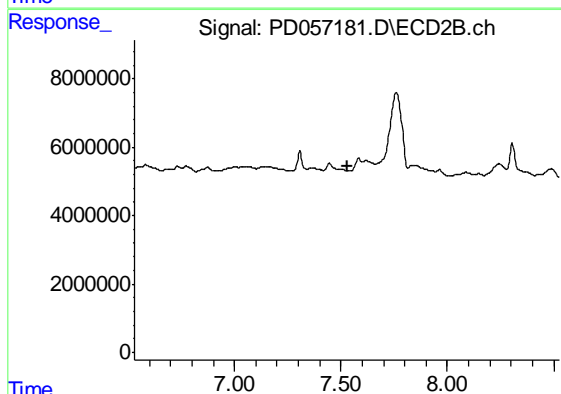
R.T.: 0.000 min
 Exp R.T. : 6.774 min
 Response: 0
 Conc: N.D.



#20 Methoxychlor

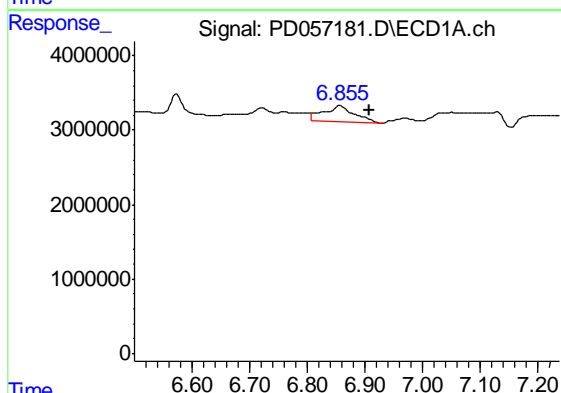
R.T.: 6.721 min
 Delta R.T.: 0.034 min
 Response: 3066310
 Conc: 10.95 ng/ml

Instrument :
 ECD_D
 ClientSampleId :
 C5AK6



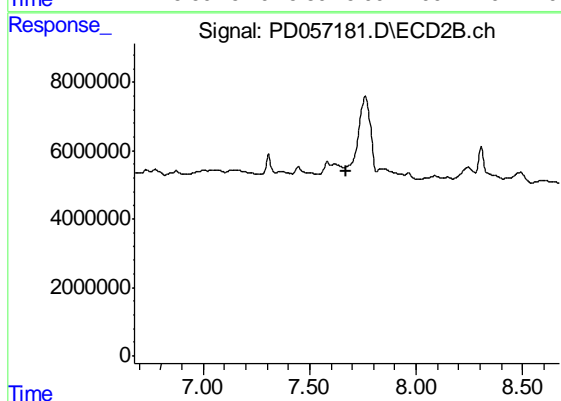
#20 Methoxychlor

R.T.: 0.000 min
 Exp R.T. : 7.528 min
 Response: 0
 Conc: N.D.



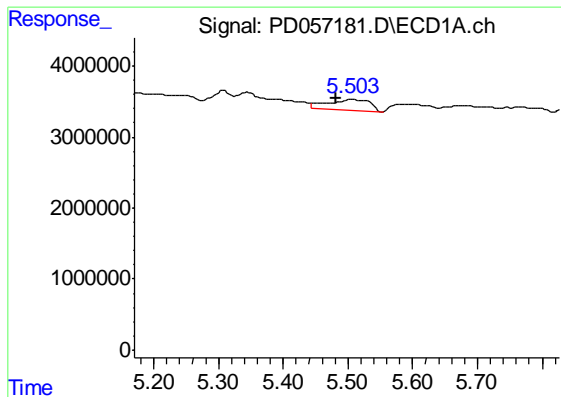
#21 Endrin ketone

R.T.: 6.857 min
 Delta R.T.: -0.051 min
 Response: 7891380
 Conc: 8.69 ng/ml



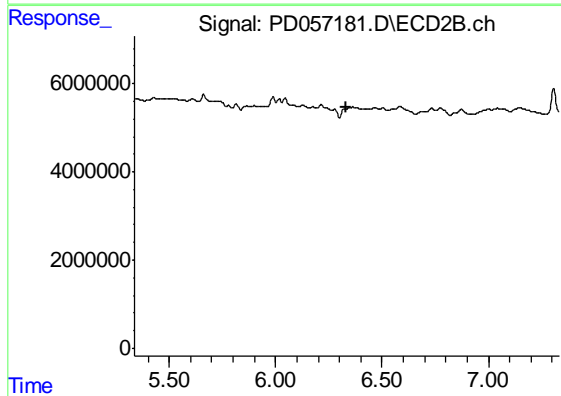
#21 Endrin ketone

R.T.: 0.000 min
 Exp R.T. : 7.674 min
 Response: 0
 Conc: N.D.

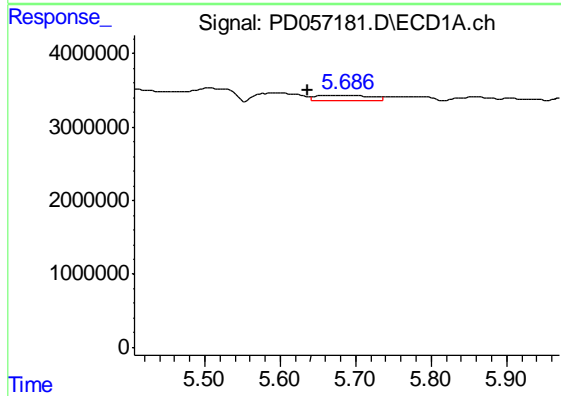


#22 Toxaphene-1
 R.T.: 5.505 min
 Delta R.T.: 0.023 min
 Response: 6890778
 Conc: 1143.41 ng/ml

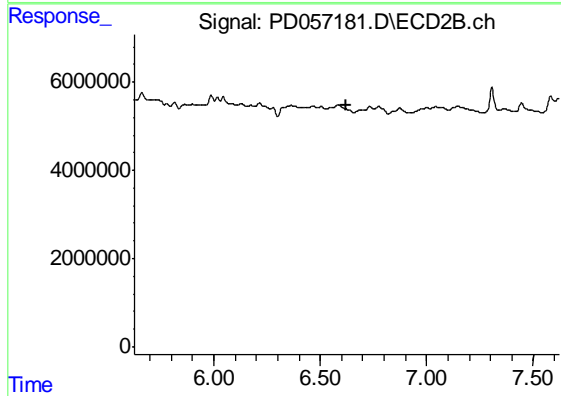
Instrument :
 ECD_D
 ClientSampleId :
 C5AK6



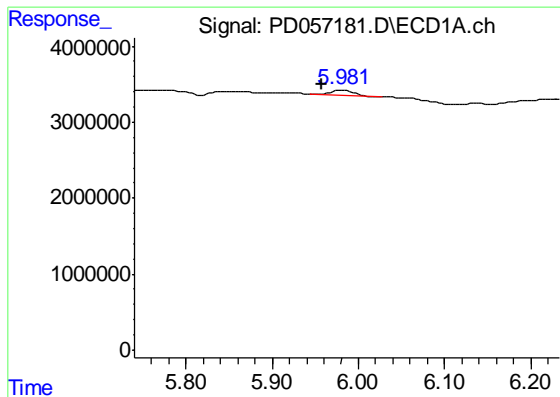
#22 Toxaphene-1
 R.T.: 0.000 min
 Exp R.T. : 6.334 min
 Response: 0
 Conc: N.D.



#23 Toxaphene-2
 R.T.: 5.687 min
 Delta R.T.: 0.050 min
 Response: 4104746
 Conc: 717.10 ng/ml



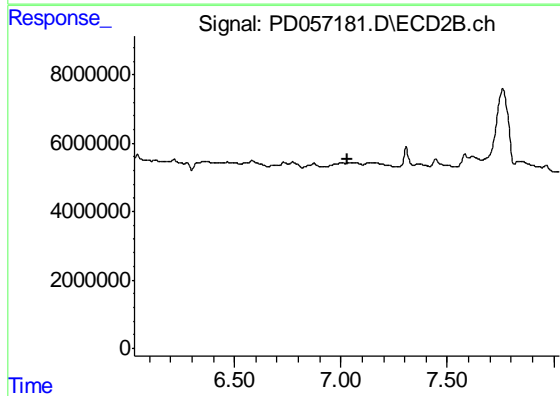
#23 Toxaphene-2
 R.T.: 0.000 min
 Exp R.T. : 6.624 min
 Response: 0
 Conc: N.D.



#24 Toxaphene-3

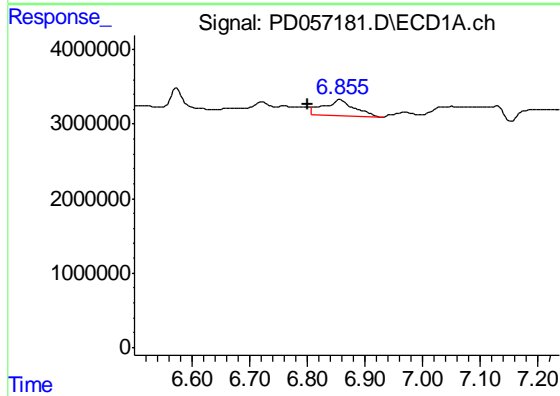
R.T.: 5.982 min
 Delta R.T.: 0.024 min
 Response: 1241159
 Conc: 248.08 ng/ml

Instrument :
 ECD_D
 ClientSampleId :
 C5AK6



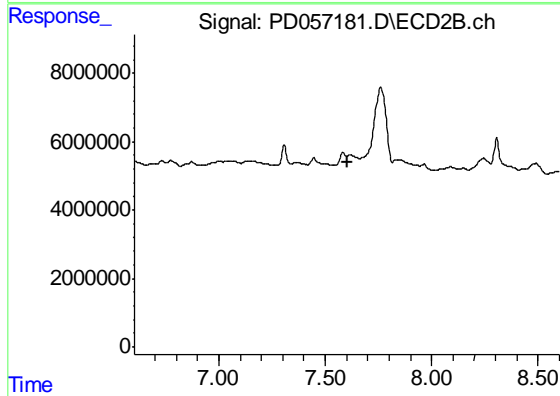
#24 Toxaphene-3

R.T.: 0.000 min
 Exp R.T. : 7.028 min
 Response: 0
 Conc: N.D.



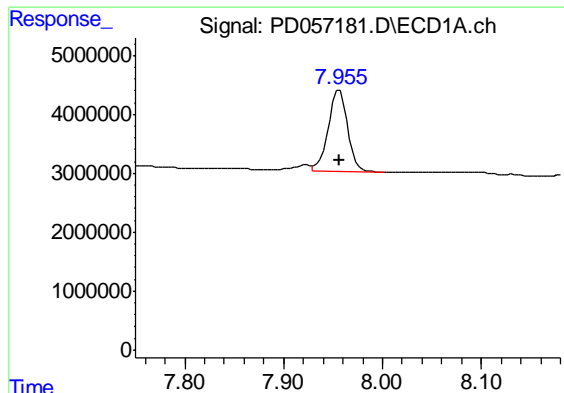
#26 Toxaphene-5

R.T.: 6.857 min
 Delta R.T.: 0.057 min
 Response: 7891380
 Conc: 452.05 ng/ml



#26 Toxaphene-5

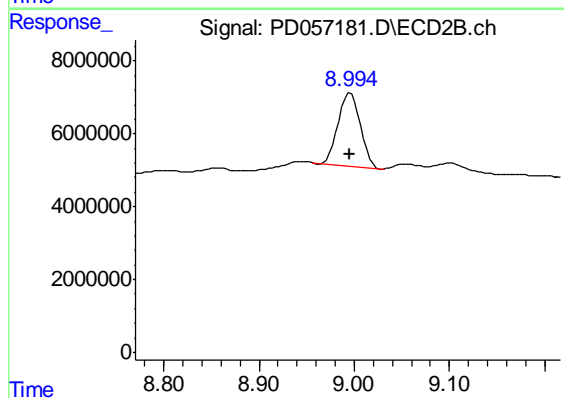
R.T.: 0.000 min
 Exp R.T. : 7.602 min
 Response: 0
 Conc: N.D.



#27 Decachlorobiphenyl

R.T.: 7.956 min
Delta R.T.: 0.000 min
Response: 18553810
Conc: 17.88 ng/ml

Instrument :
ECD_D
ClientSampleId :
C5AK6



#27 Decachlorobiphenyl

R.T.: 8.996 min
Delta R.T.: 0.000 min
Response: 33035949
Conc: 14.61 ng/ml