

Data Path : Z:\pestpcbsrv\HPCHEM1\ECD_D\Data\PD021020\
 Data File : PD057172.D
 Signal(s) : Signal #1: ECD1A.ch Signal #2: ECD2B.ch
 Acq On : 10 Feb 2020 20:08
 Operator : AJ\MA
 Sample : L1302-20
 Misc :
 ALS Vial : 31 Sample Multiplier: 1

Instrument :
 ECD_D
ClientSampled :
 C5AS6

Manual Integrations
APPROVED
 mohammad
 2/12/2020 3:30:42 PM

Integration File signal 1: autoint1.e
 Integration File signal 2: autoint2.e
 Quant Time: Feb 11 06:34:17 2020
 Quant Method : Z:\pestpcbsrv\HPCHEM1\ECD_D\Method\PD021020CLP.M
 Quant Title : GC Extractables
 QLast Update : Tue Feb 11 04:58:40 2020
 Response via : Initial Calibration
 Integrator: ChemStation

Volume Inj. : 1 µl
 Signal #1 Phase : ZB-MR2 Signal #2 Phase: ZB-MR1
 Signal #1 Info : 30M x 0.32mm x0.2 Signal #2 Info : 30M x 0.32mm x 0.50µm

Compound	RT#1	RT#2	Resp#1	Resp#2	ng/ml	ng/ml

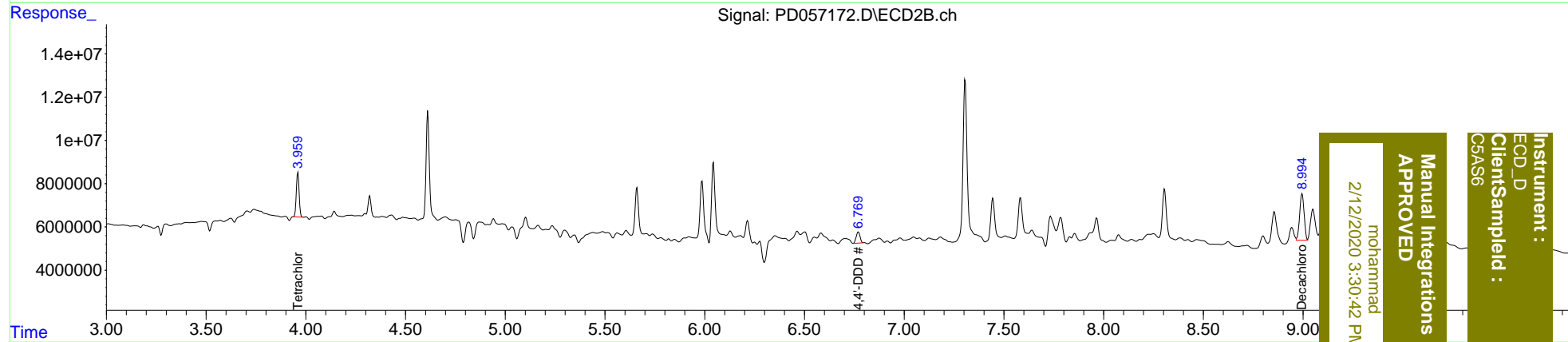
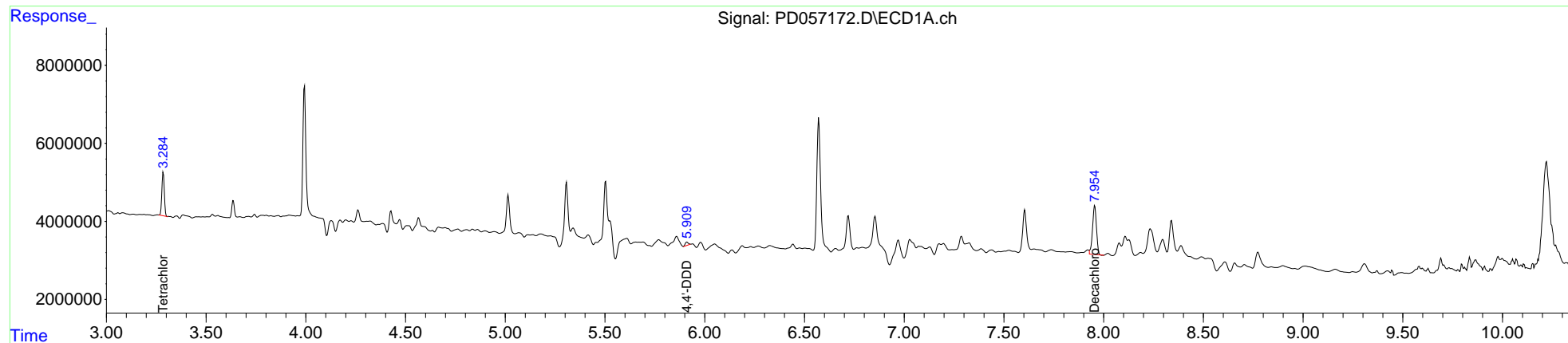
System Monitoring Compounds						
1) SA Tetrachlo...	3.285	3.960	9591941	20093212	11.547	10.783
27) SA Decachlor...	7.955	8.994	17133848	33325818	16.516	14.742m
Target Compounds						
16) A 4,4'-DDD	5.909	6.769	882507	6987363	1.274m	3.389m#

(f)=RT Delta > 1/2 Window (#)=Amounts differ by > 25% (m)=manual int.

Data Path : Z:\pestpcbsrv\HPCHEM1\ECD_D\Data\PD021020\
 Data File : PD057172.D
 Signal(s) : Signal #1: ECD1A.ch Signal #2: ECD2B.ch
 Acq On : 10 Feb 2020 20:08
 Operator : AJ\MA
 Sample : L1302-20
 Misc :
 ALS Vial : 31 Sample Multiplier: 1

Integration File signal 1: autoint1.e
 Integration File signal 2: autoint2.e
 Quant Time: Feb 11 06:34:17 2020
 Quant Method : Z:\pestpcbsrv\HPCHEM1\ECD_D\Method\PD021020CLP.M
 Quant Title : GC Extractables
 QLast Update : Tue Feb 11 04:58:40 2020
 Response via : Initial Calibration
 Integrator: ChemStation

Volume Inj. : 1 µl
 Signal #1 Phase : ZB-MR2 Signal #2 Phase: ZB-MR1
 Signal #1 Info : 30M x 0.32mm x0.2 Signal #2 Info : 30M x 0.32mm x 0.50µm



Instrument : ECD_D
 Client/SampleId : C5AS6
 Manual Integrations APPROVED
 mohammad
 2/12/2020 3:30:42 PM