

Data Path : Z:\pestpcbsrv\HPCHEM1\ECD_D\Data\PD021120\
 Data File : PD057200.D
 Signal(s) : Signal #1: ECD1A.ch Signal #2: ECD2B.ch
 Acq On : 11 Feb 2020 19:42
 Operator : AJ\MA
 Sample : PIBLK27
 Misc :
 ALS Vial : 2 Sample Multiplier: 1

Instrument :
 ECD_D
 ClientSampleID :
 PIBLK27

Integration File signal 1: autoint1.e
 Integration File signal 2: autoint2.e
 Quant Time: Feb 13 02:53:00 2020
 Quant Method : Z:\pestpcbsrv\HPCHEM1\ECD_D\Method\PD021020CLP.M
 Quant Title : GC Extractables
 QLast Update : Tue Feb 11 04:58:40 2020
 Response via : Initial Calibration
 Integrator: ChemStation

Volume Inj. : 1 µl
 Signal #1 Phase : ZB-MR2 Signal #2 Phase: ZB-MR1
 Signal #1 Info : 30M x 0.32mm x0.2 Signal #2 Info : 30M x 0.32mm x 0.50µm

Compound	RT#1	RT#2	Resp#1	Resp#2	ng/ml	ng/ml

System Monitoring Compounds						
1) SA Tetrachlo...	3.287	3.961	18875412	45910546	22.722	24.637
27) SA Decachlor...	7.959	8.999	39748937	80248256	38.315	35.499
Target Compounds						
3) MA gamma-BHC...	0.000	4.594f	0	70360726	N.D.	24.833

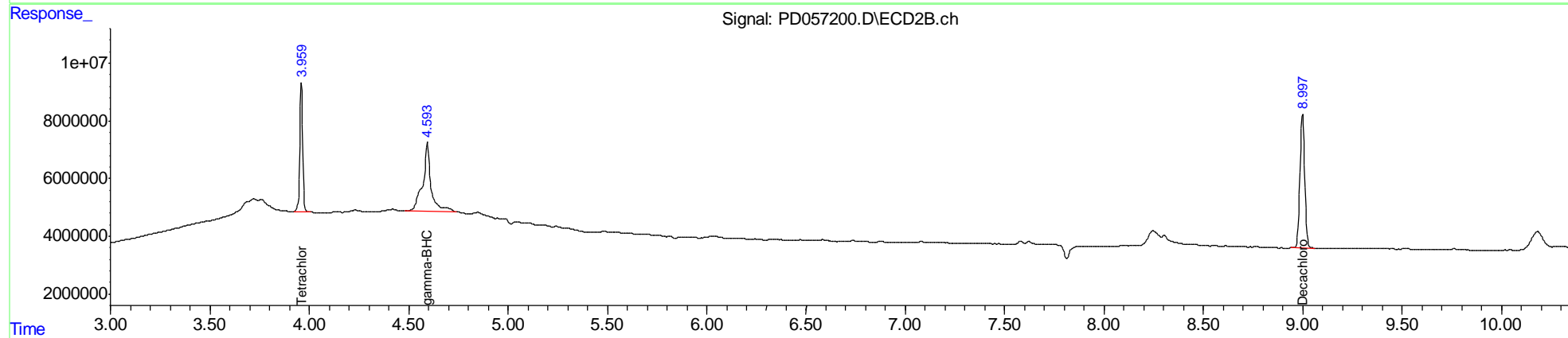
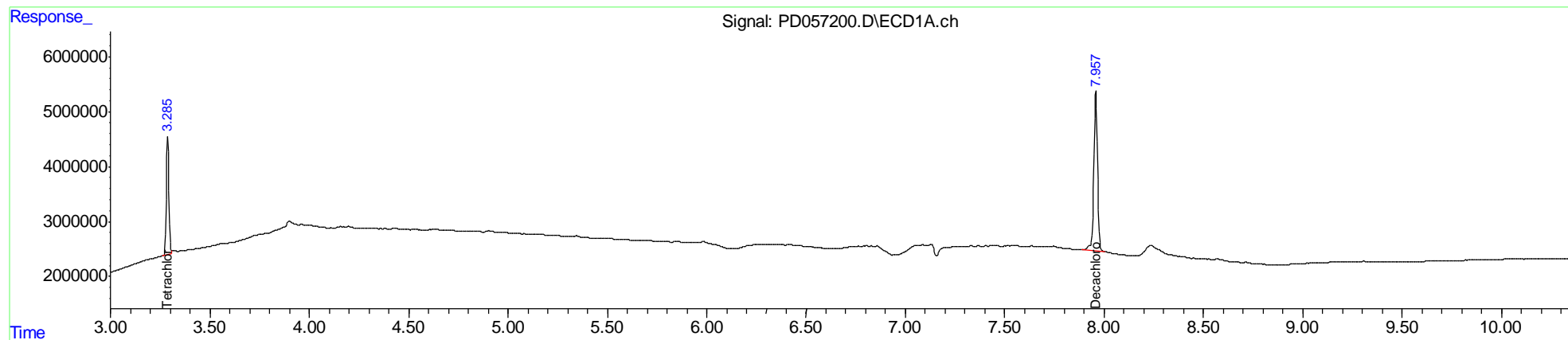
(f)=RT Delta > 1/2 Window (#)=Amounts differ by > 25% (m)=manual int.

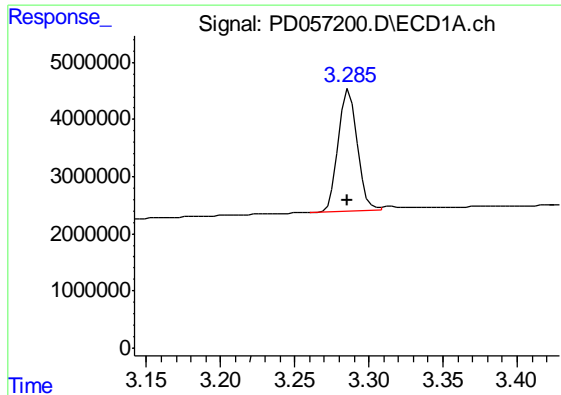
Data Path : Z:\pestpcbsrv\HPCHEM1\ECD_D\Data\PD021120\
 Data File : PD057200.D
 Signal(s) : Signal #1: ECD1A.ch Signal #2: ECD2B.ch
 Acq On : 11 Feb 2020 19:42
 Operator : AJ\MA
 Sample : PIBLK27
 Misc :
 ALS Vial : 2 Sample Multiplier: 1

Instrument :
 ECD_D
 ClientSampled :
 PIBLK27

Integration File signal 1: autoint1.e
 Integration File signal 2: autoint2.e
 Quant Time: Feb 13 02:53:00 2020
 Quant Method : Z:\pestpcbsrv\HPCHEM1\ECD_D\Method\PD021020CLP.M
 Quant Title : GC Extractables
 QLast Update : Tue Feb 11 04:58:40 2020
 Response via : Initial Calibration
 Integrator: ChemStation

Volume Inj. : 1 µl
 Signal #1 Phase : ZB-MR2 Signal #2 Phase: ZB-MR1
 Signal #1 Info : 30M x 0.32mm x0.2 Signal #2 Info : 30M x 0.32mm x 0.50µm

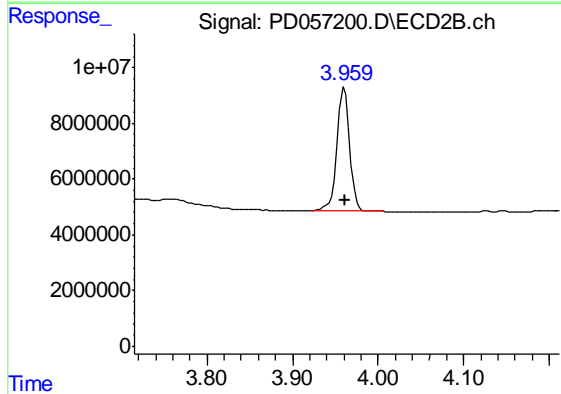




#1 Tetrachloro-m-xylene

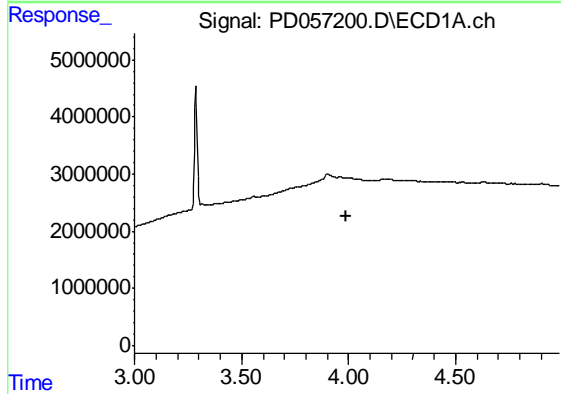
R.T.: 3.287 min
 Delta R.T.: 0.000 min
 Response: 18875412
 Conc: 22.72 ng/ml

Instrument :
 ECD_D
 ClientSampleId :
 PIBLK27



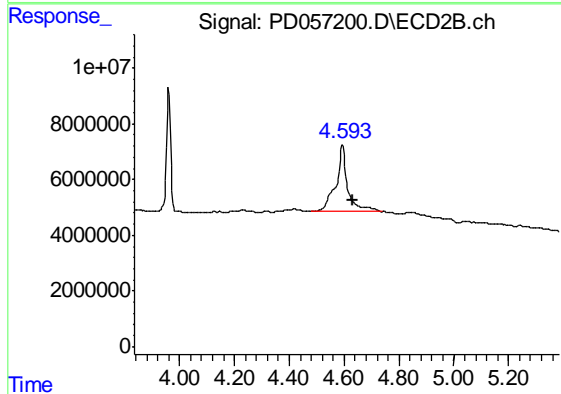
#1 Tetrachloro-m-xylene

R.T.: 3.961 min
 Delta R.T.: 0.000 min
 Response: 45910546
 Conc: 24.64 ng/ml



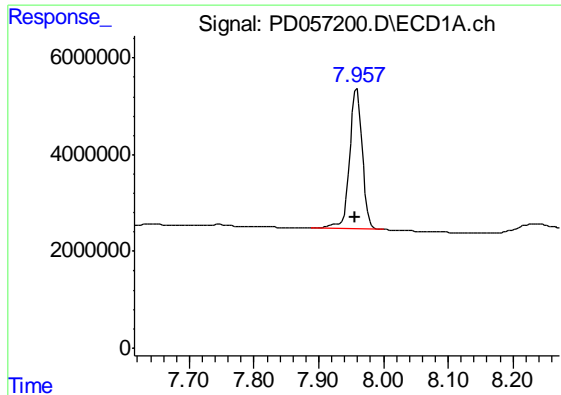
#3 gamma-BHC (Lindane)

R.T.: 0.000 min
 Exp R.T. : 3.987 min
 Response: 0
 Conc: N.D.



#3 gamma-BHC (Lindane)

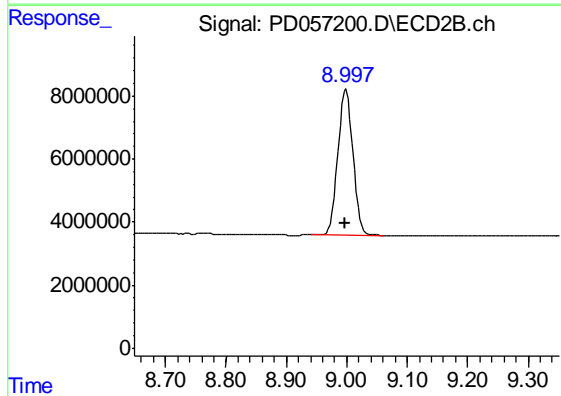
R.T.: 4.594 min
 Delta R.T.: -0.036 min
 Response: 70360726
 Conc: 24.83 ng/ml



#27 Decachlorobiphenyl

R.T.: 7.959 min
Delta R.T.: 0.003 min
Response: 39748937
Conc: 38.31 ng/ml

Instrument :
ECD_D
ClientSampleId :
PIBLK27



#27 Decachlorobiphenyl

R.T.: 8.999 min
Delta R.T.: 0.003 min
Response: 80248256
Conc: 35.50 ng/ml