

Data Path : Z:\pestpcbsrv\HPCHEM1\ECD_D\Data\PD021121\
 Data File : PD061204.D
 Signal(s) : Signal #1: ECD1A.ch Signal #2: ECD2B.ch
 Acq On : 11 Feb 2021 14:35
 Operator : DD\AJ
 Sample : M1310-12
 Misc :
 ALS Vial : 22 Sample Multiplier: 1

Instrument :
 ECD_D
 ClientSampleId :
 C0A39

Integration File signal 1: autoint1.e
 Integration File signal 2: autoint2.e
 Quant Time: Feb 12 04:18:15 2021
 Quant Method : Z:\pestpcbsrv\HPCHEM1\ECD_D\Method\PD012521CLP.M
 Quant Title : GC Extractables
 QLast Update : Tue Jan 26 00:33:50 2021
 Response via : Initial Calibration
 Integrator: ChemStation

Volume Inj. : 1 µl
 Signal #1 Phase : ZB-MR2 Signal #2 Phase: ZB-MR1
 Signal #1 Info : 30M x 0.32mm x0.2 Signal #2 Info : 30M x 0.32mm x 0.50µm

Compound	RT#1	RT#2	Resp#1	Resp#2	ng/ml	ng/ml

System Monitoring Compounds						
1) SA Tetrachlo...	3.495	4.020	4505667	13681288	4.439	1.912 #
27) SA Decachlor...	8.269	9.105	19598588	-19496384	15.554	N.D. #
Target Compounds						
2) A alpha-BHC	3.963f	4.403	873882	-1236596	0.586	N.D. #
3) MA gamma-BHC...	4.227	4.677	32793137	159.1E6	22.413	15.684 #
4) MA Heptachlor	4.544	5.236f	1087600	4140964	0.720	0.393 #
5) MB Aldrin	4.773	5.509	4301561	9668279	3.018	0.985 #
6) B beta-BHC	4.504f	4.888	2045262	15455963	3.281	3.615
7) B delta-BHC	4.674	5.105	1733014	5509531	1.232	0.540 #
8) B Heptachlo...	5.221	5.904	2001224	1332691	1.471	0.154 #
9) A Endosulfan I	5.584	6.263	68064965	19759566	51.903	2.293 #
10) B trans-Chl...	5.442	6.119	3148540	896.0E6	2.226	95.308 #
11) B cis-Chlor...	5.520	6.205	11085306	8182886	8.079	0.921 #
12) B 4,4'-DDE	5.692	6.356	5854033	21401791	4.158	2.410 #
14) MA Endrin	6.057	6.758	7124263	104.5E6	5.731	14.151 #
15) B Endosulfa...	6.338	6.931	10071605	39280846	9.269	5.458 #
16) A 4,4'-DDD	6.190	6.851	14871094	161.9E6	12.670	22.752 #
17) MA 4,4'-DDT	6.428	7.165	1816480	14081536	1.484	1.939 #
19) B Endosulfa...	6.737	7.264	8148990	19042462	7.809	2.701 #
20) A Methoxychlor	7.020f	7.598	91749028	32435509	146.988	9.827 #
21) B Endrin ke...	7.155f	7.759	69389656	8777279	53.697	1.206 #
22) Toxaphene-1	5.740	6.435	686306	92817878	57.600	1702.935 #
23) Toxaphene-2	5.964	6.692	9268710	15325403	748.995	233.031 #
24) Toxaphene-3	6.238	7.135	10857605	18098928	784.039	188.919 #
25) Toxaphene-4	6.338	7.211	10071605	40629701	313.040	155.174 #
26) Toxaphene-5	7.091	7.669	2699029	274.6E6	77.684	2373.443 #

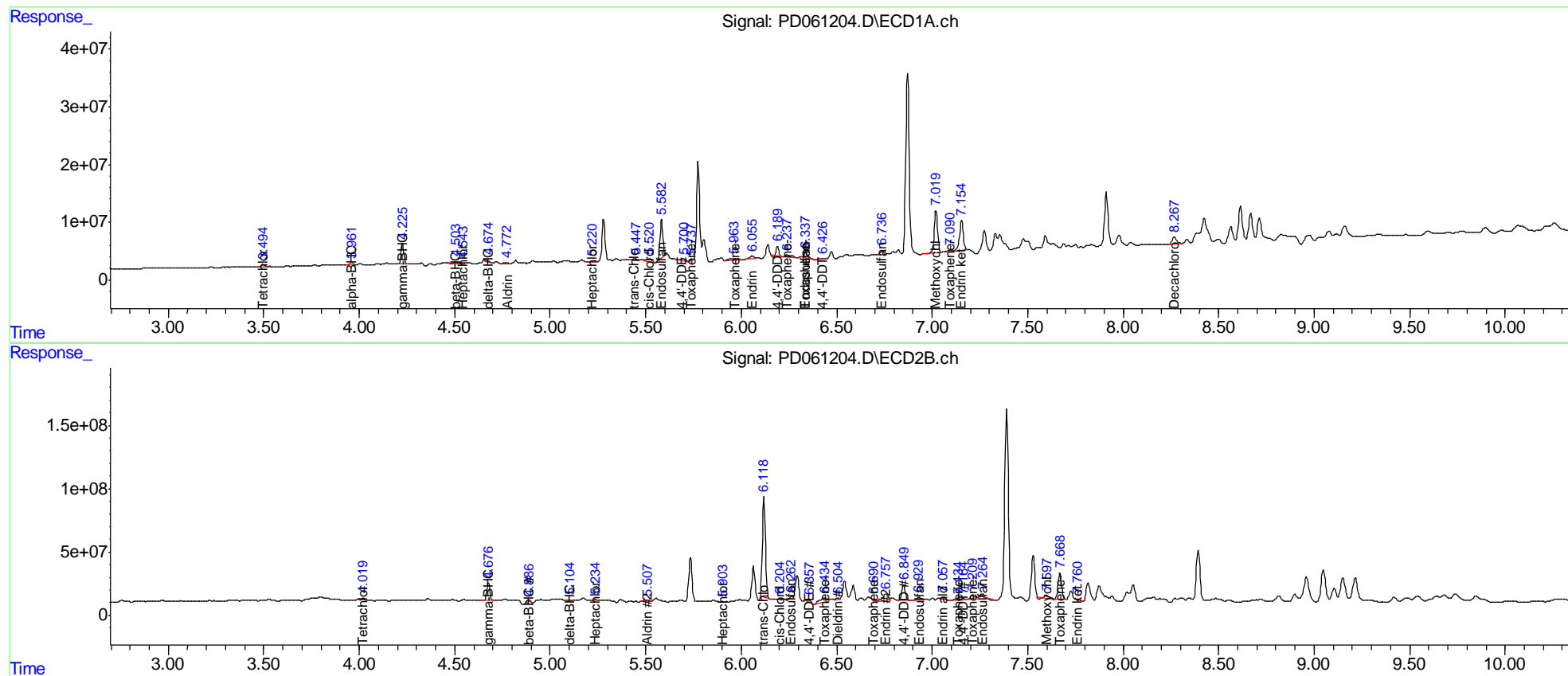
(f)=RT Delta > 1/2 Window (#)=Amounts differ by > 25% (m)=manual int.

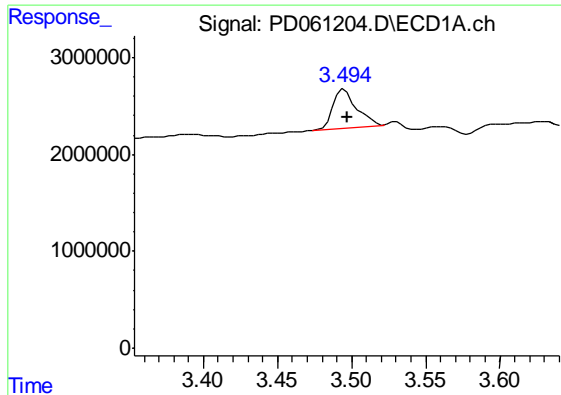
Data Path : Z:\pestpcbsrv\HPCHEM1\ECD_D\Data\PD021121\
 Data File : PD061204.D
 Signal(s) : Signal #1: ECD1A.ch Signal #2: ECD2B.ch
 Acq On : 11 Feb 2021 14:35
 Operator : DD\AJ
 Sample : M1310-12
 Misc :
 ALS Vial : 22 Sample Multiplier: 1

Instrument :
 ECD_D
 Client Sampled :
 C0A39

Integration File signal 1: autoint1.e
 Integration File signal 2: autoint2.e
 Quant Time: Feb 12 04:18:15 2021
 Quant Method : Z:\pestpcbsrv\HPCHEM1\ECD_D\Method\PD012521CLP.M
 Quant Title : GC Extractables
 QLast Update : Tue Jan 26 00:33:50 2021
 Response via : Initial Calibration
 Integrator: ChemStation

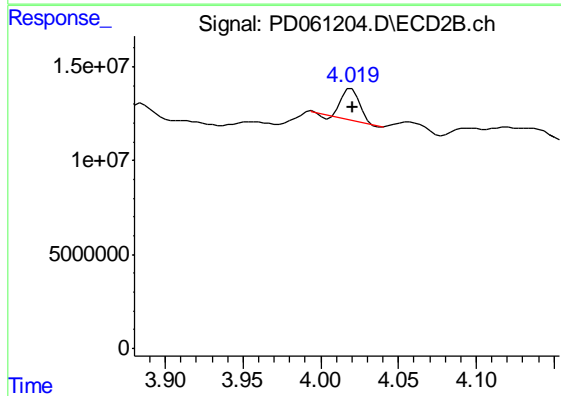
Volume Inj. : 1 µl
 Signal #1 Phase : ZB-MR2 Signal #2 Phase: ZB-MR1
 Signal #1 Info : 30M x 0.32mm x0.2 Signal #2 Info : 30M x 0.32mm x 0.50µm



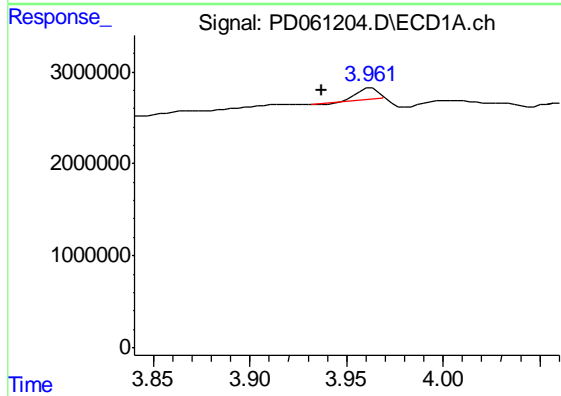


#1 Tetrachloro-m-xylene
 R.T.: 3.495 min
 Delta R.T.: -0.002 min
 Response: 4505667
 Conc: 4.44 ng/ml

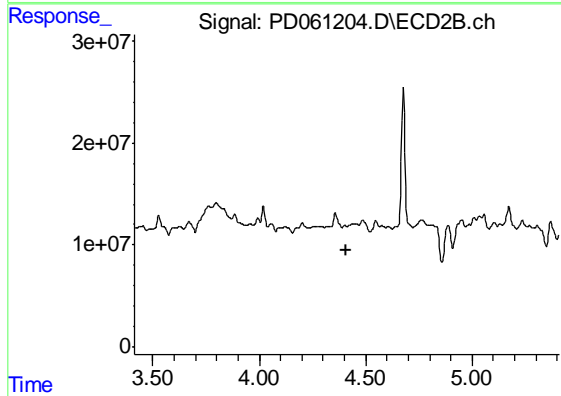
Instrument :
 ECD_D
 ClientSampleId :
 C0A39



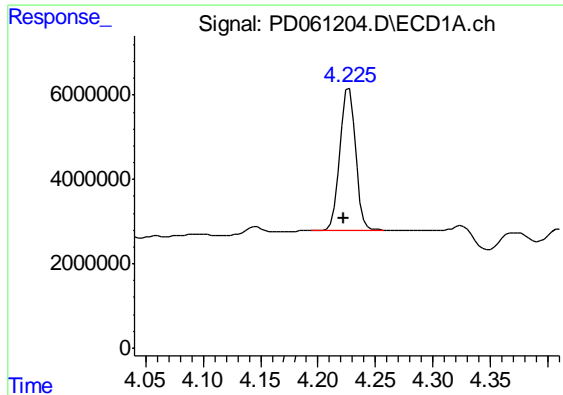
#1 Tetrachloro-m-xylene
 R.T.: 4.020 min
 Delta R.T.: 0.000 min
 Response: 13681288
 Conc: 1.91 ng/ml



#2 alpha-BHC
 R.T.: 3.963 min
 Delta R.T.: 0.026 min
 Response: 873882
 Conc: 0.59 ng/ml



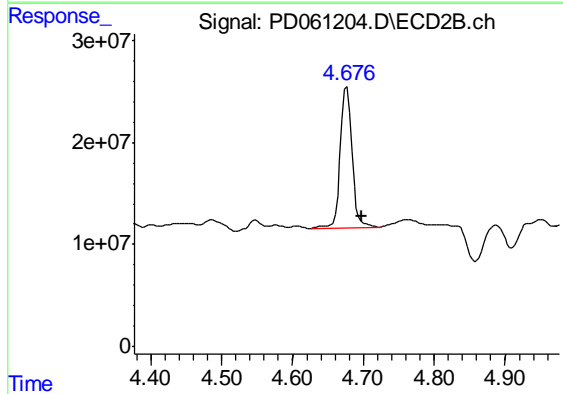
#2 alpha-BHC
 R.T.: 4.403 min
 Delta R.T.: -0.009 min
 Response: -1236596
 Conc: N.D.



#3 gamma-BHC (Lindane)

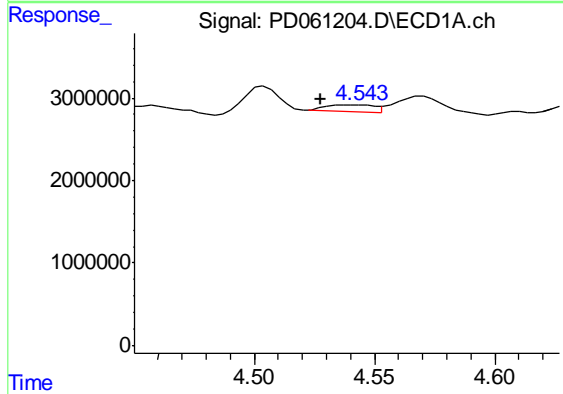
R.T.: 4.227 min
 Delta R.T.: 0.005 min
 Response: 32793137
 Conc: 22.41 ng/ml

Instrument :
 ECD_D
 ClientSampleId :
 C0A39



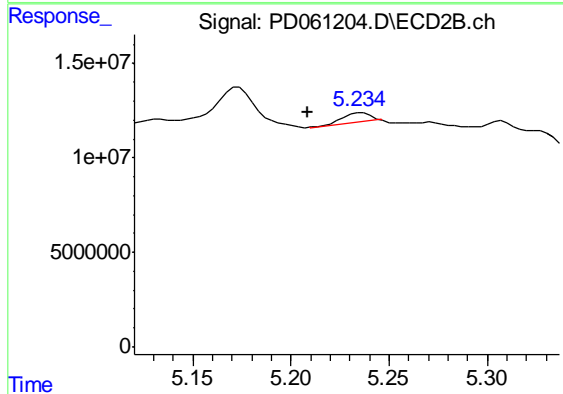
#3 gamma-BHC (Lindane)

R.T.: 4.677 min
 Delta R.T.: -0.020 min
 Response: 159096736
 Conc: 15.68 ng/ml



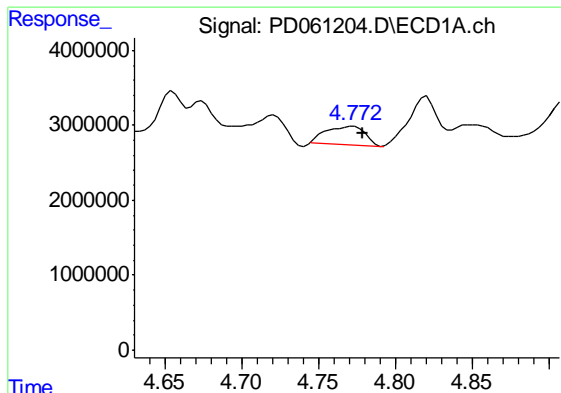
#4 Heptachlor

R.T.: 4.544 min
 Delta R.T.: 0.017 min
 Response: 1087600
 Conc: 0.72 ng/ml



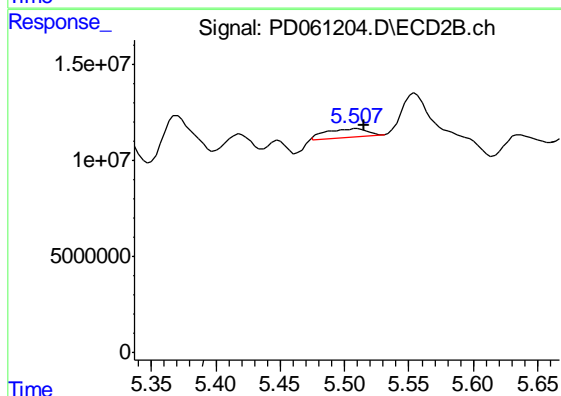
#4 Heptachlor

R.T.: 5.236 min
 Delta R.T.: 0.027 min
 Response: 4140964
 Conc: 0.39 ng/ml

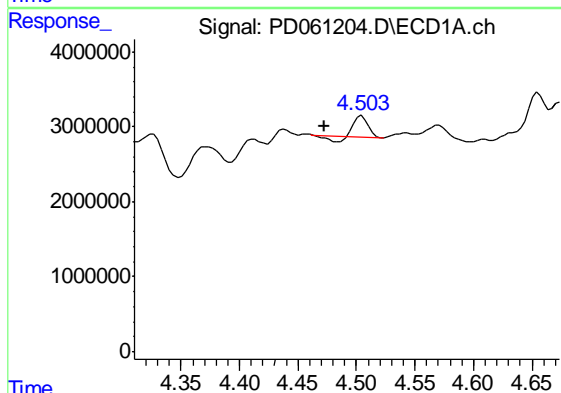


#5 Aldrin
 R.T.: 4.773 min
 Delta R.T.: -0.006 min
 Response: 4301561
 Conc: 3.02 ng/ml

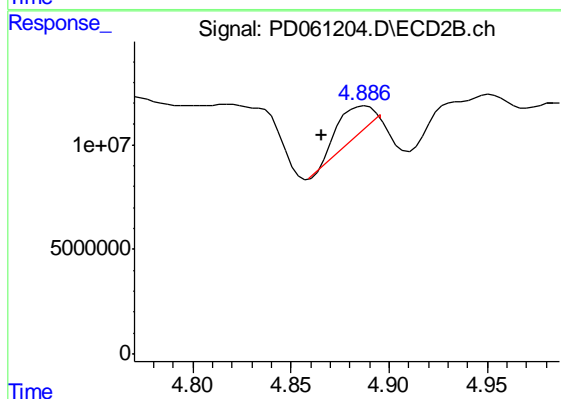
Instrument :
 ECD_D
 ClientSampled :
 C0A39



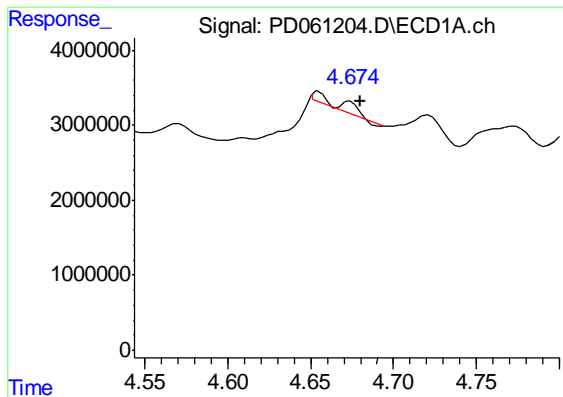
#5 Aldrin
 R.T.: 5.509 min
 Delta R.T.: -0.006 min
 Response: 9668279
 Conc: 0.98 ng/ml



#6 beta-BHC
 R.T.: 4.504 min
 Delta R.T.: 0.031 min
 Response: 2045262
 Conc: 3.28 ng/ml



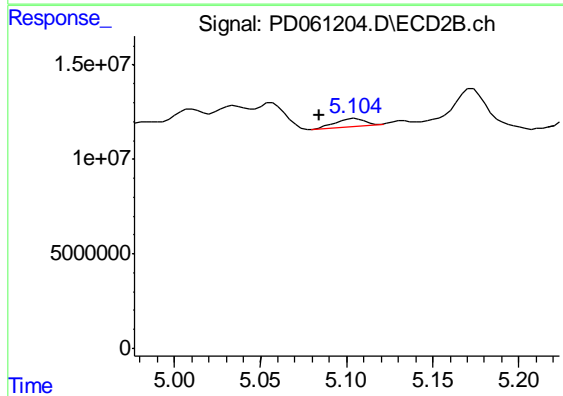
#6 beta-BHC
 R.T.: 4.888 min
 Delta R.T.: 0.022 min
 Response: 15455963
 Conc: 3.62 ng/ml



#7 delta-BHC

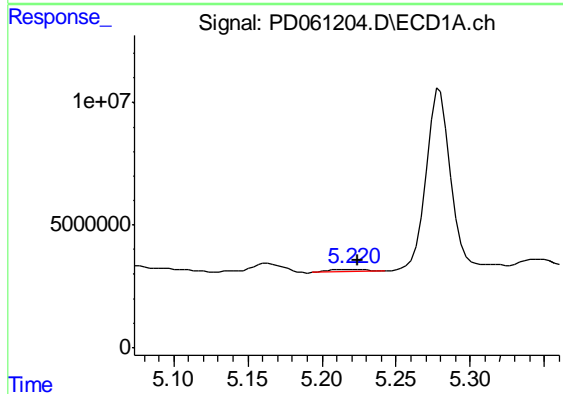
R.T.: 4.674 min
 Delta R.T.: -0.006 min
 Response: 1733014
 Conc: 1.23 ng/ml

Instrument :
 ECD_D
 ClientSampleId :
 C0A39



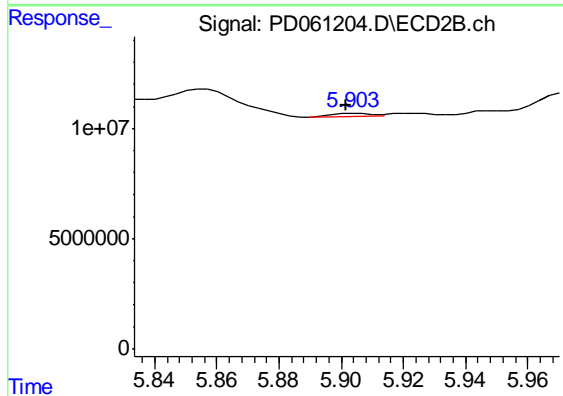
#7 delta-BHC

R.T.: 5.105 min
 Delta R.T.: 0.021 min
 Response: 5509531
 Conc: 0.54 ng/ml



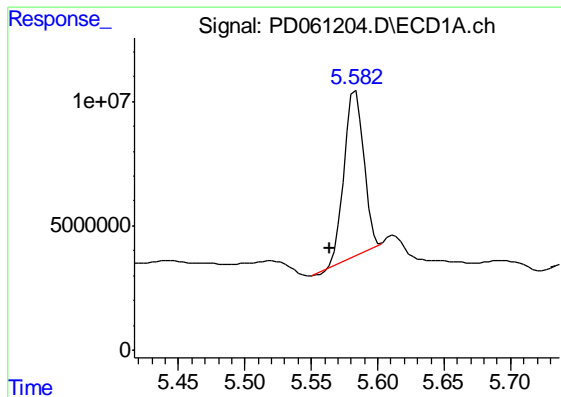
#8 Heptachlor epoxide

R.T.: 5.221 min
 Delta R.T.: -0.002 min
 Response: 2001224
 Conc: 1.47 ng/ml



#8 Heptachlor epoxide

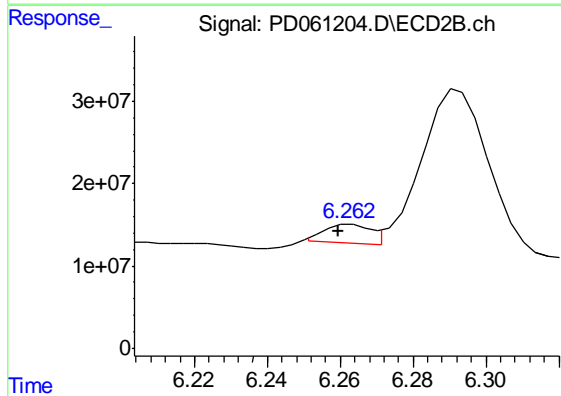
R.T.: 5.904 min
 Delta R.T.: 0.003 min
 Response: 1332691
 Conc: 0.15 ng/ml



#9 Endosulfan I

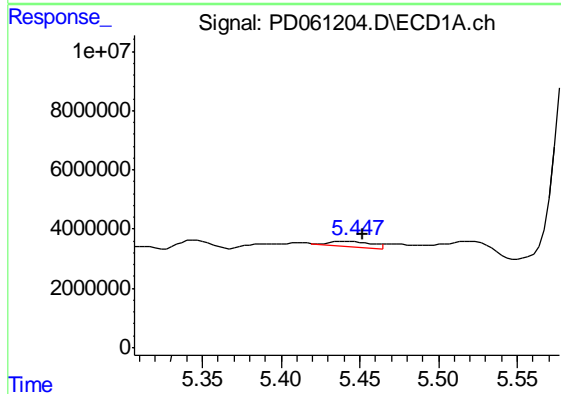
R.T.: 5.584 min
 Delta R.T.: 0.019 min
 Response: 68064965
 Conc: 51.90 ng/ml

Instrument :
 ECD_D
 ClientSampled :
 C0A39



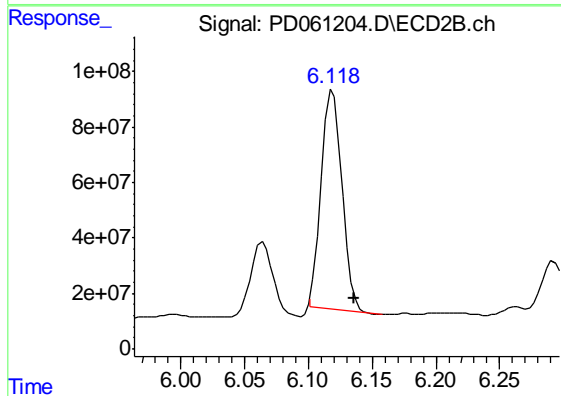
#9 Endosulfan I

R.T.: 6.263 min
 Delta R.T.: 0.003 min
 Response: 19759566
 Conc: 2.29 ng/ml



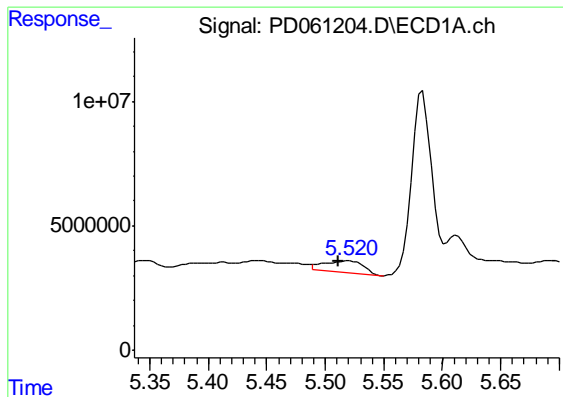
#10 trans-Chlordane

R.T.: 5.442 min
 Delta R.T.: -0.010 min
 Response: 3148540
 Conc: 2.23 ng/ml



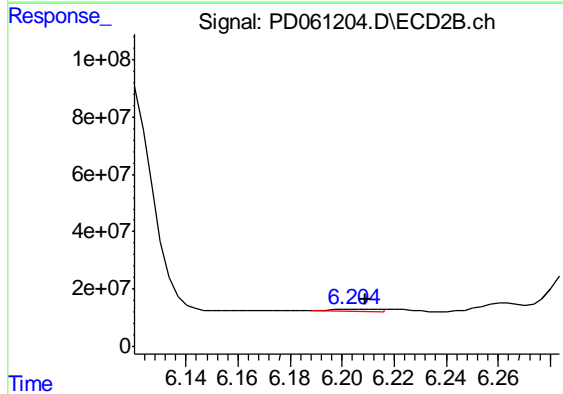
#10 trans-Chlordane

R.T.: 6.119 min
 Delta R.T.: -0.017 min
 Response: 895987370
 Conc: 95.31 ng/ml

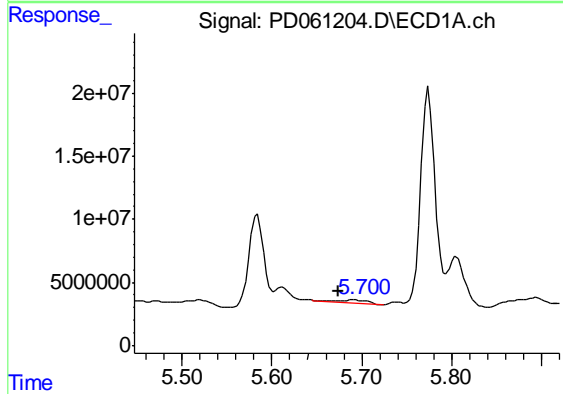


#11 cis-Chlordane
 R.T.: 5.520 min
 Delta R.T.: 0.009 min
 Response: 11085306
 Conc: 8.08 ng/ml

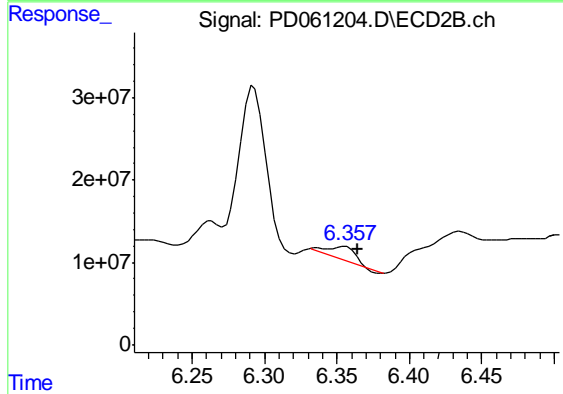
Instrument :
 ECD_D
 ClientSampled :
 C0A39



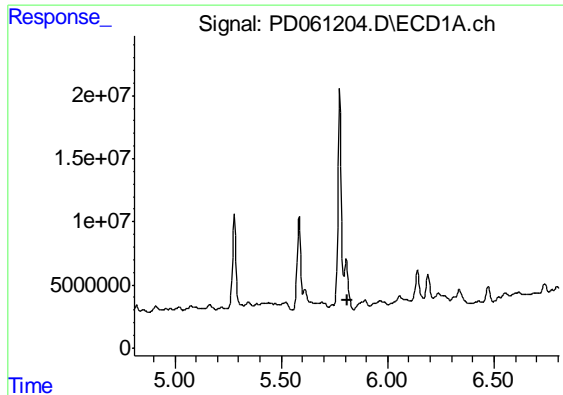
#11 cis-Chlordane
 R.T.: 6.205 min
 Delta R.T.: -0.004 min
 Response: 8182886
 Conc: 0.92 ng/ml



#12 4,4'-DDE
 R.T.: 5.692 min
 Delta R.T.: 0.017 min
 Response: 5854033
 Conc: 4.16 ng/ml



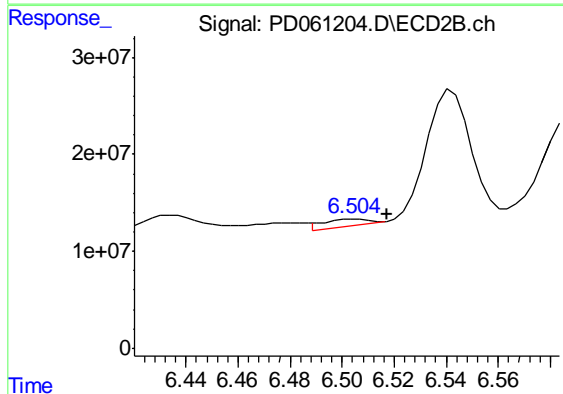
#12 4,4'-DDE
 R.T.: 6.356 min
 Delta R.T.: -0.009 min
 Response: 21401791
 Conc: 2.41 ng/ml



#13 Dieldrin

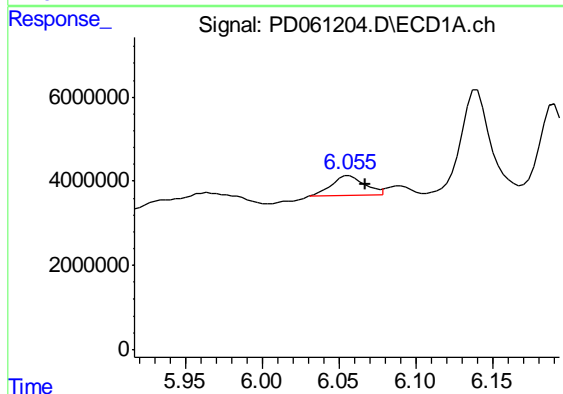
R.T.: 5.805 min
 Delta R.T.: -0.004 min
 Response: -144366477
 Conc: N.D.

Instrument :
 ECD_D
 ClientSampled :
 C0A39



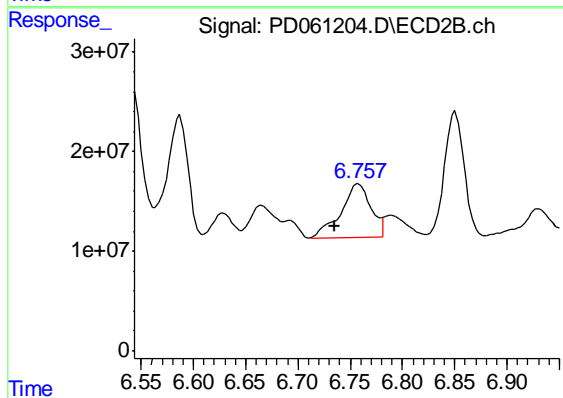
#13 Dieldrin

R.T.: 6.505 min
 Delta R.T.: -0.012 min
 Response: 8628164
 Conc: 0.93 ng/ml



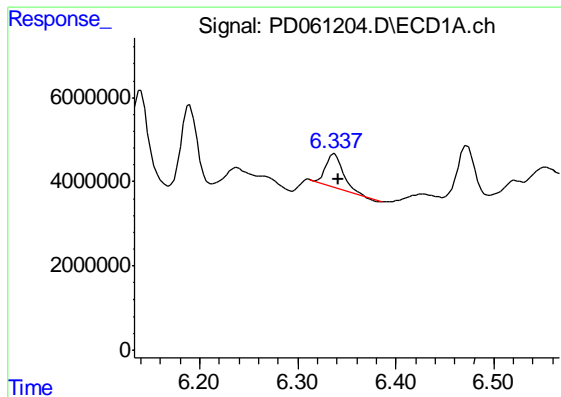
#14 Endrin

R.T.: 6.057 min
 Delta R.T.: -0.011 min
 Response: 7124263
 Conc: 5.73 ng/ml



#14 Endrin

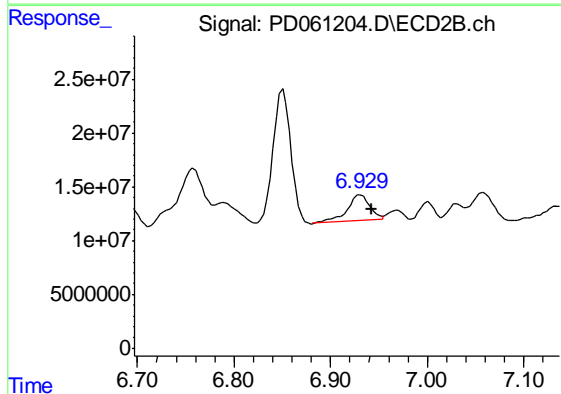
R.T.: 6.758 min
 Delta R.T.: 0.023 min
 Response: 104533506
 Conc: 14.15 ng/ml



#15 Endosulfan II

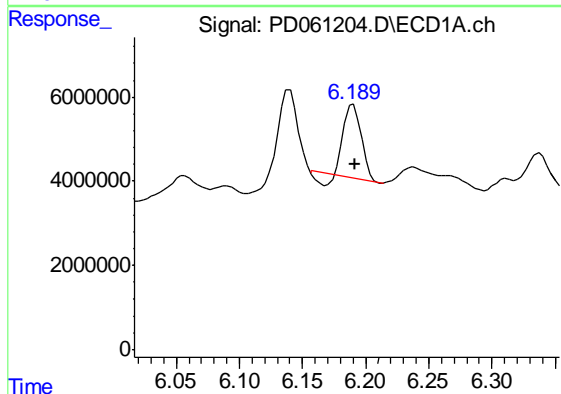
R.T.: 6.338 min
Delta R.T.: -0.004 min
Response: 10071605
Conc: 9.27 ng/ml

Instrument :
ECD_D
ClientSampled :
C0A39



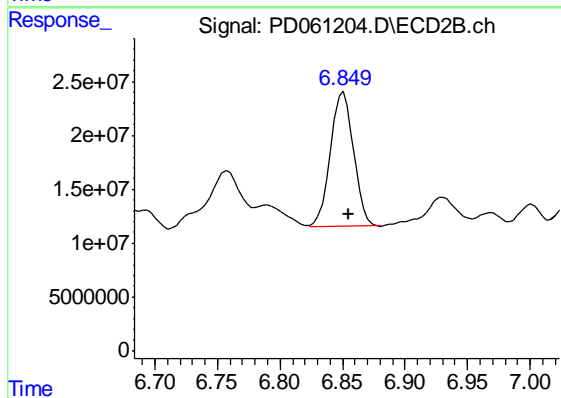
#15 Endosulfan II

R.T.: 6.931 min
Delta R.T.: -0.012 min
Response: 39280846
Conc: 5.46 ng/ml



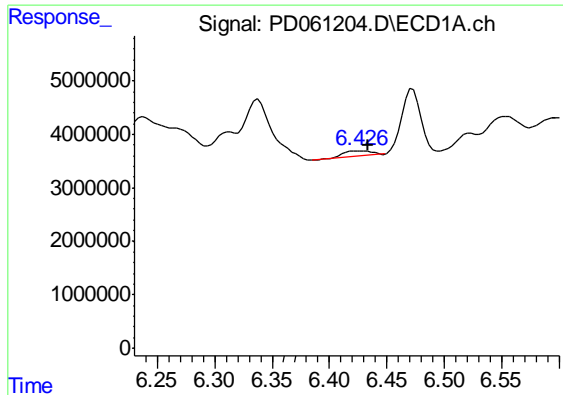
#16 4,4'-DDD

R.T.: 6.190 min
Delta R.T.: -0.001 min
Response: 14871094
Conc: 12.67 ng/ml



#16 4,4'-DDD

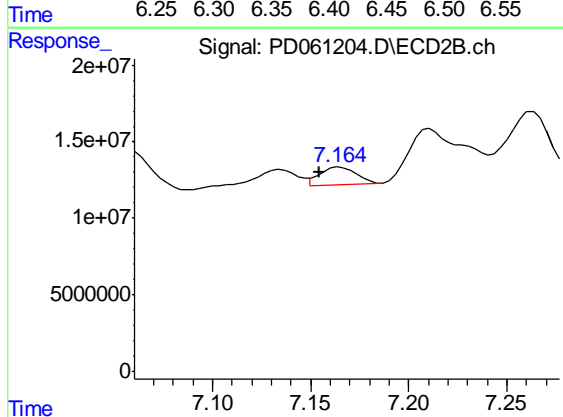
R.T.: 6.851 min
Delta R.T.: -0.004 min
Response: 161901717
Conc: 22.75 ng/ml



#17 4,4'-DDT

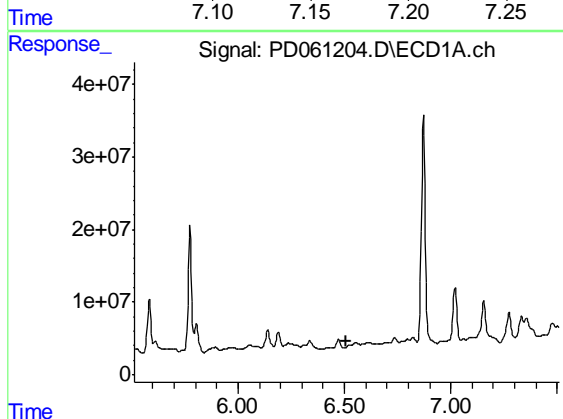
R.T.: 6.428 min
 Delta R.T.: -0.006 min
 Response: 1816480
 Conc: 1.48 ng/ml

Instrument :
 ECD_D
 ClientSampled :
 C0A39



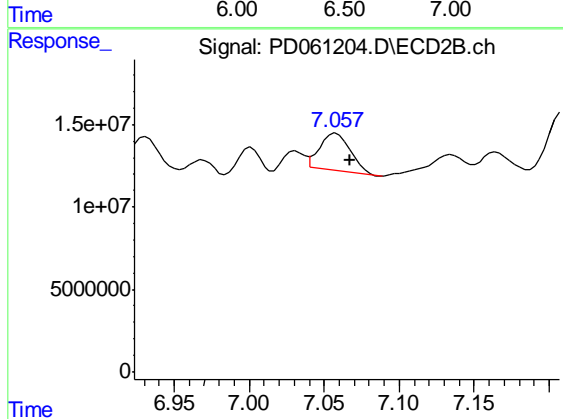
#17 4,4'-DDT

R.T.: 7.165 min
 Delta R.T.: 0.011 min
 Response: 14081536
 Conc: 1.94 ng/ml



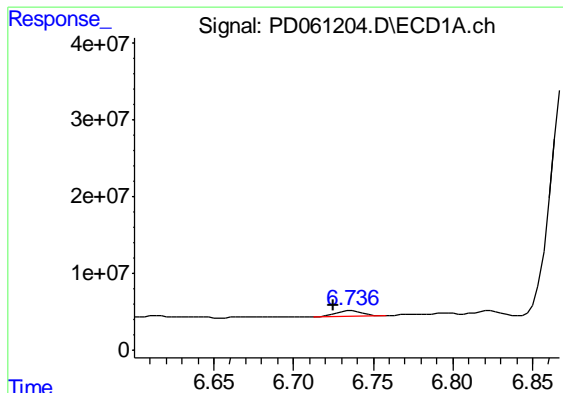
#18 Endrin aldehyde

R.T.: 6.523 min
 Delta R.T.: 0.011 min
 Response: -7161988
 Conc: N.D.



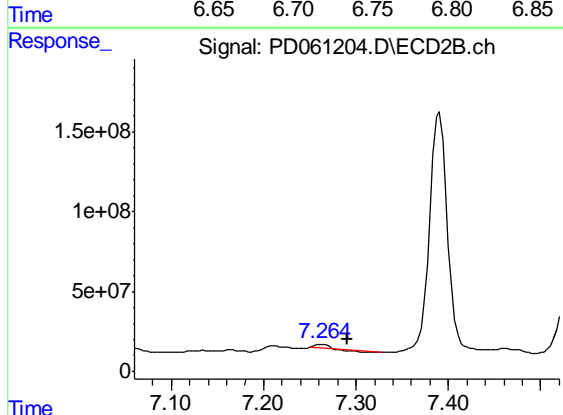
#18 Endrin aldehyde

R.T.: 7.058 min
 Delta R.T.: -0.009 min
 Response: 32223118
 Conc: 5.43 ng/ml

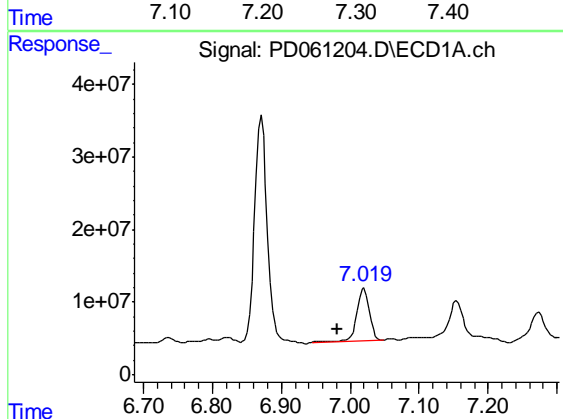


#19 Endosulfan Sulfate
 R.T.: 6.737 min
 Delta R.T.: 0.012 min
 Response: 8148990
 Conc: 7.81 ng/ml

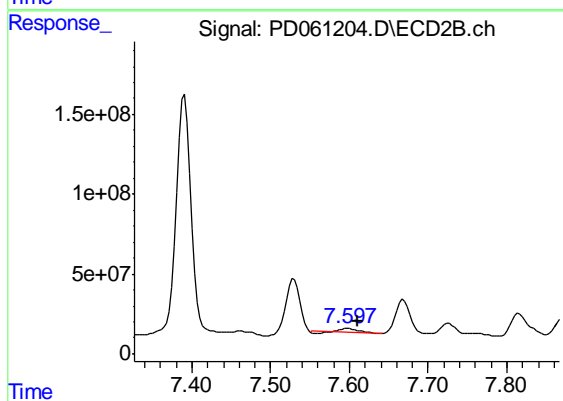
Instrument :
 ECD_D
 ClientSampled :
 C0A39



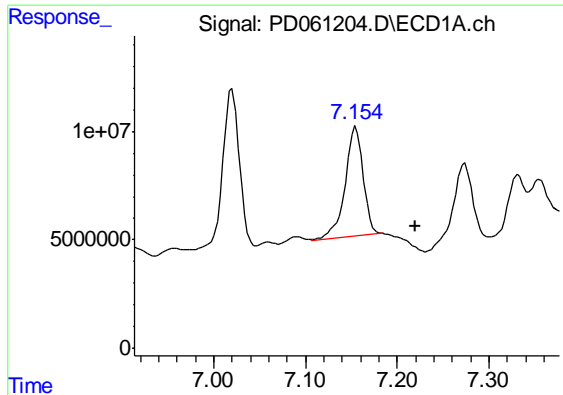
#19 Endosulfan Sulfate
 R.T.: 7.264 min
 Delta R.T.: -0.027 min
 Response: 19042462
 Conc: 2.70 ng/ml



#20 Methoxychlor
 R.T.: 7.020 min
 Delta R.T.: 0.039 min
 Response: 91749028
 Conc: 146.99 ng/ml

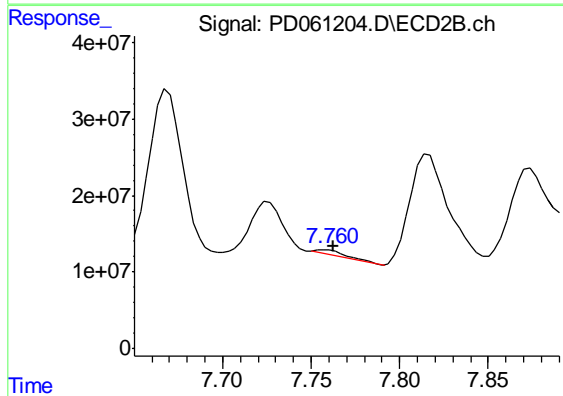


#20 Methoxychlor
 R.T.: 7.598 min
 Delta R.T.: -0.014 min
 Response: 32435509
 Conc: 9.83 ng/ml

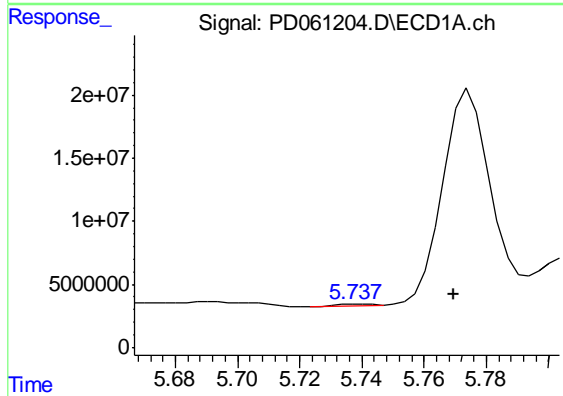


#21 Endrin ketone
 R.T.: 7.155 min
 Delta R.T.: -0.064 min
 Response: 69389656
 Conc: 53.70 ng/ml

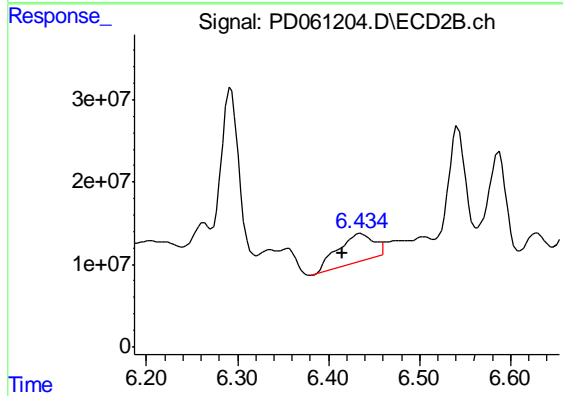
Instrument :
 ECD_D
 ClientSampled :
 C0A39



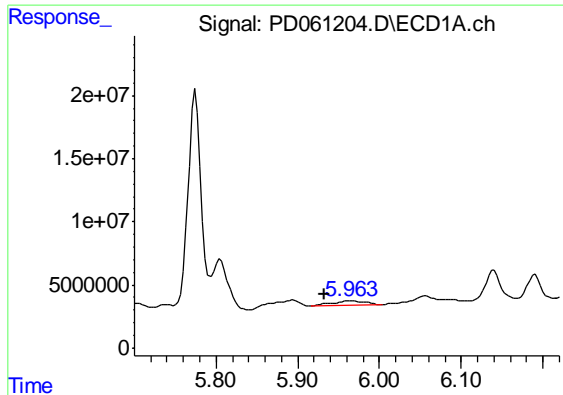
#21 Endrin ketone
 R.T.: 7.759 min
 Delta R.T.: -0.004 min
 Response: 8777279
 Conc: 1.21 ng/ml



#22 Toxaphene-1
 R.T.: 5.740 min
 Delta R.T.: -0.030 min
 Response: 686306
 Conc: 57.60 ng/ml

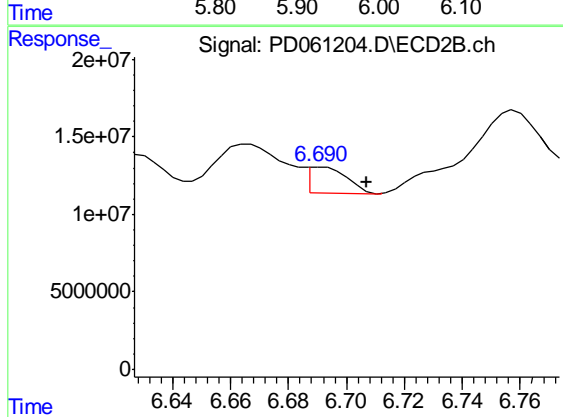


#22 Toxaphene-1
 R.T.: 6.435 min
 Delta R.T.: 0.020 min
 Response: 92817878
 Conc: 1702.93 ng/ml

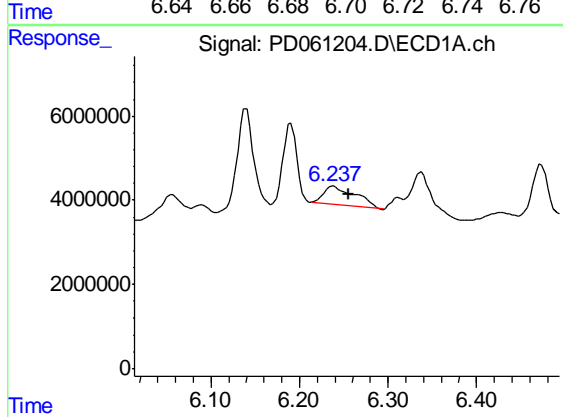


#23 Toxaphene-2
 R.T.: 5.964 min
 Delta R.T.: 0.032 min
 Response: 9268710
 Conc: 749.00 ng/ml

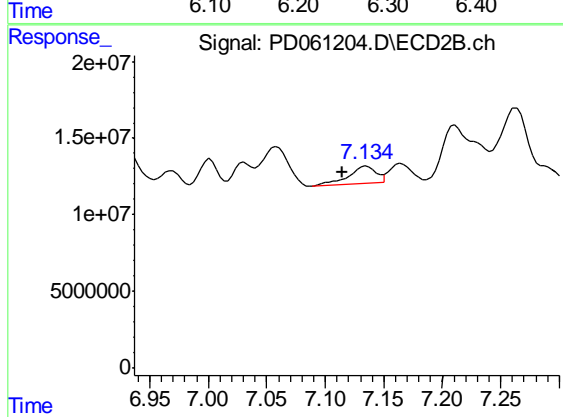
Instrument :
 ECD_D
 ClientSampled :
 C0A39



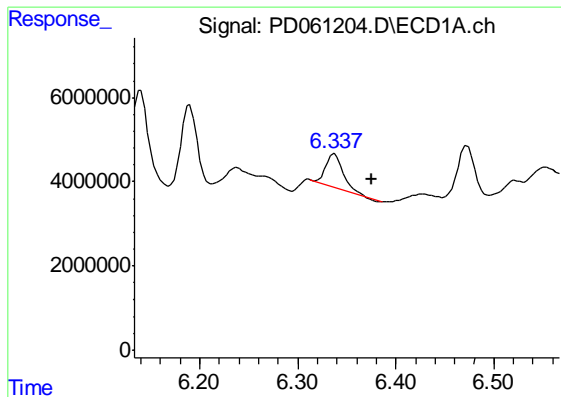
#23 Toxaphene-2
 R.T.: 6.692 min
 Delta R.T.: -0.015 min
 Response: 15325403
 Conc: 233.03 ng/ml



#24 Toxaphene-3
 R.T.: 6.238 min
 Delta R.T.: -0.018 min
 Response: 10857605
 Conc: 784.04 ng/ml



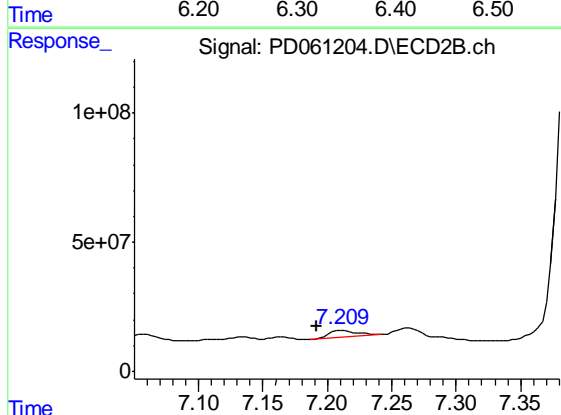
#24 Toxaphene-3
 R.T.: 7.135 min
 Delta R.T.: 0.020 min
 Response: 18098928
 Conc: 188.92 ng/ml



#25 Toxaphene-4

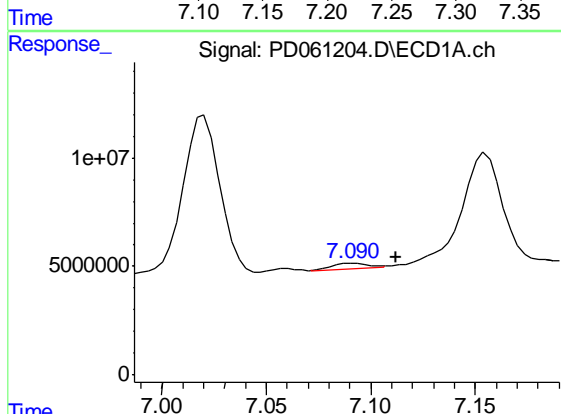
R.T.: 6.338 min
 Delta R.T.: -0.038 min
 Response: 10071605
 Conc: 313.04 ng/ml

Instrument :
 ECD_D
 ClientSampleId :
 C0A39



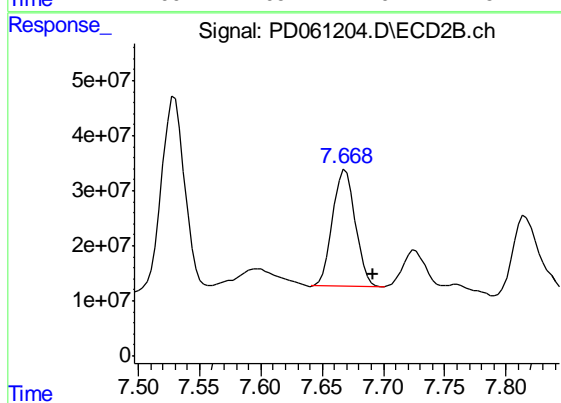
#25 Toxaphene-4

R.T.: 7.211 min
 Delta R.T.: 0.019 min
 Response: 40629701
 Conc: 155.17 ng/ml



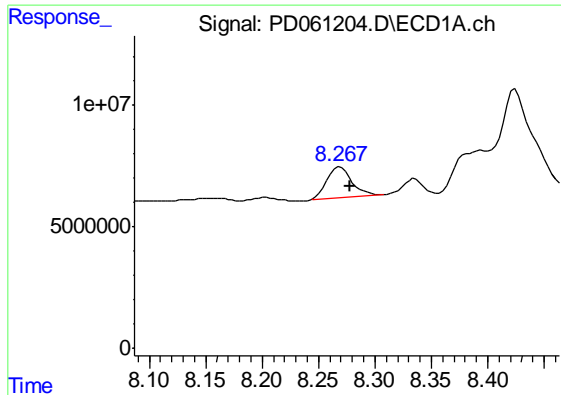
#26 Toxaphene-5

R.T.: 7.091 min
 Delta R.T.: -0.021 min
 Response: 2699029
 Conc: 77.68 ng/ml



#26 Toxaphene-5

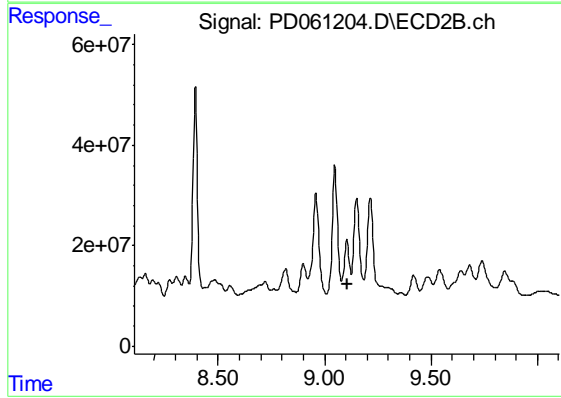
R.T.: 7.669 min
 Delta R.T.: -0.023 min
 Response: 274554696
 Conc: 2373.44 ng/ml



#27 Decachlorobiphenyl

R.T.: 8.269 min
Delta R.T.: -0.009 min
Response: 19598588
Conc: 15.55 ng/ml

Instrument :
ECD_D
ClientSampleId :
C0A39



#27 Decachlorobiphenyl

R.T.: 9.105 min
Delta R.T.: 0.000 min
Response: -19496384
Conc: N.D.