

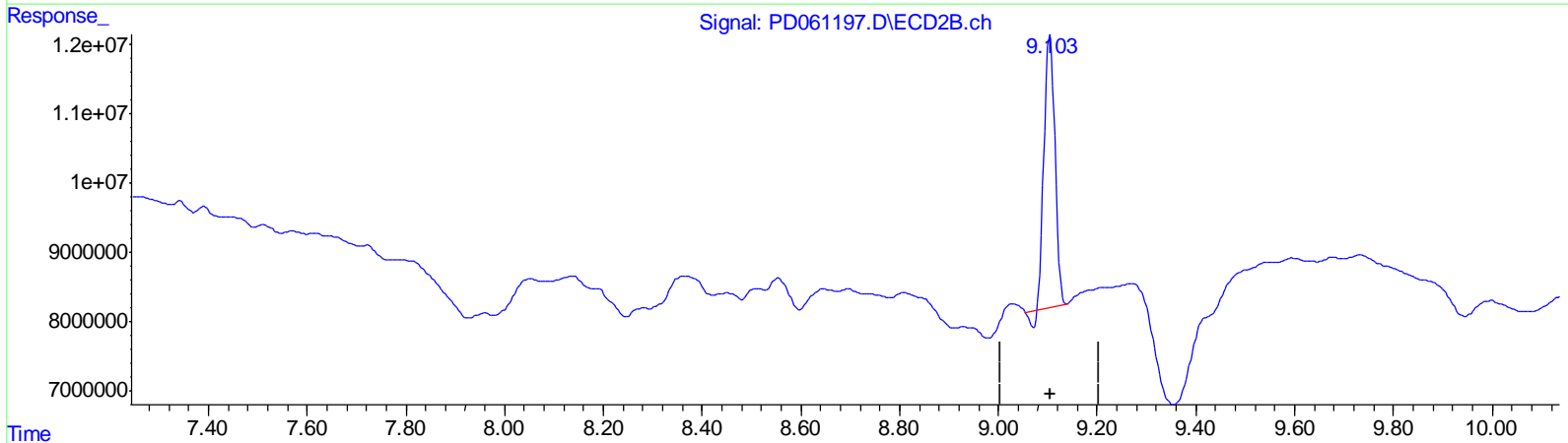
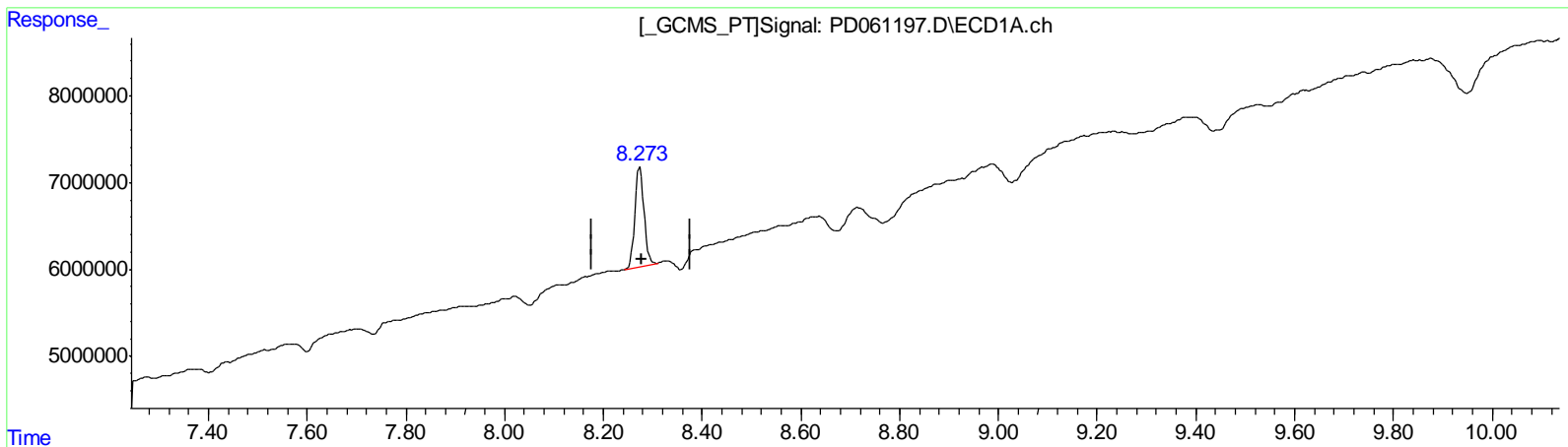
Data Path : Z:\pestpcbsrv\HPCHEM1\ECD_D\Data\PD021121\
 Data File : PD061197.D
 Signal(s) : Signal #1: ECD1A.ch Signal #2: ECD2B.ch
 Acq On : 11 Feb 2021 12:36
 Operator : DD\AJ
 Sample : M1310-09
 Misc :
 ALS Vial : 14 Sample Multiplier: 1

Instrument :
 ECD_D
ClientSampled :
 C0AA7

Manual Integrations
APPROVED
 Ankita
 2/18/2021 4:46:48 PM

Integration File signal 1: autoint1.e
 Integration File signal 2: autoint2.e
 Quant Time: Feb 12 04:15:27 2021
 Quant Method : Z:\pestpcbsrv\HPCHEM1\ECD_D\Method\PD012521CLP.M
 Quant Title : GC Extractables
 QLast Update : Tue Jan 26 00:33:50 2021
 Response via : Initial Calibration
 Integrator: ChemStation

Volume Inj. : 1 µl
 Signal #1 Phase : ZB-MR2 Signal #2 Phase: ZB-MR1
 Signal #1 Info : 30M x 0.32mm x0.2 Signal #2 Info : 30M x 0.32mm x 0.50µm



QEdit

(27) Decachlorobiphenyl (SA)

8.274min 11.654 ng/ml

response 14684431

(27) Decachlorobiphenyl #2 (SA)

9.104min 8.706 ng/ml

response 59119120

Data Path : Z:\pestpcbsrv\HPCHEM1\ECD_D\Data\PD021121\
 Data File : PD061197.D
 Signal(s) : Signal #1: ECD1A.ch Signal #2: ECD2B.ch
 Acq On : 11 Feb 2021 12:36
 Operator : DD\AJ
 Sample : M1310-09
 Misc :
 ALS Vial : 14 Sample Multiplier: 1

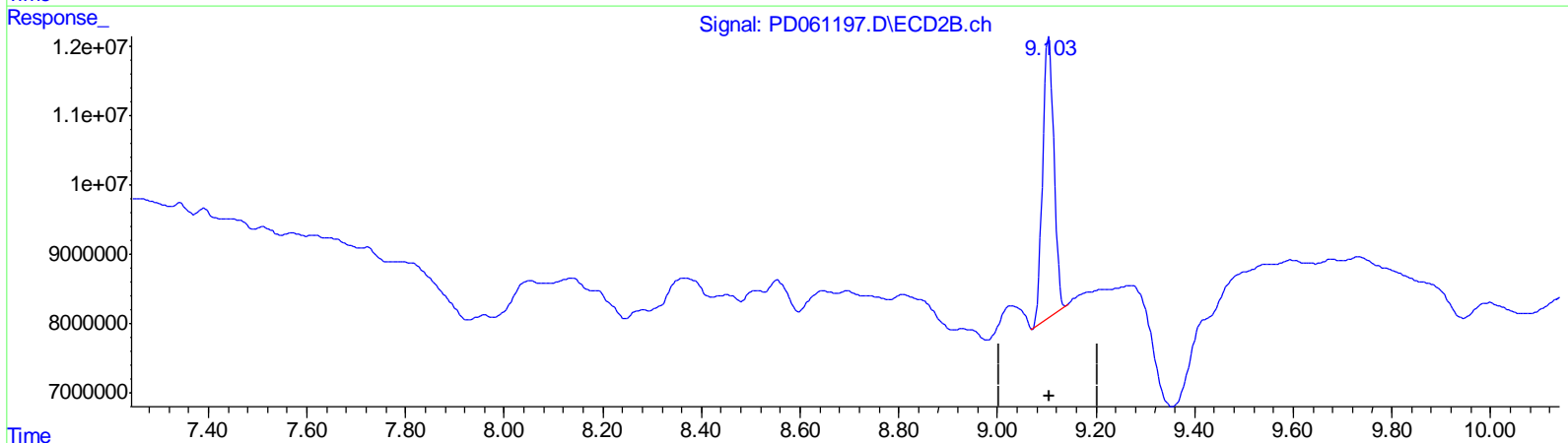
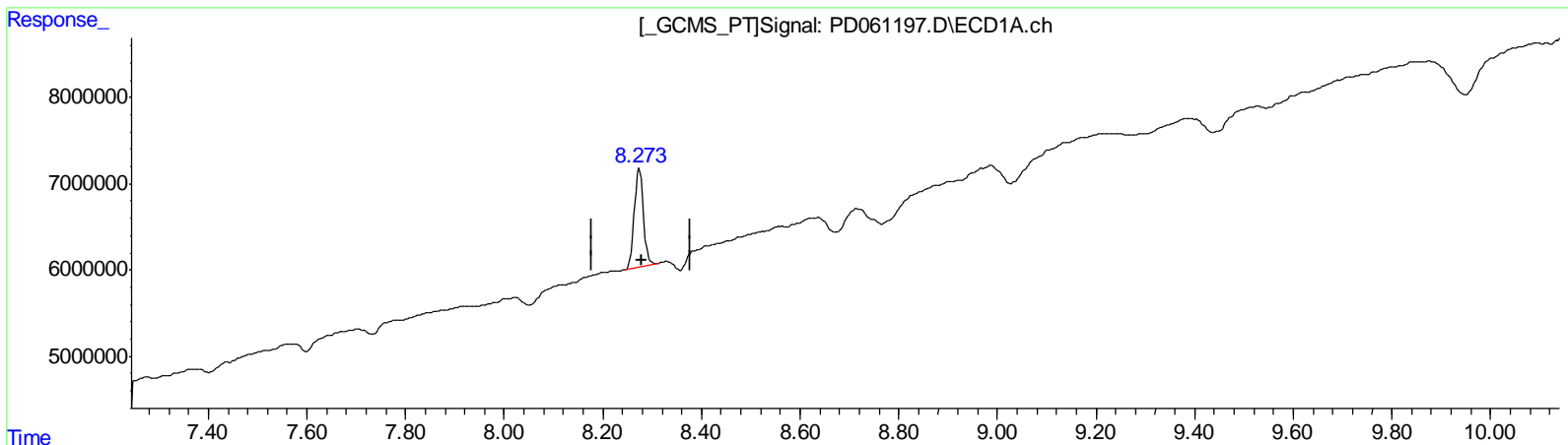
Instrument :
 ECD_D
 ClientSampleId :
 C0AA7

Manual Integrations
 APPROVED

Ankita
 2/18/2021 4:46:48 PM

Integration File signal 1: autoint1.e
 Integration File signal 2: autoint2.e
 Quant Time: Feb 12 04:15:27 2021
 Quant Method : Z:\pestpcbsrv\HPCHEM1\ECD_D\Method\PD012521CLP.M
 Quant Title : GC Extractables
 QLast Update : Tue Jan 26 00:33:50 2021
 Response via : Initial Calibration
 Integrator: ChemStation

Volume Inj. : 1 µl
 Signal #1 Phase : ZB-MR2 Signal #2 Phase: ZB-MR1
 Signal #1 Info : 30M x 0.32mm x0.2 Signal #2 Info : 30M x 0.32mm x 0.50µm



QEdit

(27) Decachlorobiphenyl (SA)

8.274min 11.654 ng/ml

response 14684431

(27) Decachlorobiphenyl #2 (SA)

9.103min 9.570 ng/ml m

response 64990225

(+) = Expected Retention Time

Quantitation Report (QT Reviewed)

Data Path : Z:\pestpcbsrv\HPCHEM1\ECD_D\Data\PD021121\
 Data File : PD061197.D
 Signal(s) : Signal #1: ECD1A.ch Signal #2: ECD2B.ch
 Acq On : 11 Feb 2021 12:36
 Operator : DD\AJ
 Sample : M1310-09
 Misc :
 ALS Vial : 14 Sample Multiplier: 1

Instrument :
 ECD_D
 ClientSampleId :
 C0AA7

Manual Integrations
 APPROVED

Ankita
 2/18/2021 4:46:48 PM

Integration File signal 1: autoint1.e
 Integration File signal 2: autoint2.e
 Quant Time: Feb 12 04:15:27 2021
 Quant Method : Z:\pestpcbsrv\HPCHEM1\ECD_D\Method\PD012521CLP.M
 Quant Title : GC Extractables
 QLast Update : Tue Jan 26 00:33:50 2021
 Response via : Initial Calibration
 Integrator: ChemStation

Volume Inj. : 1 µl
 Signal #1 Phase : ZB-MR2 Signal #2 Phase: ZB-MR1
 Signal #1 Info : 30M x 0.32mm x0.2 Signal #2 Info : 30M x 0.32mm x 0.50µm

Compound	RT#1	RT#2	Resp#1	Resp#2	ng/ml	ng/ml

System Monitoring Compounds						
1) SA Tetrachlo...	3.495	4.020	8938239	56237093	8.806	7.859
27) SA Decachlor...	8.274	9.103	14684431	64990225	11.654	9.570m

AJ
2/22/21

Target Compounds

(f)=RT Delta > 1/2 Window (#)=Amounts differ by > 25% (m)=manual int.