

Data Path : Z:\pestpcbsrv\HPCHEM1\ECD_D\Data\PD021221\
 Data File : PD061220.D
 Signal(s) : Signal #1: ECD1A.ch Signal #2: ECD2B.ch
 Acq On : 12 Feb 2021 09:29
 Operator : DD\AJ
 Sample : PEM06
 Misc :
 ALS Vial : 3 Sample Multiplier: 1

Instrument :
 ECD_D
ClientSampled :
 PEM06

Manual Integrations
APPROVED
 Ankita
 2/15/2021 9:39:20 AM

Integration File signal 1: autoint1.e
 Integration File signal 2: autoint2.e
 Quant Time: Feb 13 00:49:29 2021
 Quant Method : Z:\pestpcbsrv\HPCHEM1\ECD_D\Method\PD012521CLP.M
 Quant Title : GC Extractables
 QLast Update : Tue Jan 26 00:33:50 2021
 Response via : Initial Calibration
 Integrator: ChemStation

Volume Inj. : 1 µl
 Signal #1 Phase : ZB-MR2 Signal #2 Phase: ZB-MR1
 Signal #1 Info : 30M x 0.32mm x0.2 Signal #2 Info : 30M x 0.32mm x 0.50µm

Compound	RT#1	RT#2	Resp#1	Resp#2	ng/ml	ng/ml

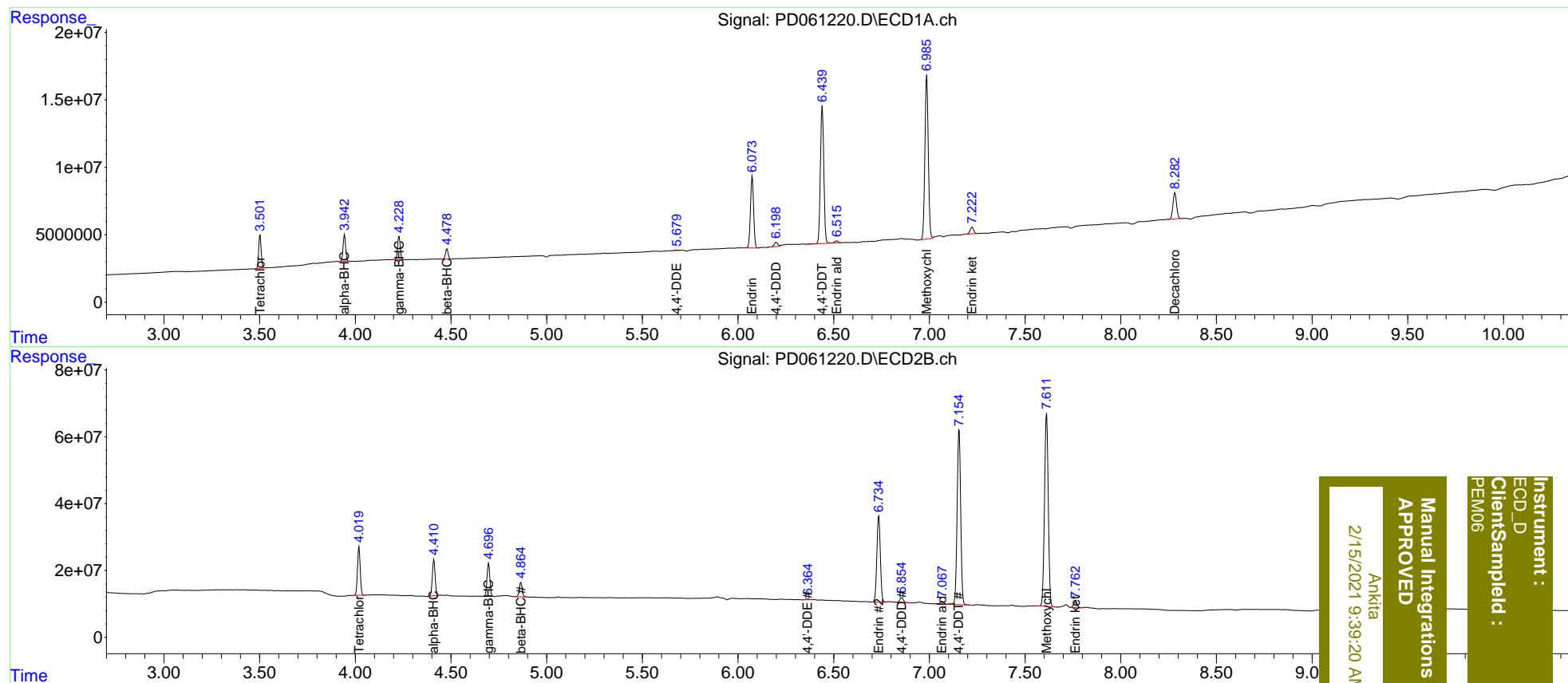
System Monitoring Compounds						
1) SA Tetrachlo...	3.503	4.020	22358059	143.7E6	22.028	20.077
27) SA Decachlor...	8.284	9.107	25367081	142.0E6	20.132	20.912
Target Compounds						
2) A alpha-BHC	3.944	4.411	18041723	108.5E6	12.102	9.805
3) MA gamma-BHC...	4.229	4.697	16860459	101.5E6	11.524	10.009
6) B beta-BHC	4.479	4.866	7152352	45655097	11.473	10.679
12) B 4,4'-DDE	5.679	6.364	436595	2749822	0.310m	0.310m
14) MA Endrin	6.075	6.736	60764111	327.0E6	48.883	44.267
16) A 4,4'-DDD	6.199	6.856	4145479	23057641	3.532	3.240
17) MA 4,4'-DDT	6.440	7.155	125.8E6	679.9E6	102.721	93.621
18) B Endrin al...	6.517	7.068	1612361	10849360	1.674	1.830
20) A Methoxychlor	6.986	7.613	148.3E6	785.6E6	237.563	238.010
21) B Endrin ke...	7.223	7.762	6422312	22940194	4.970	3.151m#

(f)=RT Delta > 1/2 Window (#)=Amounts differ by > 25% (m)=manual int.

Data Path : Z:\pestpcbsrv\HPCHEM1\ECD_D\Data\PD021221\
 Data File : PD061220.D
 Signal(s) : Signal #1: ECD1A.ch Signal #2: ECD2B.ch
 Acq On : 12 Feb 2021 09:29
 Operator : DD\AJ
 Sample : PEM06
 Misc :
 ALS Vial : 3 Sample Multiplier: 1

Integration File signal 1: autoint1.e
 Integration File signal 2: autoint2.e
 Quant Time: Feb 13 00:49:29 2021
 Quant Method : Z:\pestpcbsrv\HPCHEM1\ECD_D\Method\PD012521CLP.M
 Quant Title : GC Extractables
 QLast Update : Tue Jan 26 00:33:50 2021
 Response via : Initial Calibration
 Integrator: ChemStation

Volume Inj. : 1 µl
 Signal #1 Phase : ZB-MR2 Signal #2 Phase: ZB-MR1
 Signal #1 Info : 30M x 0.32mm x0.2 Signal #2 Info : 30M x 0.32mm x 0.50µm



Instrument : ECD_D
 Client Sample Id : PEM06
 Manual Integrations APPROVED
 Ankitia
 2/15/2021 9:39:20 AM