

Data Path : Z:\pestpcbsrv\HPCHEM1\ECD_D\Data\PD021324\
 Data File : PD081285.D
 Signal(s) : Signal #1: ECD1A.ch Signal #2: ECD2B.ch
 Acq On : 12 Feb 2024 19:39
 Operator : AR\AJ
 Sample : TOXAPH601
 Misc :
 ALS Vial : 9 Sample Multiplier: 1

Instrument :
 ECD_D
 ClientSampleId :
 INDA1005

Integration File signal 1: autoint1.e
 Integration File signal 2: autoint2.e
 Quant Time: Feb 13 01:36:31 2024
 Quant Method : Z:\pestpcbsrv\HPCHEM1\ECD_D\Method\PD021324CLP-TCLP.M
 Quant Title : GC Extractables
 QLast Update : Tue Feb 13 01:34:43 2024
 Response via : Initial Calibration
 Integrator: ChemStation

Volume Inj. : 1 µl
 Signal #1 Phase : ZB-MR2 Signal #2 Phase: ZB-MR1
 Signal #1 Info : 30M x 0.32mm x0.2 Signal #2 Info : 30M x 0.32mm x 0.50µm

Compound	RT#1	RT#2	Resp#1	Resp#2	ng/ml	ng/ml

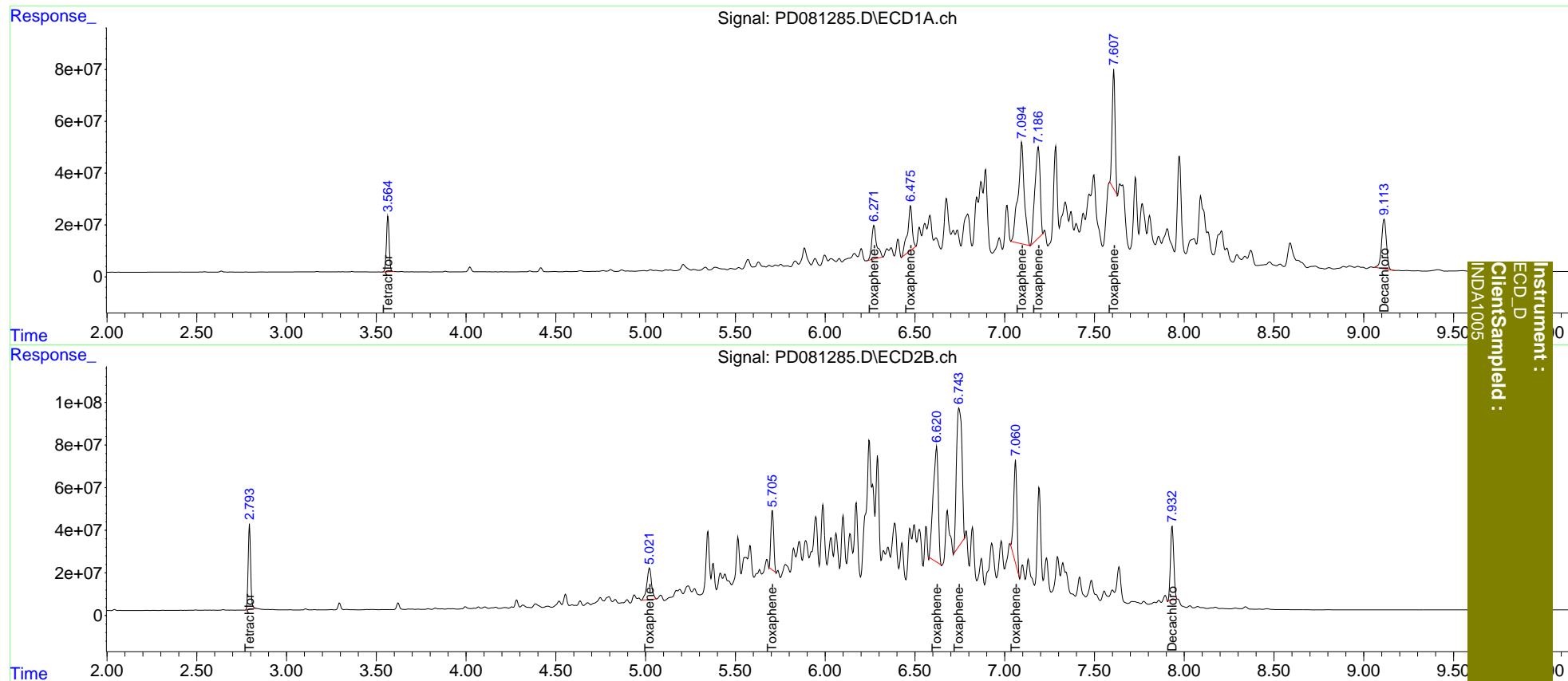
System Monitoring Compounds						
1) SA Tetrachlo...	3.565	2.794	226.5E6	380.1E6	162.534	155.871
27) SA Decachlor...	9.114	7.933	353.4E6	439.6E6	290.127	297.867
Target Compounds						
22) Toxaphene-1	6.272	5.022	248.2E6	266.8E6	15888.703	15624.694
23) Toxaphene-2	6.476	5.706	315.0E6	303.8E6	17303.677	16456.999
24) Toxaphene-3	7.095	6.621	940.0E6	1058.3E6	16337.931	17441.814
25) Toxaphene-4	7.187	6.746	709.5E6	1367.9E6	16364.809	16366.589
26) Toxaphene-5	7.608	7.061	515.1E6	584.8E6	17137.030	16956.487

(f)=RT Delta > 1/2 Window (#)=Amounts differ by > 25% (m)=manual int.

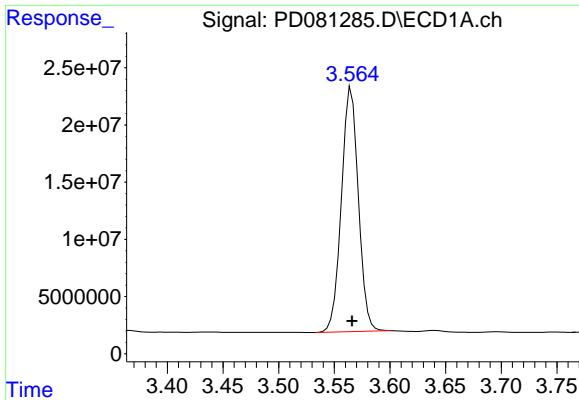
Data Path : Z:\pestpcbsrv\HPCHEM1\ECD_D\Data\PD021324\
 Data File : PD081285.D
 Signal(s) : Signal #1: ECD1A.ch Signal #2: ECD2B.ch
 Acq On : 12 Feb 2024 19:39
 Operator : AR\AJ
 Sample : TOXAPH601
 Misc :
 ALS Vial : 9 Sample Multiplier: 1

Integration File signal 1: autoint1.e
 Integration File signal 2: autoint2.e
 Quant Time: Feb 13 01:36:31 2024
 Quant Method : Z:\pestpcbsrv\HPCHEM1\ECD_D\Method\PD021324CLP-TCLP.M
 Quant Title : GC Extractables
 QLast Update : Tue Feb 13 01:34:43 2024
 Response via : Initial Calibration
 Integrator: ChemStation

Volume Inj. : 1 µl
 Signal #1 Phase : ZB-MR2 Signal #2 Phase: ZB-MR1
 Signal #1 Info : 30M x 0.32mm x0.2 Signal #2 Info : 30M x 0.32mm x 0.50µm

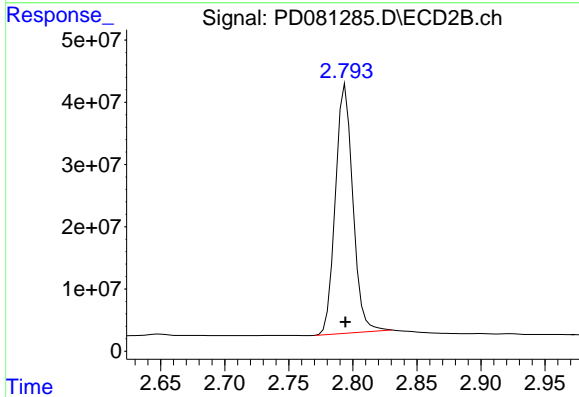


Instrument :
 ECD_D
 ClientSampled :
 INDAT1005

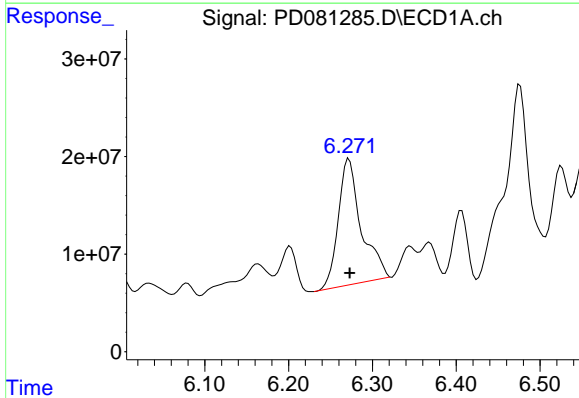


#1 Tetrachloro-m-xylene
 R.T.: 3.565 min
 Delta R.T.: 0.000 min
 Response: 226453826
 Conc: 162.53 ng/ml

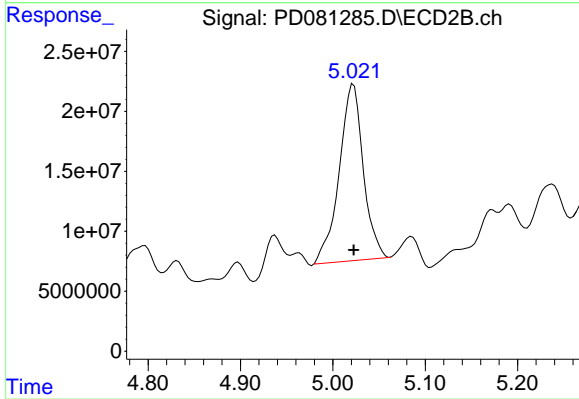
Instrument :
 ECD_D
 ClientSampleId :
 INDA1005



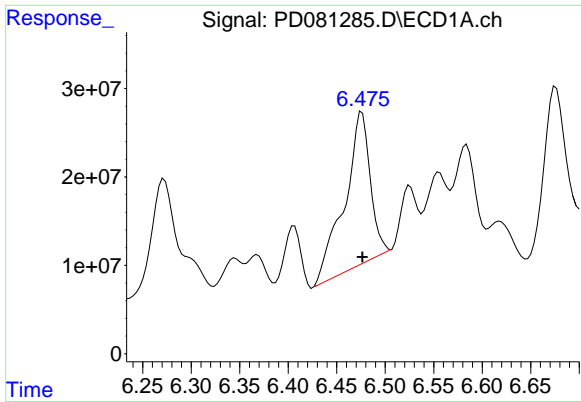
#1 Tetrachloro-m-xylene
 R.T.: 2.794 min
 Delta R.T.: 0.000 min
 Response: 380133730
 Conc: 155.87 ng/ml



#22 Toxaphene-1
 R.T.: 6.272 min
 Delta R.T.: 0.000 min
 Response: 248229215
 Conc: 15888.70 ng/ml



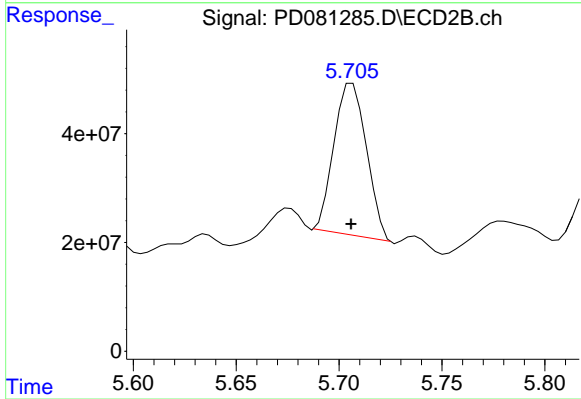
#22 Toxaphene-1
 R.T.: 5.022 min
 Delta R.T.: 0.000 min
 Response: 266799174
 Conc: 15624.69 ng/ml



#23 Toxaphene-2

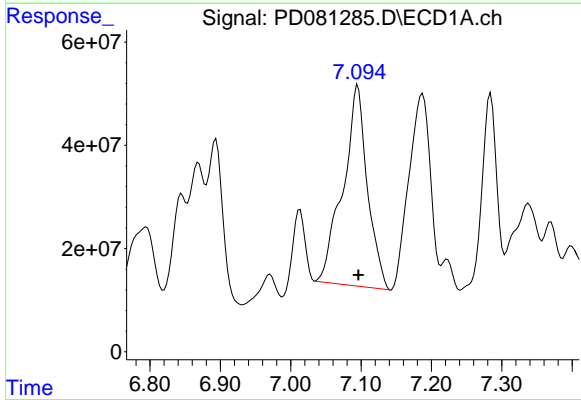
R.T.: 6.476 min
 Delta R.T.: 0.000 min
 Response: 314982573
 Conc: 17303.68 ng/ml

Instrument :
 ECD_D
 ClientSampleId :
 INDA1005



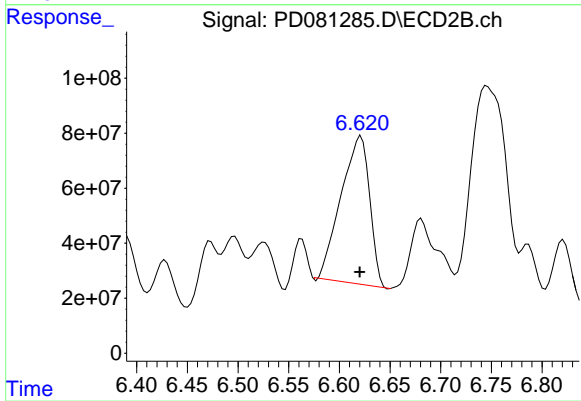
#23 Toxaphene-2

R.T.: 5.706 min
 Delta R.T.: 0.000 min
 Response: 303832397
 Conc: 16457.00 ng/ml



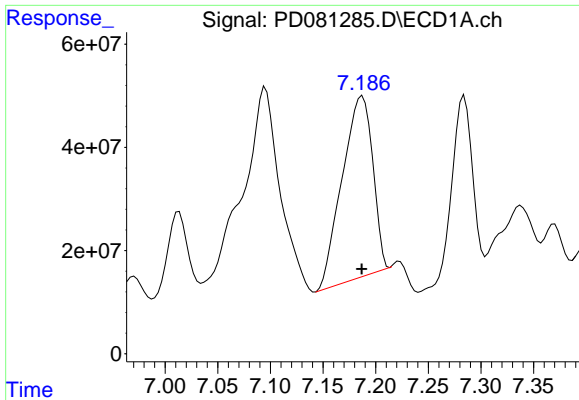
#24 Toxaphene-3

R.T.: 7.095 min
 Delta R.T.: 0.000 min
 Response: 940041424
 Conc: 16337.93 ng/ml



#24 Toxaphene-3

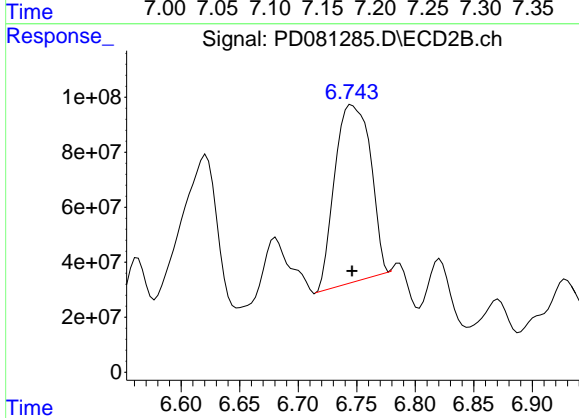
R.T.: 6.621 min
 Delta R.T.: 0.001 min
 Response: 1058254210
 Conc: 17441.81 ng/ml



#25 Toxaphene-4

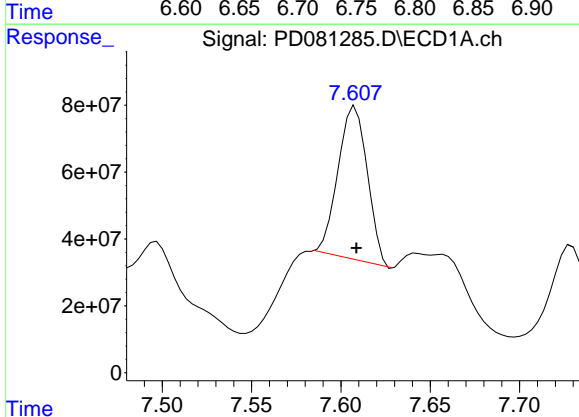
R.T.: 7.187 min
Delta R.T.: 0.000 min
Response: 709484927
Conc: 16364.81 ng/ml

Instrument :
ECD_D
ClientSampleId :
INDA1005



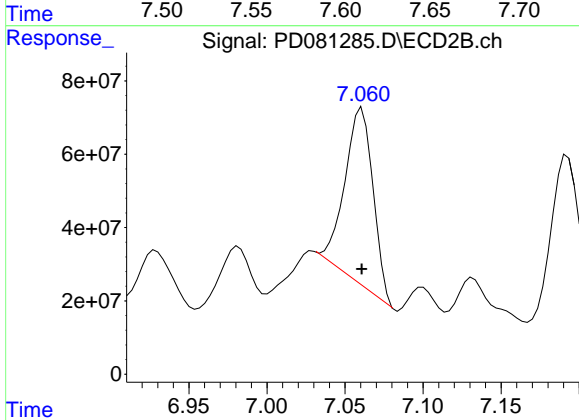
#25 Toxaphene-4

R.T.: 6.746 min
Delta R.T.: 0.000 min
Response: 1367919782
Conc: 16366.59 ng/ml



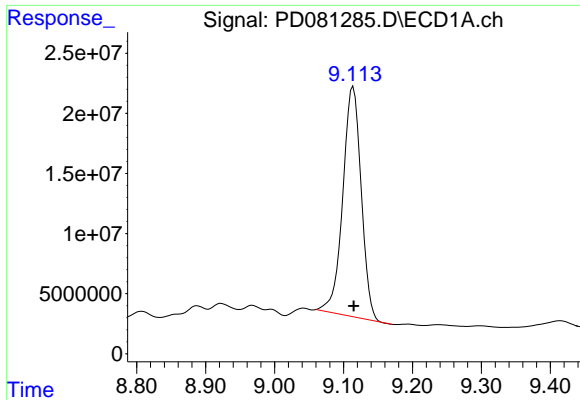
#26 Toxaphene-5

R.T.: 7.608 min
Delta R.T.: 0.000 min
Response: 515068190
Conc: 17137.03 ng/ml



#26 Toxaphene-5

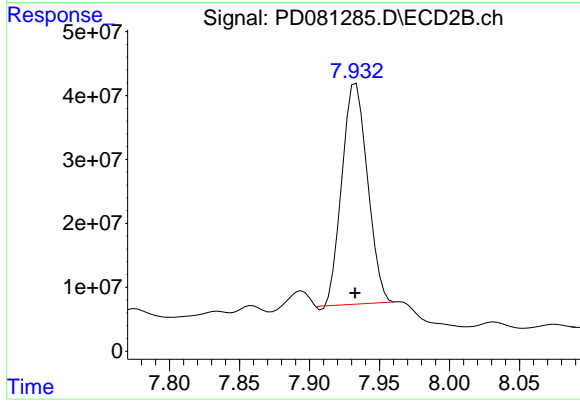
R.T.: 7.061 min
Delta R.T.: 0.000 min
Response: 584750986
Conc: 16956.49 ng/ml



#27 Decachlorobiphenyl

R.T.: 9.114 min
Delta R.T.: 0.000 min
Response: 353362483
Conc: 290.13 ng/ml

Instrument :
ECD_D
ClientSampleId :
INDA1005



#27 Decachlorobiphenyl

R.T.: 7.933 min
Delta R.T.: 0.000 min
Response: 439579609
Conc: 297.87 ng/ml