

Data Path : Z:\pestpcbsrv\HPCHEM1\ECD_D\Data\PD021420\
 Data File : PD057298.D
 Signal(s) : Signal #1: ECD1A.ch Signal #2: ECD2B.ch
 Acq On : 14 Feb 2020 18:15
 Operator : AJ\MA
 Sample : L1423-07
 Misc :
 ALS Vial : 27 Sample Multiplier: 1

Instrument :
 ECD_D
ClientSampled :
 C5AZ1

Manual Integrations
APPROVED
 mohammad
 2/17/2020 3:38:26 PM

Integration File signal 1: autoint1.e
 Integration File signal 2: autoint2.e
 Quant Time: Feb 15 01:25:30 2020
 Quant Method : Z:\pestpcbsrv\HPCHEM1\ECD_D\Method\PD021020CLP.M
 Quant Title : GC Extractables
 QLast Update : Tue Feb 11 04:58:40 2020
 Response via : Initial Calibration
 Integrator: ChemStation

Volume Inj. : 1 µl
 Signal #1 Phase : ZB-MR2 Signal #2 Phase: ZB-MR1
 Signal #1 Info : 30M x 0.32mm x0.2 Signal #2 Info : 30M x 0.32mm x 0.50µm

Compound	RT#1	RT#2	Resp#1	Resp#2	ng/ml	ng/ml

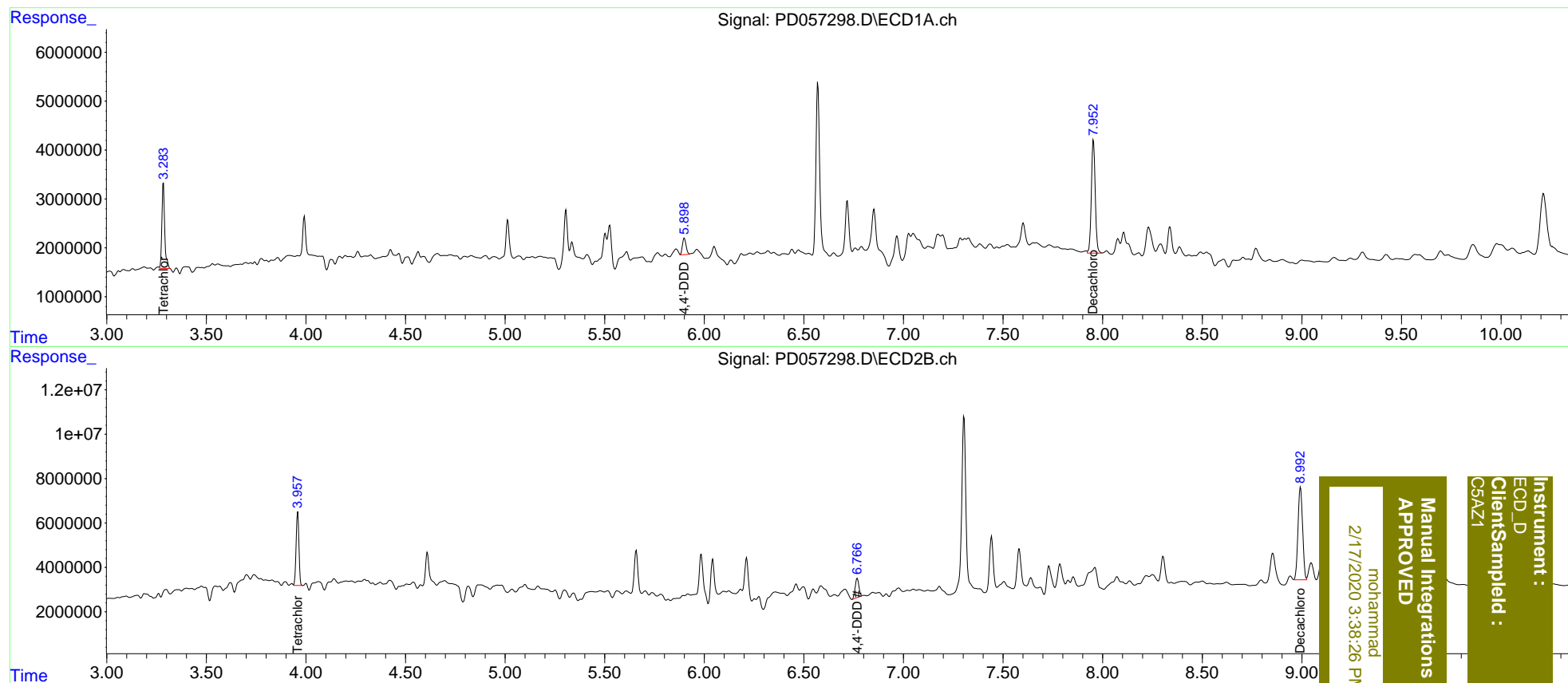
System Monitoring Compounds						
1) SA Tetrachlo...	3.283	3.957	17166197	32243711	20.665m	17.303m
2) SA Decachlor...	7.952	8.992	31350994	66763783	30.220m	29.534m
Target Compounds						
16) A 4,4'-DDD	5.898	6.768	4247303	11192446	6.131m	5.428

(f)=RT Delta > 1/2 Window (#)=Amounts differ by > 25% (m)=manual int.

Data Path : Z:\pestpcbsrv\HPCHEM1\ECD_D\Data\PD021420\
 Data File : PD057298.D
 Signal(s) : Signal #1: ECD1A.ch Signal #2: ECD2B.ch
 Acq On : 14 Feb 2020 18:15
 Operator : AJ\MA
 Sample : L1423-07
 Misc :
 ALS Vial : 27 Sample Multiplier: 1

Integration File signal 1: autoint1.e
 Integration File signal 2: autoint2.e
 Quant Time: Feb 15 01:25:30 2020
 Quant Method : Z:\pestpcbsrv\HPCHEM1\ECD_D\Method\PD021020CLP.M
 Quant Title : GC Extractables
 QLast Update : Tue Feb 11 04:58:40 2020
 Response via : Initial Calibration
 Integrator: ChemStation

Volume Inj. : 1 µl
 Signal #1 Phase : ZB-MR2 Signal #2 Phase: ZB-MR1
 Signal #1 Info : 30M x 0.32mm x0.2 Signal #2 Info : 30M x 0.32mm x 0.50µm



Instrument : ECD_D
 Client/SampleId : C5AZ1

Manual Integrations
 APPROVED
 mohammad
 2/17/2020 3:38:26 PM