

Data Path : Z:\pestpcbsrv\HPCHEM1\ECD_D\Data\PD021420\
 Data File : PD057302.D
 Signal(s) : Signal #1: ECD1A.ch Signal #2: ECD2B.ch
 Acq On : 14 Feb 2020 19:11
 Operator : AJ\MA
 Sample : L1423-21
 Misc :
 ALS Vial : 31 Sample Multiplier: 1

Instrument :
 ECD_D
ClientSampleID :
 C5B01

Manual Integrations
APPROVED

Sohil
 2/19/2020 3:51:52 PM

Integration File signal 1: autoint1.e
 Integration File signal 2: autoint2.e
 Quant Time: Feb 15 01:26:24 2020
 Quant Method : Z:\pestpcbsrv\HPCHEM1\ECD_D\Method\PD021020CLP.M
 Quant Title : GC Extractables
 QLast Update : Tue Feb 11 04:58:40 2020
 Response via : Initial Calibration
 Integrator: ChemStation

Volume Inj. : 1 µl
 Signal #1 Phase : ZB-MR2 Signal #2 Phase: ZB-MR1
 Signal #1 Info : 30M x 0.32mm x0.2 Signal #2 Info : 30M x 0.32mm x 0.50µm

Compound	RT#1	RT#2	Resp#1	Resp#2	ng/ml	ng/ml

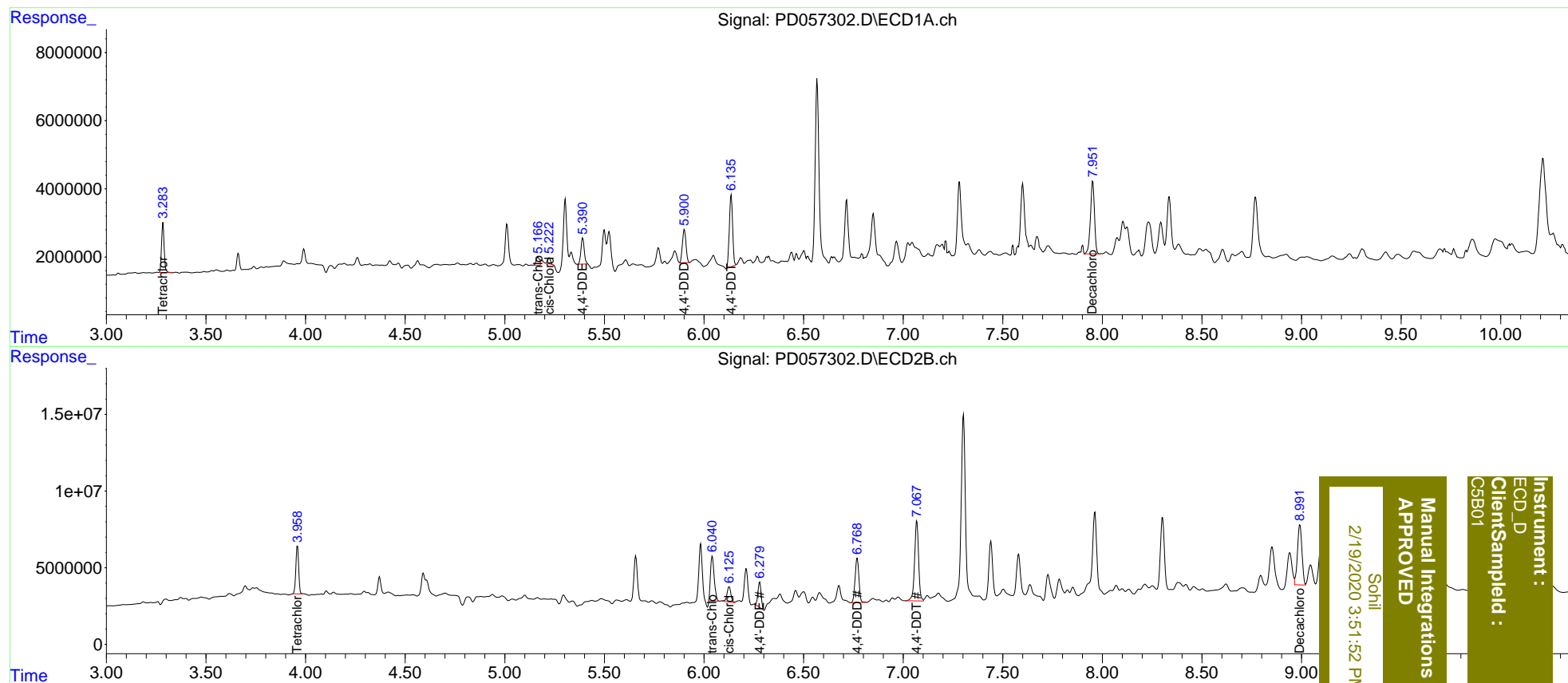
System Monitoring Compounds						
1) SA Tetrachlo...	3.284	3.958	13160907	30698450	15.843	16.474m
27) SA Decachlor...	7.952	8.991	30022965	61442365	28.940	27.180m
Target Compounds						
10) B trans-Chl...	5.166	6.040	2777102	37784137	2.569m	13.820m#
11) B cis-Chlor...	5.222	6.127	1762482	13440430	1.649m	5.246 #
12) B 4,4'-DDE	5.390	6.280	8751381	18574352	7.915m	7.258
16) A 4,4'-DDD	5.902	6.769	12010119	38556719	17.337	18.700
17) MA 4,4'-DDT	6.135	7.069	24032098	72657243	36.931m	38.268

(f)=RT Delta > 1/2 Window (#)=Amounts differ by > 25% (m)=manual int.

Data Path : Z:\pestpcbsrv\HPCHEM1\ECD_D\Data\PD021420\
 Data File : PD057302.D
 Signal(s) : Signal #1: ECD1A.ch Signal #2: ECD2B.ch
 Acq On : 14 Feb 2020 19:11
 Operator : AJ\MA
 Sample : L1423-21
 Misc :
 ALS Vial : 31 Sample Multiplier: 1

Integration File signal 1: autoint1.e
 Integration File signal 2: autoint2.e
 Quant Time: Feb 15 01:26:24 2020
 Quant Method : Z:\pestpcbsrv\HPCHEM1\ECD_D\Method\PD021020CLP.M
 Quant Title : GC Extractables
 QLast Update : Tue Feb 11 04:58:40 2020
 Response via : Initial Calibration
 Integrator: ChemStation

Volume Inj. : 1 µl
 Signal #1 Phase : ZB-MR2 Signal #2 Phase: ZB-MR1
 Signal #1 Info : 30M x 0.32mm x0.2 Signal #2 Info : 30M x 0.32mm x 0.50µm



Instrument : ECD_D
 ClientSampleId : C5B01
 Manual Integrations APPROVED
 Sohil
 2/19/2020 3:51:52 PM