

Data Path : Z:\pestpcbsrv\HPCHEM1\ECD_D\Data\PD021522\
 Data File : PD068023.D
 Signal(s) : Signal #1: ECD1A.ch Signal #2: ECD2B.ch
 Acq On : 15 Feb 2022 17:16
 Operator : AR\AJ
 Sample : PEM182
 Misc :
 ALS Vial : 3 Sample Multiplier: 1

Instrument :
 ECD_D
ClientSampleId :
 PEM182

Manual Integrations
APPROVED

Reviewed By :Abdul Mirza 02/16/2022
 Supervised By :Ankita Jodhani 02/18/2022

Integration File signal 1: autoint1.e
 Integration File signal 2: autoint2.e
 Quant Time: Feb 16 01:04:35 2022
 Quant Method : Z:\pestpcbsrv\HPCHEM1\ECD_D\Method\PD021522CLP.M
 Quant Title : GC Extractables
 QLast Update : Wed Feb 16 00:56:37 2022
 Response via : Initial Calibration
 Integrator: ChemStation

Volume Inj. : 1 µl
 Signal #1 Phase : ZB-MR2 Signal #2 Phase: ZB-MR1
 Signal #1 Info : 30M x 0.32mm x0.2 Signal #2 Info : 30M x 0.32mm x 0.50µm

Compound	RT#1	RT#2	Resp#1	Resp#2	ng/ml	ng/ml

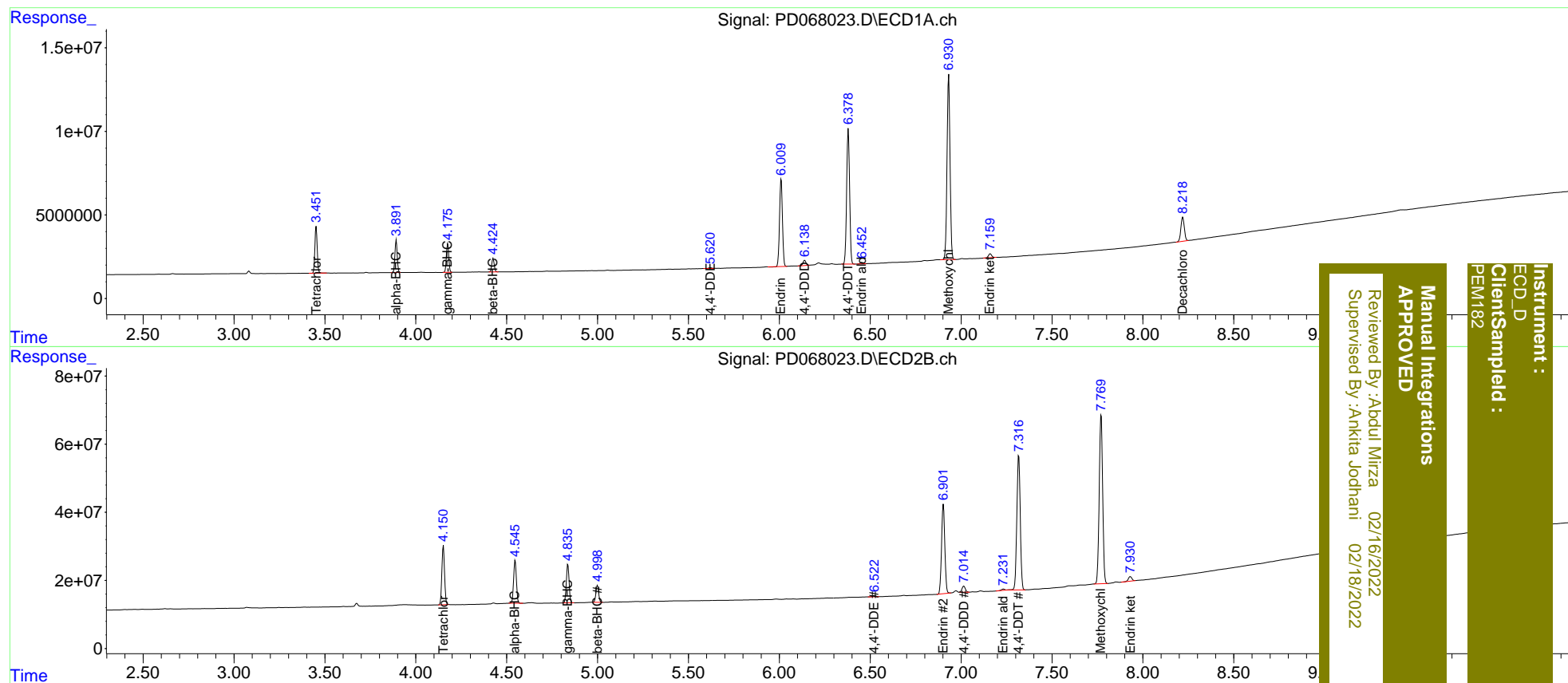
System Monitoring Compounds						
1) SA Tetrachlo...	3.452	4.152	24892855	177.6E6	18.959	19.220
27) SA Decachlor...	8.219	9.330	18832494	96487753	18.956	19.900
Target Compounds						
2) A alpha-BHC	3.892	4.547	17101516	134.3E6	9.573	10.094
3) MA gamma-BHC...	4.176	4.837	15682347	119.7E6	9.326	9.840
6) B beta-BHC	4.424	4.998	7737852	53028363	10.266m	10.194m
12) B 4,4'-DDE	5.621	6.524	496733	4758129	0.367	0.558 #
14) MA Endrin	6.010	6.902	57891228	325.6E6	48.075	49.336
16) A 4,4'-DDD	6.139	7.015	3447559	22690245	2.899	3.293
17) MA 4,4'-DDT	6.379	7.317	92555692	517.3E6	100.312	98.839
18) B Endrin al...	6.454	7.233	958720	4056312	1.098	0.809 #
20) A Methoxychlor	6.932	7.771	126.6E6	651.5E6	233.522	242.937
21) B Endrin ke...	7.160	7.931	2918601	18057113	2.599	2.979

(f)=RT Delta > 1/2 Window (#)=Amounts differ by > 25% (m)=manual int.

Data Path : Z:\pestpcbsrv\HPCHEM1\ECD_D\Data\PD021522\
 Data File : PD068023.D
 Signal(s) : Signal #1: ECD1A.ch Signal #2: ECD2B.ch
 Acq On : 15 Feb 2022 17:16
 Operator : AR\AJ
 Sample : PEM182
 Misc :
 ALS Vial : 3 Sample Multiplier: 1

Integration File signal 1: autoint1.e
 Integration File signal 2: autoint2.e
 Quant Time: Feb 16 01:04:35 2022
 Quant Method : Z:\pestpcbsrv\HPCHEM1\ECD_D\Method\PD021522CLP.M
 Quant Title : GC Extractables
 QLast Update : Wed Feb 16 00:56:37 2022
 Response via : Initial Calibration
 Integrator: ChemStation

Volume Inj. : 1 µl
 Signal #1 Phase : ZB-MR2 Signal #2 Phase: ZB-MR1
 Signal #1 Info : 30M x 0.32mm x0.2 Signal #2 Info : 30M x 0.32mm x 0.50µm



Instrument : ECD_D
 Client/Sample ID : PEM182

Manual Integrations
 APPROVED

Reviewed By : Abdul Mirza 02/16/2022
 Supervised By : Ankita Jodhani 02/18/2022