

Data Path : Z:\pestpcbsrv\HPCHEM1\ECD_D\Data\PD021522\
 Data File : PD068032.D
 Signal(s) : Signal #1: ECD1A.ch Signal #2: ECD2B.ch
 Acq On : 15 Feb 2022 19:22
 Operator : AR\AJ
 Sample : INDB201
 Misc :
 ALS Vial : 12 Sample Multiplier: 1

Instrument :
 ECD_D
 ClientSampleId :
 INDB2067

Manual Integrations
APPROVED

Reviewed By :Abdul Mirza 02/16/2022
 Supervised By :Ankita Jodhani 02/18/2022

Integration File signal 1: autoint1.e
 Integration File signal 2: autoint2.e
 Quant Time: Feb 16 00:45:12 2022
 Quant Method : Z:\pestpcbsrv\HPCHEM1\ECD_D\Method\PD021522CLP.M
 Quant Title : GC Extractables
 QLast Update : Wed Feb 16 00:34:36 2022
 Response via : Initial Calibration
 Integrator: ChemStation

Volume Inj. : 1 µl
 Signal #1 Phase : ZB-MR1 Signal #2 Phase: ZB-MR1
 Signal #1 Info : 30M x 0.32mm x0.2 Signal #2 Info : 30M x 0.32mm x 0.50µm

Compound	RT#1	RT#2	Resp#1	Resp#2	ng/ml	ng/ml

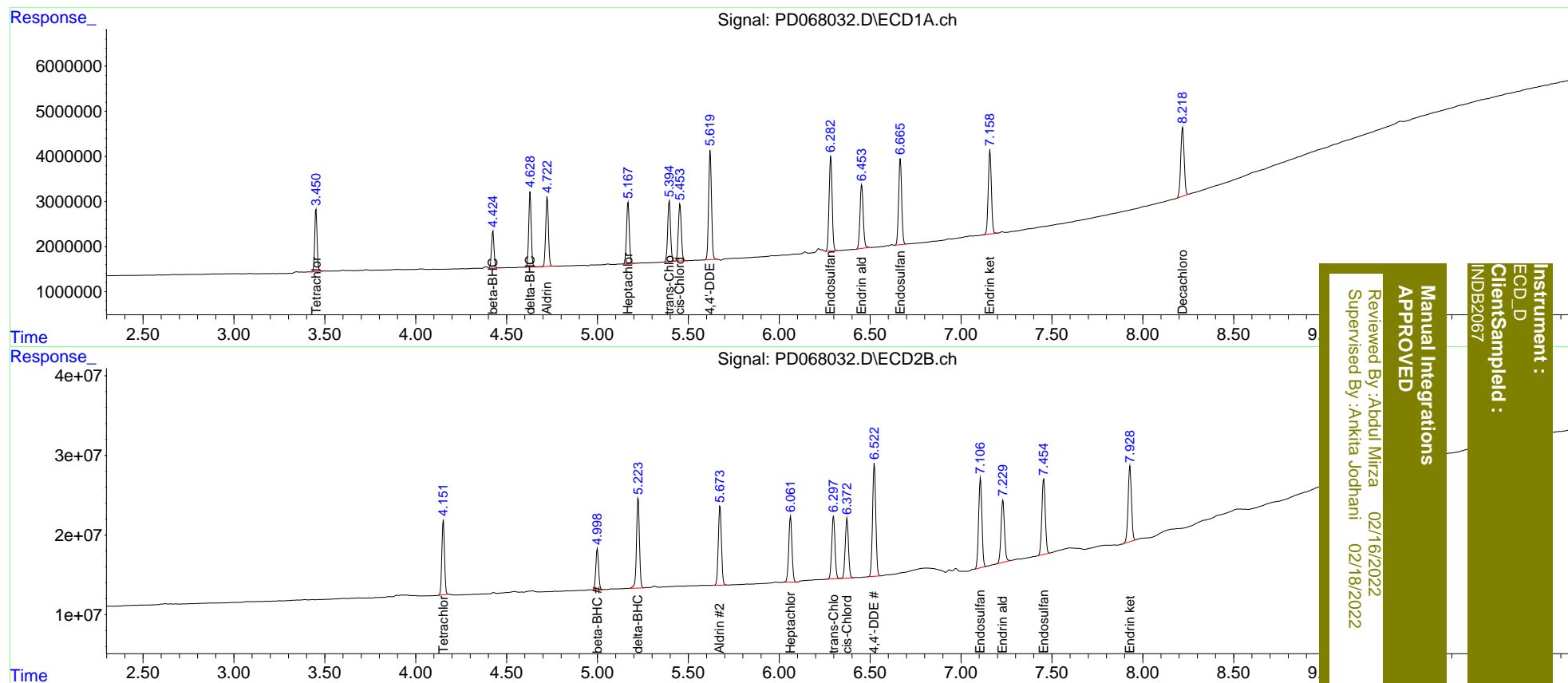
System Monitoring Compounds						
1) SA Tetrachlo...	3.452	4.152	12515001	94966329	10.126	10.682
27) SA Decachlor...	8.219	9.329	19869451	98838059	19.832	20.747
Target Compounds						
5) MB Aldrin	4.724	5.674	16301372	119.0E6	9.964	10.479
6) B beta-BHC	4.425	4.999	7929838	55030468	10.745	10.774
7) B delta-BHC	4.630	5.224	15925101	126.7E6	9.776	10.502
8) B Heptachlo...	5.169	6.062	14671313	102.9E6	10.147	10.634
10) B trans-Chl...	5.395	6.299	14669942	97487249	10.070	10.364
11) B cis-Chlor...	5.454	6.373	14387827	92798633	10.140	10.422
12) B 4,4'-DDE	5.620	6.523	26603956	174.4E6	19.408	20.593
15) B Endosulfa...	6.282	7.107	24412480	142.5E6	19.840m	20.390
18) B Endrin al...	6.454	7.231	17422570	103.0E6	19.966	20.629
19) B Endosulfa...	6.666	7.455	22093245	124.3E6	19.770	20.336
21) B Endrin ke...	7.160	7.929	22102598	121.8E6	19.358	20.098

(f)=RT Delta > 1/2 Window (#)=Amounts differ by > 25% (m)=manual int.

Data Path : Z:\pestpcbsrv\HPCHEM1\ECD_D\Data\PD021522\
 Data File : PD068032.D
 Signal(s) : Signal #1: ECD1A.ch Signal #2: ECD2B.ch
 Acq On : 15 Feb 2022 19:22
 Operator : AR\AJ
 Sample : INDB201
 Misc :
 ALS Vial : 12 Sample Multiplier: 1

Integration File signal 1: autoint1.e
 Integration File signal 2: autoint2.e
 Quant Time: Feb 16 00:45:12 2022
 Quant Method : Z:\pestpcbsrv\HPCHEM1\ECD_D\Method\PD021522CLP.M
 Quant Title : GC Extractables
 QLast Update : Wed Feb 16 00:34:36 2022
 Response via : Initial Calibration
 Integrator: ChemStation

Volume Inj. : 1 µl
 Signal #1 Phase : ZB-MR2 Signal #2 Phase: ZB-MR1
 Signal #1 Info : 30M x 0.32mm x0.2 Signal #2 Info : 30M x 0.32mm x 0.50µm



Instrument : ECD_D
 Client/Sample ID : INDB2067
 Manual Integrations APPROVED
 Reviewed By : Abdul Mirza 02/16/2022
 Supervised By : Ankita Jodhani 02/18/2022