

Data Path : Z:\pestpcbsrv\HPCHEM1\ECD_D\Data\PD021720\
 Data File : PD057328.D
 Signal(s) : Signal #1: ECD1A.ch Signal #2: ECD2B.ch
 Acq On : 17 Feb 2020 08:57
 Operator : AJ\MA
 Sample : PIBLK38
 Misc :
 ALS Vial : 2 Sample Multiplier: 1

Instrument :
 ECD_D
 ClientSampleId :
 PIBLK38

Integration File signal 1: autoint1.e
 Integration File signal 2: autoint2.e
 Quant Time: Feb 18 05:30:44 2020
 Quant Method : Z:\pestpcbsrv\HPCHEM1\ECD_D\Method\PD021020CLP.M
 Quant Title : GC Extractables
 QLast Update : Tue Feb 11 04:58:40 2020
 Response via : Initial Calibration
 Integrator: ChemStation

Volume Inj. : 1 µl
 Signal #1 Phase : ZB-MR2 Signal #2 Phase: ZB-MR1
 Signal #1 Info : 30M x 0.32mm x0.2 Signal #2 Info : 30M x 0.32mm x 0.50µm

Compound	RT#1	RT#2	Resp#1	Resp#2	ng/ml	ng/ml

System Monitoring Compounds						
1) SA Tetrachlo...	3.284	3.959	18202527	44571596	21.912	23.918
27) SA Decachlor...	7.955	8.994	37443490	74356266	36.092	32.892

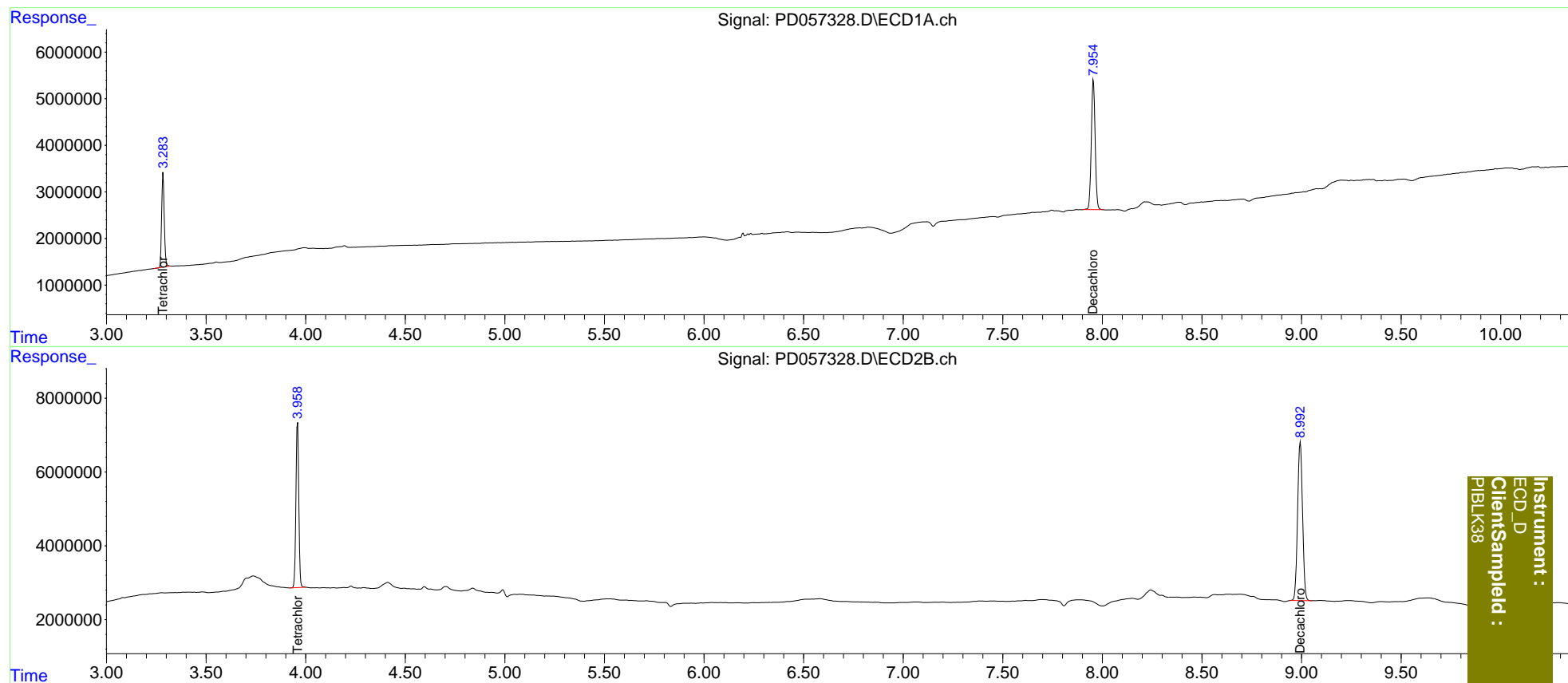
Target Compounds

 (f)=RT Delta > 1/2 Window (#)=Amounts differ by > 25% (m)=manual int.

Data Path : Z:\pestpcbsrv\HPCHEM1\ECD_D\Data\PD021720\
 Data File : PD057328.D
 Signal(s) : Signal #1: ECD1A.ch Signal #2: ECD2B.ch
 Acq On : 17 Feb 2020 08:57
 Operator : AJ\MA
 Sample : PIBLK38
 Misc :
 ALS Vial : 2 Sample Multiplier: 1

Integration File signal 1: autoint1.e
 Integration File signal 2: autoint2.e
 Quant Time: Feb 18 05:30:44 2020
 Quant Method : Z:\pestpcbsrv\HPCHEM1\ECD_D\Method\PD021020CLP.M
 Quant Title : GC Extractables
 QLast Update : Tue Feb 11 04:58:40 2020
 Response via : Initial Calibration
 Integrator: ChemStation

Volume Inj. : 1 µl
 Signal #1 Phase : ZB-MR2 Signal #2 Phase: ZB-MR1
 Signal #1 Info : 30M x 0.32mm x0.2 Signal #2 Info : 30M x 0.32mm x 0.50µm



Instrument :
 ECD_D
 ClientSampleId :
 PIBLK38