

Data Path : Z:\pestpcbsrv\HPCHEM1\ECD_D\Data\PD021720\
 Data File : PD057345.D
 Signal(s) : Signal #1: ECD1A.ch Signal #2: ECD2B.ch
 Acq On : 17 Feb 2020 13:33
 Operator : AJ\MA
 Sample : L1418-15
 Misc :
 ALS Vial : 19 Sample Multiplier: 1

Instrument :
 ECD_D
ClientSampled :
 C5B15

Manual Integrations
APPROVED
 Sohil
 2/19/2020 3:53:26 PM

Integration File signal 1: autoint1.e
 Integration File signal 2: autoint2.e
 Quant Time: Feb 18 05:36:40 2020
 Quant Method : Z:\pestpcbsrv\HPCHEM1\ECD_D\Method\PD021020CLP.M
 Quant Title : GC Extractables
 QLast Update : Tue Feb 11 04:58:40 2020
 Response via : Initial Calibration
 Integrator: ChemStation

Volume Inj. : 1 µl
 Signal #1 Phase : ZB-MR2 Signal #2 Phase: ZB-MR1
 Signal #1 Info : 30M x 0.32mm x0.2 Signal #2 Info : 30M x 0.32mm x 0.50µm

Compound	RT#1	RT#2	Resp#1	Resp#2	ng/ml	ng/ml

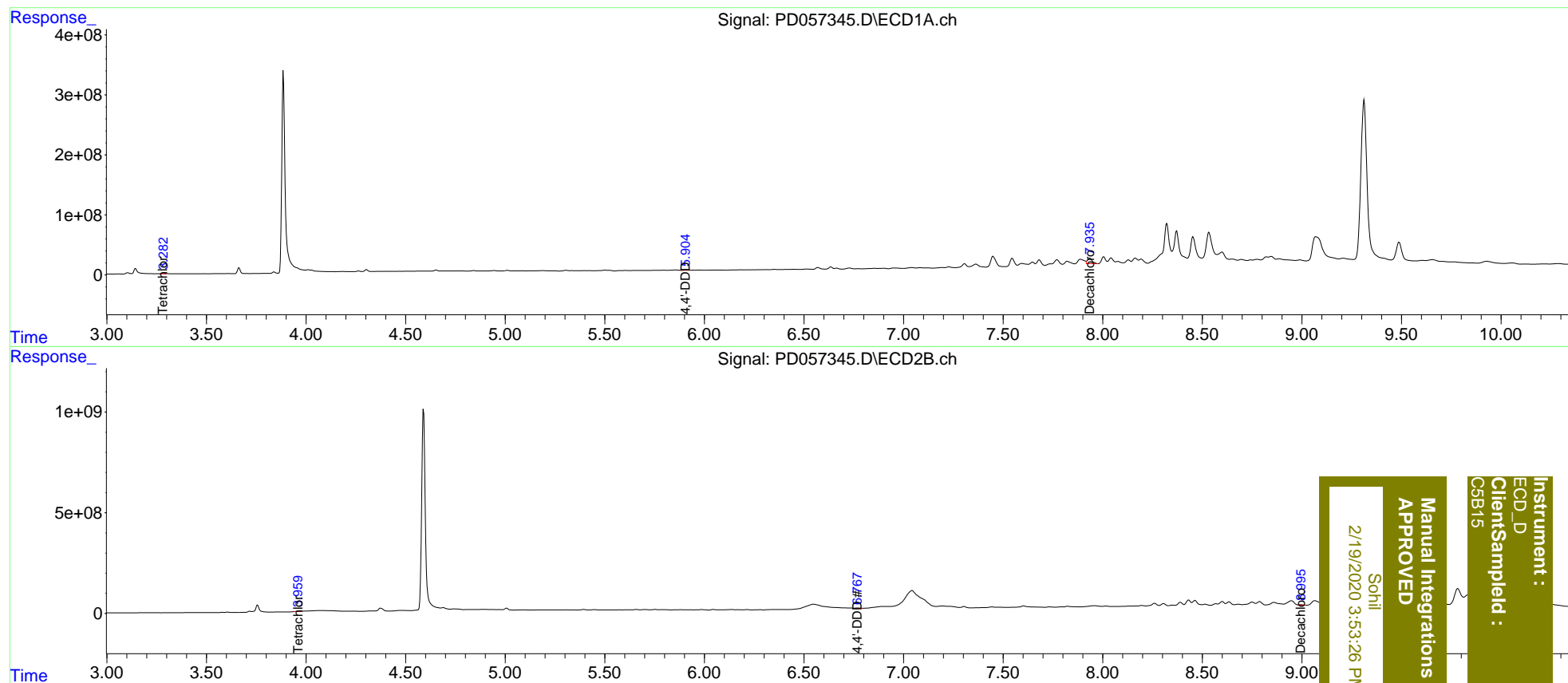
System Monitoring Compounds						
1) SA Tetrachlo...	3.282	3.959	10804055	41741791	13.006m	22.400m#
27) SA Decachlor...	7.935	8.995	132.0E6	43112280	127.261m	19.071m#
Target Compounds						
16) A 4,4'-DDD	5.904	6.767	6815072	26225459	9.838m	12.720m#

(f)=RT Delta > 1/2 Window (#)=Amounts differ by > 25% (m)=manual int.

Data Path : Z:\pestpcbsrv\HPCHEM1\ECD_D\Data\PD021720\
 Data File : PD057345.D
 Signal(s) : Signal #1: ECD1A.ch Signal #2: ECD2B.ch
 Acq On : 17 Feb 2020 13:33
 Operator : AJ\MA
 Sample : L1418-15
 Misc :
 ALS Vial : 19 Sample Multiplier: 1

Integration File signal 1: autoint1.e
 Integration File signal 2: autoint2.e
 Quant Time: Feb 18 05:36:40 2020
 Quant Method : Z:\pestpcbsrv\HPCHEM1\ECD_D\Method\PD021020CLP.M
 Quant Title : GC Extractables
 QLast Update : Tue Feb 11 04:58:40 2020
 Response via : Initial Calibration
 Integrator: ChemStation

Volume Inj. : 1 µl
 Signal #1 Phase : ZB-MR2 Signal #2 Phase: ZB-MR1
 Signal #1 Info : 30M x 0.32mm x0.2 Signal #2 Info : 30M x 0.32mm x 0.50µm



Instrument : ECD_D
 Client Sampled : C5B15
 Manual Integrations APPROVED
 2/19/2020 3:53:26 PM
 Sohli

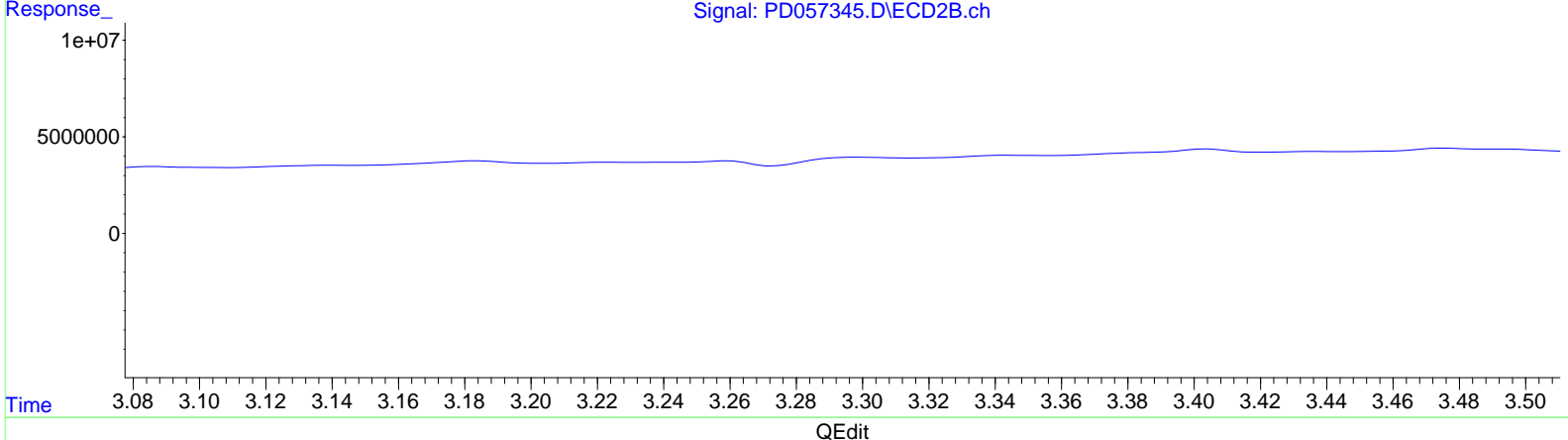
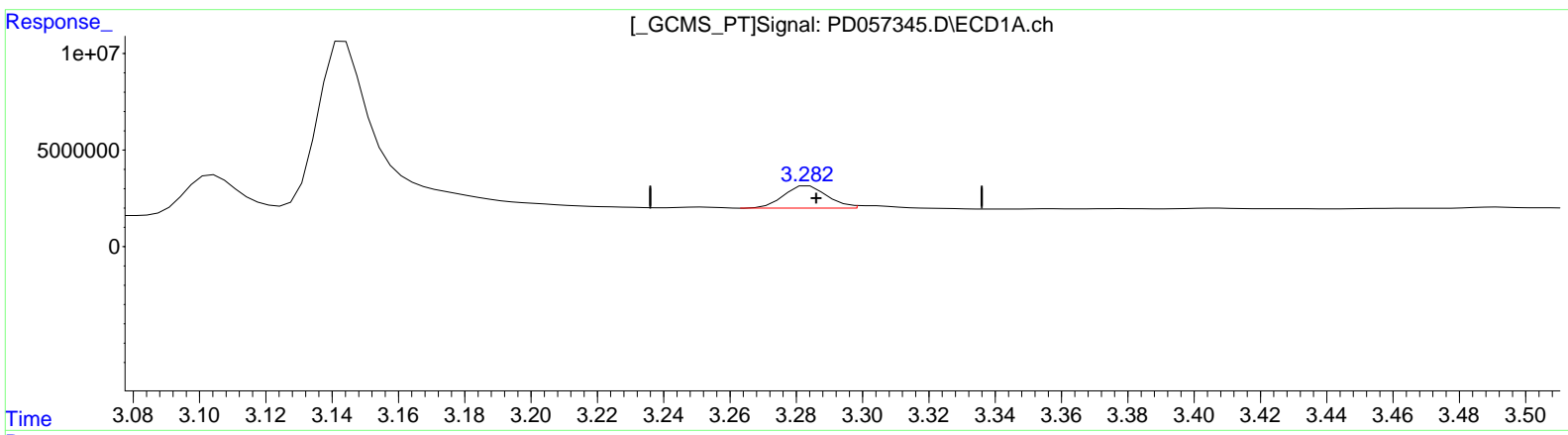
Data Path : Z:\pestpcbsrv\HPCHEM1\ECD_D\Data\PD021720\
 Data File : PD057345.D
 Signal(s) : Signal #1: ECD1A.ch Signal #2: ECD2B.ch
 Acq On : 17 Feb 2020 13:33
 Operator : AJ\MA
 Sample : L1418-15
 Misc :
 ALS Vial : 19 Sample Multiplier: 1

Instrument :
 ECD_D
ClientSampled :
 C5B15

Manual Integrations
APPROVED
 Sohil
 2/19/2020 3:53:26 PM

Integration File signal 1: autoint1.e
 Integration File signal 2: autoint2.e
 Quant Time: Feb 18 05:36:40 2020
 Quant Method : Z:\pestpcbsrv\HPCHEM1\ECD_D\Method\PD021020CLP.M
 Quant Title : GC Extractables
 QLast Update : Tue Feb 11 04:58:40 2020
 Response via : Initial Calibration
 Integrator: ChemStation

Volume Inj. : 1 µl
 Signal #1 Phase : ZB-MR2 Signal #2 Phase: ZB-MR1
 Signal #1 Info : 30M x 0.32mm x0.2 Signal #2 Info : 30M x 0.32mm x 0.50µm



QEdit

(1) Tetrachloro-m-xylene (SA)
 3.282min 13.006 ng/ml m
 response 10804055

(1) Tetrachloro-m-xylene #2 (SA)
 3.959min 22.400 ng/ml m
 response 41741791

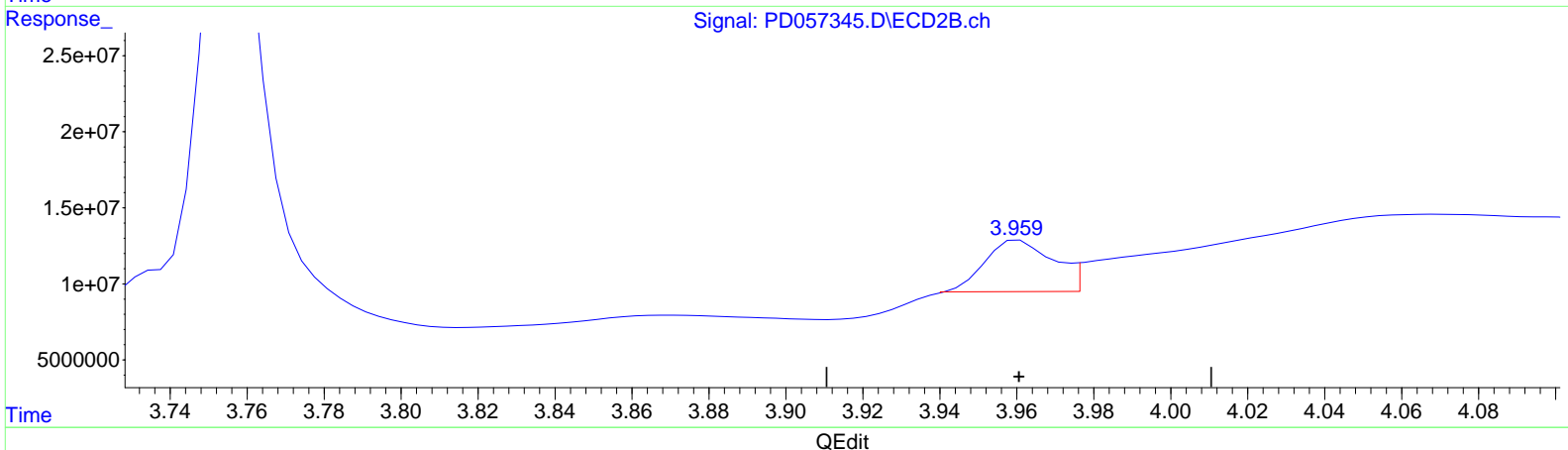
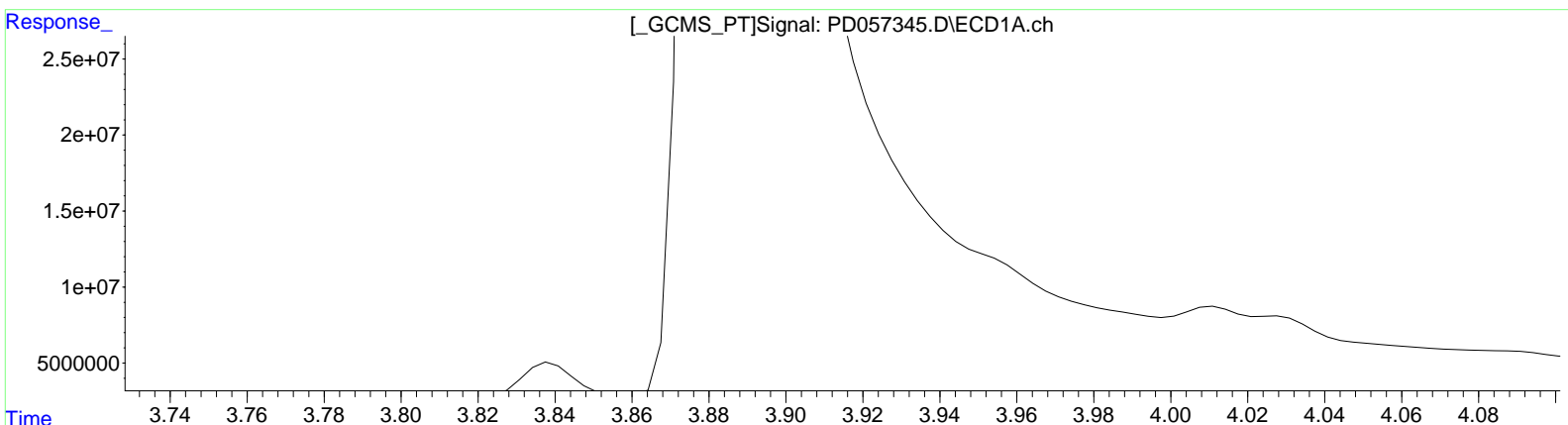
Data Path : Z:\pestpcbsrv\HPCHEM1\ECD_D\Data\PD021720\
 Data File : PD057345.D
 Signal(s) : Signal #1: ECD1A.ch Signal #2: ECD2B.ch
 Acq On : 17 Feb 2020 13:33
 Operator : AJ\MA
 Sample : L1418-15
 Misc :
 ALS Vial : 19 Sample Multiplier: 1

Instrument :
 ECD_D
ClientSampled :
 C5B15

Manual Integrations
APPROVED
 Sohil
 2/19/2020 3:53:26 PM

Integration File signal 1: autoint1.e
 Integration File signal 2: autoint2.e
 Quant Time: Feb 18 05:36:40 2020
 Quant Method : Z:\pestpcbsrv\HPCHEM1\ECD_D\Method\PD021020CLP.M
 Quant Title : GC Extractables
 QLast Update : Tue Feb 11 04:58:40 2020
 Response via : Initial Calibration
 Integrator: ChemStation

Volume Inj. : 1 µl
 Signal #1 Phase : ZB-MR2 Signal #2 Phase: ZB-MR1
 Signal #1 Info : 30M x 0.32mm x0.2 Signal #2 Info : 30M x 0.32mm x 0.50µm



(1) Tetrachloro-m-xylene (SA)
 3.282min 13.006 ng/ml m
 response 10804055

(1) Tetrachloro-m-xylene #2 (SA)
 3.959min 22.400 ng/ml m
 response 41741791