

Data Path : Z:\pestpcbsrv\HPCHEM1\ECD_D\Data\PD021720\
 Data File : PD057360.D
 Signal(s) : Signal #1: ECD1A.ch Signal #2: ECD2B.ch
 Acq On : 17 Feb 2020 17:21
 Operator : AJ\MA
 Sample : INDB318
 Misc :
 ALS Vial : 33 Sample Multiplier: 1

Instrument :
 ECD_D
ClientSampled :
 INDB318

Manual Integrations
APPROVED
 Sohil
 2/19/2020 3:53:45 PM

Integration File signal 1: autoint1.e
 Integration File signal 2: autoint2.e
 Quant Time: Feb 18 06:00:46 2020
 Quant Method : Z:\pestpcbsrv\HPCHEM1\ECD_D\Method\PD021020CLP.M
 Quant Title : GC Extractables
 QLast Update : Tue Feb 11 04:58:40 2020
 Response via : Initial Calibration
 Integrator: ChemStation

Volume Inj. : 1 µl
 Signal #1 Phase : ZB-MR2 Signal #2 Phase: ZB-MR1
 Signal #1 Info : 30M x 0.32mm x0.2 Signal #2 Info : 30M x 0.32mm x 0.50µm

Compound	RT#1	RT#2	Resp#1	Resp#2	ng/ml	ng/ml

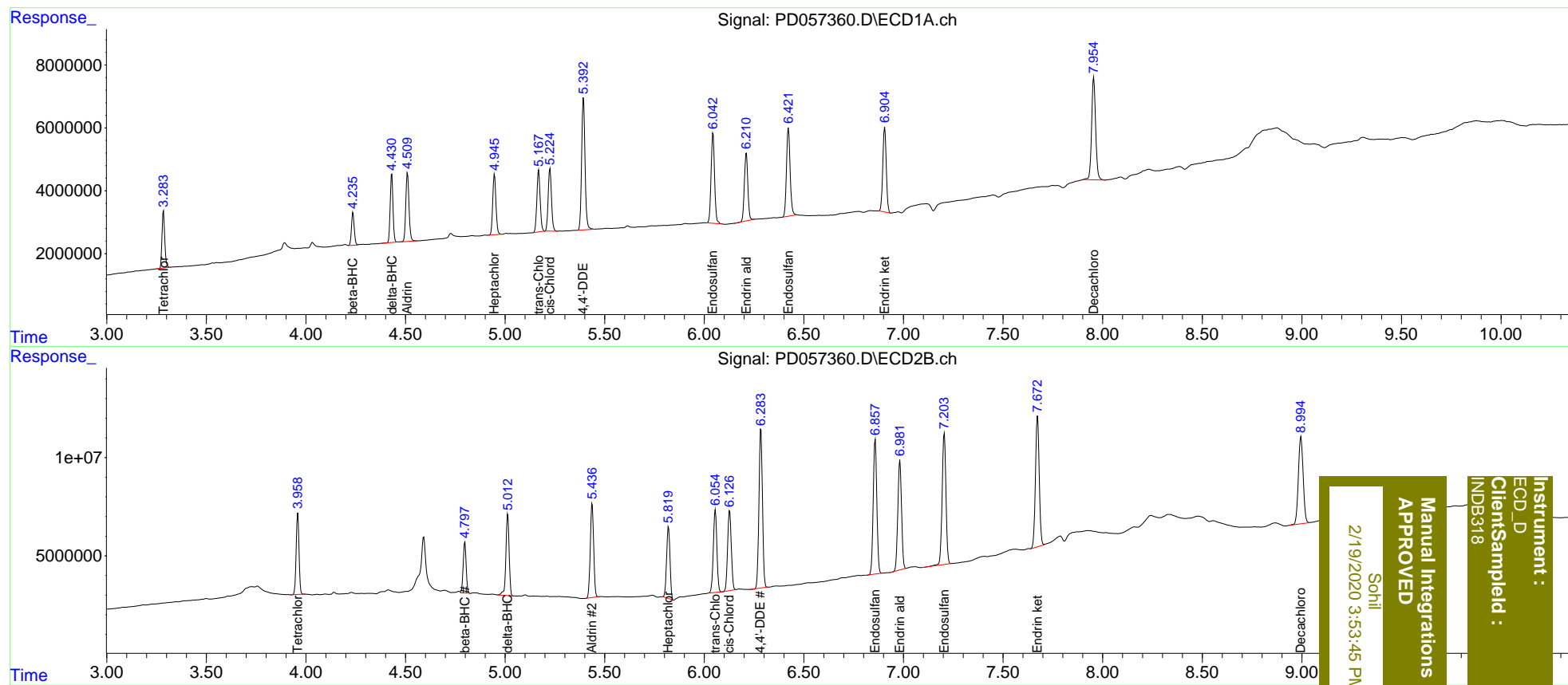
System Monitoring Compounds						
1) SA Tetrachlo...	3.285	3.959	17274555	40985977	20.795	21.994
27) SA Decachlor...	7.955	8.996	45558440	73386970	43.915	32.463 #
Target Compounds						
5) MB Aldrin	4.510	5.437	24421721	56390035	21.503	20.394
6) B beta-BHC	4.235	4.798	10160329	26881163	20.345m	23.188
7) B delta-BHC	4.431	5.012	21203827	46364629	17.010	17.721m
8) B Heptachlo...	4.947	5.820	21358245	43153989	20.598	17.505
10) B trans-Chl...	5.168	6.056	22667360	52097544	20.971	19.056
11) B cis-Chlor...	5.225	6.127	22758200	51802304	21.294	20.221
12) B 4,4'-DDE	5.393	6.284	49759532	99088238	45.002	38.719
15) B Endosulfa...	6.042	6.858	34914663	85723377	36.641m	36.606
18) B Endrin al...	6.211	6.982	26440081	72270793	32.570	36.482
19) B Endosulfa...	6.422	7.205	35745546	88407361	40.086	37.676
21) B Endrin ke...	6.904	7.672	32579926	87666665	35.871m	36.136m

(f)=RT Delta > 1/2 Window (#)=Amounts differ by > 25% (m)=manual int.

Data Path : Z:\pestpcbsrv\HPCHEM1\ECD_D\Data\PD021720\
 Data File : PD057360.D
 Signal(s) : Signal #1: ECD1A.ch Signal #2: ECD2B.ch
 Acq On : 17 Feb 2020 17:21
 Operator : AJ\MA
 Sample : INDB318
 Misc :
 ALS Vial : 33 Sample Multiplier: 1

Integration File signal 1: autoint1.e
 Integration File signal 2: autoint2.e
 Quant Time: Feb 18 06:00:46 2020
 Quant Method : Z:\pestpcbsrv\HPCHEM1\ECD_D\Method\PD021020CLP.M
 Quant Title : GC Extractables
 QLast Update : Tue Feb 11 04:58:40 2020
 Response via : Initial Calibration
 Integrator: ChemStation

Volume Inj. : 1 µl
 Signal #1 Phase : ZB-MR2 Signal #2 Phase: ZB-MR1
 Signal #1 Info : 30M x 0.32mm x0.2 Signal #2 Info : 30M x 0.32mm x 0.50µm



Instrument :
 ECD_D
 ClientSampleId :
 INDB318

Manual Integrations
 APPROVED
 Sohil
 2/19/2020 3:53:45 PM