

Data Path : Z:\pestpcbsrv\HPCHEM1\ECD_D\Data\PD021920\
 Data File : PD057381.D
 Signal(s) : Signal #1: ECD1A.ch Signal #2: ECD2B.ch
 Acq On : 19 Feb 2020 17:38
 Operator : AJ\MA
 Sample : INDB201
 Misc :
 ALS Vial : 12 Sample Multiplier: 1

Instrument :
 ECD_D
 ClientSampleId :
 INDB201

Integration File signal 1: autoint1.e
 Integration File signal 2: autoint2.e
 Quant Time: Feb 20 04:49:19 2020
 Quant Method : Z:\pestpcbsrv\HPCHEM1\ECD_D\Method\PD021920CLP.M
 Quant Title : GC Extractables
 QLast Update : Thu Feb 20 04:39:44 2020
 Response via : Initial Calibration
 Integrator: ChemStation

Volume Inj. : 1 µl
 Signal #1 Phase : ZB-MR2 Signal #2 Phase: ZB-MR1
 Signal #1 Info : 30M x 0.32mm x0.2 Signal #2 Info : 30M x 0.32mm x 0.50µm

Compound	RT#1	RT#2	Resp#1	Resp#2	ng/ml	ng/ml

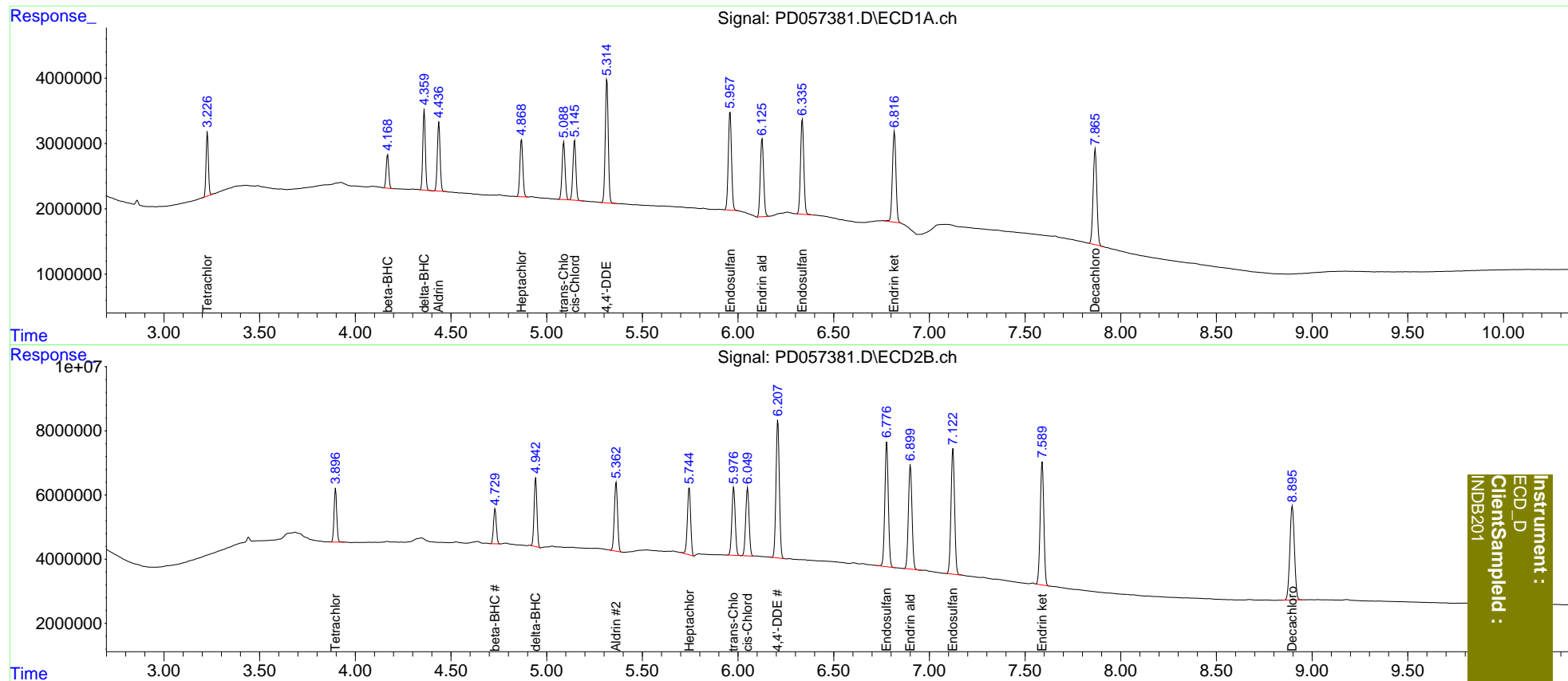
System Monitoring Compounds						
1) SA Tetrachlo...	3.228	3.897	8373118	16335745	10.296	10.586
27) SA Decachlor...	7.867	8.896	19786165	48693021	21.271	21.429
Target Compounds						
5) MB Aldrin	4.437	5.363	10576627	25015602	10.144	10.365
6) B beta-BHC	4.169	4.731	4821926	11003226	10.318	10.377
7) B delta-BHC	4.360	4.943	11354905	22098518	10.135	9.742
8) B Heptachlo...	4.869	5.745	9422728	24993467	10.165	10.592
10) B trans-Chl...	5.090	5.978	9739729	25731679	10.270	10.443
11) B cis-Chlor...	5.146	6.050	9924559	26172127	10.339	10.503
12) B 4,4'-DDE	5.315	6.208	20664715	52375479	20.264	20.313
15) B Endosulfa...	5.959	6.777	17672064	49109252	20.290	20.763
18) B Endrin al...	6.126	6.901	14434585	42752462	20.190	20.740
19) B Endosulfa...	6.336	7.123	17373718	51047328	20.167	20.587
21) B Endrin ke...	6.817	7.590	17749887	50722032	20.072	20.288

(f)=RT Delta > 1/2 Window (#)=Amounts differ by > 25% (m)=manual int.

Data Path : Z:\pestpcbsrv\HPCHEM1\ECD_D\Data\PD021920\
 Data File : PD057381.D
 Signal(s) : Signal #1: ECD1A.ch Signal #2: ECD2B.ch
 Acq On : 19 Feb 2020 17:38
 Operator : AJ\MA
 Sample : INDB201
 Misc :
 ALS Vial : 12 Sample Multiplier: 1

Integration File signal 1: autoint1.e
 Integration File signal 2: autoint2.e
 Quant Time: Feb 20 04:49:19 2020
 Quant Method : Z:\pestpcbsrv\HPCHEM1\ECD_D\Method\PD021920CLP.M
 Quant Title : GC Extractables
 QLast Update : Thu Feb 20 04:39:44 2020
 Response via : Initial Calibration
 Integrator: ChemStation

Volume Inj. : 1 µl
 Signal #1 Phase : ZB-MR2 Signal #2 Phase: ZB-MR1
 Signal #1 Info : 30M x 0.32mm x0.2 Signal #2 Info : 30M x 0.32mm x 0.50µm



Instrument :
 ECD_D
 ClientSampleId :
 INDB201