

Data Path : Z:\pestpcbsrv\HPCHEM1\ECD_D\Data\PD022120\
 Data File : PD057419.D
 Signal(s) : Signal #1: ECD1A.ch Signal #2: ECD2B.ch
 Acq On : 21 Feb 2020 17:01
 Operator : AJ\MA
 Sample : INDA301
 Misc :
 ALS Vial : 14 Sample Multiplier: 1

Instrument :
 ECD_D
 ClientSampleId :
 INDA301

Integration File signal 1: autoint1.e
 Integration File signal 2: autoint2.e
 Quant Time: Feb 24 16:07:24 2020
 Quant Method : Z:\pestpcbsrv\HPCHEM1\ECD_D\Method\PD022120CLP.M
 Quant Title : GC Extractables
 QLast Update : Mon Feb 24 16:06:26 2020
 Response via : Initial Calibration
 Integrator: ChemStation

Volume Inj. : 1 µl
 Signal #1 Phase : ZB-MR2 Signal #2 Phase: ZB-MR1
 Signal #1 Info : 30M x 0.32mm x0.2 Signal #2 Info : 30M x 0.32mm x 0.50µm

	Compound	RT#1	RT#2	Resp#1	Resp#2	ng/ml	ng/ml

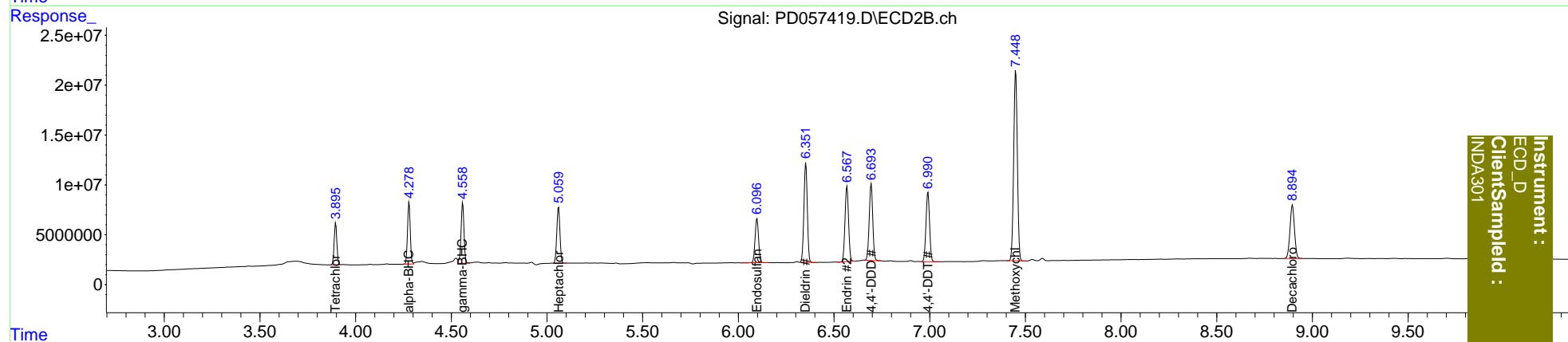
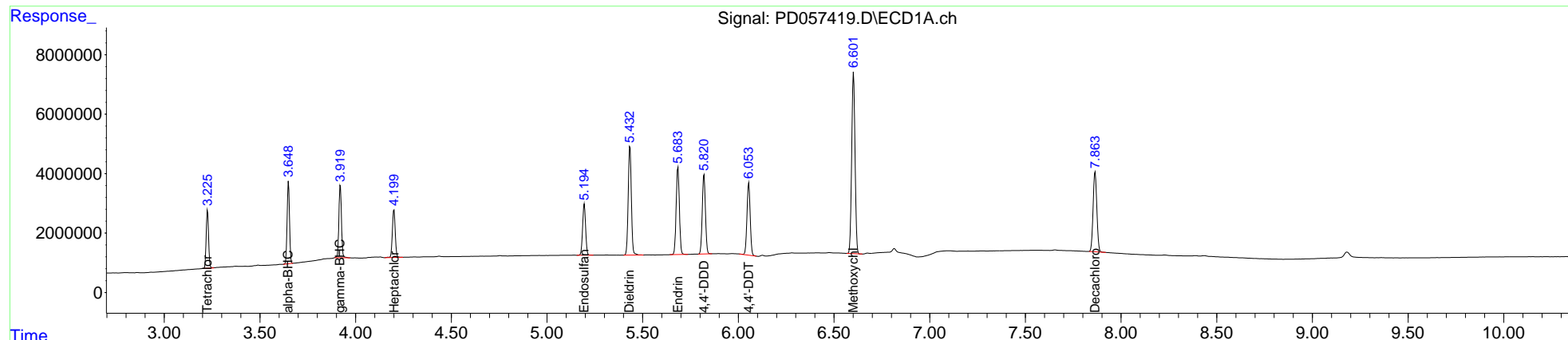
System Monitoring Compounds							
1)	SA Tetrachlo...	3.227	3.896	17079255	40618506	20.000	20.000
27)	SA Decachlor...	7.864	8.895	36296654	87642173	40.000	40.000
Target Compounds							
2)	A alpha-BHC	3.649	4.280	23780639	61453886	20.000	20.000
3)	MA gamma-BHC...	3.920	4.560	22860884	64328706	20.000	20.000
4)	MA Heptachlor	4.201	5.061	16744233	64316835	20.000	20.000
9)	A Endosulfan I	5.195	6.098	18613728	55909747	20.000	20.000
13)	MA Dieldrin	5.434	6.353	41645453	122.2E6	40.000	40.000
14)	MA Endrin	5.684	6.568	34348049	97151627	40.000	40.000
16)	A 4,4'-DDD	5.821	6.695	30599397	98424192	40.000	40.000
17)	MA 4,4'-DDT	6.055	6.991	28334303	90682703	40.000	40.000
20)	A Methoxychlor	6.602	7.450	74111910	254.4E6	200.000	200.000

(f)=RT Delta > 1/2 Window (#)=Amounts differ by > 25% (m)=manual int.

Data Path : Z:\pestpcbsrv\HPCHEM1\ECD_D\Data\PD022120\
 Data File : PD057419.D
 Signal(s) : Signal #1: ECD1A.ch Signal #2: ECD2B.ch
 Acq On : 21 Feb 2020 17:01
 Operator : AJ\MA
 Sample : INDA301
 Misc :
 ALS Vial : 14 Sample Multiplier: 1

Integration File signal 1: autoint1.e
 Integration File signal 2: autoint2.e
 Quant Time: Feb 24 16:07:24 2020
 Quant Method : Z:\pestpcbsrv\HPCHEM1\ECD_D\Method\PD022120CLP.M
 Quant Title : GC Extractables
 QLast Update : Mon Feb 24 16:06:26 2020
 Response via : Initial Calibration
 Integrator: ChemStation

Volume Inj. : 1 µl
 Signal #1 Phase : ZB-MR2 Signal #2 Phase: ZB-MR1
 Signal #1 Info : 30M x 0.32mm x0.2 Signal #2 Info : 30M x 0.32mm x 0.50µm



Instrument :
 ECD_D
 ClientSampleId :
 INDA301