

Data Path : Z:\pestpcbsrv\HPCHEM1\ECD_D\Data\PD022121\
 Data File : PD061347.D
 Signal(s) : Signal #1: ECD1A.ch Signal #2: ECD2B.ch
 Acq On : 21 Feb 2021 18:18
 Operator : DD\AJ
 Sample : M1379-18
 Misc :
 ALS Vial : 27 Sample Multiplier: 1

Instrument :
 ECD_D
 ClientSampleId :
 DBH15

Integration File signal 1: autoint1.e
 Integration File signal 2: autoint2.e
 Quant Time: Feb 22 04:56:45 2021
 Quant Method : Z:\pestpcbsrv\HPCHEM1\ECD_D\Method\PD022121CLP.M
 Quant Title : GC Extractables
 QLast Update : Mon Feb 22 04:35:05 2021
 Response via : Initial Calibration
 Integrator: ChemStation

Volume Inj. : 1 µl
 Signal #1 Phase : ZB-MR2 Signal #2 Phase: ZB-MR1
 Signal #1 Info : 30M x 0.32mm x 0.2 Signal #2 Info : 30M x 0.32mm x 0.50µm

Compound	RT#1	RT#2	Resp#1	Resp#2	ng/ml	ng/ml

System Monitoring Compounds						
1) SA Tetrachlo...	3.487	3.982	9061442	75573424	9.840	9.038
27) SA Decachlor...	8.261	9.037	20032005	113.8E6	16.282	15.829
Target Compounds						
2) A alpha-BHC	3.882f	4.397f	791811	12556978	0.599	0.978 #
3) MA gamma-BHC...	4.232	4.654	16194294	2288054	12.588	0.196 #
4) MA Heptachlor	0.000	5.194f	0	2504989	N.D.	0.212
6) B beta-BHC	0.000	4.795f	0	4963396	N.D.	1.010
7) B delta-BHC	0.000	5.016	0	12897995	N.D.	1.106
8) B Heptachlor...	0.000	5.816f	0	2306997	N.D.	0.232
9) A Endosulfan I	0.000	6.213	0	1037207	N.D.	0.112
10) B trans-Chl...	0.000	6.069	0	19543387	N.D.	1.957
11) B cis-Chlor...	0.000	6.153	0	8049984	N.D.	0.847
12) B 4,4'-DDE	0.000	6.272f	0	2696327	N.D.	0.283
13) MA Dieldrin	0.000	6.491	0	7893877	N.D.	0.803
14) MA Endrin	0.000	6.680	0	5369324	N.D.	0.696
15) B Endosulfa...	6.269f	6.906	4258170	783804	4.200	0.102 #
16) A 4,4'-DDD	0.000	6.799	0	16071652	N.D.	2.097
17) MA 4,4'-DDT	0.000	7.117	0	2155053	N.D.	0.289
18) B Endrin al...	0.000	7.006	0	1138130	N.D.	0.182
19) B Endosulfa...	0.000	7.180f	0	1966593	N.D.	0.269
20) A Methoxychlor	7.013f	7.616f	260352	2089246	0.467	0.598 #
21) B Endrin ke...	0.000	7.735	0	458568	N.D.	<MDL
22) Toxaphene-1	0.000	6.362	0	1146639	N.D.	20.582
23) Toxaphene-2	0.000	6.680	0	5369324	N.D.	77.790
24) Toxaphene-3	6.269	7.079	4258170	5007699	388.063	52.642 #
25) Toxaphene-4	0.000	7.117	0	2155053	N.D.	8.389
26) Toxaphene-5	0.000	7.616	0	2089246	N.D.	19.305

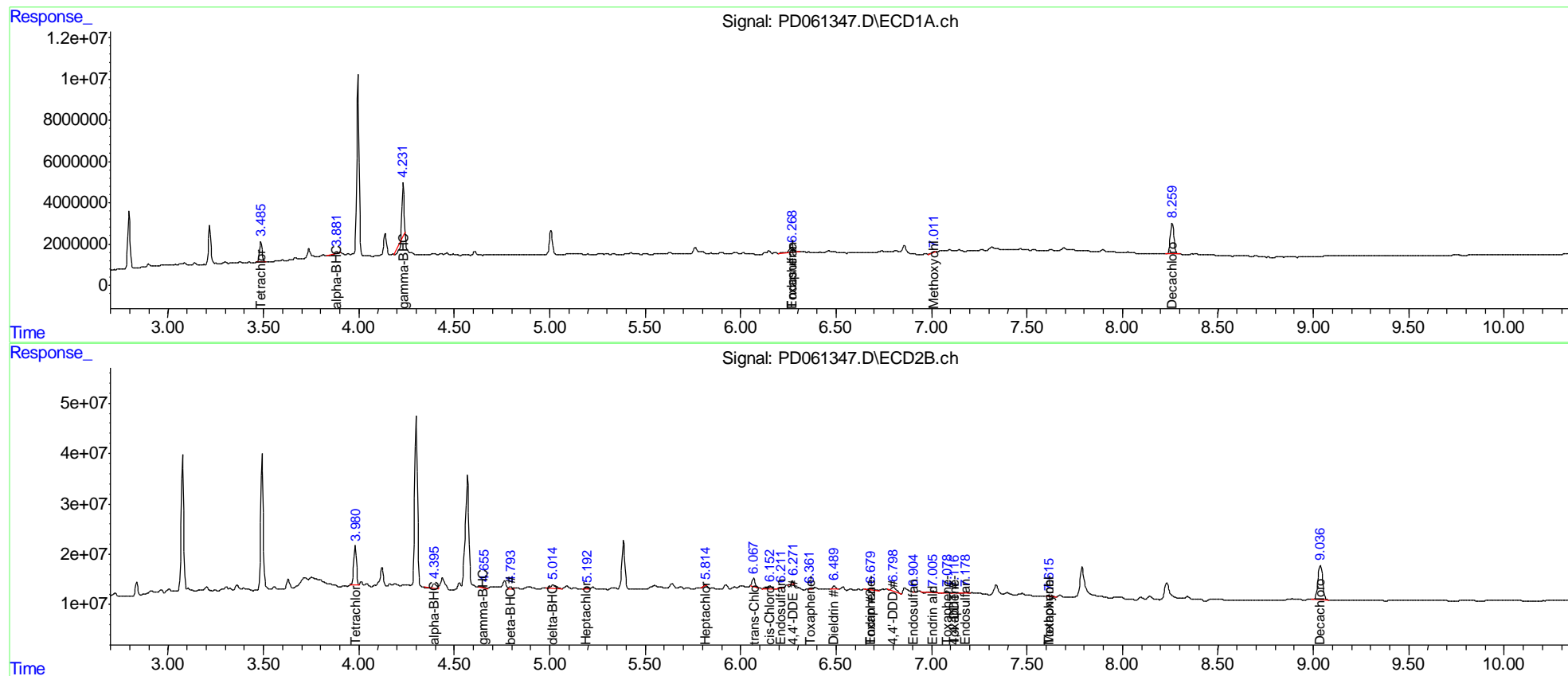
(f)=RT Delta > 1/2 Window (#)=Amounts differ by > 25% (m)=manual int.

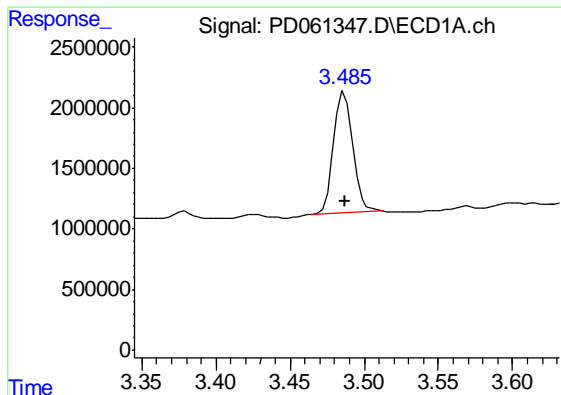
Data Path : Z:\pestpcbsrv\HPCHEM1\ECD_D\Data\PD022121\
 Data File : PD061347.D
 Signal(s) : Signal #1: ECD1A.ch Signal #2: ECD2B.ch
 Acq On : 21 Feb 2021 18:18
 Operator : DD\AJ
 Sample : M1379-18
 Misc :
 ALS Vial : 27 Sample Multiplier: 1

Instrument :
 ECD_D
 Client Sampled :
 DBH15

Integration File signal 1: autoint1.e
 Integration File signal 2: autoint2.e
 Quant Time: Feb 22 04:56:45 2021
 Quant Method : Z:\pestpcbsrv\HPCHEM1\ECD_D\Method\PD022121CLP.M
 Quant Title : GC Extractables
 QLast Update : Mon Feb 22 04:35:05 2021
 Response via : Initial Calibration
 Integrator: ChemStation

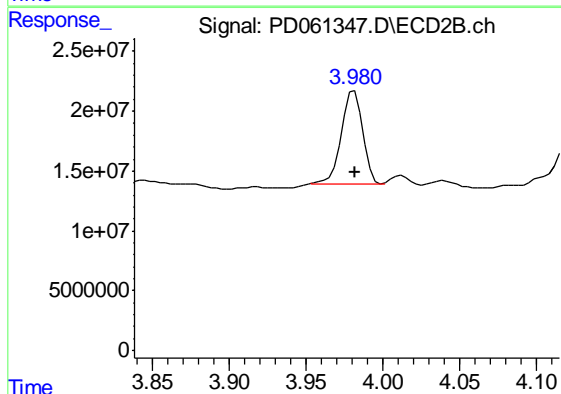
Volume Inj. : 1 µl
 Signal #1 Phase : ZB-MR2 Signal #2 Phase: ZB-MR1
 Signal #1 Info : 30M x 0.32mm x0.2 Signal #2 Info : 30M x 0.32mm x 0.50µm



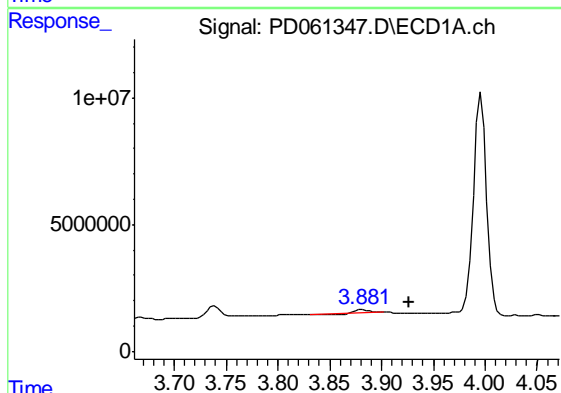


#1 Tetrachloro-m-xylene
 R.T.: 3.487 min
 Delta R.T.: 0.000 min
 Response: 9061442
 Conc: 9.84 ng/ml

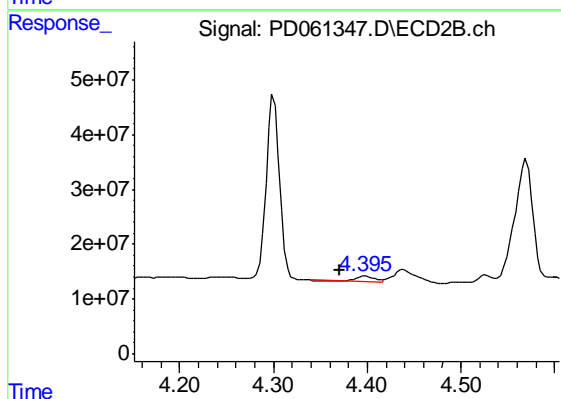
Instrument :
 ECD_D
 ClientSampleId :
 DBH15



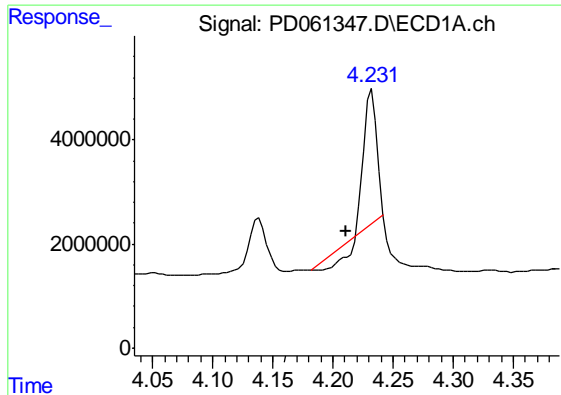
#1 Tetrachloro-m-xylene
 R.T.: 3.982 min
 Delta R.T.: 0.000 min
 Response: 75573424
 Conc: 9.04 ng/ml



#2 alpha-BHC
 R.T.: 3.882 min
 Delta R.T.: -0.044 min
 Response: 791811
 Conc: 0.60 ng/ml



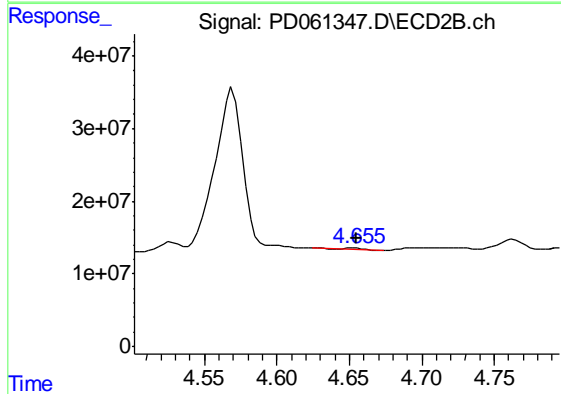
#2 alpha-BHC
 R.T.: 4.397 min
 Delta R.T.: 0.026 min
 Response: 12556978
 Conc: 0.98 ng/ml



#3 gamma-BHC (Lindane)

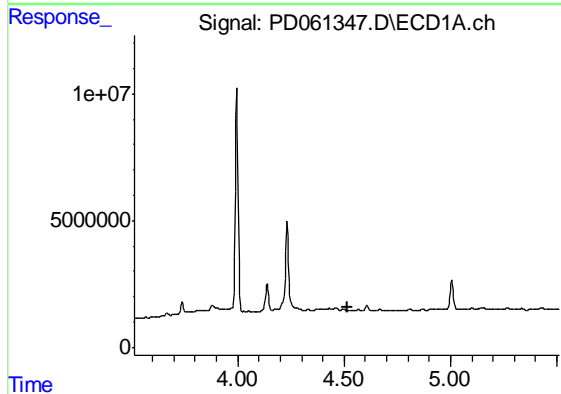
R.T.: 4.232 min
Delta R.T.: 0.021 min
Response: 16194294
Conc: 12.59 ng/ml

Instrument :
ECD_D
ClientSampleId :
DBH15



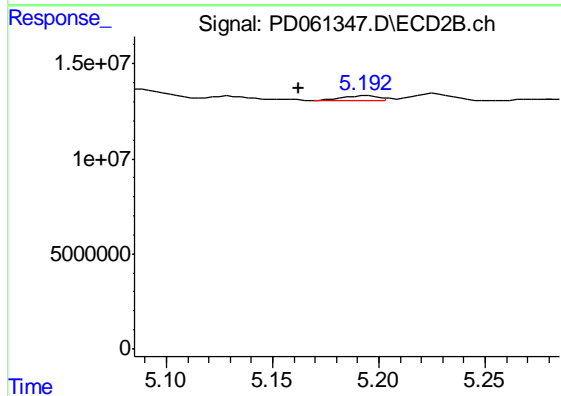
#3 gamma-BHC (Lindane)

R.T.: 4.654 min
Delta R.T.: 0.000 min
Response: 2288054
Conc: 0.20 ng/ml



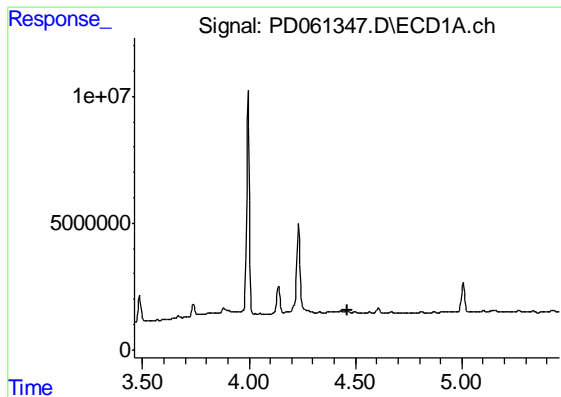
#4 Heptachlor

R.T.: 0.000 min
Exp R.T. : 4.515 min
Response: 0
Conc: N.D.



#4 Heptachlor

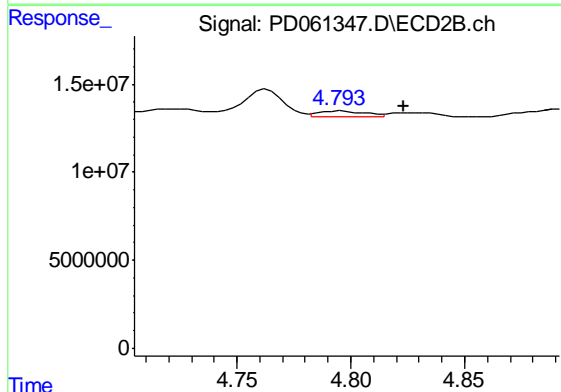
R.T.: 5.194 min
Delta R.T.: 0.031 min
Response: 2504989
Conc: 0.21 ng/ml



#6 beta-BHC

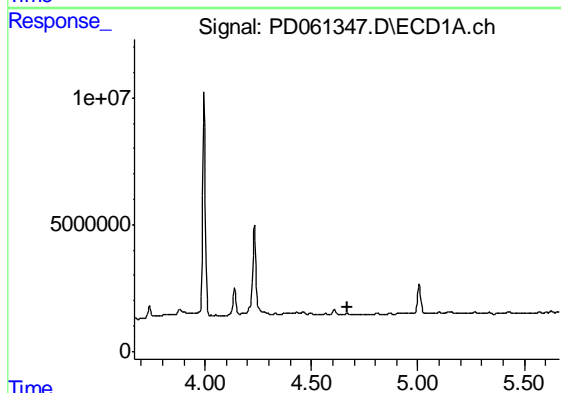
R.T.: 0.000 min
 Exp R.T. : 4.461 min
 Response: 0
 Conc: N.D.

Instrument :
 ECD_D
 ClientSampleId :
 DBH15



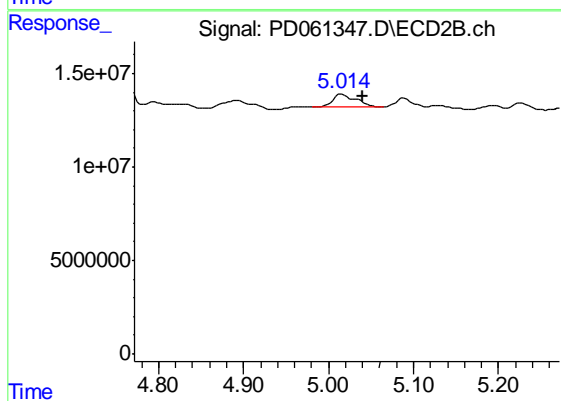
#6 beta-BHC

R.T.: 4.795 min
 Delta R.T.: -0.028 min
 Response: 4963396
 Conc: 1.01 ng/ml



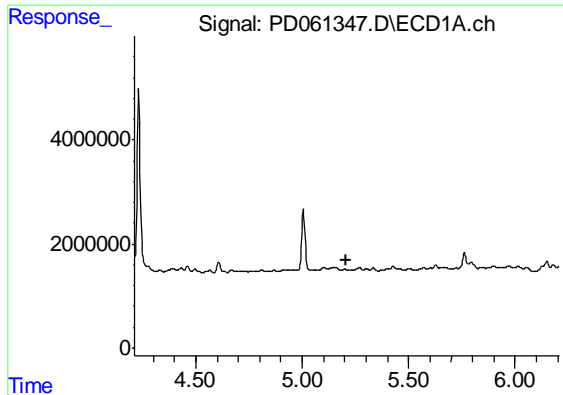
#7 delta-BHC

R.T.: 0.000 min
 Exp R.T. : 4.668 min
 Response: 0
 Conc: N.D.



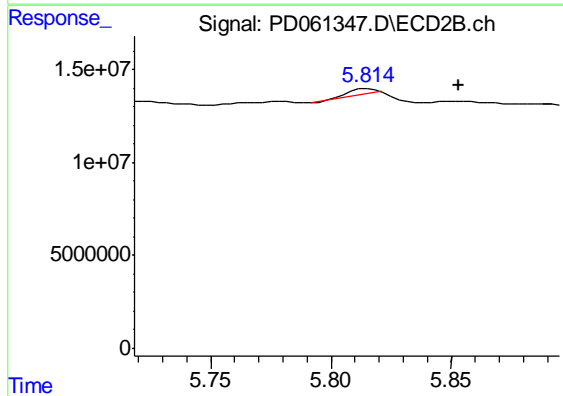
#7 delta-BHC

R.T.: 5.016 min
 Delta R.T.: -0.024 min
 Response: 12897995
 Conc: 1.11 ng/ml

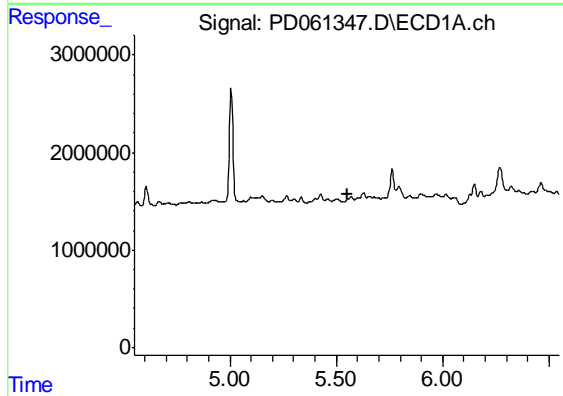


#8 Heptachlor epoxide
 R.T.: 0.000 min
 Exp R.T. : 5.209 min
 Response: 0
 Conc: N.D.

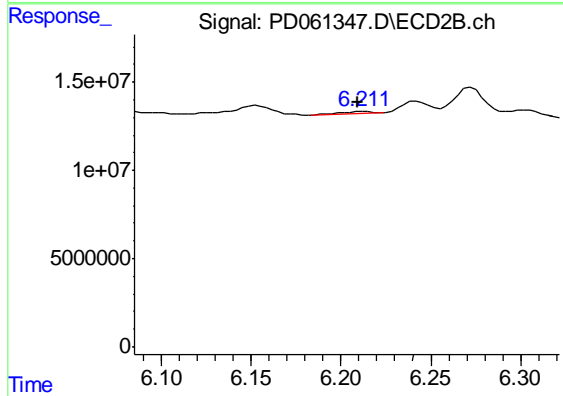
Instrument :
 ECD_D
 ClientSampleId :
 DBH15



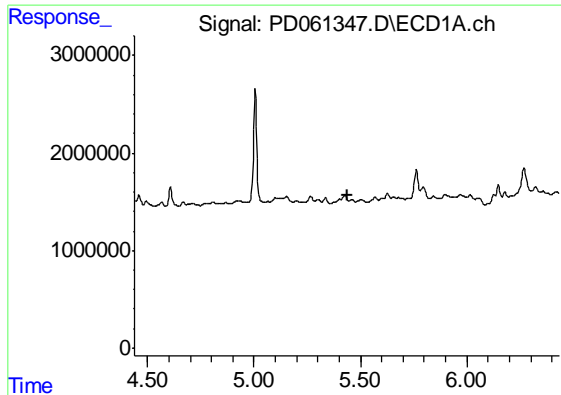
#8 Heptachlor epoxide
 R.T.: 5.816 min
 Delta R.T.: -0.038 min
 Response: 2306997
 Conc: 0.23 ng/ml



#9 Endosulfan I
 R.T.: 0.000 min
 Exp R.T. : 5.550 min
 Response: 0
 Conc: N.D.

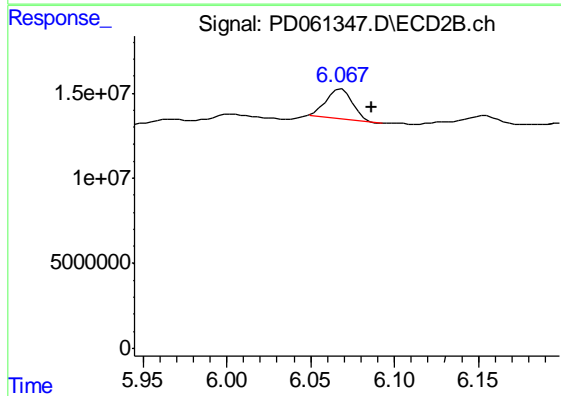


#9 Endosulfan I
 R.T.: 6.213 min
 Delta R.T.: 0.003 min
 Response: 1037207
 Conc: 0.11 ng/ml

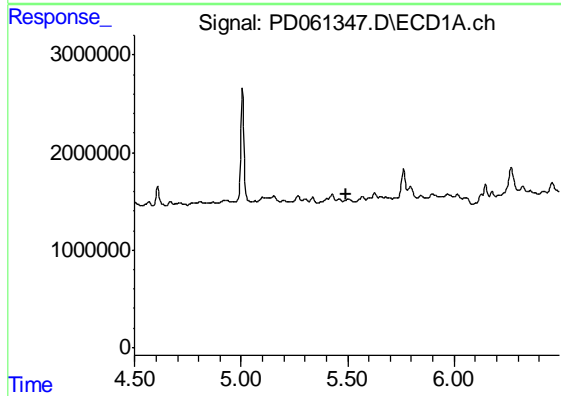


#10 trans-Chlordane
 R.T.: 0.000 min
 Exp R.T. : 5.437 min
 Response: 0
 Conc: N.D.

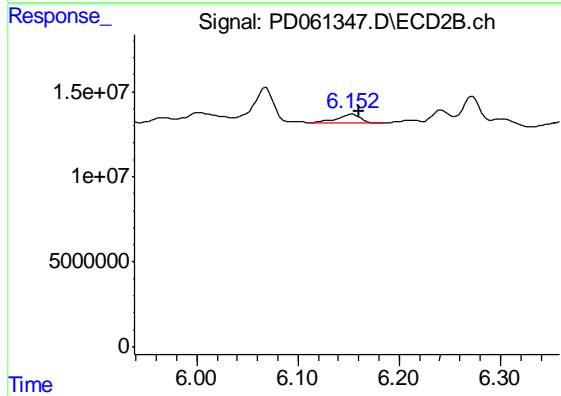
Instrument :
 ECD_D
 ClientSampleId :
 DBH15



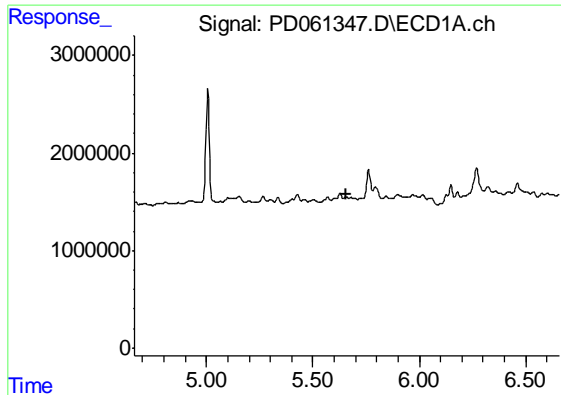
#10 trans-Chlordane
 R.T.: 6.069 min
 Delta R.T.: -0.018 min
 Response: 19543387
 Conc: 1.96 ng/ml



#11 cis-Chlordane
 R.T.: 0.000 min
 Exp R.T. : 5.496 min
 Response: 0
 Conc: N.D.



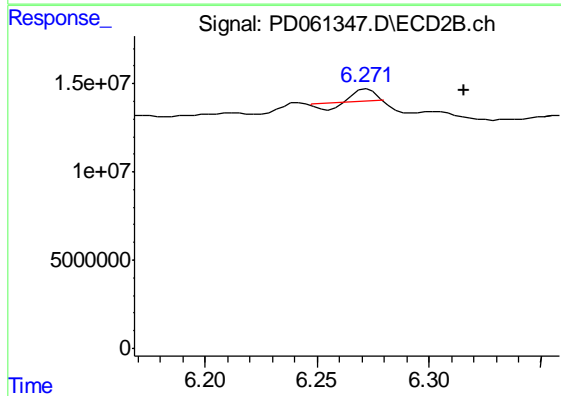
#11 cis-Chlordane
 R.T.: 6.153 min
 Delta R.T.: -0.007 min
 Response: 8049984
 Conc: 0.85 ng/ml



#12 4,4'-DDE

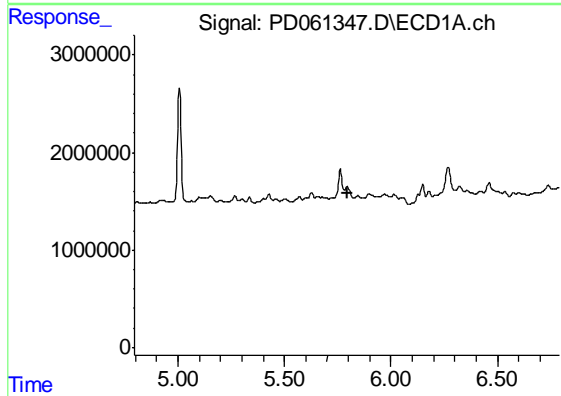
R.T.: 0.000 min
 Exp R.T. : 5.660 min
 Response: 0
 Conc: N.D.

Instrument :
 ECD_D
 ClientSampled :
 DBH15



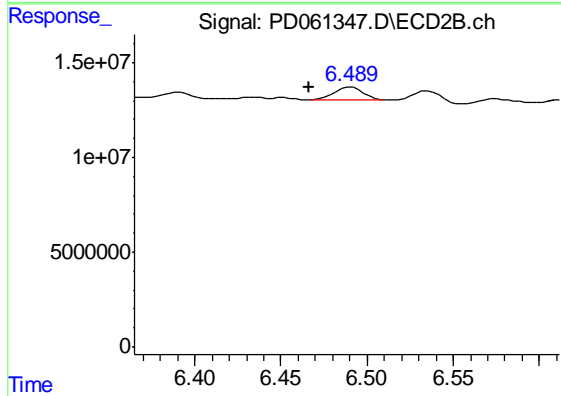
#12 4,4'-DDE

R.T.: 6.272 min
 Delta R.T.: -0.043 min
 Response: 2696327
 Conc: 0.28 ng/ml



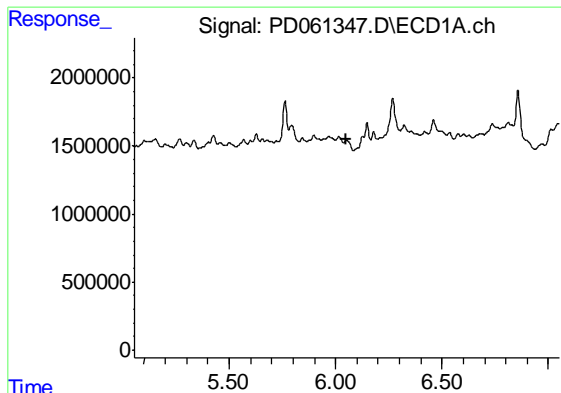
#13 Dieldrin

R.T.: 0.000 min
 Exp R.T. : 5.794 min
 Response: 0
 Conc: N.D.



#13 Dieldrin

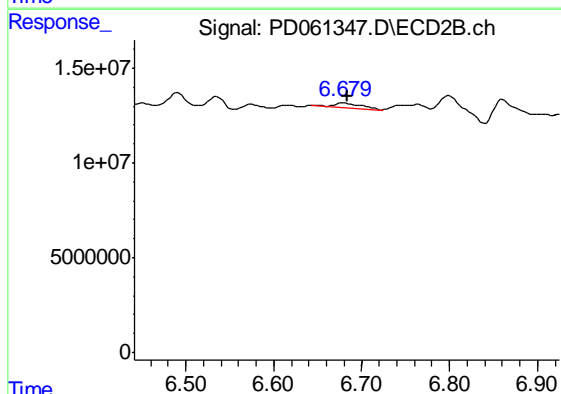
R.T.: 6.491 min
 Delta R.T.: 0.025 min
 Response: 7893877
 Conc: 0.80 ng/ml



#14 Endrin

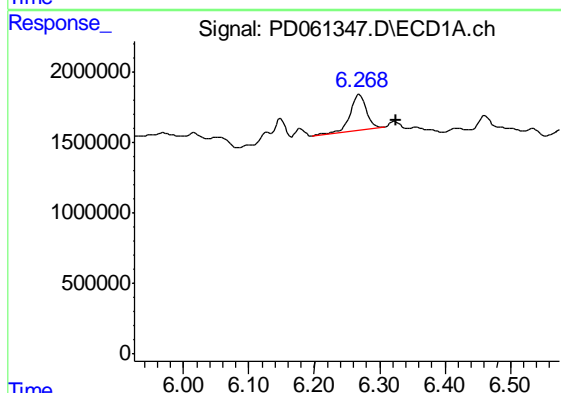
R.T.: 0.000 min
 Exp R.T. : 6.053 min
 Response: 0
 Conc: N.D.

Instrument :
 ECD_D
 ClientSampleId :
 DBH15



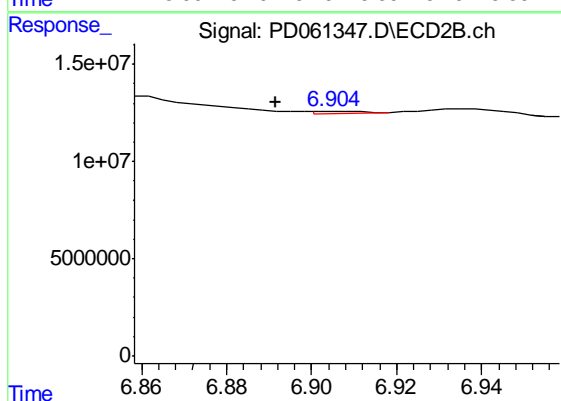
#14 Endrin

R.T.: 6.680 min
 Delta R.T.: -0.004 min
 Response: 5369324
 Conc: 0.70 ng/ml



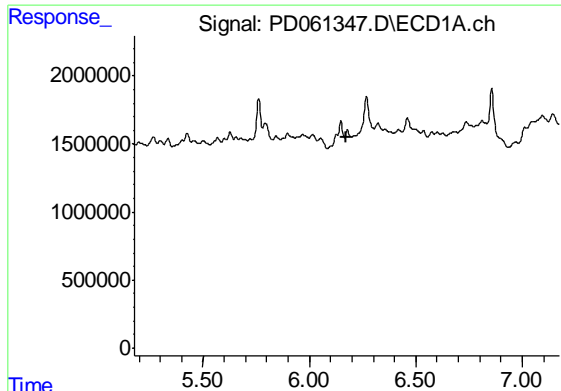
#15 Endosulfan II

R.T.: 6.269 min
 Delta R.T.: -0.057 min
 Response: 4258170
 Conc: 4.20 ng/ml



#15 Endosulfan II

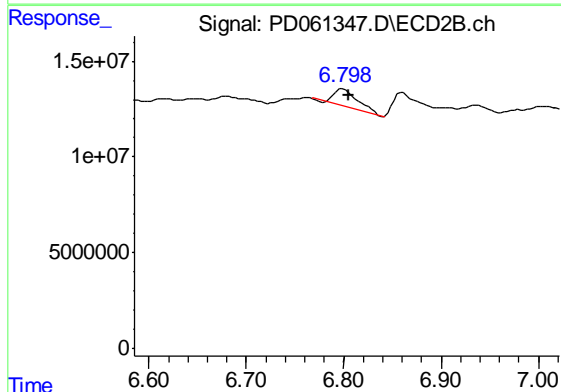
R.T.: 6.906 min
 Delta R.T.: 0.014 min
 Response: 783804
 Conc: 0.10 ng/ml



#16 4,4'-DDD

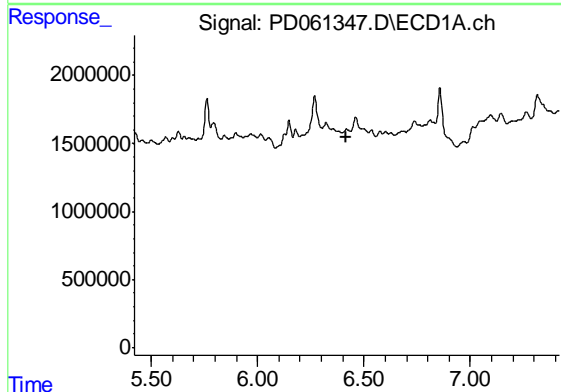
R.T.: 0.000 min
 Exp R.T. : 6.176 min
 Response: 0
 Conc: N.D.

Instrument :
 ECD_D
 ClientSampleId :
 DBH15



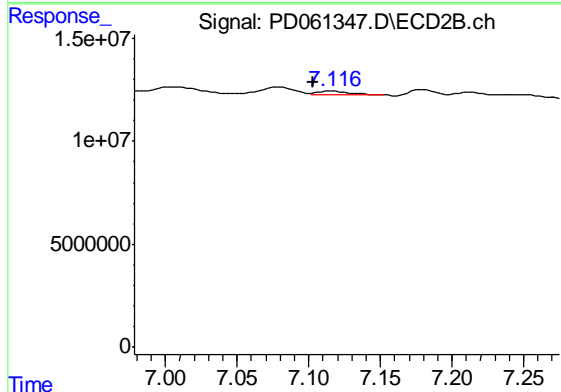
#16 4,4'-DDD

R.T.: 6.799 min
 Delta R.T.: -0.006 min
 Response: 16071652
 Conc: 2.10 ng/ml



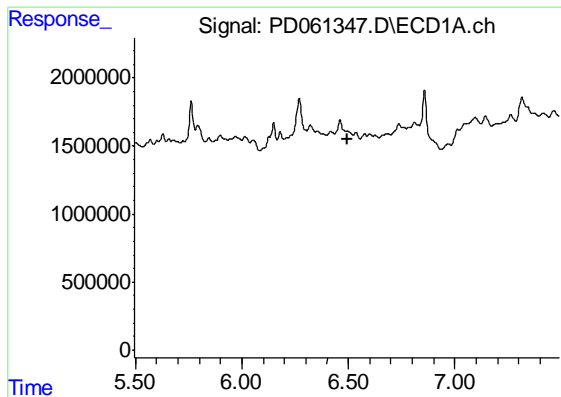
#17 4,4'-DDT

R.T.: 0.000 min
 Exp R.T. : 6.419 min
 Response: 0
 Conc: N.D.



#17 4,4'-DDT

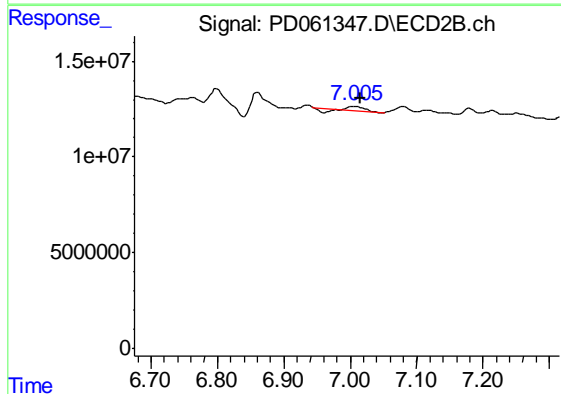
R.T.: 7.117 min
 Delta R.T.: 0.014 min
 Response: 2155053
 Conc: 0.29 ng/ml



#18 Endrin aldehyde

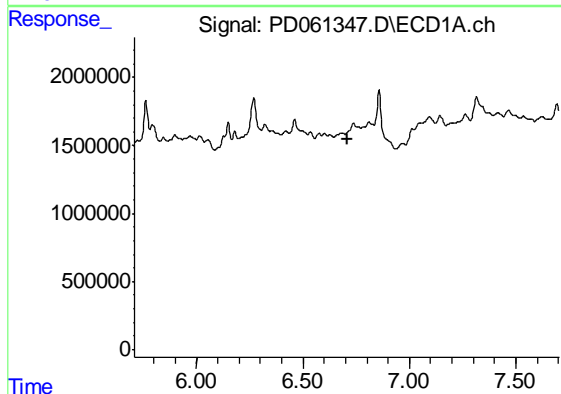
R.T.: 0.000 min
 Exp R.T. : 6.495 min
 Response: 0
 Conc: N.D.

Instrument :
 ECD_D
 ClientSampleId :
 DBH15



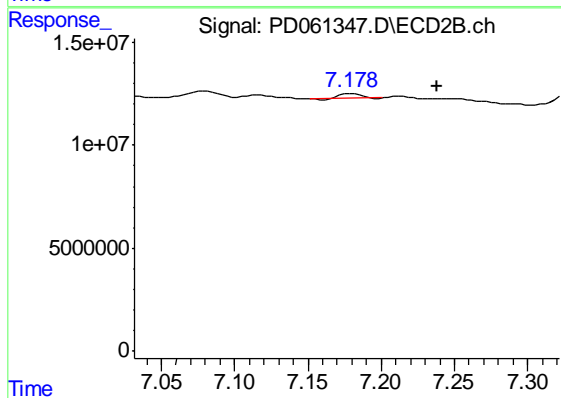
#18 Endrin aldehyde

R.T.: 7.006 min
 Delta R.T.: -0.010 min
 Response: 1138130
 Conc: 0.18 ng/ml



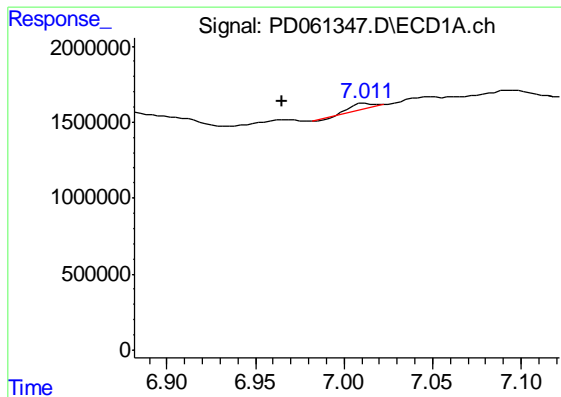
#19 Endosulfan Sulfate

R.T.: 0.000 min
 Exp R.T. : 6.708 min
 Response: 0
 Conc: N.D.



#19 Endosulfan Sulfate

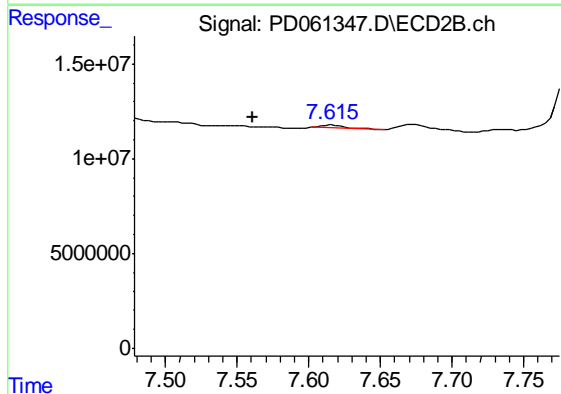
R.T.: 7.180 min
 Delta R.T.: -0.059 min
 Response: 1966593
 Conc: 0.27 ng/ml



#20 Methoxychlor

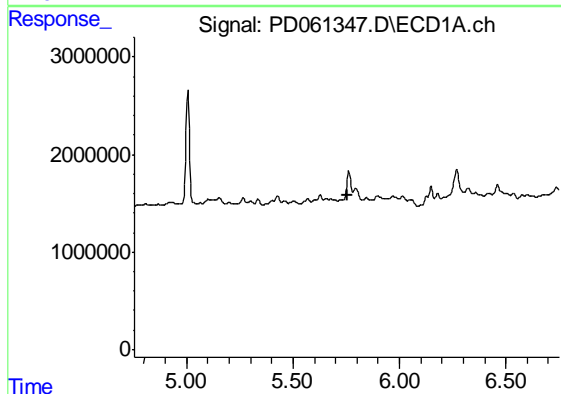
R.T.: 7.013 min
 Delta R.T.: 0.047 min
 Response: 260352
 Conc: 0.47 ng/ml

Instrument :
 ECD_D
 ClientSampled :
 DBH15



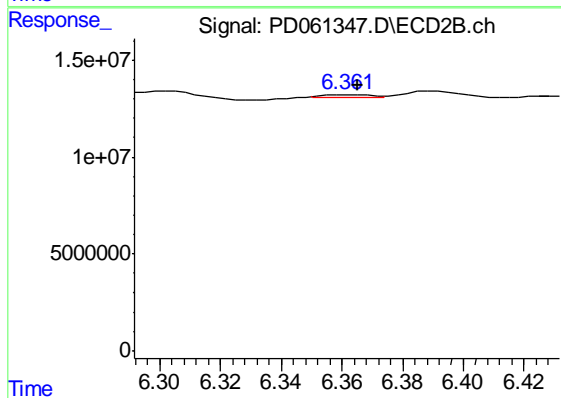
#20 Methoxychlor

R.T.: 7.616 min
 Delta R.T.: 0.055 min
 Response: 2089246
 Conc: 0.60 ng/ml



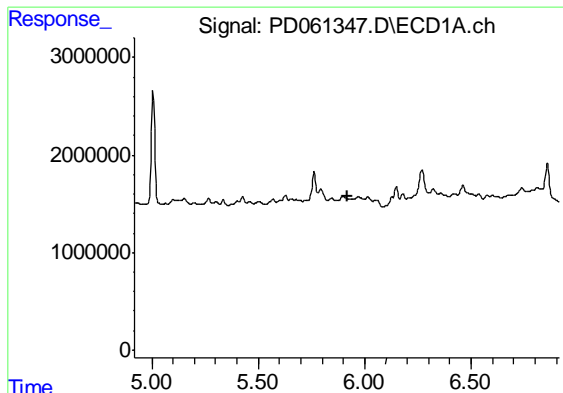
#22 Toxaphene-1

R.T.: 0.000 min
 Exp R.T. : 5.755 min
 Response: 0
 Conc: N.D.



#22 Toxaphene-1

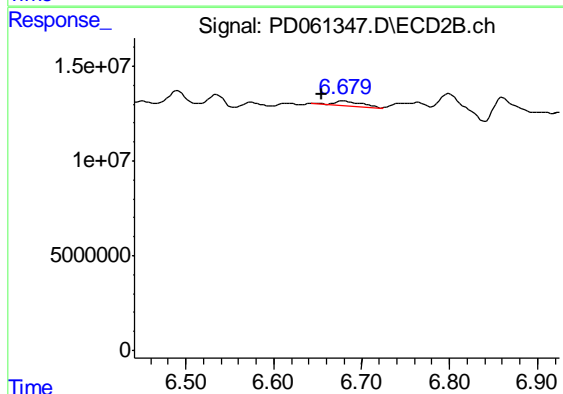
R.T.: 6.362 min
 Delta R.T.: -0.003 min
 Response: 1146639
 Conc: 20.58 ng/ml



#23 Toxaphene-2

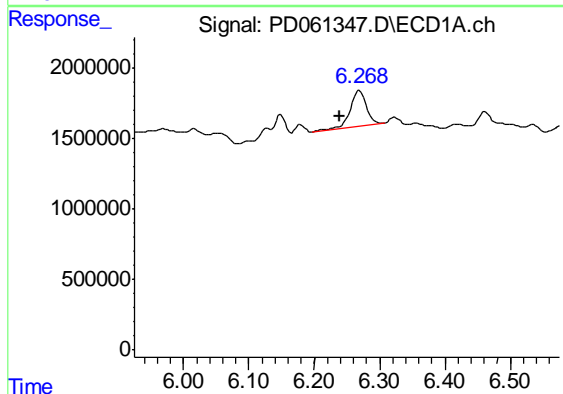
R.T.: 0.000 min
 Exp R.T. : 5.917 min
 Response: 0
 Conc: N.D.

Instrument :
 ECD_D
 ClientSampleId :
 DBH15



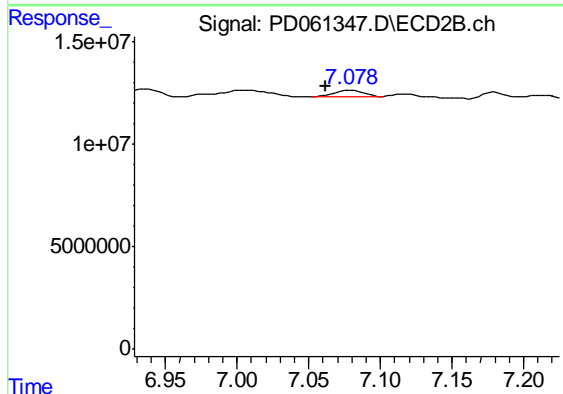
#23 Toxaphene-2

R.T.: 6.680 min
 Delta R.T.: 0.024 min
 Response: 5369324
 Conc: 77.79 ng/ml



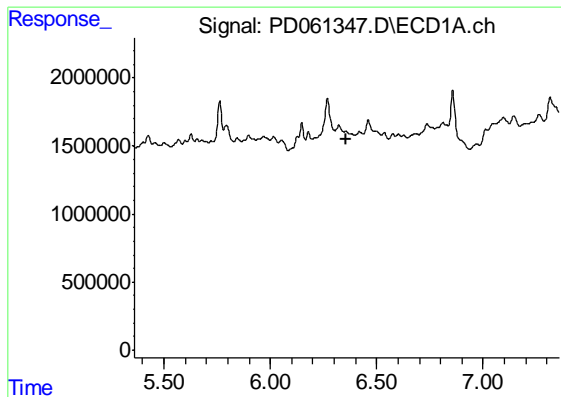
#24 Toxaphene-3

R.T.: 6.269 min
 Delta R.T.: 0.030 min
 Response: 4258170
 Conc: 388.06 ng/ml



#24 Toxaphene-3

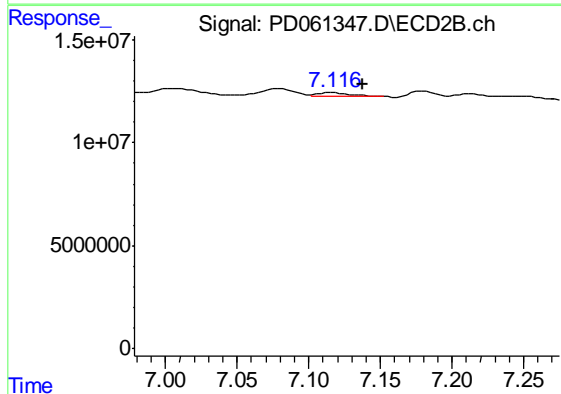
R.T.: 7.079 min
 Delta R.T.: 0.017 min
 Response: 5007699
 Conc: 52.64 ng/ml



#25 Toxaphene-4

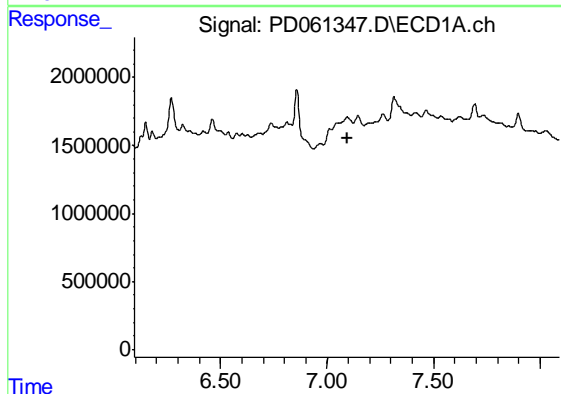
R.T.: 0.000 min
 Exp R.T. : 6.360 min
 Response: 0
 Conc: N.D.

Instrument :
 ECD_D
 ClientSampled :
 DBH15



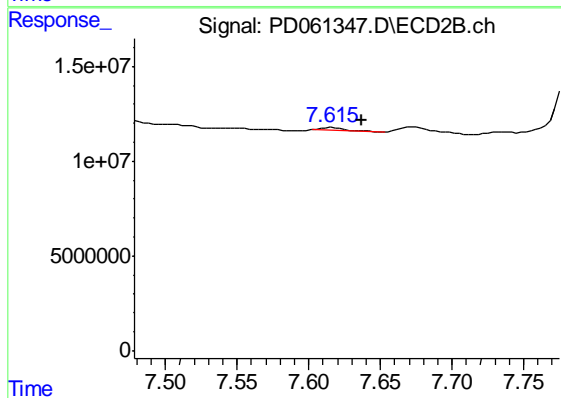
#25 Toxaphene-4

R.T.: 7.117 min
 Delta R.T.: -0.021 min
 Response: 2155053
 Conc: 8.39 ng/ml



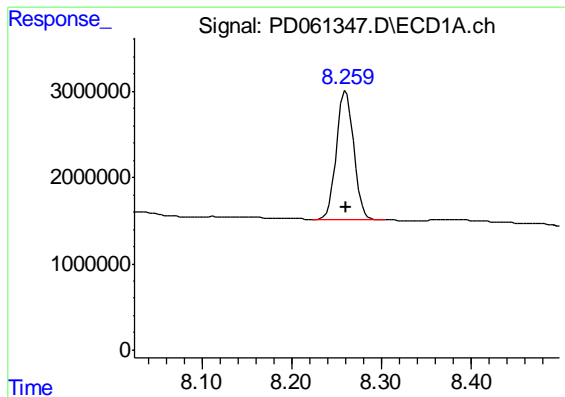
#26 Toxaphene-5

R.T.: 0.000 min
 Exp R.T. : 7.094 min
 Response: 0
 Conc: N.D.



#26 Toxaphene-5

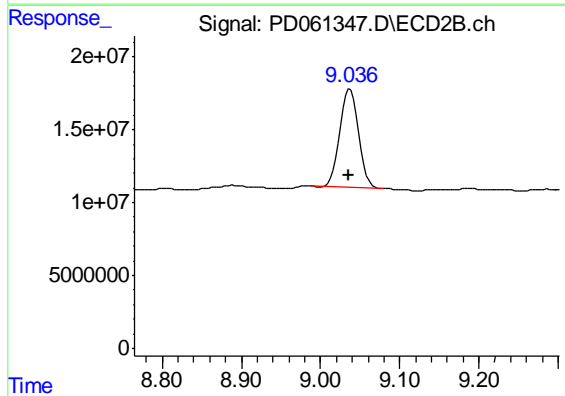
R.T.: 7.616 min
 Delta R.T.: -0.021 min
 Response: 2089246
 Conc: 19.30 ng/ml



#27 Decachlorobiphenyl

R.T.: 8.261 min
Delta R.T.: 0.000 min
Response: 20032005
Conc: 16.28 ng/ml

Instrument :
ECD_D
ClientSampleId :
DBH15



#27 Decachlorobiphenyl

R.T.: 9.037 min
Delta R.T.: 0.001 min
Response: 113768114
Conc: 15.83 ng/ml