

Data Path : Z:\pestpcbsrv\HPCHEM1\ECD_D\Data\PD022121\
 Data File : PD061348.D
 Signal(s) : Signal #1: ECD1A.ch Signal #2: ECD2B.ch
 Acq On : 21 Feb 2021 18:32
 Operator : DD\AJ
 Sample : M1379-19
 Misc :
 ALS Vial : 28 Sample Multiplier: 1

Instrument :
 ECD_D
 ClientSampleId :
 DBH16

Integration File signal 1: autoint1.e
 Integration File signal 2: autoint2.e
 Quant Time: Feb 22 04:57:13 2021
 Quant Method : Z:\pestpcbsrv\HPCHEM1\ECD_D\Method\PD022121CLP.M
 Quant Title : GC Extractables
 QLast Update : Mon Feb 22 04:35:05 2021
 Response via : Initial Calibration
 Integrator: ChemStation

Volume Inj. : 1 µl
 Signal #1 Phase : ZB-MR2 Signal #2 Phase: ZB-MR1
 Signal #1 Info : 30M x 0.32mm x0.2 Signal #2 Info : 30M x 0.32mm x 0.50µm

Compound	RT#1	RT#2	Resp#1	Resp#2	ng/ml	ng/ml

System Monitoring Compounds						
1) SA Tetrachlo...	3.487	3.982	16456429	149.6E6	17.871	17.887
27) SA Decachlor...	8.261	9.038	41974478	247.1E6	34.116	34.386
Target Compounds						
2) A alpha-BHC	3.882f	4.404f	755777	8076525	0.572	0.629
3) MA gamma-BHC...	0.000	4.652	0	806817	N.D.	<MDL
5) MB Aldrin	0.000	5.505f	0	2260331	N.D.	0.207
6) B beta-BHC	0.000	4.808	0	4876282	N.D.	0.993
7) B delta-BHC	0.000	5.033	0	13852101	N.D.	1.187
8) B Heptachlo...	0.000	5.860	0	6978499	N.D.	0.703
9) A Endosulfan I	0.000	6.159f	0	490378	N.D.	<MDL
11) B cis-Chlor...	0.000	6.159	0	490378	N.D.	<MDL
13) MA Dieldrin	0.000	6.436	0	2674886	N.D.	0.272
14) MA Endrin	0.000	6.619f	0	70880	N.D.	<MDL
15) B Endosulfa...	6.269f	6.902	6104801	5303556	6.022	0.691 #
16) A 4,4'-DDD	0.000	6.861f	0	16231456	N.D.	2.118
17) MA 4,4'-DDT	0.000	7.077	0	1137469	N.D.	0.153
18) B Endrin al...	0.000	7.005	0	1614794	N.D.	0.259
19) B Endosulfa...	6.640f	7.237	1079794	2603462	1.038	0.356 #
21) B Endrin ke...	0.000	7.703	0	10458500	N.D.	1.447
23) Toxaphene-2	0.000	6.619	0	70880	N.D.	1.027
24) Toxaphene-3	6.269	7.077	6104801	1137469	556.353	11.957 #
25) Toxaphene-4	0.000	7.077	0	1137469	N.D.	4.428
26) Toxaphene-5	7.070	7.703	1355958	10458500	45.880	96.638 #

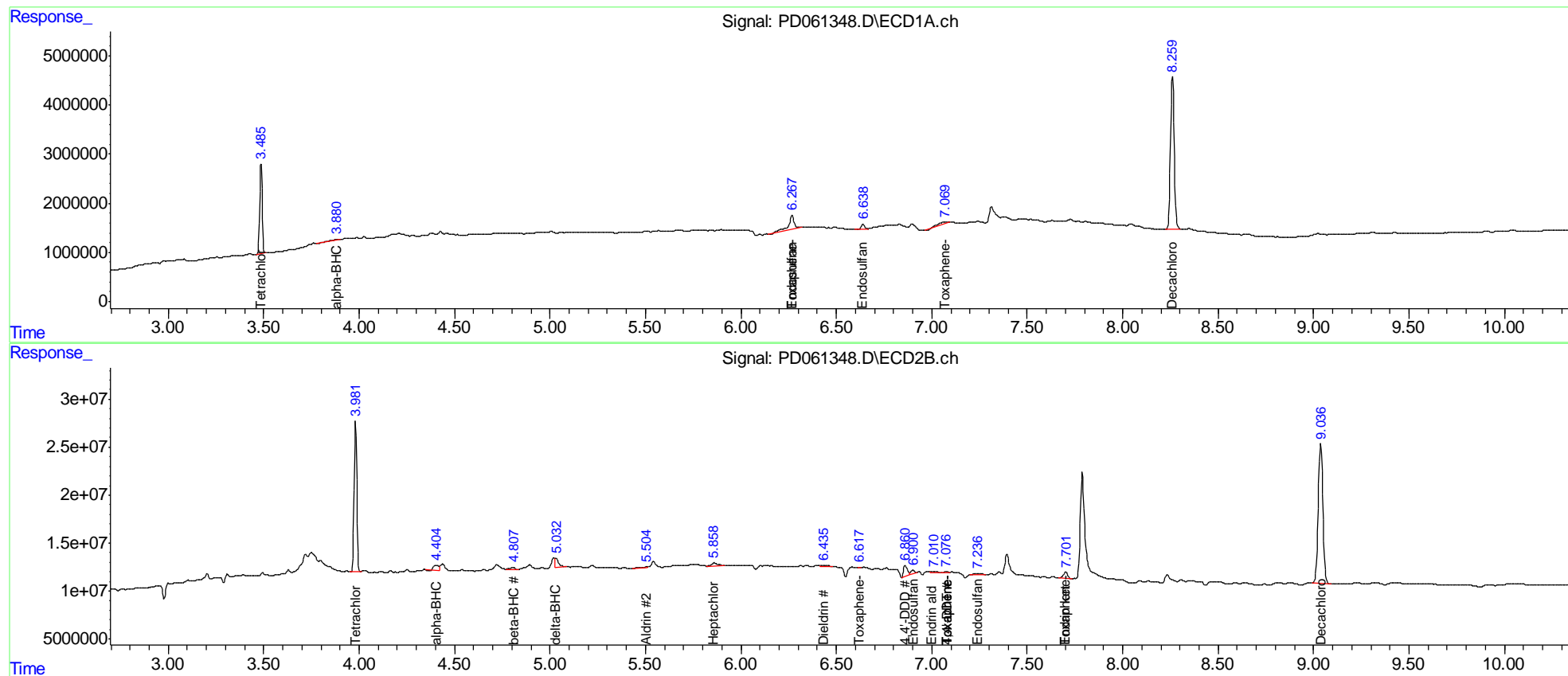
(f)=RT Delta > 1/2 Window (#)=Amounts differ by > 25% (m)=manual int.

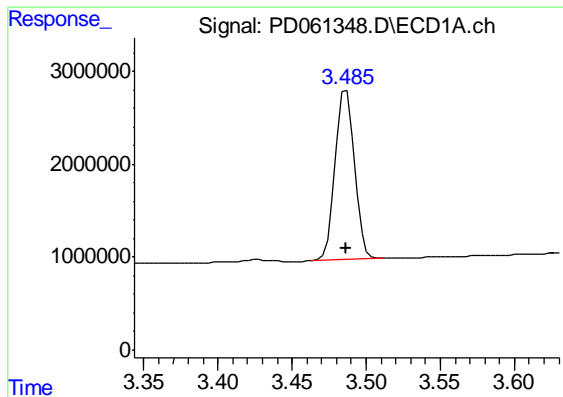
Data Path : Z:\pestpcbsrv\HPCHEM1\ECD_D\Data\PD022121\
 Data File : PD061348.D
 Signal(s) : Signal #1: ECD1A.ch Signal #2: ECD2B.ch
 Acq On : 21 Feb 2021 18:32
 Operator : DD\AJ
 Sample : M1379-19
 Misc :
 ALS Vial : 28 Sample Multiplier: 1

Instrument :
 ECD_D
 ClientSampleId :
 DBH16

Integration File signal 1: autoint1.e
 Integration File signal 2: autoint2.e
 Quant Time: Feb 22 04:57:13 2021
 Quant Method : Z:\pestpcbsrv\HPCHEM1\ECD_D\Method\PD022121CLP.M
 Quant Title : GC Extractables
 QLast Update : Mon Feb 22 04:35:05 2021
 Response via : Initial Calibration
 Integrator: ChemStation

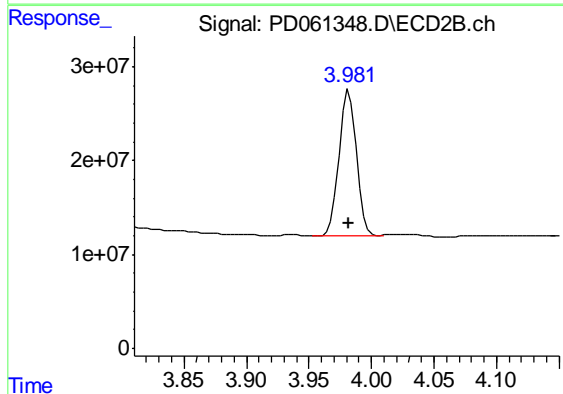
Volume Inj. : 1 µl
 Signal #1 Phase : ZB-MR2 Signal #2 Phase: ZB-MR1
 Signal #1 Info : 30M x 0.32mm x0.2 Signal #2 Info : 30M x 0.32mm x 0.50µm



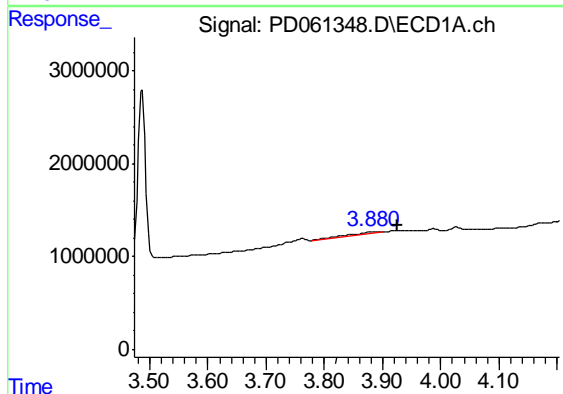


#1 Tetrachloro-m-xylene
 R.T.: 3.487 min
 Delta R.T.: 0.000 min
 Response: 16456429
 Conc: 17.87 ng/ml

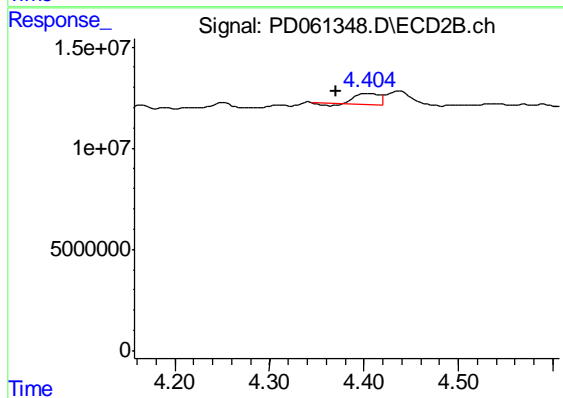
Instrument :
 ECD_D
 ClientSampleId :
 DBH16



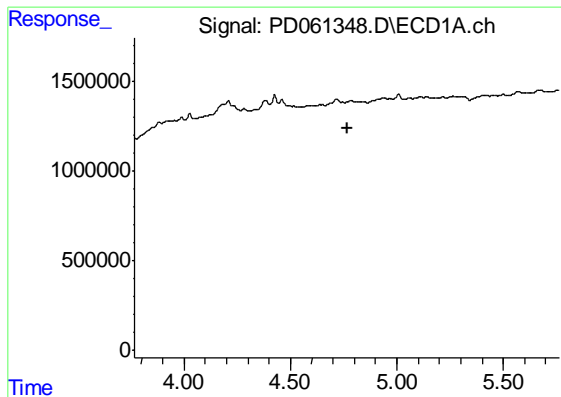
#1 Tetrachloro-m-xylene
 R.T.: 3.982 min
 Delta R.T.: 0.000 min
 Response: 149570923
 Conc: 17.89 ng/ml



#2 alpha-BHC
 R.T.: 3.882 min
 Delta R.T.: -0.044 min
 Response: 755777
 Conc: 0.57 ng/ml

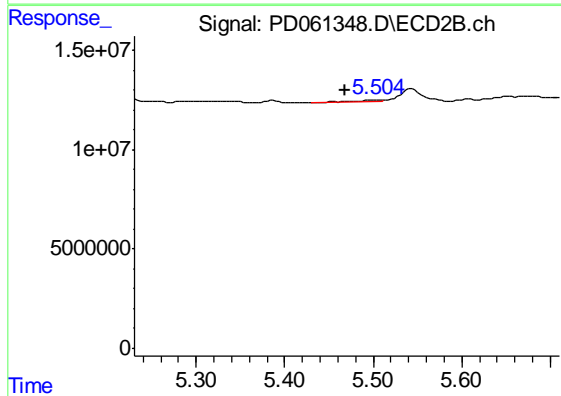


#2 alpha-BHC
 R.T.: 4.404 min
 Delta R.T.: 0.034 min
 Response: 8076525
 Conc: 0.63 ng/ml

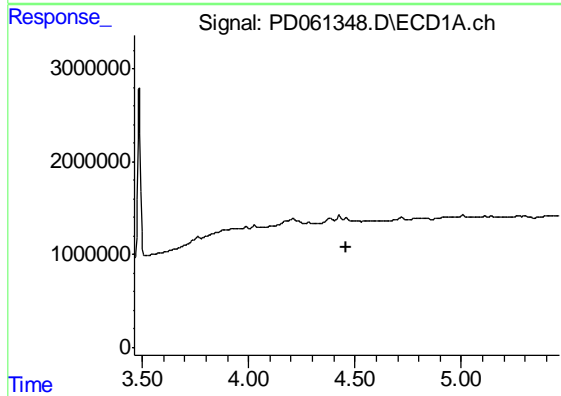


#5 Aldrin
 R.T.: 0.000 min
 Exp R.T. : 4.765 min
 Response: 0
 Conc: N.D.

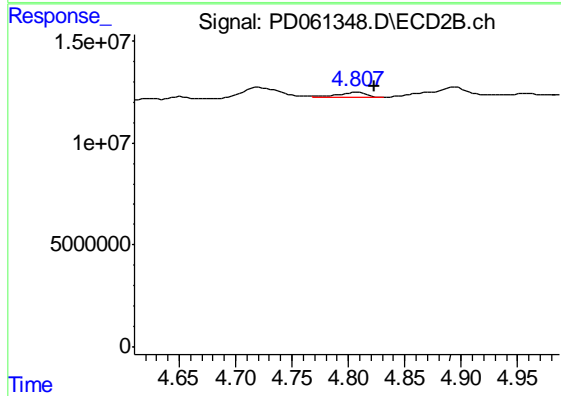
Instrument :
 ECD_D
 ClientSampleId :
 DBH16



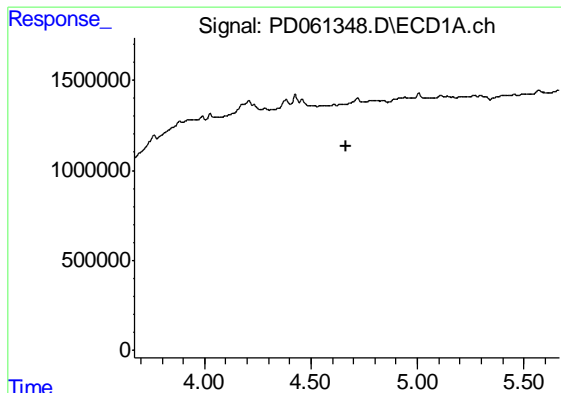
#5 Aldrin
 R.T.: 5.505 min
 Delta R.T.: 0.038 min
 Response: 2260331
 Conc: 0.21 ng/ml



#6 beta-BHC
 R.T.: 0.000 min
 Exp R.T. : 4.461 min
 Response: 0
 Conc: N.D.

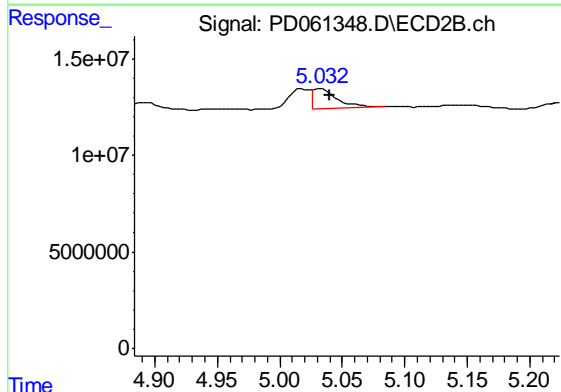


#6 beta-BHC
 R.T.: 4.808 min
 Delta R.T.: -0.015 min
 Response: 4876282
 Conc: 0.99 ng/ml

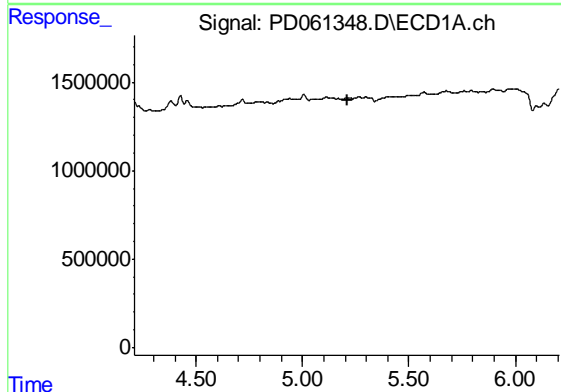


#7 delta-BHC
 R.T.: 0.000 min
 Exp R.T. : 4.668 min
 Response: 0
 Conc: N.D.

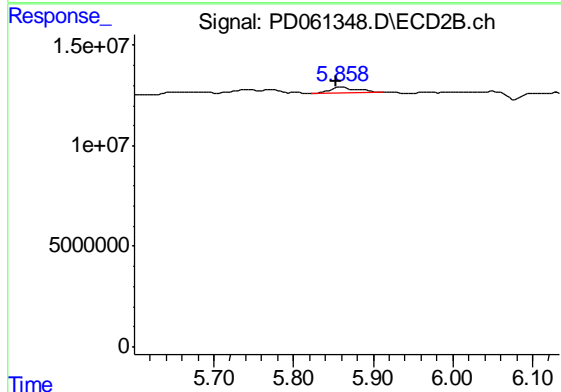
Instrument :
 ECD_D
 ClientSampleId :
 DBH16



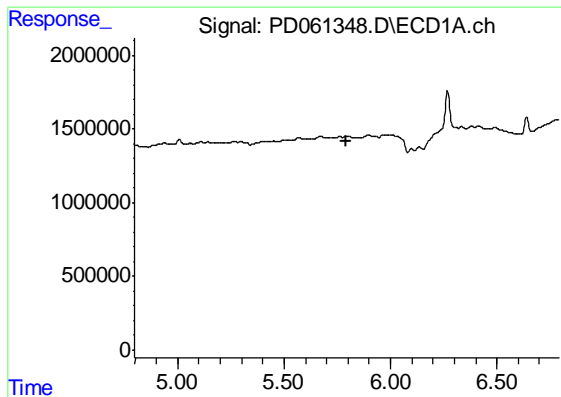
#7 delta-BHC
 R.T.: 5.033 min
 Delta R.T.: -0.007 min
 Response: 13852101
 Conc: 1.19 ng/ml



#8 Heptachlor epoxide
 R.T.: 0.000 min
 Exp R.T. : 5.209 min
 Response: 0
 Conc: N.D.



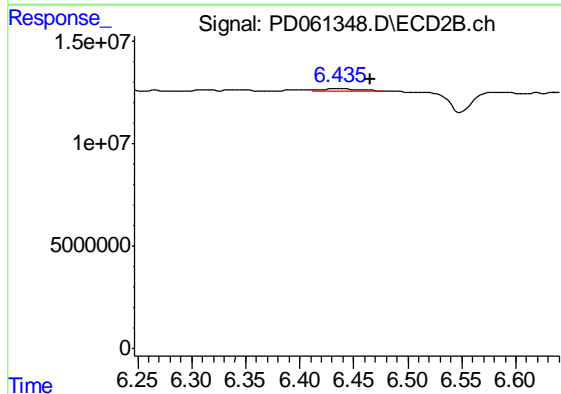
#8 Heptachlor epoxide
 R.T.: 5.860 min
 Delta R.T.: 0.006 min
 Response: 6978499
 Conc: 0.70 ng/ml



#13 Dieldrin

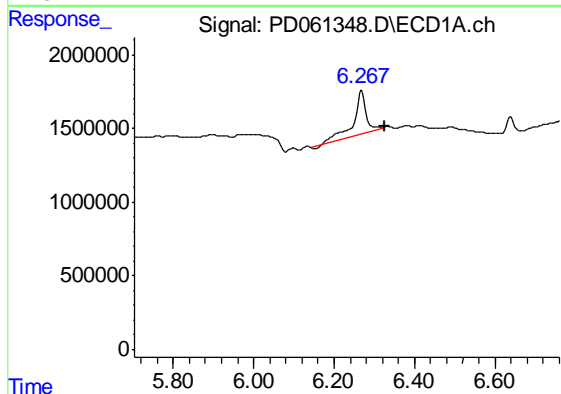
R.T.: 0.000 min
 Exp R.T. : 5.794 min
 Response: 0
 Conc: N.D.

Instrument :
 ECD_D
 ClientSampleId :
 DBH16



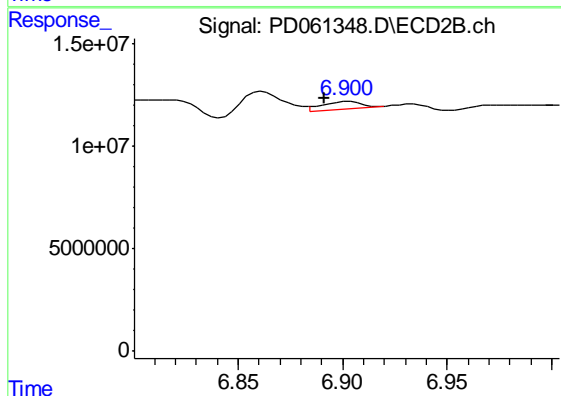
#13 Dieldrin

R.T.: 6.436 min
 Delta R.T.: -0.030 min
 Response: 2674886
 Conc: 0.27 ng/ml



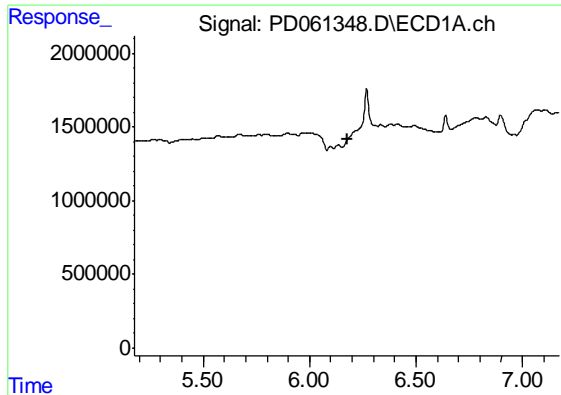
#15 Endosulfan II

R.T.: 6.269 min
 Delta R.T.: -0.057 min
 Response: 6104801
 Conc: 6.02 ng/ml



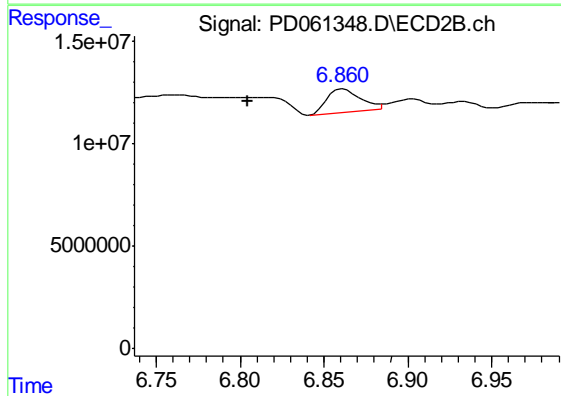
#15 Endosulfan II

R.T.: 6.902 min
 Delta R.T.: 0.011 min
 Response: 5303556
 Conc: 0.69 ng/ml

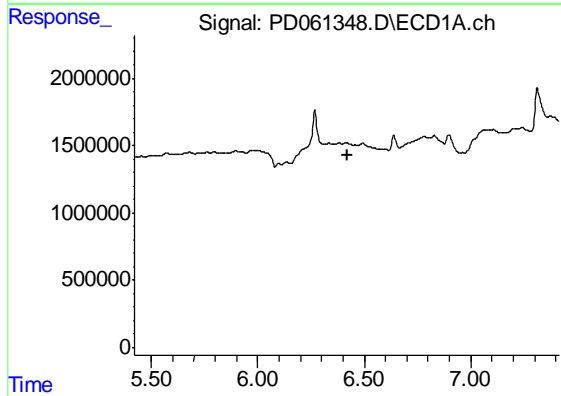


#16 4,4'-DDD
 R.T.: 0.000 min
 Exp R.T. : 6.176 min
 Response: 0
 Conc: N.D.

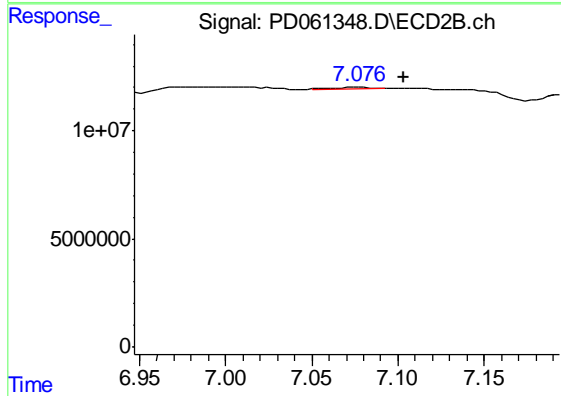
Instrument :
 ECD_D
 ClientSampleId :
 DBH16



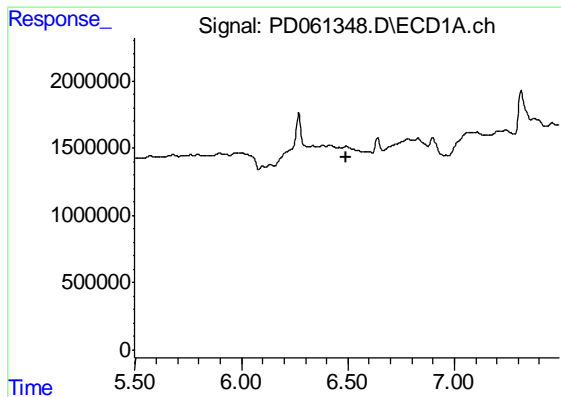
#16 4,4'-DDD
 R.T.: 6.861 min
 Delta R.T.: 0.056 min
 Response: 16231456
 Conc: 2.12 ng/ml



#17 4,4'-DDT
 R.T.: 0.000 min
 Exp R.T. : 6.419 min
 Response: 0
 Conc: N.D.

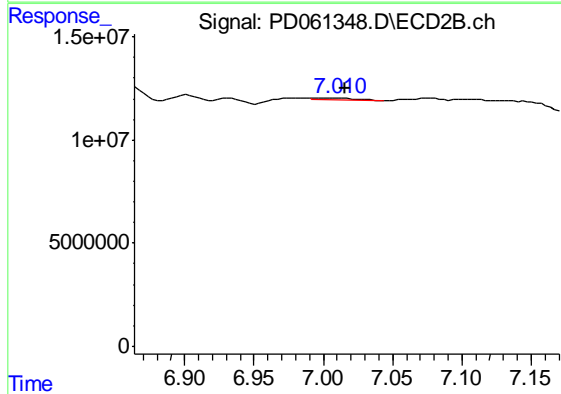


#17 4,4'-DDT
 R.T.: 7.077 min
 Delta R.T.: -0.026 min
 Response: 1137469
 Conc: 0.15 ng/ml

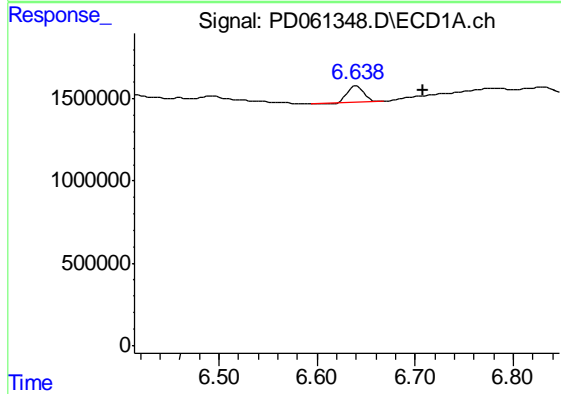


#18 Endrin aldehyde
 R.T.: 0.000 min
 Exp R.T. : 6.495 min
 Response: 0
 Conc: N.D.

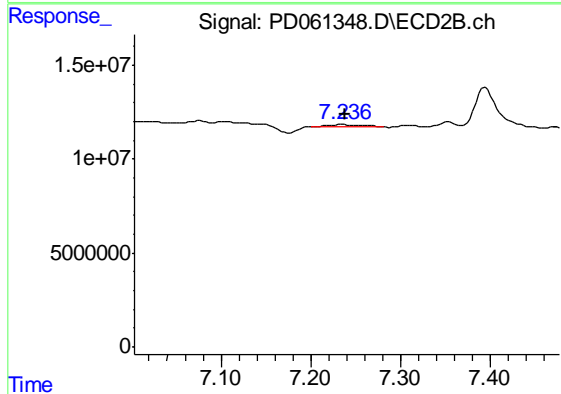
Instrument :
 ECD_D
 ClientSampleId :
 DBH16



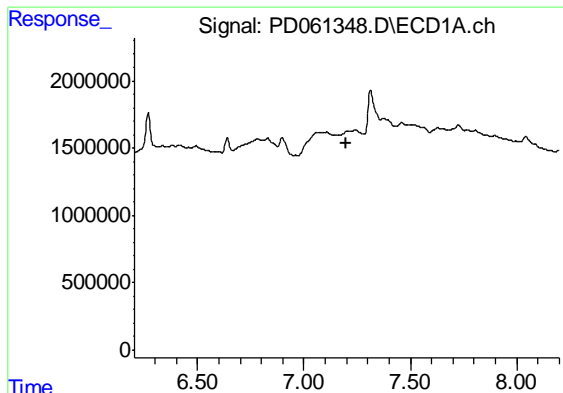
#18 Endrin aldehyde
 R.T.: 7.005 min
 Delta R.T.: -0.011 min
 Response: 1614794
 Conc: 0.26 ng/ml



#19 Endosulfan Sulfate
 R.T.: 6.640 min
 Delta R.T.: -0.068 min
 Response: 1079794
 Conc: 1.04 ng/ml



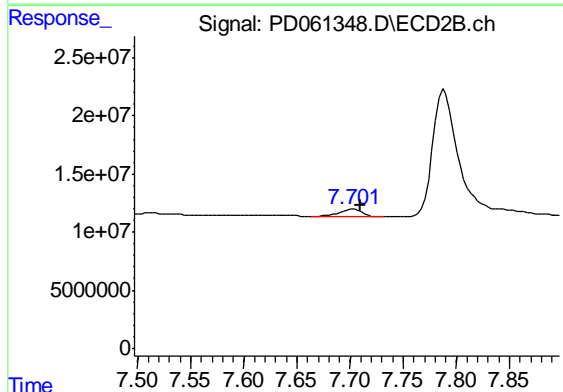
#19 Endosulfan Sulfate
 R.T.: 7.237 min
 Delta R.T.: -0.002 min
 Response: 2603462
 Conc: 0.36 ng/ml



#21 Endrin ketone

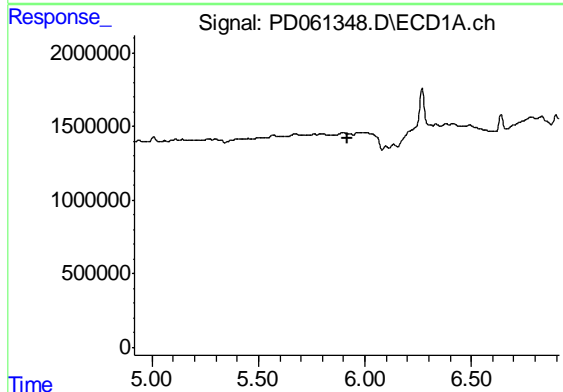
R.T.: 0.000 min
 Exp R.T. : 7.202 min
 Response: 0
 Conc: N.D.

Instrument :
 ECD_D
 ClientSampled :
 DBH16



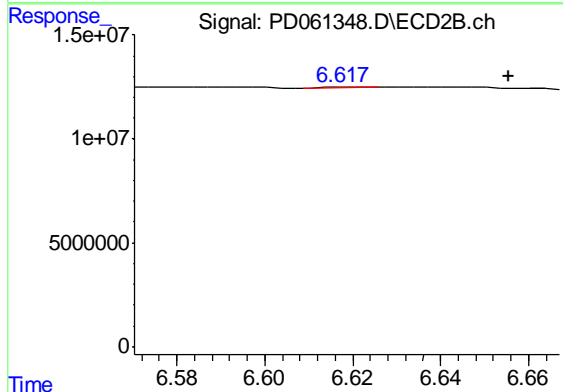
#21 Endrin ketone

R.T.: 7.703 min
 Delta R.T.: -0.006 min
 Response: 10458500
 Conc: 1.45 ng/ml



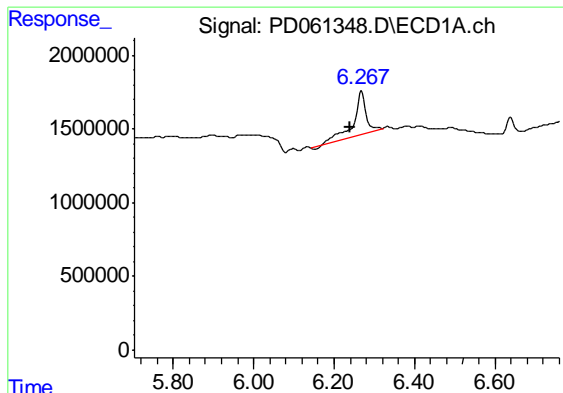
#23 Toxaphene-2

R.T.: 0.000 min
 Exp R.T. : 5.917 min
 Response: 0
 Conc: N.D.



#23 Toxaphene-2

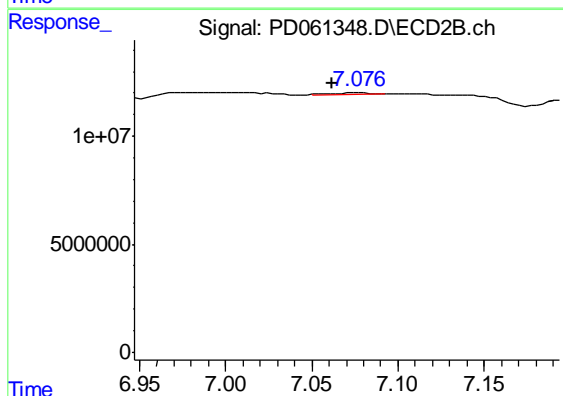
R.T.: 6.619 min
 Delta R.T.: -0.036 min
 Response: 70880
 Conc: 1.03 ng/ml



#24 Toxaphene-3

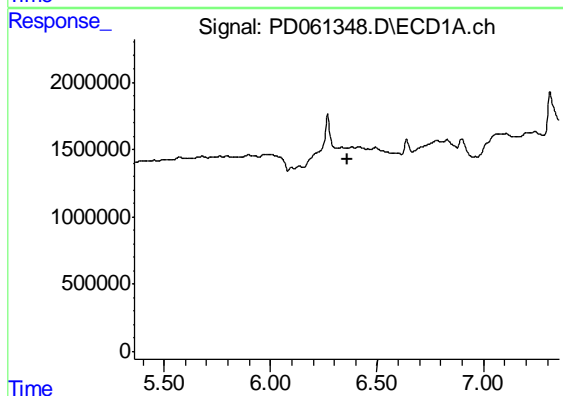
R.T.: 6.269 min
 Delta R.T.: 0.029 min
 Response: 6104801
 Conc: 556.35 ng/ml

Instrument :
 ECD_D
 ClientSampleId :
 DBH16



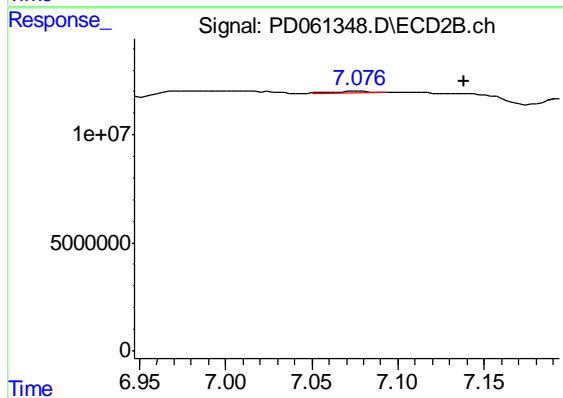
#24 Toxaphene-3

R.T.: 7.077 min
 Delta R.T.: 0.015 min
 Response: 1137469
 Conc: 11.96 ng/ml



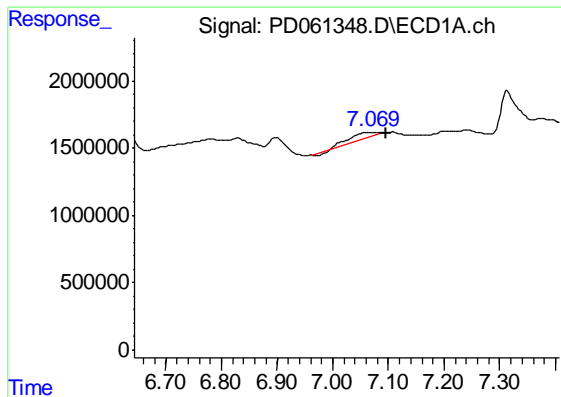
#25 Toxaphene-4

R.T.: 0.000 min
 Exp R.T. : 6.360 min
 Response: 0
 Conc: N.D.



#25 Toxaphene-4

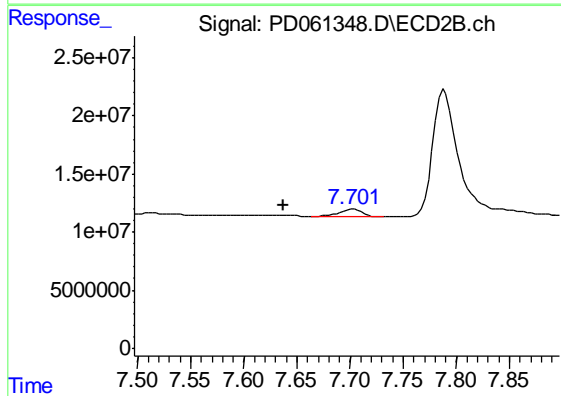
R.T.: 7.077 min
 Delta R.T.: -0.061 min
 Response: 1137469
 Conc: 4.43 ng/ml



#26 Toxaphene-5

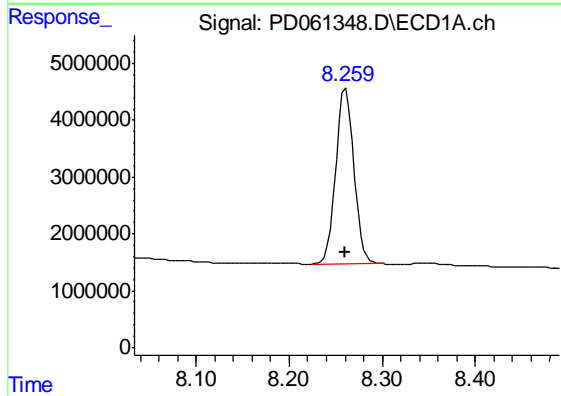
R.T.: 7.070 min
 Delta R.T.: -0.025 min
 Response: 1355958
 Conc: 45.88 ng/ml

Instrument :
 ECD_D
 ClientSampleId :
 DBH16



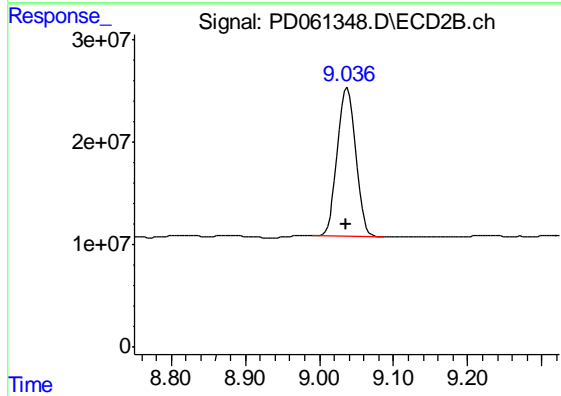
#26 Toxaphene-5

R.T.: 7.703 min
 Delta R.T.: 0.066 min
 Response: 10458500
 Conc: 96.64 ng/ml



#27 Decachlorobiphenyl

R.T.: 8.261 min
 Delta R.T.: 0.000 min
 Response: 41974478
 Conc: 34.12 ng/ml



#27 Decachlorobiphenyl

R.T.: 9.038 min
 Delta R.T.: 0.001 min
 Response: 247141590
 Conc: 34.39 ng/ml