

Data Path : Z:\pestpcbsrv\HPCHEM1\ECD_D\Data\PD022121\
 Data File : PD061366.D
 Signal(s) : Signal #1: ECD1A.ch Signal #2: ECD2B.ch
 Acq On : 21 Feb 2021 23:27
 Operator : DD\AJ
 Sample : M1412-24
 Misc :
 ALS Vial : 43 Sample Multiplier: 1

Instrument :
 ECD_D
 ClientSampleId :
 DBGZ9

Integration File signal 1: autoint1.e
 Integration File signal 2: autoint2.e
 Quant Time: Feb 22 05:05:20 2021
 Quant Method : Z:\pestpcbsrv\HPCHEM1\ECD_D\Method\PD022121CLP.M
 Quant Title : GC Extractables
 QLast Update : Mon Feb 22 04:35:05 2021
 Response via : Initial Calibration
 Integrator: ChemStation

Volume Inj. : 1 µl
 Signal #1 Phase : ZB-MR2 Signal #2 Phase: ZB-MR1
 Signal #1 Info : 30M x 0.32mm x0.2 Signal #2 Info : 30M x 0.32mm x 0.50µm

Compound	RT#1	RT#2	Resp#1	Resp#2	ng/ml	ng/ml

System Monitoring Compounds						
1) SA Tetrachlo...	3.474	3.983	20801793	89952330	22.590	10.758 #
27) SA Decachlor...	8.255	9.037	5350.5E6	30078406	4348.848	4.185 #
Target Compounds						
3) MA gamma-BHC...	0.000	4.648	0	33507567	N.D.	2.868
5) MB Aldrin	0.000	5.453	0	22227776	N.D.	2.038
6) B beta-BHC	4.423f	4.811	664361	23574552	1.075	4.799 #
7) B delta-BHC	4.704f	5.045	-250995	13393030	N.D.	1.148
8) B Heptachlo...	5.165f	5.843	972742	72237681	0.813	7.278 #
9) A Endosulfan I	5.556	6.215	3331200	47667525	2.824	5.161 #
10) B trans-Chl...	5.445	6.093	2430615	7316527	1.948	0.733 #
11) B cis-Chlor...	5.519	6.129	2818727	28499072	2.321	2.997 #
12) B 4,4'-DDE	5.651	6.368f	3283138	15325404	2.826	1.607 #
13) MA Dieldrin	5.745f	6.467	550934	52215298	0.431	5.313 #
14) MA Endrin	0.000	6.670	0	48334239	N.D.	6.261
15) B Endosulfa...	6.343	6.861	2607021	49103413	2.572	6.394 #
16) A 4,4'-DDD	6.185	6.808	3448684	76740821	3.397	10.015 #
17) MA 4,4'-DDT	6.450	7.106	274191	21790032	0.273	2.923 #
18) B Endrin al...	6.532f	7.012	1839823	21654658	2.049	3.468 #
19) B Endosulfa...	6.723	7.233	3760414	83419492	3.615	11.421 #
20) A Methoxychlor	0.000	7.589	0	63536083	N.D.	18.182
21) B Endrin ke...	7.189	7.675	38060140	1930.0E6	31.845	267.121 #
22) Toxaphene-1	5.745	6.368	550934	15325404	52.058	275.089 #
23) Toxaphene-2	5.898	6.670	19963257	48334239	1875.184	700.257 #
24) Toxaphene-3	6.245	7.065	2588270	25572883	235.879	268.830
25) Toxaphene-4	6.343	7.167	2607021	609.6E6	96.414	2373.210 #
26) Toxaphene-5	7.072	7.675	947454	1930.0E6	32.058	17833.826 #

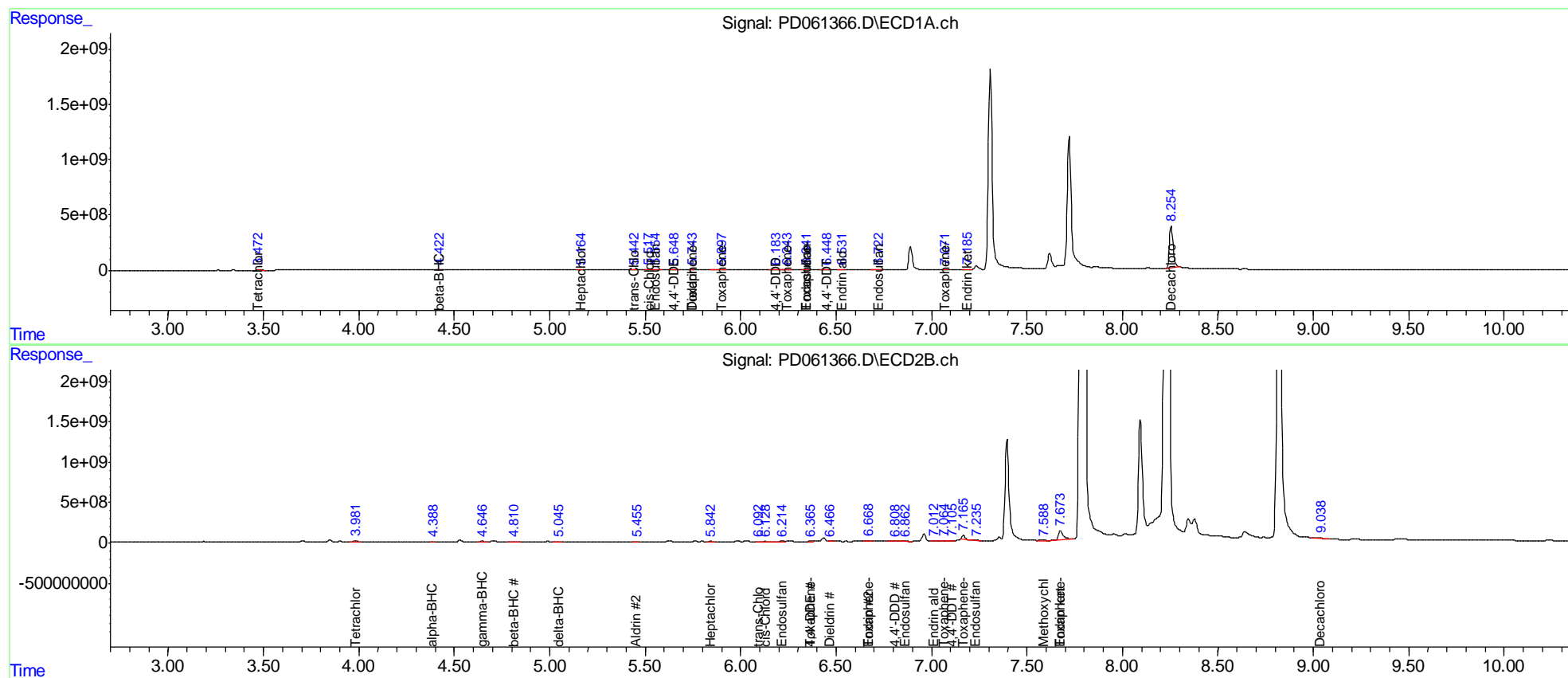
(f)=RT Delta > 1/2 Window (#)=Amounts differ by > 25% (m)=manual int.

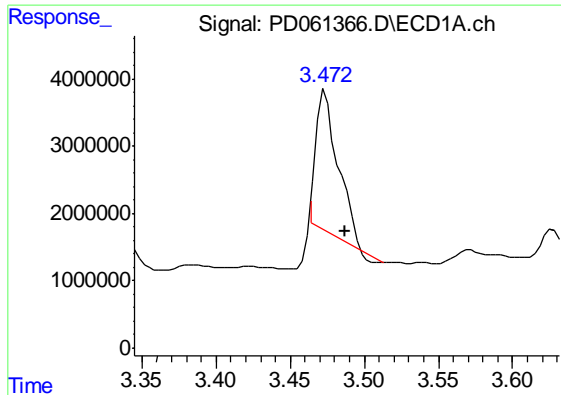
Data Path : Z:\pestpcbsrv\HPCHEM1\ECD_D\Data\PD022121\
 Data File : PD061366.D
 Signal(s) : Signal #1: ECD1A.ch Signal #2: ECD2B.ch
 Acq On : 21 Feb 2021 23:27
 Operator : DD\AJ
 Sample : M1412-24
 Misc :
 ALS Vial : 43 Sample Multiplier: 1

Instrument :
 ECD_D
 Client Sample Id :
 DBGZ9

Integration File signal 1: autoint1.e
 Integration File signal 2: autoint2.e
 Quant Time: Feb 22 05:05:20 2021
 Quant Method : Z:\pestpcbsrv\HPCHEM1\ECD_D\Method\PD022121CLP.M
 Quant Title : GC Extractables
 QLast Update : Mon Feb 22 04:35:05 2021
 Response via : Initial Calibration
 Integrator: ChemStation

Volume Inj. : 1 µl
 Signal #1 Phase : ZB-MR2 Signal #2 Phase: ZB-MR1
 Signal #1 Info : 30M x 0.32mm x0.2 Signal #2 Info : 30M x 0.32mm x 0.50µm

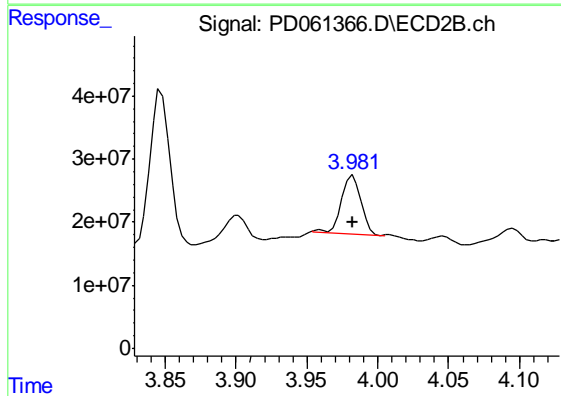




#1 Tetrachloro-m-xylene

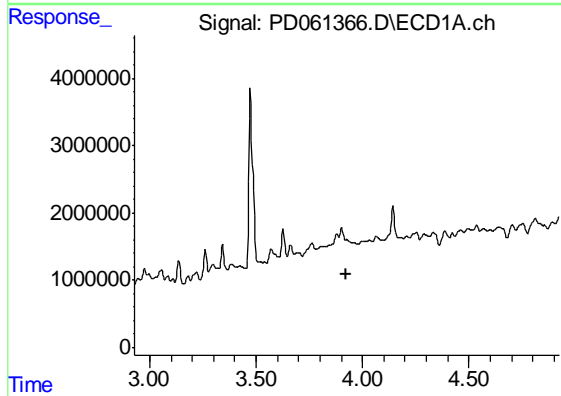
R.T.: 3.474 min
 Delta R.T.: -0.013 min
 Response: 20801793
 Conc: 22.59 ng/ml

Instrument :
 ECD_D
 ClientSampleId :
 DBGZ9



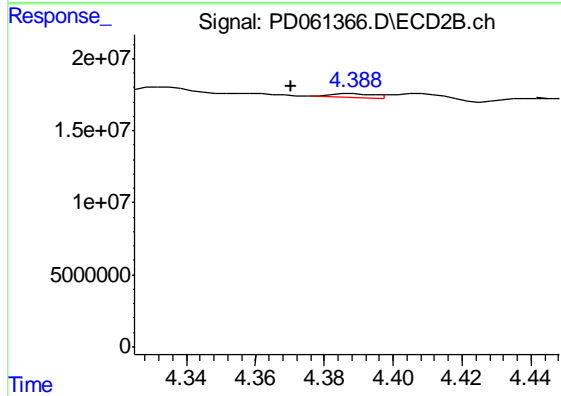
#1 Tetrachloro-m-xylene

R.T.: 3.983 min
 Delta R.T.: 0.000 min
 Response: 89952330
 Conc: 10.76 ng/ml



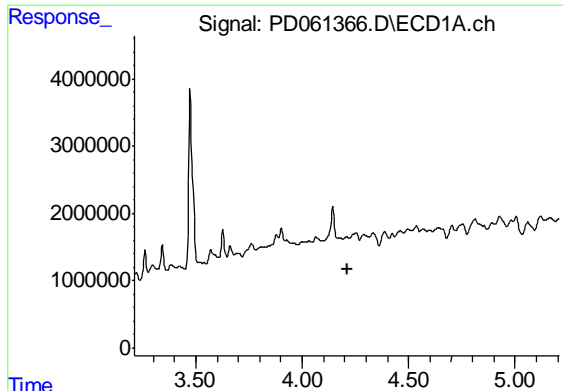
#2 alpha-BHC

R.T.: 3.880 min
 Delta R.T.: -0.046 min
 Response: -370066
 Conc: N.D.



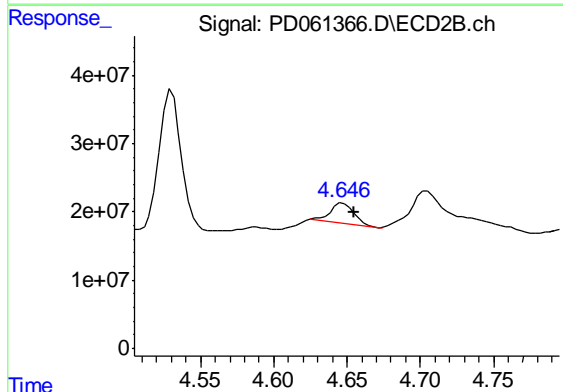
#2 alpha-BHC

R.T.: 4.388 min
 Delta R.T.: 0.018 min
 Response: 2469196
 Conc: 0.19 ng/ml

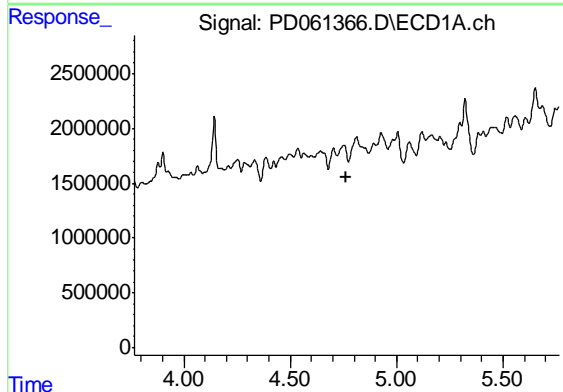


#3 gamma-BHC (Lindane)
 R.T.: 0.000 min
 Exp R.T. : 4.211 min
 Response: 0
 Conc: N.D.

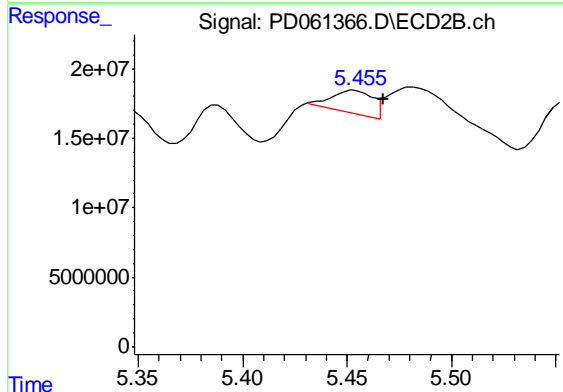
Instrument :
 ECD_D
 ClientSampled :
 DBGZ9



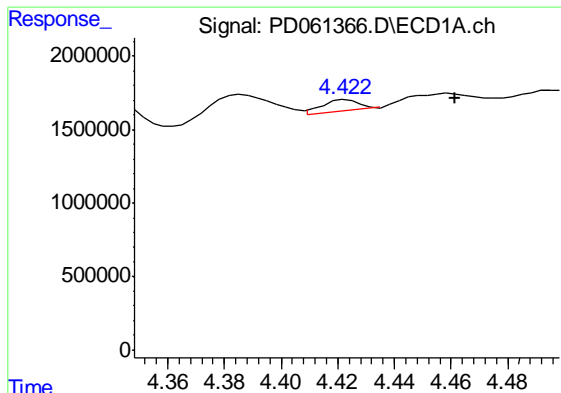
#3 gamma-BHC (Lindane)
 R.T.: 4.648 min
 Delta R.T.: -0.007 min
 Response: 33507567
 Conc: 2.87 ng/ml



#5 Aldrin
 R.T.: 0.000 min
 Exp R.T. : 4.765 min
 Response: 0
 Conc: N.D.



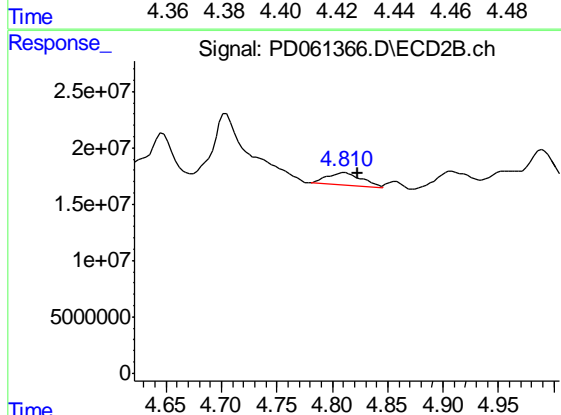
#5 Aldrin
 R.T.: 5.453 min
 Delta R.T.: -0.014 min
 Response: 22227776
 Conc: 2.04 ng/ml



#6 beta-BHC

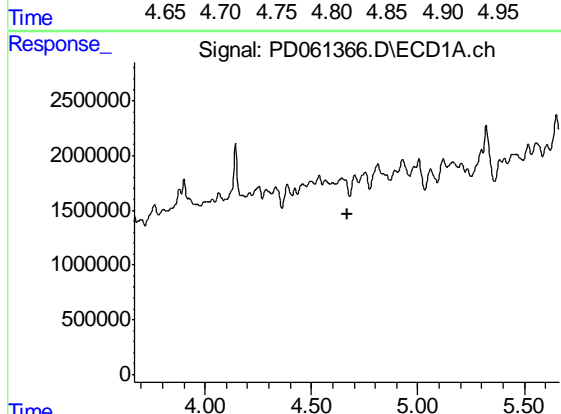
R.T.: 4.423 min
 Delta R.T.: -0.038 min
 Response: 664361
 Conc: 1.07 ng/ml

Instrument :
 ECD_D
 ClientSampleId :
 DBGZ9



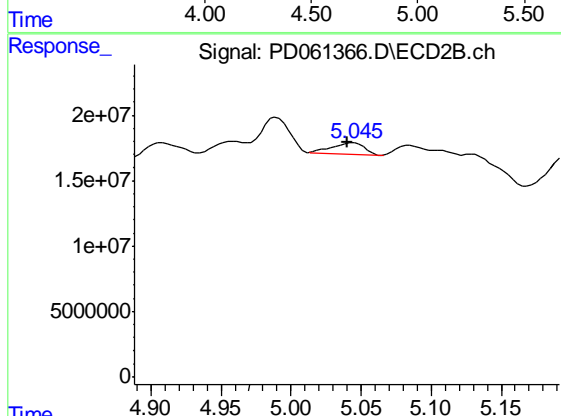
#6 beta-BHC

R.T.: 4.811 min
 Delta R.T.: -0.012 min
 Response: 23574552
 Conc: 4.80 ng/ml



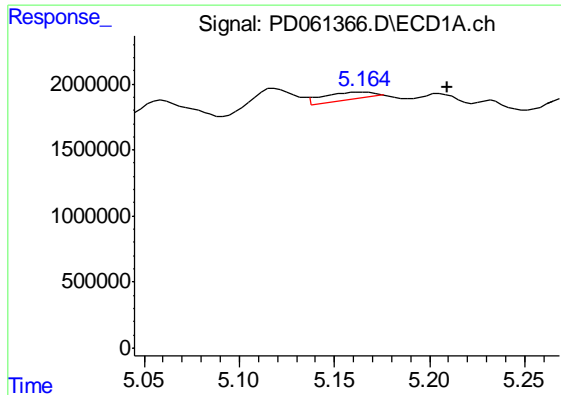
#7 delta-BHC

R.T.: 4.704 min
 Delta R.T.: 0.036 min
 Response: -250995
 Conc: N.D.



#7 delta-BHC

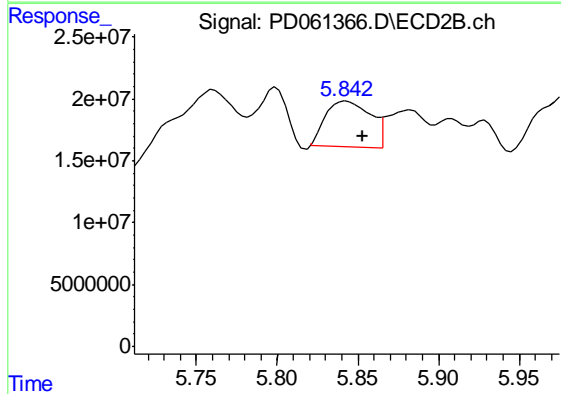
R.T.: 5.045 min
 Delta R.T.: 0.005 min
 Response: 13393030
 Conc: 1.15 ng/ml



#8 Heptachlor epoxide

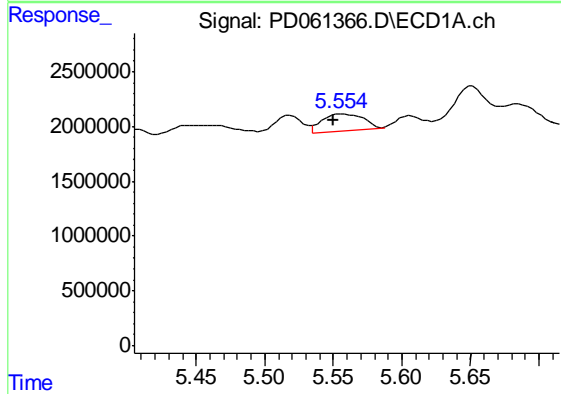
R.T.: 5.165 min
 Delta R.T.: -0.044 min
 Response: 972742
 Conc: 0.81 ng/ml

Instrument :
 ECD_D
 ClientSampleId :
 DBGZ9



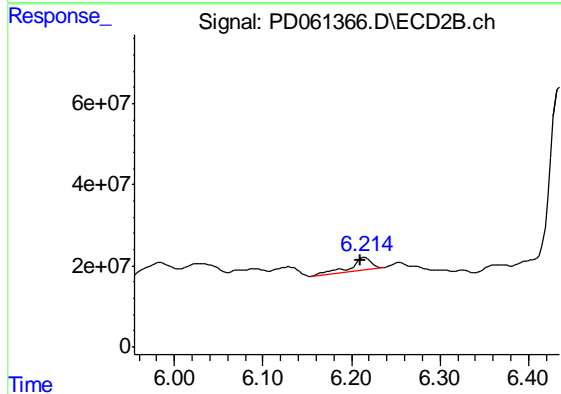
#8 Heptachlor epoxide

R.T.: 5.843 min
 Delta R.T.: -0.010 min
 Response: 72237681
 Conc: 7.28 ng/ml



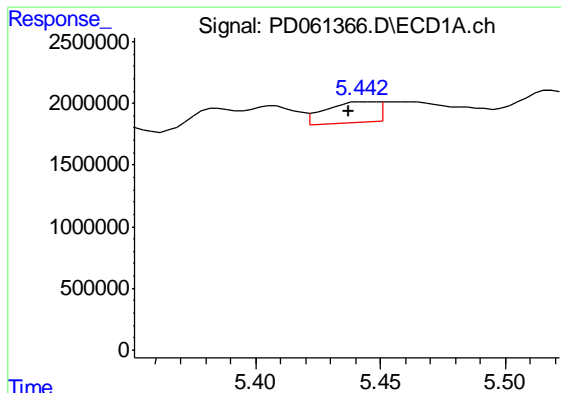
#9 Endosulfan I

R.T.: 5.556 min
 Delta R.T.: 0.005 min
 Response: 3331200
 Conc: 2.82 ng/ml



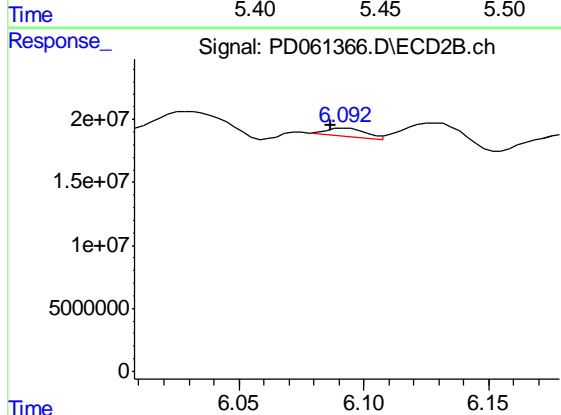
#9 Endosulfan I

R.T.: 6.215 min
 Delta R.T.: 0.006 min
 Response: 47667525
 Conc: 5.16 ng/ml

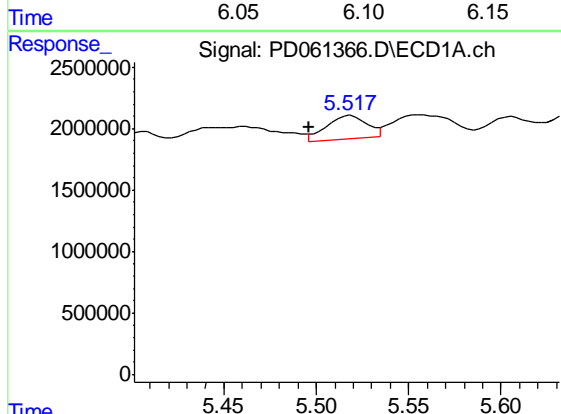


#10 trans-Chlordane
 R.T.: 5.445 min
 Delta R.T.: 0.007 min
 Response: 2430615
 Conc: 1.95 ng/ml

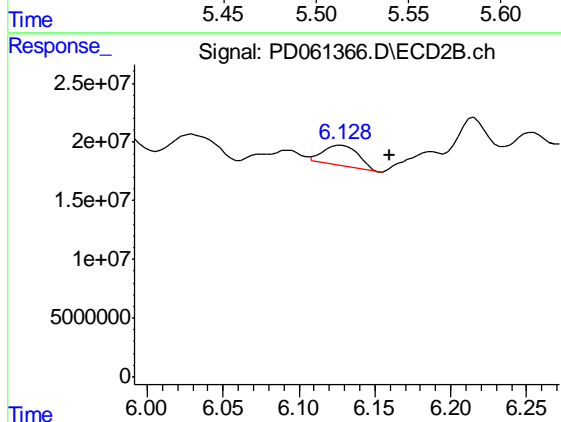
Instrument :
 ECD_D
 ClientSampleId :
 DBGZ9



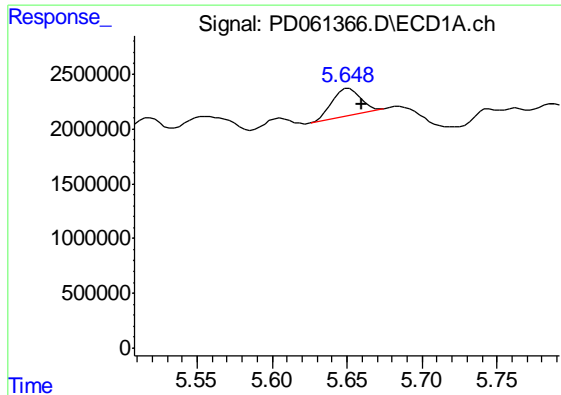
#10 trans-Chlordane
 R.T.: 6.093 min
 Delta R.T.: 0.006 min
 Response: 7316527
 Conc: 0.73 ng/ml



#11 cis-Chlordane
 R.T.: 5.519 min
 Delta R.T.: 0.022 min
 Response: 2818727
 Conc: 2.32 ng/ml



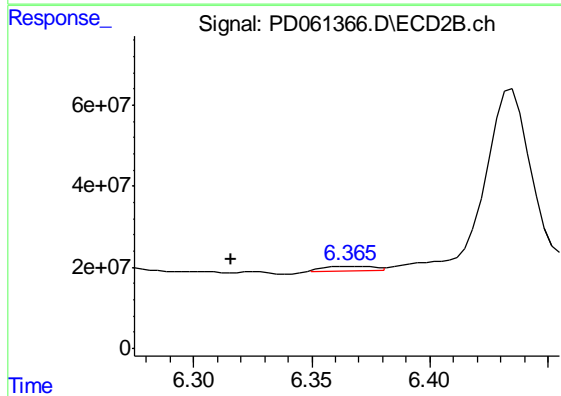
#11 cis-Chlordane
 R.T.: 6.129 min
 Delta R.T.: -0.031 min
 Response: 28499072
 Conc: 3.00 ng/ml



#12 4,4'-DDE

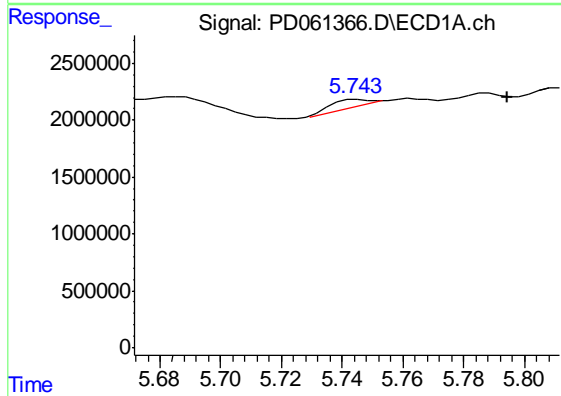
R.T.: 5.651 min
 Delta R.T.: -0.008 min
 Response: 3283138
 Conc: 2.83 ng/ml

Instrument :
 ECD_D
 ClientSampleId :
 DBGZ9



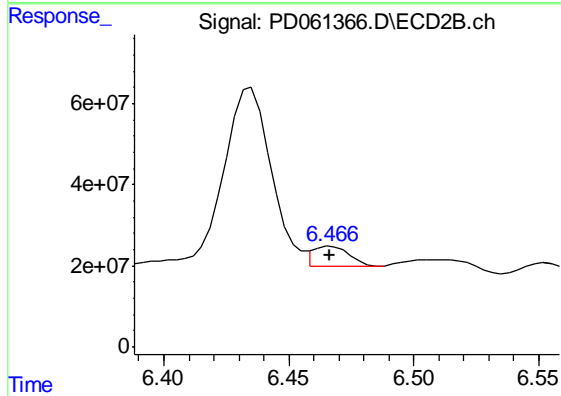
#12 4,4'-DDE

R.T.: 6.368 min
 Delta R.T.: 0.052 min
 Response: 15325404
 Conc: 1.61 ng/ml



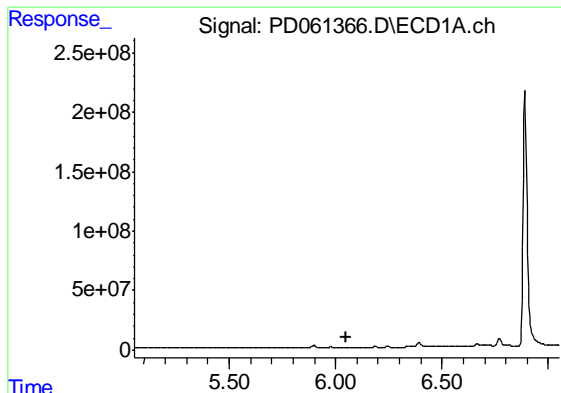
#13 Dieldrin

R.T.: 5.745 min
 Delta R.T.: -0.050 min
 Response: 550934
 Conc: 0.43 ng/ml



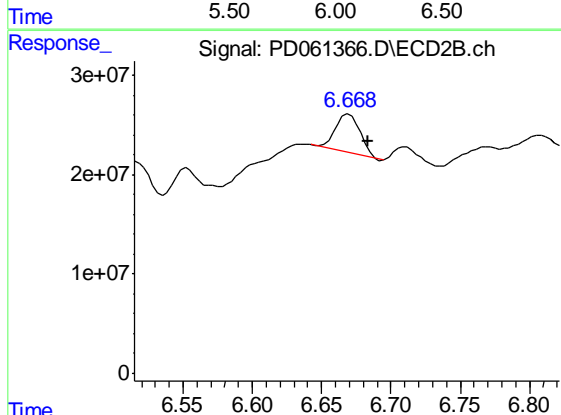
#13 Dieldrin

R.T.: 6.467 min
 Delta R.T.: 0.001 min
 Response: 52215298
 Conc: 5.31 ng/ml

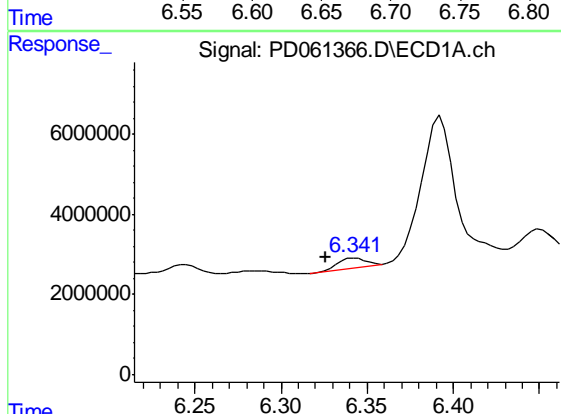


#14 Endrin
 R.T.: 0.000 min
 Exp R.T.: 6.053 min
 Response: 0
 Conc: N.D.

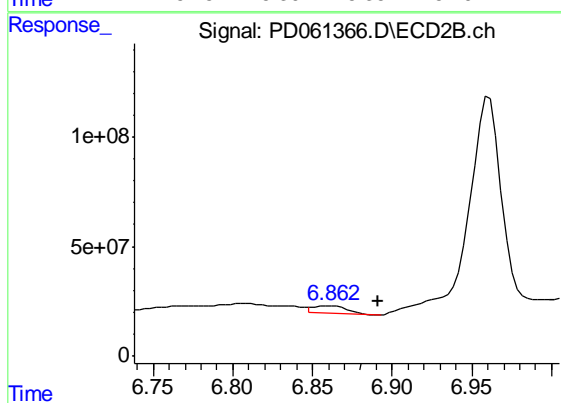
Instrument :
 ECD_D
 ClientSampleId :
 DBGZ9



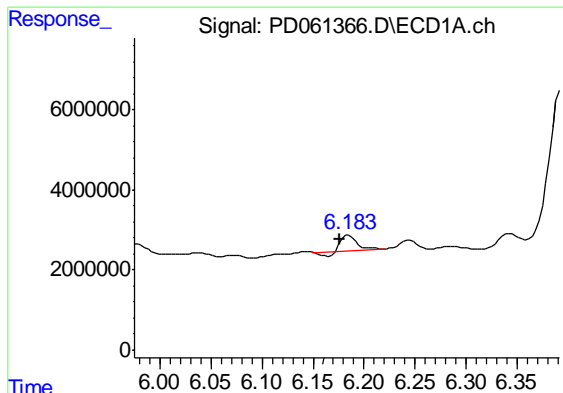
#14 Endrin
 R.T.: 6.670 min
 Delta R.T.: -0.014 min
 Response: 48334239
 Conc: 6.26 ng/ml



#15 Endosulfan II
 R.T.: 6.343 min
 Delta R.T.: 0.017 min
 Response: 2607021
 Conc: 2.57 ng/ml



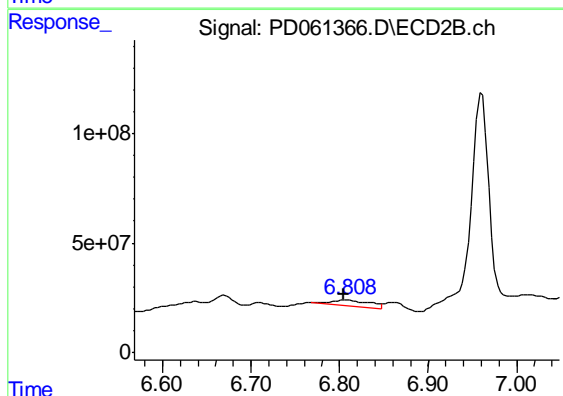
#15 Endosulfan II
 R.T.: 6.861 min
 Delta R.T.: -0.030 min
 Response: 49103413
 Conc: 6.39 ng/ml



#16 4,4'-DDD

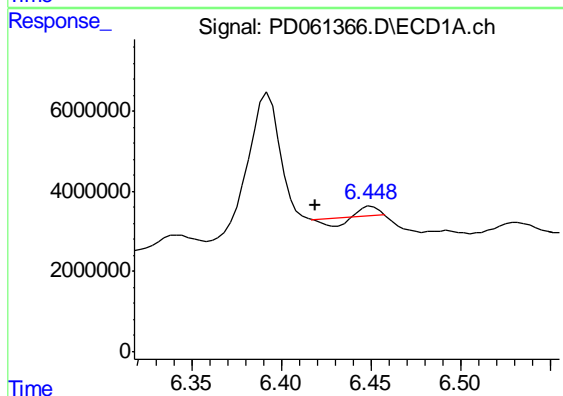
R.T.: 6.185 min
 Delta R.T.: 0.008 min
 Response: 3448684
 Conc: 3.40 ng/ml

Instrument :
 ECD_D
 ClientSampleId :
 DBGZ9



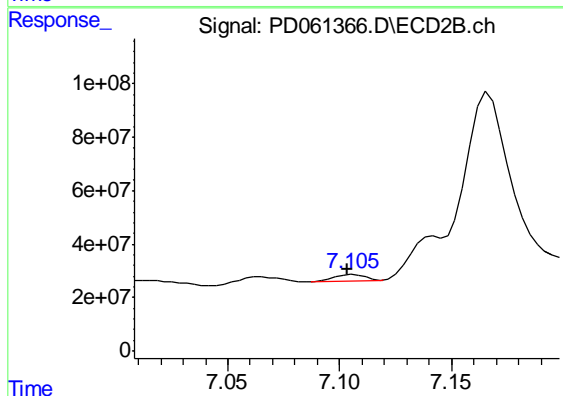
#16 4,4'-DDD

R.T.: 6.808 min
 Delta R.T.: 0.003 min
 Response: 76740821
 Conc: 10.01 ng/ml



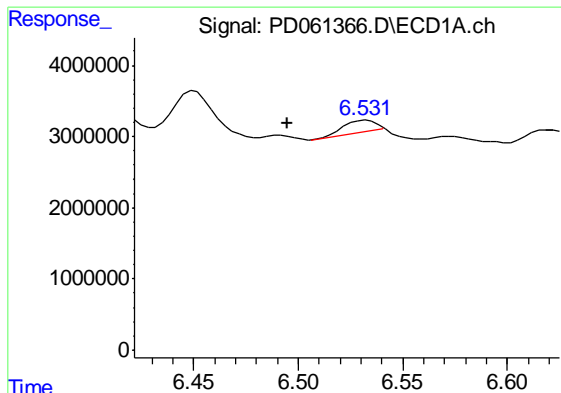
#17 4,4'-DDT

R.T.: 6.450 min
 Delta R.T.: 0.031 min
 Response: 274191
 Conc: 0.27 ng/ml



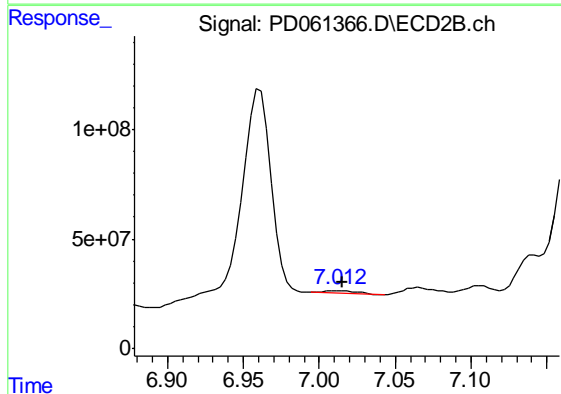
#17 4,4'-DDT

R.T.: 7.106 min
 Delta R.T.: 0.003 min
 Response: 21790032
 Conc: 2.92 ng/ml

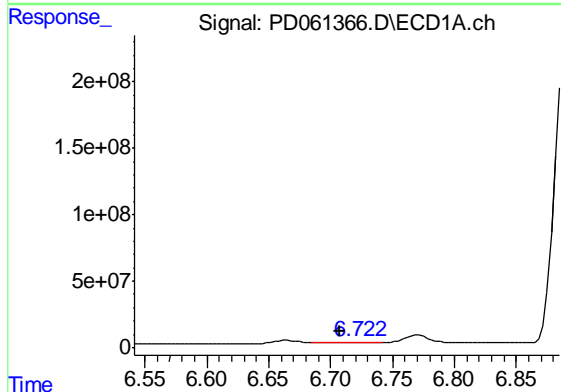


#18 Endrin aldehyde
 R.T.: 6.532 min
 Delta R.T.: 0.038 min
 Response: 1839823
 Conc: 2.05 ng/ml

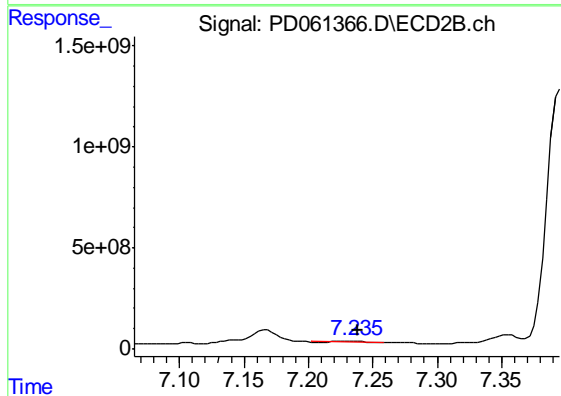
Instrument :
 ECD_D
 ClientSampleId :
 DBGZ9



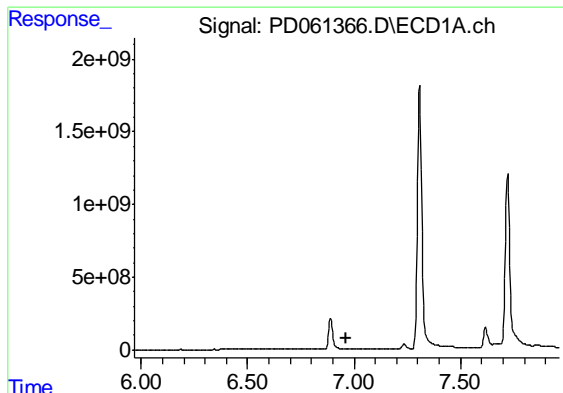
#18 Endrin aldehyde
 R.T.: 7.012 min
 Delta R.T.: -0.003 min
 Response: 21654658
 Conc: 3.47 ng/ml



#19 Endosulfan Sulfate
 R.T.: 6.723 min
 Delta R.T.: 0.015 min
 Response: 3760414
 Conc: 3.61 ng/ml



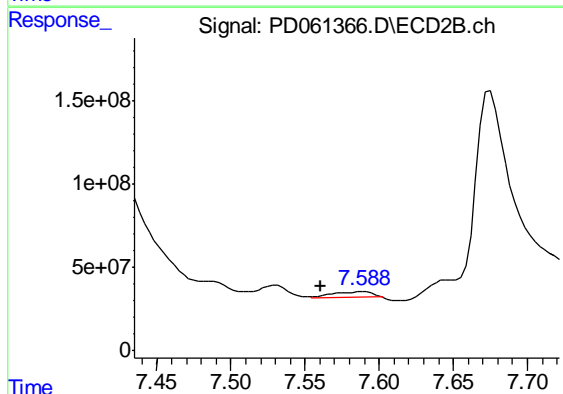
#19 Endosulfan Sulfate
 R.T.: 7.233 min
 Delta R.T.: -0.005 min
 Response: 83419492
 Conc: 11.42 ng/ml



#20 Methoxychlor

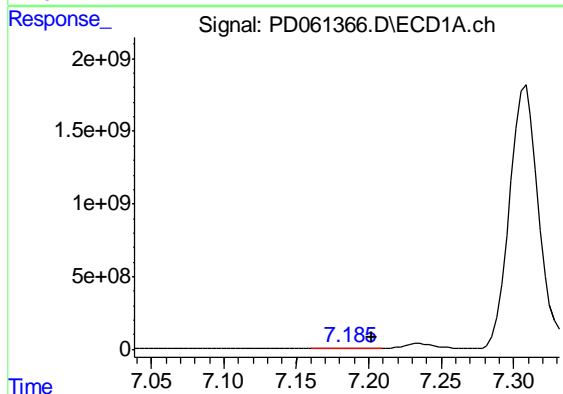
R.T.: 0.000 min
 Exp R.T. : 6.965 min
 Response: 0
 Conc: N.D.

Instrument :
 ECD_D
 ClientSampleId :
 DBGZ9



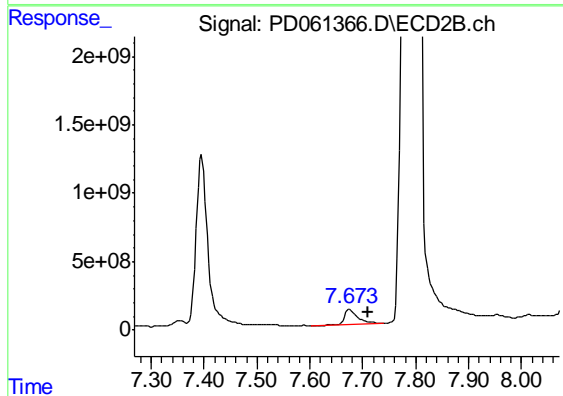
#20 Methoxychlor

R.T.: 7.589 min
 Delta R.T.: 0.028 min
 Response: 63536083
 Conc: 18.18 ng/ml



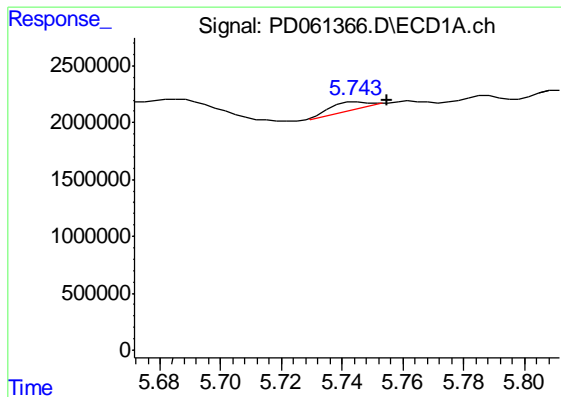
#21 Endrin ketone

R.T.: 7.189 min
 Delta R.T.: -0.013 min
 Response: 38060140
 Conc: 31.84 ng/ml



#21 Endrin ketone

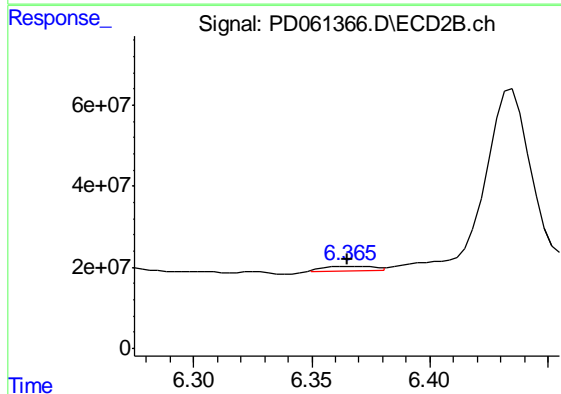
R.T.: 7.675 min
 Delta R.T.: -0.034 min
 Response: 1930037430
 Conc: 267.12 ng/ml



#22 Toxaphene-1

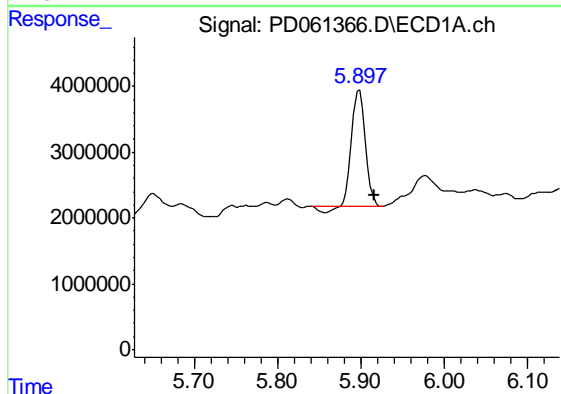
R.T.: 5.745 min
Delta R.T.: -0.010 min
Response: 550934
Conc: 52.06 ng/ml

Instrument :
ECD_D
ClientSampleId :
DBGZ9



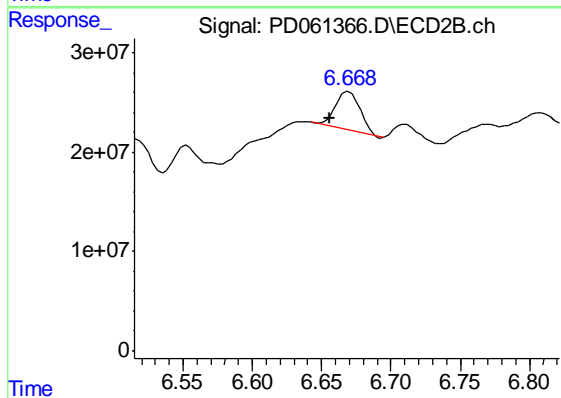
#22 Toxaphene-1

R.T.: 6.368 min
Delta R.T.: 0.003 min
Response: 15325404
Conc: 275.09 ng/ml



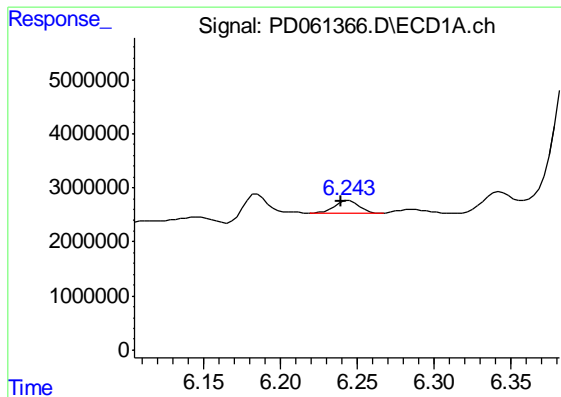
#23 Toxaphene-2

R.T.: 5.898 min
Delta R.T.: -0.019 min
Response: 19963257
Conc: 1875.18 ng/ml



#23 Toxaphene-2

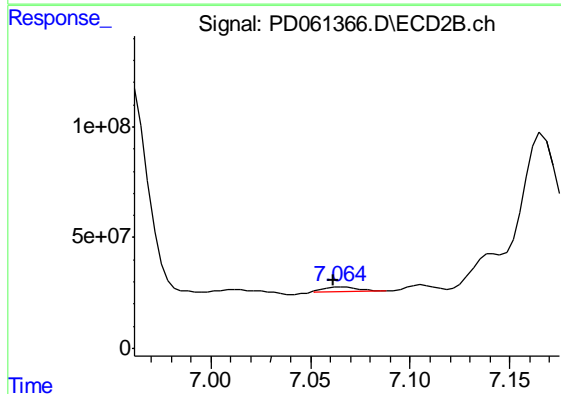
R.T.: 6.670 min
Delta R.T.: 0.014 min
Response: 48334239
Conc: 700.26 ng/ml



#24 Toxaphene-3

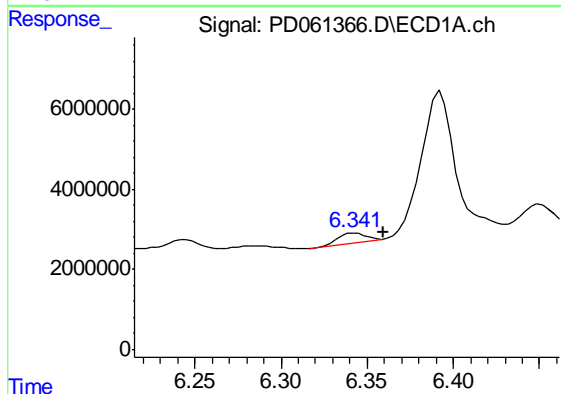
R.T.: 6.245 min
 Delta R.T.: 0.005 min
 Response: 2588270
 Conc: 235.88 ng/ml

Instrument :
 ECD_D
 ClientSampled :
 DBGZ9



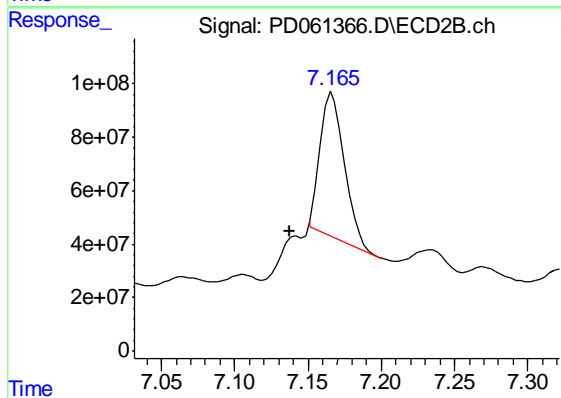
#24 Toxaphene-3

R.T.: 7.065 min
 Delta R.T.: 0.004 min
 Response: 25572883
 Conc: 268.83 ng/ml



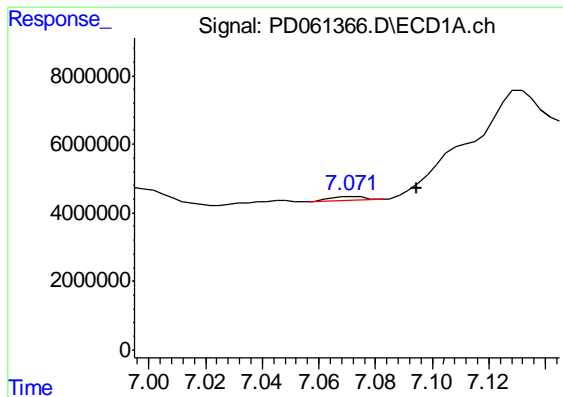
#25 Toxaphene-4

R.T.: 6.343 min
 Delta R.T.: -0.017 min
 Response: 2607021
 Conc: 96.41 ng/ml



#25 Toxaphene-4

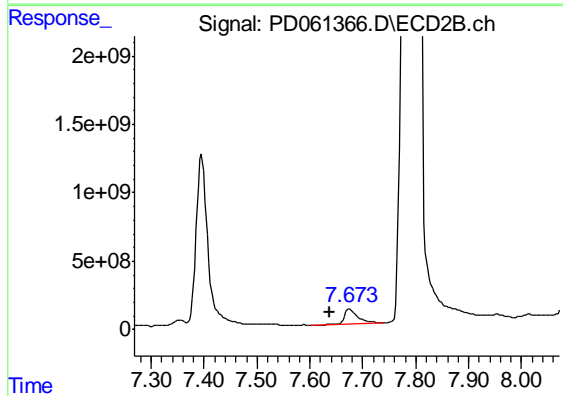
R.T.: 7.167 min
 Delta R.T.: 0.029 min
 Response: 609634484
 Conc: 2373.21 ng/ml



#26 Toxaphene-5

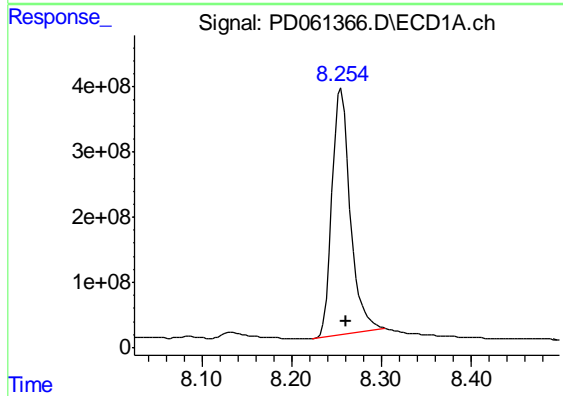
R.T.: 7.072 min
 Delta R.T.: -0.023 min
 Response: 947454
 Conc: 32.06 ng/ml

Instrument :
 ECD_D
 ClientSampleId :
 DBGZ9



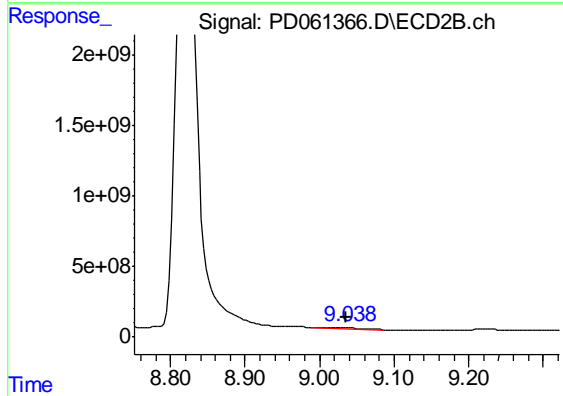
#26 Toxaphene-5

R.T.: 7.675 min
 Delta R.T.: 0.038 min
 Response: 1930037430
 Conc: 17833.83 ng/ml



#27 Decachlorobiphenyl

R.T.: 8.255 min
 Delta R.T.: -0.005 min
 Response: 5350533813
 Conc: 4348.85 ng/ml



#27 Decachlorobiphenyl

R.T.: 9.037 min
 Delta R.T.: 0.000 min
 Response: 30078406
 Conc: 4.18 ng/ml