

Data Path : Z:\pestpcbsrv\HPCHEM1\ECD\_D\Data\PD022121\  
 Data File : PD061372.D  
 Signal(s) : Signal #1: ECD1A.ch Signal #2: ECD2B.ch  
 Acq On : 22 Feb 2021 02:15  
 Operator : DD\AJ  
 Sample : M1379-17  
 Misc :  
 ALS Vial : 49 Sample Multiplier: 1

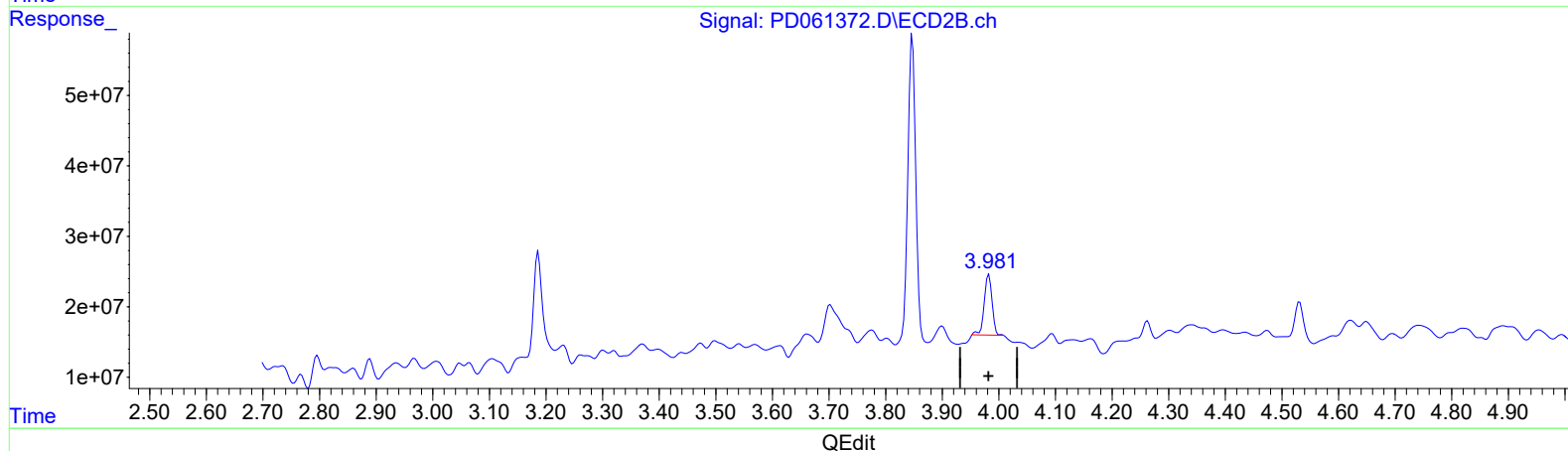
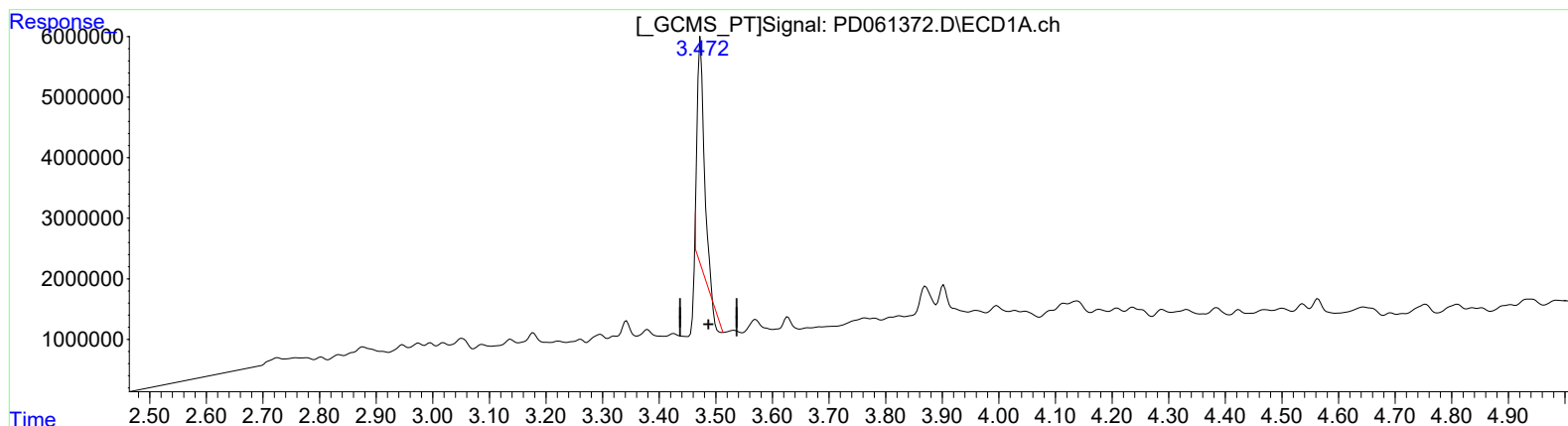
Instrument :  
 ECD\_D  
 ClientSampled :  
 DBH01

Manual Integrations  
 APPROVED

Ankita  
 2/23/2021 8:55:12 AM

Integration File signal 1: autoint1.e  
 Integration File signal 2: autoint2.e  
 Quant Time: Feb 22 05:08:26 2021  
 Quant Method : Z:\pestpcbsrv\HPCHEM1\ECD\_D\Method\PD022121CLP.M  
 Quant Title : GC Extractables  
 QLast Update : Mon Feb 22 04:35:05 2021  
 Response via : Initial Calibration  
 Integrator: ChemStation

Volume Inj. : 1 µl  
 Signal #1 Phase : ZB-MR2 Signal #2 Phase: ZB-MR1  
 Signal #1 Info : 30M x 0.32mm x 0.2 Signal #2 Info : 30M x 0.32mm x 0.50µm



(1) Tetrachloro-m-xylene (SA)

3.473min 30.668 ng/ml

response 28240275

(1) Tetrachloro-m-xylene #2 (SA)

3.982min 9.849 ng/ml

response 82352535

Data Path : Z:\pestpcbsrv\HPCHEM1\ECD\_D\Data\PD022121\  
 Data File : PD061372.D  
 Signal(s) : Signal #1: ECD1A.ch Signal #2: ECD2B.ch  
 Acq On : 22 Feb 2021 02:15  
 Operator : DD\AJ  
 Sample : M1379-17  
 Misc :  
 ALS Vial : 49 Sample Multiplier: 1

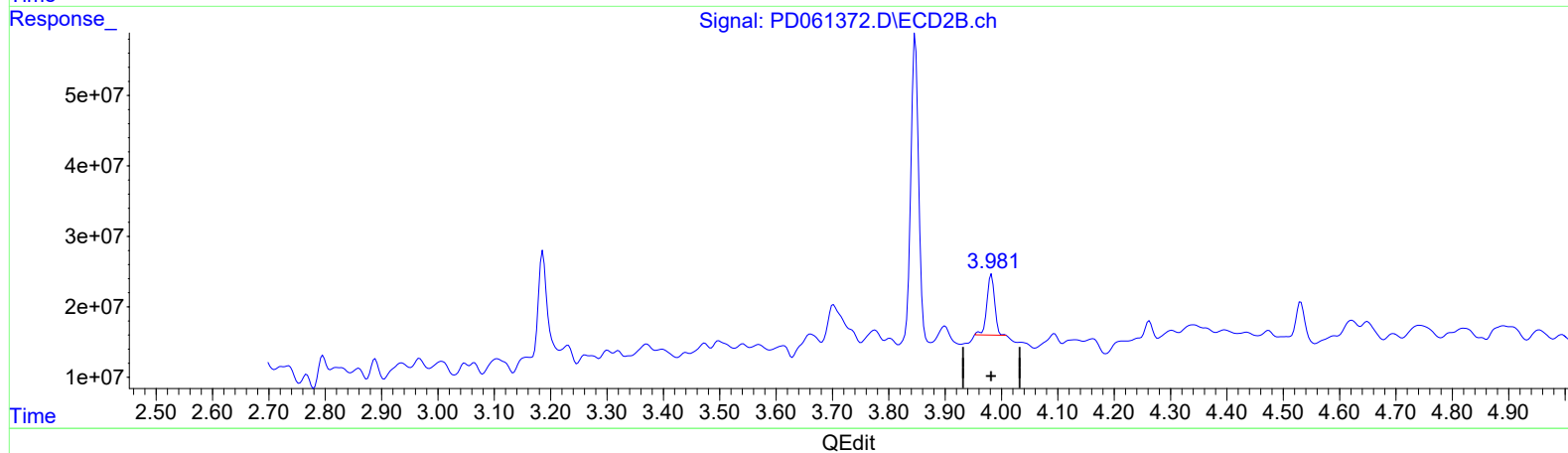
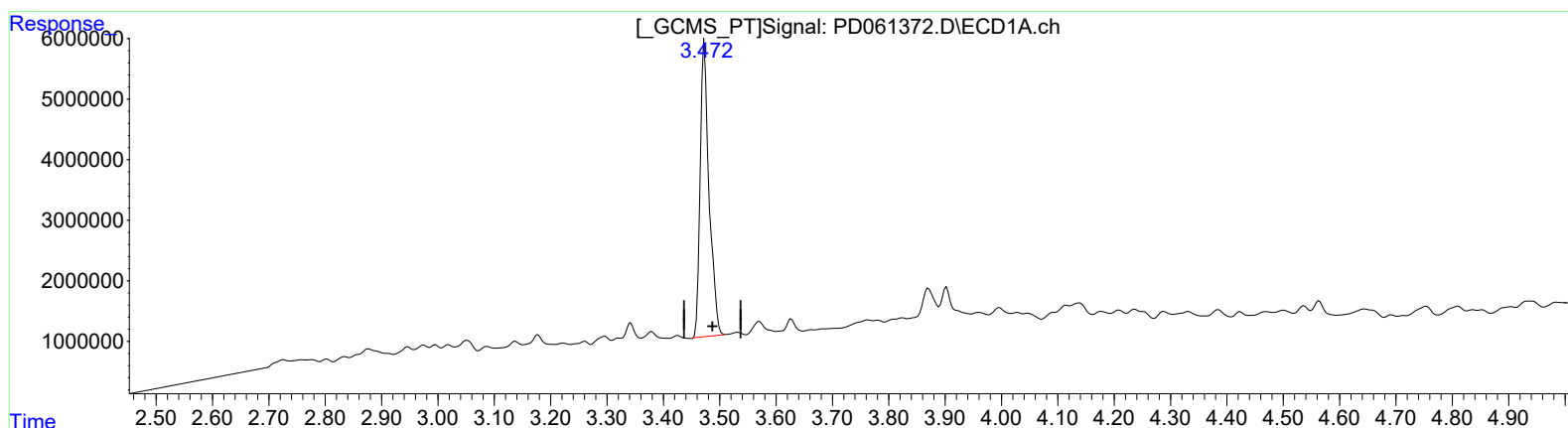
Instrument :  
 ECD\_D  
 ClientSampled :  
 DBH01

Manual Integrations  
 APPROVED

Ankita  
 2/23/2021 8:55:12 AM

Integration File signal 1: autoint1.e  
 Integration File signal 2: autoint2.e  
 Quant Time: Feb 22 05:08:26 2021  
 Quant Method : Z:\pestpcbsrv\HPCHEM1\ECD\_D\Method\PD022121CLP.M  
 Quant Title : GC Extractables  
 QLast Update : Mon Feb 22 04:35:05 2021  
 Response via : Initial Calibration  
 Integrator: ChemStation

Volume Inj. : 1 µl  
 Signal #1 Phase : ZB-MR2 Signal #2 Phase: ZB-MR1  
 Signal #1 Info : 30M x 0.32mm x 0.2 Signal #2 Info : 30M x 0.32mm x 0.50µm



(1) Tetrachloro-m-xylene (SA)

3.472min 58.383 ng/ml m

response 53762006

(1) Tetrachloro-m-xylene #2 (SA)

3.982min 9.849 ng/ml

response 82352535

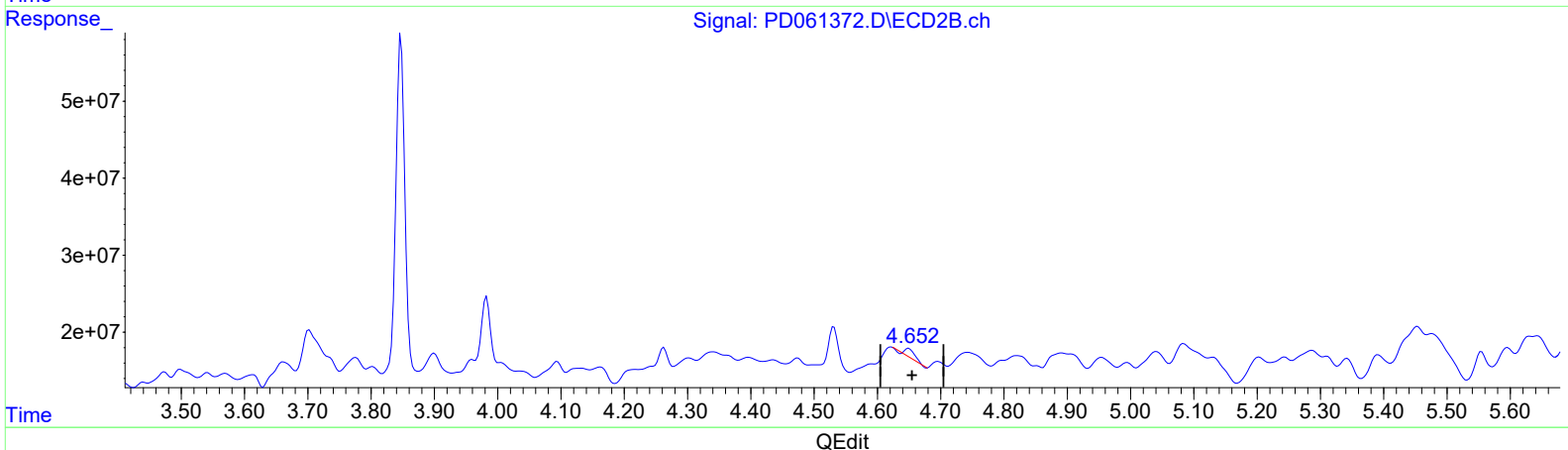
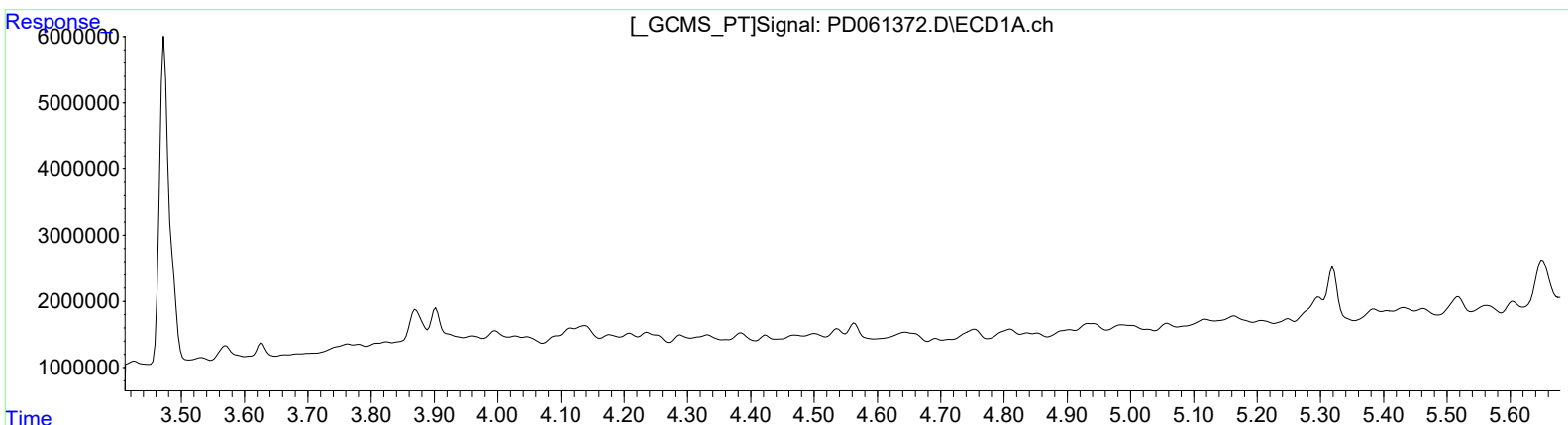
Data Path : Z:\pestpcbsrv\HPCHEM1\ECD\_D\Data\PD022121\  
 Data File : PD061372.D  
 Signal(s) : Signal #1: ECD1A.ch Signal #2: ECD2B.ch  
 Acq On : 22 Feb 2021 02:15  
 Operator : DD\AJ  
 Sample : M1379-17  
 Misc :  
 ALS Vial : 49 Sample Multiplier: 1

**Instrument :**  
 ECD\_D  
**ClientSampled :**  
 DBH01

**Manual Integrations**  
**APPROVED**  
 Ankita  
 2/23/2021 8:55:12 AM

Integration File signal 1: autoint1.e  
 Integration File signal 2: autoint2.e  
 Quant Time: Feb 22 05:08:26 2021  
 Quant Method : Z:\pestpcbsrv\HPCHEM1\ECD\_D\Method\PD022121CLP.M  
 Quant Title : GC Extractables  
 QLast Update : Mon Feb 22 04:35:05 2021  
 Response via : Initial Calibration  
 Integrator: ChemStation

Volume Inj. : 1 µl  
 Signal #1 Phase : ZB-MR2 Signal #2 Phase: ZB-MR1  
 Signal #1 Info : 30M x 0.32mm x 0.2 Signal #2 Info : 30M x 0.32mm x 0.50µm



(3) gamma-BHC (Lindane) (MA)  
 0.000min 0.000 ng/ml  
 response 0

(3) gamma-BHC (Lindane) #2 (MA)  
 4.649min 0.995 ng/ml  
 response 11619667

Data Path : Z:\pestpcbsrv\HPCHEM1\ECD\_D\Data\PD022121\  
 Data File : PD061372.D  
 Signal(s) : Signal #1: ECD1A.ch Signal #2: ECD2B.ch  
 Acq On : 22 Feb 2021 02:15  
 Operator : DD\AJ  
 Sample : M1379-17  
 Misc :  
 ALS Vial : 49 Sample Multiplier: 1

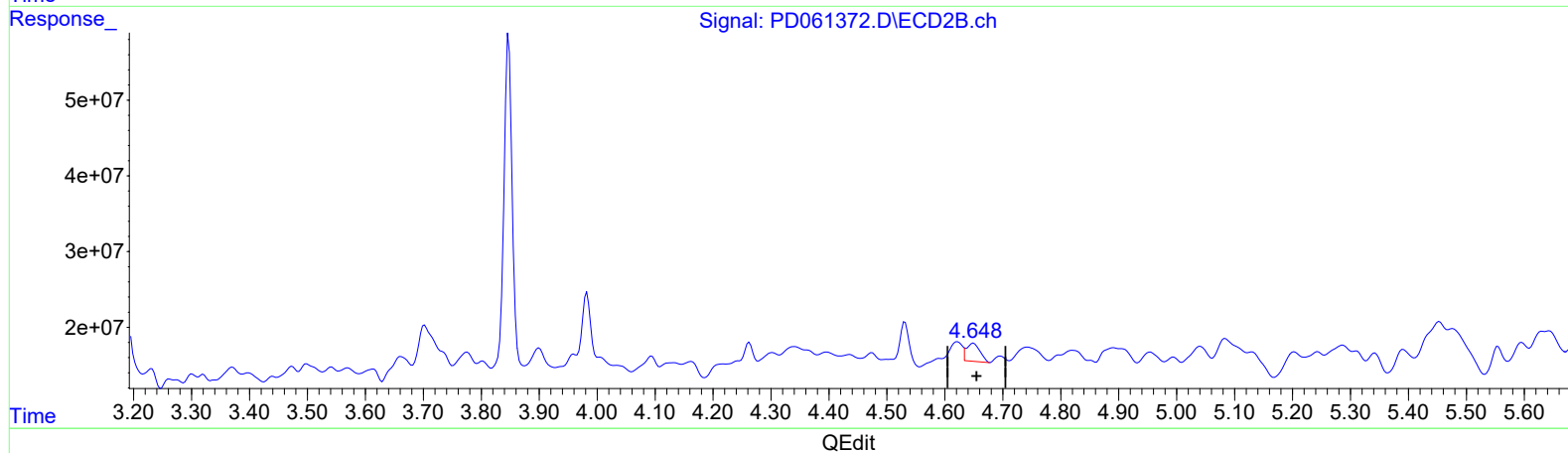
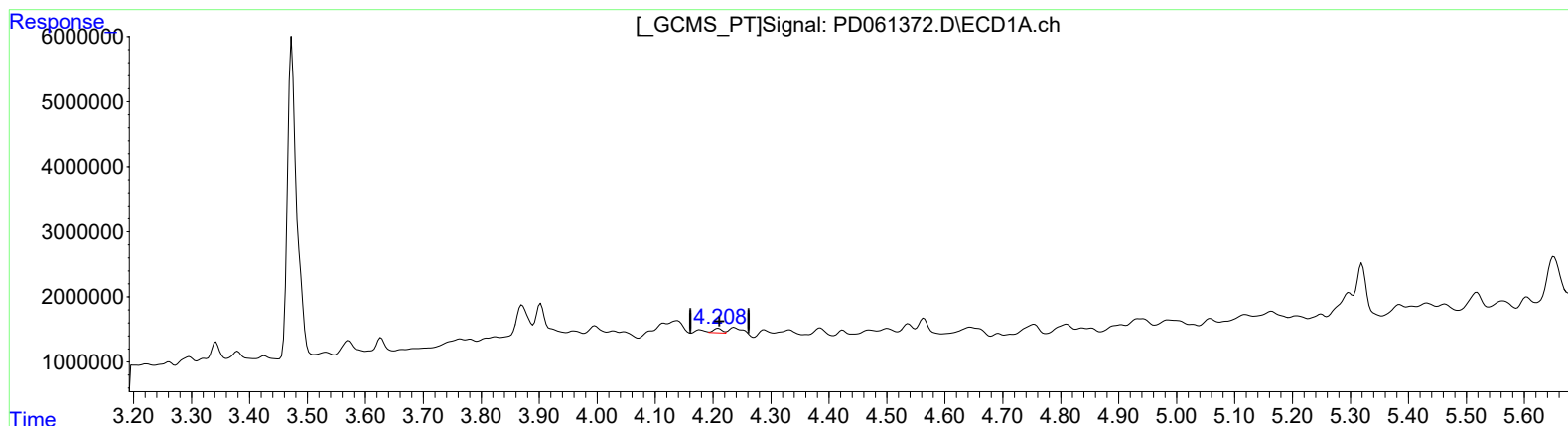
Instrument :  
 ECD\_D  
 ClientSampled :  
 DBH01

Manual Integrations  
 APPROVED

Ankita  
 2/23/2021 8:55:12 AM

Integration File signal 1: autoint1.e  
 Integration File signal 2: autoint2.e  
 Quant Time: Feb 22 05:08:26 2021  
 Quant Method : Z:\pestpcbsrv\HPCHEM1\ECD\_D\Method\PD022121CLP.M  
 Quant Title : GC Extractables  
 QLast Update : Mon Feb 22 04:35:05 2021  
 Response via : Initial Calibration  
 Integrator: ChemStation

Volume Inj. : 1 µl  
 Signal #1 Phase : ZB-MR2 Signal #2 Phase: ZB-MR1  
 Signal #1 Info : 30M x 0.32mm x 0.2 Signal #2 Info : 30M x 0.32mm x 0.50µm



(3) gamma-BHC (Lindane) (MA)

4.208min 0.596 ng/ml m

response 767323

(3) gamma-BHC (Lindane) #2 (MA)

4.648min 3.211 ng/ml m

response 37519586

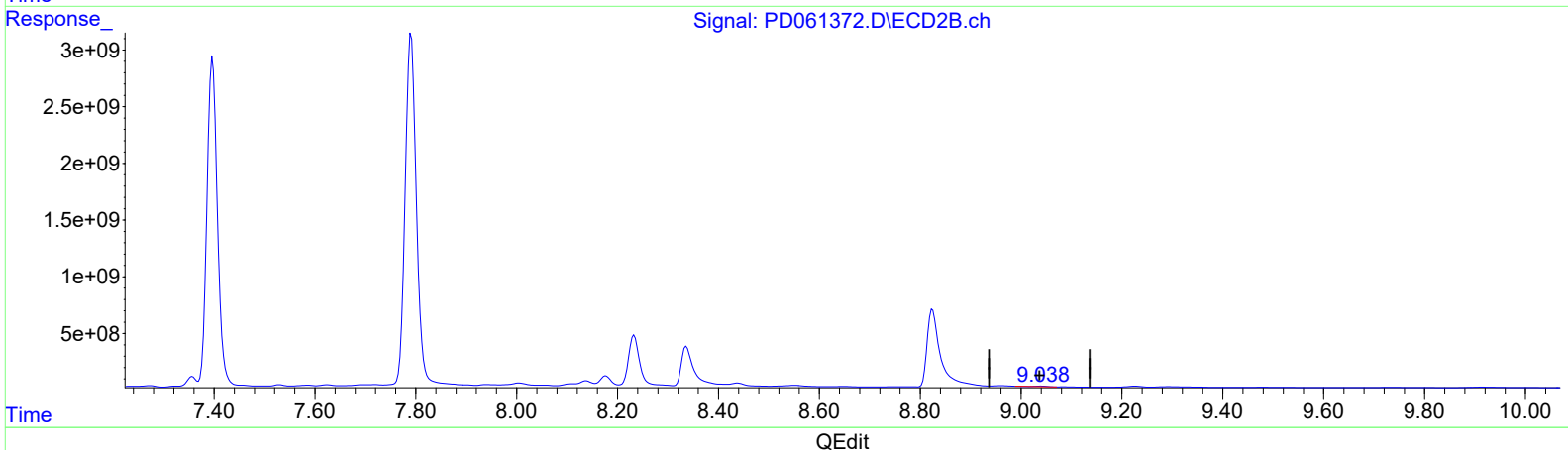
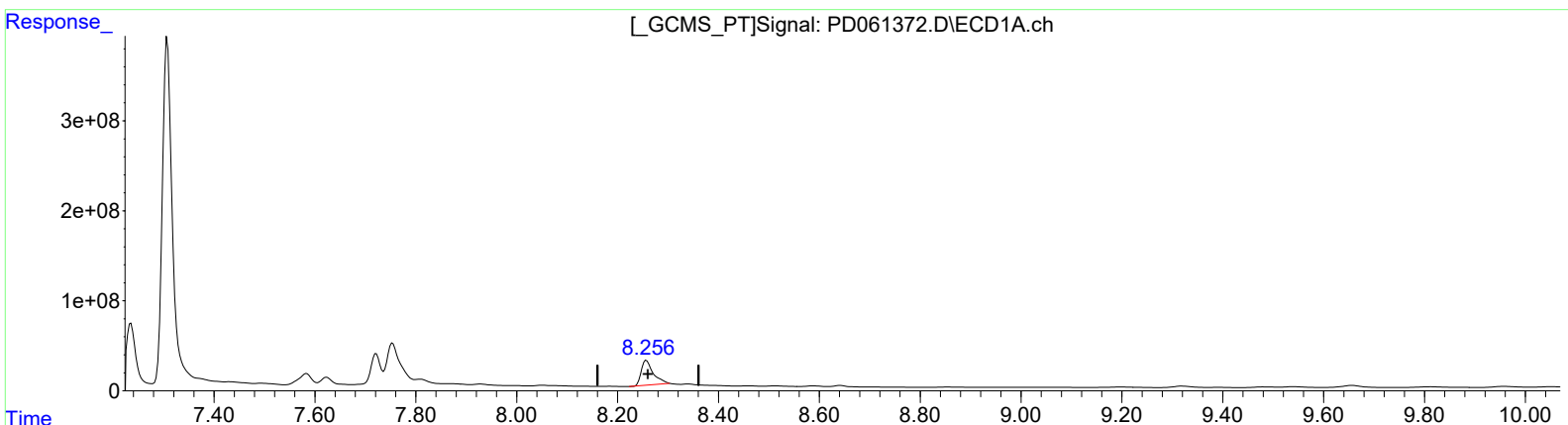
Data Path : Z:\pestpcbsrv\HPCHEM1\ECD\_D\Data\PD022121\  
 Data File : PD061372.D  
 Signal(s) : Signal #1: ECD1A.ch Signal #2: ECD2B.ch  
 Acq On : 22 Feb 2021 02:15  
 Operator : DD\AJ  
 Sample : M1379-17  
 Misc :  
 ALS Vial : 49 Sample Multiplier: 1

**Instrument :**  
 ECD\_D  
**ClientSampled :**  
 DBH01

**Manual Integrations**  
**APPROVED**  
 Ankita  
 2/23/2021 8:55:12 AM

Integration File signal 1: autoint1.e  
 Integration File signal 2: autoint2.e  
 Quant Time: Feb 22 05:08:26 2021  
 Quant Method : Z:\pestpcbsrv\HPCHEM1\ECD\_D\Method\PD022121CLP.M  
 Quant Title : GC Extractables  
 QLast Update : Mon Feb 22 04:35:05 2021  
 Response via : Initial Calibration  
 Integrator: ChemStation

Volume Inj. : 1 µl  
 Signal #1 Phase : ZB-MR2 Signal #2 Phase: ZB-MR1  
 Signal #1 Info : 30M x 0.32mm x0.2 Signal #2 Info : 30M x 0.32mm x 0.50µm



(27) Decachlorobiphenyl (SA)

8.257min 371.050 ng/ml

response 456515332

(27) Decachlorobiphenyl #2 (SA)

9.038min 7.512 ng/ml

response 53987396

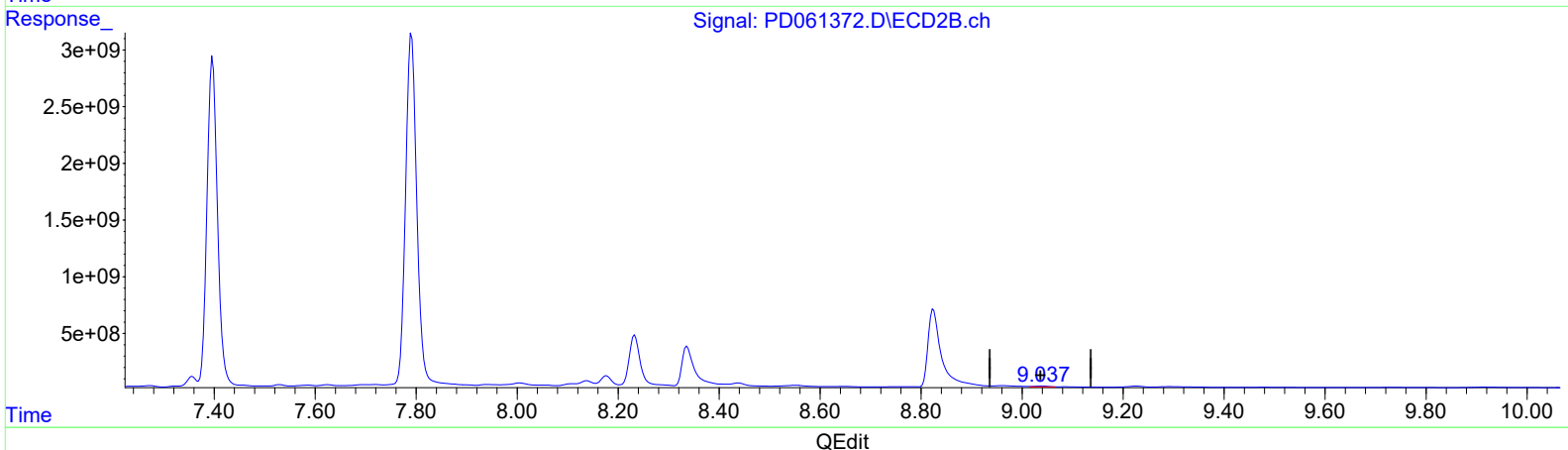
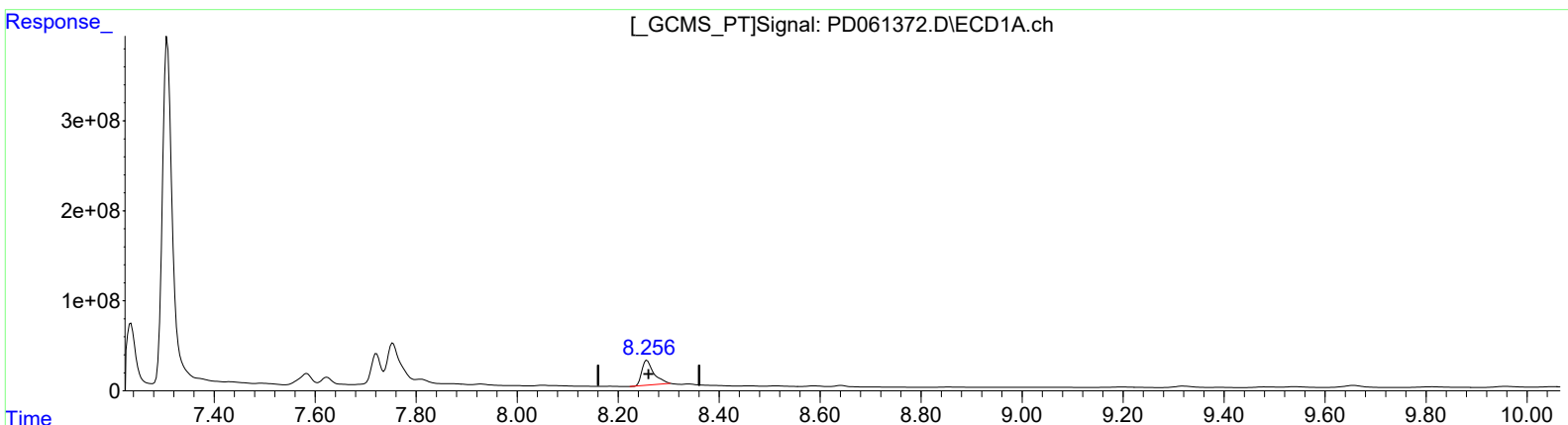
Data Path : Z:\pestpcbsrv\HPCHEM1\ECD\_D\Data\PD022121\  
 Data File : PD061372.D  
 Signal(s) : Signal #1: ECD1A.ch Signal #2: ECD2B.ch  
 Acq On : 22 Feb 2021 02:15  
 Operator : DD\AJ  
 Sample : M1379-17  
 Misc :  
 ALS Vial : 49 Sample Multiplier: 1

**Instrument :**  
 ECD\_D  
**Client Sampled :**  
 DBH01

**Manual Integrations**  
**APPROVED**  
 Ankita  
 2/23/2021 8:55:12 AM

Integration File signal 1: autoint1.e  
 Integration File signal 2: autoint2.e  
 Quant Time: Feb 22 05:08:26 2021  
 Quant Method : Z:\pestpcbsrv\HPCHEM1\ECD\_D\Method\PD022121CLP.M  
 Quant Title : GC Extractables  
 QLast Update : Mon Feb 22 04:35:05 2021  
 Response via : Initial Calibration  
 Integrator: ChemStation

Volume Inj. : 1 µl  
 Signal #1 Phase : ZB-MR2 Signal #2 Phase: ZB-MR1  
 Signal #1 Info : 30M x 0.32mm x0.2 Signal #2 Info : 30M x 0.32mm x 0.50µm



(27) Decachlorobiphenyl (SA)

8.257min 371.050 ng/ml

response 456515332

(27) Decachlorobiphenyl #2 (SA)

9.037min 18.227 ng/ml m

response 130998905

Quantitation Report (QT Reviewed)

Data Path : Z:\pestpcbsrv\HPCHEM1\ECD\_D\Data\PD022121\  
 Data File : PD061372.D  
 Signal(s) : Signal #1: ECD1A.ch Signal #2: ECD2B.ch  
 Acq On : 22 Feb 2021 02:15  
 Operator : DD\AJ  
 Sample : M1379-17  
 Misc :  
 ALS Vial : 49 Sample Multiplier: 1

Instrument :  
 ECD\_D  
 ClientSampleId :  
 DBH01

Manual Integrations  
 APPROVED

Ankita  
 2/23/2021 8:55:12 AM

Integration File signal 1: autoint1.e  
 Integration File signal 2: autoint2.e  
 Quant Time: Feb 22 05:08:26 2021  
 Quant Method : Z:\pestpcbsrv\HPCHEM1\ECD\_D\Method\PD022121CLP.M  
 Quant Title : GC Extractables  
 QLast Update : Mon Feb 22 04:35:05 2021  
 Response via : Initial Calibration  
 Integrator: ChemStation

Volume Inj. : 1 µl  
 Signal #1 Phase : ZB-MR2 Signal #2 Phase: ZB-MR1  
 Signal #1 Info : 30M x 0.32mm x0.2 Signal #2 Info : 30M x 0.32mm x 0.50µm

Compound	RT#1	RT#2	Resp#1	Resp#2	ng/ml	ng/ml
-----						
System Monitoring Compounds						
1) SA Tetrachlo...	3.472	3.982	53762006	82352535	58.383m	9.849 #
27) SA Decachlor...	8.257	9.037	456.5E6	131.0E6	371.050	18.227m#
Target Compounds						
3) MA gamma-BHC...	4.208	4.648	767323	37519586	0.596m	3.211m#
16) A 4,4'-DDD	6.185	6.809	25714976	111.4E6	25.329	14.542 #
-----						

AJ  
 2/24/21  
 AJ  
 2/24/21

(f)=RT Delta > 1/2 Window (#)=Amounts differ by > 25% (m)=manual int.