

Data Path : Z:\pestpcbsrv\HPCHEM1\ECD\_D\Data\PD022219\  
 Data File : PD051326.D  
 Signal(s) : Signal #1: ECD1A.CH Signal #2: ECD2B.CH  
 Acq On : 21 Feb 2019 23:57  
 Operator : AJ\SJ  
 Sample : INDA501  
 Misc :  
 ALS Vial : 17 Sample Multiplier: 1

Instrument :  
 ECD\_D  
 ClientSampleId :

Integration File signal 1: autoint1.e  
 Integration File signal 2: autoint2.e  
 Quant Time: Feb 22 03:54:47 2019  
 Quant Method : Z:\pestpcbsrv\HPCHEM1\ECD\_D\Method\PD022219CLP.M  
 Quant Title : GC Extractables  
 QLast Update : Fri Feb 22 03:49:52 2019  
 Response via : Initial Calibration  
 Integrator: ChemStation 6890 Scale Mode: Large solvent peaks clipped

Volume Inj. : 1 µl  
 Signal #1 Phase : ZB-MR2 Signal #2 Phase: ZB-MR1  
 Signal #1 Info : 30M x 0.32mm x0.2 Signal #2 Info : 30M x 0.32mm x 0.50µm

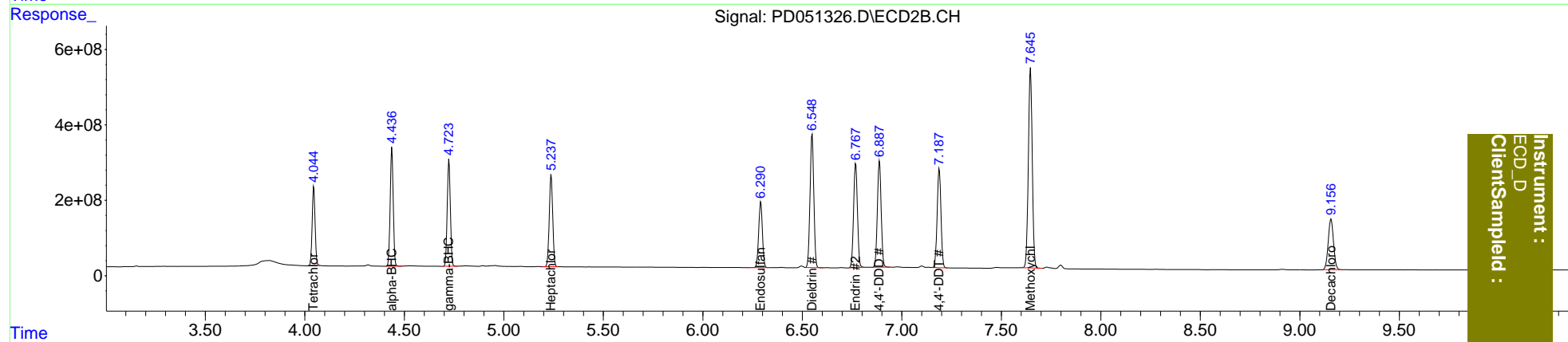
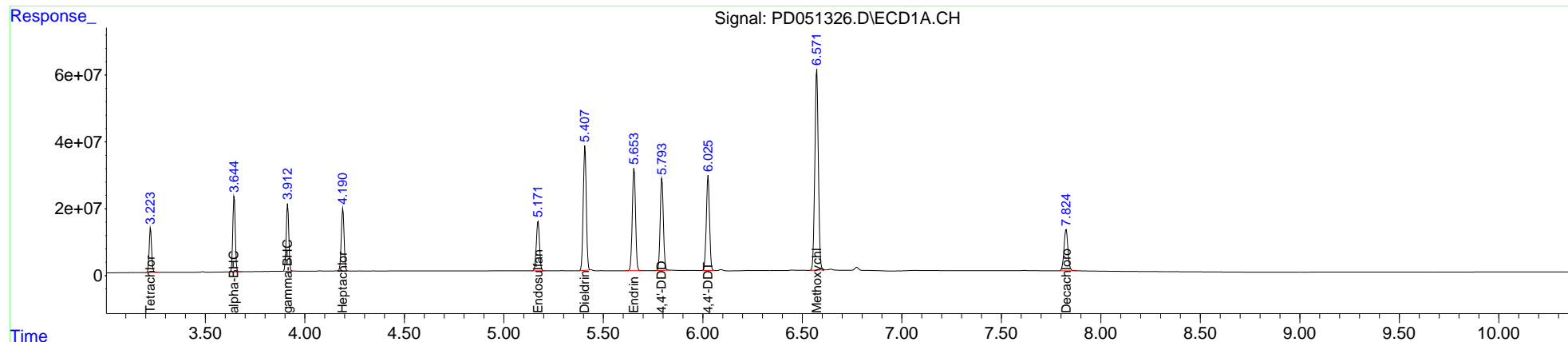
Compound	RT#1	RT#2	Resp#1	Resp#2	ng/ml	ng/ml
-----						
System Monitoring Compounds						
1) SA Tetrachlo...	3.225	4.045	115.4E6	2160.4E6	80.545	74.721
27) SA Decachlor...	7.826	9.157	169.5E6	2490.0E6	150.795	144.385
Target Compounds						
2) A alpha-BHC	3.645	4.438	196.3E6	3374.9E6	84.602	76.212
3) MA gamma-BHC...	3.914	4.725	181.8E6	3054.4E6	83.554	75.799
4) MA Heptachlor	4.191	5.238	181.6E6	2962.6E6	82.260	74.496
9) A Endosulfan I	5.172	6.291	167.6E6	2282.1E6	81.390	74.146
13) MA Dieldrin	5.408	6.549	399.5E6	4676.6E6	166.239	149.910
14) MA Endrin	5.655	6.769	347.3E6	3703.9E6	165.208	149.808
16) A 4,4'-DDD	5.795	6.888	303.5E6	3709.8E6	166.100	150.593
17) MA 4,4'-DDT	6.027	7.188	320.1E6	3507.4E6	167.445	155.348
20) A Methoxychlor	6.573	7.647	740.6E6	7245.4E6	800.279	733.394
-----						

(f)=RT Delta > 1/2 Window (#)=Amounts differ by > 25% (m)=manual int.

Data Path : Z:\pestpcbsrv\HPCHEM1\ECD\_D\Data\PD022219\  
 Data File : PD051326.D  
 Signal(s) : Signal #1: ECD1A.CH Signal #2: ECD2B.CH  
 Acq On : 21 Feb 2019 23:57  
 Operator : AJ\SJ  
 Sample : INDA501  
 Misc :  
 ALS Vial : 17 Sample Multiplier: 1

Integration File signal 1: autoint1.e  
 Integration File signal 2: autoint2.e  
 Quant Time: Feb 22 03:54:47 2019  
 Quant Method : Z:\pestpcbsrv\HPCHEM1\ECD\_D\Method\PD022219CLP.M  
 Quant Title : GC Extractables  
 QLast Update : Fri Feb 22 03:49:52 2019  
 Response via : Initial Calibration  
 Integrator: ChemStation 6890 Scale Mode: Large solvent peaks clipped

Volume Inj. : 1 µl  
 Signal #1 Phase : ZB-MR2 Signal #2 Phase: ZB-MR1  
 Signal #1 Info : 30M x 0.32mm x0.2 Signal #2 Info : 30M x 0.32mm x 0.50µm



Instrument :  
 ECD\_D  
 ClientSampleId :