

Data Path : Z:\pestpcbsrv\HPCHEM1\ECD_D\Data\PD022224\
 Data File : PD081532.D
 Signal(s) : Signal #1: ECD1A.ch Signal #2: ECD2B.ch
 Acq On : 20 Feb 2024 11:31
 Operator : AR\AJ
 Sample : PEM110
 Misc :
 ALS Vial : 3 Sample Multiplier: 1

Instrument :
 ECD_D
 ClientSampleId :
 PEM151

Integration File signal 1: autoint1.e
 Integration File signal 2: autoint2.e
 Quant Time: Feb 20 20:36:17 2024
 Quant Method : Z:\pestpcbsrv\HPCHEM1\ECD_D\Method\PD021224CLP.M
 Quant Title : GC Extractables
 QLast Update : Mon Feb 12 17:06:05 2024
 Response via : Initial Calibration
 Integrator: ChemStation

Volume Inj. : 1 µl
 Signal #1 Phase : ZB-MR2 Signal #2 Phase: ZB-MR2
 Signal #1 Info : 30M x 0.32mm x0.5 Signal #2 Info : 30M x 0.32mm x 0.25µm

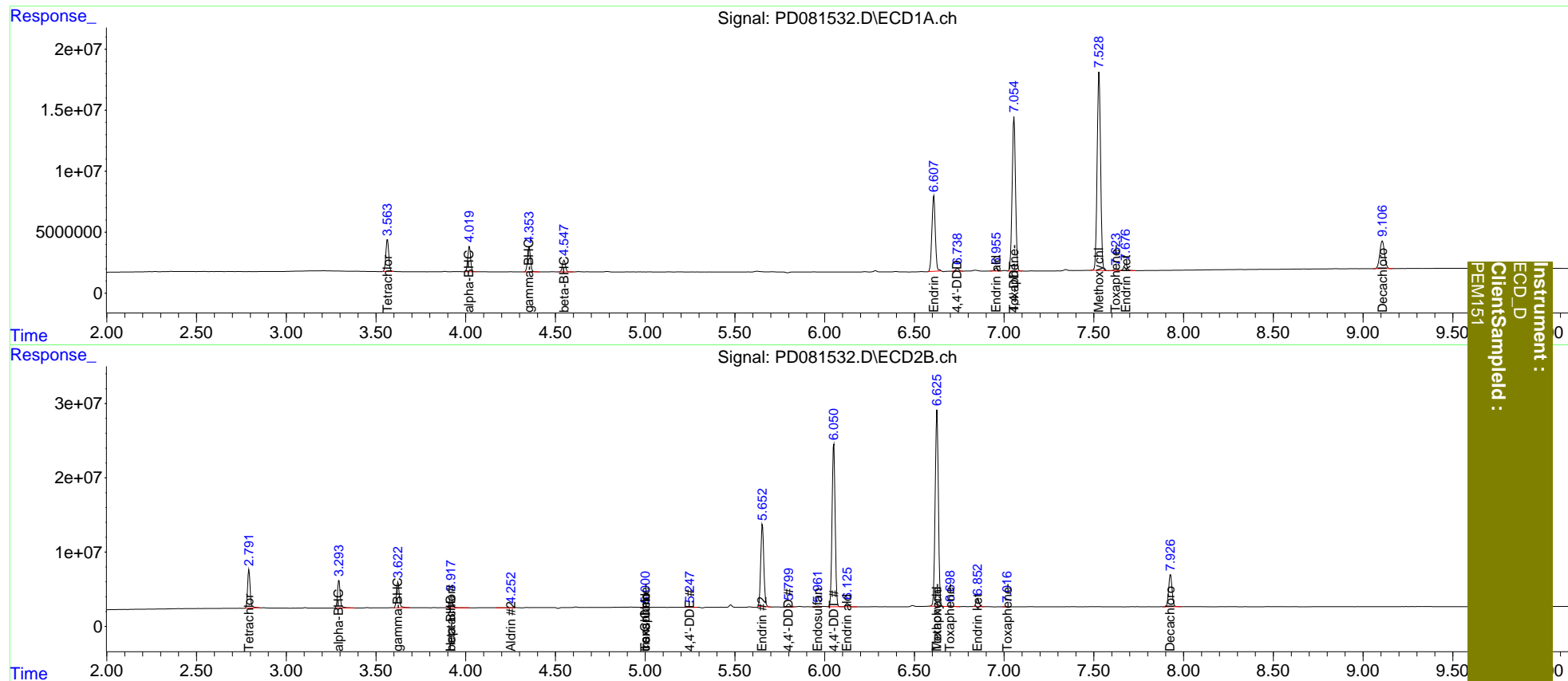
Compound	RT#1	RT#2	Resp#1	Resp#2	ng/ml	ng/ml
System Monitoring Compounds						
1) SA Tetrachlo...	3.564	2.793	29377618	52012026	21.488	21.216
27) SA Decachlor...	9.108	7.927	41380121	56912219	21.448	22.942
Target Compounds						
2) A alpha-BHC	4.021	3.294	23016450	39254991	9.856	10.210
3) MA gamma-BHC...	4.354	3.623	23158361	37113247	10.024	10.247
4) MA Heptachlor	0.000	3.918f	0	18175509	N.D.	5.124
5) MB Aldrin	0.000	4.253	0	1133180	N.D.	0.335
6) B beta-BHC	4.549	3.918	11276188	18175509	10.851	10.757
9) A Endosulfan I	0.000	5.144	0	50041	N.D.	<MDL
10) B trans-Chl...	0.000	5.001	0	812686	N.D.	0.260
11) B cis-Chlor...	0.000	5.001f	0	812686	N.D.	0.254
12) B 4,4'-DDE	0.000	5.249	0	752330	N.D.	0.254
14) MA Endrin	6.608	5.653	80852353	132.4E6	43.082	46.091
15) B Endosulfa...	0.000	5.963	0	1440759	N.D.	0.510
16) A 4,4'-DDD	6.740	5.800	2961346	4992019	1.783	1.981
17) MA 4,4'-DDT	7.055	6.051	165.2E6	261.3E6	95.108	101.184
18) B Endrin al...	6.956	6.126	3279327	5804425	2.195	2.679
20) A Methoxychlor	7.529	6.626	216.0E6	325.8E6	235.432	243.884
21) B Endrin ke...	7.678	6.853	7062920	12118188	3.653	4.041
22) Toxaphene-1	0.000	5.001	0	812686	N.D.	49.638
24) Toxaphene-3	7.055f	6.626	165.2E6	325.8E6	3124.420	5566.907 #
25) Toxaphene-4	0.000	6.700f	0	1355491	N.D.	17.034
26) Toxaphene-5	7.624	7.018f	2002227	31420	67.510	0.969 #

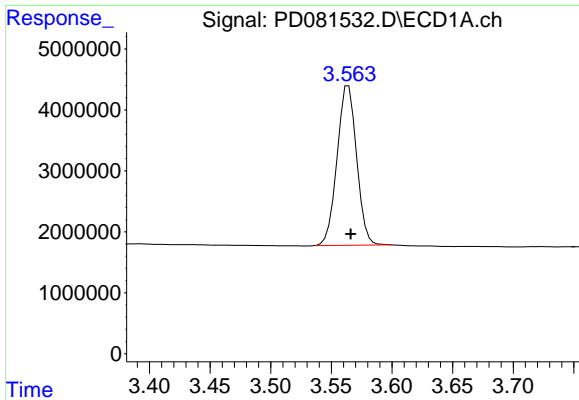
(f)=RT Delta > 1/2 Window (#)=Amounts differ by > 25% (m)=manual int.

Data Path : Z:\pestpcbsrv\HPCHEM1\ECD_D\Data\PD022224\
 Data File : PD081532.D
 Signal(s) : Signal #1: ECD1A.ch Signal #2: ECD2B.ch
 Acq On : 20 Feb 2024 11:31
 Operator : AR\AJ
 Sample : PEM110
 Misc :
 ALS Vial : 3 Sample Multiplier: 1

Integration File signal 1: autoint1.e
 Integration File signal 2: autoint2.e
 Quant Time: Feb 20 20:36:17 2024
 Quant Method : Z:\pestpcbsrv\HPCHEM1\ECD_D\Method\PD021224CLP.M
 Quant Title : GC Extractables
 QLast Update : Mon Feb 12 17:06:05 2024
 Response via : Initial Calibration
 Integrator: ChemStation

Volume Inj. : 1 µl
 Signal #1 Phase : ZB-MR1 Signal #2 Phase: ZB-MR2
 Signal #1 Info : 30M x 0.32mm x0.5 Signal #2 Info : 30M x 0.32mm x 0.25µm

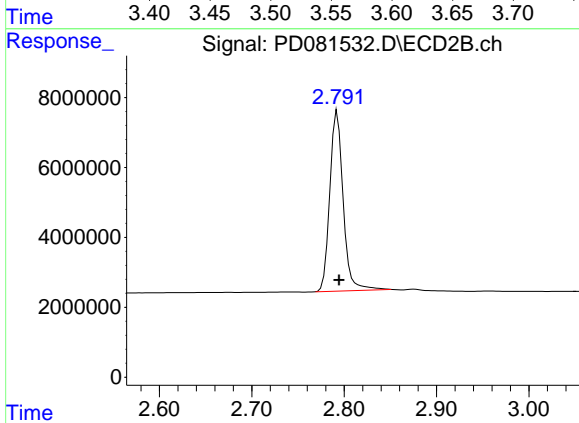




#1 Tetrachloro-m-xylene

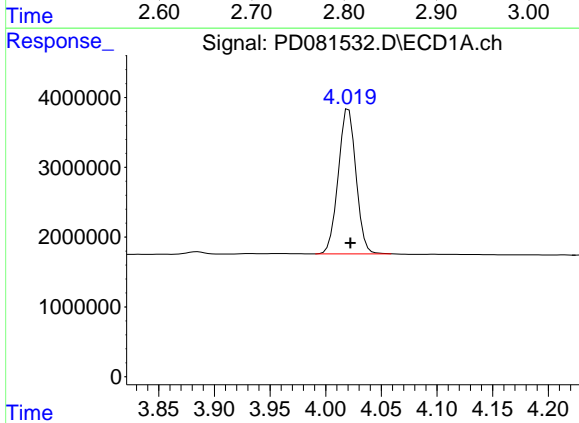
R.T.: 3.564 min
 Delta R.T.: -0.002 min
 Response: 29377618
 Conc: 21.49 ng/ml

Instrument :
 ECD_D
 ClientSampleId :
 PEM151



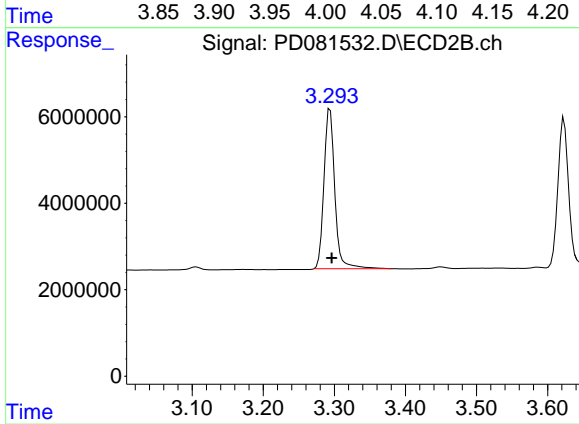
#1 Tetrachloro-m-xylene

R.T.: 2.793 min
 Delta R.T.: -0.002 min
 Response: 52012026
 Conc: 21.22 ng/ml



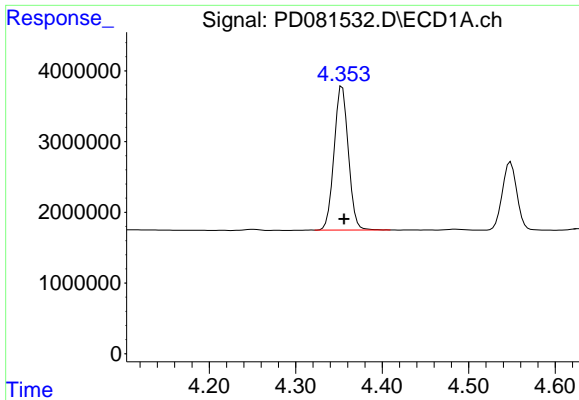
#2 alpha-BHC

R.T.: 4.021 min
 Delta R.T.: -0.002 min
 Response: 23016450
 Conc: 9.86 ng/ml



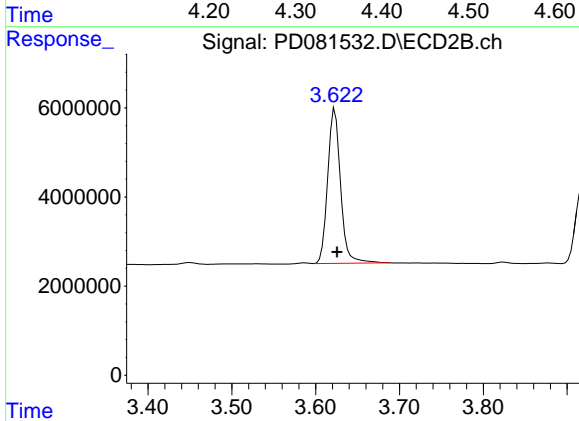
#2 alpha-BHC

R.T.: 3.294 min
 Delta R.T.: -0.002 min
 Response: 39254991
 Conc: 10.21 ng/ml

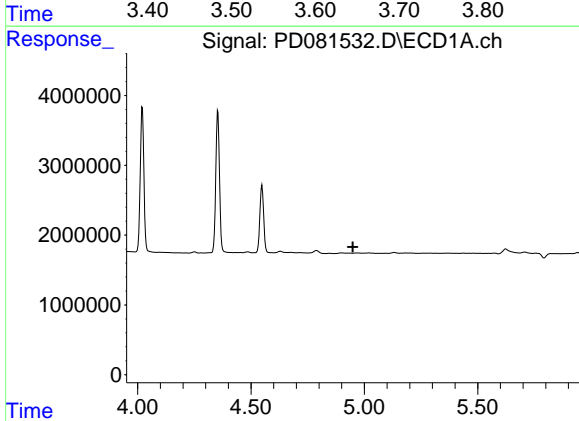


#3 gamma-BHC (Lindane)
 R.T.: 4.354 min
 Delta R.T.: -0.002 min
 Response: 23158361
 Conc: 10.02 ng/ml

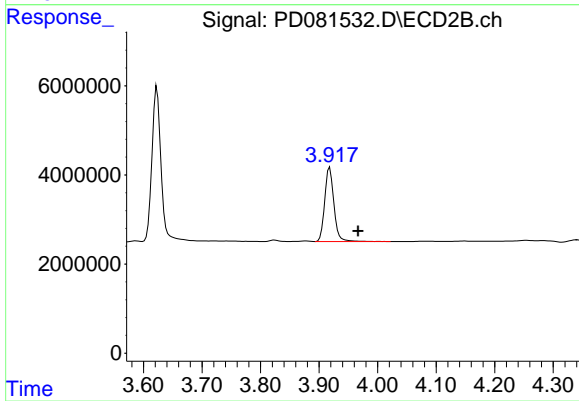
Instrument :
 ECD_D
 ClientSampleId :
 PEM151



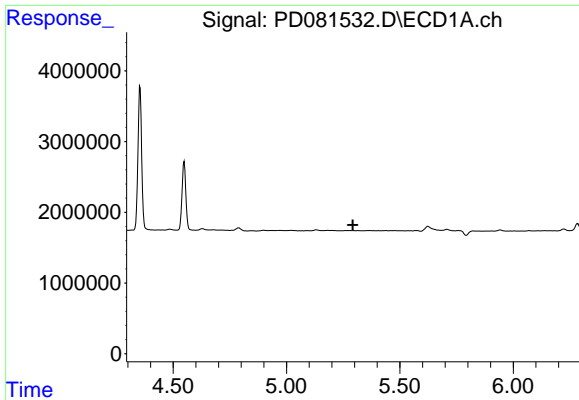
#3 gamma-BHC (Lindane)
 R.T.: 3.623 min
 Delta R.T.: -0.002 min
 Response: 37113247
 Conc: 10.25 ng/ml



#4 Heptachlor
 R.T.: 0.000 min
 Exp R.T. : 4.949 min
 Response: 0
 Conc: N.D.

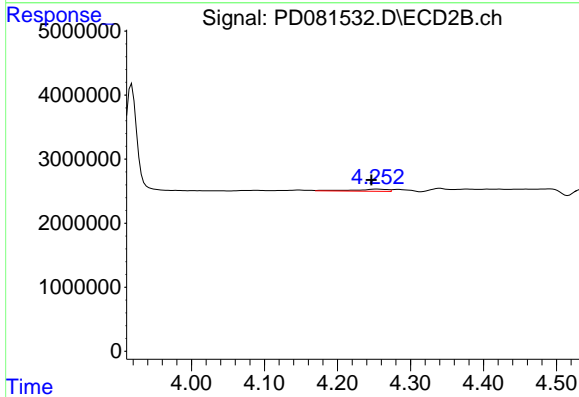


#4 Heptachlor
 R.T.: 3.918 min
 Delta R.T.: -0.048 min
 Response: 18175509
 Conc: 5.12 ng/ml

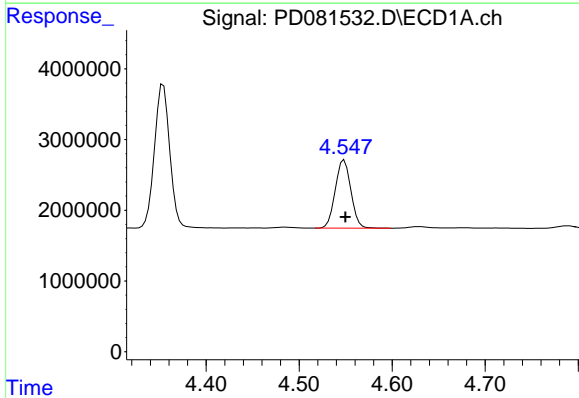


#5 Aldrin
 R.T.: 0.000 min
 Exp R.T.: 5.292 min
 Response: 0
 Conc: N.D.

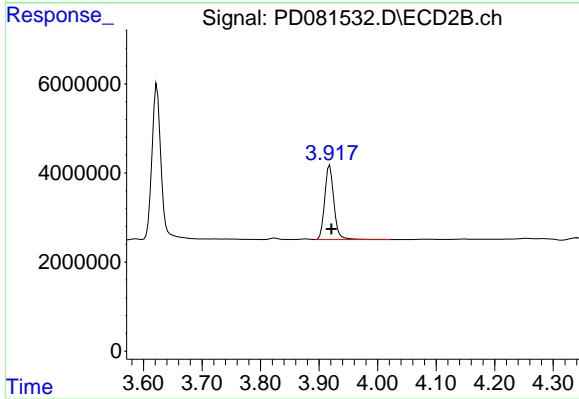
Instrument :
 ECD_D
 ClientSampleId :
 PEM151



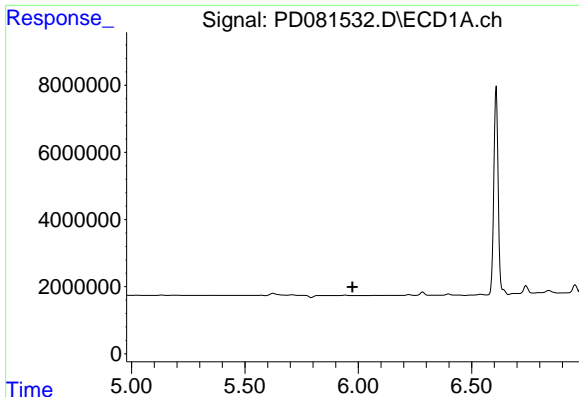
#5 Aldrin
 R.T.: 4.253 min
 Delta R.T.: 0.007 min
 Response: 1133180
 Conc: 0.33 ng/ml



#6 beta-BHC
 R.T.: 4.549 min
 Delta R.T.: -0.001 min
 Response: 11276188
 Conc: 10.85 ng/ml



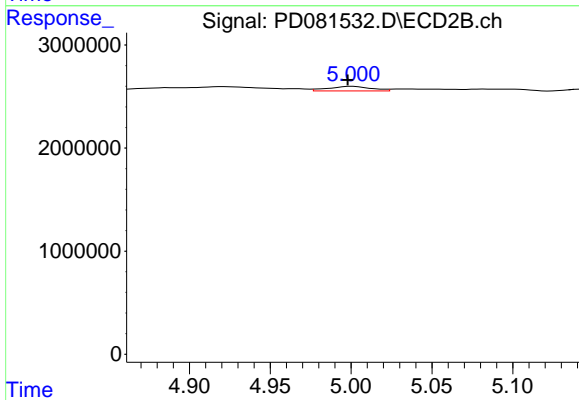
#6 beta-BHC
 R.T.: 3.918 min
 Delta R.T.: -0.003 min
 Response: 18175509
 Conc: 10.76 ng/ml



#10 trans-Chlordane

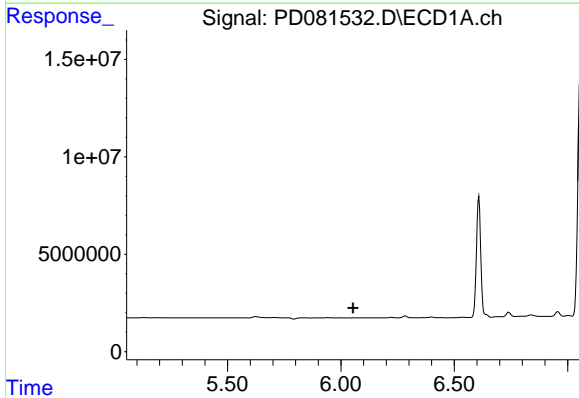
R.T.: 0.000 min
 Exp R.T. : 5.975 min
 Response: 0
 Conc: N.D.

Instrument :
 ECD_D
 ClientSampleId :
 PEM151



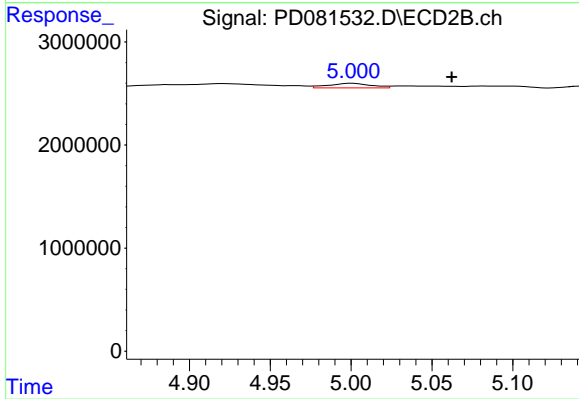
#10 trans-Chlordane

R.T.: 5.001 min
 Delta R.T.: 0.003 min
 Response: 812686
 Conc: 0.26 ng/ml



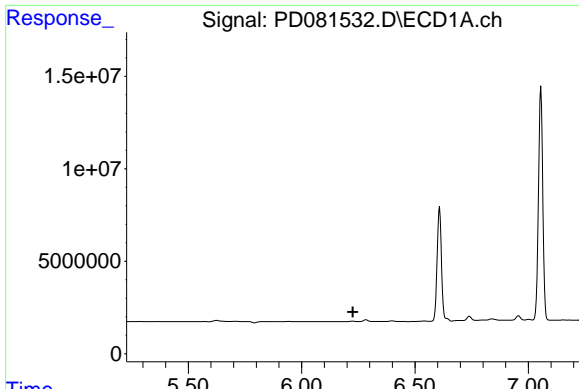
#11 cis-Chlordane

R.T.: 0.000 min
 Exp R.T. : 6.054 min
 Response: 0
 Conc: N.D.



#11 cis-Chlordane

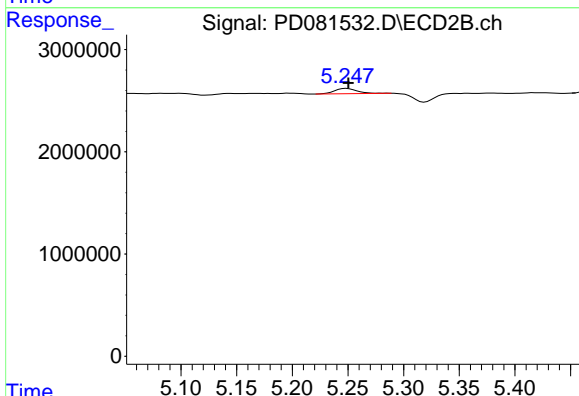
R.T.: 5.001 min
 Delta R.T.: -0.061 min
 Response: 812686
 Conc: 0.25 ng/ml



#12 4,4'-DDE

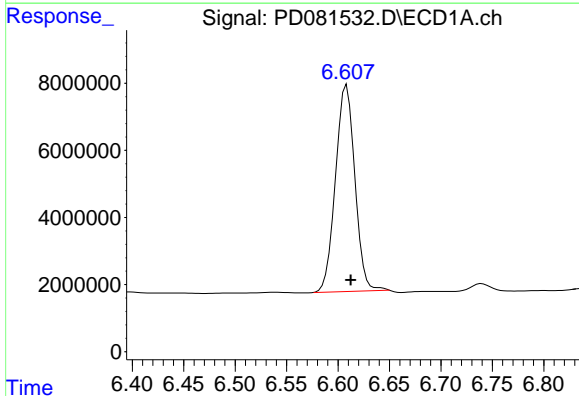
R.T.: 0.000 min
 Exp R.T.: 6.225 min
 Response: 0
 Conc: N.D.

Instrument :
 ECD_D
 ClientSampleId :
 PEM151



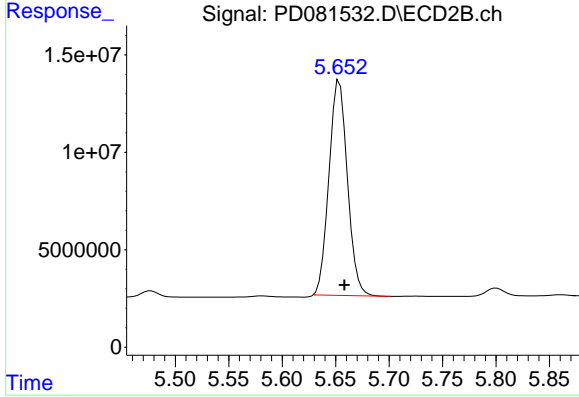
#12 4,4'-DDE

R.T.: 5.249 min
 Delta R.T.: -0.002 min
 Response: 752330
 Conc: 0.25 ng/ml



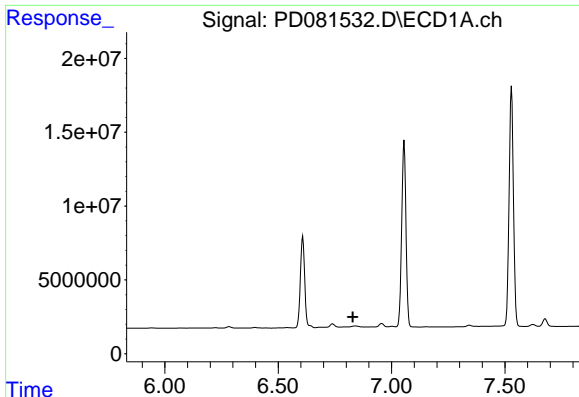
#14 Endrin

R.T.: 6.608 min
 Delta R.T.: -0.004 min
 Response: 80852353
 Conc: 43.08 ng/ml



#14 Endrin

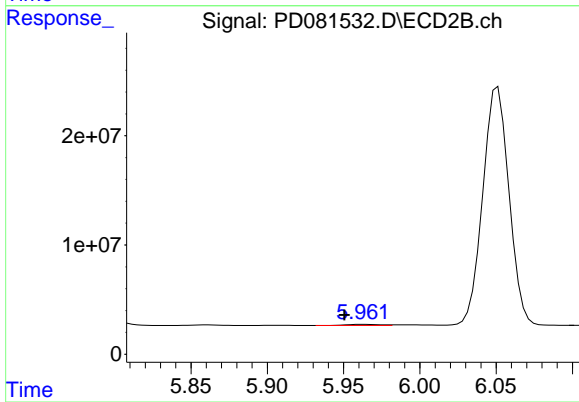
R.T.: 5.653 min
 Delta R.T.: -0.005 min
 Response: 132422266
 Conc: 46.09 ng/ml



#15 Endosulfan II

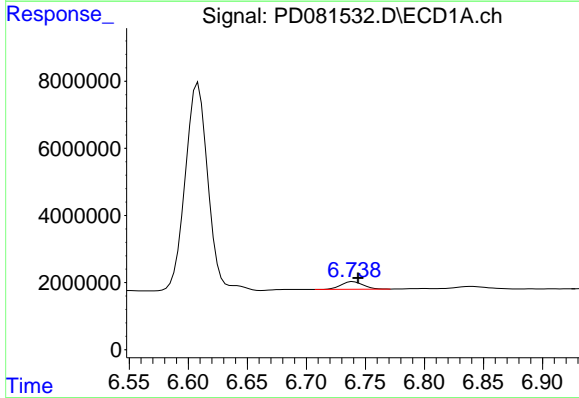
R.T.: 0.000 min
 Exp R.T.: 6.829 min
 Response: 0
 Conc: N.D.

Instrument :
 ECD_D
 ClientSampleId :
 PEM151



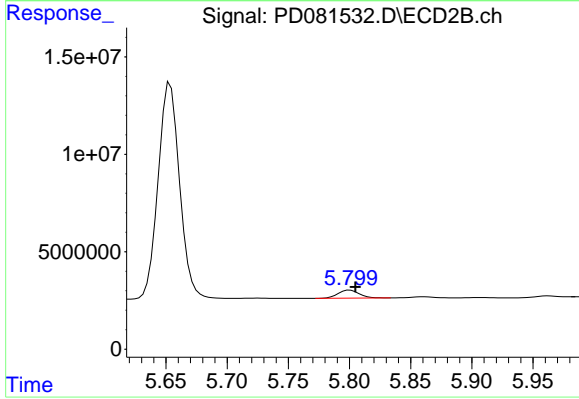
#15 Endosulfan II

R.T.: 5.963 min
 Delta R.T.: 0.012 min
 Response: 1440759
 Conc: 0.51 ng/ml



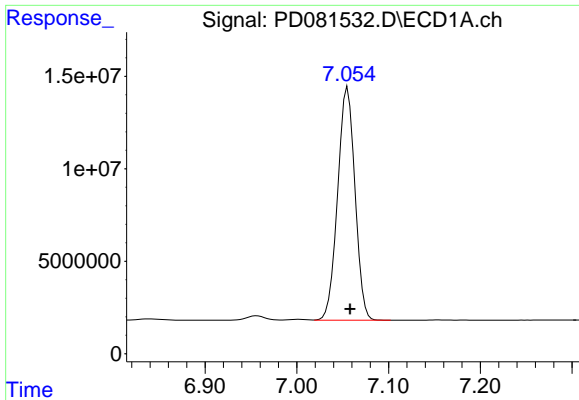
#16 4,4'-DDD

R.T.: 6.740 min
 Delta R.T.: -0.004 min
 Response: 2961346
 Conc: 1.78 ng/ml



#16 4,4'-DDD

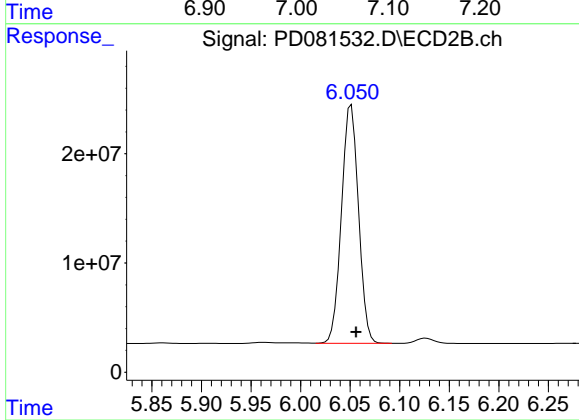
R.T.: 5.800 min
 Delta R.T.: -0.005 min
 Response: 4992019
 Conc: 1.98 ng/ml



#17 4,4'-DDT

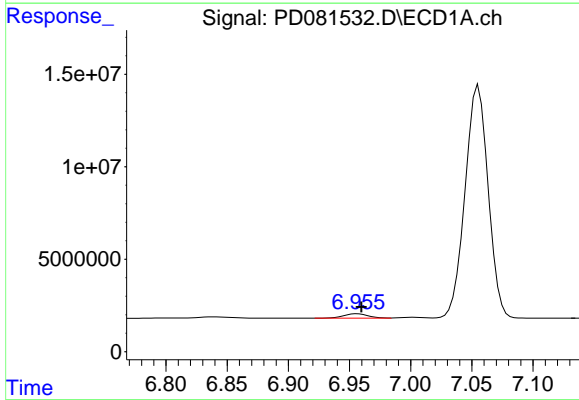
R.T.: 7.055 min
 Delta R.T.: -0.003 min
 Response: 165234215
 Conc: 95.11 ng/ml

Instrument :
 ECD_D
 ClientSampleId :
 PEM151



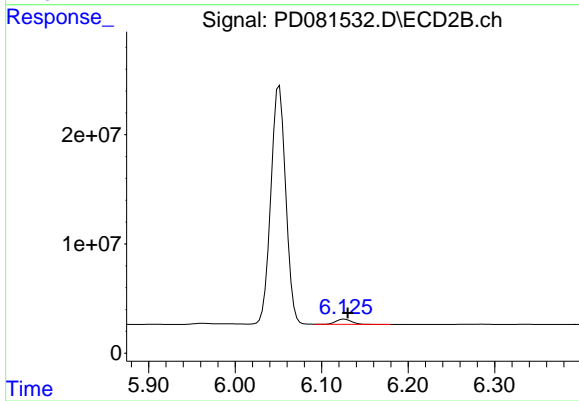
#17 4,4'-DDT

R.T.: 6.051 min
 Delta R.T.: -0.005 min
 Response: 261291252
 Conc: 101.18 ng/ml



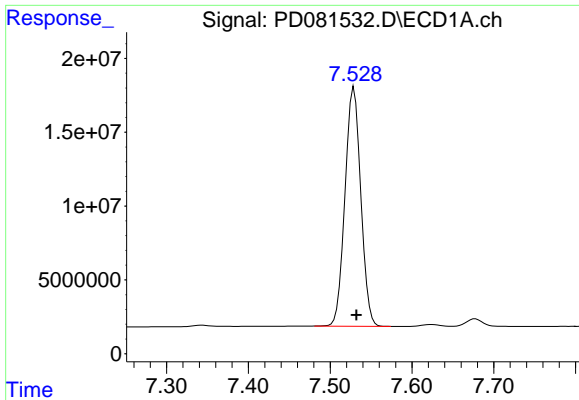
#18 Endrin aldehyde

R.T.: 6.956 min
 Delta R.T.: -0.003 min
 Response: 3279327
 Conc: 2.20 ng/ml



#18 Endrin aldehyde

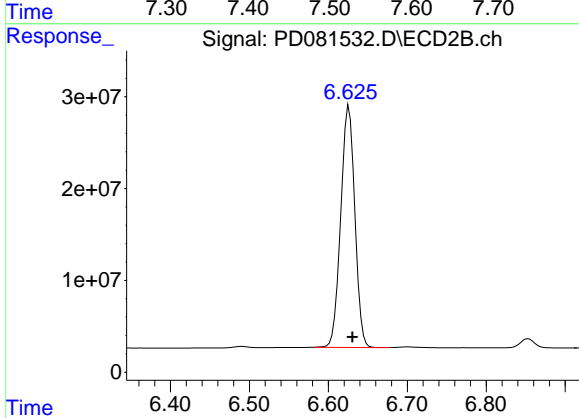
R.T.: 6.126 min
 Delta R.T.: -0.004 min
 Response: 5804425
 Conc: 2.68 ng/ml



#20 Methoxychlor

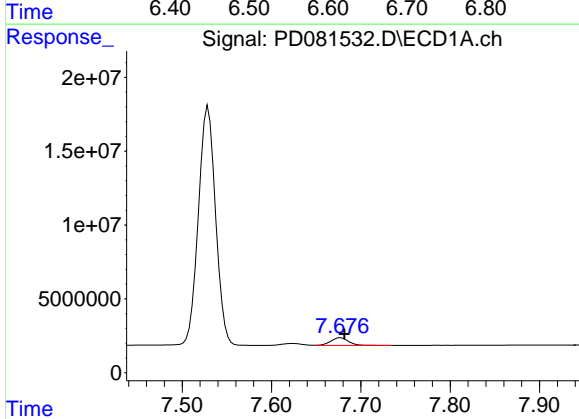
R.T.: 7.529 min
 Delta R.T.: -0.003 min
 Response: 215955607
 Conc: 235.43 ng/ml

Instrument :
 ECD_D
 ClientSampleId :
 PEM151



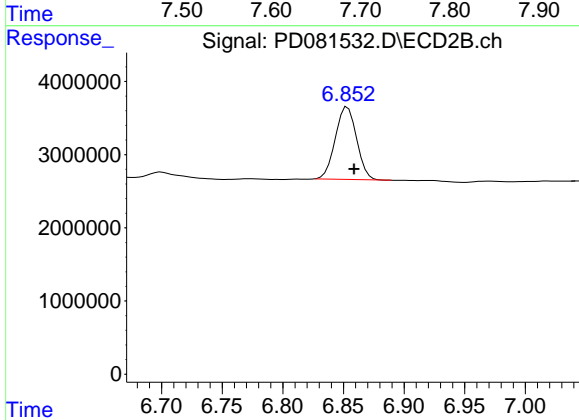
#20 Methoxychlor

R.T.: 6.626 min
 Delta R.T.: -0.004 min
 Response: 325840756
 Conc: 243.88 ng/ml



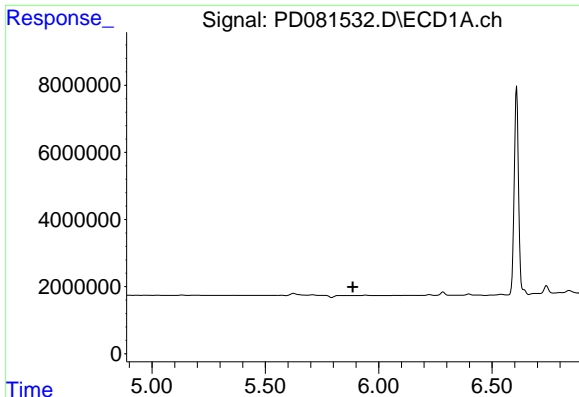
#21 Endrin ketone

R.T.: 7.678 min
 Delta R.T.: -0.004 min
 Response: 7062920
 Conc: 3.65 ng/ml



#21 Endrin ketone

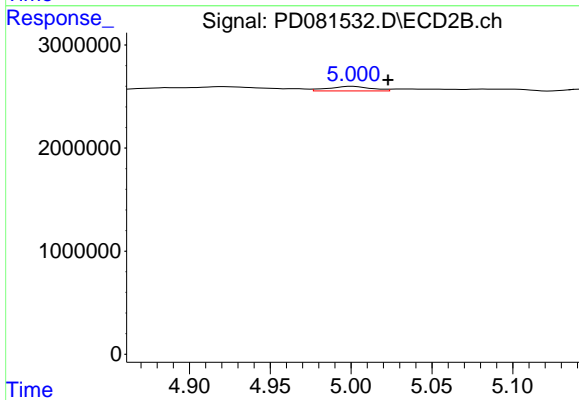
R.T.: 6.853 min
 Delta R.T.: -0.005 min
 Response: 12118188
 Conc: 4.04 ng/ml



#22 Toxaphene-1

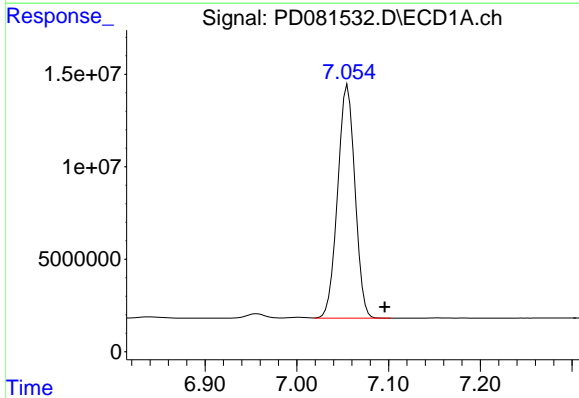
R.T.: 0.000 min
 Exp R.T.: 5.886 min
 Response: 0
 Conc: N.D.

Instrument :
 ECD_D
 ClientSampleId :
 PEM151



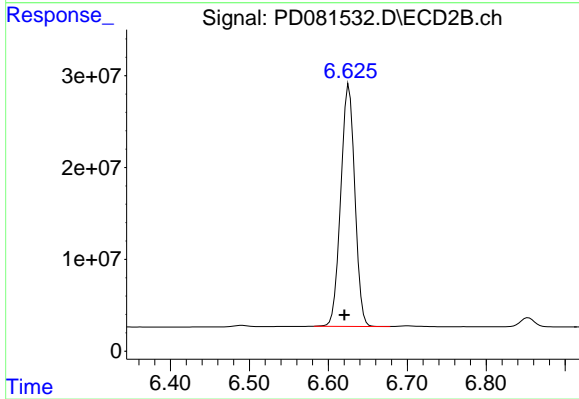
#22 Toxaphene-1

R.T.: 5.001 min
 Delta R.T.: -0.022 min
 Response: 812686
 Conc: 49.64 ng/ml



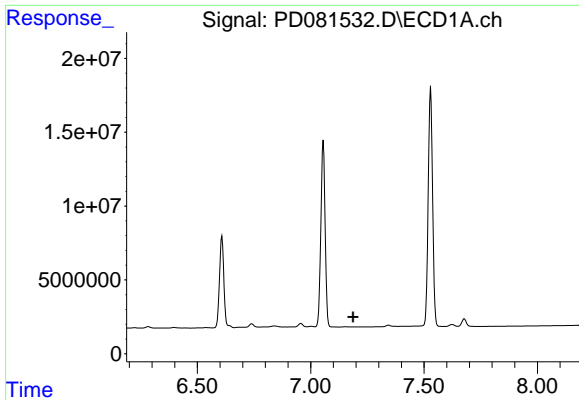
#24 Toxaphene-3

R.T.: 7.055 min
 Delta R.T.: -0.040 min
 Response: 165234215
 Conc: 3124.42 ng/ml



#24 Toxaphene-3

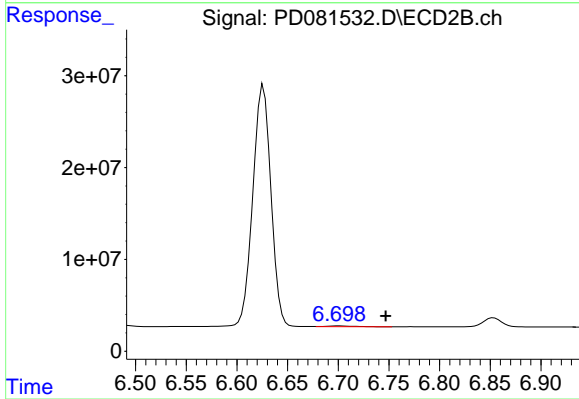
R.T.: 6.626 min
 Delta R.T.: 0.006 min
 Response: 325840756
 Conc: 5566.91 ng/ml



#25 Toxaphene-4

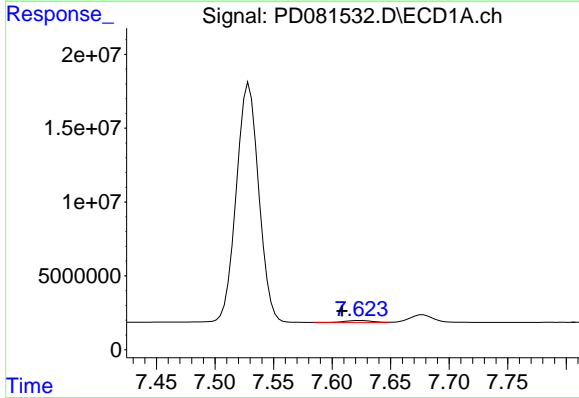
R.T.: 0.000 min
 Exp R.T.: 7.187 min
 Response: 0
 Conc: N.D.

Instrument :
 ECD_D
 ClientSampleId :
 PEM151



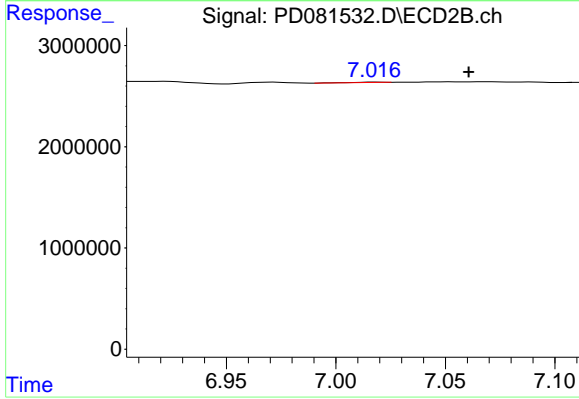
#25 Toxaphene-4

R.T.: 6.700 min
 Delta R.T.: -0.047 min
 Response: 1355491
 Conc: 17.03 ng/ml



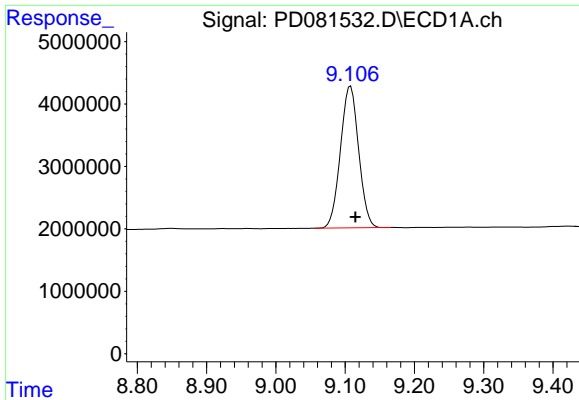
#26 Toxaphene-5

R.T.: 7.624 min
 Delta R.T.: 0.016 min
 Response: 2002227
 Conc: 67.51 ng/ml



#26 Toxaphene-5

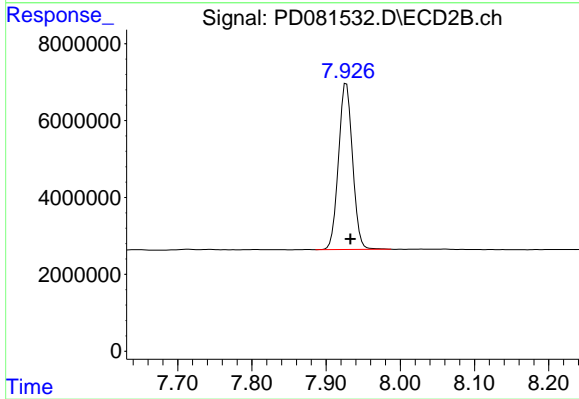
R.T.: 7.018 min
 Delta R.T.: -0.043 min
 Response: 31420
 Conc: 0.97 ng/ml



#27 Decachlorobiphenyl

R.T.: 9.108 min
Delta R.T.: -0.007 min
Response: 41380121
Conc: 21.45 ng/ml

Instrument :
ECD_D
ClientSampleId :
PEM151



#27 Decachlorobiphenyl

R.T.: 7.927 min
Delta R.T.: -0.005 min
Response: 56912219
Conc: 22.94 ng/ml