

Data Path : Z:\pestpcbsrv\HPCHEM1\ECD\_D\Data\PD022324\  
 Data File : PD081588.D  
 Signal(s) : Signal #1: ECD1A.ch Signal #2: ECD2B.ch  
 Acq On : 21 Feb 2024 13:45  
 Operator : AR\AJ  
 Sample : INDB315  
 Misc :  
 ALS Vial : 21 Sample Multiplier: 1

**Instrument :**  
 ECD\_D  
**ClientSampleId :**  
 INDB3119

**Manual Integrations**  
**APPROVED**  
 Reviewed By :Abdul Mirza 02/22/2024  
 Supervised By :Ankita Jodhani 02/22/2024

Integration File signal 1: autoint1.e  
 Integration File signal 2: autoint2.e  
 Quant Time: Feb 21 22:02:34 2024  
 Quant Method : Z:\pestpcbsrv\HPCHEM1\ECD\_D\Method\PD021224CLP.M  
 Quant Title : GC Extractables  
 QLast Update : Mon Feb 12 17:06:05 2024  
 Response via : Initial Calibration  
 Integrator: ChemStation

Volume Inj. : 1 µl  
 Signal #1 Phase : ZB-MR2 Signal #2 Phase: ZB-MR2  
 Signal #1 Info : 30M x 0.32mm x0.5 Signal #2 Info : 30M x 0.32mm x 0.25µm

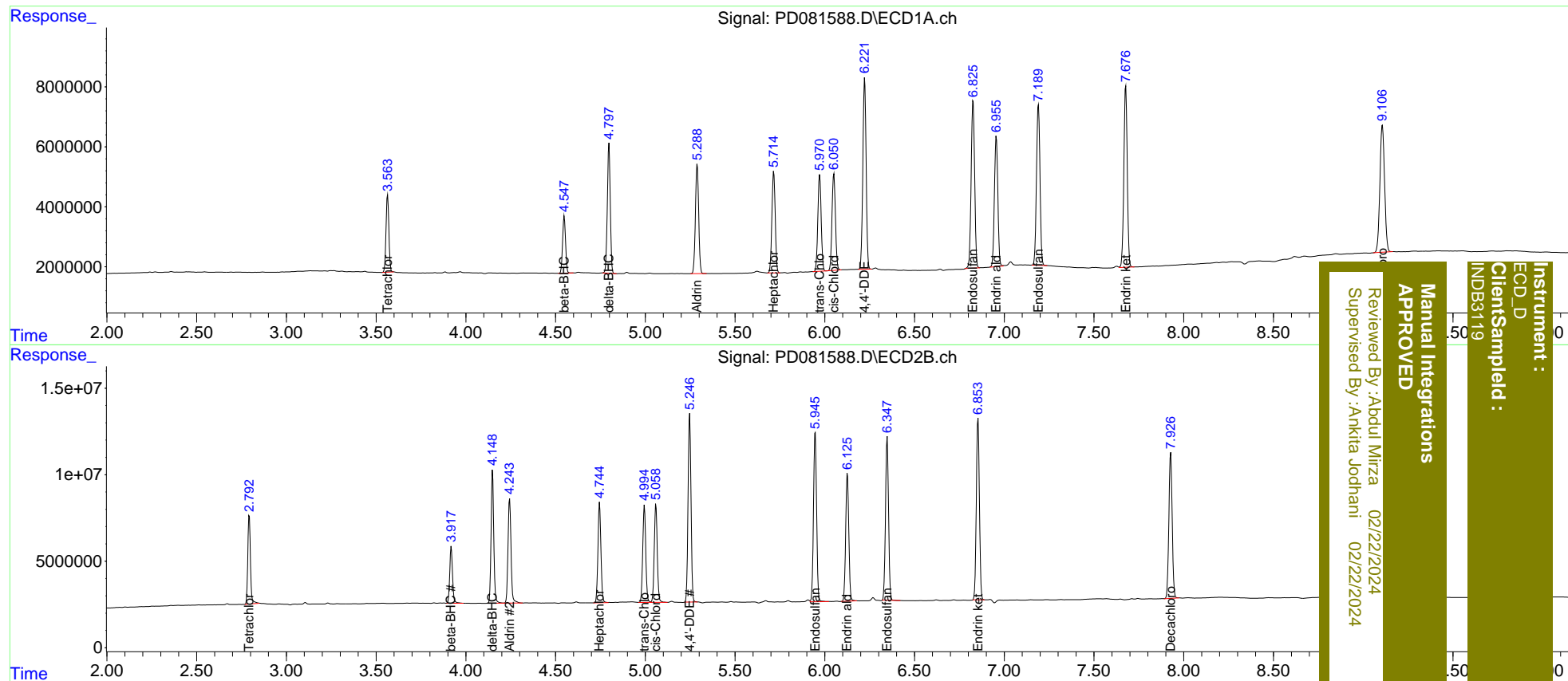
Compound	RT#1	RT#2	Resp#1	Resp#2	ng/ml	ng/ml
-----						
System Monitoring Compounds						
1) SA Tetrachlo...	3.564	2.793	28352397	52412124	20.738	21.379
27) SA Decachlor...	9.107	7.926	77456480	108.4E6	40.146	43.692m
Target Compounds						
5) MB Aldrin	5.289	4.244	46192773	70543856	19.536	20.827
6) B beta-BHC	4.549	3.919	21580534	35523306	20.766	21.024
7) B delta-BHC	4.798	4.149	49216997	79663527	20.780	21.274
8) B Heptachlo...	5.716	4.745	43418872	66634121	19.171	20.768
10) B trans-Chl...	5.972	4.995	41686063	64746778	19.040	20.749
11) B cis-Chlor...	6.051	5.059	42630427	66347278	18.928	20.711
12) B 4,4'-DDE	6.223	5.247	80996400	123.3E6	37.732	41.701
15) B Endosulfa...	6.825	5.947	75394043	117.7E6	39.055m	41.683
18) B Endrin al...	6.956	6.126	57630578	88910952	38.580	41.030
19) B Endosulfa...	7.191	6.348	72554843	111.0E6	39.629	41.360
21) B Endrin ke...	7.677	6.854	79851654	125.4E6	41.295	41.812
-----						

(f)=RT Delta > 1/2 Window (#)=Amounts differ by > 25% (m)=manual int.

Data Path : Z:\pestpcbsrv\HPCHEM1\ECD\_D\Data\PD022324\  
 Data File : PD081588.D  
 Signal(s) : Signal #1: ECD1A.ch Signal #2: ECD2B.ch  
 Acq On : 21 Feb 2024 13:45  
 Operator : AR\AJ  
 Sample : INDB315  
 Misc :  
 ALS Vial : 21 Sample Multiplier: 1

Integration File signal 1: autoint1.e  
 Integration File signal 2: autoint2.e  
 Quant Time: Feb 21 22:02:34 2024  
 Quant Method : Z:\pestpcbsrv\HPCHEM1\ECD\_D\Method\PD021224CLP.M  
 Quant Title : GC Extractables  
 QLast Update : Mon Feb 12 17:06:05 2024  
 Response via : Initial Calibration  
 Integrator: ChemStation

Volume Inj. : 1 µl  
 Signal #1 Phase : ZB-MR1 Signal #2 Phase: ZB-MR2  
 Signal #1 Info : 30M x 0.32mm x0.5 Signal #2 Info : 30M x 0.32mm x 0.25µm



Instrument : ECD\_D  
 Client/Sample : INDB315  
 Manual Integrations APPROVED  
 Reviewed By : Aboul Mirza 02/22/2024  
 Supervised By : Ankita Jodhani 02/22/2024