

Data Path : Z:\pestpcbsrv\HPCHEM1\ECD_D\Data\PD022324\
 Data File : PD081586.D
 Signal(s) : Signal #1: ECD1A.ch Signal #2: ECD2B.ch
 Acq On : 21 Feb 2024 13:19
 Operator : ARVAJ
 Sample : PIBLK197
 Misc :
 ALS Vial : 2 Sample Multiplier: 1

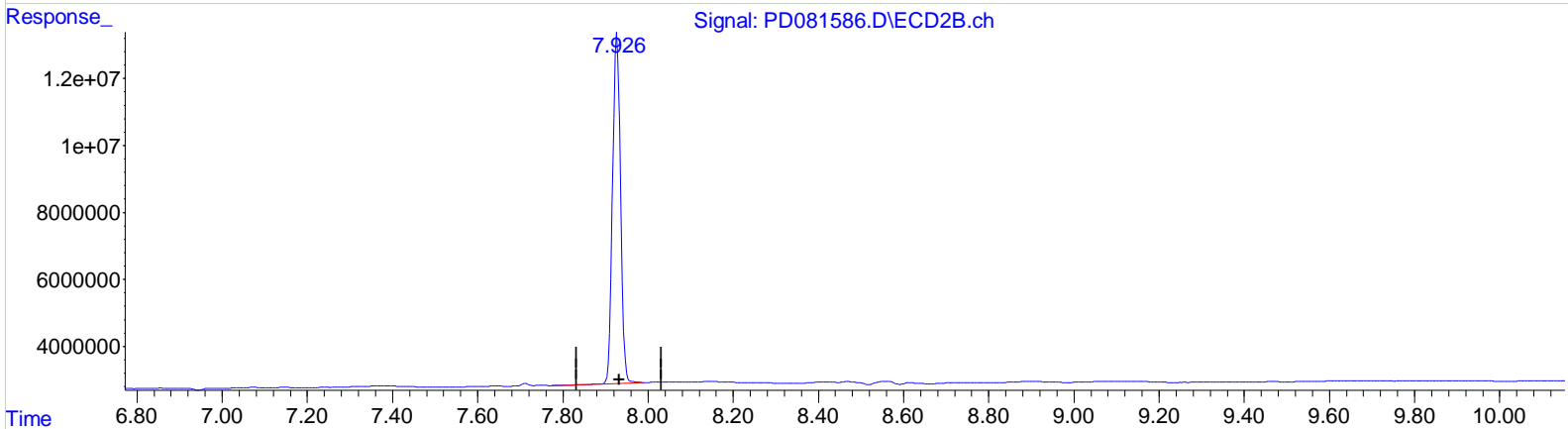
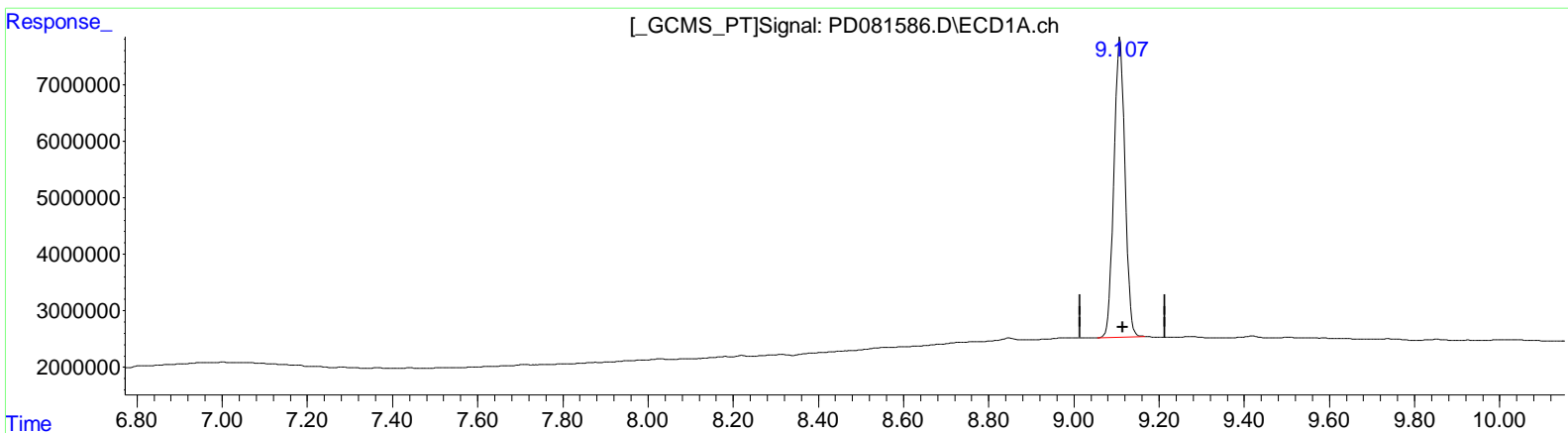
Instrument :
 ECD_D
Lab Sample ID :
 PIBLK197

Manual Integrations APPROVED

Reviewed By : Abdul Mirza 02/22/2024
 Supervised By : Ankita Jodhani 02/22/2024

Integration File signal 1: autoint1.e
 Integration File signal 2: autoint2.e
 Quant Time: Feb 21 22:02:06 2024
 Quant Method : Z:\pestpcbsrv\HPCHEM1\ECD_D\Method\PD021224CLP.M
 Quant Title : GC Extractables
 QLast Update : Mon Feb 12 17:06:05 2024
 Response via : Initial Calibration
 Integrator: ChemStation

Volume Inj. : 1 µl
 Signal #1 Phase : ZB-MR1 Signal #2 Phase: ZB-MR2
 Signal #1 Info : 30M x 0.32mm x 0.5 Signal #2 Info : 30M x 0.32mm x 0.25µm



QEdit

(27) Decachlorobiphenyl (SA)
 9.108min 49.305 ng/ml
 response 95126043

(27) Decachlorobiphenyl #2 (SA)
 7.927min 54.466 ng/ml
 response 135112849

(+) = Expected Retention Time

Data Path : Z:\pestpcbsrv\HPCHEM1\ECD_D\Data\PD022324\
 Data File : PD081586.D
 Signal(s) : Signal #1: ECD1A.ch Signal #2: ECD2B.ch
 Acq On : 21 Feb 2024 13:19
 Operator : ARVAJ
 Sample : PIBLK197
 Misc :
 ALS Vial : 2 Sample Multiplier: 1

Instrument :

ECD_D

LabSampleID :

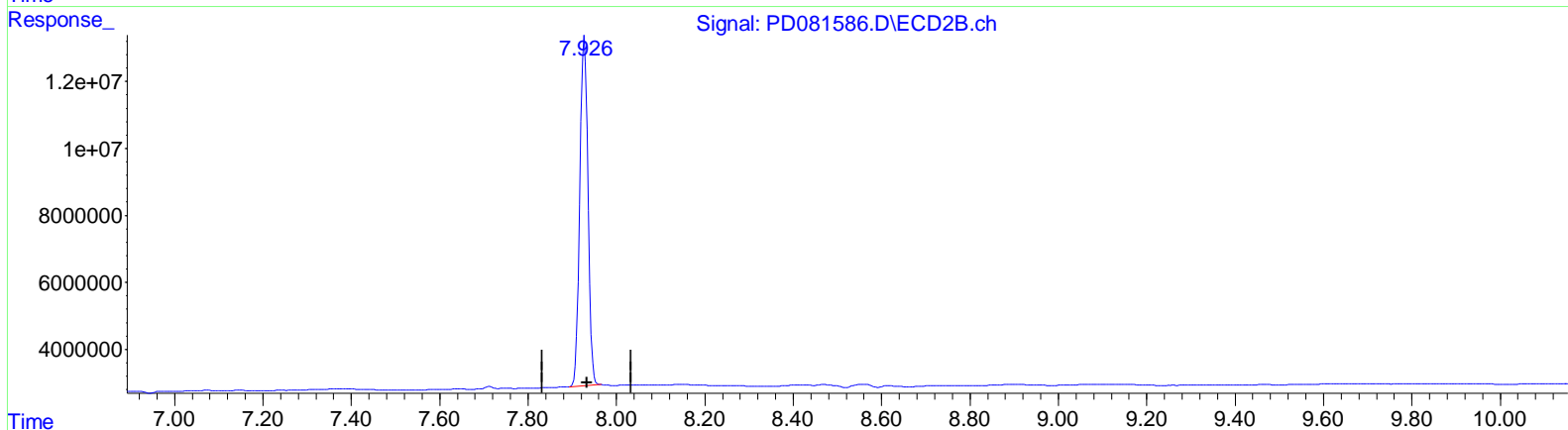
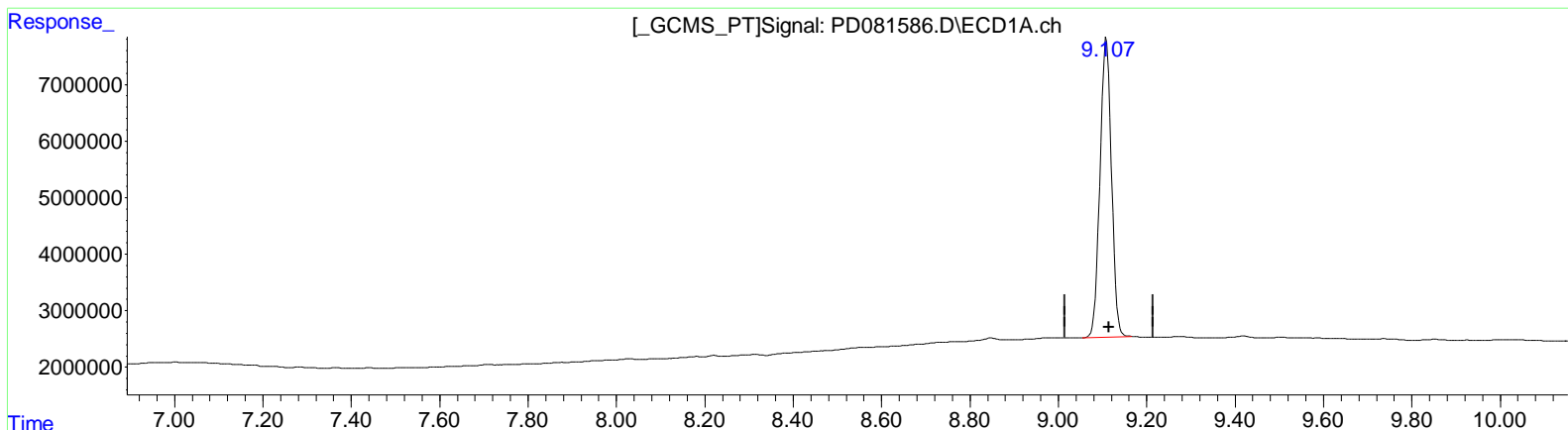
PIBLK197

Manual IntegrationsAPPROVED

Reviewed By :Abdul Mirza 02/22/2024
 Supervised By :Ankita Jodhani 02/22/2024

Integration File signal 1: autoint1.e
 Integration File signal 2: autoint2.e
 Quant Time: Feb 21 22:02:06 2024
 Quant Method : Z:\pestpcbsrv\HPCHEM1\ECD_D\Method\PD021224CLP.M
 Quant Title : GC Extractables
 QLast Update : Mon Feb 12 17:06:05 2024
 Response via : Initial Calibration
 Integrator: ChemStation

Volume Inj. : 1 µl
 Signal #1 Phase : ZB-MR1 Signal #2 Phase: ZB-MR2
 Signal #1 Info : 30M x 0.32mm x0.5 Signal #2 Info : 30M x 0.32mm x 0.25µm



QEdit

(27) Decachlorobiphenyl (SA)

9.108min 49.305 ng/ml

response 95126043

(27) Decachlorobiphenyl #2 (SA)

7.926min 54.158 ng/ml m

response 134349628