

Data Path : Z:\pestpcbsrv\HPCHEM1\ECD_D\Data\PD022624\
 Data File : PD081657.D
 Signal(s) : Signal #1: ECD1A.ch Signal #2: ECD2B.ch
 Acq On : 26 Feb 2024 16:09
 Operator : AR\AJ
 Sample : INDA318
 Misc :
 ALS Vial : 17 Sample Multiplier: 1

Instrument :
 ECD_D
 ClientSampleId :
 INDA3124

Integration File signal 1: autoint1.e
 Integration File signal 2: autoint2.e
 Quant Time: Feb 26 21:28:54 2024
 Quant Method : Z:\pestpcbsrv\HPCHEM1\ECD_D\Method\PD021224CLP.M
 Quant Title : GC Extractables
 QLast Update : Mon Feb 12 17:06:05 2024
 Response via : Initial Calibration
 Integrator: ChemStation

Volume Inj. : 1 µl
 Signal #1 Phase : ZB-MR2 Signal #2 Phase: ZB-MR2
 Signal #1 Info : 30M x 0.32mm x0.5 Signal #2 Info : 30M x 0.32mm x 0.25µm

Compound	RT#1	RT#2	Resp#1	Resp#2	ng/ml	ng/ml

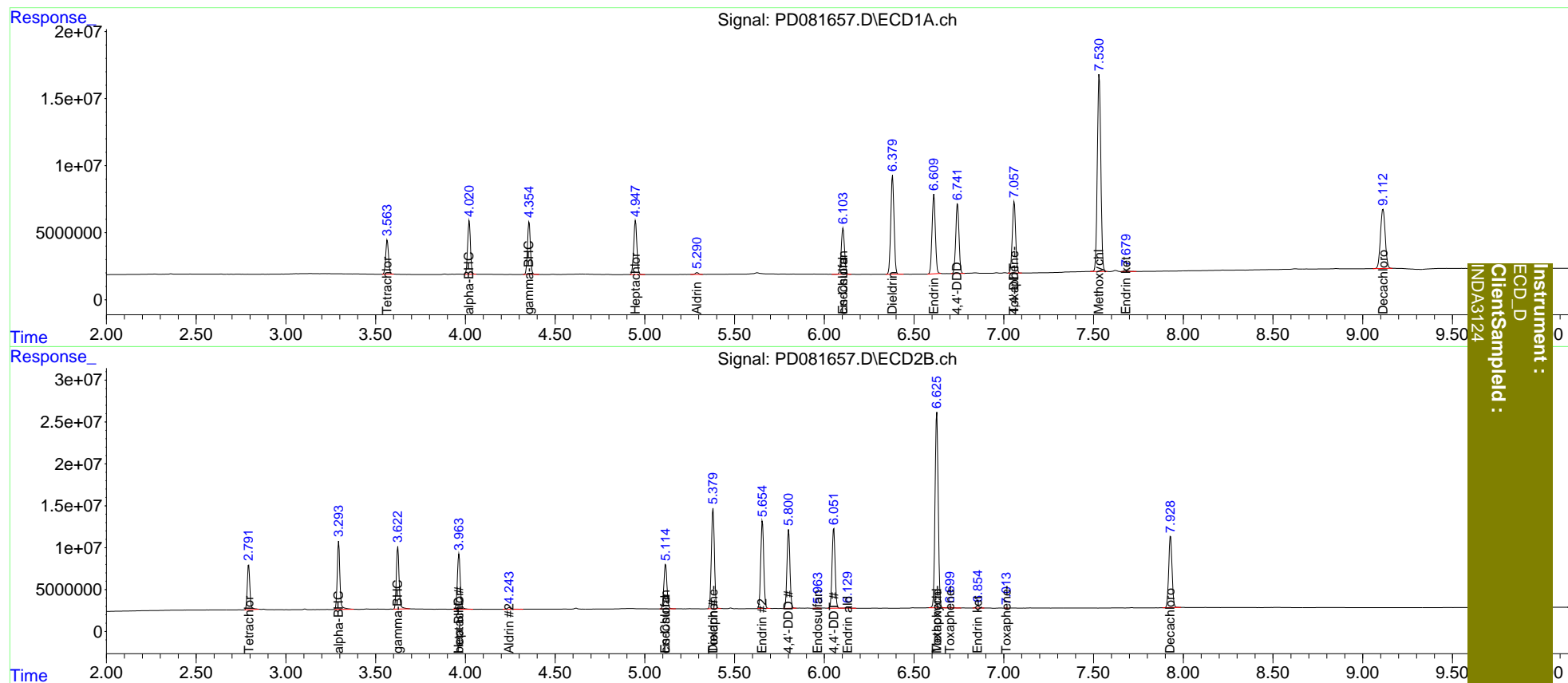
System Monitoring Compounds						
1) SA Tetrachlo...	3.565	2.793	27774389	54110239	20.316	22.072
27) SA Decachlor...	9.113	7.929	81599713	110.6E6	42.294	44.604
Target Compounds						
2) A alpha-BHC	4.022	3.294	43583114	83211107	18.663	21.642
3) MA gamma-BHC...	4.355	3.624	44333335	78348803	19.189	21.632
4) MA Heptachlor	4.948	3.964	48953409	74146219	19.960	20.902
5) MB Aldrin	5.291	4.244	1635060	2733243	0.691	0.807
6) B beta-BHC	0.000	3.964f	0	74146219	N.D.	43.881
9) A Endosulfan I	6.105	5.116	43565918	63514681	20.690	21.213
11) B cis-Chlor...	6.105f	5.116f	43565918	63514681	19.343	19.827
12) B 4,4'-DDE	0.000	5.251	0	204699	N.D.	<MDL
13) MA Dieldrin	6.380	5.380	93605177	140.0E6	42.157	42.635
14) MA Endrin	6.611	5.655	76001436	121.0E6	40.497	42.132
15) B Endosulfa...	0.000	5.964	0	662775	N.D.	0.235
16) A 4,4'-DDD	6.742	5.801	65427589	107.0E6	39.391	42.470
17) MA 4,4'-DDT	7.058	6.053	68594442	111.0E6	39.482	42.985
18) B Endrin al...	0.000	6.130	0	1959688	N.D.	0.904
20) A Methoxychlor	7.532	6.627	198.0E6	284.0E6	215.887	212.576
21) B Endrin ke...	7.681	6.856	1802574	2928437	0.932	0.977
23) Toxaphene-2	0.000	5.380	0	140.0E6	N.D.	8216.415
24) Toxaphene-3	7.058f	6.627	68594442	284.0E6	1297.055	4852.276 #
25) Toxaphene-4	0.000	6.701f	0	1108725	N.D.	13.933
26) Toxaphene-5	0.000	7.014f	0	23979	N.D.	0.739

(f)=RT Delta > 1/2 Window (#)=Amounts differ by > 25% (m)=manual int.

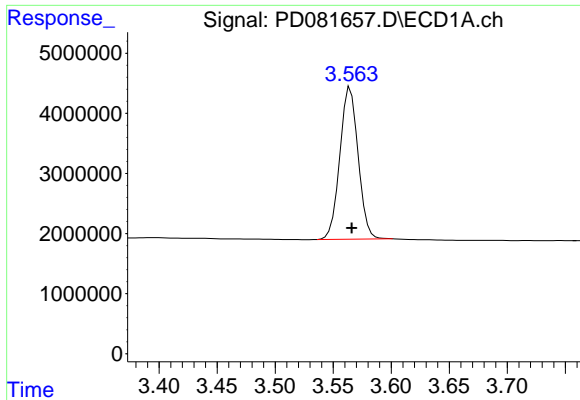
Data Path : Z:\pestpcbsrv\HPCHEM1\ECD_D\Data\PD022624\
 Data File : PD081657.D
 Signal(s) : Signal #1: ECD1A.ch Signal #2: ECD2B.ch
 Acq On : 26 Feb 2024 16:09
 Operator : AR\AJ
 Sample : INDA318
 Misc :
 ALS Vial : 17 Sample Multiplier: 1

Integration File signal 1: autoint1.e
 Integration File signal 2: autoint2.e
 Quant Time: Feb 26 21:28:54 2024
 Quant Method : Z:\pestpcbsrv\HPCHEM1\ECD_D\Method\PD021224CLP.M
 Quant Title : GC Extractables
 QLast Update : Mon Feb 12 17:06:05 2024
 Response via : Initial Calibration
 Integrator: ChemStation

Volume Inj. : 1 µl
 Signal #1 Phase : ZB-MR1 Signal #2 Phase: ZB-MR2
 Signal #1 Info : 30M x 0.32mm x0.5 Signal #2 Info : 30M x 0.32mm x 0.25µm



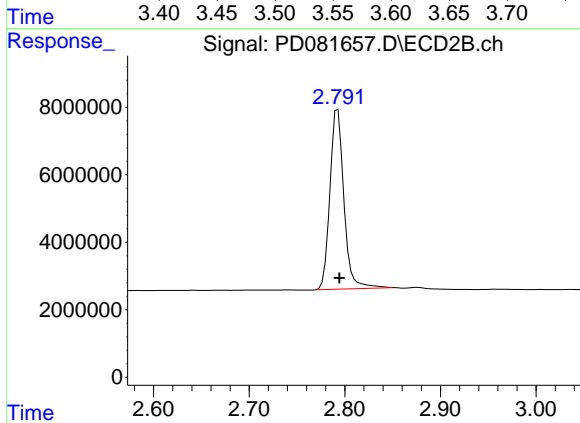
Instrument :
 ECD_D
 ClientSample :
 INDA3124



#1 Tetrachloro-m-xylene

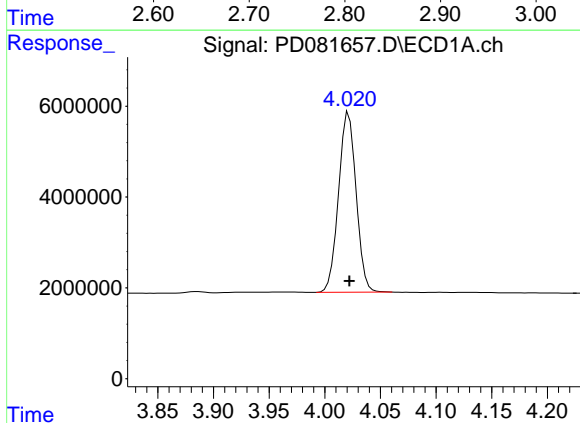
R.T.: 3.565 min
 Delta R.T.: -0.001 min
 Response: 27774389
 Conc: 20.32 ng/ml

Instrument :
 ECD_D
 ClientSampleId :
 INDA3124



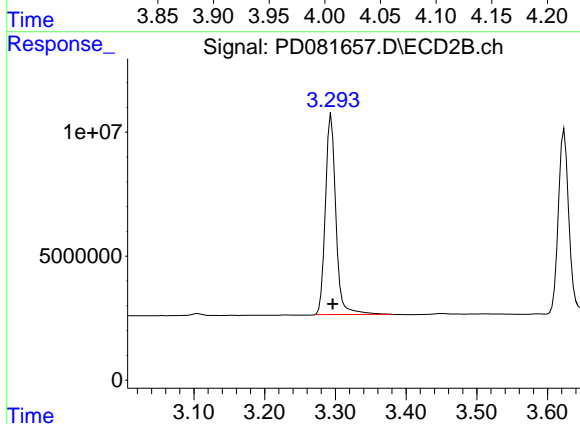
#1 Tetrachloro-m-xylene

R.T.: 2.793 min
 Delta R.T.: -0.002 min
 Response: 54110239
 Conc: 22.07 ng/ml



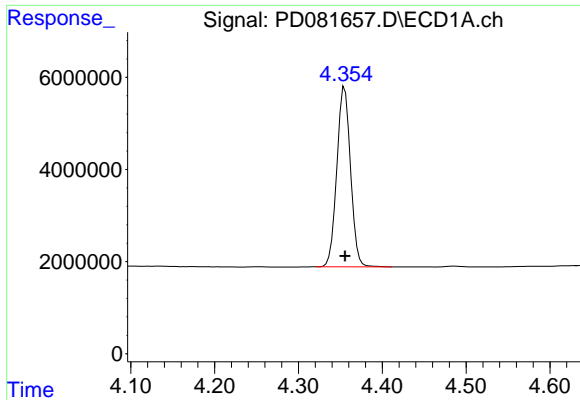
#2 alpha-BHC

R.T.: 4.022 min
 Delta R.T.: 0.000 min
 Response: 43583114
 Conc: 18.66 ng/ml



#2 alpha-BHC

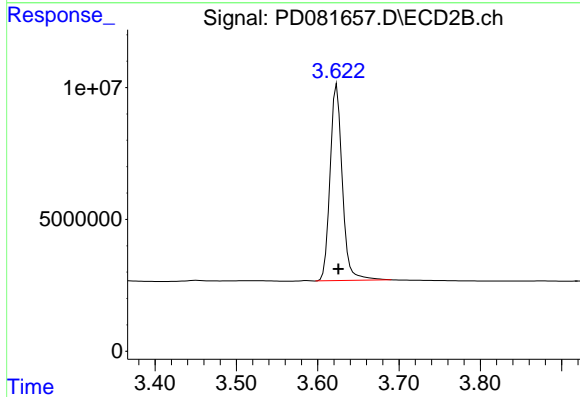
R.T.: 3.294 min
 Delta R.T.: -0.002 min
 Response: 83211107
 Conc: 21.64 ng/ml



#3 gamma-BHC (Lindane)

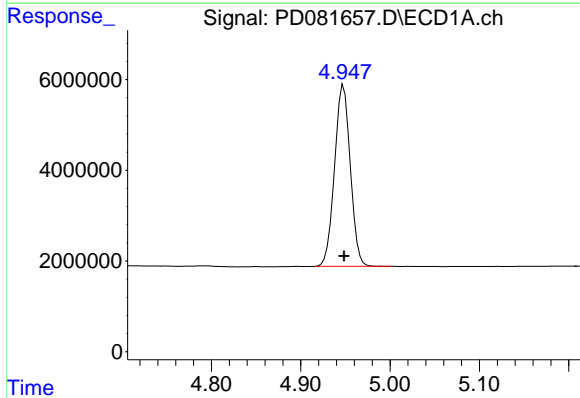
R.T.: 4.355 min
 Delta R.T.: 0.000 min
 Response: 44333335
 Conc: 19.19 ng/ml

Instrument :
 ECD_D
 ClientSampleId :
 INDA3124



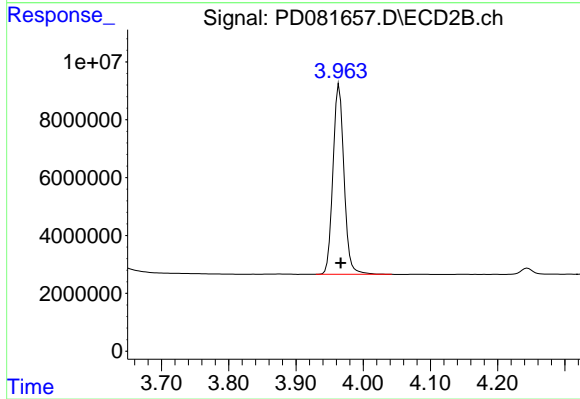
#3 gamma-BHC (Lindane)

R.T.: 3.624 min
 Delta R.T.: -0.002 min
 Response: 78348803
 Conc: 21.63 ng/ml



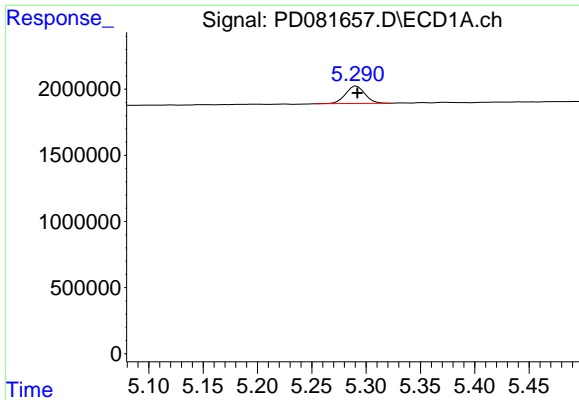
#4 Heptachlor

R.T.: 4.948 min
 Delta R.T.: 0.000 min
 Response: 48953409
 Conc: 19.96 ng/ml



#4 Heptachlor

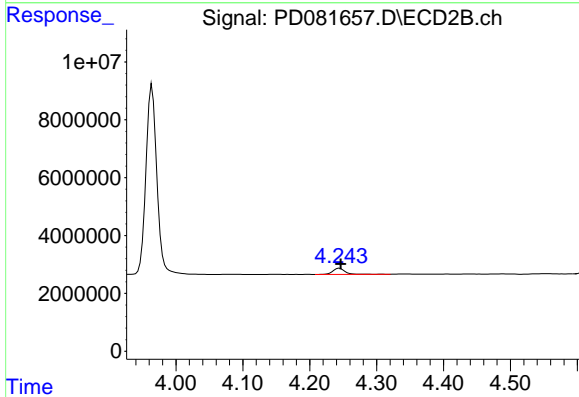
R.T.: 3.964 min
 Delta R.T.: -0.002 min
 Response: 74146219
 Conc: 20.90 ng/ml



#5 Aldrin

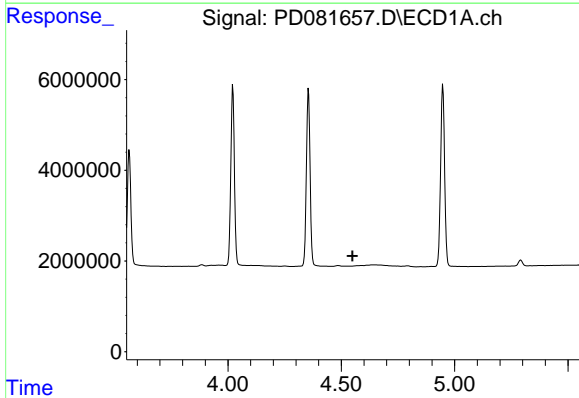
R.T.: 5.291 min
 Delta R.T.: 0.000 min
 Response: 1635060
 Conc: 0.69 ng/ml

Instrument :
 ECD_D
 ClientSampleId :
 INDA3124



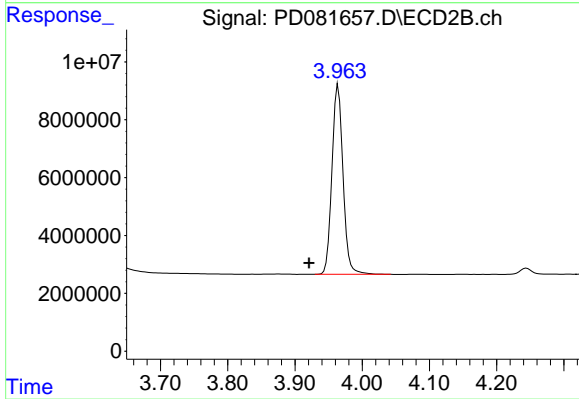
#5 Aldrin

R.T.: 4.244 min
 Delta R.T.: -0.002 min
 Response: 2733243
 Conc: 0.81 ng/ml



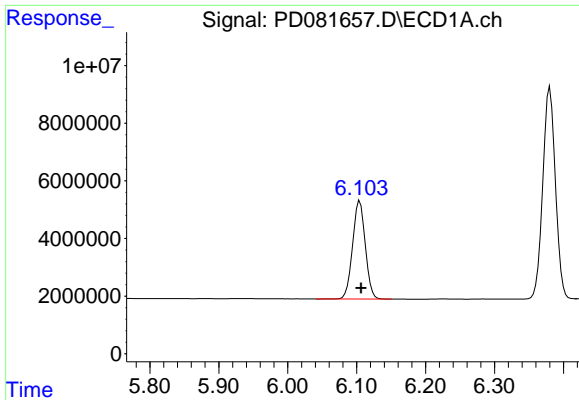
#6 beta-BHC

R.T.: 0.000 min
 Exp R.T. : 4.550 min
 Response: 0
 Conc: N.D.



#6 beta-BHC

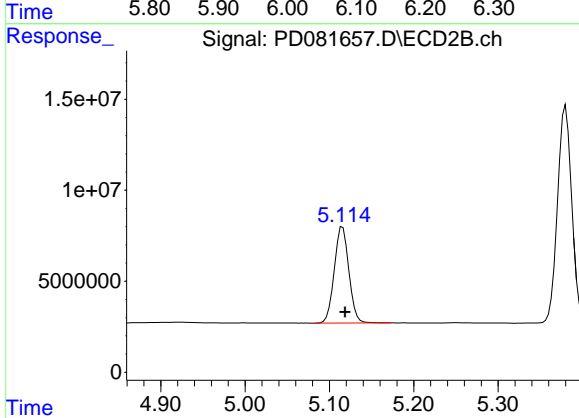
R.T.: 3.964 min
 Delta R.T.: 0.043 min
 Response: 74146219
 Conc: 43.88 ng/ml



#9 Endosulfan I

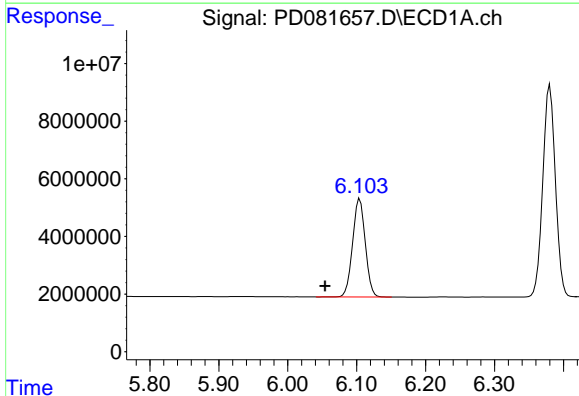
R.T.: 6.105 min
 Delta R.T.: -0.002 min
 Response: 43565918
 Conc: 20.69 ng/ml

Instrument :
 ECD_D
 ClientSampleId :
 INDA3124



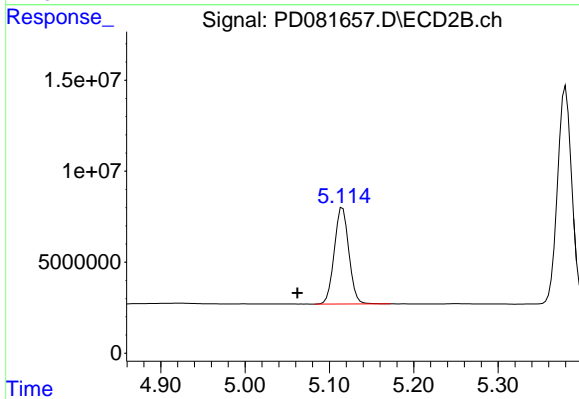
#9 Endosulfan I

R.T.: 5.116 min
 Delta R.T.: -0.003 min
 Response: 63514681
 Conc: 21.21 ng/ml



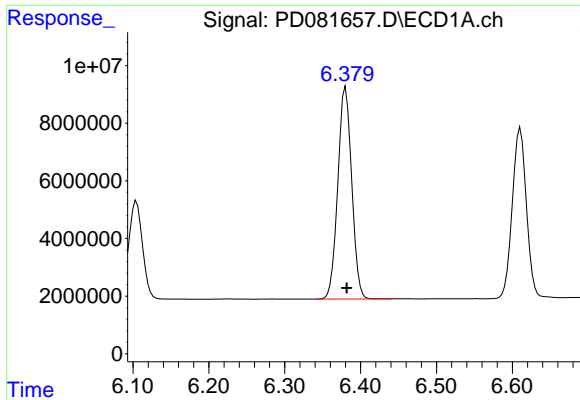
#11 cis-Chlordane

R.T.: 6.105 min
 Delta R.T.: 0.051 min
 Response: 43565918
 Conc: 19.34 ng/ml



#11 cis-Chlordane

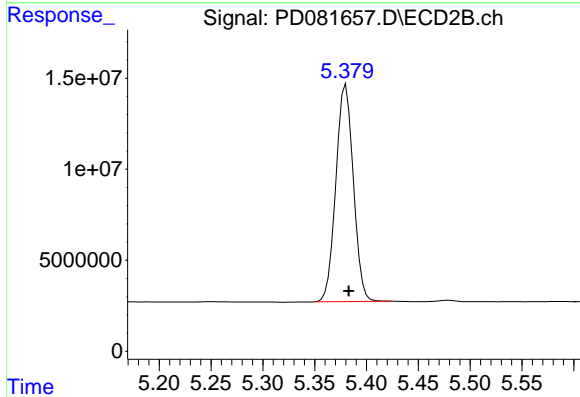
R.T.: 5.116 min
 Delta R.T.: 0.053 min
 Response: 63514681
 Conc: 19.83 ng/ml



#13 Dieldrin

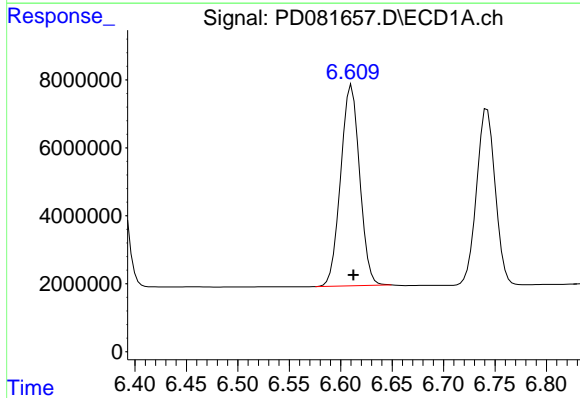
R.T.: 6.380 min
 Delta R.T.: -0.001 min
 Response: 93605177
 Conc: 42.16 ng/ml

Instrument :
 ECD_D
 ClientSampleId :
 INDA3124



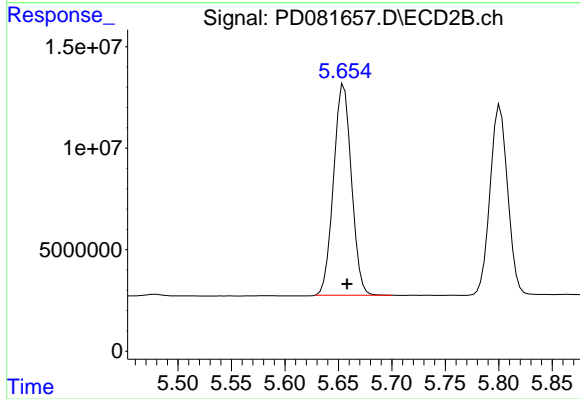
#13 Dieldrin

R.T.: 5.380 min
 Delta R.T.: -0.003 min
 Response: 140034873
 Conc: 42.64 ng/ml



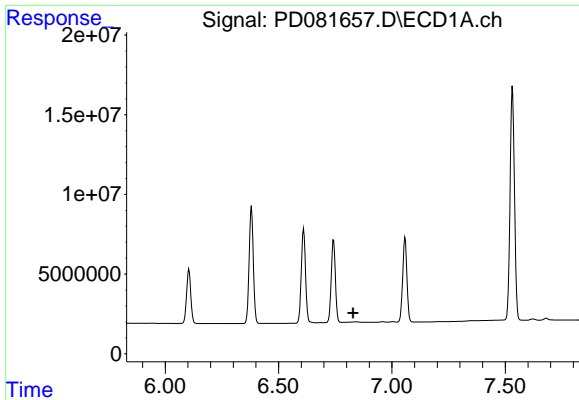
#14 Endrin

R.T.: 6.611 min
 Delta R.T.: -0.002 min
 Response: 76001436
 Conc: 40.50 ng/ml



#14 Endrin

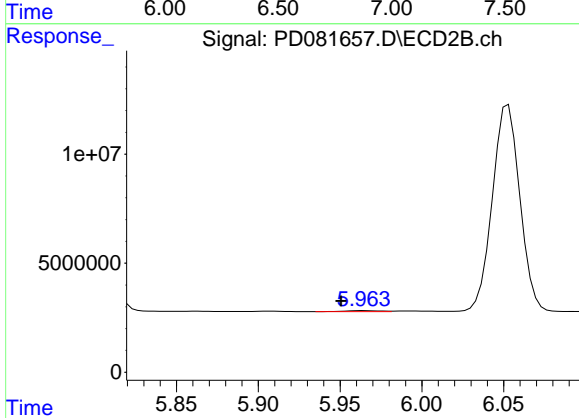
R.T.: 5.655 min
 Delta R.T.: -0.003 min
 Response: 121048260
 Conc: 42.13 ng/ml



#15 Endosulfan II

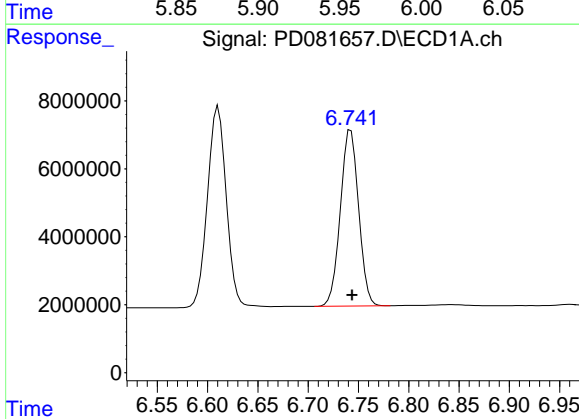
R.T.: 0.000 min
 Exp R.T.: 6.829 min
 Response: 0
 Conc: N.D.

Instrument : ECD_D
 ClientSampleId : INDA3124



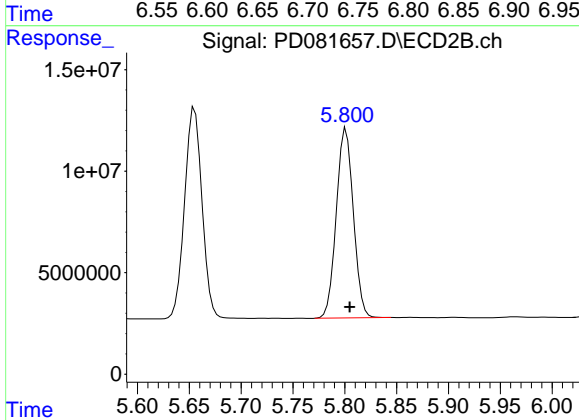
#15 Endosulfan II

R.T.: 5.964 min
 Delta R.T.: 0.014 min
 Response: 662775
 Conc: 0.23 ng/ml



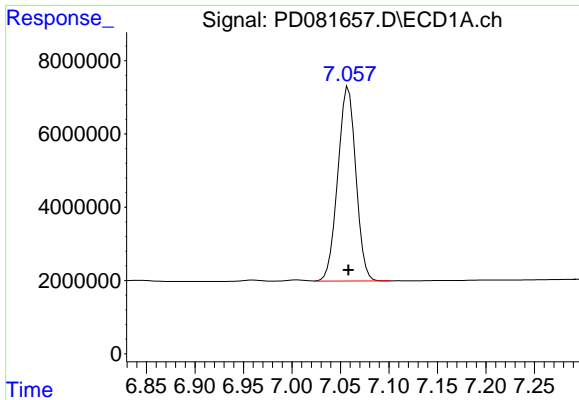
#16 4,4'-DDD

R.T.: 6.742 min
 Delta R.T.: -0.001 min
 Response: 65427589
 Conc: 39.39 ng/ml



#16 4,4'-DDD

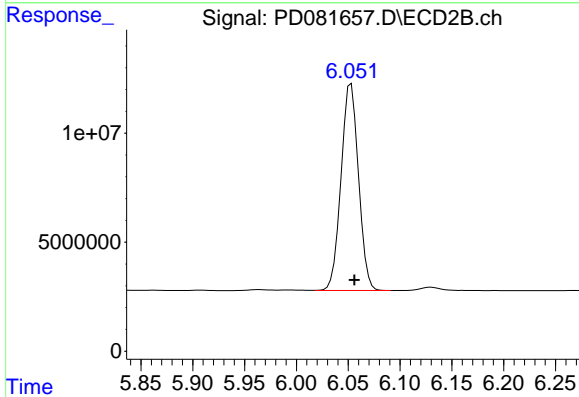
R.T.: 5.801 min
 Delta R.T.: -0.004 min
 Response: 107034176
 Conc: 42.47 ng/ml



#17 4,4'-DDT

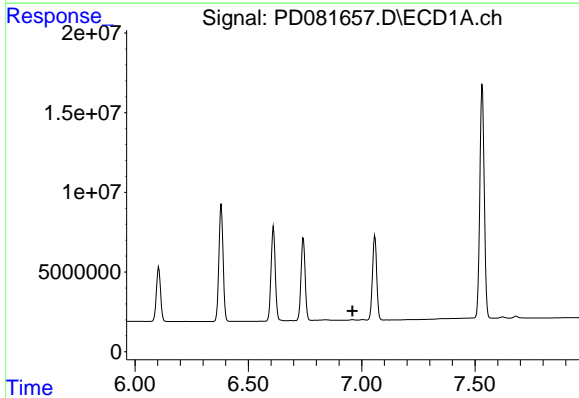
R.T.: 7.058 min
 Delta R.T.: 0.000 min
 Response: 68594442
 Conc: 39.48 ng/ml

Instrument :
 ECD_D
 ClientSampleId :
 INDA3124



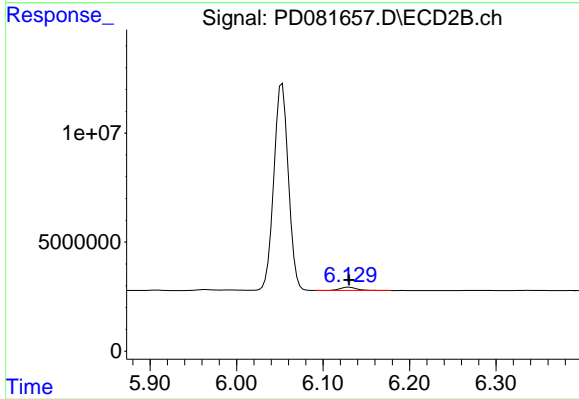
#17 4,4'-DDT

R.T.: 6.053 min
 Delta R.T.: -0.003 min
 Response: 111000900
 Conc: 42.98 ng/ml



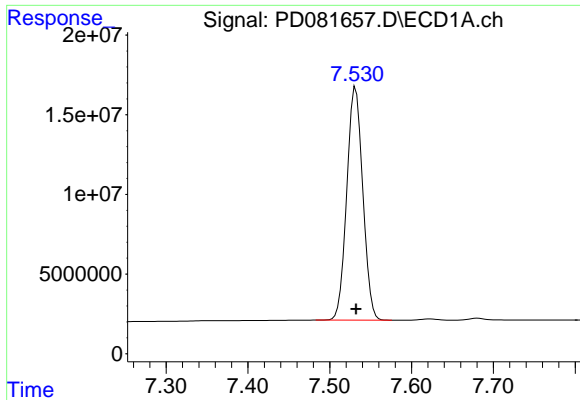
#18 Endrin aldehyde

R.T.: 0.000 min
 Exp R.T. : 6.960 min
 Response: 0
 Conc: N.D.



#18 Endrin aldehyde

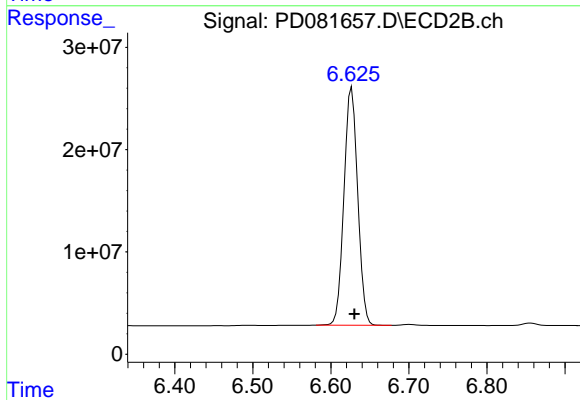
R.T.: 6.130 min
 Delta R.T.: 0.000 min
 Response: 1959688
 Conc: 0.90 ng/ml



#20 Methoxychlor

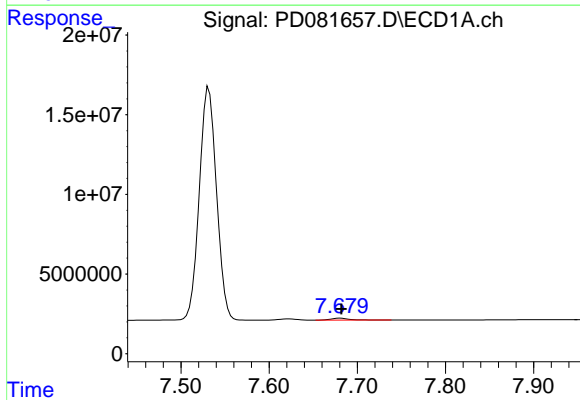
R.T.: 7.532 min
 Delta R.T.: 0.000 min
 Response: 198027915
 Conc: 215.89 ng/ml

Instrument :
 ECD_D
 ClientSampleId :
 INDA3124



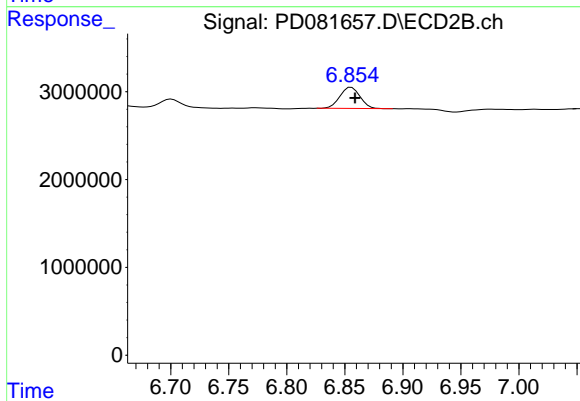
#20 Methoxychlor

R.T.: 6.627 min
 Delta R.T.: -0.004 min
 Response: 284012115
 Conc: 212.58 ng/ml



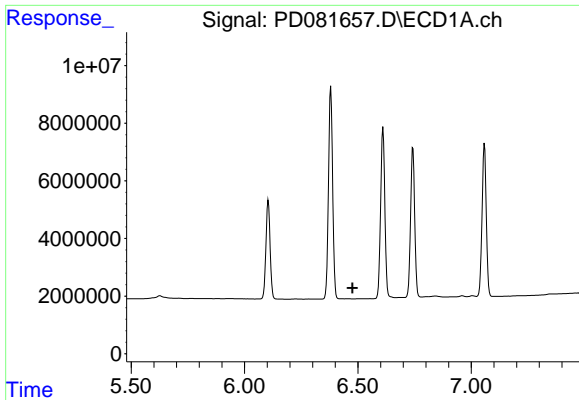
#21 Endrin ketone

R.T.: 7.681 min
 Delta R.T.: 0.000 min
 Response: 1802574
 Conc: 0.93 ng/ml



#21 Endrin ketone

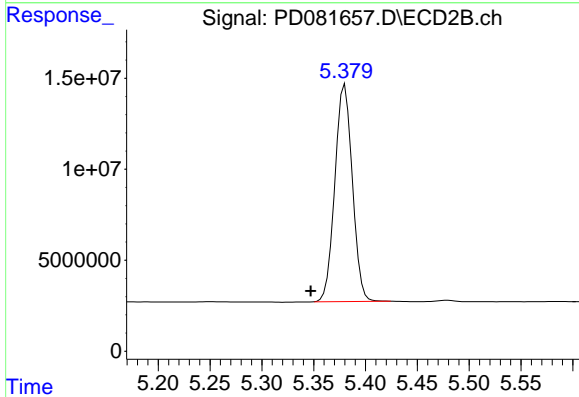
R.T.: 6.856 min
 Delta R.T.: -0.003 min
 Response: 2928437
 Conc: 0.98 ng/ml



#23 Toxaphene-2

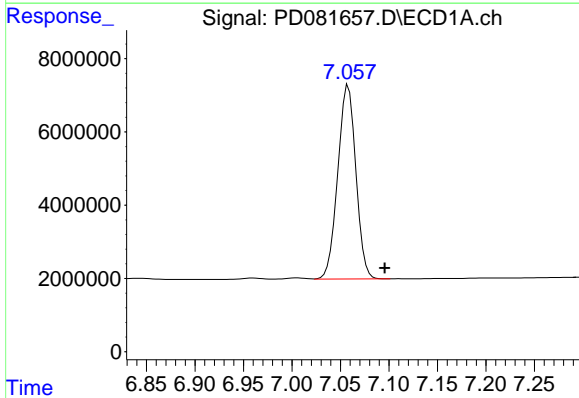
R.T.: 0.000 min
 Exp R.T.: 6.477 min
 Response: 0
 Conc: N.D.

Instrument :
 ECD_D
 ClientSampleId :
 INDA3124



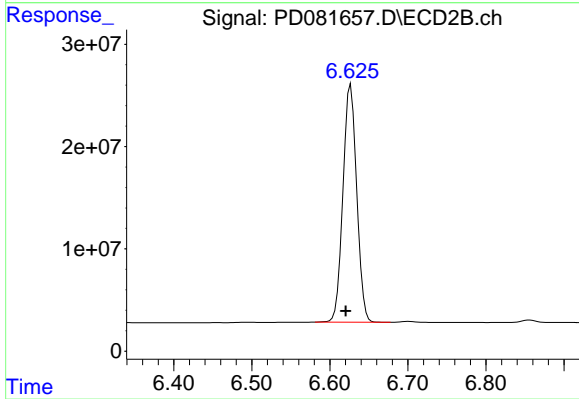
#23 Toxaphene-2

R.T.: 5.380 min
 Delta R.T.: 0.033 min
 Response: 140034873
 Conc: 8216.42 ng/ml



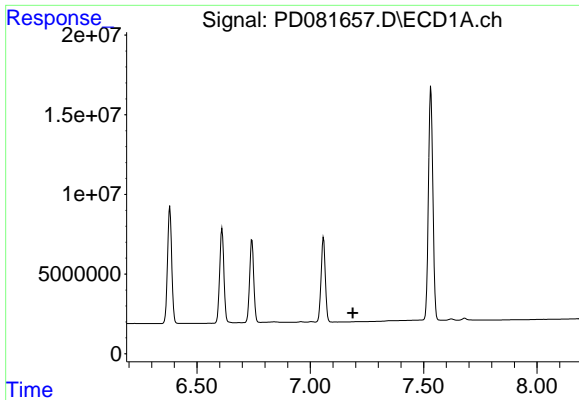
#24 Toxaphene-3

R.T.: 7.058 min
 Delta R.T.: -0.038 min
 Response: 68594442
 Conc: 1297.05 ng/ml



#24 Toxaphene-3

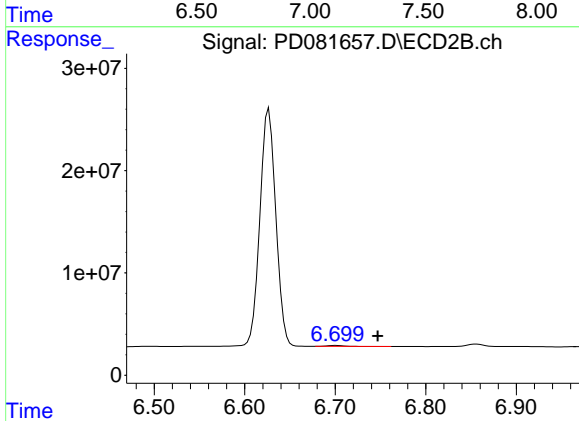
R.T.: 6.627 min
 Delta R.T.: 0.007 min
 Response: 284012115
 Conc: 4852.28 ng/ml



#25 Toxaphene-4

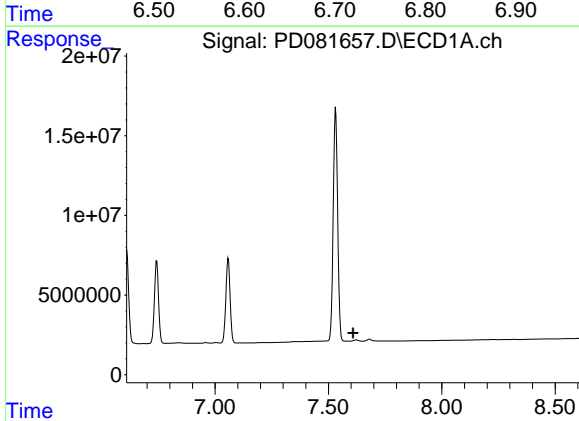
R.T.: 0.000 min
 Exp R.T.: 7.187 min
 Response: 0
 Conc: N.D.

Instrument :
 ECD_D
 ClientSampleId :
 INDA3124



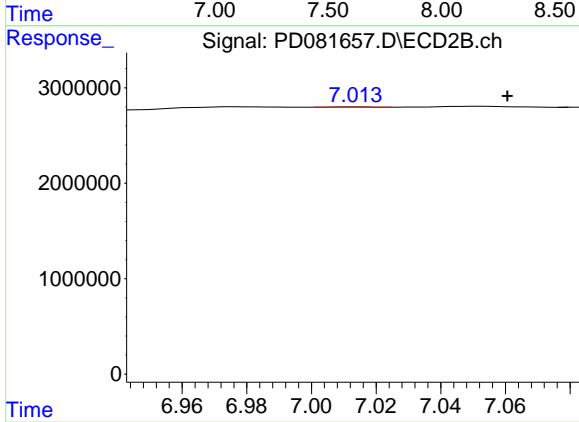
#25 Toxaphene-4

R.T.: 6.701 min
 Delta R.T.: -0.046 min
 Response: 1108725
 Conc: 13.93 ng/ml



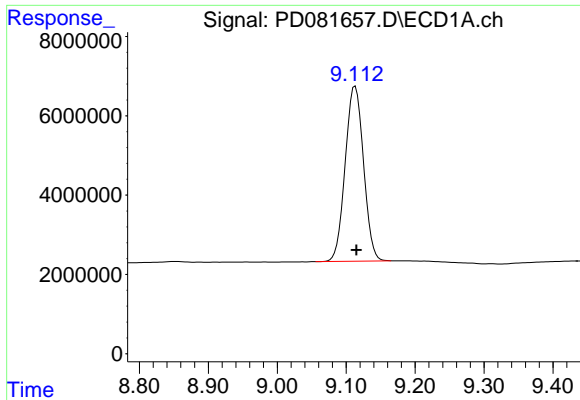
#26 Toxaphene-5

R.T.: 0.000 min
 Exp R.T.: 7.609 min
 Response: 0
 Conc: N.D.



#26 Toxaphene-5

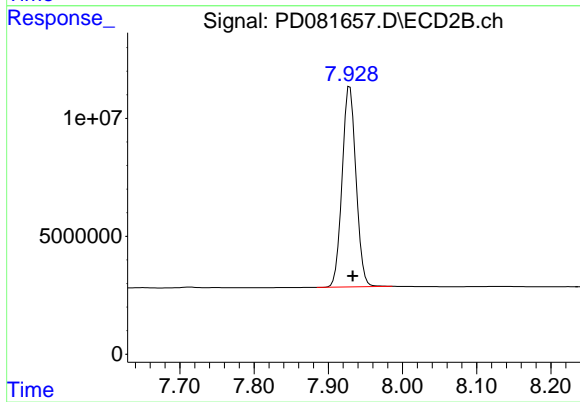
R.T.: 7.014 min
 Delta R.T.: -0.046 min
 Response: 23979
 Conc: 0.74 ng/ml



#27 Decachlorobiphenyl

R.T.: 9.113 min
Delta R.T.: -0.002 min
Response: 81599713
Conc: 42.29 ng/ml

Instrument :
ECD_D
ClientSampleId :
INDA3124



#27 Decachlorobiphenyl

R.T.: 7.929 min
Delta R.T.: -0.004 min
Response: 110648502
Conc: 44.60 ng/ml