

Data Path : Z:\pestpcbsrv\HPCHEM1\ECD_D\Data\PD022724\
 Data File : PD081682.D
 Signal(s) : Signal #1: ECD1A.ch Signal #2: ECD2B.ch
 Acq On : 27 Feb 2024 16:22
 Operator : AR\AJ
 Sample : P1553-11
 Misc :
 ALS Vial : 21 Sample Multiplier: 1

Instrument :
 ECD_D
 ClientSampleId :
 BGS93

Integration File signal 1: autoint1.e
 Integration File signal 2: autoint2.e
 Quant Time: Feb 27 21:59:05 2024
 Quant Method : Z:\pestpcbsrv\HPCHEM1\ECD_D\Method\PD021224CLP.M
 Quant Title : GC Extractables
 QLast Update : Mon Feb 12 17:06:05 2024
 Response via : Initial Calibration
 Integrator: ChemStation

Volume Inj. : 1 µl
 Signal #1 Phase : ZB-MR2 Signal #2 Phase: ZB-MR2
 Signal #1 Info : 30M x 0.32mm x0.5 Signal #2 Info : 30M x 0.32mm x 0.25µm

Compound	RT#1	RT#2	Resp#1	Resp#2	ng/ml	ng/ml

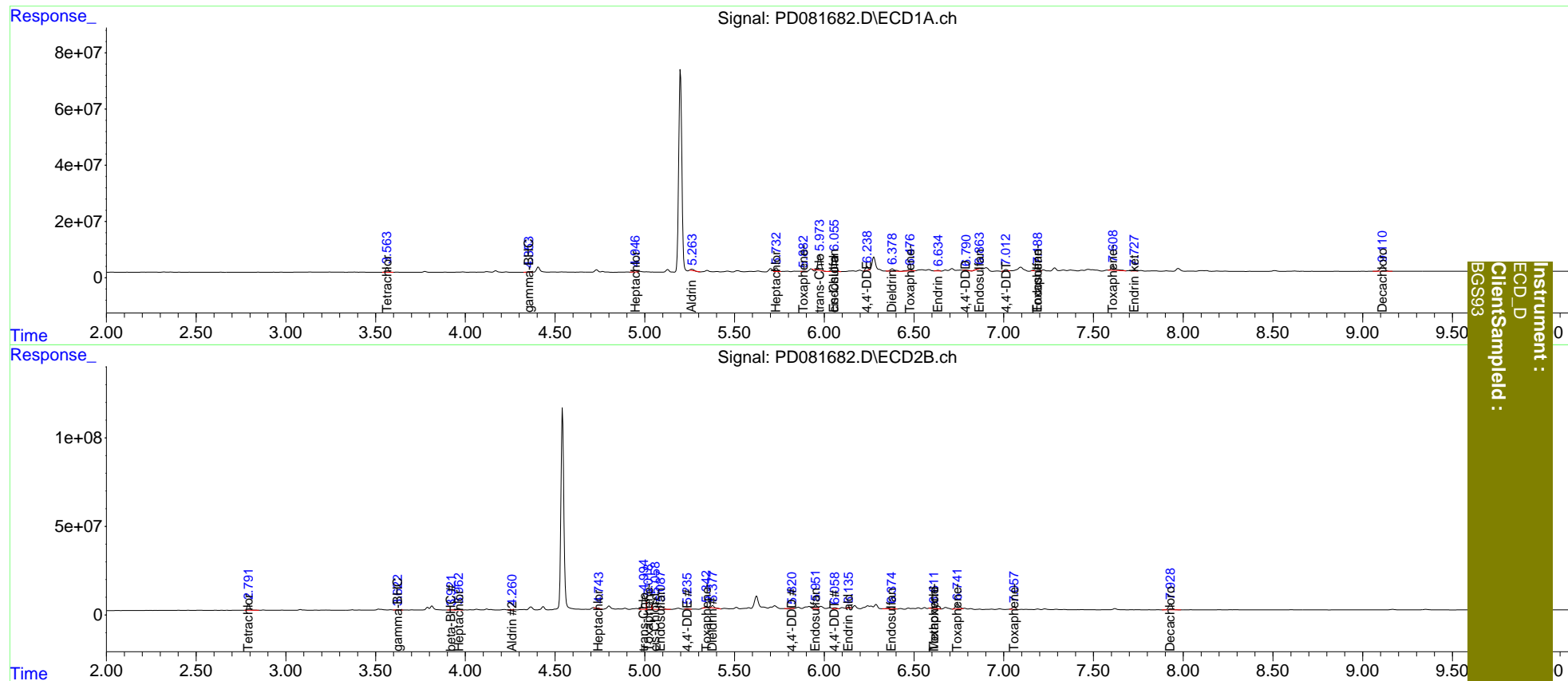
System Monitoring Compounds						
1) SA Tetrachlo...	3.564	2.792	18447960	36621220	13.494	14.938
2) SA Decachlor...	9.111	7.929	32047888	46074495	16.611	18.573
Target Compounds						
3) MA gamma-BHC...	4.355	3.624	1106056	1556226	0.479	0.430
4) MA Heptachlor	4.947	3.963	5812581	9603910	2.370	2.707
5) MB Aldrin	5.263f	4.261	4982438	1576145	2.107	0.465 #
6) B beta-BHC	0.000	3.923	0	1892118	N.D.	1.120
8) B Heptachlo...	5.733	4.742	16550111	1714337	7.307	0.534 #
9) A Endosulfan I	6.056f	5.088	84833135	27730610	40.289	9.262 #
10) B trans-Chl...	5.974	4.995	61050559	98546082	27.885	31.580
11) B cis-Chlor...	6.056	5.059	84833135	90162150	37.665	28.145 #
12) B 4,4'-DDE	6.240	5.237	13589209	4909590	6.331	1.660 #
13) MA Dieldrin	6.379	5.379	15246189	11082691	6.866	3.374 #
15) B Endosulfa...	6.865f	5.953	2452614	24458164	1.270	8.665 #
16) A 4,4'-DDD	6.787f	5.822	3042435	572800	1.832	0.227 #
17) MA 4,4'-DDT	7.013f	6.059	6930975	7613982	3.989	2.948 #
18) B Endrin al...	6.967	6.136	-2196189	4719088	N.D.	2.178
19) B Endosulfa...	7.189	6.376	18076948	18138314	9.873	6.761 #
20) A Methoxychlor	0.000	6.612	0	16410300	N.D.	12.283
21) B Endrin ke...	7.728f	6.866	4046318	-293364	2.093	N.D. #
22) Toxaphene-1	5.884	5.020	1110839	76717247	170.072	4685.828 #
23) Toxaphene-2	6.478	5.343	11402201	6730126	601.457	394.884 #
24) Toxaphene-3	0.000	6.612	0	16410300	N.D.	280.366
25) Toxaphene-4	7.189	6.743	18076948	44310404	456.978	556.830
26) Toxaphene-5	7.610	7.058	27289821	19598513	920.144	604.388 #

(f)=RT Delta > 1/2 Window (#)=Amounts differ by > 25% (m)=manual int.

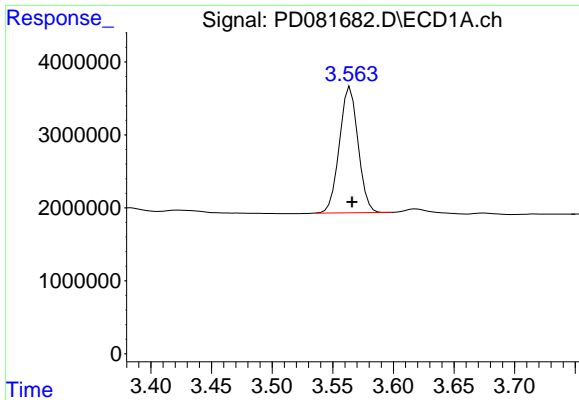
Data Path : Z:\pestpcbsrv\HPCHEM1\ECD_D\Data\PD022724\
 Data File : PD081682.D
 Signal(s) : Signal #1: ECD1A.ch Signal #2: ECD2B.ch
 Acq On : 27 Feb 2024 16:22
 Operator : AR\AJ
 Sample : P1553-11
 Misc :
 ALS Vial : 21 Sample Multiplier: 1

Integration File signal 1: autoint1.e
 Integration File signal 2: autoint2.e
 Quant Time: Feb 27 21:59:05 2024
 Quant Method : Z:\pestpcbsrv\HPCHEM1\ECD_D\Method\PD021224CLP.M
 Quant Title : GC Extractables
 QLast Update : Mon Feb 12 17:06:05 2024
 Response via : Initial Calibration
 Integrator: ChemStation

Volume Inj. : 1 µl
 Signal #1 Phase : ZB-MR1 Signal #2 Phase: ZB-MR2
 Signal #1 Info : 30M x 0.32mm x0.5 Signal #2 Info : 30M x 0.32mm x 0.25µm



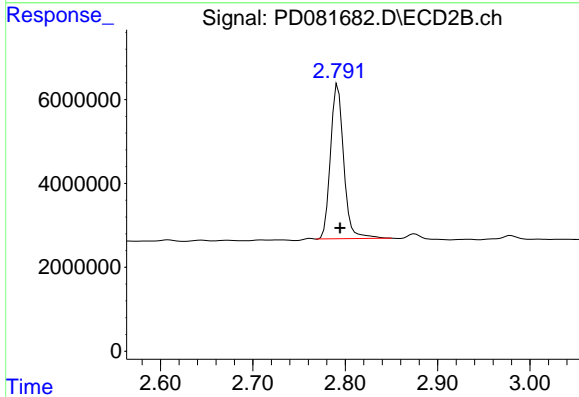
Instrument :
 ECD_D
 ClientSampled :
 BGS93



#1 Tetrachloro-m-xylene

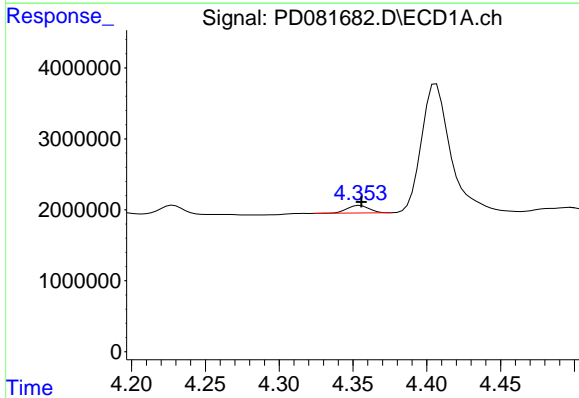
R.T.: 3.564 min
 Delta R.T.: -0.002 min
 Response: 18447960
 Conc: 13.49 ng/ml

Instrument :
 ECD_D
 ClientSampleId :
 BGS93



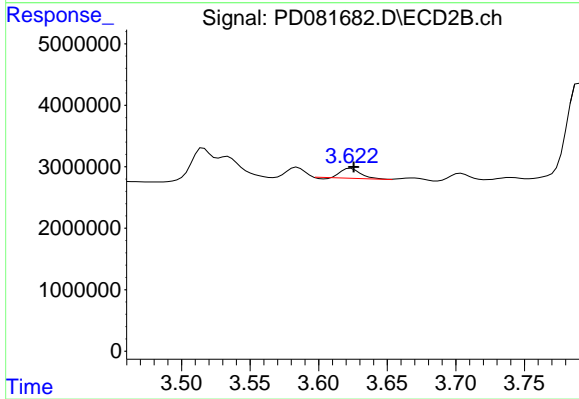
#1 Tetrachloro-m-xylene

R.T.: 2.792 min
 Delta R.T.: -0.002 min
 Response: 36621220
 Conc: 14.94 ng/ml



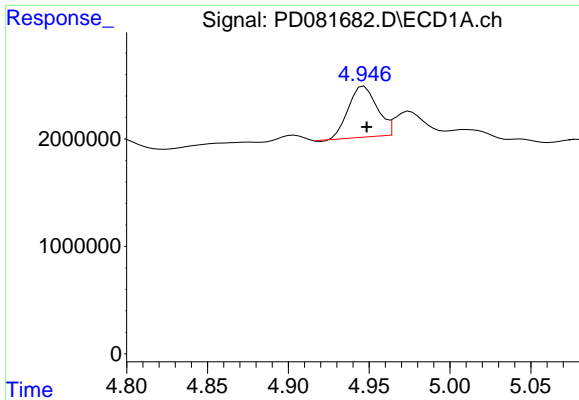
#3 gamma-BHC (Lindane)

R.T.: 4.355 min
 Delta R.T.: 0.000 min
 Response: 1106056
 Conc: 0.48 ng/ml



#3 gamma-BHC (Lindane)

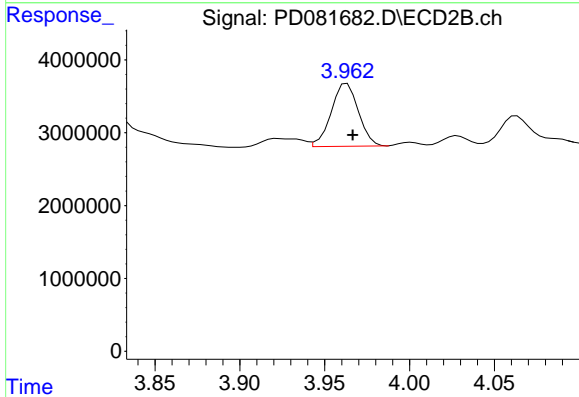
R.T.: 3.624 min
 Delta R.T.: -0.002 min
 Response: 1556226
 Conc: 0.43 ng/ml



#4 Heptachlor

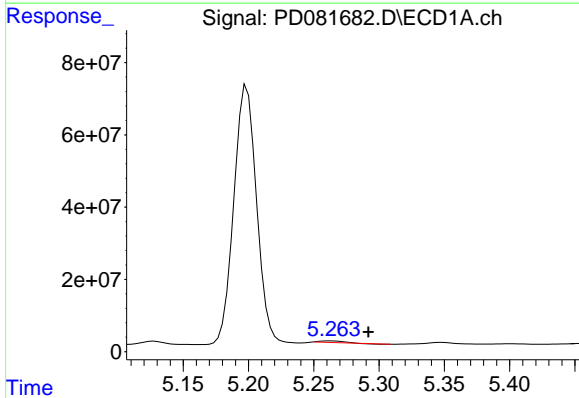
R.T.: 4.947 min
 Delta R.T.: -0.002 min
 Response: 5812581
 Conc: 2.37 ng/ml

Instrument :
 ECD_D
 ClientSampleId :
 BGS93



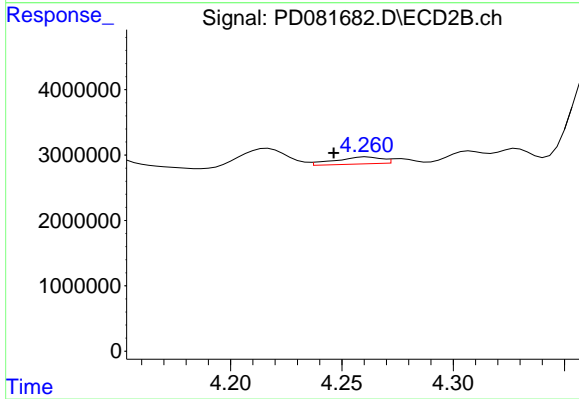
#4 Heptachlor

R.T.: 3.963 min
 Delta R.T.: -0.003 min
 Response: 9603910
 Conc: 2.71 ng/ml



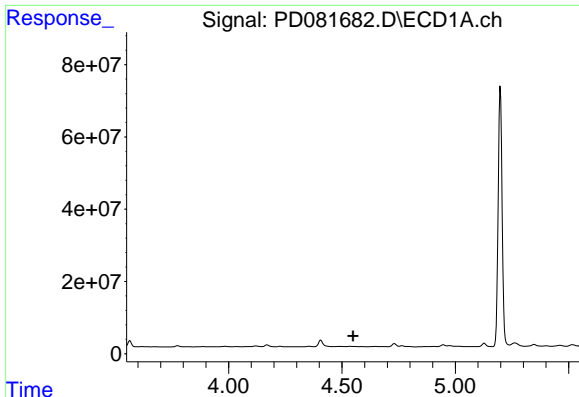
#5 Aldrin

R.T.: 5.263 min
 Delta R.T.: -0.029 min
 Response: 4982438
 Conc: 2.11 ng/ml



#5 Aldrin

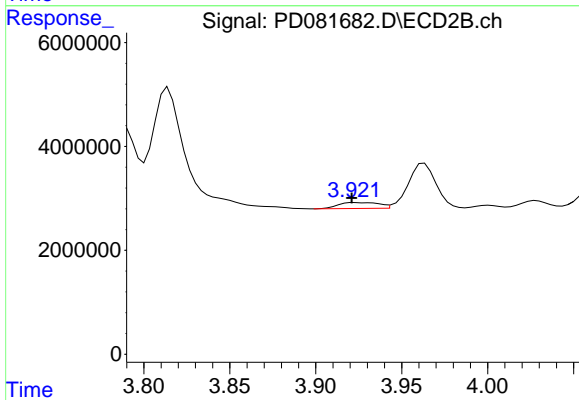
R.T.: 4.261 min
 Delta R.T.: 0.015 min
 Response: 1576145
 Conc: 0.47 ng/ml



#6 beta-BHC

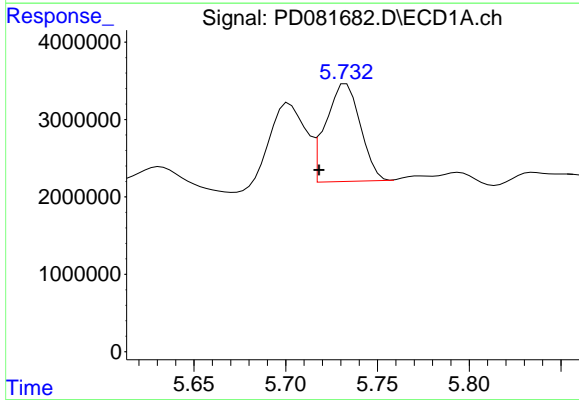
R.T.: 0.000 min
 Exp R.T.: 4.550 min
 Response: 0
 Conc: N.D.

Instrument :
 ECD_D
 ClientSampleId :
 BGS93



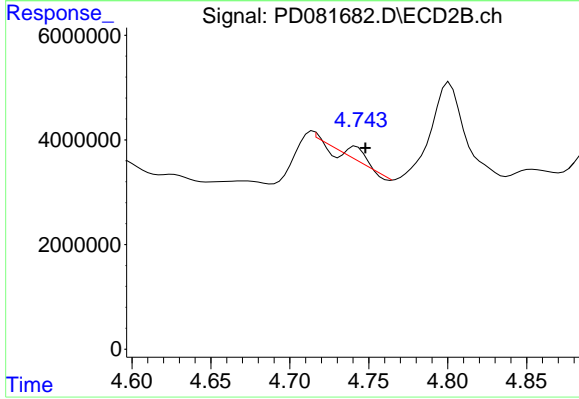
#6 beta-BHC

R.T.: 3.923 min
 Delta R.T.: 0.002 min
 Response: 1892118
 Conc: 1.12 ng/ml



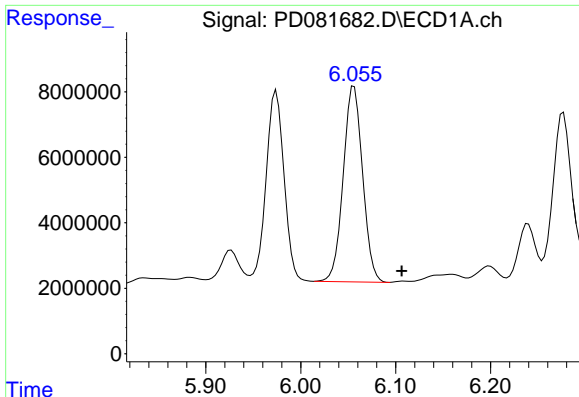
#8 Heptachlor epoxide

R.T.: 5.733 min
 Delta R.T.: 0.015 min
 Response: 16550111
 Conc: 7.31 ng/ml



#8 Heptachlor epoxide

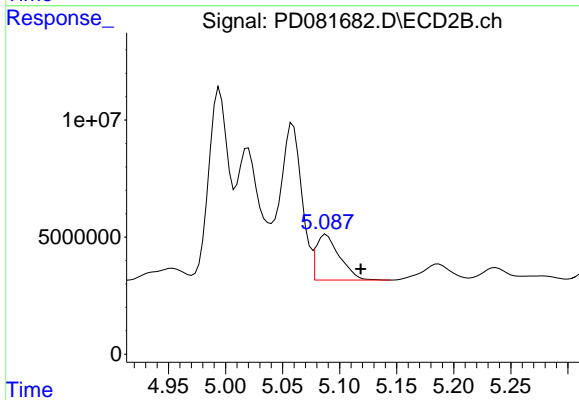
R.T.: 4.742 min
 Delta R.T.: -0.006 min
 Response: 1714337
 Conc: 0.53 ng/ml



#9 Endosulfan I

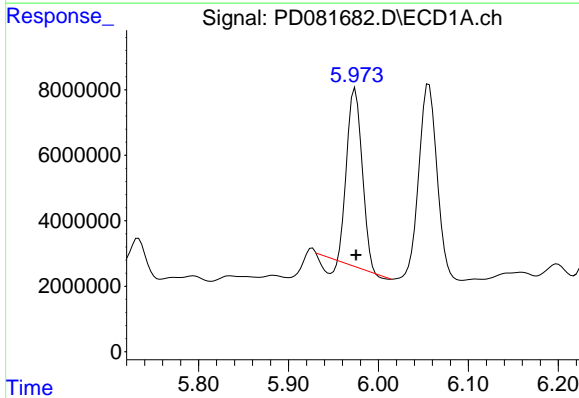
R.T.: 6.056 min
 Delta R.T.: -0.050 min
 Response: 84833135
 Conc: 40.29 ng/ml

Instrument :
 ECD_D
 ClientSampleId :
 BGS93



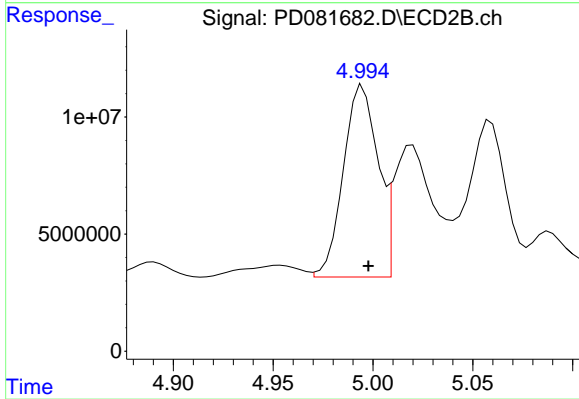
#9 Endosulfan I

R.T.: 5.088 min
 Delta R.T.: -0.030 min
 Response: 27730610
 Conc: 9.26 ng/ml



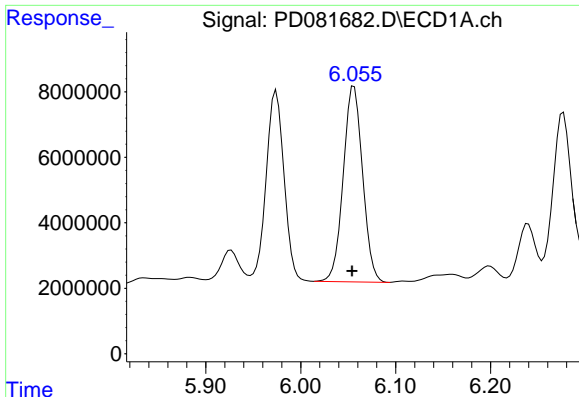
#10 trans-Chlordane

R.T.: 5.974 min
 Delta R.T.: 0.000 min
 Response: 61050559
 Conc: 27.89 ng/ml



#10 trans-Chlordane

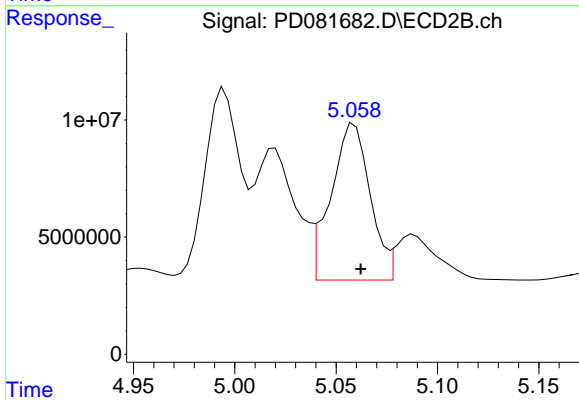
R.T.: 4.995 min
 Delta R.T.: -0.003 min
 Response: 98546082
 Conc: 31.58 ng/ml



#11 cis-Chlordane

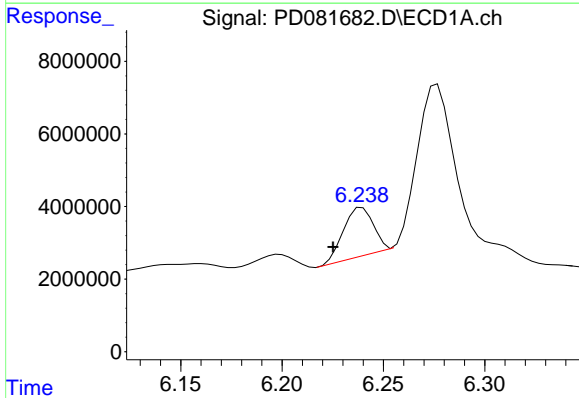
R.T.: 6.056 min
 Delta R.T.: 0.002 min
 Response: 84833135
 Conc: 37.67 ng/ml

Instrument :
 ECD_D
 ClientSampleId :
 BGS93



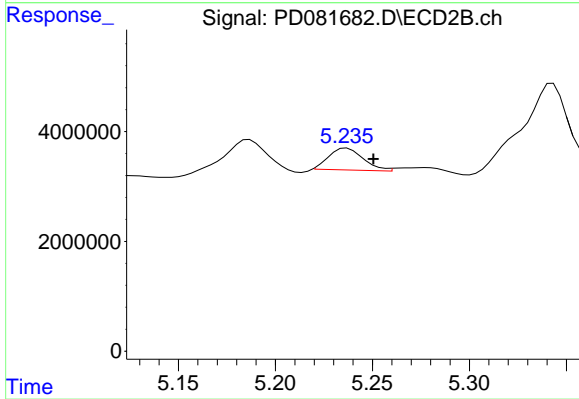
#11 cis-Chlordane

R.T.: 5.059 min
 Delta R.T.: -0.003 min
 Response: 90162150
 Conc: 28.14 ng/ml



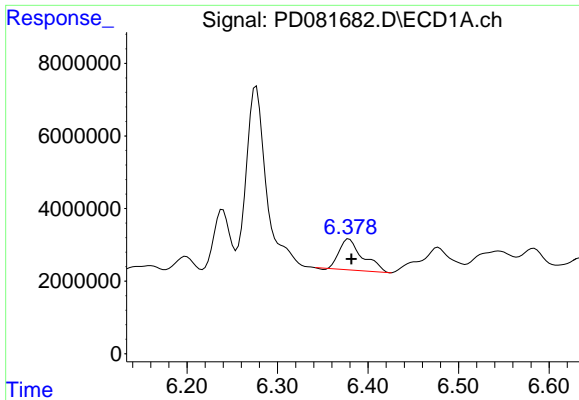
#12 4,4'-DDE

R.T.: 6.240 min
 Delta R.T.: 0.014 min
 Response: 13589209
 Conc: 6.33 ng/ml



#12 4,4'-DDE

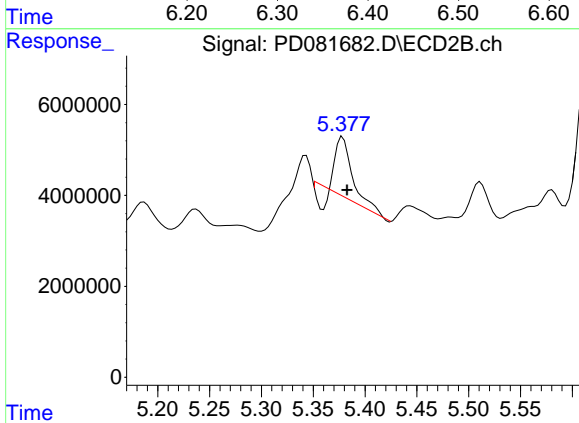
R.T.: 5.237 min
 Delta R.T.: -0.014 min
 Response: 4909590
 Conc: 1.66 ng/ml



#13 Dieldrin

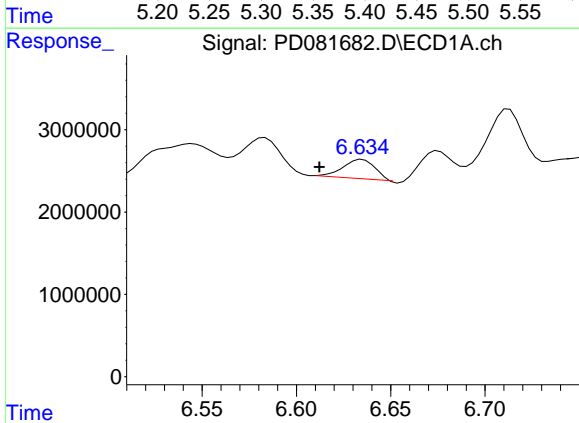
R.T.: 6.379 min
 Delta R.T.: -0.003 min
 Response: 15246189
 Conc: 6.87 ng/ml

Instrument :
 ECD_D
 ClientSampleId :
 BGS93



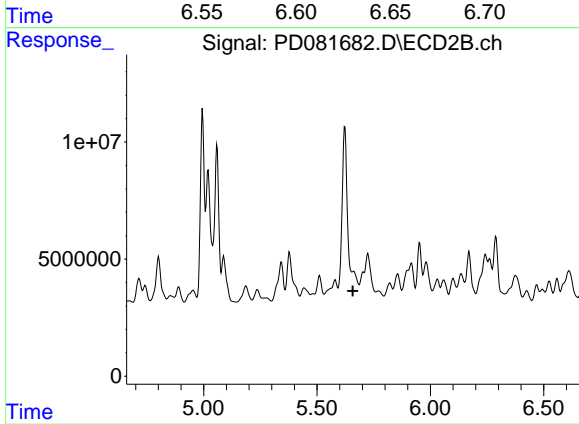
#13 Dieldrin

R.T.: 5.379 min
 Delta R.T.: -0.004 min
 Response: 11082691
 Conc: 3.37 ng/ml



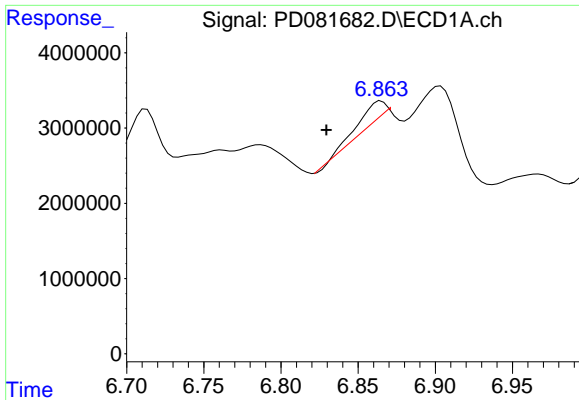
#14 Endrin

R.T.: 6.635 min
 Delta R.T.: 0.023 min
 Response: 2386042
 Conc: 1.27 ng/ml



#14 Endrin

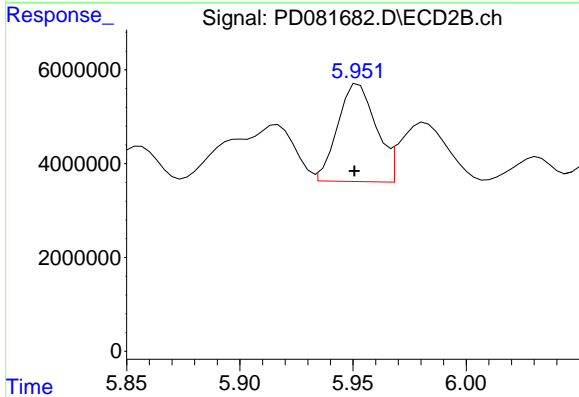
R.T.: 5.662 min
 Delta R.T.: 0.004 min
 Response: -17006557
 Conc: N.D.



#15 Endosulfan II

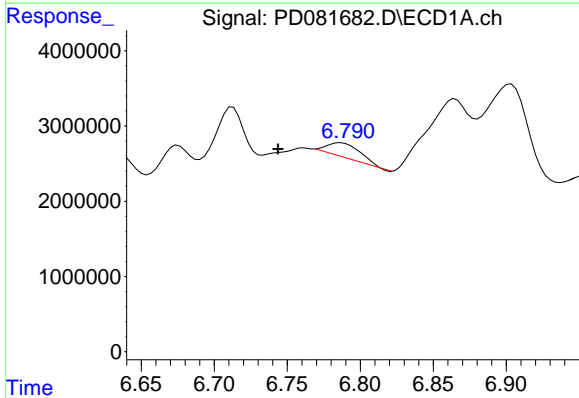
R.T.: 6.865 min
 Delta R.T.: 0.036 min
 Response: 2452614
 Conc: 1.27 ng/ml

Instrument :
 ECD_D
 ClientSampleId :
 BGS93



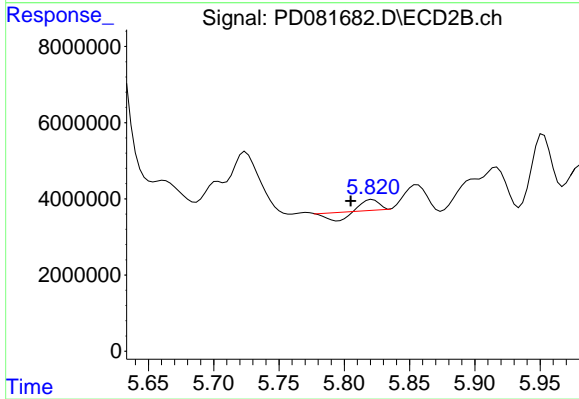
#15 Endosulfan II

R.T.: 5.953 min
 Delta R.T.: 0.002 min
 Response: 24458164
 Conc: 8.67 ng/ml



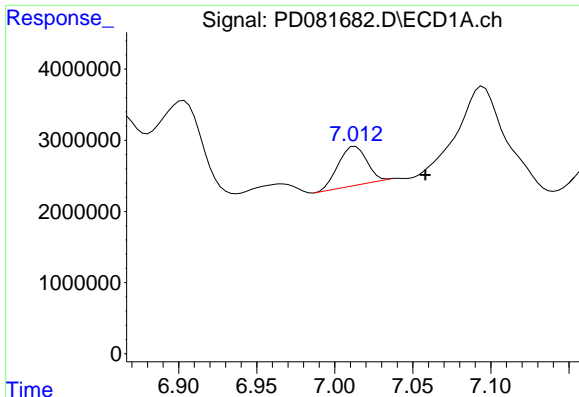
#16 4,4'-DDD

R.T.: 6.787 min
 Delta R.T.: 0.043 min
 Response: 3042435
 Conc: 1.83 ng/ml



#16 4,4'-DDD

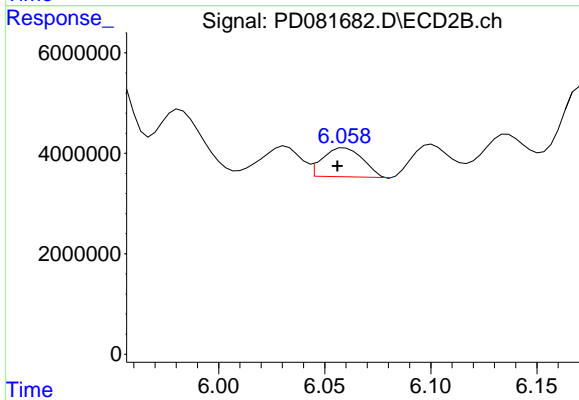
R.T.: 5.822 min
 Delta R.T.: 0.017 min
 Response: 572800
 Conc: 0.23 ng/ml



#17 4,4'-DDT

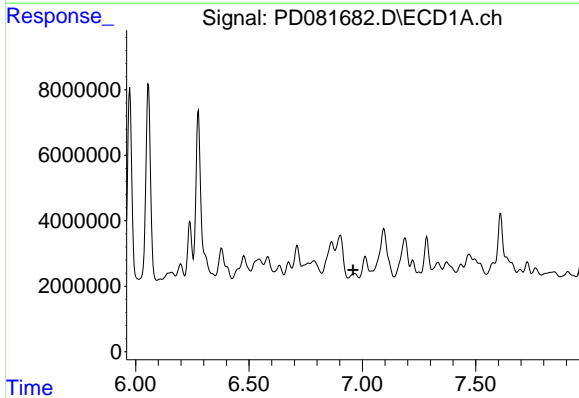
R.T.: 7.013 min
 Delta R.T.: -0.045 min
 Response: 6930975
 Conc: 3.99 ng/ml

Instrument :
 ECD_D
 ClientSampleId :
 BGS93



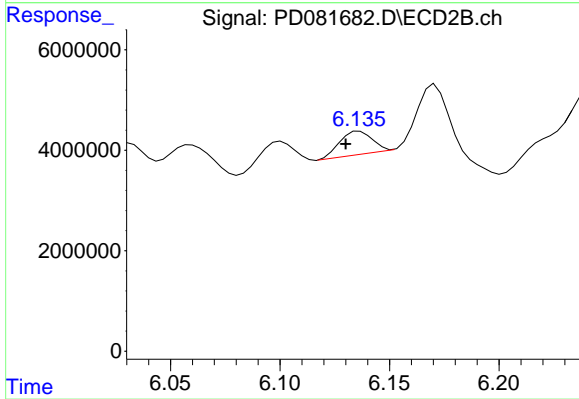
#17 4,4'-DDT

R.T.: 6.059 min
 Delta R.T.: 0.003 min
 Response: 7613982
 Conc: 2.95 ng/ml



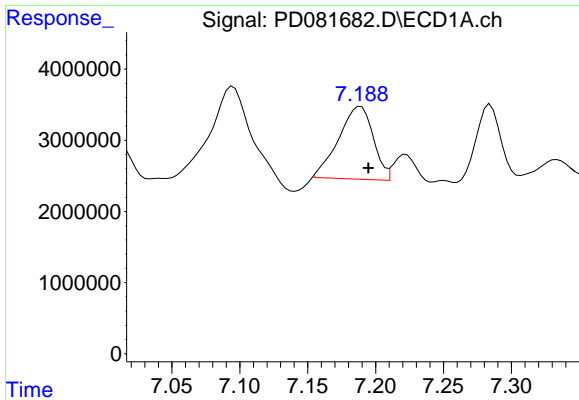
#18 Endrin aldehyde

R.T.: 6.967 min
 Delta R.T.: 0.007 min
 Response: -2196189
 Conc: N.D.



#18 Endrin aldehyde

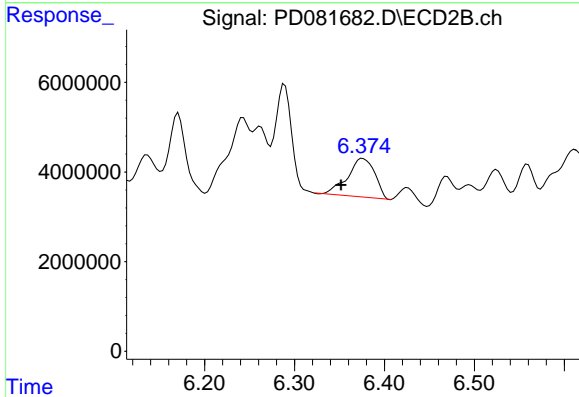
R.T.: 6.136 min
 Delta R.T.: 0.006 min
 Response: 4719088
 Conc: 2.18 ng/ml



#19 Endosulfan Sulfate

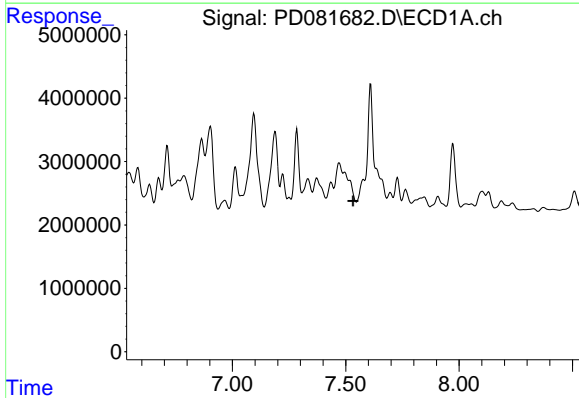
R.T.: 7.189 min
 Delta R.T.: -0.006 min
 Response: 18076948
 Conc: 9.87 ng/ml

Instrument :
 ECD_D
 ClientSampleId :
 BGS93



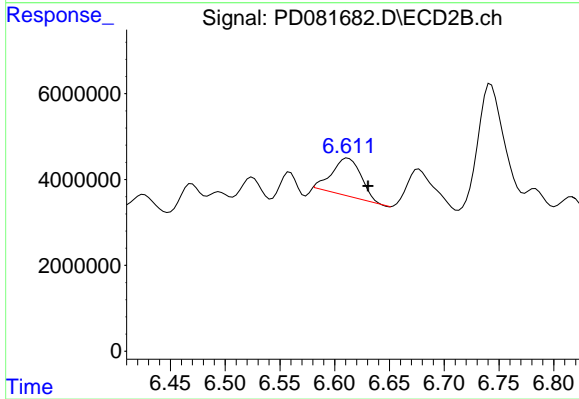
#19 Endosulfan Sulfate

R.T.: 6.376 min
 Delta R.T.: 0.024 min
 Response: 18138314
 Conc: 6.76 ng/ml



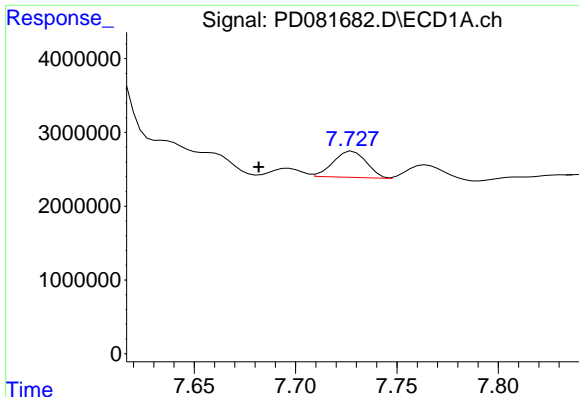
#20 Methoxychlor

R.T.: 0.000 min
 Exp R.T. : 7.532 min
 Response: 0
 Conc: N.D.



#20 Methoxychlor

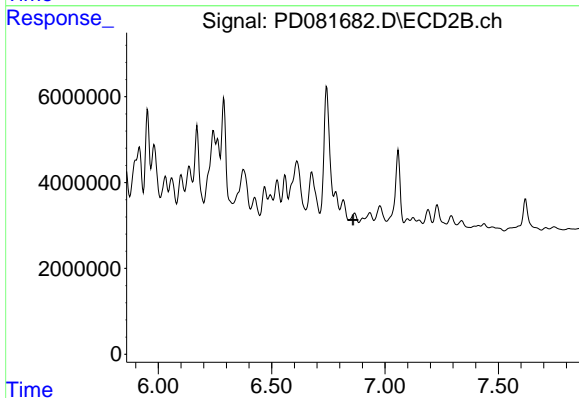
R.T.: 6.612 min
 Delta R.T.: -0.018 min
 Response: 16410300
 Conc: 12.28 ng/ml



#21 Endrin ketone

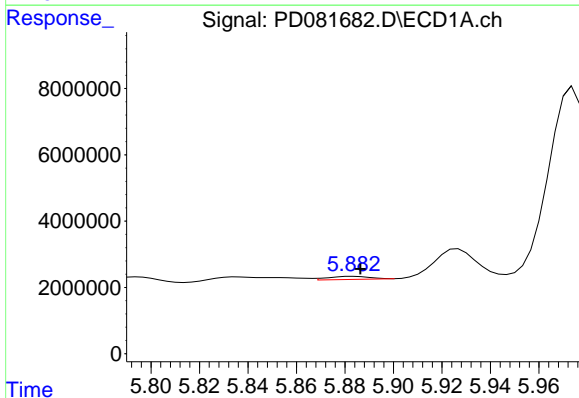
R.T.: 7.728 min
 Delta R.T.: 0.046 min
 Response: 4046318
 Conc: 2.09 ng/ml

Instrument :
 ECD_D
 ClientSampleId :
 BGS93



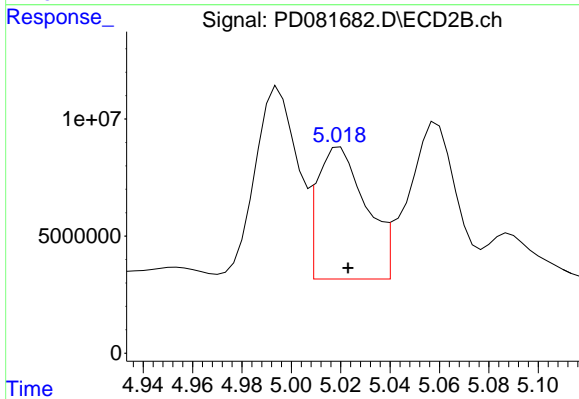
#21 Endrin ketone

R.T.: 6.866 min
 Delta R.T.: 0.008 min
 Response: -293364
 Conc: N.D.



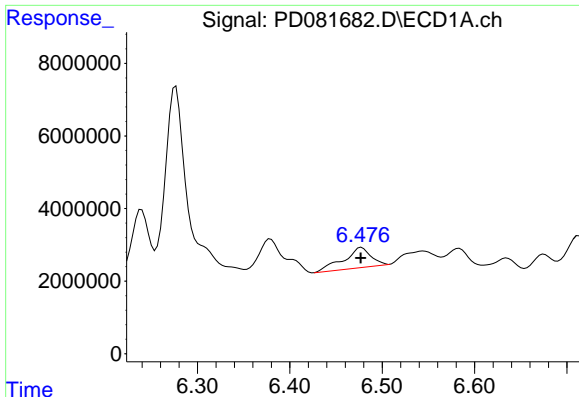
#22 Toxaphene-1

R.T.: 5.884 min
 Delta R.T.: -0.003 min
 Response: 1110839
 Conc: 170.07 ng/ml



#22 Toxaphene-1

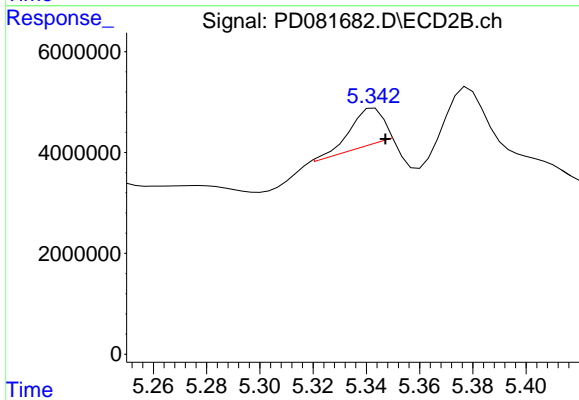
R.T.: 5.020 min
 Delta R.T.: -0.003 min
 Response: 76717247
 Conc: 4685.83 ng/ml



#23 Toxaphene-2

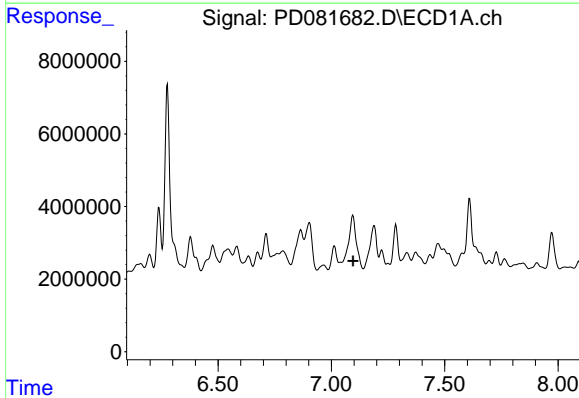
R.T.: 6.478 min
 Delta R.T.: 0.000 min
 Response: 11402201
 Conc: 601.46 ng/ml

Instrument :
 ECD_D
 ClientSampleId :
 BGS93



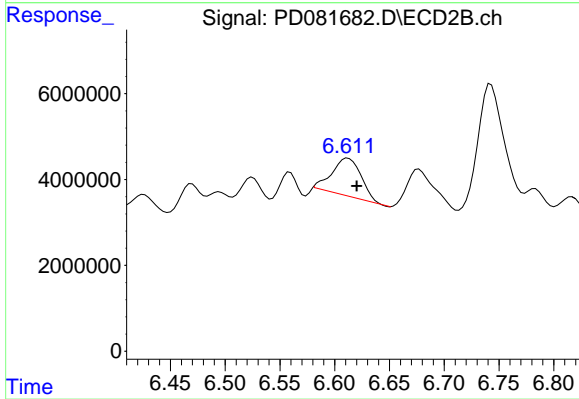
#23 Toxaphene-2

R.T.: 5.343 min
 Delta R.T.: -0.004 min
 Response: 6730126
 Conc: 394.88 ng/ml



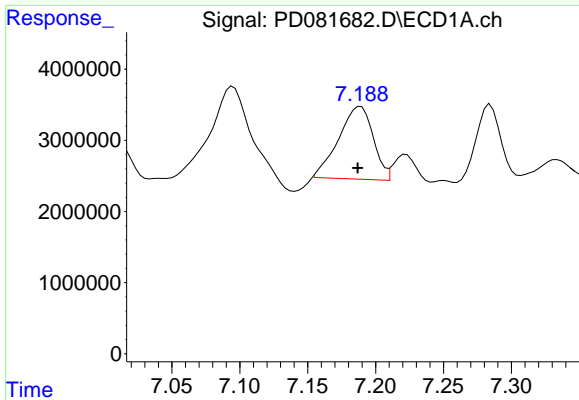
#24 Toxaphene-3

R.T.: 0.000 min
 Exp R.T. : 7.096 min
 Response: 0
 Conc: N.D.



#24 Toxaphene-3

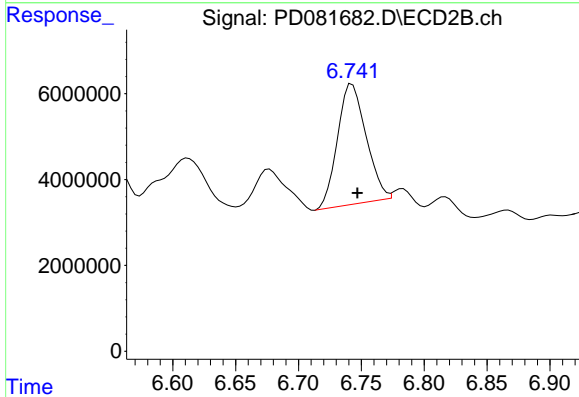
R.T.: 6.612 min
 Delta R.T.: -0.008 min
 Response: 16410300
 Conc: 280.37 ng/ml



#25 Toxaphene-4

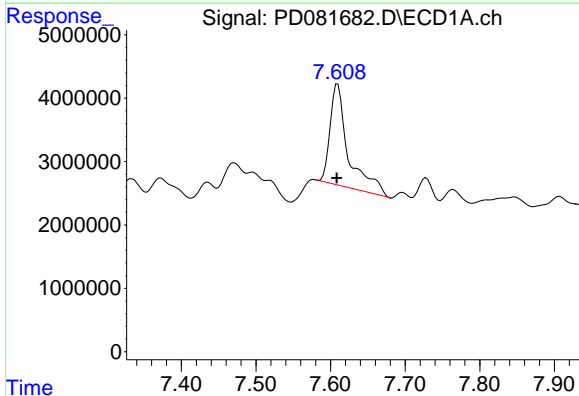
R.T.: 7.189 min
 Delta R.T.: 0.002 min
 Response: 18076948
 Conc: 456.98 ng/ml

Instrument :
 ECD_D
 ClientSampleId :
 BGS93



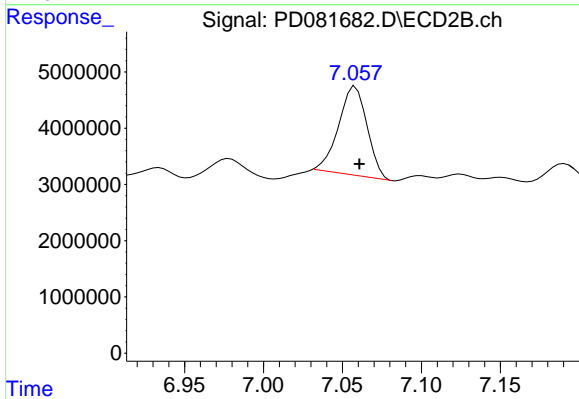
#25 Toxaphene-4

R.T.: 6.743 min
 Delta R.T.: -0.004 min
 Response: 44310404
 Conc: 556.83 ng/ml



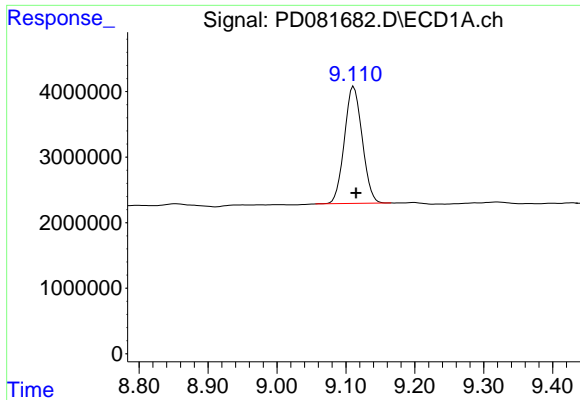
#26 Toxaphene-5

R.T.: 7.610 min
 Delta R.T.: 0.001 min
 Response: 27289821
 Conc: 920.14 ng/ml



#26 Toxaphene-5

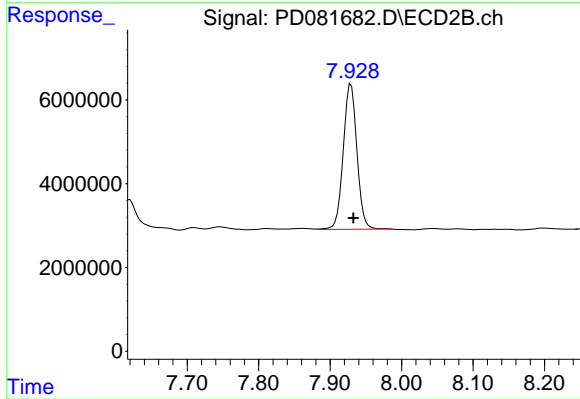
R.T.: 7.058 min
 Delta R.T.: -0.002 min
 Response: 19598513
 Conc: 604.39 ng/ml



#27 Decachlorobiphenyl

R.T.: 9.111 min
Delta R.T.: -0.003 min
Response: 32047888
Conc: 16.61 ng/ml

Instrument :
ECD_D
ClientSampleId :
BGS93



#27 Decachlorobiphenyl

R.T.: 7.929 min
Delta R.T.: -0.004 min
Response: 46074495
Conc: 18.57 ng/ml