

Data Path : Z:\pestpcbsrv\HPCHEM1\ECD_D\Data\PD022819\
 Data File : PD051454.D
 Signal(s) : Signal #1: ECD1A.CH Signal #2: ECD2B.CH
 Acq On : 28 Feb 2019 21:11
 Operator : AJ\SJ
 Sample : K1625-13
 Misc :
 ALS Vial : 26 Sample Multiplier: 1

Instrument :
 ECD_D
 ClientSampleId :

Integration File signal 1: autoint1.e
 Integration File signal 2: autoint2.e
 Quant Time: Mar 01 00:32:57 2019
 Quant Method : Z:\pestpcbsrv\HPCHEM1\ECD_D\Method\PD022219CLP.M
 Quant Title : GC Extractables
 QLast Update : Fri Feb 22 04:35:08 2019
 Response via : Initial Calibration
 Integrator: ChemStation 6890 Scale Mode: Large solvent peaks clipped

Volume Inj. : 1 µl
 Signal #1 Phase : ZB-MR2 Signal #2 Phase: ZB-MR1
 Signal #1 Info : 30M x 0.32mm x0.2 Signal #2 Info : 30M x 0.32mm x 0.50µm

Compound	RT#1	RT#2	Resp#1	Resp#2	ng/ml	ng/ml

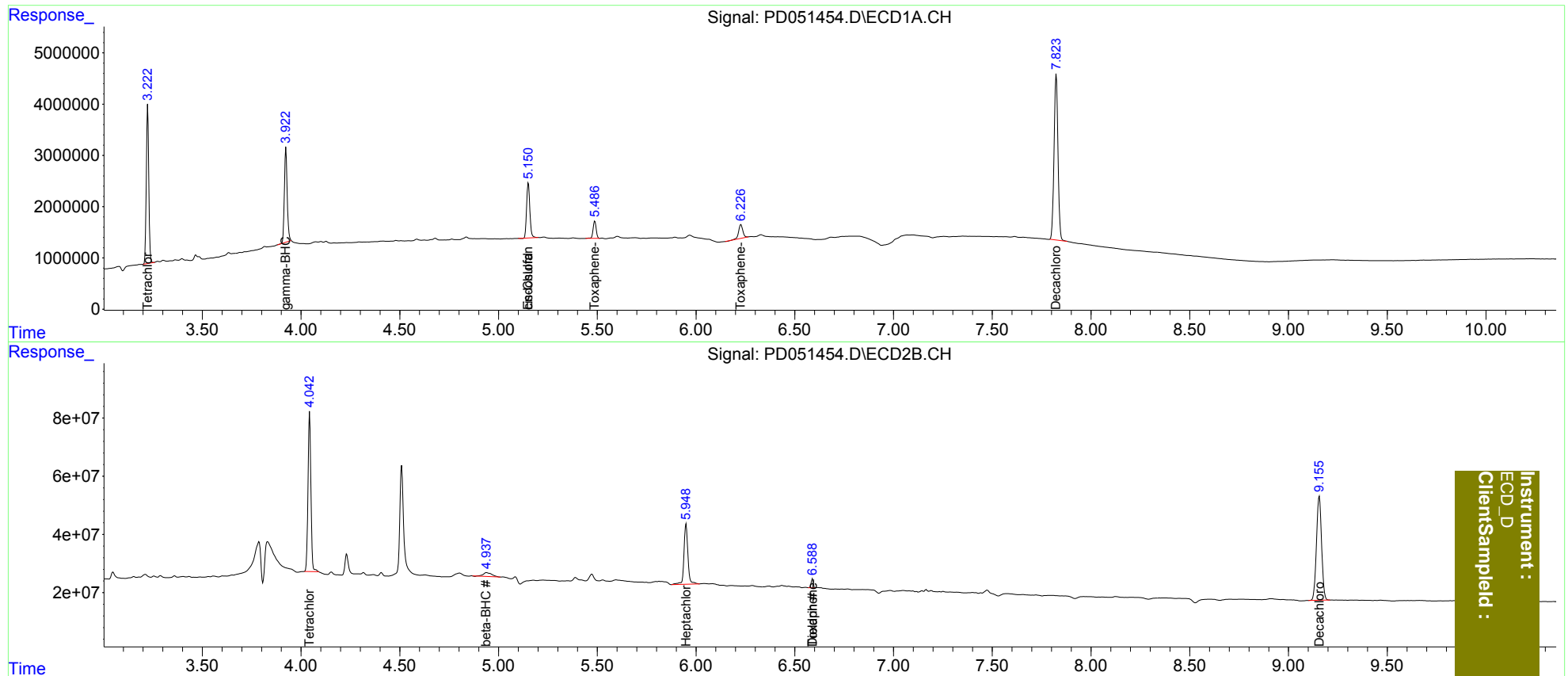
System Monitoring Compounds						
1) SA Tetrachlo...	3.224	4.044	27098362	564.4E6	18.857	18.268
27) SA Decachlor...	7.824	9.156	44465635	647.1E6	36.973	34.137
Target Compounds						
3) MA gamma-BHC...	3.923	0.000	18437524	0	8.759	N.D. #
6) B beta-BHC	0.000	4.939f	0	40499952	N.D.	2.041
8) B Heptachlo...	0.000	5.950	0	285.8E6	N.D.	7.983
9) A Endosulfan I	5.151	0.000	12135228	0	5.939	N.D. #
11) B cis-Chlor...	5.151	0.000	12135228	0	5.677	N.D. #
13) MA Dieldrin	0.000	6.590f	0	22240534	N.D.	0.668
22) Toxaphene-1	5.488	0.000	3633427	0	266.454	N.D. #
23) Toxaphene-2	0.000	6.590	0	22240534	N.D.	76.752
25) Toxaphene-4	6.228	0.000	4018506	0	104.078	N.D. #

(f)=RT Delta > 1/2 Window (#)=Amounts differ by > 25% (m)=manual int.

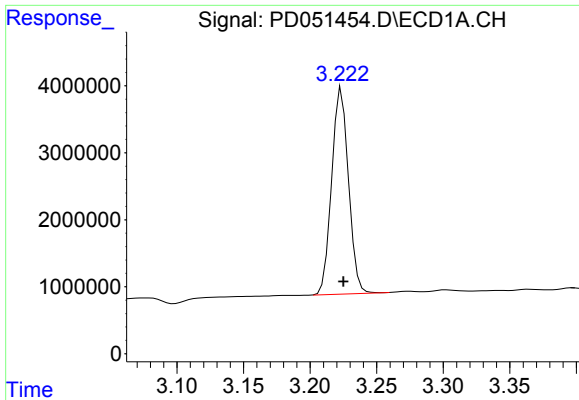
Data Path : Z:\pestpcbsrv\HPCHEM1\ECD_D\Data\PD022819\
Data File : PD051454.D
Signal(s) : Signal #1: ECD1A.CH Signal #2: ECD2B.CH
Acq On : 28 Feb 2019 21:11
Operator : AJ\SJ
Sample : K1625-13
Misc :
ALS Vial : 26 Sample Multiplier: 1

Integration File signal 1: autoint1.e
Integration File signal 2: autoint2.e
Quant Time: Mar 01 00:32:57 2019
Quant Method : Z:\pestpcbsrv\HPCHEM1\ECD_D\Method\PD022219CLP.M
Quant Title : GC Extractables
QLast Update : Fri Feb 22 04:35:08 2019
Response via : Initial Calibration
Integrator: ChemStation 6890 Scale Mode: Large solvent peaks clipped

Volume Inj. : 1 µl
Signal #1 Phase : ZB-MR2 Signal #2 Phase: ZB-MR1
Signal #1 Info : 30M x 0.32mm x 0.2 Signal #2 Info : 30M x 0.32mm x 0.50µm

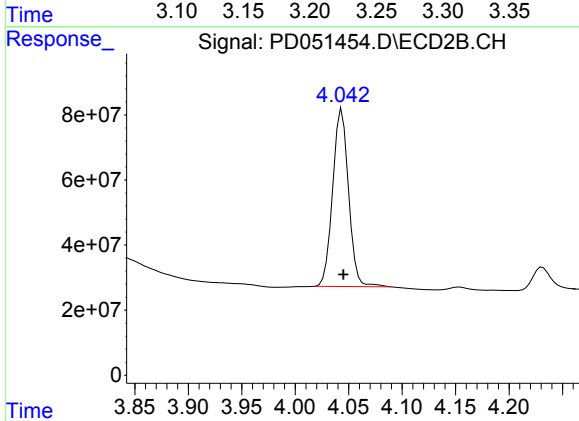


Instrument :
ECD_D
ClientSampleId :

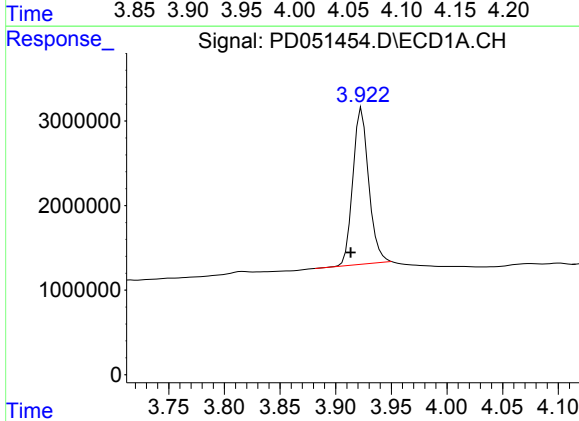


#1 Tetrachloro-m-xylene
 R.T.: 3.224 min
 Delta R.T.: -0.001 min
 Response: 27098362
 Conc: 18.86 ng/ml

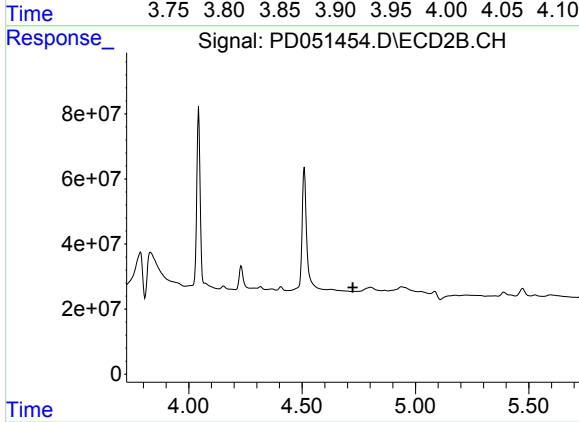
Instrument :
 ECD_D
 ClientSampled :



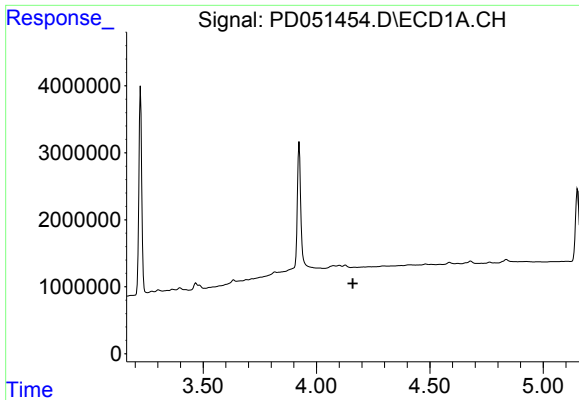
#1 Tetrachloro-m-xylene
 R.T.: 4.044 min
 Delta R.T.: -0.001 min
 Response: 564400070
 Conc: 18.27 ng/ml



#3 gamma-BHC (Lindane)
 R.T.: 3.923 min
 Delta R.T.: 0.010 min
 Response: 18437524
 Conc: 8.76 ng/ml



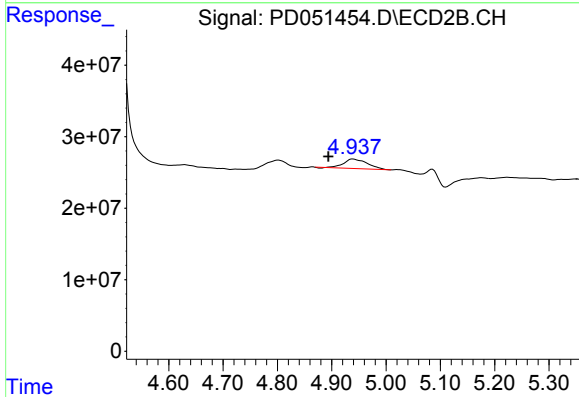
#3 gamma-BHC (Lindane)
 R.T.: 0.000 min
 Exp R.T. : 4.724 min
 Response: 0
 Conc: N.D.



#6 beta-BHC

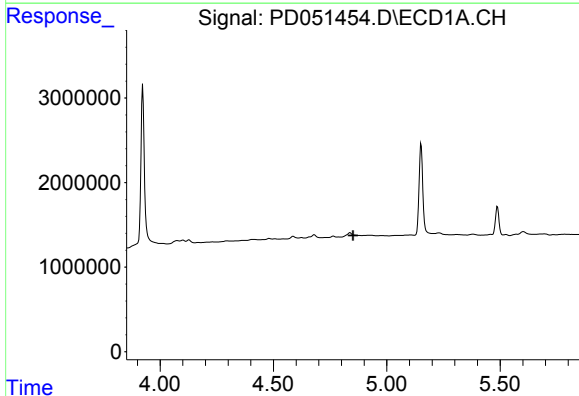
R.T.: 0.000 min
 Exp R.T. : 4.159 min
 Response: 0
 Conc: N.D.

Instrument :
 ECD_D
 ClientSampleId :



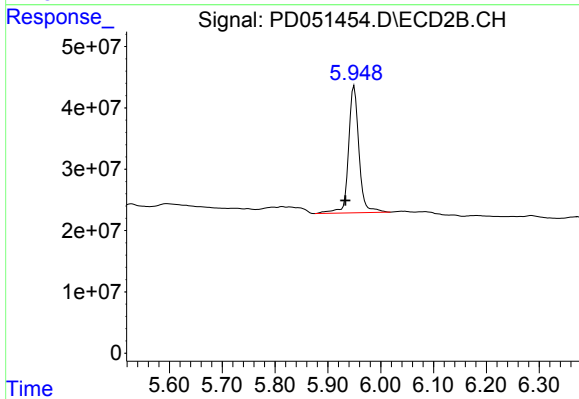
#6 beta-BHC

R.T.: 4.939 min
 Delta R.T.: 0.045 min
 Response: 40499952
 Conc: 2.04 ng/ml



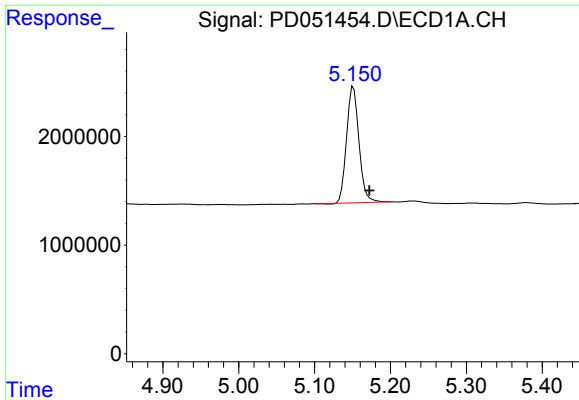
#8 Heptachlor epoxide

R.T.: 0.000 min
 Exp R.T. : 4.851 min
 Response: 0
 Conc: N.D.



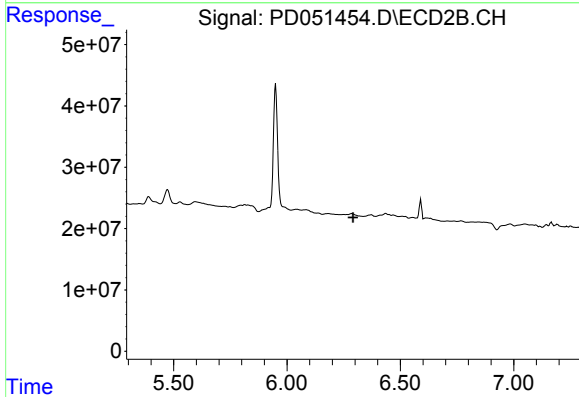
#8 Heptachlor epoxide

R.T.: 5.950 min
 Delta R.T.: 0.017 min
 Response: 285823763
 Conc: 7.98 ng/ml

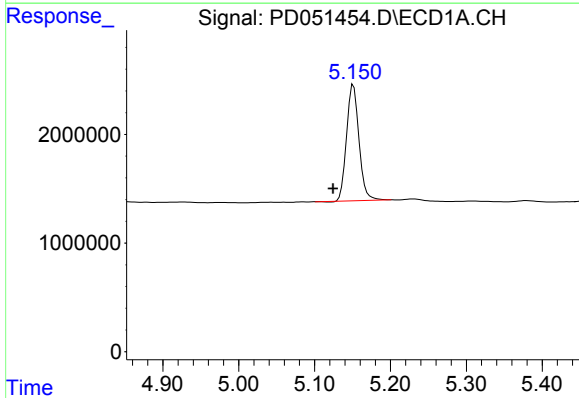


#9 Endosulfan I
 R.T.: 5.151 min
 Delta R.T.: -0.021 min
 Response: 12135228
 Conc: 5.94 ng/ml

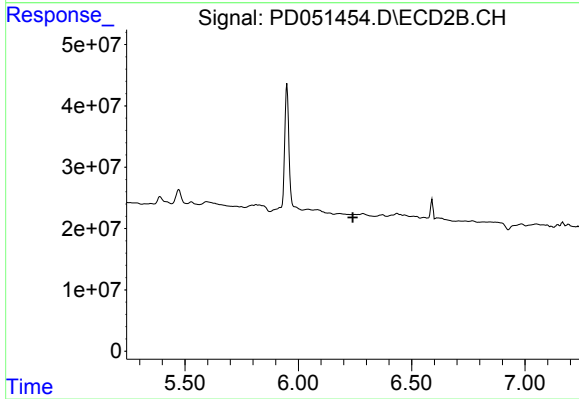
Instrument :
 ECD_D
 ClientSampleId :



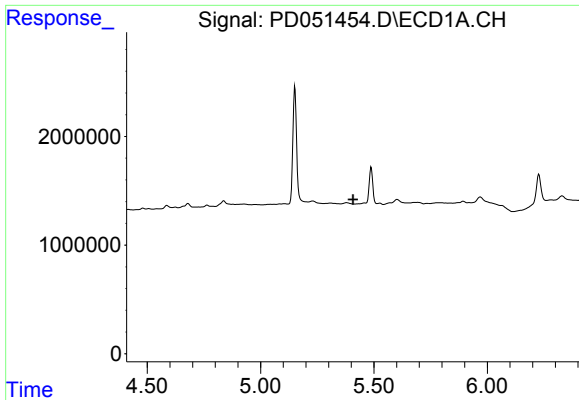
#9 Endosulfan I
 R.T.: 0.000 min
 Exp R.T. : 6.292 min
 Response: 0
 Conc: N.D.



#11 cis-Chlordane
 R.T.: 5.151 min
 Delta R.T.: 0.027 min
 Response: 12135228
 Conc: 5.68 ng/ml



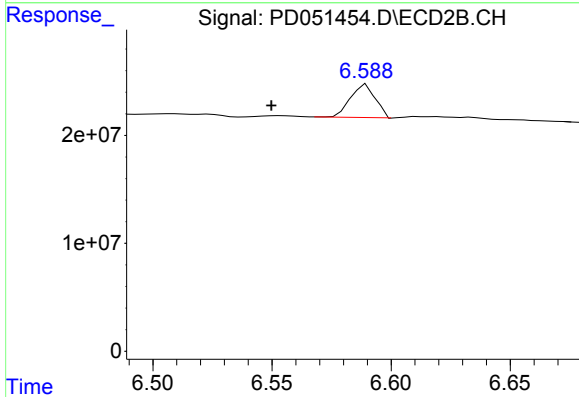
#11 cis-Chlordane
 R.T.: 0.000 min
 Exp R.T. : 6.241 min
 Response: 0
 Conc: N.D.



#13 Dieldrin

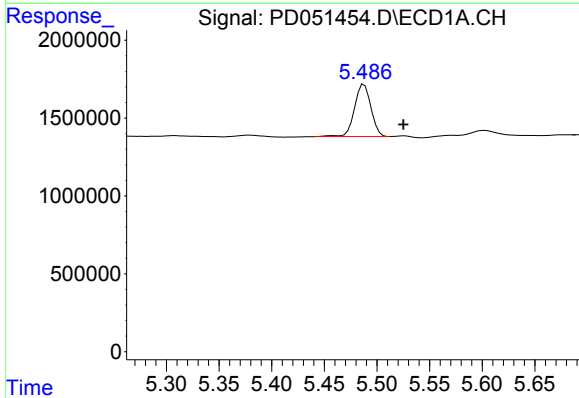
R.T.: 0.000 min
 Exp R.T.: 5.408 min
 Response: 0
 Conc: N.D.

Instrument :
 ECD_D
 ClientSampled :



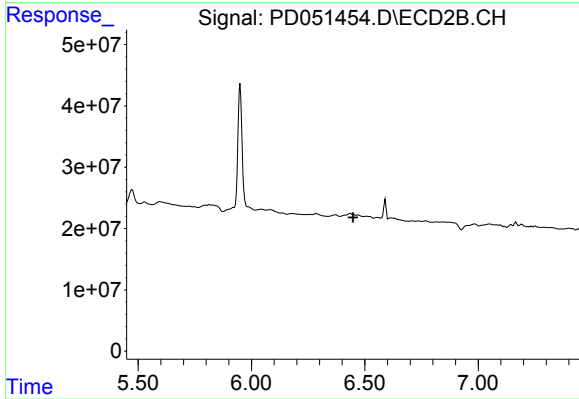
#13 Dieldrin

R.T.: 6.590 min
 Delta R.T.: 0.040 min
 Response: 22240534
 Conc: 0.67 ng/ml



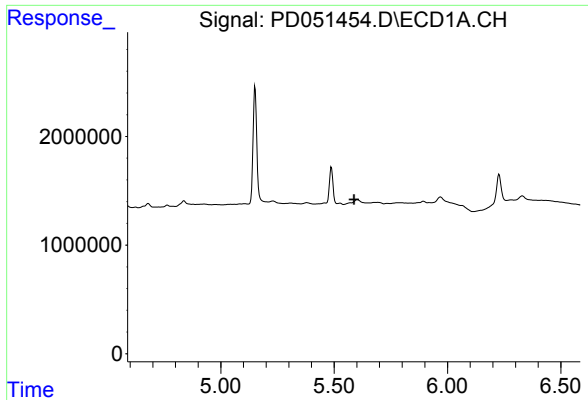
#22 Toxaphene-1

R.T.: 5.488 min
 Delta R.T.: -0.037 min
 Response: 3633427
 Conc: 266.45 ng/ml



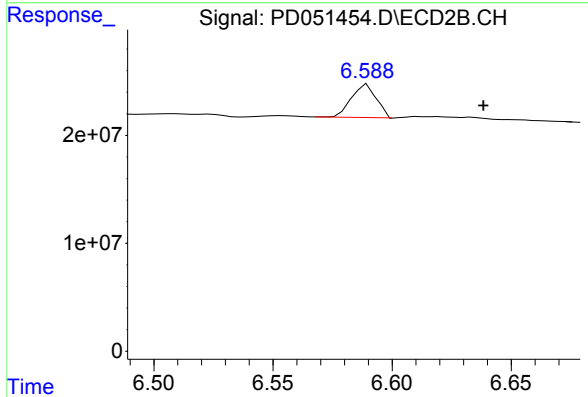
#22 Toxaphene-1

R.T.: 0.000 min
 Exp R.T.: 6.448 min
 Response: 0
 Conc: N.D.

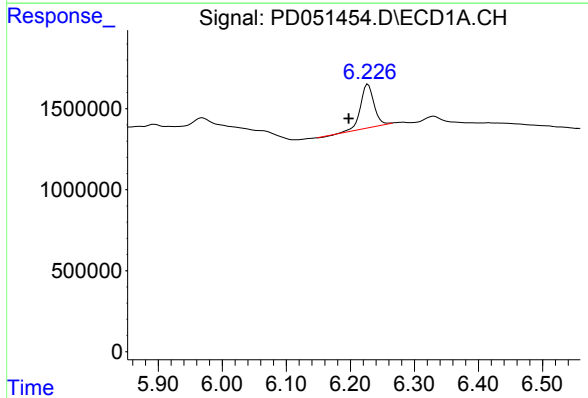


#23 Toxaphene-2
 R.T.: 0.000 min
 Exp R.T.: 5.588 min
 Response: 0
 Conc: N.D.

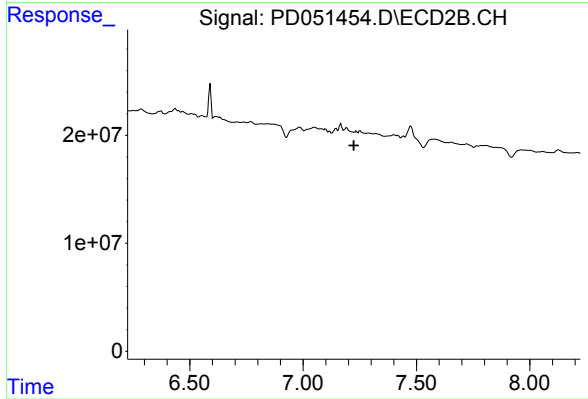
Instrument :
 ECD_D
 ClientSampleId :



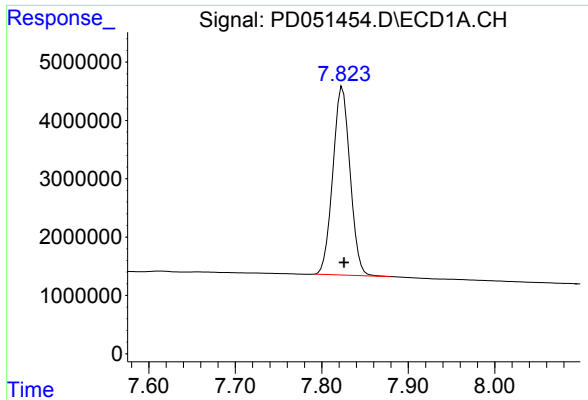
#23 Toxaphene-2
 R.T.: 6.590 min
 Delta R.T.: -0.049 min
 Response: 22240534
 Conc: 76.75 ng/ml



#25 Toxaphene-4
 R.T.: 6.228 min
 Delta R.T.: 0.030 min
 Response: 4018506
 Conc: 104.08 ng/ml



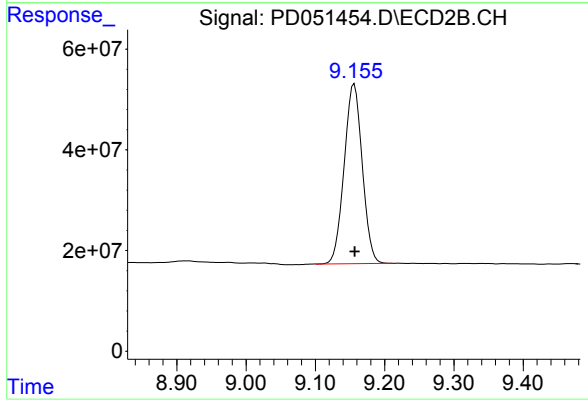
#25 Toxaphene-4
 R.T.: 0.000 min
 Exp R.T.: 7.224 min
 Response: 0
 Conc: N.D.



#27 Decachlorobiphenyl

R.T.: 7.824 min
Delta R.T.: -0.002 min
Response: 44465635
Conc: 36.97 ng/ml

Instrument :
ECD_D
ClientSampleId :



#27 Decachlorobiphenyl

R.T.: 9.156 min
Delta R.T.: 0.000 min
Response: 647141937
Conc: 34.14 ng/ml