

Data Path : Z:\pestpcbsrv\HPCHEM1\ECD_D\Data\PD022924\
 Data File : PD081801.D
 Signal(s) : Signal #1: ECD1A.ch Signal #2: ECD2B.ch
 Acq On : 29 Feb 2024 10:20
 Operator : AR\AJ
 Sample : TOXAPHENE406
 Misc :
 ALS Vial : 4 Sample Multiplier: 1

Integration File signal 1: autoint1.e
 Integration File signal 2: autoint2.e
 Quant Time: Feb 29 22:05:29 2024
 Quant Method : Z:\pestpcbsrv\HPCHEM1\ECD_D\Method\PD021224CLP.M
 Quant Title : GC Extractables
 QLast Update : Mon Feb 12 17:06:05 2024
 Response via : Initial Calibration
 Integrator: ChemStation

Volume Inj. : 1 µl
 Signal #1 Phase : ZB-MR2 Signal #2 Phase: ZB-MR2
 Signal #1 Info : 30M x 0.32mm x0.5 Signal #2 Info : 30M x 0.32mm x 0.25µm

Compound	RT#1	RT#2	Resp#1	Resp#2	ng/ml	ng/ml

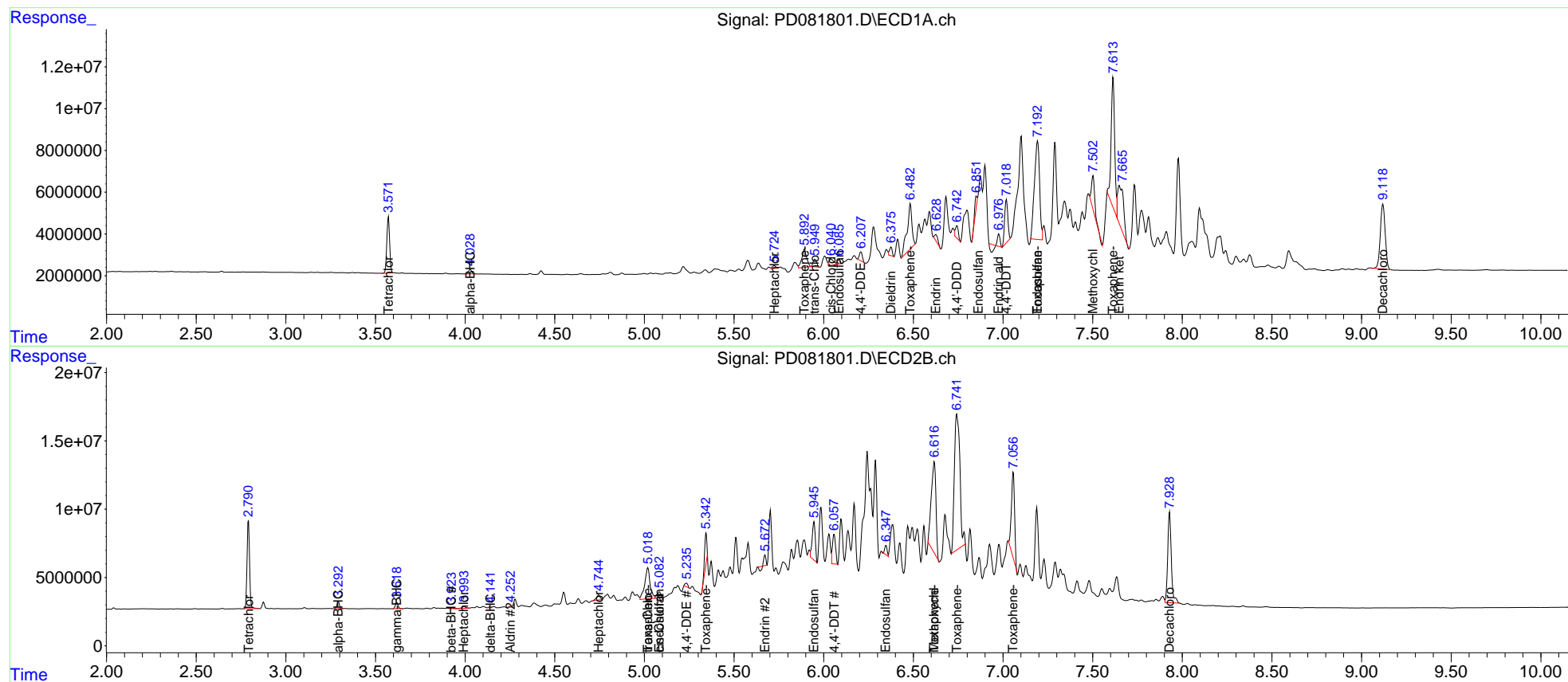
System Monitoring Compounds						
1) SA Tetrachlo...	3.572	2.792	29364656	63057709	21.479	25.721
27) SA Decachlor...	9.119	7.929	58892522	91084314	30.524	36.717
Target Compounds						
2) A alpha-BHC	4.029	3.293	2518527	5117679	1.078	1.331
3) MA gamma-BHC...	0.000	3.620	0	4815169	N.D.	1.329
4) MA Heptachlor	0.000	3.994f	0	1794735	N.D.	0.506
5) MB Aldrin	0.000	4.253	0	544289	N.D.	0.161
6) B beta-BHC	0.000	3.925	0	705405	N.D.	0.417
7) B delta-BHC	0.000	4.143	0	607842	N.D.	0.162
8) B Heptachlo...	5.725	4.745	1868909	5318997	0.825	1.658 #
9) A Endosulfan I	6.087	5.083f	2441128	6865998	1.159	2.293 #
10) B trans-Chl...	5.951	5.020	5022280	47277813	2.294	15.150 #
11) B cis-Chlor...	6.042	5.083	5351348	6865998	2.376	2.143
12) B 4,4'-DDE	6.208	5.235	4988489	3047478	2.324	1.031 #
13) MA Dieldrin	6.376	5.373	4518058	-2737587	2.035	N.D. #
14) MA Endrin	6.626	5.673	3218826	3639316	1.715	1.267 #
15) B Endosulfa...	6.852	5.946	3713115	33618587	1.923	11.911 #
16) A 4,4'-DDD	6.744	5.821	6971701	-253668	4.197	N.D. #
17) MA 4,4'-DDT	7.019f	6.058	25581262	26648603	14.724	10.320 #
19) B Endosulfa...	7.193	6.348	94182472	6574913	51.442	2.451 #
20) A Methoxychlor	7.503	6.617	20496747	120.4E6	22.345	90.115 #
21) B Endrin ke...	7.649	6.868	45580365	-15676370	23.572	N.D. #
22) Toxaphene-1	5.893	5.020	16208640	47277813	2481.573	2887.691
23) Toxaphene-2	6.483	5.345	40927742	23548171	2158.905	1381.667 #
24) Toxaphene-3	0.000	6.617	0	120.4E6	N.D.	2056.976
25) Toxaphene-4	7.193	6.743	94182472	212.5E6	2380.897	2669.990
26) Toxaphene-5	7.614	7.058	86214449	73971002	2906.933	2281.153

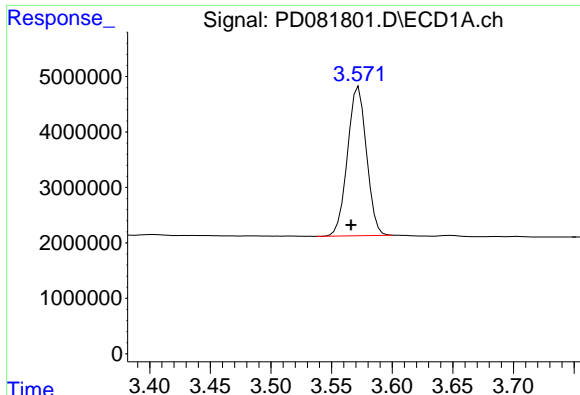
(f)=RT Delta > 1/2 Window (#)=Amounts differ by > 25% (m)=manual int.

Data Path : Z:\pestpcbsrv\HPCHEM1\ECD_D\Data\PD022924\
 Data File : PD081801.D
 Signal(s) : Signal #1: ECD1A.ch Signal #2: ECD2B.ch
 Acq On : 29 Feb 2024 10:20
 Operator : AR\AJ
 Sample : TOXAPHENE406
 Misc :
 ALS Vial : 4 Sample Multiplier: 1

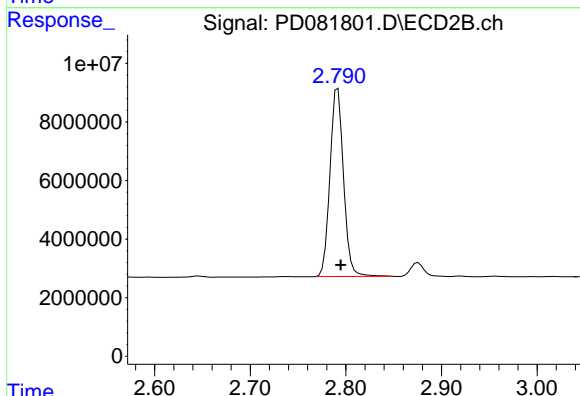
Integration File signal 1: autoint1.e
 Integration File signal 2: autoint2.e
 Quant Time: Feb 29 22:05:29 2024
 Quant Method : Z:\pestpcbsrv\HPCHEM1\ECD_D\Method\PD021224CLP.M
 Quant Title : GC Extractables
 QLast Update : Mon Feb 12 17:06:05 2024
 Response via : Initial Calibration
 Integrator: ChemStation

Volume Inj. : 1 µl
 Signal #1 Phase : ZB-MR1 Signal #2 Phase: ZB-MR2
 Signal #1 Info : 30M x 0.32mm x0.5 Signal #2 Info : 30M x 0.32mm x 0.25µm

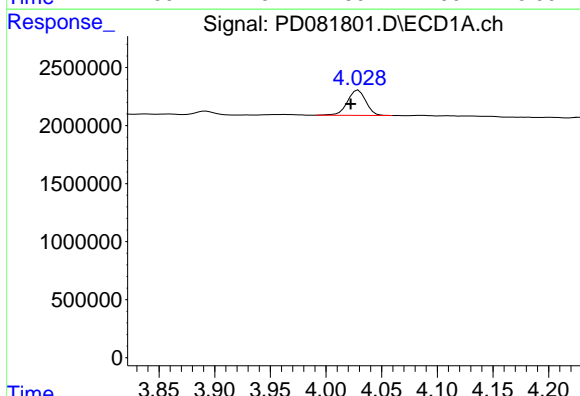




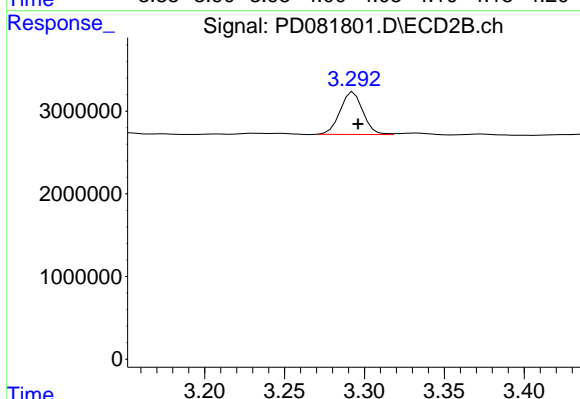
#1 Tetrachloro-m-xylene
 R.T.: 3.572 min
 Delta R.T.: 0.006 min
 Response: 29364656
 Conc: 21.48 ng/ml



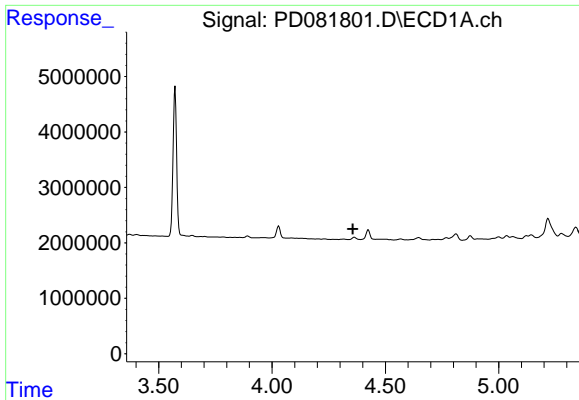
#1 Tetrachloro-m-xylene
 R.T.: 2.792 min
 Delta R.T.: -0.003 min
 Response: 63057709
 Conc: 25.72 ng/ml



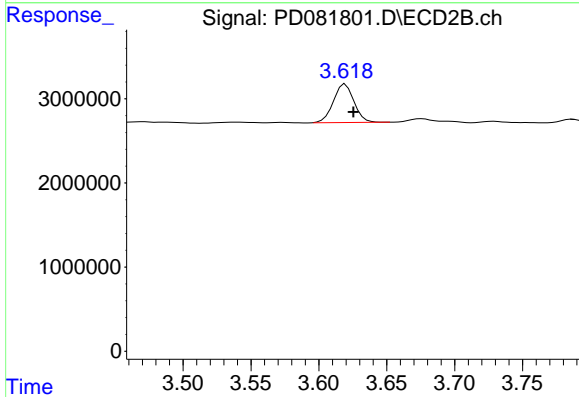
#2 alpha-BHC
 R.T.: 4.029 min
 Delta R.T.: 0.007 min
 Response: 2518527
 Conc: 1.08 ng/ml



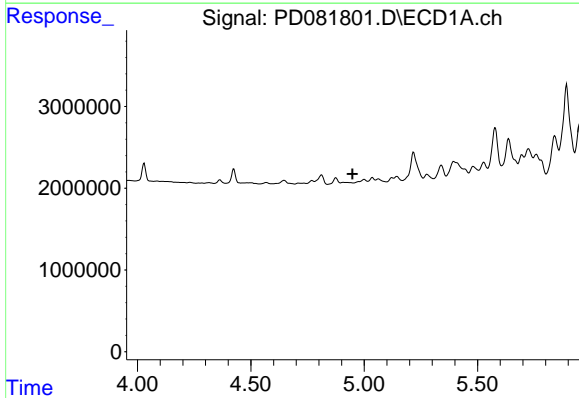
#2 alpha-BHC
 R.T.: 3.293 min
 Delta R.T.: -0.003 min
 Response: 5117679
 Conc: 1.33 ng/ml



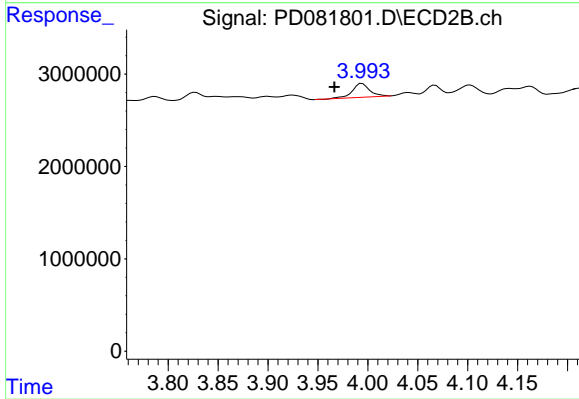
#3 gamma-BHC (Lindane)
 R.T.: 0.000 min
 Exp R.T. : 4.356 min
 Response: 0
 Conc: N.D.



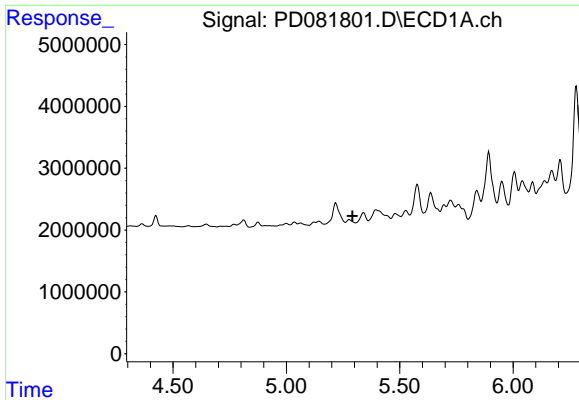
#3 gamma-BHC (Lindane)
 R.T.: 3.620 min
 Delta R.T.: -0.006 min
 Response: 4815169
 Conc: 1.33 ng/ml



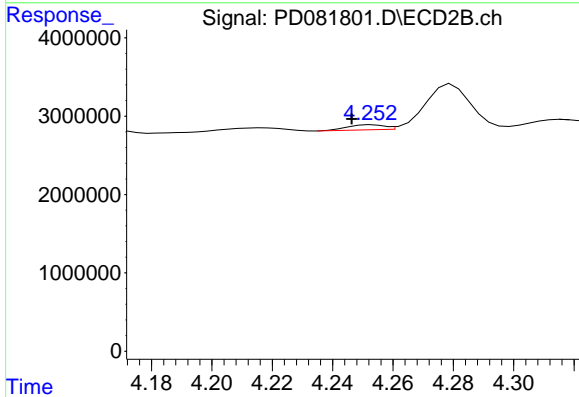
#4 Heptachlor
 R.T.: 0.000 min
 Exp R.T. : 4.949 min
 Response: 0
 Conc: N.D.



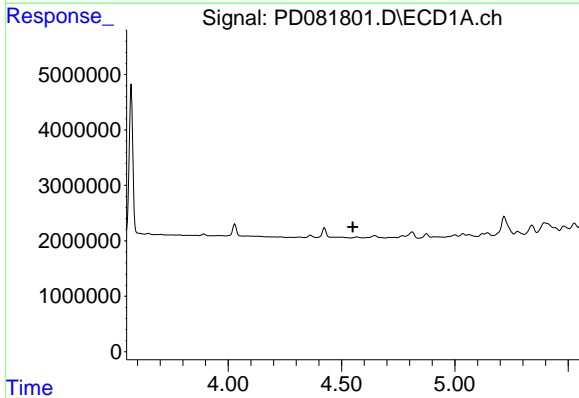
#4 Heptachlor
 R.T.: 3.994 min
 Delta R.T.: 0.028 min
 Response: 1794735
 Conc: 0.51 ng/ml



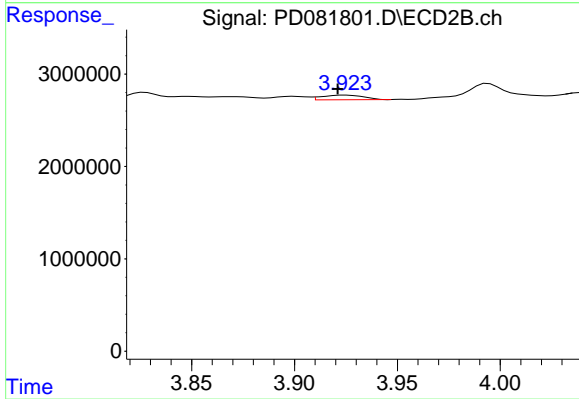
#5 Aldrin
 R.T.: 0.000 min
 Exp R.T. : 5.292 min
 Response: 0
 Conc: N.D.



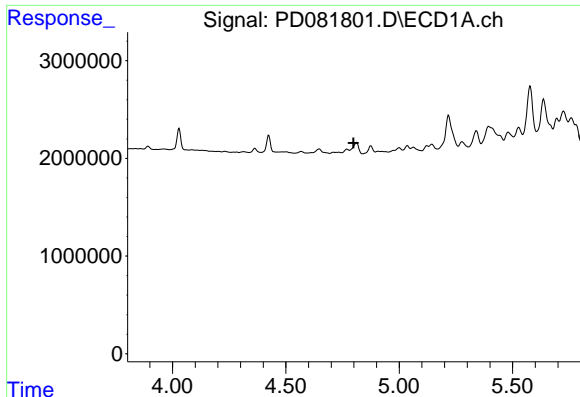
#5 Aldrin
 R.T.: 4.253 min
 Delta R.T.: 0.007 min
 Response: 544289
 Conc: 0.16 ng/ml



#6 beta-BHC
 R.T.: 0.000 min
 Exp R.T. : 4.550 min
 Response: 0
 Conc: N.D.

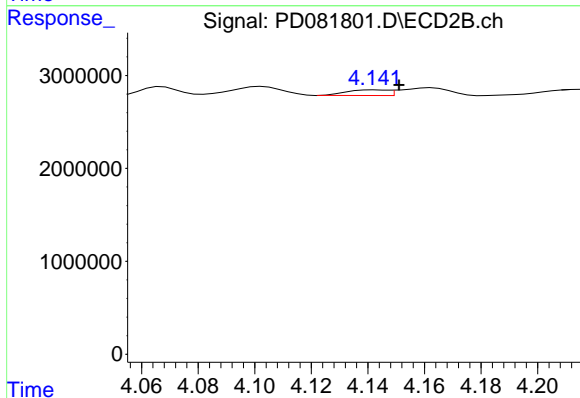


#6 beta-BHC
 R.T.: 3.925 min
 Delta R.T.: 0.004 min
 Response: 705405
 Conc: 0.42 ng/ml



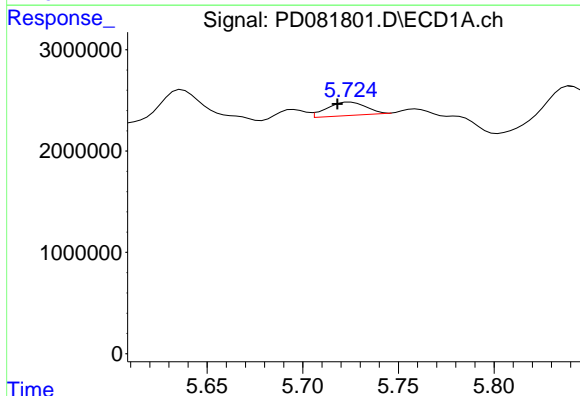
#7 delta-BHC

R.T.: 0.000 min
 Exp R.T. : 4.799 min
 Response: 0
 Conc: N.D.



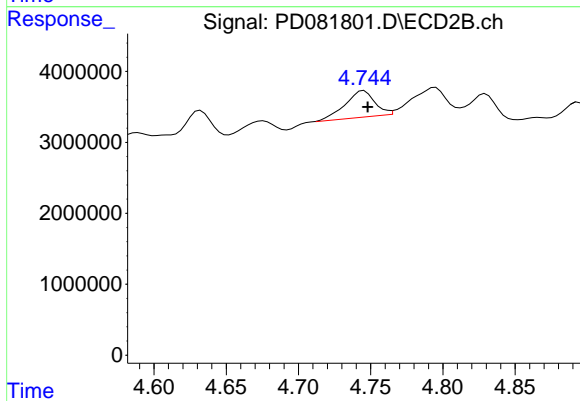
#7 delta-BHC

R.T.: 4.143 min
 Delta R.T.: -0.008 min
 Response: 607842
 Conc: 0.16 ng/ml



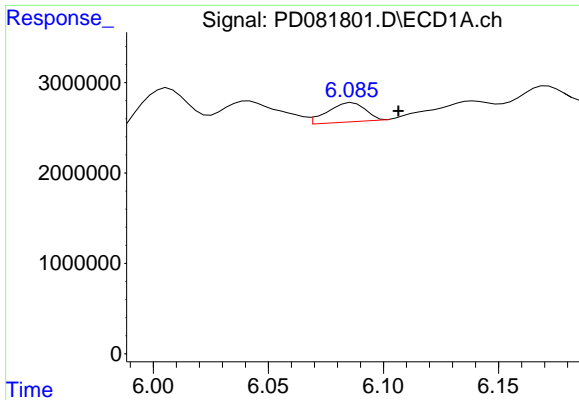
#8 Heptachlor epoxide

R.T.: 5.725 min
 Delta R.T.: 0.007 min
 Response: 1868909
 Conc: 0.83 ng/ml



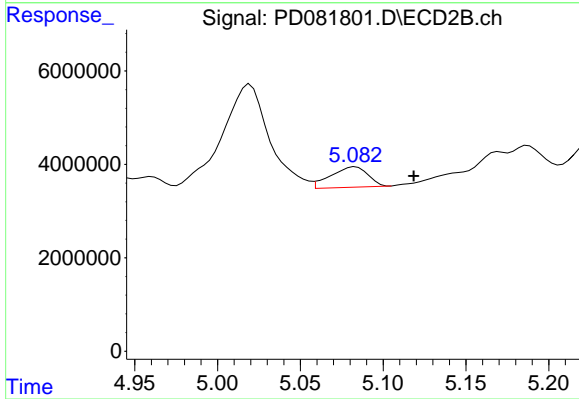
#8 Heptachlor epoxide

R.T.: 4.745 min
 Delta R.T.: -0.003 min
 Response: 5318997
 Conc: 1.66 ng/ml



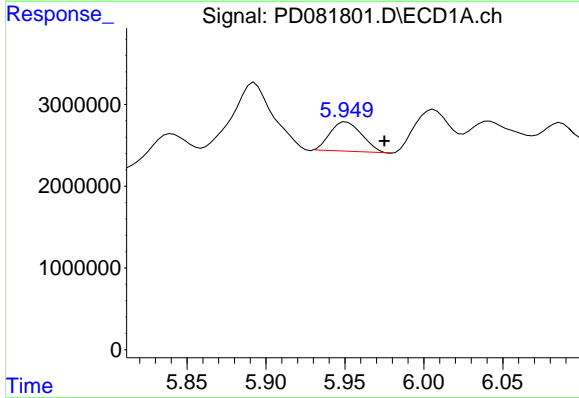
#9 Endosulfan I

R.T.: 6.087 min
Delta R.T.: -0.020 min
Response: 2441128
Conc: 1.16 ng/ml



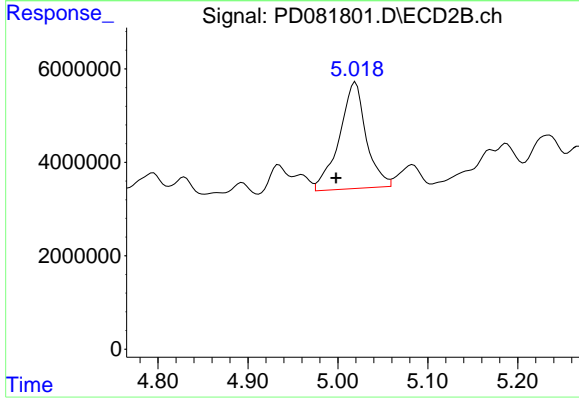
#9 Endosulfan I

R.T.: 5.083 min
Delta R.T.: -0.035 min
Response: 6865998
Conc: 2.29 ng/ml



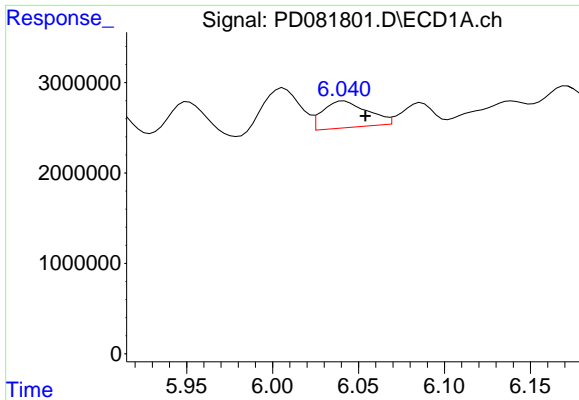
#10 trans-Chlordane

R.T.: 5.951 min
Delta R.T.: -0.024 min
Response: 5022280
Conc: 2.29 ng/ml

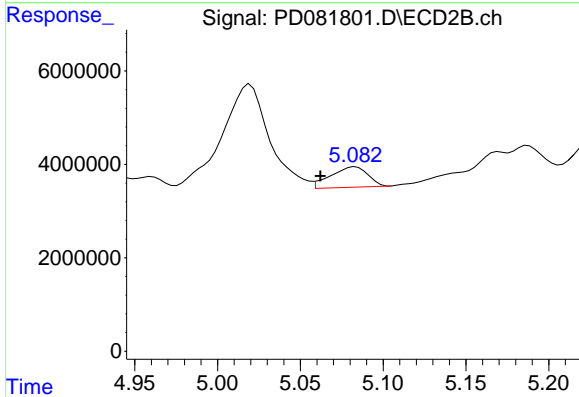


#10 trans-Chlordane

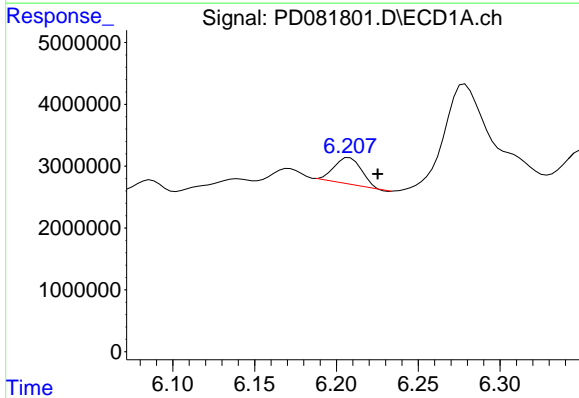
R.T.: 5.020 min
Delta R.T.: 0.022 min
Response: 47277813
Conc: 15.15 ng/ml



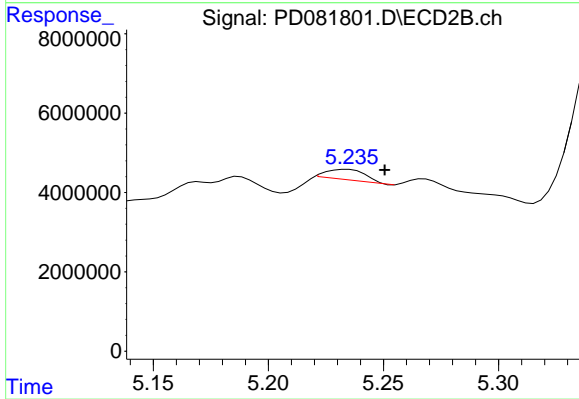
#11 cis-Chlordane
R.T.: 6.042 min
Delta R.T.: -0.013 min
Response: 5351348
Conc: 2.38 ng/ml



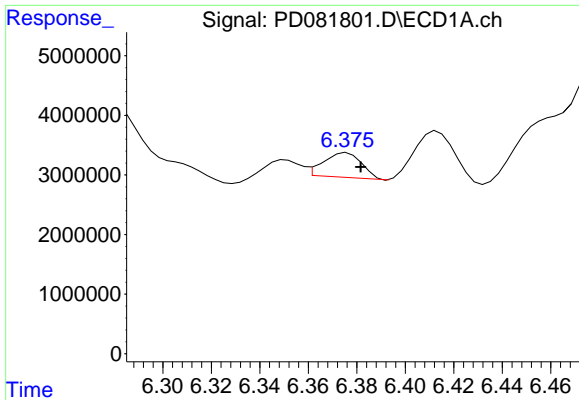
#11 cis-Chlordane
R.T.: 5.083 min
Delta R.T.: 0.021 min
Response: 6865998
Conc: 2.14 ng/ml



#12 4,4'-DDE
R.T.: 6.208 min
Delta R.T.: -0.017 min
Response: 4988489
Conc: 2.32 ng/ml

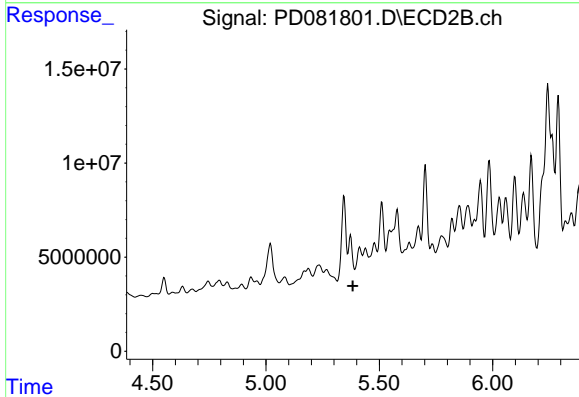


#12 4,4'-DDE
R.T.: 5.235 min
Delta R.T.: -0.016 min
Response: 3047478
Conc: 1.03 ng/ml



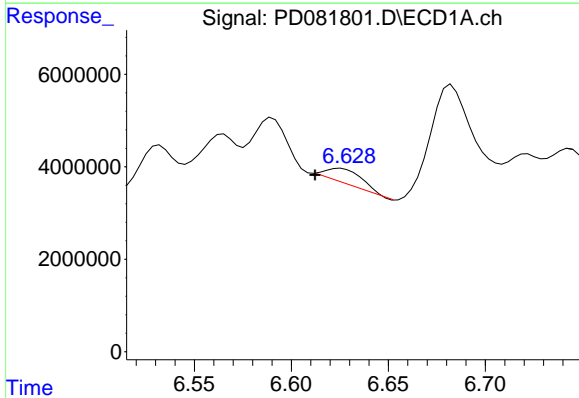
#13 Dieldrin

R.T.: 6.376 min
Delta R.T.: -0.006 min
Response: 4518058
Conc: 2.03 ng/ml



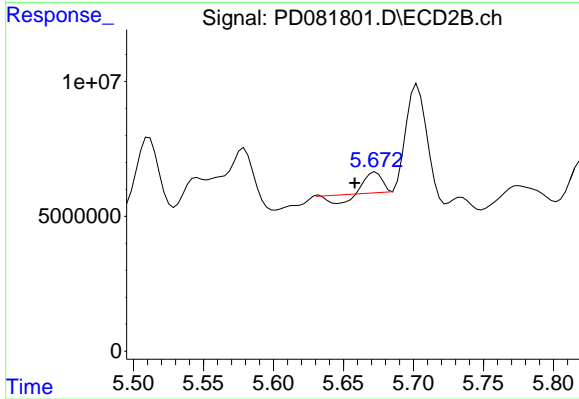
#13 Dieldrin

R.T.: 5.373 min
Delta R.T.: -0.010 min
Response: -2737587
Conc: N.D.



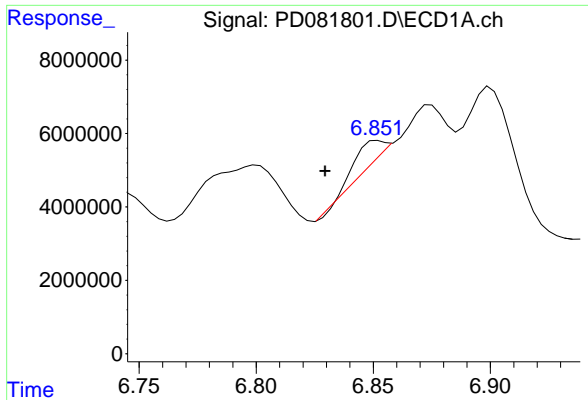
#14 Endrin

R.T.: 6.626 min
Delta R.T.: 0.014 min
Response: 3218826
Conc: 1.72 ng/ml

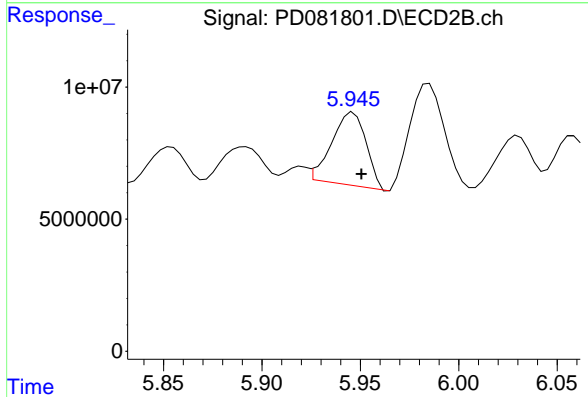


#14 Endrin

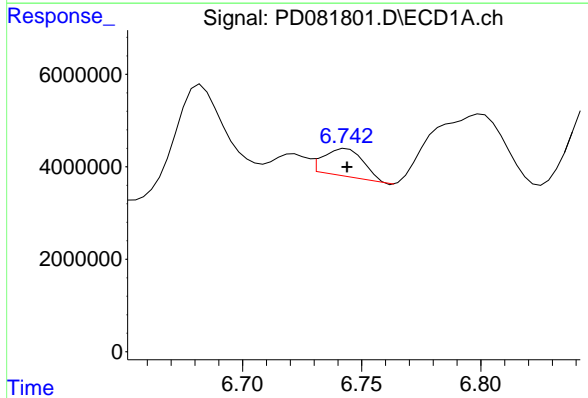
R.T.: 5.673 min
Delta R.T.: 0.015 min
Response: 3639316
Conc: 1.27 ng/ml



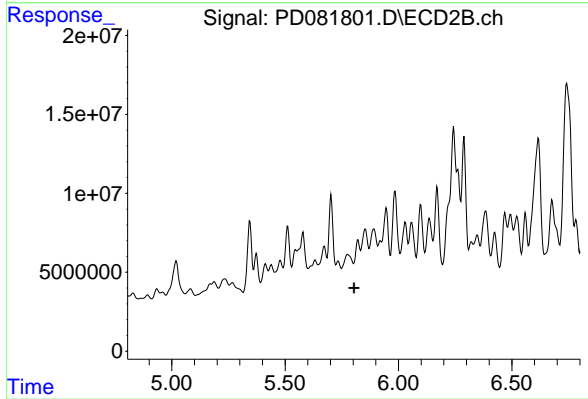
#15 Endosulfan II
 R.T.: 6.852 min
 Delta R.T.: 0.023 min
 Response: 3713115
 Conc: 1.92 ng/ml



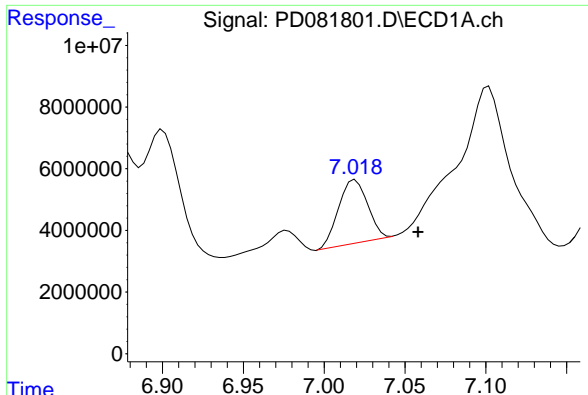
#15 Endosulfan II
 R.T.: 5.946 min
 Delta R.T.: -0.004 min
 Response: 33618587
 Conc: 11.91 ng/ml



#16 4,4'-DDD
 R.T.: 6.744 min
 Delta R.T.: 0.000 min
 Response: 6971701
 Conc: 4.20 ng/ml

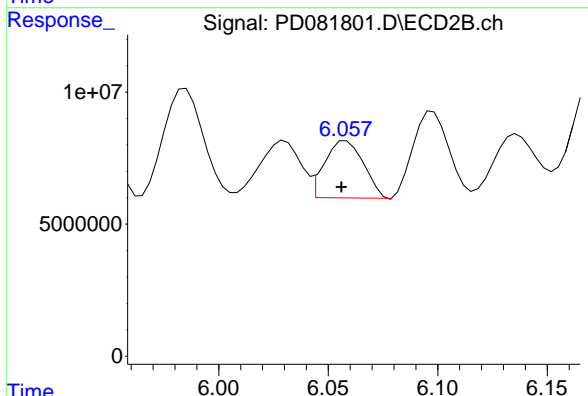


#16 4,4'-DDD
 R.T.: 5.821 min
 Delta R.T.: 0.016 min
 Response: -253668
 Conc: N.D.



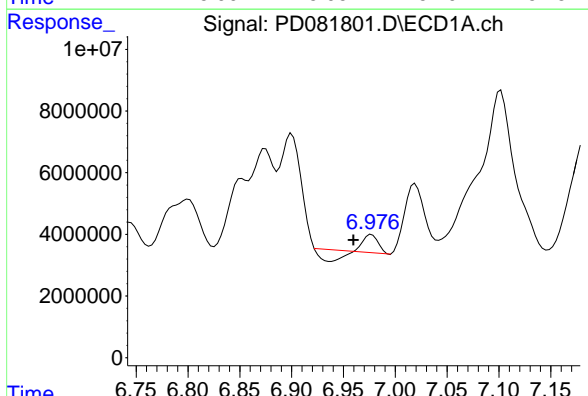
#17 4,4'-DDT

R.T.: 7.019 min
 Delta R.T.: -0.039 min
 Response: 25581262
 Conc: 14.72 ng/ml



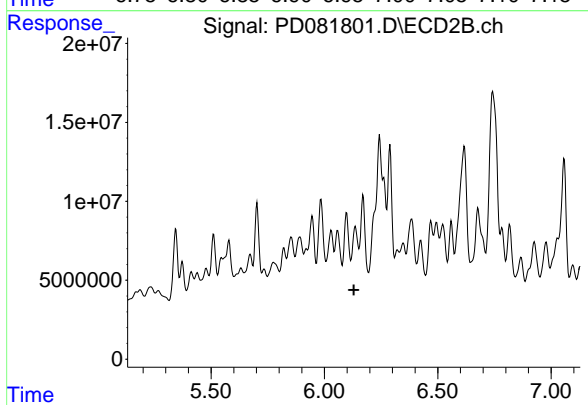
#17 4,4'-DDT

R.T.: 6.058 min
 Delta R.T.: 0.002 min
 Response: 26648603
 Conc: 10.32 ng/ml



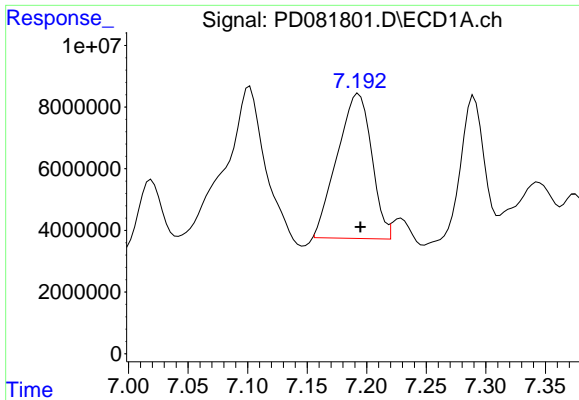
#18 Endrin aldehyde

R.T.: 6.977 min
 Delta R.T.: 0.017 min
 Response: 1265160
 Conc: 0.85 ng/ml

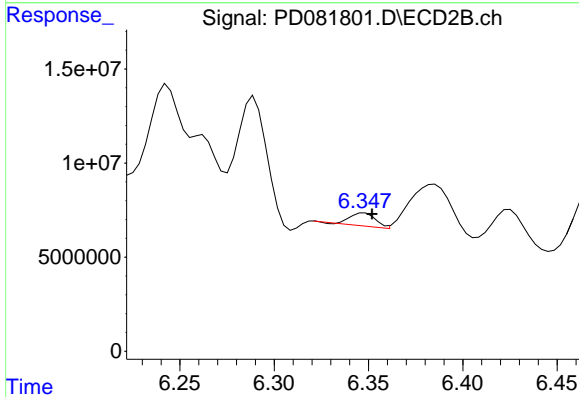


#18 Endrin aldehyde

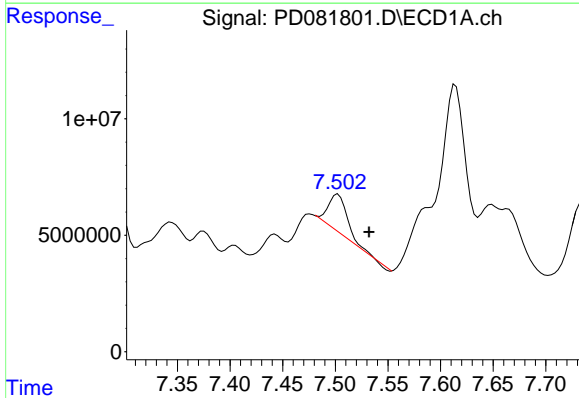
R.T.: 6.136 min
 Delta R.T.: 0.006 min
 Response: -9743080
 Conc: N.D.



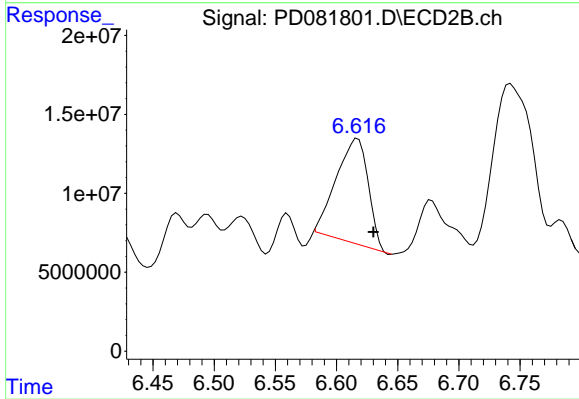
#19 Endosulfan Sulfate
R.T.: 7.193 min
Delta R.T.: -0.002 min
Response: 94182472
Conc: 51.44 ng/ml



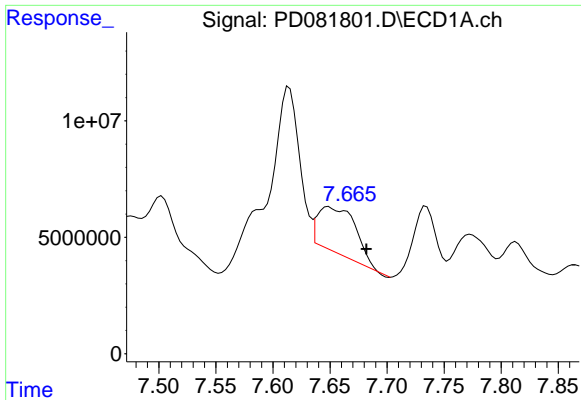
#19 Endosulfan Sulfate
R.T.: 6.348 min
Delta R.T.: -0.004 min
Response: 6574913
Conc: 2.45 ng/ml



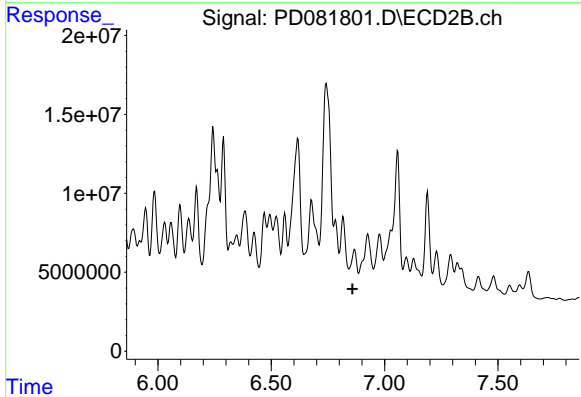
#20 Methoxychlor
R.T.: 7.503 min
Delta R.T.: -0.030 min
Response: 20496747
Conc: 22.35 ng/ml



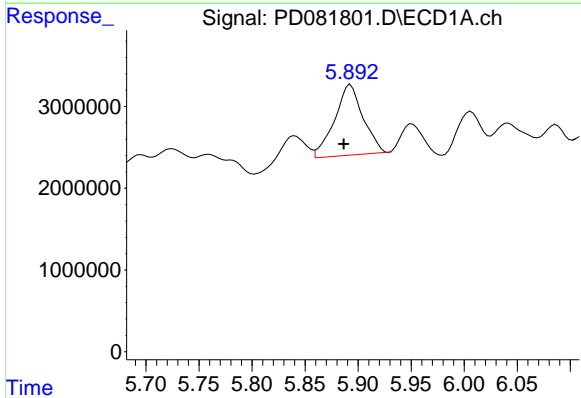
#20 Methoxychlor
R.T.: 6.617 min
Delta R.T.: -0.013 min
Response: 120398390
Conc: 90.12 ng/ml



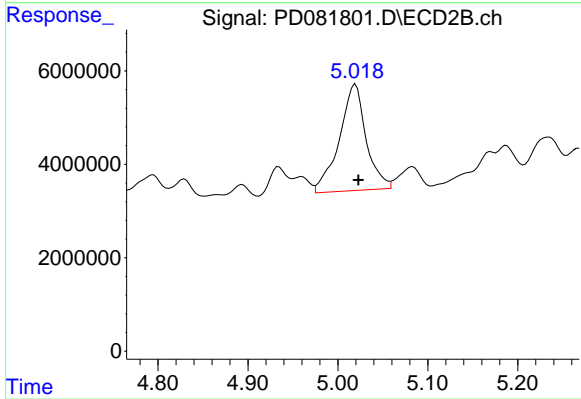
#21 Endrin ketone
 R.T.: 7.649 min
 Delta R.T.: -0.033 min
 Response: 45580365
 Conc: 23.57 ng/ml



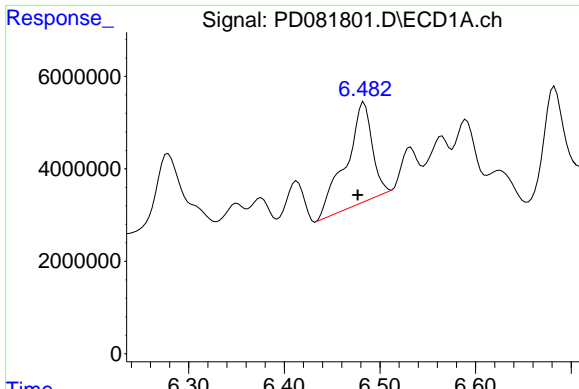
#21 Endrin ketone
 R.T.: 6.868 min
 Delta R.T.: 0.009 min
 Response: -15676370
 Conc: N.D.



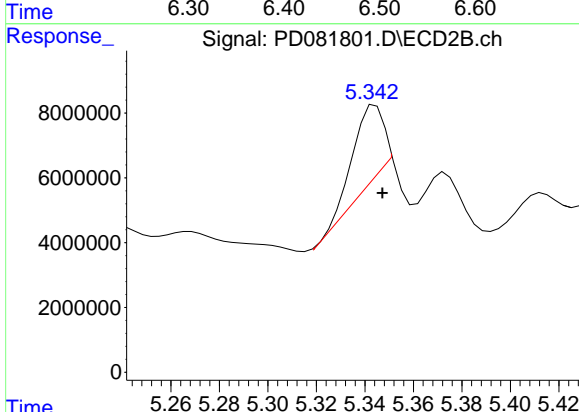
#22 Toxaphene-1
 R.T.: 5.893 min
 Delta R.T.: 0.006 min
 Response: 16208640
 Conc: 2481.57 ng/ml



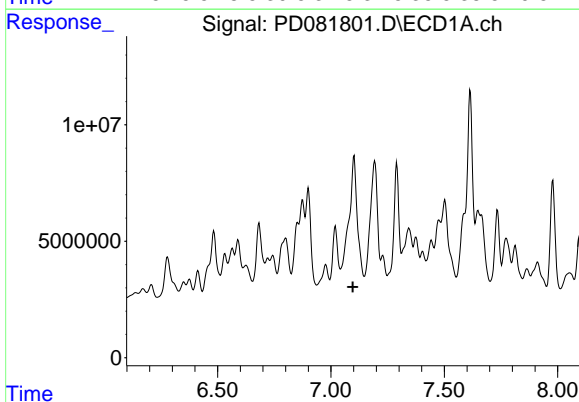
#22 Toxaphene-1
 R.T.: 5.020 min
 Delta R.T.: -0.003 min
 Response: 47277813
 Conc: 2887.69 ng/ml



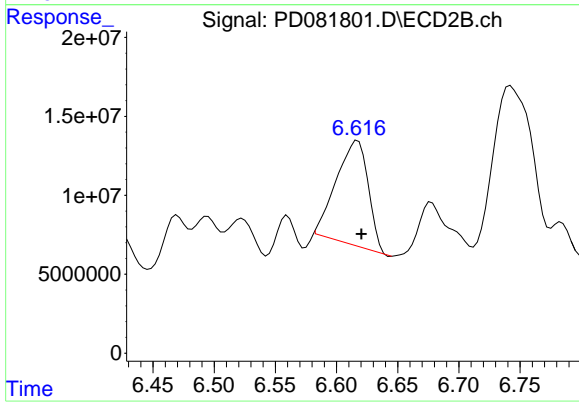
#23 Toxaphene-2
 R.T.: 6.483 min
 Delta R.T.: 0.007 min
 Response: 40927742
 Conc: 2158.90 ng/ml



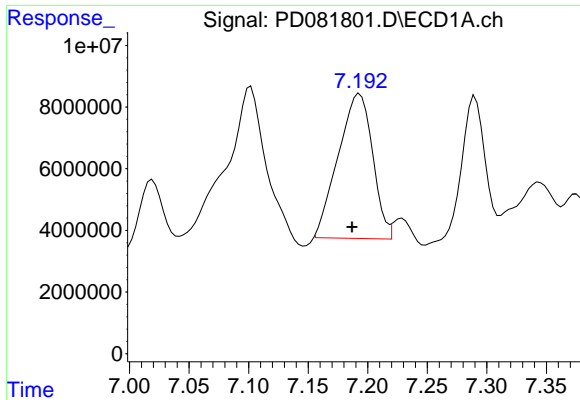
#23 Toxaphene-2
 R.T.: 5.345 min
 Delta R.T.: -0.003 min
 Response: 23548171
 Conc: 1381.67 ng/ml



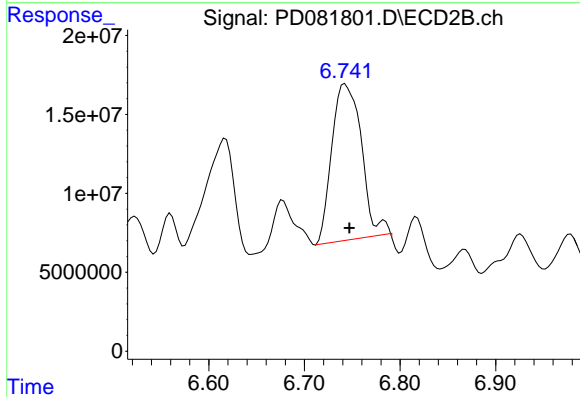
#24 Toxaphene-3
 R.T.: 0.000 min
 Exp R.T. : 7.096 min
 Response: 0
 Conc: N.D.



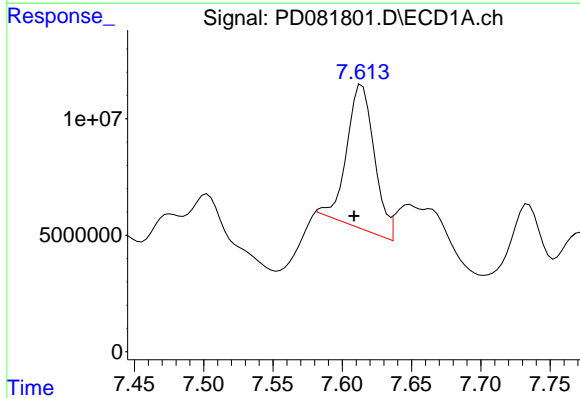
#24 Toxaphene-3
 R.T.: 6.617 min
 Delta R.T.: -0.003 min
 Response: 120398390
 Conc: 2056.98 ng/ml



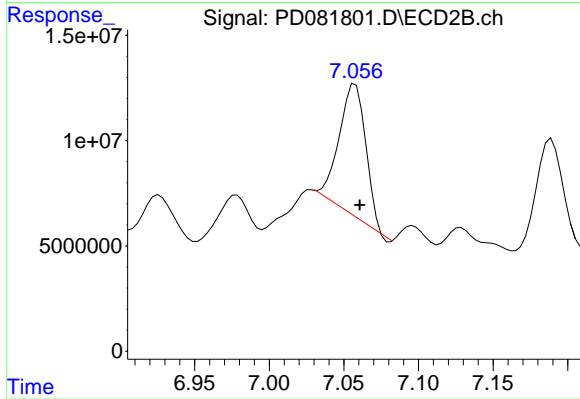
#25 Toxaphene-4
 R.T.: 7.193 min
 Delta R.T.: 0.006 min
 Response: 94182472
 Conc: 2380.90 ng/ml



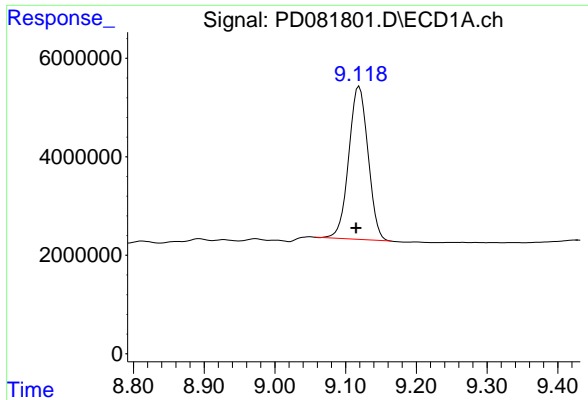
#25 Toxaphene-4
 R.T.: 6.743 min
 Delta R.T.: -0.004 min
 Response: 212467593
 Conc: 2669.99 ng/ml



#26 Toxaphene-5
 R.T.: 7.614 min
 Delta R.T.: 0.006 min
 Response: 86214449
 Conc: 2906.93 ng/ml

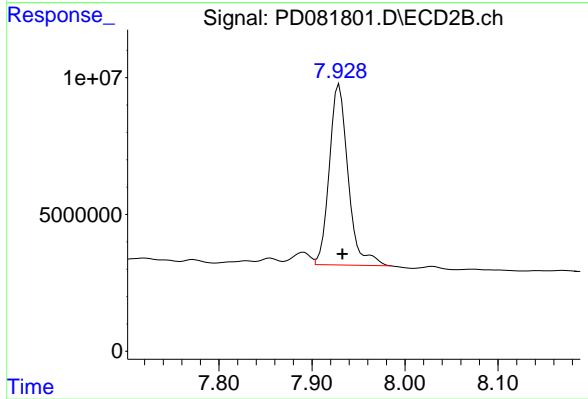


#26 Toxaphene-5
 R.T.: 7.058 min
 Delta R.T.: -0.003 min
 Response: 73971002
 Conc: 2281.15 ng/ml



#27 Decachlorobiphenyl

R.T.: 9.119 min
Delta R.T.: 0.004 min
Response: 58892522
Conc: 30.52 ng/ml



#27 Decachlorobiphenyl

R.T.: 7.929 min
Delta R.T.: -0.003 min
Response: 91084314
Conc: 36.72 ng/ml