

Data Path : Z:\pestpcbsrv\HPCHEM1\ECD_D\Data\PD022924\
 Data File : PD081807.D
 Signal(s) : Signal #1: ECD1A.ch Signal #2: ECD2B.ch
 Acq On : 29 Feb 2024 14:34
 Operator : AR\AJ
 Sample : INDB323
 Misc :
 ALS Vial : 92 Sample Multiplier: 1

Instrument :
 ECD_D
ClientSampleId :
 INDB3141

Manual Integrations
APPROVED

Reviewed By :Abdul Mirza 03/01/2024
 Supervised By :Ankita Jodhani 03/01/2024

Integration File signal 1: autoint1.e
 Integration File signal 2: autoint2.e
 Quant Time: Feb 29 22:07:27 2024
 Quant Method : Z:\pestpcbsrv\HPCHEM1\ECD_D\Method\PD021224CLP.M
 Quant Title : GC Extractables
 QLast Update : Mon Feb 12 17:06:05 2024
 Response via : Initial Calibration
 Integrator: ChemStation

Volume Inj. : 1 µl
 Signal #1 Phase : ZB-MR1 Signal #2 Phase: ZB-MR2
 Signal #1 Info : 30M x 0.32mm x0.5 Signal #2 Info : 30M x 0.32mm x 0.25µm

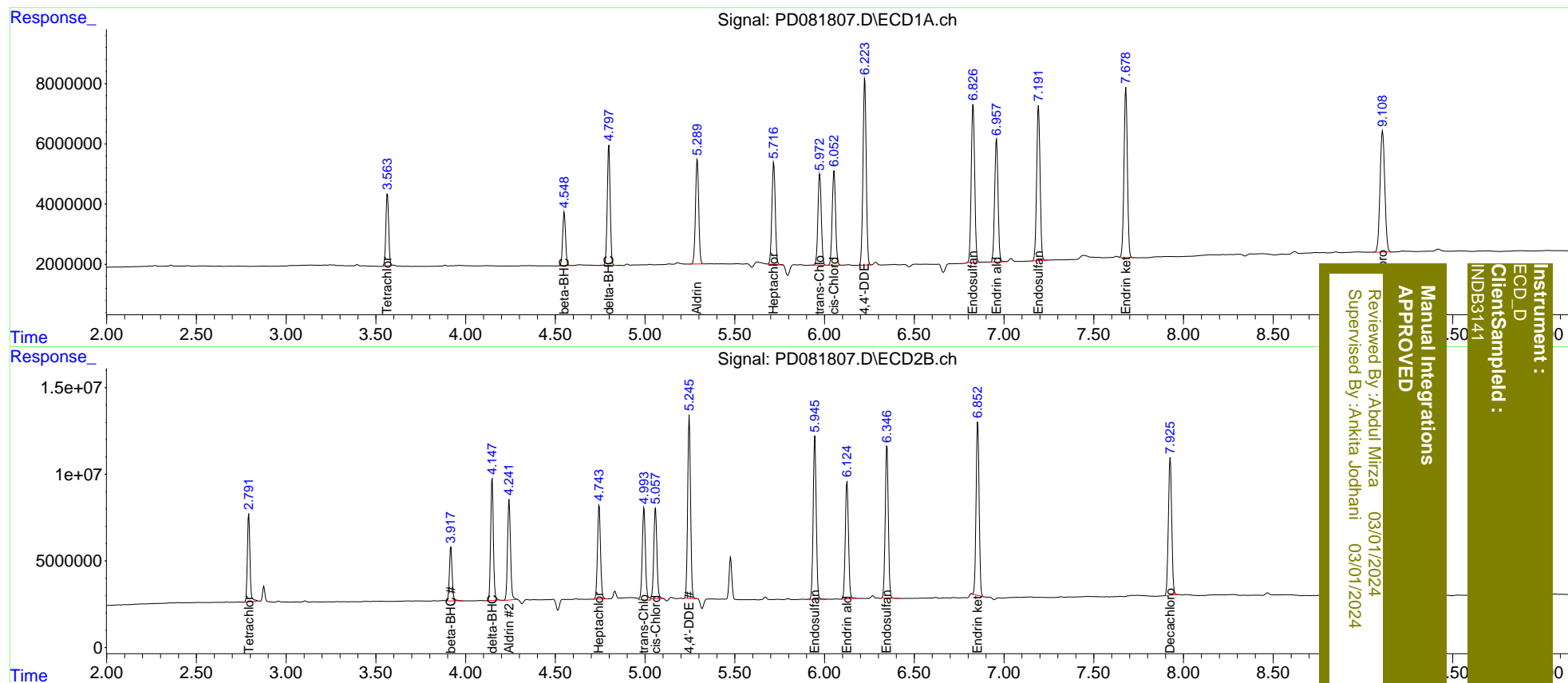
| Compound | RT#1 | RT#2 | Resp#1 | Resp#2 | ng/ml | ng/ml |
|-----------------------------|-------|-------|----------|----------|---------|---------|
| ----- | | | | | | |
| System Monitoring Compounds | | | | | | |
| 1) SA Tetrachlo... | 3.564 | 2.792 | 26049144 | 50940671 | 19.054 | 20.779 |
| 27) SA Decachlor... | 9.109 | 7.925 | 74104638 | 102.8E6 | 38.409 | 41.453m |
| Target Compounds | | | | | | |
| 5) MB Aldrin | 5.291 | 4.241 | 43457747 | 66315275 | 18.379 | 19.578m |
| 6) B beta-BHC | 4.550 | 3.918 | 19915213 | 33683274 | 19.164 | 19.935 |
| 7) B delta-BHC | 4.798 | 4.147 | 45528589 | 74230845 | 19.223 | 19.823m |
| 8) B Heptachlo... | 5.717 | 4.744 | 44167417 | 63242074 | 19.501 | 19.711 |
| 10) B trans-Chl... | 5.973 | 4.994 | 39508913 | 65066652 | 18.046 | 20.851 |
| 11) B cis-Chlor... | 6.053 | 5.057 | 40687957 | 63248837 | 18.065 | 19.744m |
| 12) B 4,4'-DDE | 6.224 | 5.246 | 77812896 | 116.6E6 | 36.249 | 39.441 |
| 15) B Endosulfa... | 6.826 | 5.946 | 69939422 | 111.1E6 | 36.230m | 39.366 |
| 18) B Endrin al... | 6.958 | 6.125 | 53663043 | 83808607 | 35.924 | 38.675 |
| 19) B Endosulfa... | 7.192 | 6.348 | 68175565 | 105.0E6 | 37.237 | 39.151 |
| 21) B Endrin ke... | 7.679 | 6.852 | 74515949 | 117.6E6 | 38.536 | 39.230m |
| ----- | | | | | | |

(f)=RT Delta > 1/2 Window (#)=Amounts differ by > 25% (m)=manual int.

Data Path : Z:\pestpcbsrv\HPCHEM1\ECD_D\Data\PD022924\
 Data File : PD081807.D
 Signal(s) : Signal #1: ECD1A.ch Signal #2: ECD2B.ch
 Acq On : 29 Feb 2024 14:34
 Operator : AR\AJ
 Sample : INDB323
 Misc :
 ALS Vial : 92 Sample Multiplier: 1

Integration File signal 1: autoint1.e
 Integration File signal 2: autoint2.e
 Quant Time: Feb 29 22:07:27 2024
 Quant Method : Z:\pestpcbsrv\HPCHEM1\ECD_D\Method\PD021224CLP.M
 Quant Title : GC Extractables
 QLast Update : Mon Feb 12 17:06:05 2024
 Response via : Initial Calibration
 Integrator: ChemStation

Volume Inj. : 1 µl
 Signal #1 Phase : ZB-MR1 Signal #2 Phase: ZB-MR2
 Signal #1 Info : 30M x 0.32mm x0.5 Signal #2 Info : 30M x 0.32mm x 0.25µm



Instrument : ECD_D
 Client/Sampled : INDB3141
 Manual Integrations APPROVED
 Reviewed By : Aboul Mirza 03/01/2024
 Supervised By : Ankitia Jodhani 03/01/2024