

Data Path : Z:\pestpcbsrv\HPCHEM1\ECD_D\Data\PD030122\
 Data File : PD068251.D
 Signal(s) : Signal #1: ECD1A.ch Signal #2: ECD2B.ch
 Acq On : 28 Feb 2022 17:42
 Operator : AR\AJ
 Sample : RESCHK
 Misc :
 ALS Vial : 24 Sample Multiplier: 1

Instrument :
 ECD_D
 ClientSampleId :
 RESCHK

Integration File signal 1: autoint1.e
 Integration File signal 2: autoint2.e
 Quant Time: Mar 01 06:50:41 2022
 Quant Method : Z:\pestpcbsrv\HPCHEM1\ECD_D\Method\PD030122.M
 Quant Title : GC Extractables
 QLast Update : Tue Mar 01 06:48:49 2022
 Response via : Initial Calibration
 Integrator: ChemStation

Volume Inj. : 2 µl
 Signal #1 Phase : ZB-MR2 Signal #2 Phase: ZB-MR1
 Signal #1 Info : 30M x 0.32mm x0.2 Signal #2 Info : 30M x 0.32mm x 0.50µm

Compound	RT#1	RT#2	Resp#1	Resp#2	ng/ml	ng/ml

System Monitoring Compounds						
1) SA Tetrachlo...	3.450	4.176	24422196	208.8E6	20.834	21.758
28) SA Decachlor...	8.215	9.373	23784240	123.0E6	20.438	20.745
Target Compounds						
9) A Endosulfan I	5.504	6.454	13883915	106.9E6	10.181	11.076
10) B gamma-Chl...	5.391	6.328	15305418	118.7E6	10.281	11.226
12) B 4,4'-DDE	5.617	6.552	26305772	201.8E6	19.286	20.640
13) MA Dieldrin	5.748	6.713	28693100	215.9E6	19.513	20.952
19) B Endosulfa...	6.663	7.486	22807244	146.9E6	18.098	18.884
20) A Methoxychlor	6.927	7.799	59115929	303.3E6	91.102	87.294
21) B Endrin ke...	7.156	7.961	27804114	167.4E6	18.885	19.937

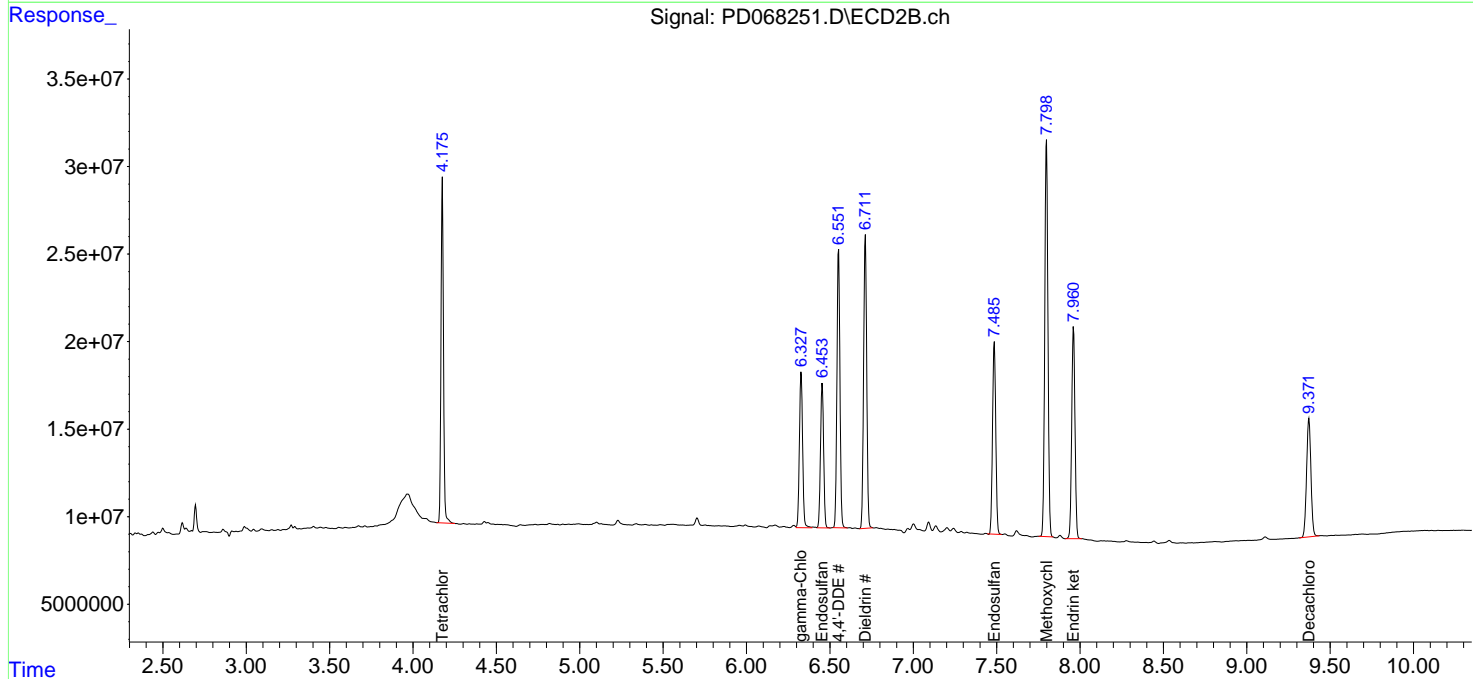
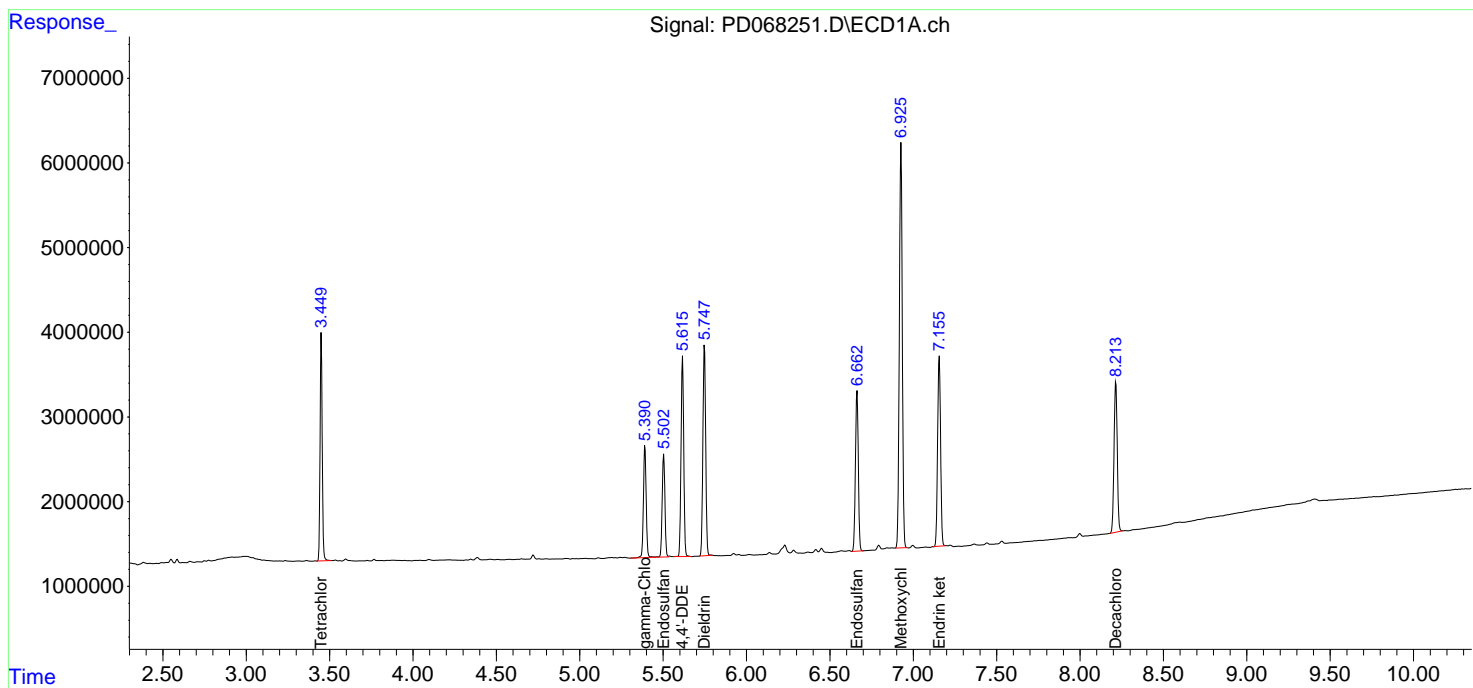
(f)=RT Delta > 1/2 Window (#)=Amounts differ by > 25% (m)=manual int.

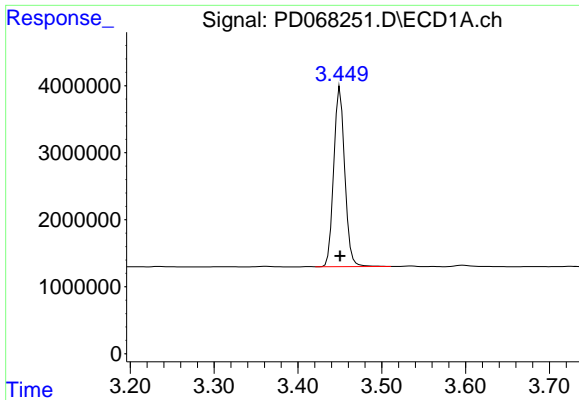
Data Path : Z:\pestpcbsrv\HPCHEM1\ECD_D\Data\PD030122\
 Data File : PD068251.D
 Signal(s) : Signal #1: ECD1A.ch Signal #2: ECD2B.ch
 Acq On : 28 Feb 2022 17:42
 Operator : AR\AJ
 Sample : RESCHK
 Misc :
 ALS Vial : 24 Sample Multiplier: 1

Instrument :
 ECD_D
 ClientSampleId :
 RESCHK

Integration File signal 1: autoint1.e
 Integration File signal 2: autoint2.e
 Quant Time: Mar 01 06:50:41 2022
 Quant Method : Z:\pestpcbsrv\HPCHEM1\ECD_D\Method\PD030122.M
 Quant Title : GC Extractables
 QLast Update : Tue Mar 01 06:48:49 2022
 Response via : Initial Calibration
 Integrator: ChemStation

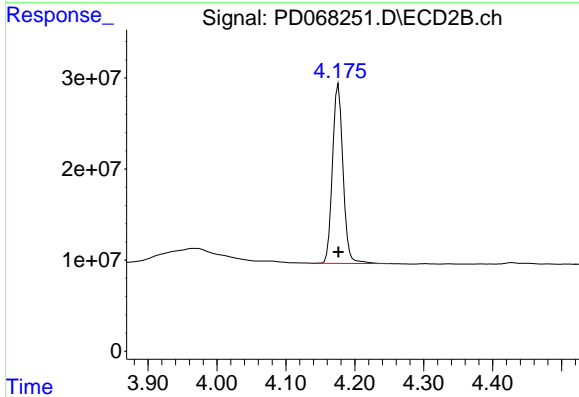
Volume Inj. : 2 µl
 Signal #1 Phase : ZB-MR2 Signal #2 Phase: ZB-MR1
 Signal #1 Info : 30M x 0.32mm x0.2 Signal #2 Info : 30M x 0.32mm x 0.50µm



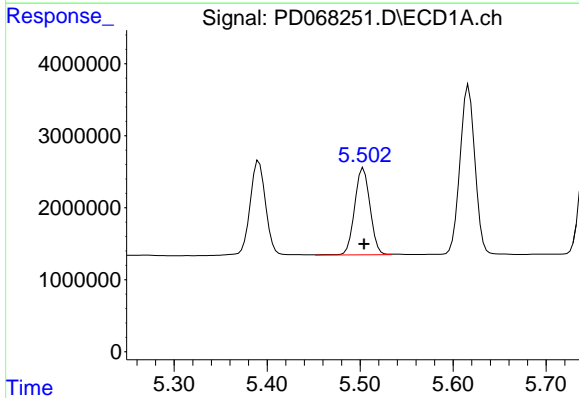


#1 Tetrachloro-m-xylene
 R.T.: 3.450 min
 Delta R.T.: 0.000 min
 Response: 24422196
 Conc: 20.83 ng/ml

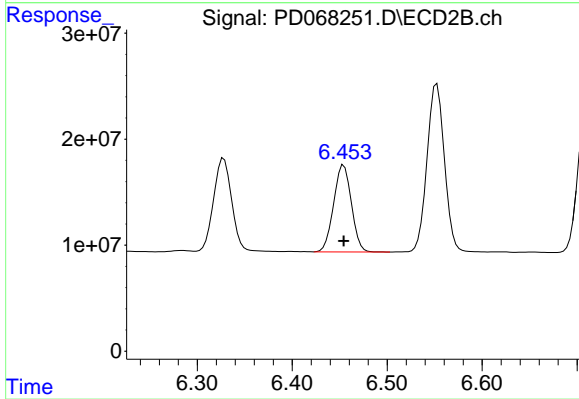
Instrument :
 ECD_D
 ClientSampleId :
 RESCHK



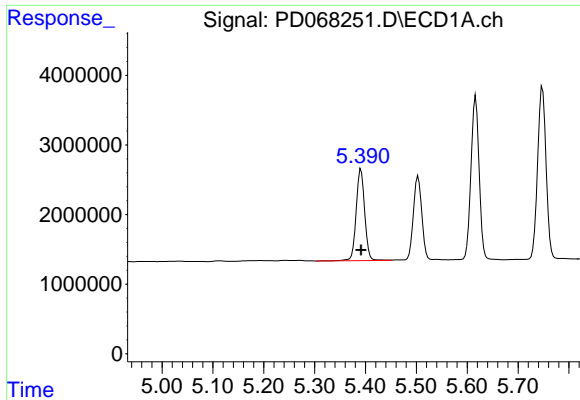
#1 Tetrachloro-m-xylene
 R.T.: 4.176 min
 Delta R.T.: 0.000 min
 Response: 208832103
 Conc: 21.76 ng/ml



#9 Endosulfan I
 R.T.: 5.504 min
 Delta R.T.: 0.000 min
 Response: 13883915
 Conc: 10.18 ng/ml



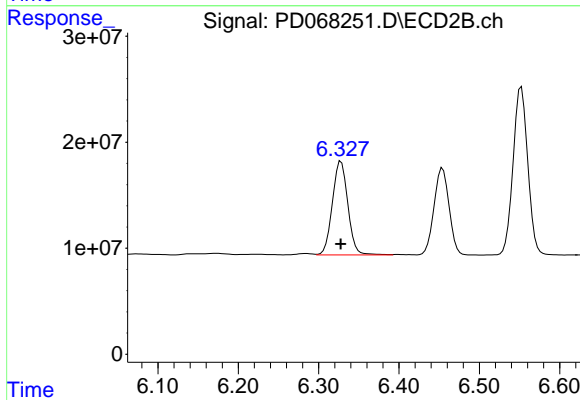
#9 Endosulfan I
 R.T.: 6.454 min
 Delta R.T.: 0.000 min
 Response: 106876043
 Conc: 11.08 ng/ml



#10 gamma-Chlordane

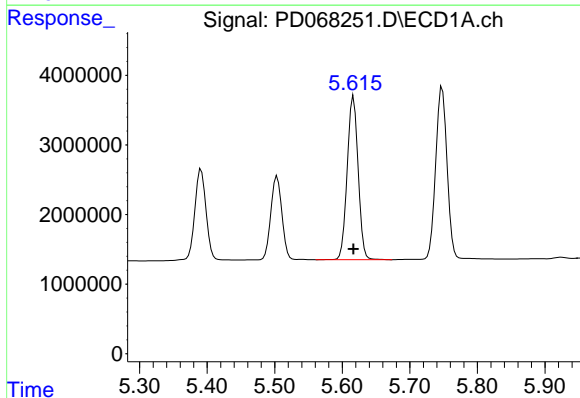
R.T.: 5.391 min
 Delta R.T.: 0.000 min
 Response: 15305418
 Conc: 10.28 ng/ml

Instrument :
 ECD_D
 ClientSampleId :
 RESCHK



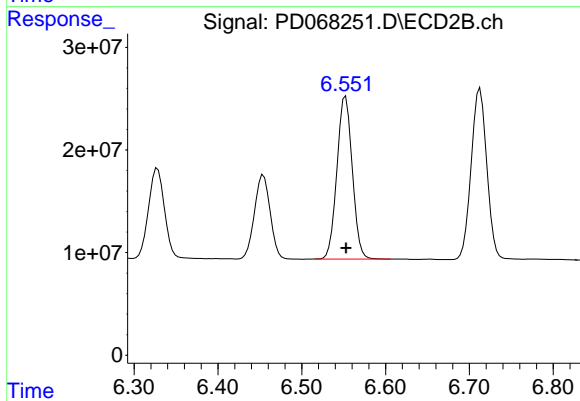
#10 gamma-Chlordane

R.T.: 6.328 min
 Delta R.T.: 0.000 min
 Response: 118706736
 Conc: 11.23 ng/ml



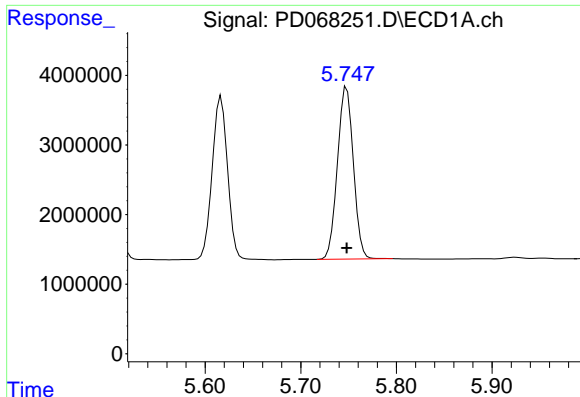
#12 4,4'-DDE

R.T.: 5.617 min
 Delta R.T.: 0.000 min
 Response: 26305772
 Conc: 19.29 ng/ml



#12 4,4'-DDE

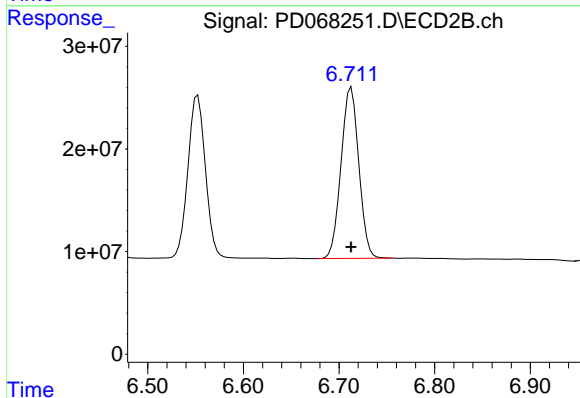
R.T.: 6.552 min
 Delta R.T.: 0.000 min
 Response: 201779351
 Conc: 20.64 ng/ml



#13 Dieldrin

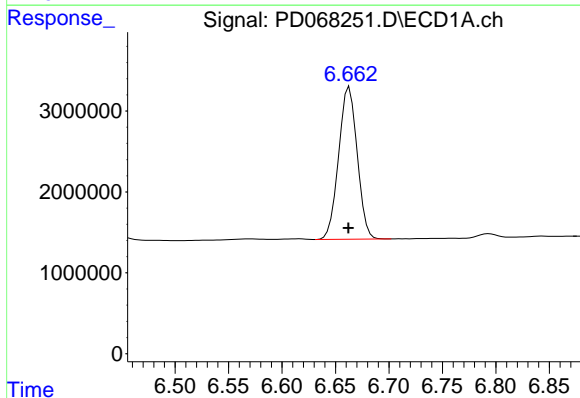
R.T.: 5.748 min
 Delta R.T.: 0.000 min
 Response: 28693100
 Conc: 19.51 ng/ml

Instrument :
 ECD_D
 ClientSampleId :
 RESCHK



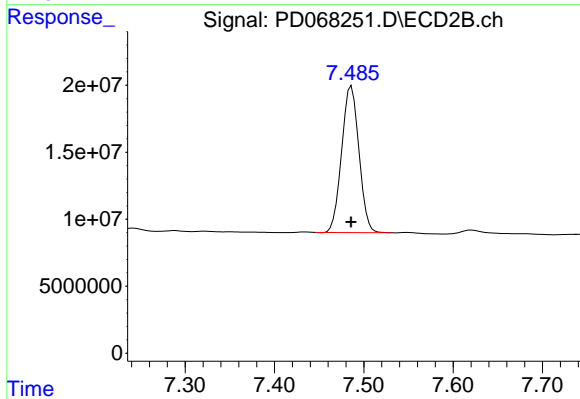
#13 Dieldrin

R.T.: 6.713 min
 Delta R.T.: 0.000 min
 Response: 215916148
 Conc: 20.95 ng/ml



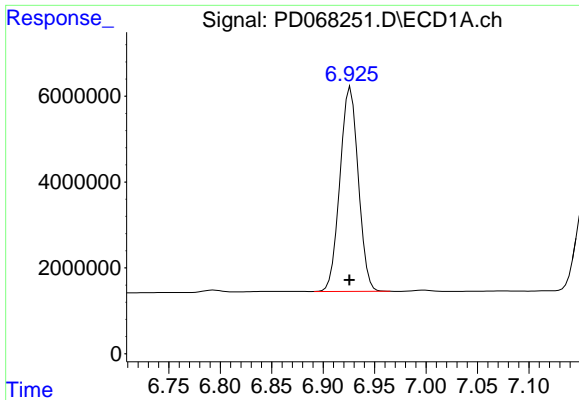
#19 Endosulfan Sulfate

R.T.: 6.663 min
 Delta R.T.: 0.001 min
 Response: 22807244
 Conc: 18.10 ng/ml



#19 Endosulfan Sulfate

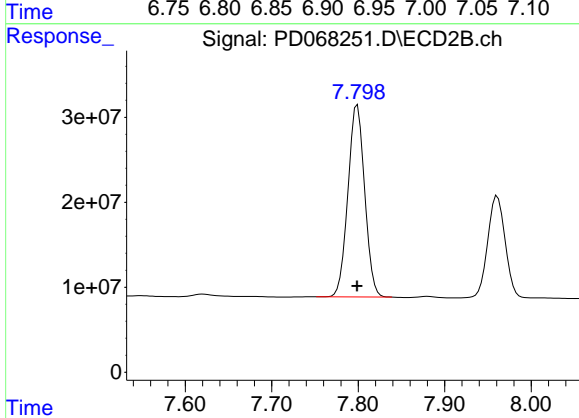
R.T.: 7.486 min
 Delta R.T.: 0.000 min
 Response: 146920395
 Conc: 18.88 ng/ml



#20 Methoxychlor

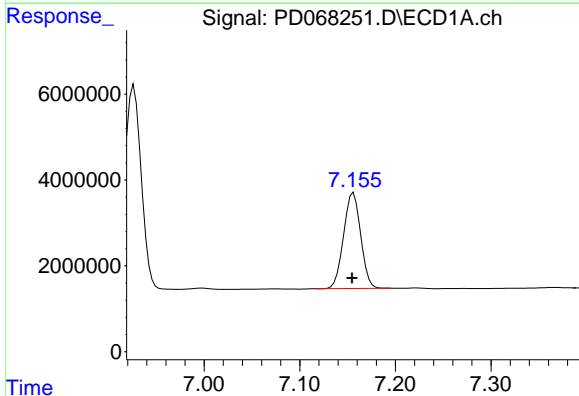
R.T.: 6.927 min
 Delta R.T.: 0.001 min
 Response: 59115929
 Conc: 91.10 ng/ml

Instrument :
 ECD_D
 ClientSampleId :
 RESCHK



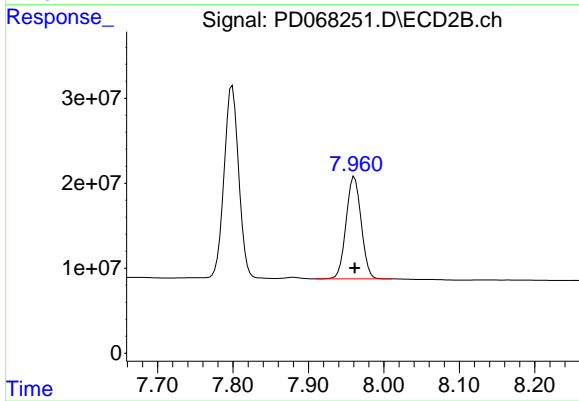
#20 Methoxychlor

R.T.: 7.799 min
 Delta R.T.: 0.000 min
 Response: 303297174
 Conc: 87.29 ng/ml



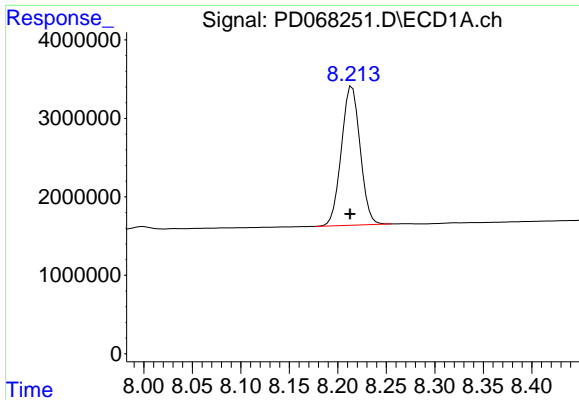
#21 Endrin ketone

R.T.: 7.156 min
 Delta R.T.: 0.001 min
 Response: 27804114
 Conc: 18.89 ng/ml



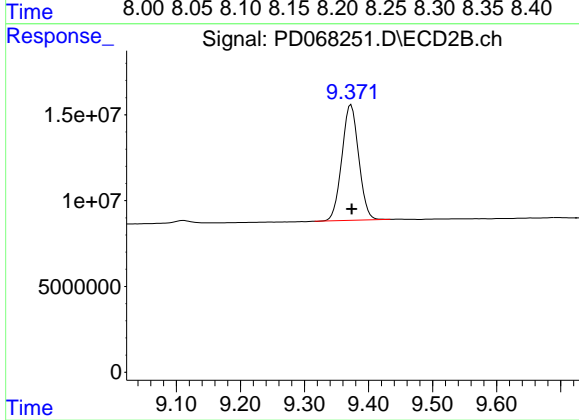
#21 Endrin ketone

R.T.: 7.961 min
 Delta R.T.: 0.000 min
 Response: 167365835
 Conc: 19.94 ng/ml



#28 Decachlorobiphenyl
R.T.: 8.215 min
Delta R.T.: 0.002 min
Response: 23784240
Conc: 20.44 ng/ml

Instrument :
ECD_D
ClientSampleId :
RESCHK



#28 Decachlorobiphenyl
R.T.: 9.373 min
Delta R.T.: 0.000 min
Response: 122994237
Conc: 20.75 ng/ml