

Data Path : Z:\pestpcbsrv\HPCHEM1\ECD_D\Data\PD030123\
 Data File : PD074072.D
 Signal(s) : Signal #1: ECD1A.ch Signal #2: ECD2B.ch
 Acq On : 28 Feb 2023 22:27
 Operator : AR\AJ
 Sample : PTOXICC100
 Misc :
 ALS Vial : 19 Sample Multiplier: 1

Instrument :
 ECD_D
 ClientSampleId :

Integration File signal 1: autoint1.e
 Integration File signal 2: autoint2.e
 Quant Time: Mar 01 02:02:11 2023
 Quant Method : Z:\pestpcbsrv\HPCHEM1\ECD_D\Method\DTX030123.M
 Quant Title : GC Extractables
 QLast Update : Wed Mar 01 01:56:20 2023
 Response via : Initial Calibration
 Integrator: ChemStation

Volume Inj. : 1 µl
 Signal #1 Phase : ZB-MR1 Signal #2 Phase: ZB-MR2
 Signal #1 Info : 30M x 0.32mm x 0. Signal #2 Info : 30M x 0.32mm x 0.25µm

Compound	RT#1	RT#2	Resp#1	Resp#2	ng/ml	ng/ml

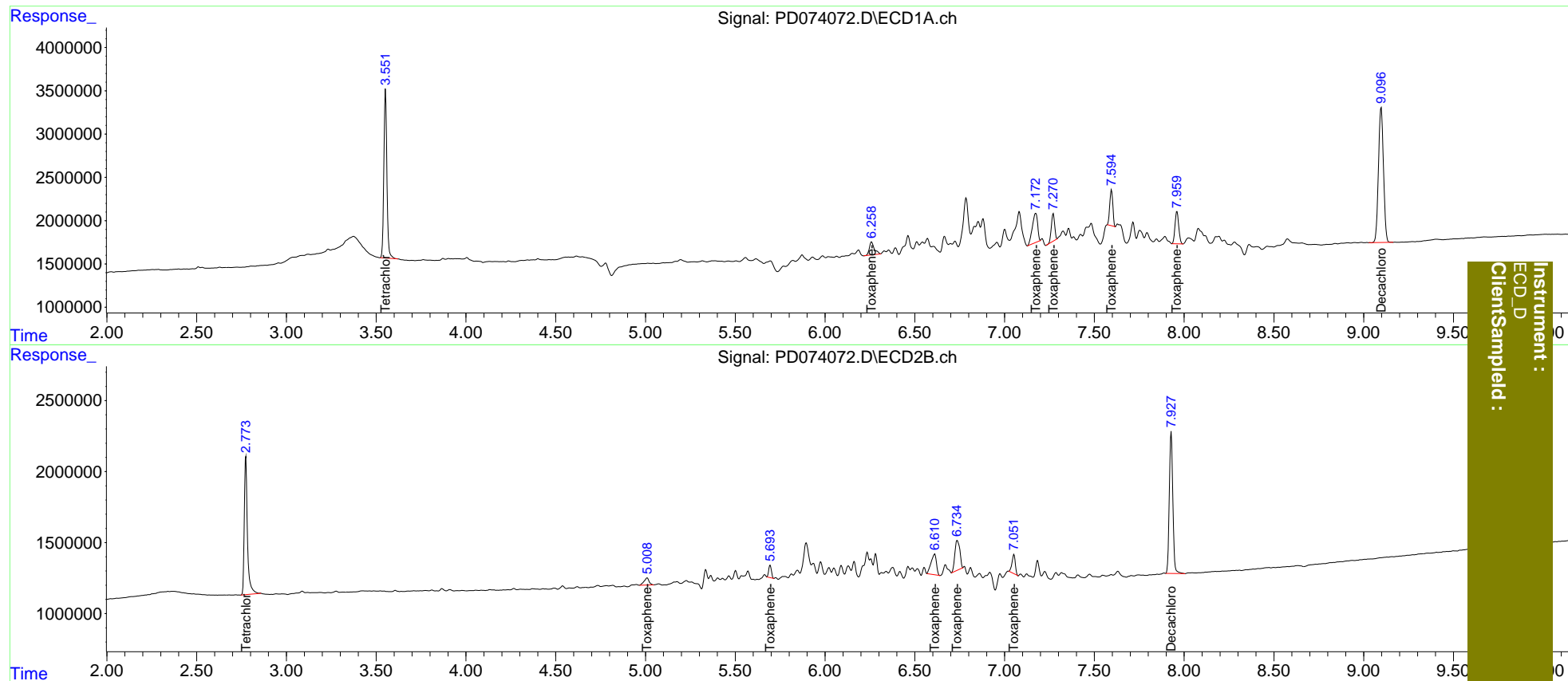
System Monitoring Compounds						
1) SA Tetrachlo...	3.552	2.774	22942342	11946035	10.105	10.314
7) SA Decachlor...	9.097	7.928	30284251	13691488	11.137	10.973
Target Compounds						
2) Toxaphene-1	6.259	5.010	2852089	981198	108.930	105.563
3) Toxaphene-2	7.173	5.694	6862993	925929	103.257	96.810
4) Toxaphene-3	7.271	6.611	3977159	2990230	104.936	93.220
5) Toxaphene-4	7.595	6.736	4925414	4001603	101.287	94.649
6) Toxaphene-5	7.960	7.052	5370895	1739592	104.091	92.389

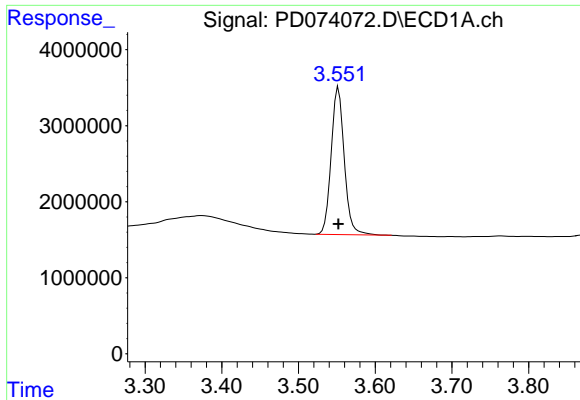
(f)=RT Delta > 1/2 Window (#)=Amounts differ by > 25% (m)=manual int.

Data Path : Z:\pestpcbsrv\HPCHEM1\ECD_D\Data\PD030123\
 Data File : PD074072.D
 Signal(s) : Signal #1: ECD1A.ch Signal #2: ECD2B.ch
 Acq On : 28 Feb 2023 22:27
 Operator : AR\AJ
 Sample : PTOXICC100
 Misc :
 ALS Vial : 19 Sample Multiplier: 1

Integration File signal 1: autoint1.e
 Integration File signal 2: autoint2.e
 Quant Time: Mar 01 02:02:11 2023
 Quant Method : Z:\pestpcbsrv\HPCHEM1\ECD_D\Method\DTX030123.M
 Quant Title : GC Extractables
 QLast Update : Wed Mar 01 01:56:20 2023
 Response via : Initial Calibration
 Integrator: ChemStation

Volume Inj. : 1 µl
 Signal #1 Phase : ZB-MR1 Signal #2 Phase: ZB-MR2
 Signal #1 Info : 30M x 0.32mm x 0. Signal #2 Info : 30M x 0.32mm x0.25µm

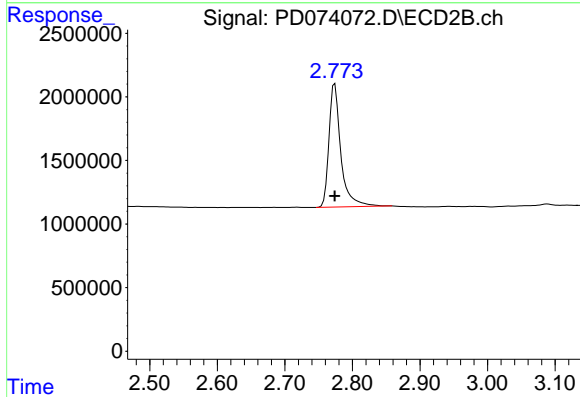




#1 Tetrachloro-m-xylene

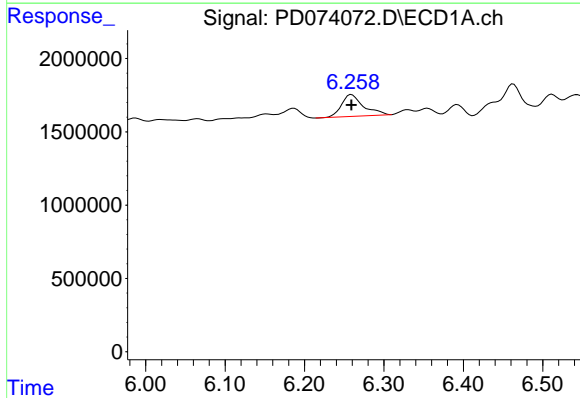
R.T.: 3.552 min
 Delta R.T.: 0.000 min
 Response: 22942342
 Conc: 10.10 ng/ml

Instrument :
 ECD_D
 ClientSampleId :



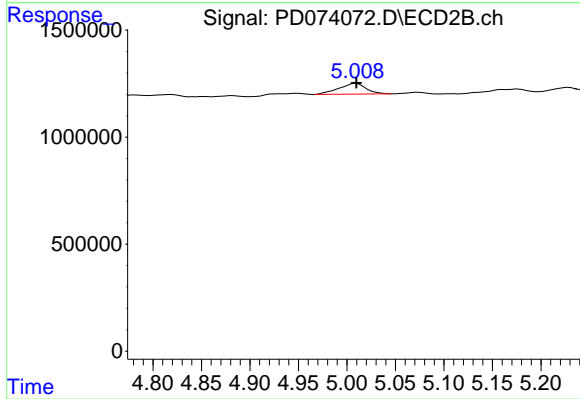
#1 Tetrachloro-m-xylene

R.T.: 2.774 min
 Delta R.T.: 0.000 min
 Response: 11946035
 Conc: 10.31 ng/ml



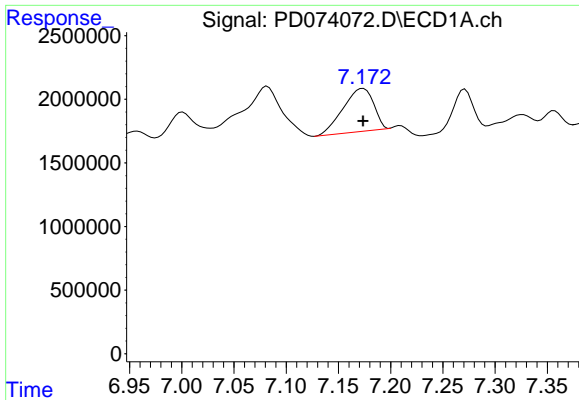
#2 Toxaphene-1

R.T.: 6.259 min
 Delta R.T.: 0.000 min
 Response: 2852089
 Conc: 108.93 ng/ml



#2 Toxaphene-1

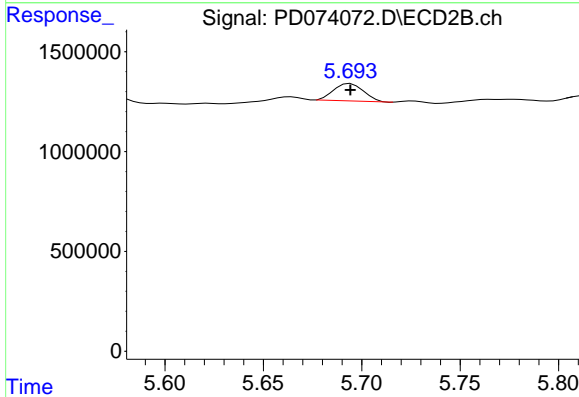
R.T.: 5.010 min
 Delta R.T.: 0.000 min
 Response: 981198
 Conc: 105.56 ng/ml



#3 Toxaphene-2

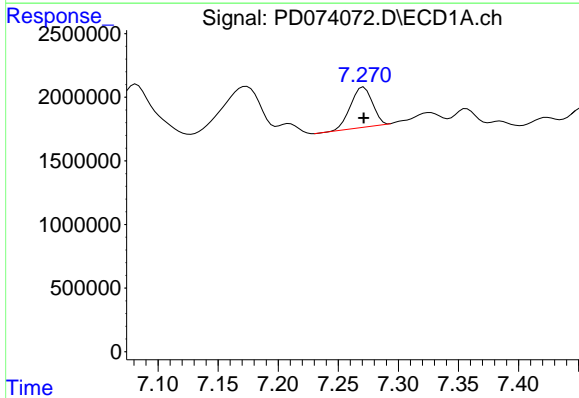
R.T.: 7.173 min
 Delta R.T.: 0.000 min
 Response: 6862993
 Conc: 103.26 ng/ml

Instrument :
 ECD_D
 ClientSampleId :



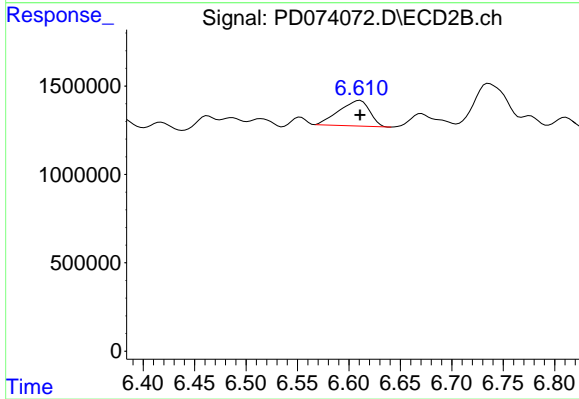
#3 Toxaphene-2

R.T.: 5.694 min
 Delta R.T.: 0.000 min
 Response: 925929
 Conc: 96.81 ng/ml



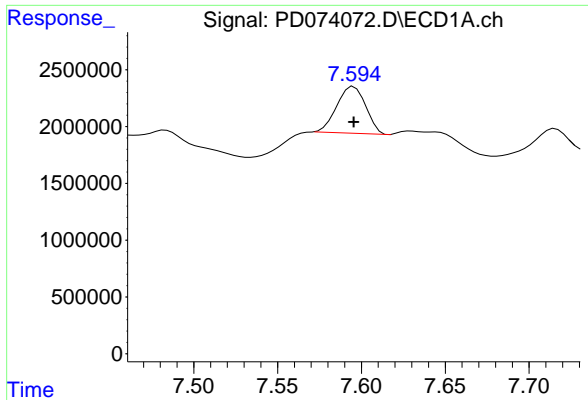
#4 Toxaphene-3

R.T.: 7.271 min
 Delta R.T.: 0.000 min
 Response: 3977159
 Conc: 104.94 ng/ml



#4 Toxaphene-3

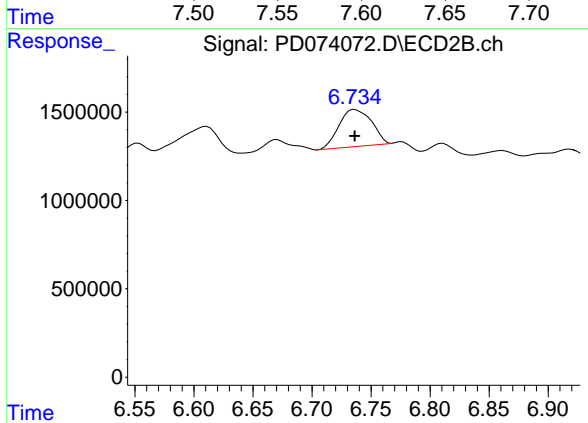
R.T.: 6.611 min
 Delta R.T.: 0.000 min
 Response: 2990230
 Conc: 93.22 ng/ml



#5 Toxaphene-4

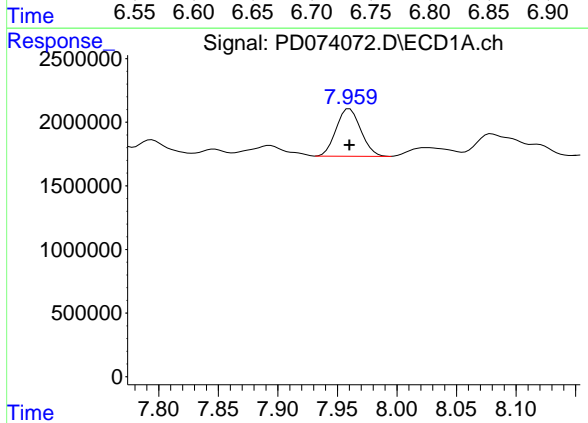
R.T.: 7.595 min
 Delta R.T.: 0.000 min
 Response: 4925414
 Conc: 101.29 ng/ml

Instrument :
 ECD_D
 ClientSampleId :



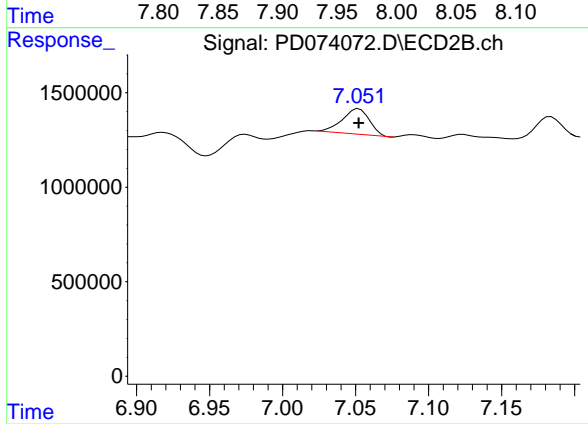
#5 Toxaphene-4

R.T.: 6.736 min
 Delta R.T.: 0.000 min
 Response: 4001603
 Conc: 94.65 ng/ml



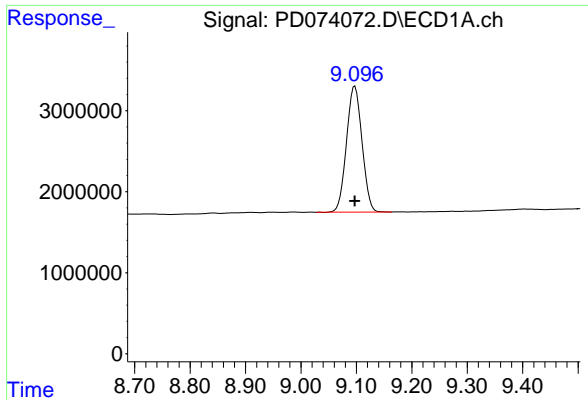
#6 Toxaphene-5

R.T.: 7.960 min
 Delta R.T.: 0.000 min
 Response: 5370895
 Conc: 104.09 ng/ml



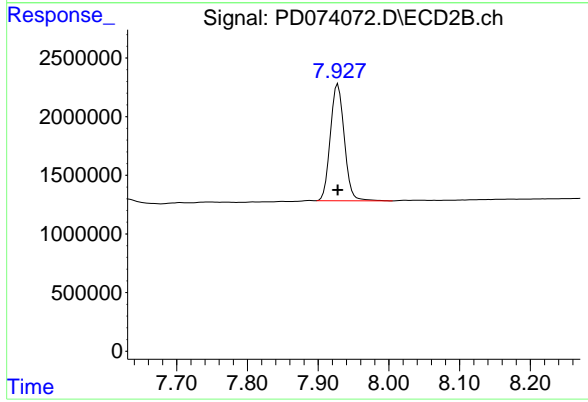
#6 Toxaphene-5

R.T.: 7.052 min
 Delta R.T.: 0.000 min
 Response: 1739592
 Conc: 92.39 ng/ml



#7 Decachlorobiphenyl
R.T.: 9.097 min
Delta R.T.: 0.000 min
Response: 30284251
Conc: 11.14 ng/ml

Instrument :
ECD_D
ClientSampleId :



#7 Decachlorobiphenyl
R.T.: 7.928 min
Delta R.T.: 0.000 min
Response: 13691488
Conc: 10.97 ng/ml