

Data Path : Z:\pestpcbsrv\HPCHEM1\ECD_D\Data\PD030124\
 Data File : PD081886.D
 Signal(s) : Signal #1: ECD1A.ch Signal #2: ECD2B.ch
 Acq On : 01 Mar 2024 19:07
 Operator : AR\AJ
 Sample : P1603-22
 Misc :
 ALS Vial : 40 Sample Multiplier: 1

Instrument :
 ECD_D
 ClientSampleId :
 BGSY3

Integration File signal 1: autoint1.e
 Integration File signal 2: autoint2.e
 Quant Time: Mar 01 19:50:37 2024
 Quant Method : Z:\pestpcbsrv\HPCHEM1\ECD_D\Method\PD021224CLP.M
 Quant Title : GC Extractables
 QLast Update : Mon Feb 12 17:06:05 2024
 Response via : Initial Calibration
 Integrator: ChemStation

Volume Inj. : 1 µl
 Signal #1 Phase : ZB-MR2 Signal #2 Phase: ZB-MR2
 Signal #1 Info : 30M x 0.32mm x0.5 Signal #2 Info : 30M x 0.32mm x 0.25µm

Compound	RT#1	RT#2	Resp#1	Resp#2	ng/ml	ng/ml

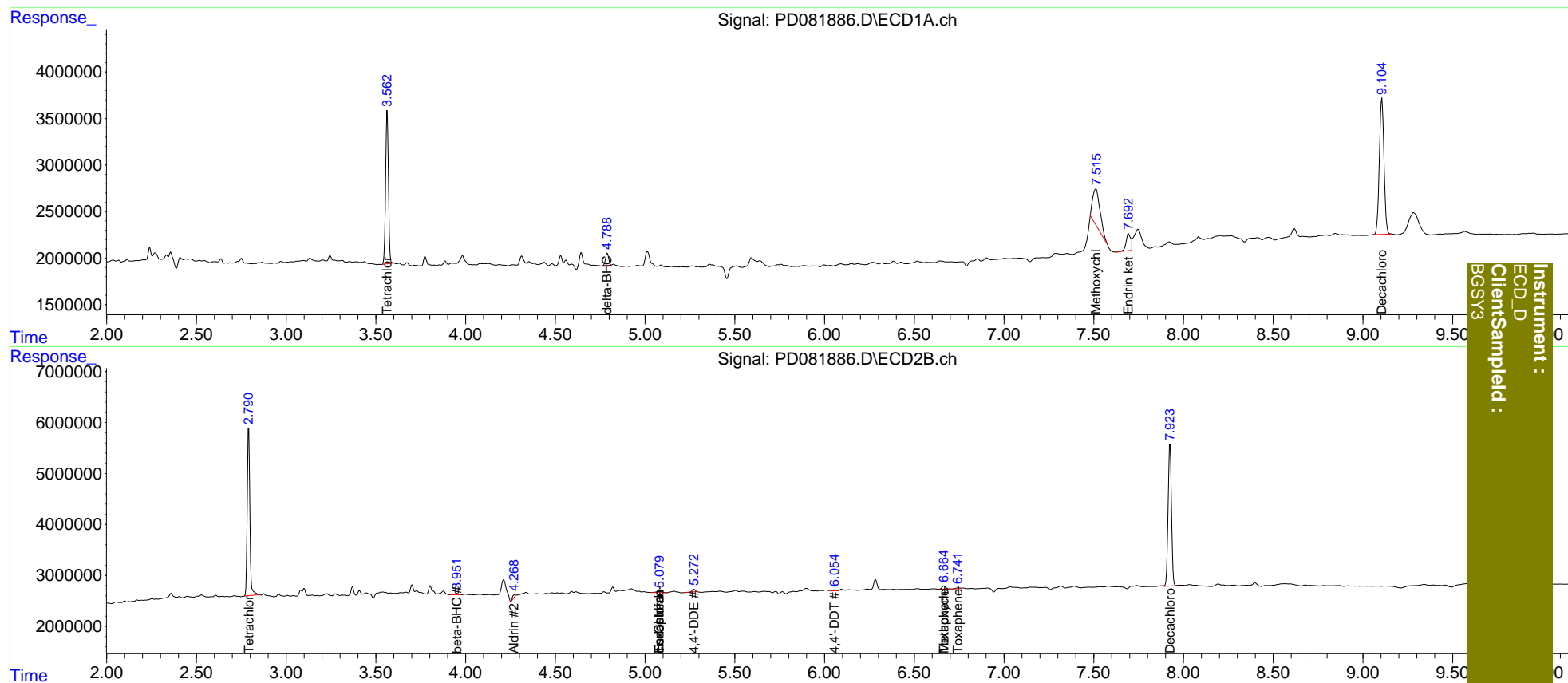
System Monitoring Compounds						
1) SA Tetrachlo...	3.563	2.791	17876658	33410967	13.076	13.628
2) SA Decachlor...	9.106	7.925	26546849	36625962	13.759	14.764
Target Compounds						
3) MA gamma-BHC...	0.000	3.638	0	137999	N.D.	<MDL
4) MA Heptachlor	0.000	3.952	0	345229	N.D.	<MDL
5) MB Aldrin	0.000	4.271	0	466953	N.D.	0.138
6) B beta-BHC	0.000	3.952f	0	345229	N.D.	0.204
7) B delta-BHC	4.790	0.000	1648136	0	0.696	N.D. #
8) B Heptachlo...	0.000	4.771	0	311098	N.D.	<MDL
9) A Endosulfan I	0.000	5.081f	0	518406	N.D.	0.173
11) B cis-Chlor...	0.000	5.081	0	518406	N.D.	0.162
12) B 4,4'-DDE	0.000	5.273	0	617933	N.D.	0.209
14) MA Endrin	0.000	5.669	0	123386	N.D.	<MDL
15) B Endosulfa...	0.000	5.974	0	168074	N.D.	<MDL
17) MA 4,4'-DDT	0.000	6.056	0	260723	N.D.	0.101
20) A Methoxychlor	7.512	6.665	10716610	965412	11.683	0.723 #
21) B Endrin ke...	7.693	0.000	3190707	0	1.650	N.D. #
22) Toxaphene-1	0.000	5.081f	0	518406	N.D.	31.664
24) Toxaphene-3	0.000	6.665f	0	965412	N.D.	16.494
25) Toxaphene-4	0.000	6.743	0	318489	N.D.	4.002

(f)=RT Delta > 1/2 Window (#)=Amounts differ by > 25% (m)=manual int.

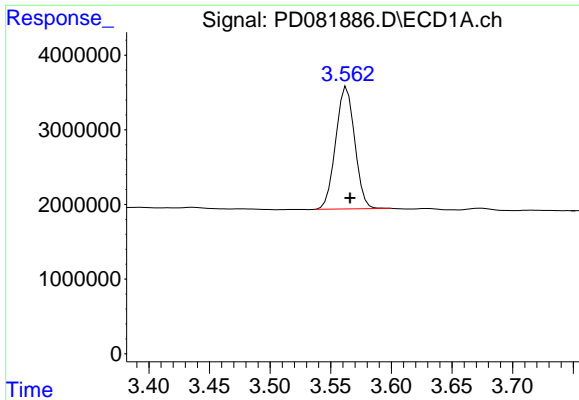
Data Path : Z:\pestpcbsrv\HPCHEM1\ECD_D\Data\PD030124\
 Data File : PD081886.D
 Signal(s) : Signal #1: ECD1A.ch Signal #2: ECD2B.ch
 Acq On : 01 Mar 2024 19:07
 Operator : AR\AJ
 Sample : P1603-22
 Misc :
 ALS Vial : 40 Sample Multiplier: 1

Integration File signal 1: autoint1.e
 Integration File signal 2: autoint2.e
 Quant Time: Mar 01 19:50:37 2024
 Quant Method : Z:\pestpcbsrv\HPCHEM1\ECD_D\Method\PD021224CLP.M
 Quant Title : GC Extractables
 QLast Update : Mon Feb 12 17:06:05 2024
 Response via : Initial Calibration
 Integrator: ChemStation

Volume Inj. : 1 µl
 Signal #1 Phase : ZB-MR1 Signal #2 Phase: ZB-MR2
 Signal #1 Info : 30M x 0.32mm x0.5 Signal #2 Info : 30M x 0.32mm x 0.25µm

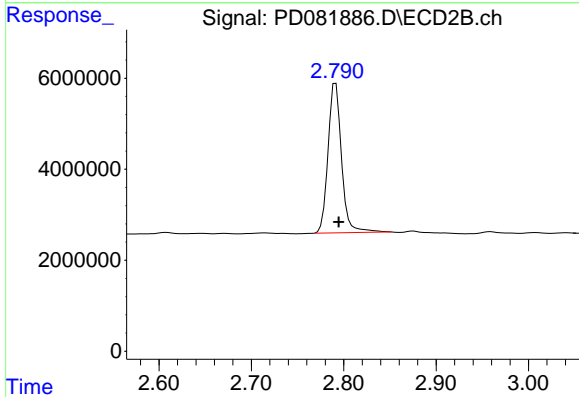


Instrument :
 ECD_D
 ClientSampled :
 BGSYS3

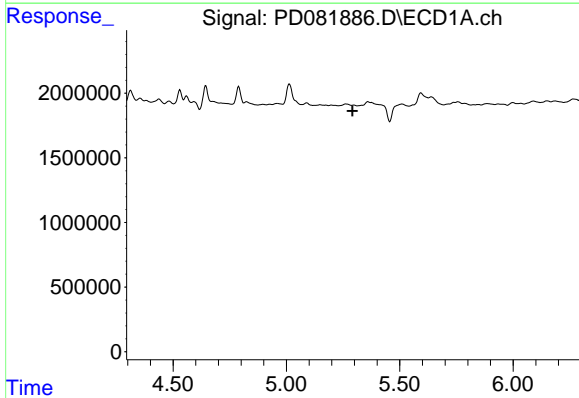


#1 Tetrachloro-m-xylene
 R.T.: 3.563 min
 Delta R.T.: -0.003 min
 Response: 17876658
 Conc: 13.08 ng/ml

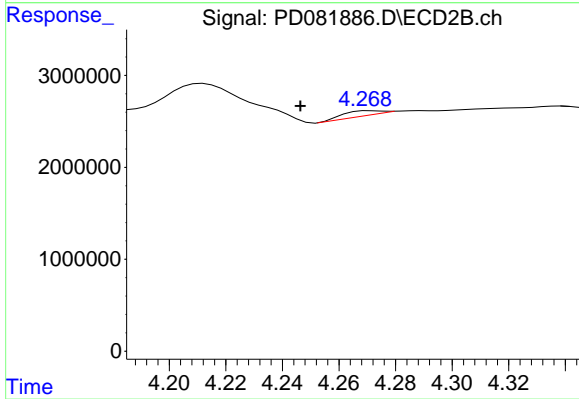
Instrument :
 ECD_D
 ClientSampleId :
 BGSY3



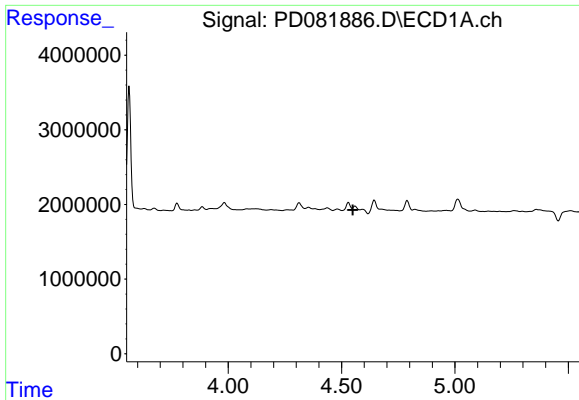
#1 Tetrachloro-m-xylene
 R.T.: 2.791 min
 Delta R.T.: -0.003 min
 Response: 33410967
 Conc: 13.63 ng/ml



#5 Aldrin
 R.T.: 0.000 min
 Exp R.T. : 5.292 min
 Response: 0
 Conc: N.D.



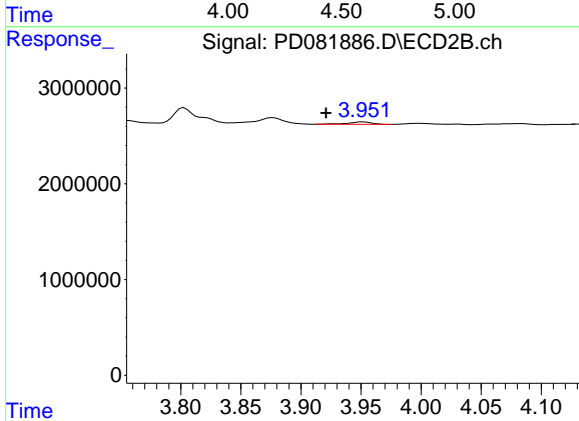
#5 Aldrin
 R.T.: 4.271 min
 Delta R.T.: 0.025 min
 Response: 466953
 Conc: 0.14 ng/ml



#6 beta-BHC

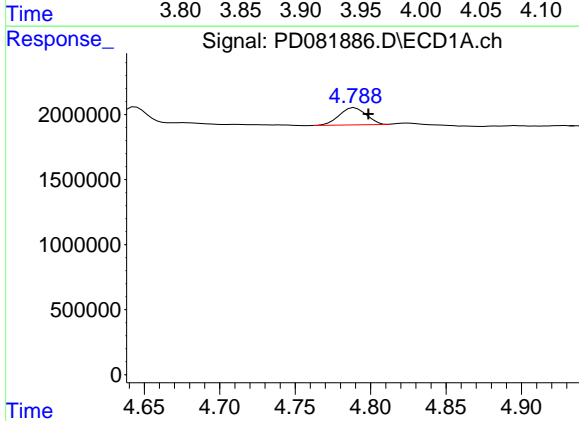
R.T.: 0.000 min
 Exp R.T.: 4.550 min
 Response: 0
 Conc: N.D.

Instrument :
 ECD_D
 ClientSampleId :
 BGSY3



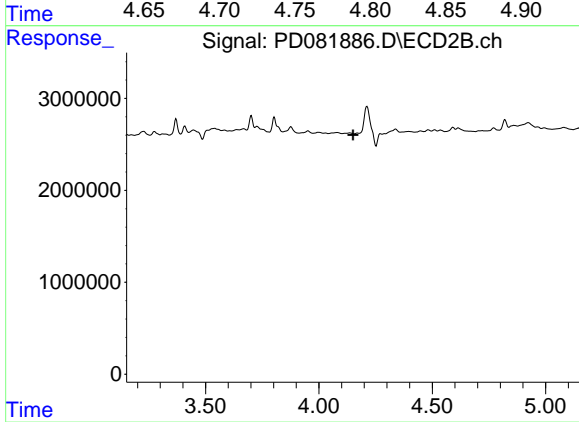
#6 beta-BHC

R.T.: 3.952 min
 Delta R.T.: 0.031 min
 Response: 345229
 Conc: 0.20 ng/ml



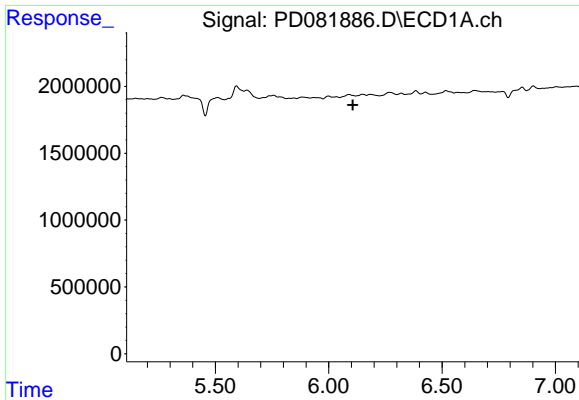
#7 delta-BHC

R.T.: 4.790 min
 Delta R.T.: -0.009 min
 Response: 1648136
 Conc: 0.70 ng/ml



#7 delta-BHC

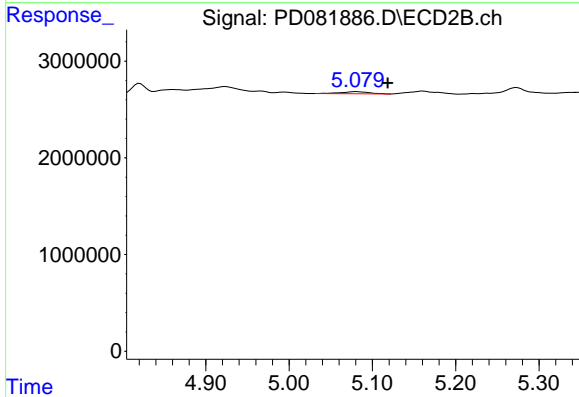
R.T.: 0.000 min
 Exp R.T.: 4.151 min
 Response: 0
 Conc: N.D.



#9 Endosulfan I

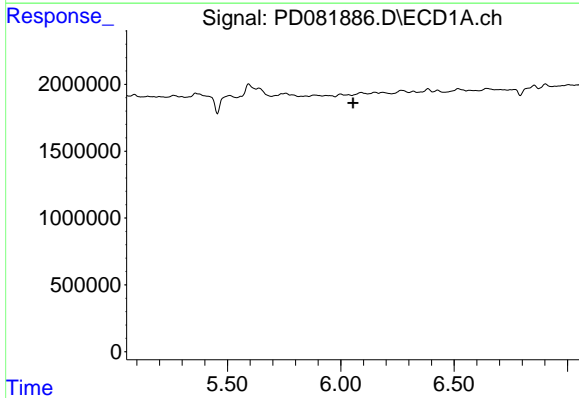
R.T.: 0.000 min
 Exp R.T. : 6.106 min
 Response: 0
 Conc: N.D.

Instrument :
 ECD_D
 ClientSampleId :
 BGSY3



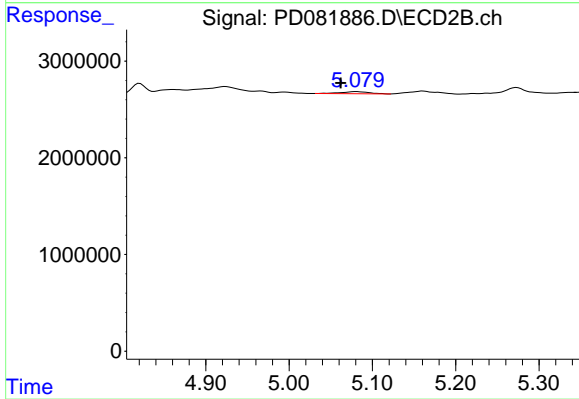
#9 Endosulfan I

R.T.: 5.081 min
 Delta R.T.: -0.038 min
 Response: 518406
 Conc: 0.17 ng/ml



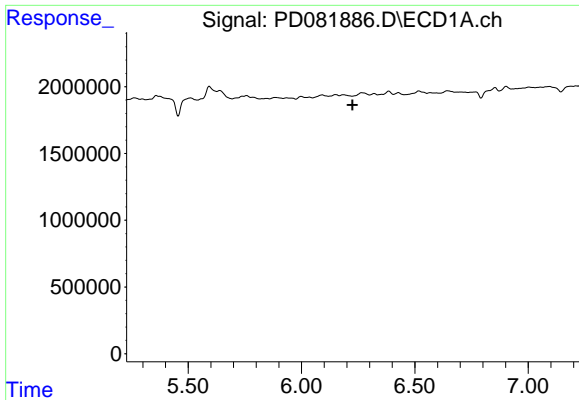
#11 cis-Chlordane

R.T.: 0.000 min
 Exp R.T. : 6.054 min
 Response: 0
 Conc: N.D.



#11 cis-Chlordane

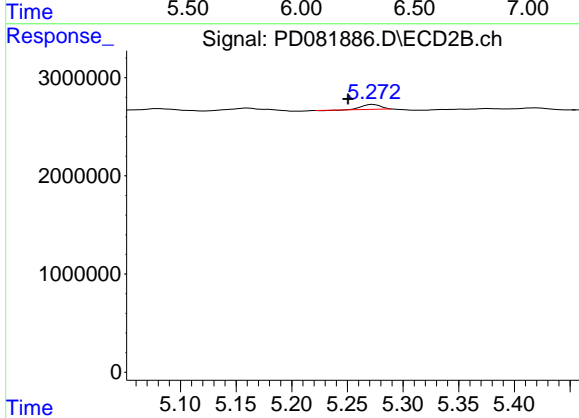
R.T.: 5.081 min
 Delta R.T.: 0.018 min
 Response: 518406
 Conc: 0.16 ng/ml



#12 4,4'-DDE

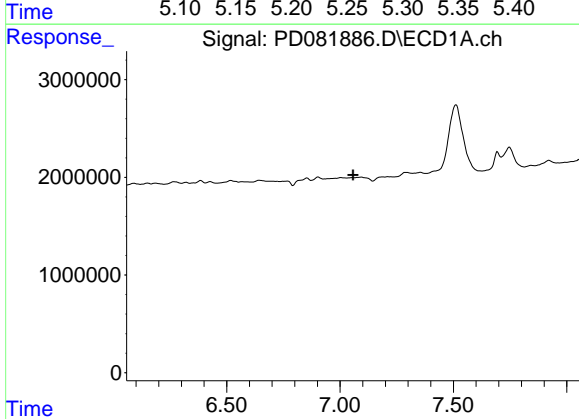
R.T.: 0.000 min
 Exp R.T.: 6.225 min
 Response: 0
 Conc: N.D.

Instrument :
 ECD_D
 ClientSampleId :
 BGSY3



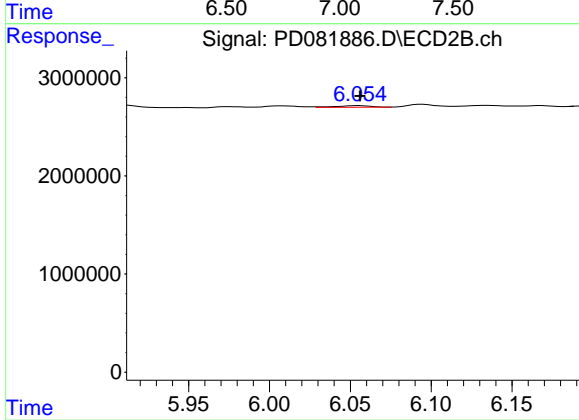
#12 4,4'-DDE

R.T.: 5.273 min
 Delta R.T.: 0.023 min
 Response: 617933
 Conc: 0.21 ng/ml



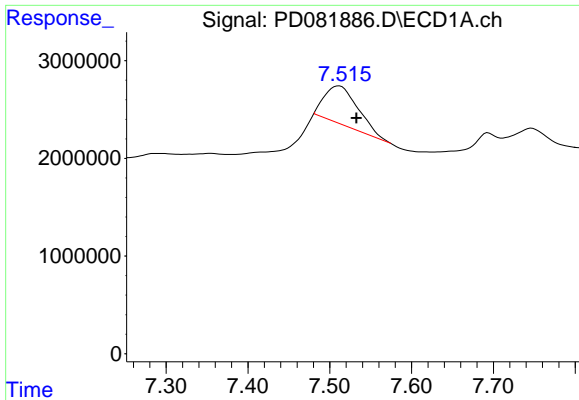
#17 4,4'-DDT

R.T.: 0.000 min
 Exp R.T.: 7.058 min
 Response: 0
 Conc: N.D.



#17 4,4'-DDT

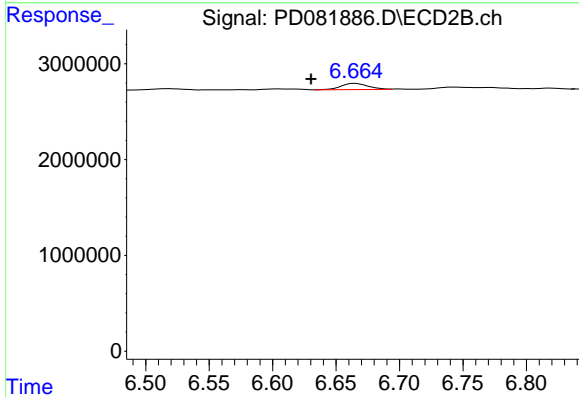
R.T.: 6.056 min
 Delta R.T.: 0.000 min
 Response: 260723
 Conc: 0.10 ng/ml



#20 Methoxychlor

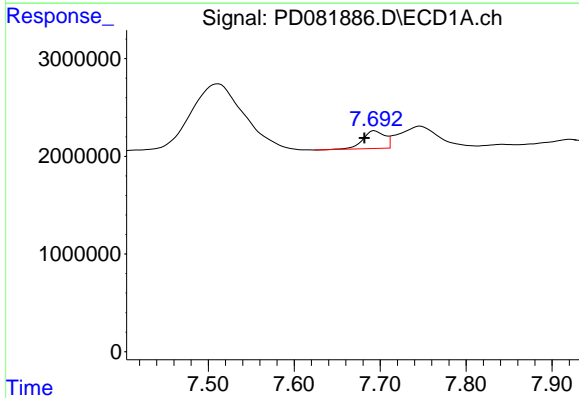
R.T.: 7.512 min
 Delta R.T.: -0.021 min
 Response: 10716610
 Conc: 11.68 ng/ml

Instrument :
 ECD_D
 ClientSampleId :
 BGSY3



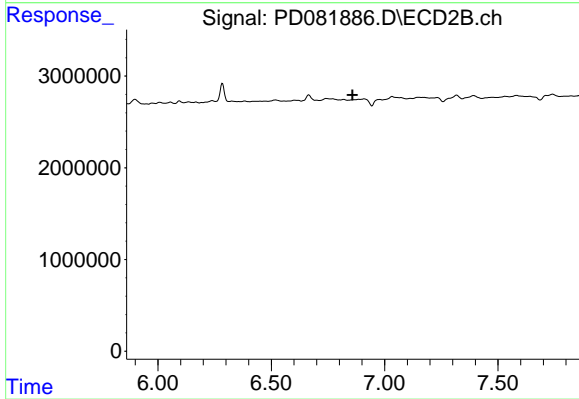
#20 Methoxychlor

R.T.: 6.665 min
 Delta R.T.: 0.035 min
 Response: 965412
 Conc: 0.72 ng/ml



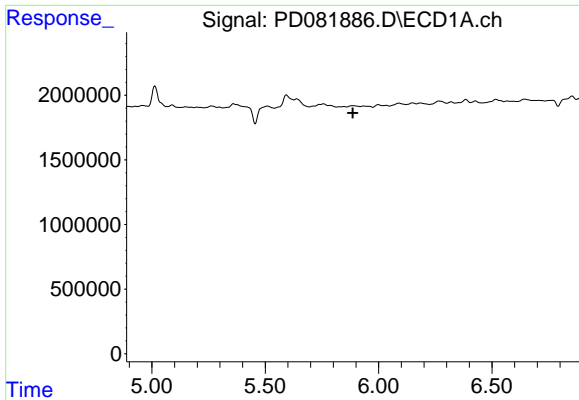
#21 Endrin ketone

R.T.: 7.693 min
 Delta R.T.: 0.012 min
 Response: 3190707
 Conc: 1.65 ng/ml



#21 Endrin ketone

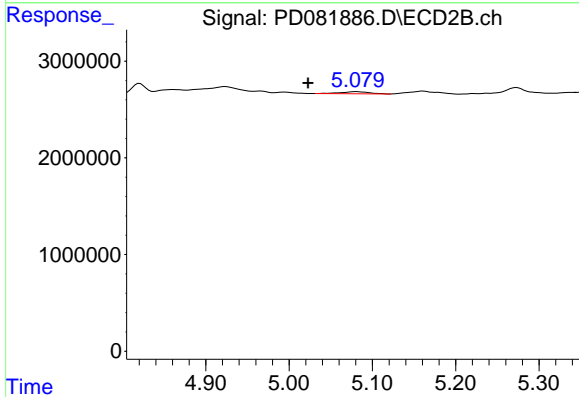
R.T.: 0.000 min
 Exp R.T. : 6.859 min
 Response: 0
 Conc: N.D.



#22 Toxaphene-1

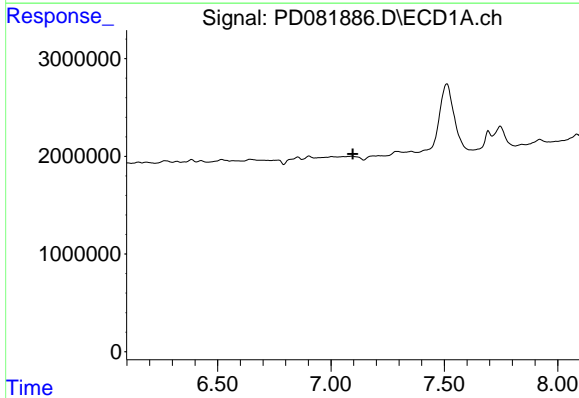
R.T.: 0.000 min
 Exp R.T.: 5.886 min
 Response: 0
 Conc: N.D.

Instrument :
 ECD_D
 ClientSampleId :
 BGSY3



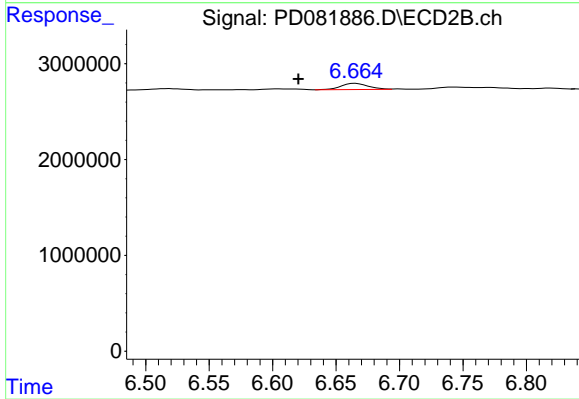
#22 Toxaphene-1

R.T.: 5.081 min
 Delta R.T.: 0.058 min
 Response: 518406
 Conc: 31.66 ng/ml



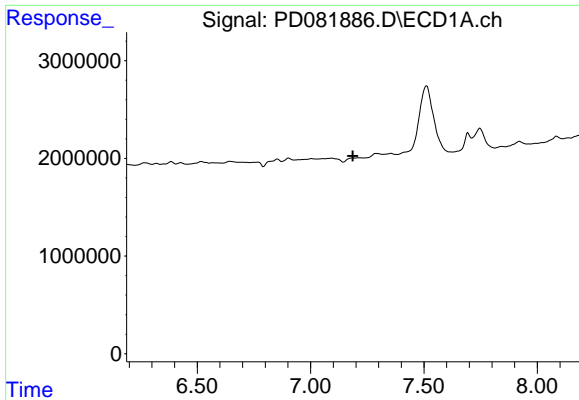
#24 Toxaphene-3

R.T.: 0.000 min
 Exp R.T.: 7.096 min
 Response: 0
 Conc: N.D.



#24 Toxaphene-3

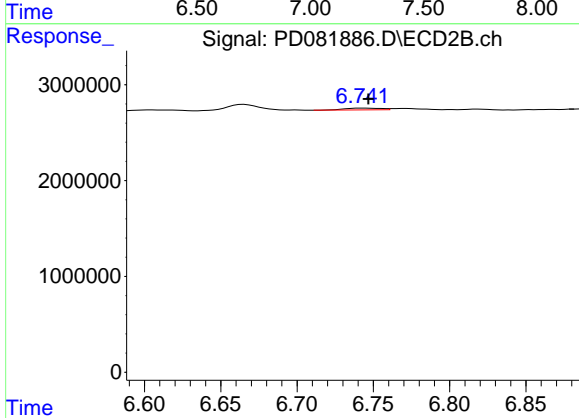
R.T.: 6.665 min
 Delta R.T.: 0.045 min
 Response: 965412
 Conc: 16.49 ng/ml



#25 Toxaphene-4

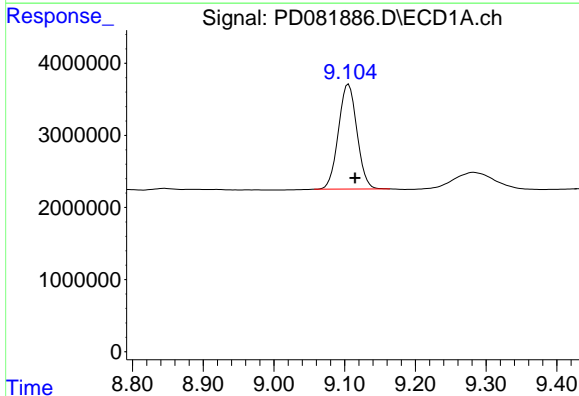
R.T.: 0.000 min
 Exp R.T.: 7.187 min
 Response: 0
 Conc: N.D.

Instrument :
 ECD_D
 ClientSampleId :
 BGSY3



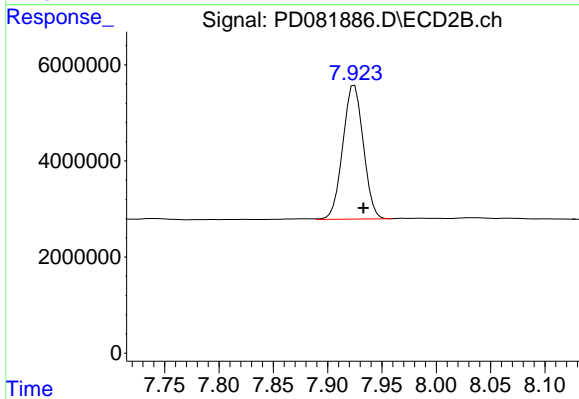
#25 Toxaphene-4

R.T.: 6.743 min
 Delta R.T.: -0.004 min
 Response: 318489
 Conc: 4.00 ng/ml



#27 Decachlorobiphenyl

R.T.: 9.106 min
 Delta R.T.: -0.009 min
 Response: 26546849
 Conc: 13.76 ng/ml



#27 Decachlorobiphenyl

R.T.: 7.925 min
 Delta R.T.: -0.008 min
 Response: 36625962
 Conc: 14.76 ng/ml